

2009

Master of Health Science 2009

Nova Southeastern University

Follow this and additional works at: https://nsuworks.nova.edu/hpd_coursecatalogs

 Part of the [Other Medicine and Health Sciences Commons](#)

NSUWorks Citation

Nova Southeastern University, "Master of Health Science 2009" (2009). *Health Professions Divisions Course Catalogs*. 271.
https://nsuworks.nova.edu/hpd_coursecatalogs/271

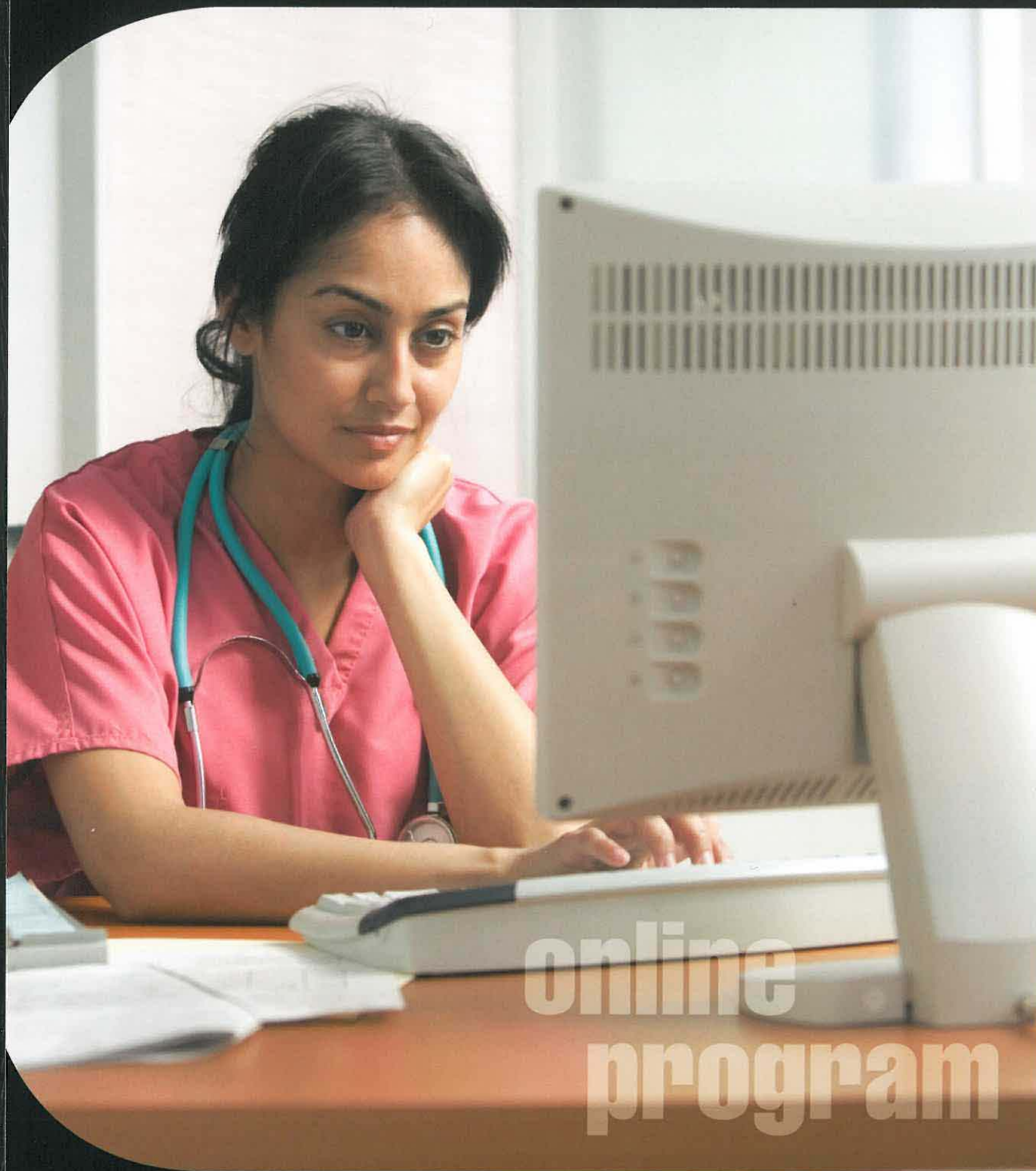
This Program Overview is brought to you for free and open access by the NSU Course Catalogs and Course Descriptions at NSUWorks. It has been accepted for inclusion in Health Professions Divisions Course Catalogs by an authorized administrator of NSUWorks. For more information, please contact nsuworks@nova.edu.

master of health science

COLLEGE OF ALLIED HEALTH AND NURSING

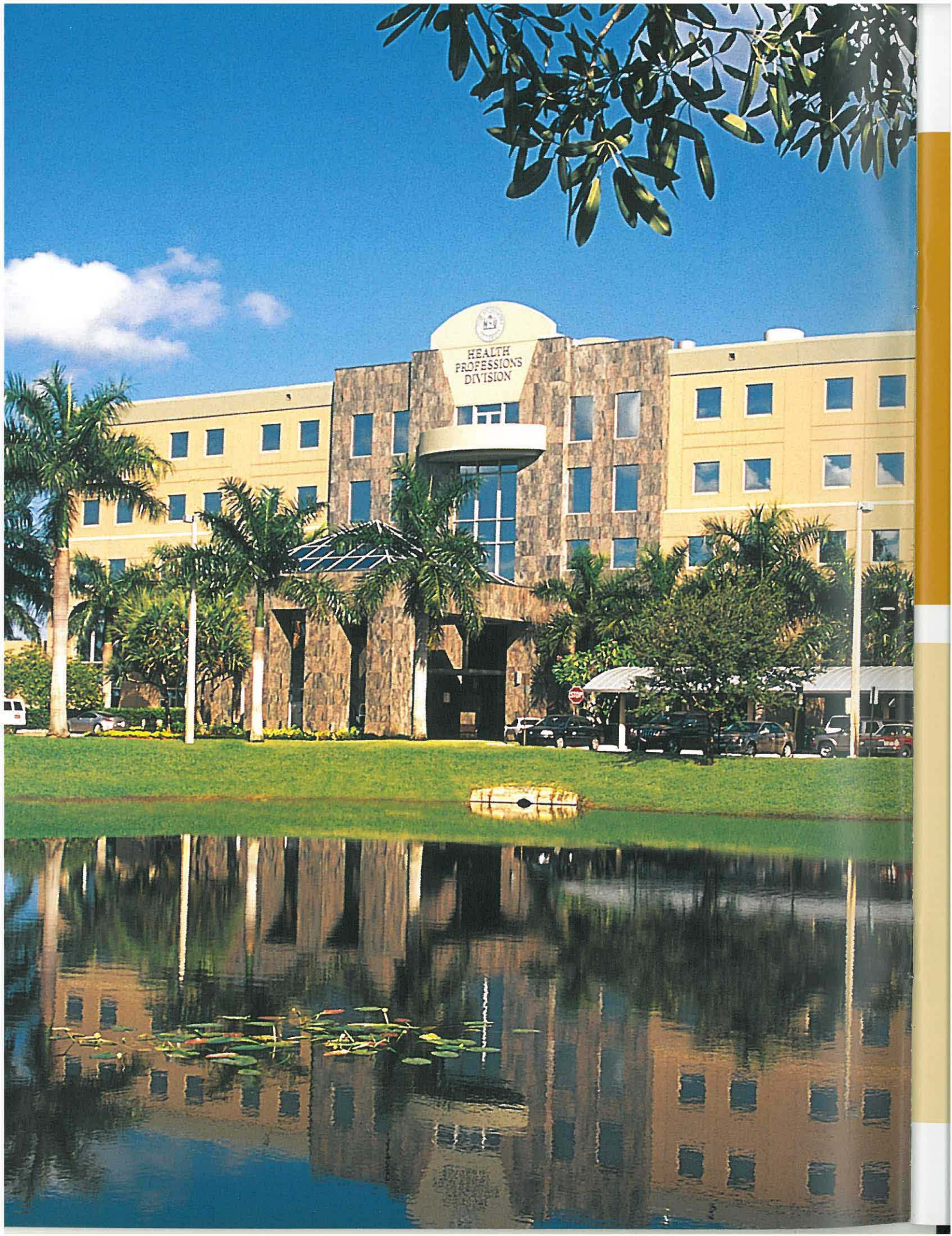
HEALTH PROFESSIONS DIVISION

2009



online
program





nova southeastern university

TABLE OF CONTENTS

Health Professions Division	2
Letter from the Chancellor	3
Master of Health Science (M.H.Sc.)	4
Letter from the Dean	5
The Role of the Master of Health Science Program	6
Program Features	7
Curriculum Overview	8
Curriculum Outline	9
Graduate Distance Education	12
Distance Education Support	13
Application Procedures	14
Admission Requirements	17
Computer Requirements	18
Online Medical Databases	19
Tuition and Fees	20
Financial Aid	20

NSU MISSION STATEMENT

Nova Southeastern University is a dynamic, not-for-profit independent institution dedicated to providing high-quality educational programs of distinction from preschool through the professional and doctoral levels, as well as service to the community. Nova Southeastern University prepares students for lifelong learning and leadership roles in business and the professions. It offers academic programs at times convenient to students, employing innovative delivery systems and rich learning resources on campus and at distant sites. The university fosters inquiry, research, and creative professional activity by uniting faculty and students in acquiring and applying knowledge in clinical, community, and professional settings.

Nova Southeastern University, synonymous with dynamic innovation and intellectual challenge, is the largest independent not-for-profit university in the Southeast, and with an enrollment of more than 27,000 students, is the **sixth largest** in the United States. Situated on a beautiful, 300-acre campus in Fort Lauderdale, Florida, the university is experiencing a sustained period of academic growth, fiscal strength, and commitment to the challenges of the 21st century.

In this environment of expansion and stability, the university is capitalizing on its strengths in such areas as academic innovation, comprehensive clinical training, and flexible educational delivery systems.

Founded in 1964 as Nova University, the institution merged with Southeastern University of the Health Sciences in 1994, creating Nova Southeastern University. To date, the institution has approximately **98,000 alumni**. Fully accredited by the Commission on Colleges of the Southern Association of Colleges and Schools, the university awards associate's, bachelor's, master's, educational specialist, and doctoral degrees in a wide range of fields including the health professions, law, business, marine sciences, psychology, social sciences, computer and information sciences, and education.

The university's programs are administered through **15 academic centers** that offer courses at the main campus and at field-based locations throughout Florida; across the nation; and at selected international sites in Europe, Mexico, the Pacific Rim, Central and South America, and the Caribbean.

With a budget of more than \$220 million per year and an upward trend in enrollment, the university will continue to maintain a solid record of academic and fiscal strength and excellence in teaching and community service, while expanding its mission in research and scholarship.

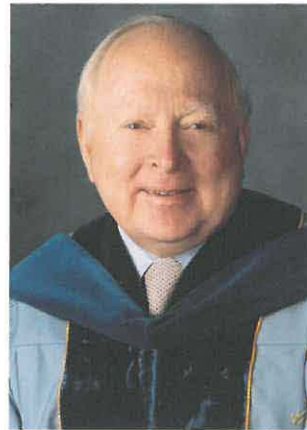
health professions division

As a student in the Health Professions Division of Nova Southeastern University, you can anticipate a remarkable experience. You will train, study, interact, and share faculty and resources (either campus-based or online) with students from various backgrounds and disciplines. This interdisciplinary approach distinguishes the Health Professions Division as unique and will better prepare you to master your discipline with a sensitivity and understanding of the entire health care system.

The Health Professions Division, with a student body of more than 2,500, is home to six colleges. The College of Osteopathic Medicine, the first one in the southeastern United States, grants the doctor of osteopathic medicine (D.O.) degree. The College of Osteopathic Medicine also awards the master of public health (M.P.H.) and the master of science in biomedical informatics (M.S.BI) degrees. The College of Pharmacy offers the doctor of pharmacy (Pharm.D.) degree to entry-level, international, and postbaccalaureate students. The College of Optometry is the only institution in the state of Florida that awards the doctor of optometry (O.D.) degree as well as the master in clinical vision research (M.S.). The College of Allied Health and Nursing offers an entry-level bachelor of science degree in nursing (B.S.N.), as well as an R.N. to B.S.N. program, a master of science in nursing (M.S.N.) degree, a post-M.S.N. certificate, and a Ph.D. in nursing education. The college offers a physician assistant program that awards the master of medical science (M.M.S.) degree in physician assistant, as well as a master of occupational therapy (M.O.T.) degree and the entry-level doctor of physical therapy (D.P.T.) degree. Doctoral programs are offered in occupational therapy (Ph.D./O.T., Dr.OT), physical therapy (Ph.D./P.T., D.P.T.), and audiology (Au.D.). In addition to these programs, the College of Allied Health and Nursing offers the bachelor of health science (B.H.Sc.), master of health science (M.H.Sc.), and doctor of health science (D.H.Sc.) degrees—open to midlevel clinicians and allied health professionals. There are also courses of study in bachelor of health science—vascular sonography and master of health science—anesthesiologist assistant. The College of Medical Sciences grants the master of biomedical sciences (M.B.S.) degree. In the fall of 1997, the College of Dental Medicine admitted its charter class into the doctor of dental medicine (D.M.D.) program. Now, the college also offers a master of science in dentistry (M.Sc.D.) degree, as well as postgraduate programs in endodontics, oral surgery, orthodontics, pediatric dentistry, periodontics, and prosthodontics.

The Health Professions Division occupies a \$70 million complex, covering 21 acres of the university campus. The division includes eight buildings totaling more than 900,000 square feet of space for classrooms, laboratories, offices, the Health Professions Division Library, an outpatient health center, and a pharmaceutical care center. The adjacent 1,500-vehicle parking garage overlooks the Miami Dolphins Training Camp.

letter from the chancellor



If you wish to be a leader in the health professions, Nova Southeastern University can help you reach your potential.

In less than two decades, NSU's Health Professions Division has developed into a multidisciplinary academic health center of international stature. Composed of the Colleges of Osteopathic Medicine, Pharmacy, Dental Medicine, Optometry, Allied Health and Nursing, and Medical Sciences, the Health Professions Division has redoubled its commitment to academic excellence, innovation, and community service, while expanding its mission in research and scholarship. Working together, our distinguished faculty members prepare students for an exciting career on tomorrow's dynamic health care team.

A handwritten signature in black ink, reading "Fred Lippman". The signature is written in a cursive, flowing style.

Fred Lippman, R.Ph., Ed.D.
Chancellor

master of health science (m.h.sc.)

ONLINE DEGREE PROGRAM The M.H.Sc. program admits health professionals with diverse education, work backgrounds, interests, and life experiences who have demonstrated the capacity to pursue a course of study leading to a master's degree and who want increasingly more responsible positions in the health care field. (Applicants must hold a bachelor's degree from an accredited college or university.) It is designed to be completed in a distance-learning format. The online Master of Health Science program is offered via the Nova Southeastern University College of Allied Health and Nursing's state-of-the-art, Web-based distance-learning technology. In this program, students can do their coursework online, while maintaining career, family, and community obligations. There are no on-campus requirements to complete the degree for most students. Students enrolled in the health law track, however, will attend an on-campus seminar for one or two days.

NSU COLLEGE OF ALLIED HEALTH AND NURSING MISSION STATEMENT

In the spirit of improving and maintaining optimum health conditions in the community, the College of Allied Health and Nursing prepares professionals with the skills necessary for the diagnosis, treatment, and prevention of diseases; for the support of the populace in maintaining proper health and safety; for the management of rehabilitative processes; and for the education of the community in understanding the interdependency of health, environment, social and political factors. The College of Allied Health and Nursing endeavors to train both graduate and undergraduate professionals in the arts of improving the quality of life in the community.

letter from the dean



The health care marketplace is undergoing rapid change. The pace of this change has provided a formidable challenge for institutions that provide the educational programs for future health care professionals.

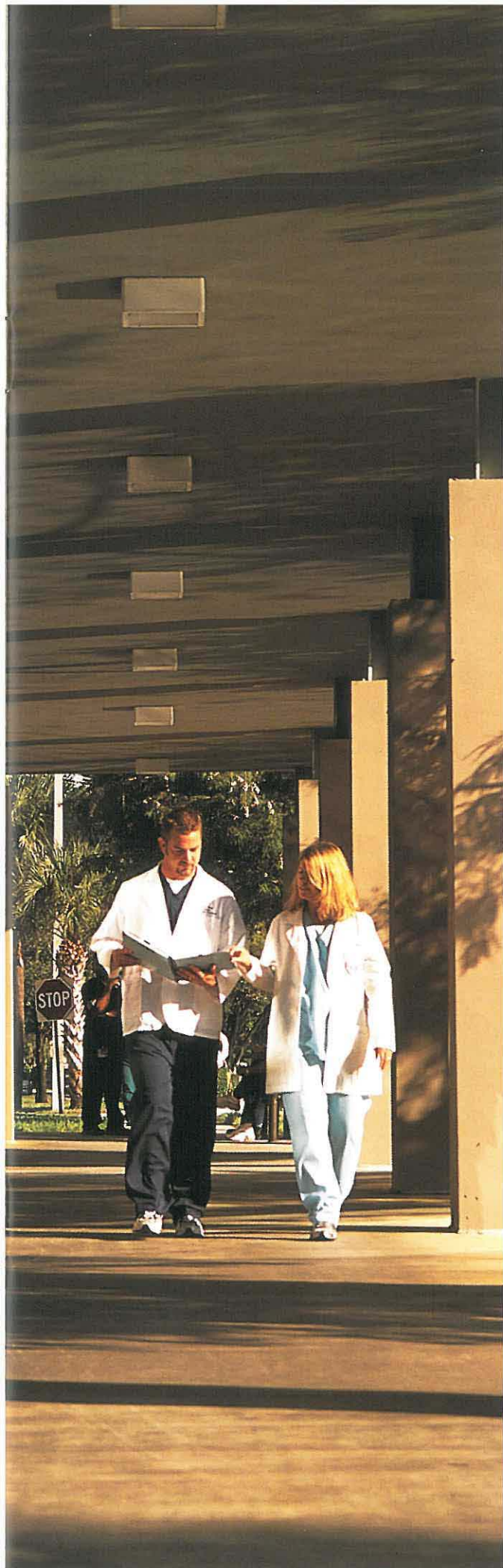
Nova Southeastern University's College of Allied Health and Nursing is committed to providing the highest quality education to students in a variety of health care disciplines, including occupational therapy, physical therapy, and physician assistant studies, as well as audiology and the nursing programs (entry-level B.S.N., R.N. to B.S.N., M.S.N., post-M.S.N. certificate, and Ph.D.). In addition, the college is committed to a lifelong learning philosophy through the Ph.D. in physical therapy and the Dr.OT and Ph.D. in occupational therapy. We also have the bachelor of health science (B.H.Sc.), master of health science (M.H.Sc.), doctor of health science (D.H.Sc.), and transition doctor of physical therapy (T-D.P.T.) programs, as well as the bachelor of health science—vascular sonography and the master of health science—anesthesiologist assistant courses of study. These degrees for practicing health care professionals are delivered mainly through the use of innovative distance technology.

The College of Allied Health and Nursing is committed to providing health care educational opportunities in formats that meet the needs of prospective students in the community and adequately prepare graduates to assume greater leadership roles in health care delivery systems.

A handwritten signature in black ink that reads "Richard E. Davis". The signature is fluid and cursive.

Richard E. Davis, PA-C, Ed.D.

Dean, College of Allied Health and Nursing



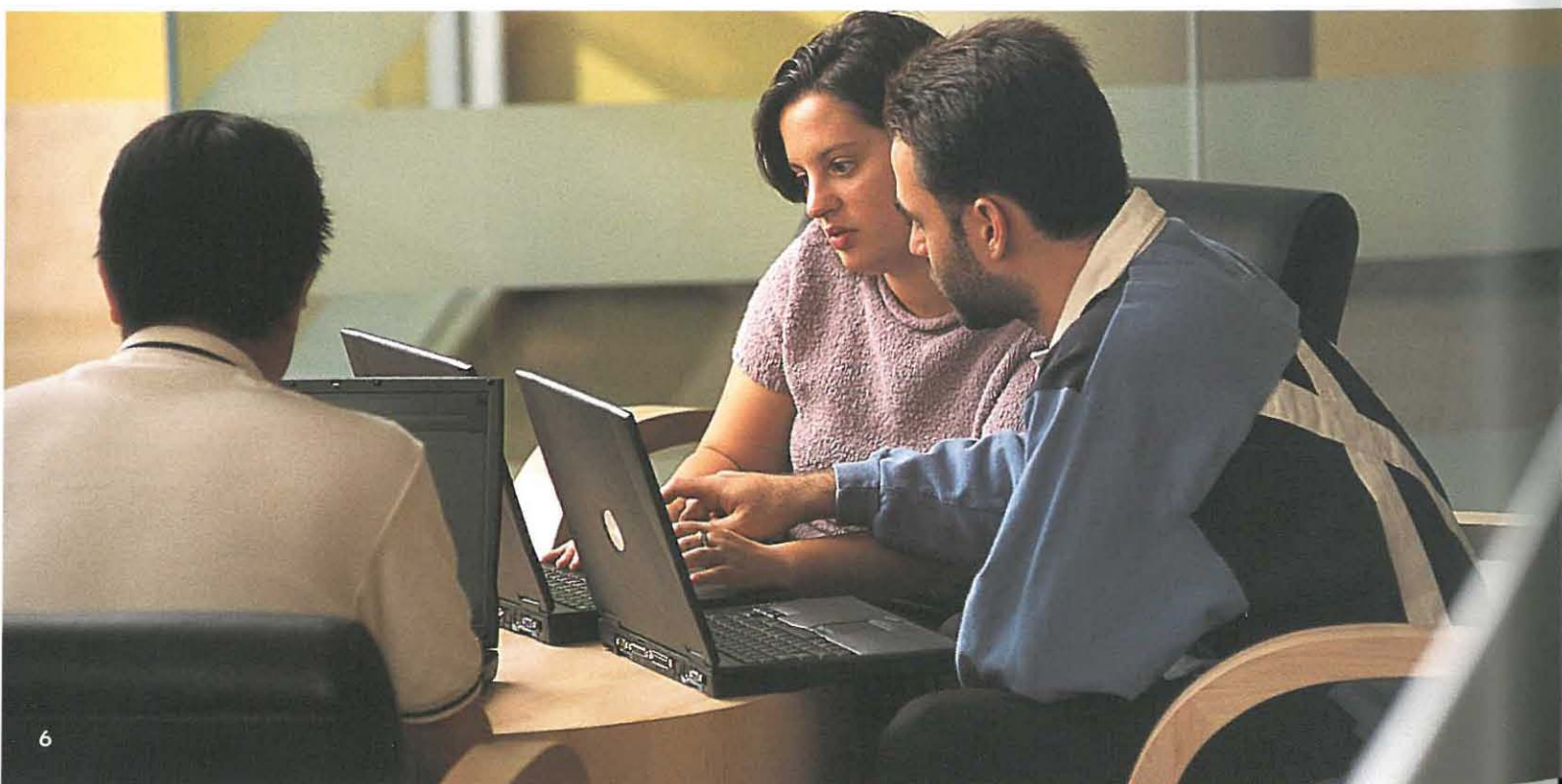
the role of the master of health science program

The M.H.Sc. program is designed to provide health professionals with the theoretical and practical training necessary to enhance career mobility and professional advancement. An increasing number of employers are seeking master's degree level, academically prepared professionals to fill expanded roles in clinical specialization, health education, research, and health care administration.

Midlevel practitioners and allied health professionals practicing today in urban and rural communities throughout the nation are highly recognized as valuable members of the health care team. They help make quality care more accessible, while reducing costs. These health care professionals are playing a prominent and respected role in providing community medical services.

The M.H.Sc. didactic curriculum provides education in a variety of practical and nonclinical areas. The practical component of the program will be tailored to the individual interests and goals of the graduate student. With faculty guidance, students will demonstrate increased understanding in their chosen area of study.

Students will complete an internship and practicum in an area of interest within a health care organization, outside of their regular places of employment. During their practicum, students will develop community-based, health promotion and disease prevention interventions with underserved and/or nontraditional populations.



program features

- quality education in a distance-learning format
- online orientation provided to all new students
- curriculum components tailored to student interests and goals
- specialty tracks or concentrations available (see curriculum outline)
- internship and practicum
- no on-campus requirements (except for students in the health law track)
- up to three years to complete the program
- continuing services to complete the program after three years charged for a maximum of 24 months
- 36 total semester hours minimum
- possibility of transferring up to 6 credit hours from other graduate-level training programs
- full faculty support and advisement
- full technical support, NSU electronic library/database resource access, and university email account
- asynchronous and synchronous formats including email, online forums, chatrooms, phone conferences, and Online Student Center

accreditation and nondiscrimination

The Master of Health Science is an established program within Nova Southeastern University's College of Allied Health and Nursing. This program was officially approved by the NSU board of trustees in 1999.

Nova Southeastern University is accredited by the Commission on Colleges of the Southern Association of Colleges and Schools (1866 Southern Lane, Decatur, Georgia 30033-4097, Telephone number: 404-679-4501) to award associate's, bachelor's, master's, educational specialist, and doctoral degrees. ■ Consistent with all federal and state laws, rules, regulations, and/or local ordinances (e.g., Title VII, Title VI, Title III, Title II, Rehab Act, ADA, and Title IX), it is the policy of Nova Southeastern University not to engage in any discrimination or harassment against any individuals because of race, color, religion or creed, sex, pregnancy status, national or ethnic origin, non-disqualifying disability, age, ancestry, marital status, sexual orientation, unfavorable discharge from the military, veteran status, or political beliefs or affiliations, and to comply with all federal and state nondiscrimination, equal opportunity, and affirmative action laws, orders, and regulations.

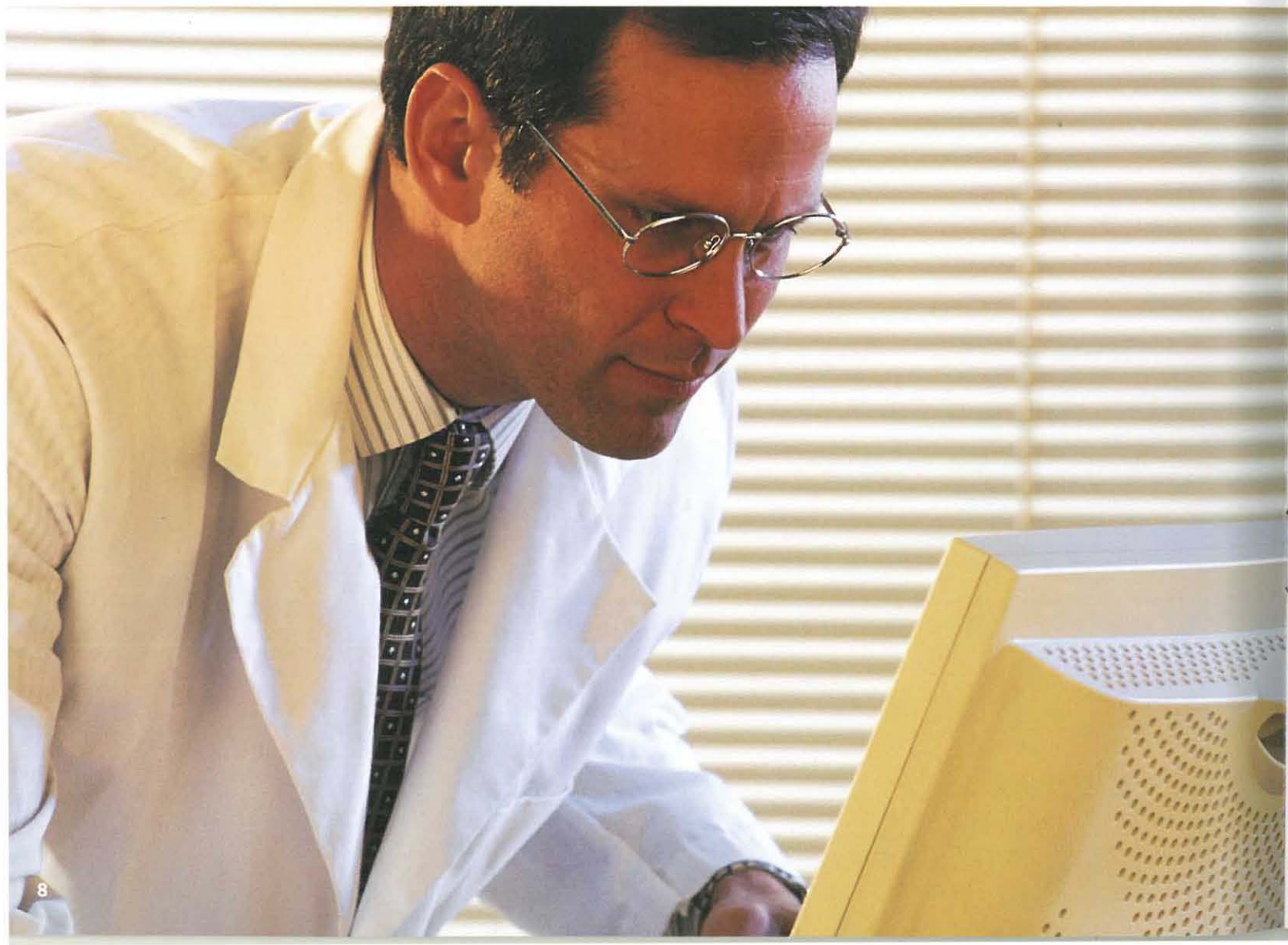
This nondiscrimination policy applies to admissions; enrollment; scholarships; loan programs; athletics; employment; and access to, participation in, and treatment in all university centers, programs, and activities. NSU admits students of any race, color, religion or creed, sex, pregnancy status, national or ethnic origin, nondisqualifying disability, age, ancestry, marital status, sexual orientation, unfavorable discharge from the military, veteran status, or political beliefs or affiliations, to all the rights, privileges, programs, and activities generally accorded or made available to students at NSU, and does not discriminate in the administration of its educational policies, admission policies, scholarship and loan programs, and athletic and other school-administered programs.

curriculum overview

The master of health science curriculum is built upon the existing knowledge base of the health care professional. The program is designed for completion in a distance-learning format and requires no on-campus time, with the exception of students enrolled in the health law track, who will attend one on-campus institute. The coursework is faculty guided, using state-of-the-art, Web-based delivery systems. The curriculum and coursework follow a standard 12-week term calendar.

The curriculum involves completion of a minimum of 36 credit hours. There is some flexibility in curriculum design to accommodate the student's overall interest, employment, and educational goals. Educational counseling and advisement are always available to assist in the planning and registration process.

A multidisciplinary curriculum allows for flexibility, based on a student's needs and objectives. The generalist track allows for maximum elective course availability and includes an extra core course in Health Care Management. Specialty tracks in sports medicine, higher education, health law, and forensic investigative technology are also available. While core M.H.Sc. courses remain constant, the electives, internship, and practicum courses allow the students to tailor the program to their needs and professional interests.



curriculum outline

GENERALIST CURRICULUM—36 CREDIT HOURS

COURSE #	COURSE TITLE	SEMESTER HOURS
----------	--------------	-------------------

Core Courses (17 credits)

MHS 5001	APA Seminar (prerequisite course, must be taken first term of enrollment) . . .	2
MHS 5205	Writing for Medical Publication	3
MHS 5501	Epidemiology and Biostatistics	3
MHS 5510	Research Methods	3
MHS 5521	Ethical Issues in Health Care	3
MHS 5530	Principles and Practice of Management in Health Care	3

Elective Courses

(choose three courses for a total of 9 credits)

MHS 5103	Principles of Advanced Life Support	3
MHS 5211	Contemporary Issues in Nutrition	3
MHS 5400	Directed Studies	1–9
MHS 5541	Health Care Systems and Conflict	3
MHS 5542	Health Care Education	3
MHS 5543	Educational Theories and Psychology	3
MHS 5544	Curriculum and Instruction in Health Care	3
MHS 5545	Assessment and Evaluation in Health Care Education	3
MHS 5546	Health Care Finance	3
MHS 5112	Bioterrorism and Weapons of Mass Destruction	3

Practical Courses (10 credits)

MHS 5107	Internship	5
MHS 5207	Practicum	5

SPORTS MEDICINE TRACK—36 CREDIT HOURS

COURSE #	COURSE TITLE	SEMESTER HOURS
----------	--------------	-------------------

Core Courses (14 credits)

MHS 5001	APA Seminar (prerequisite course, must be taken first term of enrollment) . . .	2
MHS 5205	Writing for Medical Publication	3
MHS 5501	Epidemiology and Biostatistics	3
MHS 5510	Research Methods	3
MHS 5521	Ethical Issues in Health Care	3

Specialty Courses (12 credits)

MHS 5211	Contemporary Issues in Nutrition	3
MHS 5801	Applied Anatomy for Kinesiology	3
MHS 5802	Sports Injury Rehabilitation Principles . . .	3
MHS 5810	Certified Strength and Conditioning Specialist Preparation	3

Practical Courses (10 credits)

MHS 5107	Internship	5
MHS 5207	Practicum	5

HIGHER EDUCATION TRACK—36 CREDIT HOURS

COURSE #	COURSE TITLE	SEMESTER HOURS
----------	--------------	-------------------

Core Courses (14 credits)

MHS 5001	APA Seminar (prerequisite course, must be taken first term of enrollment) . . .	2
MHS 5205	Writing for Medical Publication	3
MHS 5501	Epidemiology and Biostatistics	3
MHS 5510	Research Methods	3
MHS 5521	Ethical Issues in Health Care	3

Specialty Courses (12 credits)

MHS 5542	Health Care Education	3
MHS 5543	Educational Theories and Psychology	3
MHS 5544	Curriculum and Instruction in Health Care	3
MHS 5545	Assessment and Evaluation in Health Care Education	3

Practical Courses (10 credits)

MHS 5107	Internship	5
MHS 5207	Practicum	5

HEALTH LAW TRACK—41 CREDIT HOURS

This track is offered through a partnership with NSU's Shepard Broad Law Center. For the health law track, one residential institute is required on the main campus. The summer institute is one to two days long.

COURSE #	COURSE TITLE	SEMESTER HOURS
Core Courses (14 credits)		
MHS 5001	APA Writing Seminar	2
MHS 5205	Writing for Medical Publication.....	3
MHS 5501	Epidemiology and Biostatistics	3
MHS 5510	Research Methods.....	3
MHS 5543	Principles and Practice of Health Care Management.....	3

Specialty Courses (17 credits—offered through Shepard Broad Law Center)

MHL 1020	Legal Research Methods and Reasoning**	4
MHL 1060	Tort and Contract Law	3
MHL 2030	Risk Management	2
MHL 1030	Administrative Law	2
MHL 1040	Legal and Ethical Issues in Health Care...2	
MHL 1090	Law Accreditation/Licensing	2
OR		
MHL 1080	Law of Patients' Rights and Advocacy...2	
MHS 2020	Legal Negotiation	2

Practical Courses (10 credits)

MHS 5107	Internship	5
MHS 5207	Practicum.....	5

**includes a 1-credit, on-campus institute

FORENSIC INVESTIGATIVE

TECHNOLOGY TRACK—39 CREDIT HOURS

This track is offered in conjunction with NSU's Criminal Justice Institute.

COURSE #	COURSE TITLE	SEMESTER HOURS
Core Courses (14 credits)		
MHS 5001	APA Writing Seminar (prerequisite course, must be taken first semester of enrollment)	2
MHS 5205	Writing for Medical Publication.....	3
MHS 5501	Epidemiology and Biostatistics	3
MHS 5510	Research Methods.....	3
MHS 5521	Ethical Issues in Health Care	3

Specialty Courses (15 credits)

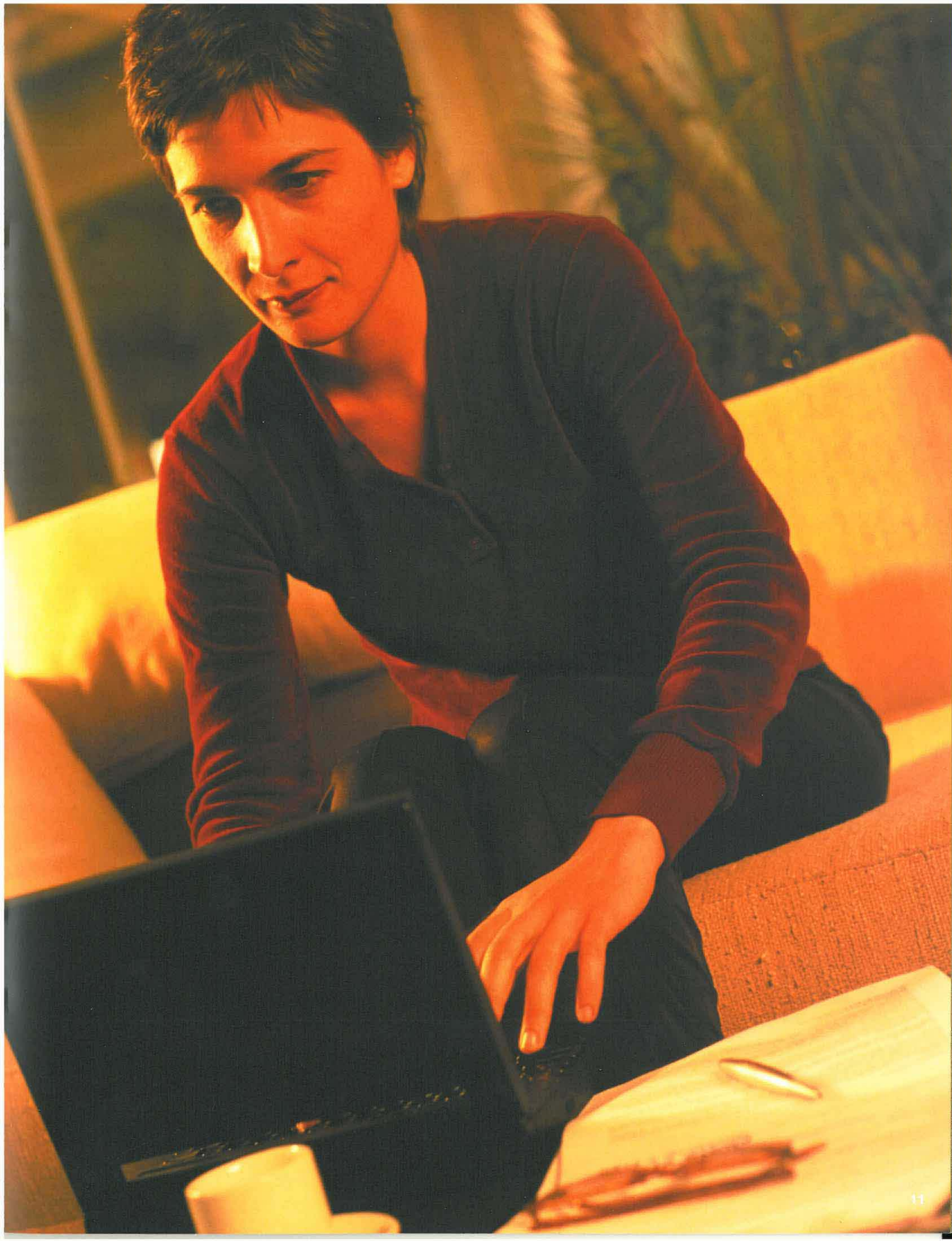
MHS 5611	Firearms, Fingerprints, and Other Impression Evidence.....	3
MHS 5612	Forensic Analysis of Trace and Drug Evidence.....	3
MHS 5613	Crime Scene	3
MHS 5614	Technology That Revolutionized Criminal Investigations.....	3
MHS 5615	Overview of Crime Laboratory Management.....	3

Courses are cross-listed with NSU's Criminal Justice Institute CJI 6111, CJI 6112, CJI 6113, CJI 6114, and CJI 6115.

Practical Courses (10 credits)

MHS 5107	Internship	5
MHS 5207	Practicum.....	5

Students are provisionally admitted to a degree-seeking program based on a review of unofficial transcripts or other specific program admission requirements. However, this admission includes a condition that final and official transcripts, documents, and requirements must be received within 90 calendar days from matriculation. If these final and official transcripts, documents, and/or requirements are not received by that time, the student will not be allowed to continue class attendance. Financial aid will not be disbursed to a provisional/conditional student until he or she has been fully admitted as a regular student (all admissions requirements have been approved by the college/program admissions office). Students who have an unpaid balance 30 days from the start of the term will be assessed a \$50 fee.



graduate distance education

Nova Southeastern University is a pioneer in the area of distance education, having initiated distance education programs in 1972. It was the first university in the United States to offer graduate programs in an online format, with the creation of the electronic classroom. NSU has been offering online programs and programs with an online component since 1983. NSU was also the first to use the Unix system to host online courses, and one of the first to use the Internet to support instruction.

In 1997, *Forbes* magazine ranked NSU as one of the nation's top 20 cyber-universities. Twice in a row, in 1998 and 2001, the *National Jurist* magazine ranked NSU's Shepard Broad Law Center at the top of its list of the most wired law schools in the nation. The university is also listed in *Princeton Review's* *The Best Distance Learning Graduate Schools* (1998).

At NSU, distance education is delivered using a variety of instructional delivery systems. Modes of delivery to students located at sites distant from the main campus include not only online courses via the Internet, but also other modes, such as the traditional classroom setting with a live instructor on-site, compressed video, and audio teleconferencing. Technologies such as the electronic classroom and audio teleconferencing (much like conference calling), add another dimension to the university's distance education programs by bringing instruction to the homes and offices of students.

Some programs use computer or telecommunication technologies exclusively, or in combination with a classroom setting. For example, some graduate programs require students to attend Summer Institutes—short, intensive instructional units on-campus—as part of their required program of study. Distance education students have access to educational support services through the main campus. These include the Electronic Library and computer software on central servers.

NSU students can participate in online courses via the Internet and World Wide Web from almost anywhere on the globe. Online courses involve Web pages to access course materials, announcements, and other information, plus a range of online activities that facilitate frequent student-teacher and student-student interaction. Faculty members and students interact via real-time electronic classrooms, online forums using threaded bulletin boards, real-time chatrooms, online submission of assignments in

multimedia formats for review by faculty members, electronic mail, and the Electronic Library.

NSU offers a wide range of online programs. For example, NSU's School of Computer and Information Sciences has more than 800 online students and offers online master of science programs in computer science, computer information systems, management information systems, and computing technology in education. Many of these programs are now part of the Electronic Campus of the Southern Regional Educational Board (SREB). It also offers Ph.D. programs that use a combined online and on-campus format. Other examples include an online M.B.A. and master's degree in accounting and online courses for teachers.

Over the past five to ten years, many colleges and universities have been developing distance education programs. Nova Southeastern University has more than 30 years of experience in the development, delivery, and evaluation of distance education programs. Approximately 55 percent of all NSU students attend class through the use of some form of distance education modality (e.g., classroom instruction at distant sites, compressed video, and computer-mediated instruction). The university's National Ed.D. Program for Educational Leaders—which began in 1972—and other degree programs have served as models of distance education design for institutions across the nation.



distance education support

Distance education students in the Master of Health Science (M.H.Sc.) program are provided with NSU computer accounts that include email. Students must obtain, and be able to use, their own Internet service providers (ISP) and computer systems (see computer requirements). New students receive a comprehensive online program orientation and extensive support on computer and software requirements, online access, and library resources.

Online interactive learning methods involve Web pages to access course materials, announcements, the NSU Electronic Library, and other information, plus a range of online activities that facilitate frequent student-professor interaction. Faculty members and students interact via online forums using threaded bulletin boards, chatrooms, and email. Students are able to submit assignments as email attachments, through the use of online forms sent directly to program instructors, fax-to-fax, fax-to-email, and through WebCT. Some online courses may include electronic classroom sessions.

Online students have full access to books, journal articles, dissertations, index searches, catalog searches, and reference librarians. The online medical database collection at NSU is extensive and includes access to quality subscription services free of charge to the student.

Distance students may request library materials using fax, mail, or online forms. HPD distance library services are available for all students. All materials mailed by the library are sent by first-class mail. When books are borrowed, the student will have to pay a small charge for third-class postage to return the books. Books are loaned for one month. Periodical copies or ERIC documents need not be returned and are available free of charge.

NSU students involved in distance education are fully supported in their educational endeavors. Great effort has been made to ensure that educational opportunities and quality are in place for each student.

application procedures

Applicants for admission must submit or be responsible for submission of

1. a completed application form along with a \$50 nonrefundable application fee
2. two evaluation forms—supplied in the application package or by request—from supervisors or colleagues, clinical or nonclinical
3. official transcripts sent directly from all previously attended undergraduate, professional, and graduate institutions
4. all coursework from international institution(s), if applicant attended or is a graduate of any international institution(s)

Applicant is responsible for contacting one of the evaluation services listed here. The official evaluation must be sent directly from the evaluation service to the EPS.

World Education Services, Inc.

P.O. Box 745
Old Chelsea Station
New York, New York 10113-0745
(212) 966-6311

Josef Silny & Associates

7101 SW 102nd Avenue
Miami, Florida 33173
(305) 273-1616
(305) 273-1338 (fax)
www.jsilny.com

Educational Credential Evaluators

P.O. Box 514070
Milwaukee, Wisconsin 53203-3470
(414) 289-3400
www.ece.org

5. complete resume or curriculum vitae
6. copies of national and professional certifications or licenses by a recognized certifying body (if applicable)

Complete applications and all admission documentation must be sent to

NOVA SOUTHEASTERN UNIVERSITY

Enrollment Processing Services (EPS)

College of Allied Health and Nursing

M.H.Sc. Program Admissions

3301 College Avenue

P.O. Box 299000

Fort Lauderdale, Florida 33329-9905

Phone: (954) 262-1101

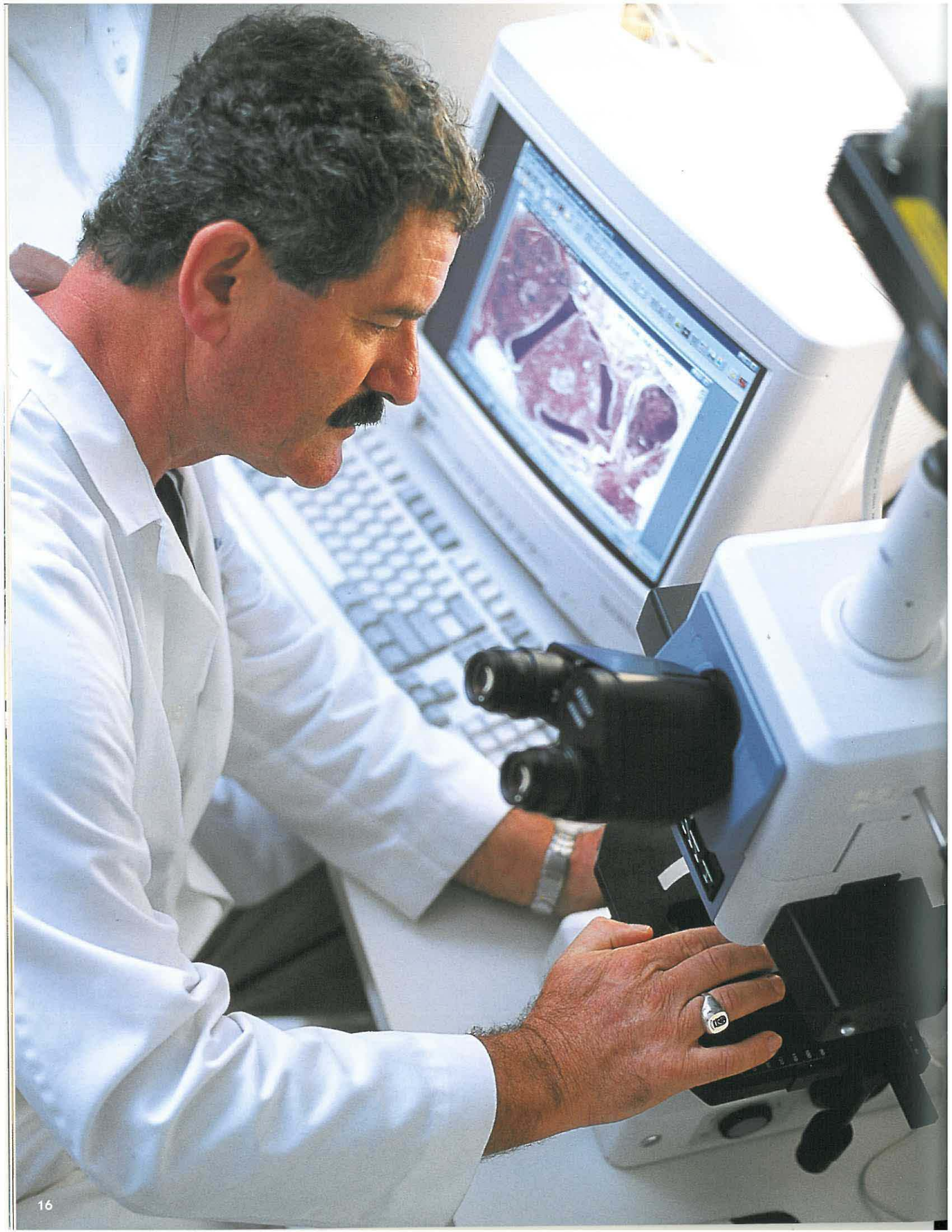
Fax: (954) 262-2282

The M.H.Sc. Office of Admissions works on a rolling admissions basis. Applications are accepted year-round. To ensure that your application receives prompt consideration, you should apply early. All final documentation must be received by the EPS no later than one month prior to your intended registration date.

The M.H.Sc. Committee on Admissions will not consider an application until all required fees, credentials, transcripts, and evaluations have been received by the EPS.

Students can apply online at <http://webstar.nova.edu>.





Prospective M.H.Sc. students are selected by the Committee on Admissions, which considers the overall qualities of the applicant. Areas of consideration include personal motivation, quality and length of prior health care experience, academic performance and level of achievement, life experiences, and personal recommendations. In special circumstances, a personal or phone interview with members of the committee may be required.

- 1.** Prior to matriculation, applicants must have completed a bachelor's degree from a regionally accredited program with a minimum cumulative grade point average (GPA) of 2.5 or higher on a 4.0 scale.
- 2.** Prior health care experience is required. The M.H.Sc. is a post-professional degree designed for health practitioners and clinicians from a wide variety of disciplines. The commonality exhibited by our students is the practice of a recognized health occupation that requires registration, certification, and/or licensure. The successful applicant's health profession emphasizes delivery of services to individuals (e.g., physician assistant, physical therapist, dental hygienist, registered nurse, vascular sonographer, radiology technician, respiratory therapists, etc).
- 3.** All applicants must show evidence of computer skills, through coursework or self-study, prior to the end of the first term. Students may obtain instruction through the NSU Microcomputer Laboratory or other training facilities.

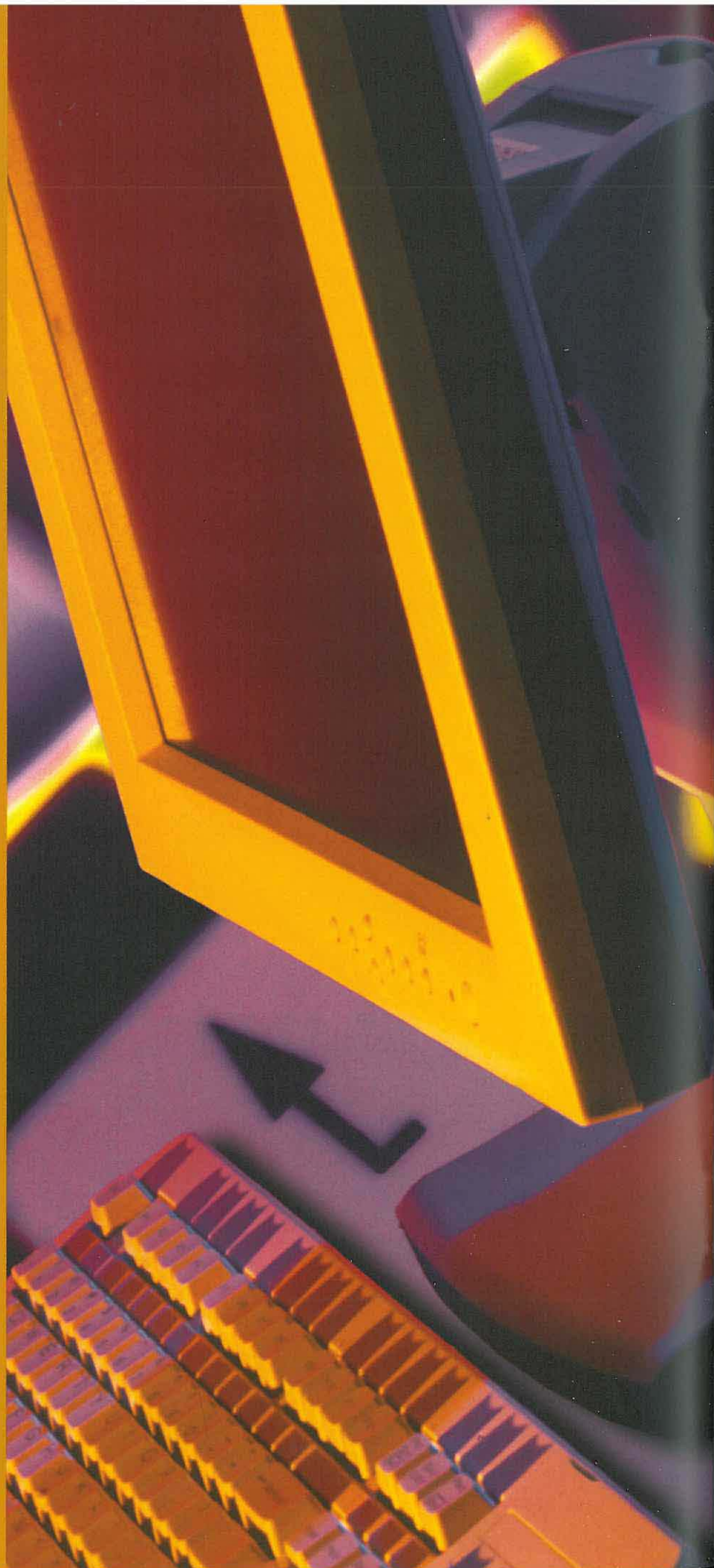
The university reserves the right to modify any requirement on an individual basis as deemed necessary by the dean of the College of Allied Health and Nursing.

admission requirements

computer requirements

All students are required to have a computer with the following minimum specifications:

- Pentium or AMD at 1.00 GHZ or equivalent Macintosh processor
- 256 MB RAM
- video and monitor capable of 1024 X 768 resolution or higher
- CD-ROM drive
- full duplex sound card and speakers
- Internet connection with Internet service provider (DSL, cable, or satellite highly recommended)
- Windows XP or NT or MAC OS
- Microsoft Office 2000 or newer with PowerPoint, Word, and Excel minimum
- printer capability



online medical databases for all nsu students

- AgeLine
- Alt-HealthWatch
- Anatomy.tv
- BestBETs
- Blackwell-Synergy
- Books@Ovid
- CINAHL
- Clinical Evidence
- Clinical Pharmacology
- Cochrane Databases
- Current Protocols
- DARE
- Doctor's Dilemma
- DynaMed
- EBSCOhost
- EMBASE.com
- EXAM Master (USMLE)
- FIRSTConsult
- HAPI
- Harrison's Online
- Hooked on Evidence
- IPA
- ISI Web of Knowledge
- Journal Citation Report
- Lexi-Comp Pharmacy
- MANTIS
- MDConsult
- MEDLINE (EBSCOhost)
- MEDLINE (OVID)
- MEDLINE (PubMed)
- Micromedex Academic—HPD
- Natural Medicines
- Natural Standard
- OSTMEDDR
- OTDBase
- OT Search
- OTseeker
- PEDro
- ScienceDirect
- SPORTDiscus
- STAT!Ref
- TRIP Database
- UpToDate
- Visionet
- Wiley InterScience

tuition and fees

Anticipated tuition for the 2009–2010 M.H.Sc. program (subject to change by the board of trustees without notice) is \$285 per credit hour. An NSU student services fee of \$750 is required annually.

Health Law courses are \$545 per credit hour.

Application fee: \$50

Additional expenses and fees may be incurred. Examples include, but are not limited to, travel to and from campus (where required), graduation fees, books, etc.

financial aid

The primary financial responsibility for a student's education rests with the student and his or her family, but economic circumstances for some families may make it necessary for the student to obtain assistance from other sources.

The purpose of the Student Financial Aid Program at Nova Southeastern University is to help as many qualified students as possible to complete their health professions education. Various loans, scholarships, and grants are available to qualified students to help ease the high cost of a health professions education. These financial assistance programs are described in a separate university publication, *NSU's Guide to Student Financial Assistance*.

For a copy or information, contact

NOVA SOUTHEASTERN UNIVERSITY

Department of Student Financial Aid

3301 College Avenue

Fort Lauderdale, Florida 33314-7796

(954) 262-3380

800-806-3680

terry administration building

FIRST FLOOR

- Student Affairs
- Admissions
- Financial Aid
- HPD Cafeteria

SECOND FLOOR

- College of Allied Health and Nursing
 - Audiology Department
 - Health Sciences Department
 - Occupational Therapy Department
 - Physical Therapy Department
 - Physician Assistant Department

THIRD FLOOR

- College of Medical Sciences
- College of Pharmacy

FOURTH FLOOR

- College of Osteopathic Medicine
- College of Optometry

FIFTH FLOOR

- HPD Administration
- Public Health Program
- Nursing Department
- Area Health Education Center

assembly building

- Finkelstein Auditorium (195 seats)
- Jonas Auditorium (195 seats)
- Melnick Auditorium (125 seats)
- Resnick Auditorium (125 seats)
- Terry Auditorium (125 seats)
- Auditoria A, B, and C (125 seats each)
- Robert A. Steele Auditorium (500 seats)
- Hull Auditorium (250 seats)
- Seminar Rooms

library/laboratory building

FIRST FLOOR

- Drug Information Center
- "Harvey" Cardiac Patient Simulation Room
- HPD Library
- Student Computer Laboratory
- Patient Simulation Center

SECOND FLOOR

- Occupational Therapy Laboratories
- Optometry Laboratories
- Physical Therapy Laboratory
- Student Lounge
- FOMA Osteopathic Manipulative Medicine Laboratory

THIRD FLOOR

- Basic Science Laboratories
- Gross Anatomy Laboratories
- Microscopy Laboratory
- Research Laboratories
- Moran Pharmacy Practice Laboratory
- Pharmacokinetics Laboratory
- Pharmaceuticals Laboratory

pharmacy and pharmaceutical care center

sanford I. ziff health care center

FIRST FLOOR

- Family Medicine
- Occupational Therapy
- Pediatrics
- Dermatology
- Physical Therapy
- Radiology

SECOND FLOOR

- Optometry Clinics
- Optometry Dispensary

THIRD FLOOR

- Business Offices
- Specialty Clinics
 - Cardiology
 - Internal Medicine
 - Osteopathic Manipulative Medicine
 - Pulmonary Medicine
- Emergency Medicine Training Center



dental medicine building

FIRST FLOOR

- Oral Medicine and Radiology Clinic
- Oral Surgery Clinic
- Student Dental Clinic
- Clinic Support Laboratory
- Predoctoral and Postgraduate Oral Surgery

SECOND FLOOR

- Faculty Practice
- Simulation Lab
- Postgraduate Endodontics
- Postgraduate Orthodontics
- Postgraduate Pediatric Dentistry
- Postgraduate Periodontics
- Postgraduate Prosthodontics

THIRD FLOOR

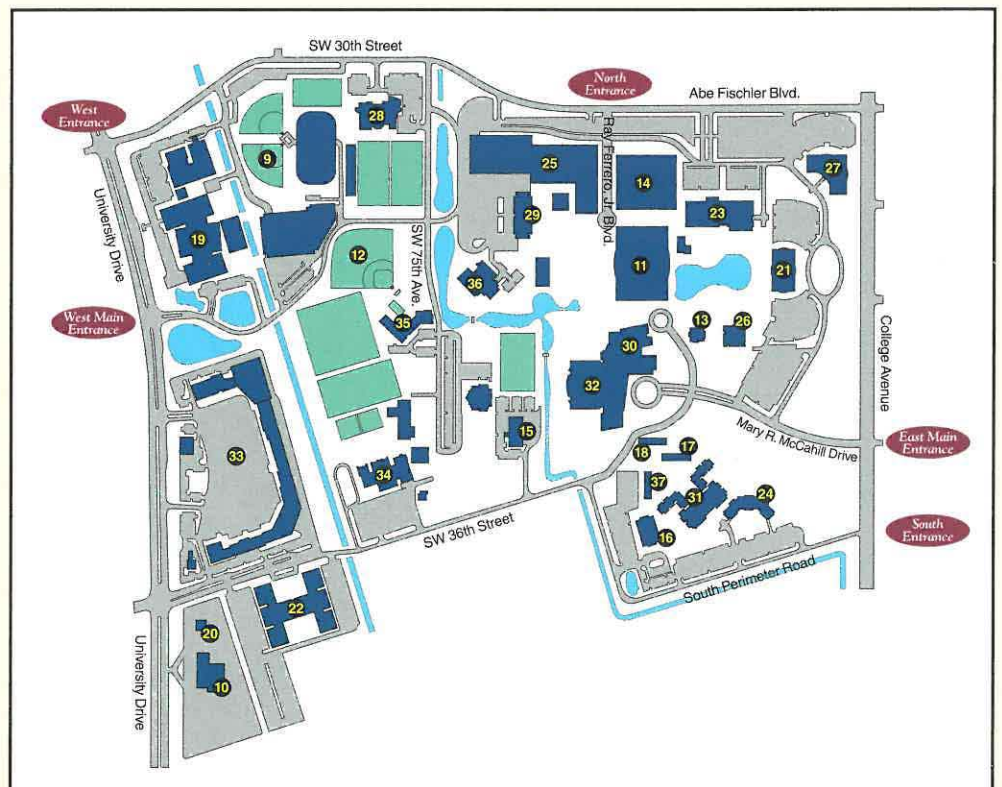
- Auditorium
- Seminar Rooms
- Central Sterilization Area
- Dispensing
- Faculty Offices
- Student Dental Supply Depot

parking garage

hpd assembly building

- Auditorium
- Computer Science Laboratory
- Seminar Rooms
- Physical Assessment Laboratory
- Compliance Office

A.D. Griffin Sports Complex with Lighted Softball Fields	9
Administrative Services Center	10
Alvin Sherman Library, Research, and Information Technology Center	11
Athletics Field	12
Athletics and Student Affairs Building	13
Carl DeSantis Building	14
Central Services Building	15
Cultural Living Center	16
Farquhar Residence Hall	17
Founders Residence Hall	18
Health Professions Division Complex	19
Hearing and Balance Clinic	20
Horvitz Administration Building	21
Jim & Jan Moran Family Center Village	22
Leo Goodwin Sr. Hall	23
Leo Goodwin Sr. Residence Hall	24
Library and Main Student Parking Garage	25
Mailman-Hollywood Building	26
Maltz Psychology Building	27
Miami Dolphins Training Facility	28
Parker Building	29
Rosenthal Student Center	30
The Commons	31
University Center	32
University Park Plaza	33
University School Lower School	34
University School Middle School (Dauer Building)	35
University School Upper School (Sonken Building)	36
Vettel Residence Hall	37





Health Professions Division
3200 South University Drive
Fort Lauderdale, Florida 33328-2018

Office of Admissions
(954) 262-1101 • 800-356-0026, ext. 21101
www.nova.edu