

1-19-2000

The Knight Volume 10: Issue 8

Nova Southeastern University

Follow this and additional works at: https://nsuworks.nova.edu/nsudigital_newspaper

NSUWorks Citation

Nova Southeastern University, "The Knight Volume 10: Issue 8" (2000). *The Current*. 187.
https://nsuworks.nova.edu/nsudigital_newspaper/187

This Newspaper is brought to you for free and open access by the NSU Digital Collections at NSUWorks. It has been accepted for inclusion in The Current by an authorized administrator of NSUWorks. For more information, please contact nsuworks@nova.edu.



The Knight

THE OFFICIAL STUDENT NEWSPAPER OF NSU's
FARQUHAR CENTER FOR UNDERGRADUATE STUDIES

19 January 2000



www.undergrad.nova.edu/novaknight

Bomb Scare at NSU?

by Peter Salerno
Campus Life Staff Writer

Was it a bomb? Could it have been a poor "welcome to the millennium joke?" On Tuesday, December 28, 1999, undergraduate science professor Dr. Velko Dragojilovic found a bottle of picric acid while cataloging and categorizing lab supplies and chemicals. Picric acid, a yellow crystalline solid chemical compound used to stain cells for analysis during biological experiments, also acts as an antiseptic and insecticide. Similar to trinitrotoluene or T.N.T, this

moved to the stock room from Nova's on-campus high school located behind the university's laboratory.

Around 12:40 p.m., one of the laboratory workers called the Davie Fire Department for advice on how to properly dispose of the ten-year-

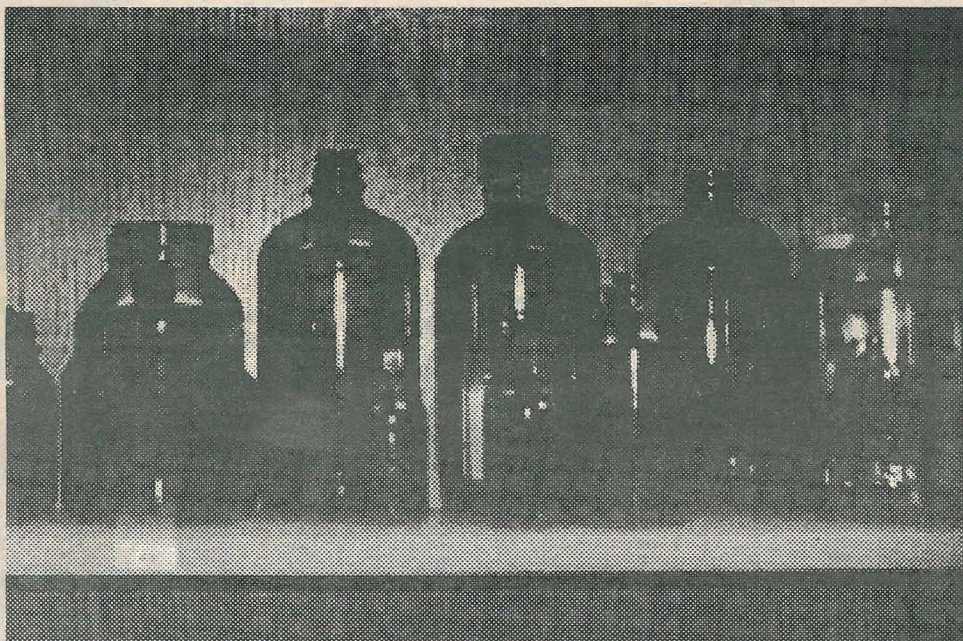
old bottle of acid. Nearly 100 hundred people working in other buildings around the Parker building had to be evacuated, including the Law Center and Sonken Building. Davie police blocked off Southwest 30th street, College Avenue, and South-

west 36th Street, as well as the air space above the campus. Nova Southeastern University's campus lies in the direct flight path of the Fort Lauderdale-Hollywood International Airport, so all the necessary precautions were taken.

Fortunately, around 2:25 pm

(elapsed time of two hours) the Davie bomb squad was able to successfully detonate the acid in a protective container outside the Parker Building. If an explosion had occurred, it could have affected an area within a quarter-mile of the laboratory site. The local news and radio stations reported the incident as a bomb scare because

of all the hysteria of the encroaching millennium. After a free half-day vacation, faculty and staff returned to work on Wednesday, December 29, 1999, to finish out their fiscal year, or more accurately put their fiscal century to an end.



Seemingly "harmless" chemicals can become volatile after a period of years.

-Photo by P. Salerno

particular acid has the potential of becoming volatile and highly explosive. The irony of the incident is that the acid is powerful enough to cause an explosion yet safe enough to pour down your bathroom sink. Sources say that the bottle was

old bottle of acid. Nearly 100 hundred people working in other buildings around the Parker building had to be evacuated, including the Law Center and Sonken Building. Davie police blocked off Southwest 30th street, College Avenue, and South-

William Horvitz, of Horvitz Administration Building fame, passes away

by Alyson M. Dion
Editor-in-Chief

Flags on NSU's main campus sailed at half-mast on December 10, 1999 in honor of William Horvitz, 73, an NSU trustee and a founding board member. Horvitz died the evening of December 8, 1999, at Columbia Cedars Medical Center in Miami.

On December 10, 1999, faculty, staff, students, and community members came to pay their respects to the late Horvitz at a memorial service held in front of the William and Norman Horvitz Administration Building on NSU's main campus. Hundreds of people, many who had to stand through the hour-long ser-



William Horvitz, 73, a leader in community service and NSU supporter, died Dec. 8, 1999.

see A SAD on next page

In
This
Issue

Social Action, Social Awareness (SASA), a new student organization at NSU, explores topics such as bias, discrimination, stereotypes and cultural expectations. See page 9.

Peace in Israel? After years of fighting between the Serbians and the Israelis, one student ventured to the Golan Heights in Israel to see what the arguments have been about. See page 12.

Marijuana is it an increasing health hazard? Or, it is harmless to "just smoke pot?" You decide. This is one student's researched opinion. See page 15.

Evolution and Creationism

by Peter Salerno
Staff Writer and
Joshua Feingold
Faculty Contributing Writer

Who or what created the world that now exists? How did this world begin? On December 9, 1999, yet another interesting topic was discussed as part of the "Blue Tray" series of informal seminars, the controversy between evolution and creationism. Science professors Joshua Feingold and Charles Messing, and Director of the Liberal Arts Department, Ben Mulvey, moderated the talk. Unfortunately, it was held during finals week and not many students attended. There was a lot of student involvement in prior seminars discussing topics ranging from history and mathematics to summer trips to Belize, Peru and Ecuador. Farquhar Center Dean, Norma Goonen, and Associate Dean, Ken Thigpen, developed this series to present enticing topics of discussion among faculty, staff, and students. The discussions typically take place in the Red Room (2nd floor of the Rosenthal Student Center) or in a designated area of the cafeteria.

Dr. Feingold started the talk by presenting that both evolution and creationism are attempts to explain how the diversity of life has come to be on our planet. A fundamental difference is that creationism is based on belief and evolution is based on knowledge gained through observation. Dr. Mulvey followed by noting that religion is primarily based on one's belief in a higher entity.

Thus, when people cannot explain an occurrence in nature, they say that God made it so- this way relinquishes people from having to explaining occurrences in nature. Another important difference between creationism and evolution is that creationism is not falsifiable whereas evolution is. That means that the belief in creation persists even if conflicting data is presented. For example, fossil evidence is used to support evolution, and is either ignored or used as a test of faith by creationists.

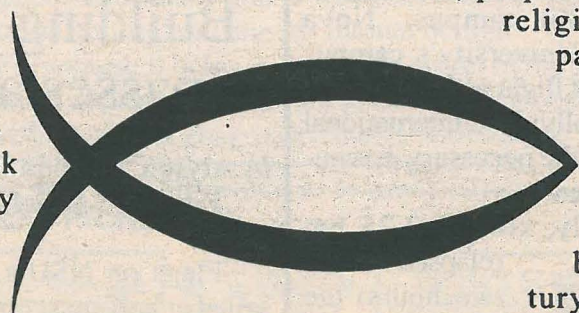
However, people maintain that religious beliefs passed down by God are more significant than an idea devised by a 19th century biologist named Charles Darwin. Some people think that creationism should be taught in schools alongside evolution as a "competing theory". This is exemplified by recent decisions in Oklahoma, Kansas and Kentucky to change the way that evolution is taught in its high schools. Last summer, the Kansas Board of Education established new testing standards minimizing the importance of evolution, and last month Kentucky's Education Department deleted the word "evolution" from its curriculum, replacing it with "change over time." Recently, the Oklahoma State Textbook Committee has

voted to require a disclaimer saying that evolution is a "controversial theory".

In fact, scientific theories are defined as having a large amount of supporting evidence behind them.

see SCIENCE on page 8

It is unreasonable to expect religion classes to teach evolution alongside creation, so why do some people want to force religion into the science classroom?



Alpha Phi Omega *National Service Fraternity*

RUSH WEEK

Monday, Jan 10th: Info Night 6pm in Flight Deck upstairs in the Rosenthal Center -

Free Food and beverages will be served

Wednesday, Jan 12th: Blockbuster Golf & Games party

Thursday, Jan 13th: Jaxson's Ice Cream Parlor 7pm

Saturday, Jan 15th: Service Project at 10am

ALL are welcome to RUSH this is a ***CO-ED*** fraternity for eager men and women of all backgrounds wanting to help in the community.

Contact our Membership VP Shannon Vetter at (561) 483-3966, e-mail her at

vetters@polaris.acast.nova.edu or page the President Eric Camacho at (954) 216-8020 for more information.

Be a Leader. Be a Friend. Be of Service!

A Sad Goodbye, Horvitz

from cover page

vice, joined in observance of the loss of this community leader. NSU President Ray Ferrero, Jr. welcomed everyone and paid a tribute to his friend and NSU supporter. Other friends, as well as his son David Horvitz, spoke not only about Horvitz's keen business sense and charitable actions, but about his great humor as well.

Six days before his death, NSU honored Horvitz and his wife with the President's Community Service Award at the 1999 Celebration of Excellence. He was honored not only for his help at NSU, but for his aid to other South Florida businesses, cultural programs and schools as well. He served as chairman of the Broward Center for Performing Arts Foundation. He also supported the Bascom Palmer Eye Institute, the

Greater Hollywood YMCA, the University of Pennsylvania (his alma mater), Boys and Girls Clubs of Broward, the Salvation Army, Florida Philharmonic Orchestra, the Jewish Federation of Broward County where he was a board member, and the Easter Seal Society.

Horvitz was the former owner of Hollywood, Inc., a company that developed much of Hollywood, including Hollywood Hills, Emerald Hills, Hollywood Mall, the Venture Corporate Center, South Florida Industrial Park as well as many other commercial and residential areas.

Horvitz is survived by his wife Norma, his son David of Fort Lauderdale, his son Wayne Gregory of Charleston, SC, and daughter Linda Roth of West Hartford, CN. He had seven grandchildren.

What's new, Student-Run, and coming soon...

Campus Sports and Recreation Update

by Tom Vitucci
Director of Campus Sports and Recreation

Campus Sports and Recreation kicks off the new millennium with several fun and exciting activities for the month of January. Intramural Basketball leads the way. We have more than 30 teams participating in this 4-on-4 league. Play is conducted Monday through Thursday evenings at the RecPlex.

The CSR Instructional Class Series is also in action. Sign up now to learn or improve your skills in the areas of Golf, Tennis, Swimming, and Martial Arts! Cost for golf, tennis, and swimming are just \$25-\$30 for 6 weeks of lessons. Martial Arts classes meet 2-3 times per week. Cost is \$10-\$20 per month.

We will also be sponsoring our second Deep-Sea Fishing Trip. Come aboard the Flamingo on Saturday, January 22nd. Cost is \$21 for the 4-hour tour! Transportation is provided and required.

Call CSR at 262-7301 for more details and the latest information!

National Italian American Foundation Awards Scholarship to Nova Student

For this new fall term, Nova Southeastern University student Richard Riccardelli received a scholarship from the National Italian American Foundation (NIAF). In 1999, 110 students received NIAF scholarships totaling an estimated \$500,000 while 30 research projects were funded with \$150,000 in grant money.

The NIAF scholarship program was established 23 years ago. It has grown from four scholarships of \$250 each to scholarships that range from \$2,000 to \$10,000 each in the humanities, medicine, engineering, business, music, Italian language and other specialized fields.

The NIAF scholarships are based on financial need, academic merit and community service. Nearly 39 percent of the applicants are from families that earn less than \$50,000 a year, and 63 percent attain a grade point average of 3.5 and above.

To apply for a 2000-2001 NIAF scholarship, visit: www.niaf.org. The application deadline is April 15, 2000.

Nova Gives Back to the Community

by Keith Fousek
Contributing Writer

On Sunday, December 19, 1999, at the Fashion Mall in Plantation, Nova Southeastern University joined the University Middle School of Coral Springs and the University High School to give back to the community. Members of the Phi Alpha Delta Pre-Law Fraternity joined with students and teachers from the different schools to collect toys for underprivileged children. Volunteers staffed the booth for the Salvation Army's Angel Tree Program.

The Angel Tree Program, a wonderful program that the volunteers were all proud to be part of, allowed community members to pick a gift off the "Angel Tree" and purchase it for an underprivileged child. The gift on the card was the request of a particular child and that purchased gift would be delivered to that same child on or before Christmas.

Other toy programs, like *Toys For Tots*, gathers toys and distributes them according to gender. Kids in the Angel Tree program, however, have the opportunity to ask for a specific toy. In this way, the participants in this program had to select and purchase the child's specified dream gift. Moreover, the givers had to put a little more effort, thought and love into the gift. The people purchasing the gifts varied from the average person to NFL players.

The students and teachers from our schools manned the tables where gift cards were selected and the gifts returned. Across the mall, the University High school students and teachers manned the information desk and wrapped presents for shoppers. Phi Alpha Delta provided members on Friday, Saturday, and Sunday. This program has been supported by the three schools for the last few years. There are many ways to volunteer for the community, but nothing compares to helping children's wishes come true at Christmas.

URGENT FAMILY CARE, INC.



James S. Shecter
M.D., F.A.C.E.P.
Medical Director
Board Certified Emergency Medicine

(954) 236-9101

Se habla Espanol.

\$10.00 OFF
for NSU Students W/
Coupon

Open Now!

- Why wait in a busy emergency room?
- Walk in center for minor emergencies.
- No appointment necessary.
- Most insurance is accepted.
- Worker's compensation injuries accepted.
- School physicals
- Immunizations

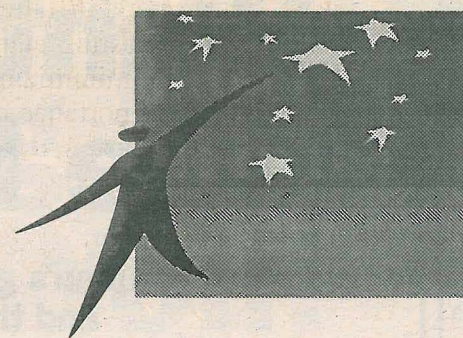
Promenade West Shopping Center

Less than 5 minute drive from NSU,
next to Longhorn Steakhouse
2337 S. University Dr.
Davie, FL 33324

OFFICE HOURS:

Mon-Fri 9 a.m. - 8 p.m.
Saturday 9 a.m. - 5 p.m.

Reach for the stars.



Stretch yourself.

Stretch yourself.

Reach for the stars.

Be a leader—
an undergraduate orientation leader.

Applicants must be currently enrolled at NSU as an undergraduate student, plan to remain enrolled as an undergraduate student for Fall 2000, and be willing to serve as leaders during our Summer, Winter and Evening Orientation Programs.

Benefits include tuition stipend, leadership experience, fun and the thrill of knowing you've made a difference in the life of a new student.

Applications are available in the Mailman Building, Room 222.
Application Deadline is February 14, 2000.

Contact: Madeline Haug Penna, 262-8093, pennam@polaris.nova.edu.

NSU Celebrated 35 Years

by Alyson M. Dion
Editor-in-Chief

Lights, magic, Dr. Charles Messing as the video emcee and a rabbit. That's right, magic, the theme for this year's Celebration of Excellence, permeated the Signature Grand. From the explanatory video that played through the dinner and ceremony to the keepsake momentos, the dining hall filled with a magical feel.

The Celebration of Excellence, hosted by NSU's Board of Trustees, Gold Circle, Alumni Association and the President's Associates, honored the recipients of the President's Community Award, the Distinguished Alumni Achievement Awards, and the Distinguished Student Achievement Award Winners. Not only did this gathering serve to honor certain individuals, but it also promoted NSU's upcoming building ventures. Upon entering the Signature Grand, ushers showed the guests to two rooms: one of NSU past and one for NSU's future. The "past" showed NSU's growth from the very start, including events preceding the start of Nova College in 1964. The "future" shone bright with plans of an athletic field house, the five-story technologically advanced Einstein library and the new extended Family Center.

NSU established the President's Community Award in 1997 to recognize the charitable giving of individuals to NSU. This year's distinguished honorees were William and Norma Horvitz. William Horvitz not only sat on the board of trustees, but was also a founding board member. Further, the Horvitz's were major contributors to the NSU Administration Building, which bears their names. They recently donated a \$1 million towards NSU's Family Center.

Distinguished Alumni, ones who stood out in their particular occupation fields and communities upon graduating from NSU, were also honored at this event. The Distinguished Alumni Achievement Award Winners were: Candy Fish, M.S. (1998, School of Social and Systemic Studies), Ken MacLeod, Ph.D. (1998, School of Computer and Information Systems),

see 35, AND COUNTING on next page

The Flight Deck Hosts Poet Nick Carbo: Quite an Interesting Reading

by Piper Griff
Layout Designer

Just before winter break, the Flight Deck welcomed poet Nick Carbo to the stage. After a brief introduction from Richard Ryal, a board member of Hannah Kahn Poetry Foundation, Carbo hesitantly approached the stage. At first sight, Carbo looked like a shy and rather simple Philippine-American. Surprisingly, Carbo's poetry was intriguing and quite sexual.

In one particular poem, Carbo spoke politically about the exploited treatment of Philippine laborers. One of Carbo's poems questioned the interpretations of dreams and possible psychological meaning of objects. For example, if one dreams of a subway, he or she is dreaming of intercourse, and dreaming of baby corn is the de-

sire of attention from little people. With giggles throughout the Flight Deck, and a few interesting stares, the audience enjoyed a short but sweet reading from this incredible writer.

Carbo's appearance was made possible through a partnership of Hannah Kahn Poetry Foundation and NSU. Hopefully, other events similar to this one will be held at the Flight Deck in the near future. Richard Ryal, an employee at NSU and board member of Hannah Kahn, is working to have more poetry readings with published writers and also people within the NSU community. He has been looking into the possibility of open-mic poetry readings. With the Flight Deck's continual support and amelioration, Ryal is hopeful the NSU community will welcome more events.

Flo Smith and Susan Johnson
Realtors
E-Mail: SMJRealtor@aol.com

NOVA GARDENS
MINUTES FROM CAMPUS
Immaculate 2/2
ROOMY & AFFORDABLE
\$63,300
Call our PROPERTY HOTLINE
474-3663 #504


FULLY FURNISHED
Immaculate 2/2
Southwestern Décor
\$66,900
Call our PROPERTY HOTLINE
474-3663 #508

COUNTRY CLUB MEMBERSHIP INCLUDED
ROOMY 2/2
\$87,500
Call our PROPERTY HOTLINE
474-3663 #390

EXCEPTIONAL 2/2
Owned by Snowbird
ENCLOSED PORCH
Overlooks GOLF COURSE
\$59,900
Call our PROPERTY HOTLINE
474-3663 #512

ROOMY 1 ~ 1&1/2 Baths
Enclosed Porch
\$46,900
Call our PROPERTY HOTLINE
474-3663 #514

~ Faculty ~
Students ~ Personnel
Call Flo and Sue
574-6064
For Professional
Real Estate Service

 Prudential Sechrest Realty
1137 S. University Drive
Plantation, FL 33324
(in Albertson's Plaza)

MCAT

Want to ace the MCAT?

Kaplan's got the answers...
and the questions!

Why do more students choose Kaplan MCAT than all other prep courses combined?
Is it our expert teachers?...Convenient class schedules?...Comprehensive review materials and up-to-date practice MCATs?...Could it be our online MCAT topical tests available 24 hours a day, 7 days a week?

Answer: All of the above.

Classes start February 9!!

Classes are starting now for the April exam.
Call today to enroll!

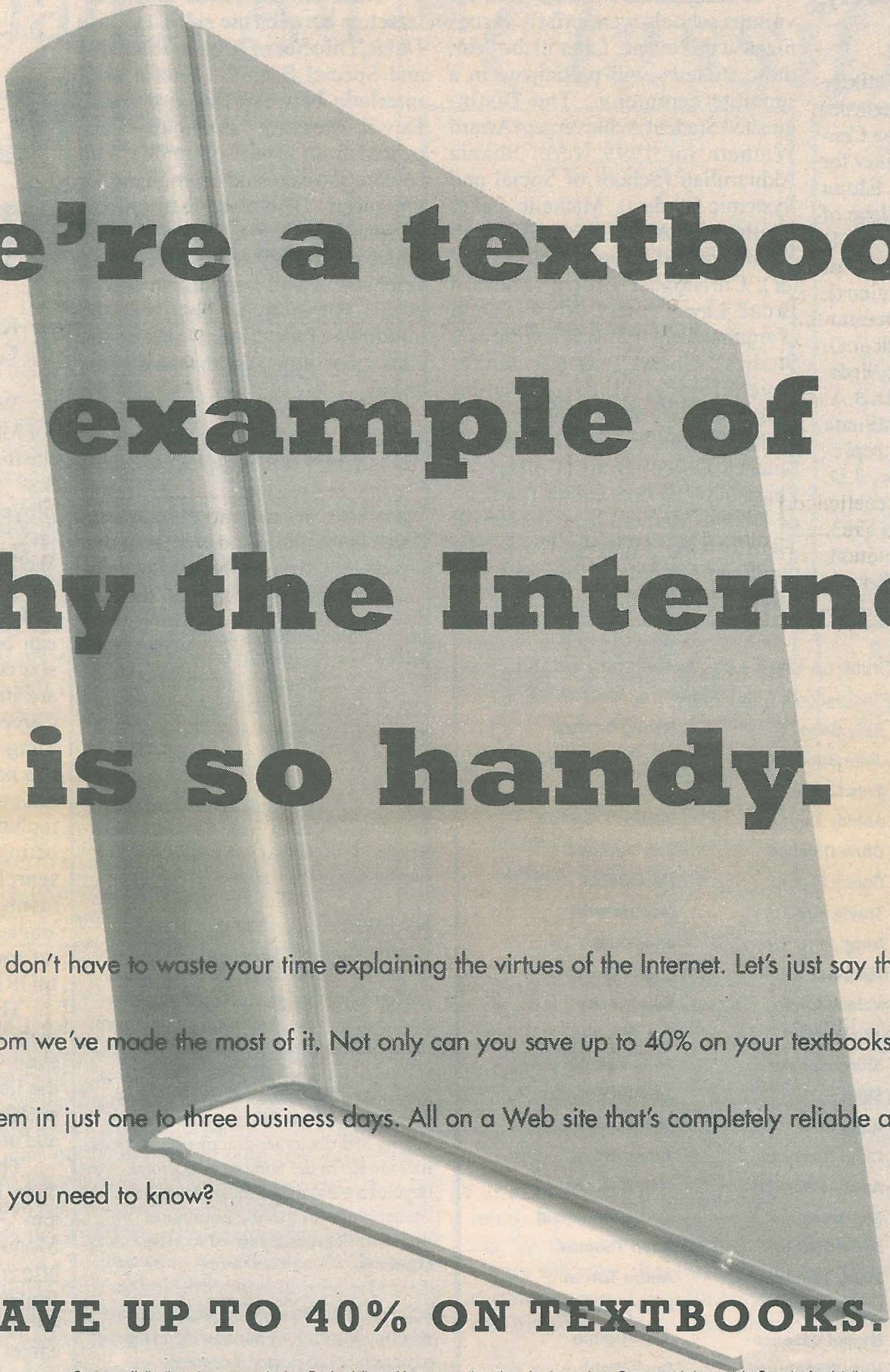
KAPLAN

World Leader
in Test Prep

1-800-KAP-TEST

kaptest.com AOL keyword: kaplan

© 1999 VarsityBooks.com Inc.



We're a textbook example of why the Internet is so handy.

We realize we don't have to waste your time explaining the virtues of the Internet. Let's just say that at VarsityBooks.com we've made the most of it. Not only can you save up to 40% on your textbooks, but you'll also receive them in just one to three business days. All on a Web site that's completely reliable and secure. What more do you need to know?

SAVE UP TO 40% ON TEXTBOOKS.

Savings off distributor's suggested price. Books delivered in no more than three business days. Some restrictions apply. See site for details.

VarsityBooks.com

35, and Counting

from previous page

Carmen Fox, M.P.H. (1996, College of Allied Health), Robert Brzezinski, J.D. (1995, Shepard Broad Law Center), B.S. (1992, Farquhar Center for Undergraduate Studies), Elena Avello, Pharm.D. (1993, College of Pharmacy), Gina Kranitz, Ed.D. (1992, Fischler Graduate School of Education and Human Services), Glenda Kellew, M.S. (1990, Oceanographic Center), James Turner, D.O. (1988, College of Osteopathic Medicine), Donald F. Kuratko, D.B.A. (1984, Wayne Huizenga Graduate School of Business and Entrepreneurship), Bernard T. Moyle, J.D. (1984, Shepard Broad Law Center), Nancy Watson Bacher, Psy.D. (1983, Center for Psychological Studies), and Andrew Tabatchnick (1979, University School).

Distinguished students from the various schools were briefly recognized at this event. Later in the year, these students will participate in a separate ceremony. The Distinguished Student Achievement Award Winners for 1999 were: Shazia Akhtarullah (School of Social and Systemic Studies), Michelle Baker (College of Allied Health), Larry Beerkircher (Oceanographic Center), Christopher Brown (Shepard Broad Law Center), Alyson Dion (Farquhar Center for Undergraduate Studies), Cheryl Luis (Center for Psychological Studies), Naomi Massave (University School), Robert Rhodes (College of Optometry), Setareh Seyedkazeni (College of Pharmacy), Zarina Staller (College of Dental Medicine), and Norrisa Workowski (Wayne Huizenga Graduate School of Business and Entrepreneurship).

The event concluded with an interaction between the video and Lisa Davis, Director of Alumni Relations and Special Events. After a brief interlude between the screen and Davis, Messing "magically" appeared from a puff of smoke with celebration cake and champagne for the guests. The place then glowed as sparklers in the center of some tables seemingly lit themselves in celebration and conclusion of the event. Hopefully by next year, the buildings of the "future" will be the edifices of the past with new dreams ahead.

Nova Nuggets

At the Celebration of Excellence, ushers distributed NSU information sheets to guests. The following is from the "Facts of Interest" information sheet.

In 1967, Nova Southeastern University served an entire student body of 17 from one building. Today, with a fall term (1998) enrollment of 16,921, the 232-acre campus encompasses 40 permanent buildings.

NSU is the largest independent institution of higher education in the Southeast, and among the 20 largest independent institutions in the nation.

NSU has more than 58,000 alumni residing in all 50 states and in 50 foreign countries. Increasingly, these individuals are to be found in the top echelons of business, industry, medicine, government, and education.

Based on a 1997 study of the National Research Council, NSU ranked first among 396 doctorate-granting institutions nationwide in the number of doctoral degrees awarded to African American Students and 14th in the number of doctoral degrees awarded to Hispanic students.

NSU ranked 13th among 396 doctorate-granting institutions nationwide in the total number of doctoral degrees conferred.

NSU awarded two-thirds as many doctoral degrees and more than one half as many first professional degrees to minority students as Florida's entire state university system during 1997-1998 fiscal year.

The Career Corner

by Kimberly Van Buren
Graduate Career Advisor

What is the employment outlook for Marketing Managers? Where are the most job opportunities for teachers? What kinds of skills are employers looking for in new graduates? What is the starting salary for Webmasters?

The answers to these questions and many more career-related issues can be answered at the Career Resource Center. No matter where you are in your academic program, the Career Resource Center has something useful for you. Keep in mind, it is never too early or too late to begin your career plan. Our services include part-time and full-time job listings, career counseling and job search assistance, career assessments, special events including the annual Career Expo, graduate school information, a career library and MORE!

This column will highlight career planning and job search tips, provide event information, new additions to the library, hot web sites for the job seeker, internship/co-op education and other employment opportunities.

The Career Resource Center is open Monday through Friday 8:30 a.m. - 5:00 p.m. and is located in Modular 1. Visit the CRC's website <http://www.nova.edu/cwis/crc> and stop by to speak with a Career Advisor and get registered. The key to career success is a well thought out career plan. Let the CRC help you get on the right career track.

The key to career success is a well thought out career plan.

Does a Deepeer have a Crush on You? Look Below and Find Out...

Delta Phi Epsilon's Crush Party

Luke Albert	Roly Bello	Kenny Brienza
Nick Binetti	Julio Buenano	Arturo Cabellero
Carlos Cadena	Enis Chellew	Nick Claudio
Matt Cleveland	Ashley Cullen	Justin D'Arienzo
Craig Dean	Chris Defelice	Job DeOjeda
Ryan Forkey	Danny Flynn	Mike Gabel
Doug Grosso	Travis Hensley	Matt Henrich
Ryan Hogan	Greg Jorgensen	Jen Joseph
Brad Kaczynski	Marquise Kiffin	Brian Korus
Mark Latham	Nelson Lopez	Sean Leahy
Ogine Lo	Jon Marrota	Eric Mikolitch
Dave Morris	Shawn Mostal	Tony Nakhla
Marc Ochacher	Sean Parkoff	Johnny Peterson
Edwin Pilger	Andy Platt	Jason Portman
Troy Railsback	Chad Richards	Jaron Rider
Roger Roa	Andrew Sacher	Matt Shelby
Shane Solheim	Jed Soto	Kevin Streisfield
Dan Sullivan	Jared Tacher	Allyn Thomas
Steve Thomas	Marty Timmons	Andre Torres
Felix Torres	Tony Troisi	Henry Troung
Chris Vallano	Miguel Vazquez	Joe Virginio
Jay Wagner	Kyle Washburn	Dave Webb
Shawn Webster	Terry Weech	Brandon Weiss
Garrett Weisban	Aaron Wolfson	Chris Zapalski

The party will be held Saturday January 29th at 9 pm. Details will soon follow to those invited. If you have any questions contact Delta Phi Epsilon Social Chair Marya

Kosenkov at Kosenkov@polaris.nova.edu

... The First Annual S.C.O. Speak out Awards ...

The Millennium New Year

by Angel Ali
Staff Writer

The world is still in one piece. There have been no massive catastrophes, no computer meltdowns, no acts of terrorism, and no disasters of global proportions. Could it be that all the hype about 2000 was just that, hype stemming from feelings of expectation and uncertainty? Whatever the case, the world has successfully made it in to the next century and it is finally here...the MILLENNIUM.

All the attention this New Year received definitely did not go unnoticed. To say that most people had some contact with all the publicity is an understatement. It was virtu-

ally inescapable since it was evident nearly everywhere. There were Millennium cups, Millennium bumper stickers, Millennium stuffed animals, even Millennium clothing. News of the New Year ran rampant on TV with headlines to the effect of: "What You Need to Know About Y2K" or "How You Can Prepare For 2000." Therefore, in the months leading up to the big 2000 there were a flood of feelings and emotions centered on this historic occasion. And Nova students were no exception.

Some students felt as though such publicity was unnecessary. "I feel that the whole Y2K issue was over-exaggerated and exploited," said Zakiya Hosein. For some, it was anticipation. These were the indi-

viduals for whom the Millennium might very well have been spelled P-A-R-T-Y! For them it was a time to celebrate, to travel, to be with friends and family, to greet the New Year with a new outlook. Rick Gadh traveled to New York, where the famous Times Square celebration took place. He said, "Being in New York for the New Year's festivities was an absolutely incredible experience." Other students partied closer to home. Noelle Barerra, who attended a block party to celebrate, declared, "I danced my butt off!"

For others, the upcoming New Year caused great concern: Armageddon, the dreaded Y2K bug. Arif Iftikhar remarked, "I was concerned

about the Y2K problem because even though major organizations such as banks and airlines were taking care of the matter, they were still not certain and there was still doubt due to its unpredictable nature."

Yet for others, it was greeted with aloofness: just another year, no big deal. "I knew that on the morning of January first the sun would still rise and there would still be plenty of oxygen to breathe," Andrew Soares said.

Soares's comment remains true and the entrance into the millennium has proved to be a smooth transition. It remains a great event in the history of our lives; it is an occasion we will be sure to tell future generations about in the time ahead.



i am making my mark.
i am open to new things.
and, i am powered by me.

can you relate?

Be part of the
InsideGuide.com team,
or launch your campus
site today! Visit
www.insideguide.com



Check out our networks at www.snowball.com

snowball.com
We are i

The snowball.com networks, where it's at for the Internet Generation.

© 1999 snowball.com, Inc. All rights reserved.

The NSUSGA is Fired Up and Ready For the Millennium

by Jessica Rivera
NSUSGA Public
Relations Director

As the Semester starts, the NSU Student Government Association is still kicking and ready to keep up the good work!

On Jan. 8-9, 2000, the members of the NSUSGA attended a leadership retreat to work on issues such as Team Building Skills and Time Management Skills, How to set an operational objective and the steps required to accomplish said objective, and also the steps required to write and implement legislation once passed. The NSUSGA also established three goals for this new semester: Communication, Service, and Awareness in order to serve the students better. Some of the workshops were presented by Cleveland Ferguson III and Brad Williams. Dean Norma Goonen and Assistant Dean Don Rosenblum were invited to speak. They listened to students' concerns, questions and ideas, and they also provided useful and important information.

The retreat took place in American Maritime Offices, Dania Beach. The facilities and food were provided by one of the NSUSGA members, OSB Justice Dave Merriken. The retreat went from 10:30 a. m. - 7:00 p.m. both days.

During the retreat, the NSUSGA held its first closed Senate meeting of the semester. During the meeting, new members were sworn in by Brad Williams. The new members are Geman Coppola, International Senator; Nicole Robinson, International Senator; Marcy Ochacher, Non-traditional Senator; and Kelsey Shinn, Residential Senator. The new members had the opportunity to formally meet and work as a team with the other members, and apparently everyone enjoyed it. International Senator Coppola said,

"I learned a lot from this retreat and the attitude of the group makes work more energetic. Once again I am thrilled to be part of the NSUSGA, and I am here to help in any way I can..." Not only the new members enjoyed it, but also the old members were very pleased. Commuter Senator Cohen said, "The retreat brought me closer to the people I work with on the



Dean Goonen and Assistant Dean Rosenblum meet with SGA members for one and a half hours to listen to ideas, questions and concerns. It was one of the most productive meetings.

NSUSGA and allowed me to become better friends with them. It helped the entire NSUSGA to prepare for and get excited about the upcoming semester. We are all on the same page now and working for the same things."

President Gilchrist, VPJ Saadeh, and VPL Dean did a great job organizing this retreat and making it possible. They found a way to keep everyone entertained with the different workshops, meetings, and games. Senator Ochacher said, "The retreat was a lot of fun, yet educational." IOC Senator, Rabia Halim said, "The SGA retreat was very informative. I became a Senator later in the fall term, so I didn't know how to write legislation or what SGA's realm of responsibility is. I also got to know my fellow SGA members better. I am glad I attended."

The retreat was a big success, and hopefully all this positivism will stay within the members of the NSUSGA throughout the term. As VPJ Saadeh said, "...[T]he retreat was very beneficial not only for SGA, but for the entire University because SGA has begun to work on many new projects to benefit the undergraduate students."



Pictured above are members of the NSUSGA Senate. Starting from bottom leftside: IOC Senator, Rabia Halim; Non-Traditional Senator, Marcy Ochacher; Commuter Senator, Shawn Mostal; Minority Senator, Olga Martinez; International Senator, Nicole Robinson; Commuter Senator, Abby Cohen; Freshman Senator, Candice Correno; Freshman Senator, Jessica Montes; International Senator, Geman Coppola; Residential Senator, Kelsey Shinn; and IFC Senator, Joe Ricupero.

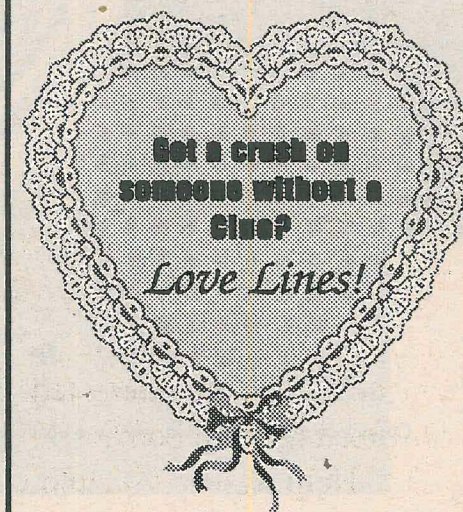
Science or Religion

... the continous debate

from page 2

Evolution is no less robust a theory as gravity or the Copernican model of our Solar System (in which the Earth revolves around the sun). It is unreasonable to expect religion classes to teach evolution alongside creation, so why do some people want to force religion into the science classroom?

In addition, Dr. Feingold explained that there is confusion between evolution as a fact, and the process by which evolution occurs. We have been able to observe evolution indirectly through fossil evidence and directly in species, such as bacteria, that evolve quickly. There is no dispute that bacteria have evolved resistance to certain types of antibiotics, much to the dismay of our physicians that now have a more difficult task in controlling infection. There are many ways that evolution can and does occur, and this is where much of the scientific debate resides. In addition, evolution is a slow and expanding process that occurs over a large time frame which makes the scientific explanation of evolution quite unconvincing. If it were possible to physically see, for example, the growth length of a giraffe's neck then perhaps evolution would become a more accepted theory. Unfortunately, we must rely on several hundred million-year-old information presented to us from fossils and various other samples.



SASA: Social Action, Social Awareness

A New Organization at NSU

by **Alison Balkan**
Contributing Writer

A new student organization is coming to Nova Southeastern University: SASA, which stands for Social Action, Social Awareness. This group will explore contemporary social issues that confront college men and women across America. This organization is for everyone who is concerned about or affected by bias, discrimination, harmful stereotypes, or cultural expectations. Cultural values affect our public lives as well as our private lives, and influences the way we think about ourselves, and act as a measure of our own self-worth.

Formed by Alison Balkan and Becky Bible, SASA's faculty advisor is Dr. Kate Waites, a Professor in the Liberal Arts Department, coordinator of the Gender Studies Minor, and founder of NSU's Women's Resource Institute. SASA plans to have monthly meetings with possible sub-groups that can meet more often and focus on particular issues that interest them. Times and dates of the meetings can be changed or rearranged depending on when group members can meet. SASA will focus on raising awareness and organizing actions

related to social and gender issues. Using articles and books, and by conducting various events, SASA's goal is to help students and young adults learn to examine social problems and how they are affected by them. Not only will SASA assess modern society, but it will also draw on past theories and ideas about human development, such as Foucault and other philosophers.

As SASA's first contribution to Nova Southeastern, it is honored to present speaker Marsha Flood from the Renfru Center for Eating Disorders. Eating disorders plague young women and men due to societal pressures. SASA hopes to have other speakers come to Nova and speak on various issues as well. All who can attend are welcome and encouraged to listen to Marsha Flood on January 19th, Wednesday, from 7pm-9pm at the Flight Deck Theatre in Rosenthal. She will begin with a film and then speak about eating disorders followed by discussion.

For additional information, please contact Kate Waites at 262-8216 waitesk@polaris.nova.edu, or Alison Balkan at 262-6352 ali_cali@hotmail.com.

DO YOU NEED HELP WITH YOUR LSAT?
DO YOU WANT TO BECOME BETTER AQUAINTED
WITH LAW SCHOOL RECRUITERS?
DO YOU NEED A RESUME BOOSTER FOR LAW
SCHOOL?
THEN YOU SHOULD RUSH PHI ALPHA DELTA PRE-
LAW FRATERNITY!!!

The time has come again to RUSH Phi Alpha Delta Pre-law Fraternity. This is an organization that accepts all majors and is aimed at helping its members meet the right people for law school and beyond. We will be recruiting new members for our rush period, which is 1/17-2/5. We only meet once a month and we coordinate our meetings with legally relevant events. If you are interested, please contact pswank@hotmail.com

Help us help you and others become the most well-rounded potential law student possible.

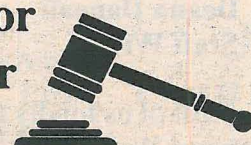
THE NSUSGA HAS SOME POSITIONS OPEN!!!!

2 Athlete Senators

1 Commuter Senator

1 Minority Senator

1 OSB Justice



You can get your application from the
SGA Office (Flight Deck room #207) or you
can contact us at: 262-8459 or
nsusga@list.nova.edu.

APPLY TODAY!!!!

ARE YOU RENTING?

*Look at the chart below to
see what you will spend...*

Monthly Rent	3 Years	5 Years	10 Years
\$500	\$18,810	\$32,323	\$69,871
\$600	\$22,572	\$38,788	\$83,845
\$700	\$26,334	\$45,253	\$97,819
\$800	\$30,096	\$51,717	\$111,793

Assumes a 3% Annual Inflation Rate (Historical average is closer to 5%)

That money will be gone forever!

For what you are spending in rent, you could be paying on a mortgage, building equity and owning your own home.

If you've been thinking about making a move...

CALL DEBBIE!!!

**CALL TODAY for
FREE BUYERS BOOK**

**Homes and Condo's near
NOVA-SOUTHEASTERN!!**

Debbie Bates
Prudential Sechrest Realty
1137 S. University Dr. Plantation



236-7036

debbie@debbiebates.com

Sleepy Hollow Will Tickle Your Macabre Tastebuds

by Deana Daneau
Staff Writer

Most of us fondly remember the animated Walt Disney feature "The Legend of Sleepy Hollow"—a must see for any child. Dark and scary for some, but dreamlike and full of intrigue for others. I'd venture to bet that director Tim Burton fell into the latter category. Just take a look at the some of the artist's prior projects (*Beetlejuice*, *Edward Scissorhands*, and *Ed Wood*) and you'll know that he can take the bizarre and run with it—creating eccentric visual effects and showcasing even more unusual characters. Of typical Disney tradition he is not (albeit he did work for Walt Disney) and neither is his *Sleepy Hollow* that oozes his signature macabre elegance.

Constable Ichabod Crane (portrayed by Burton favorite Johnny Depp) is an outspoken young detective, confident that he can personally update the legal system's investigative practices for the new millennium—1800. With courtroom rantings resulting only in the irritation of the judge, Crane is sent away to the New York hamlet of Sleepy Hollow to investigate a serial killer who seems to be ridding town folk of their heads! No doubt, the judge presumes Crane will either use or lose his as well.

Warily, Crane finds his way into the gloomy village that is enveloped



Another Teen in the Music Scene: Mandy Moore

by Angel Ali
Staff Writer

There is yet another female teen artist who has emerged in the music industry and become an overnight craze for teen music lovers everywhere—Brittney Spears you say? Guess again. Nope, it's not Christina Aguilera either. Try Mandy Moore, although the similarities between the three are well worth taking note of: all are young, all are blonde, all have voices that are nothing exceptional yet are made popular by catchy songs, and all have become almost instant teen sensations.

Moore, now fifteen, is living a life few teenagers could fathom. With the December 7th release of her debut album "So Real," her own web site at www.mandymoore.com, and a concert tour with the Backstreet Boys on the way, Mandy Moore is flying high. Just how long her fame will last depends. It depends partly on her talent and partly on her appeal to her audience. Although her singing is nothing all that exceptional, that small detail has become obscure to a teen crazed music industry that has become much more concerned with inciting immediate results than with producing longstanding singing careers.

As far as appeal to audience, that is one thing that Moore has plenty of. If there is one thing that Mandy

is good at it is using her youthfulness for her advantage. Aside from attracting her audience with her innocent, girl-next-door looks, Moore's new CD is filled with songs that reflect her age and in which the social aspects of being a teenager are the predominant theme. The popular *Candy*, for instance, alludes to the stage of boy-craziness that young girls often go through. The music video for *Candy*, depicting Moore with a group of girl friends and her eye on a particular guy only serves to prove this. *Walk Me Home* is another such song that describes the longing of a girl to have the boy she is fond of walk her home. There is even a brief interlude in her new CD entitled *Telephone* which has Moore's voice on an answering machine with a friend leaving her a message, and what is associated more with teenagers than the phone? Still other songs like *Not Too Young* and *Love Shot* convey the self-confident attitude and sassiness that comes with being a teenager.

Whereas the content of her music is relatively constant, Moore's sense of musical style varies from song to song. Songs such as *So Real* and *Lock Me In Your Heart* as well as *Candy* have an upbeat, rock-like style. On the other hand, Moore attempts a more plaintive approach in songs such as *Walk Me Home*, and



Quit Breaking My Heart where the beat is much slower. However, this variety only goes so far. You can not help but get confused with regards to which is which in the upbeat songs since there is little variation in instruments, sound, or style approach not to mention the fact that Moore's ability to change her method of singing with the mood of her songs is lacking. Therefore, her new CD can become long and dragging especially to individuals whose taste in music tend to include originality and creativity. Overall, Moore's boost to stardom as well as her capability of staying up there is questionable. But whether you want to be part of this mainstream fad, or prefer holding to your own standards is a matter of personal preference and judgement. So why not check out Mandy Moore's new CD and decide for yourself.

by an omnipresent fog and stricken with a sense of vigilance. Though victimized and oppressed, the town has a weighty group of elders with whom Crane meets for details surrounding the murders. Assured that tales of a sword-wielding headless horseman are nothing more than superstition and folklore, Crane looks to the suspicious elders to uncover secrets that they are so obviously hiding. As "superstition" realizes itself in the

form of a true headless killer, Crane is left with more bodies with which he can practice his knack for forensics and piece together this mounting murder mystery.

Sleepy Hollow is nothing less than exquisite. Burton's vision of the Sleepy Hollow tale is so well executed on celluloid that an ironic breath of life is brought to the old macabre legend. Burton's traditional artistry (animation— as mentioned earlier) translates to a live, fantasy-like aesthetic that distinguishes himself from any other filmmaker. And

it's no doubt that his directorial style and enthusiasm play a large part in evoking strong characters from his talented cast members. Johnny Depp becomes Ichabod Crane—astute and perhaps a bit persnickety with detail, brimming with confidence and yet waning at the sight of gore. Crane is no longer the lanky, bumbling Disney image, but rather a very human, ambitious man worthy of the audience's empathy (this is a honed talent—he did the same as Ed Wood.) Depp's idiosyncratic facial

see BURTON on next page

... nominations coming soon ...

Talented Mr. Ripley?

by Caleb Kennedy
Contributing Writer

The *Talented Mr. Ripley* is the film about a young man named Tom Ripley (played by Matt Damon) from the United States who cons a wealthy industrialist into believing that he knows their wayward son, Dickie Greenleaf (played by Jude

everyone but Dickie's girlfriend Marge (played by Gwyneth Paltrow).

This movie had high points, but overall it was stagnant as if the director was reluctant to cut out any scene. Matt Damon did well portraying an evolving dark and evil man who is also introspective, but it was not enough to carry the movie, which



Law). The deal is that Mr. Greenleaf will pay Tom \$1000 dollars if he can convince Dickie to return from Italy. Tom finds Dickie and tells him that they both attended Princeton. In an important scene, Tom explains to Dickie that his three talents are being able to forge any signature, impersonating almost anyone, and telling lies. Tom is soon welcomed into Dickie's world and agrees to help Dickie spoil his father's plans. Dickie is tired of Tom, whom he considers a freeloader, and his mysterious background. Tom kills Dickie assuming his identity and manages to evade being caught by blaming all of his actions, on Dickie. Tom fools

seemed to drag on interminably. The movie strongly reminded me of *The Picture of Dorian Grey* by Oscar Wilde, a story about an amoral rich young man whose corruption and age are trapped in a portrait. In the movie, the same hedonistic and secretive actions of Dorian are mirrored by Tom, the only major differences would be the time period and that Tom had to scheme to get his money. The movie was so long. I am still trying to get my brother's girlfriend to pay for my ticket with little success. I wrote this article to prevent any other broke college students from wasting good beer money on this movie.

Burton Keeps the Legend Alive . . .

from previous page

expressions along with the character's blatant fears allow for great comic relief and a nerve of satire to be revealed.

The cast is of many—too many to all be named. However, with a range from Christina Ricci (*Adams Family*, *Buffalo 66*) to a strangely unbilled Christopher Walken (*The Prophecy*, *The Dead Zone*), it need not be said that each

greatly contributes to the film's ethereal diegesis. With the directing, visual design, talented actors, and riveting special effects, there's truly no force that can keep this film from galloping to the top of the charts. And though it might be exciting, fascinating, even spellbinding, I suggest you not lose your head over it; the legend will live on...videotape.

A Review of John Updike's *Rabbit Run*

by Michael Citron
Associate Editor

Well, here it is, another novel that will open your eyes to reality. Being students, we sometimes do not realize until it is too late what life has in store for us after our collegiate careers. John Updike, the author of *Rabbit Run*, certainly provides this perspective in his novel.

Harry Angstrom, a former star basketball player in high school nicknamed Rabbit, is in his mid 20s. His work has become unfulfilling, his marriage is sickening, and he attempts to find happiness with another woman. But unlike his success as the town basketball hero, this achievement becomes much more elusive than a medal. Angstrom runs from everything in his life: his wife, his job, and even from himself. He reaches the end of the road and has to turn back and try to put the pieces

back together.

For Angstrom, Life is no longer as simple as putting the basketball through a hoop. He struggles throughout his life trying to become a strong individual by doing the right things. But, he encounters difficulty in communicating, and as a result, is misunderstood. This makes him constantly frustrated by his actions and expectations of others. *Rabbit Run* asks many questions about the responsibility individuals have to a society and about growing up in America.

see UPDIKE on page 15

John
Updike
rabbit, run

Rock Climbing

954.321.9898

Friday
Night
STUDENTS
climb 1/2
price
with current ID

3400 SW 26th
Torr. #A4
Fl. Lauderdale
33312

W-Fri 3pm-10pm
Sat & Sun 10am-5pm

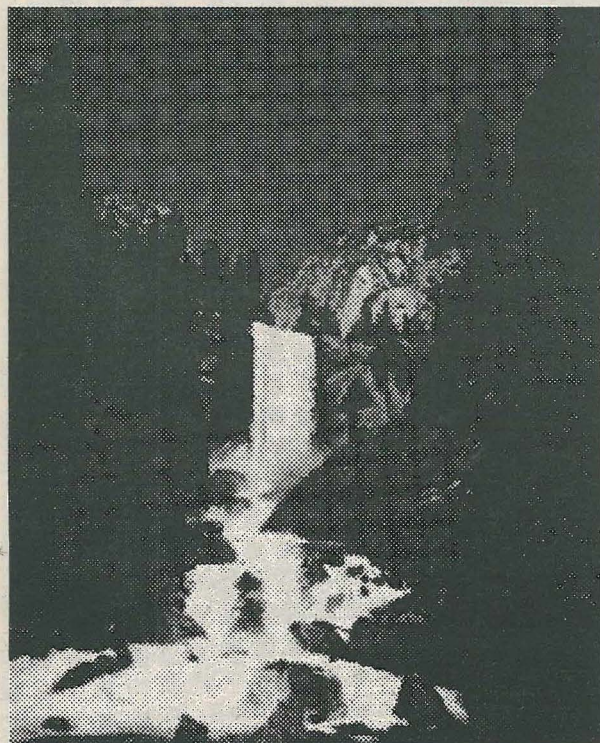
lessons • gear rental

Peace in Israel in the Near Future

by Kyle B. Washburn
Staff Writer

Recently talks between the Syrians and the Israelis have begun in Sheppardstown, West Virginia. The main area for argument is the Golan Heights located in the far northeast section of the current Israeli border, a small area of land, 485 square miles. This land has been the cause for debate since it was acquired in 1967 after the Six Day War. Recently, I visited this revered land and the area in question.

During my journey, the landscape quickly changed from a desert to the plush flowing landscape of the mountains. I learned that it was the Jordan River that provided this area with its fertility. Because of this, the land is highly farmed. The vegetables from this area feed an entire nation. Not only does the Jordan provide irrigation for the fields, but also provides 30% of Israel's water source. Any arrangement with Syria must include access to this resource, or southern Israel will wither and die. The present day border assures a water supply for Israel.



A waterfall that can be found in the beautiful area of Golan Heights

This land is also a mountainous region giving it a natural military outpost for Israel to watch its neighbors. While in the area, I took a jeep tour through these mountains and viewed the land first-hand. My guide cautiously pointed out the old Syrian bunkers that looked over the now Israeli occupied settlements. There are 33 communities and 18,000 residents in this area. Giving this area up would truly be giving up a major military position. All around me were remnants of mine fields, still alive. Many have been cleared for farming, while others still pose a threat from the past. If Israel were to keep the Golan Heights, eventually all these mine fields would be cleared making more room for agriculture.

Talking with many Israeli soldiers about how they felt about this land they were protecting, I asked if they would be willing to give up the Golan Heights for peace. The responses were vastly different. One soldier said that he would do anything for peace. Another soldier responded by saying, "if we give up the Golan, where do we stop giving?" Maybe he is right. He fears what will happen to the farmers who have worked these fields their entire lives. The people of Israel are split on what to do with the Golan. Some want immediate peace, while others feel it would be unwise to give up a national treasure.

After hearing the opinions of the people of Israel, learning about their history, and seeing the land for myself, I am inclined to agree with the idea to keep the Golan. The Israelis have worked too hard to keep this small area of land theirs and not only that, but they have also improved

the land, so they can feed a nation. With the thousands of immigrants pouring in each year, Israel needs this land to feed its people and to protect itself from the bordering hostile nations. So, when Israel brings this issue up for referendum (the first in the country's history), I would

vote to keep this great land. My voice is not alone; there are many who will stop at nothing to keep this great land together.

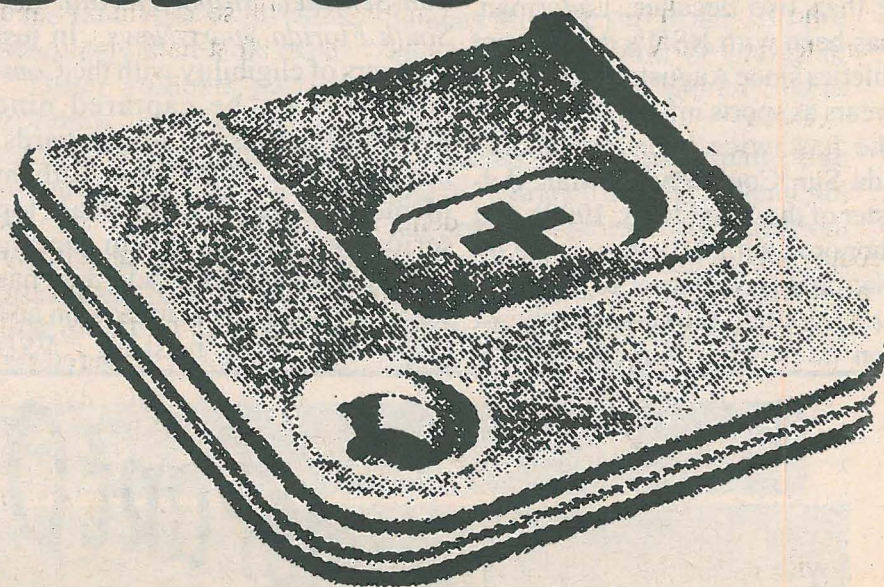
Talking with many Israeli soldiers about how they felt about this land they were protecting, I asked if they would be willing to give up the Golan Heights for peace. The responses were vastly different. One soldier said that he would do anything for peace. Another soldier responded by saying, "if we give up the Golan, where do we stop giving?"

Logos Institute International Club of Nova Southeastern University Presents:

- Weekly Prayer Meetings and Bible Studies at NSU campus on Thursday nights at 9:00pm, in Rosenthal Center, 2nd floor of the Flight Deck, Room #208.
- Seminars on topics such as HIV/AIDS, Preventive Health, Social Work, Civil Law, Justice & Government, Christian Education, and Training in Leadership and Education from a biblical perspective
- Biblical Education on the Creation, Redemptive, and Cultural Mandate of Jesus Christ

We invite every student, faculty, and staff of NSU to join us in the above events. For more information please contact Kayla at 262-6603 or email us at kyriakik@cps.nova.edu

Is this a test you are afraid to fail?



If a plus like this is really a negative, come see us.

We care.

We want to help.

We can keep a secret.

And we're free.

HOPE
PREGNANCY CENTERS
of Broward

Call 1-800-395-HELP
We have offices across
Broward to help you.

Davie: 581-6991 • Ft. Lauderdale: 568-2616 • Miramar: 442-9638

Laderman resigns as Nova SID

Press Release

Mike Laderman has resigned as Nova Southeastern University's sports information director, his last day being slated for January 8, 2000. He has accepted an offer to become the University's associate director of public affairs, effective the 10th of January.

A resident of south Florida for more than two decades, Laderman, 31, has been with NSU's department of athletics since August, 1995. In his five years as sports information director, he has twice been named the Florida Sun Conference's Male Administrator of the Year (1998, 1999), and was honored with the same award by the National Association of Intercollegiate Athletics (NAIA) Southeast Region in 1998. His media guides

have also caught the attention of the national office, taking eighth place among combined basketball brochures in 1999, and seventh place in the 1998 multi-sport brochure category.

Laderman came to the Knights after a nine-year career as a local sportswriter, penning stories for such tabloids as the *Community News*, *Sun-Sentinel*, *Miami Herald*, and *South Florida SportsNews*. In just six years of eligibility with the *Community News*, he captured nine Florida Press Association awards, including the 1995 Sally Latham Memorial Award for Florida's top serious editorial column among weekly newspapers. Laderman has also been on the local television and radio airwaves, hosting "NSU

SportsBeat" on four Broward County cable systems from 1995-98, calling play-by-play for Comcast Communications (1994-95), and handling color commentary for Sunshine Network's broadcast of the 1998 Florida Sun Conference men's basketball championship game.

"Leaving NSU's department of athletics was not an easy decision to make," Laderman said. "I've gotten the chance to work alongside some fantastic people, and have had the opportunity to share the lives of many incredible student-athletes. I will definitely miss it here."

Laderman will remain in his role as both the Florida Sun Conference's and NAIA Region XIV's sports information director through the end of the 1999-2000 intercollegiate season. He resides in Weston with his wife, Kim.

FUNDRAISING OPPORTUNITIES

Raise money for your club/organization by promoting products and events on your campus.

- * Great earnings
- * Set your own hours
- * No sales involved

American Passage Media, Inc.
Campus Rep Program
Seattle, WA

800.487.2434 Ext.4651
campusrep@americanpassage.com

Become Part Of A Super Team:
Become A Resident Advisor!

Resident Advisor (RA) applications for the 2000-2001 academic year are ONLY available at the following RA Information Sessions:

TUESDAY, JANUARY 18, AT 9:15 PM*
WEDNESDAY, JANUARY 19, AT 9:15 PM*
THURSDAY, JANUARY 20, AT 9:15 PM*

* All located in the Goodwin Residence Hall Glassroom.

For more information, please contact Rick Mayfield,
Director of Residential Life at (954) 262-7052.

... Tune into radio X 88.5 FM and read
The Knight newspaper for details!

Marijuana: An Increasing Health Hazard

by Nicole Robinson
Contributing Writer

" 'Just smoking pot.' That's a phrase often heard these days. Just smoking pot. After all, almost everyone knows that heroin or acid or crack or inhalants is 'worse' than smoking pot. But that doesn't make smoking pot good. Cancer, after all, might be worse than a broken leg, but who wants either?" says Walden Pransky.

Pot, or marijuana, has become an increasing problem among American teenagers. According to

Pransky, 70 million Americans over twelve have used marijuana at least once, and the amount of people smoking marijuana has doubled since 1992. Teenagers will do anything to get that "high" that has come to be their best friend. Although marijuana can be used to treat certain illnesses, when this drug is abused it can cause permanent, long term complications in a teenager's health.

To understand why marijuana is so harmful, one must have knowledge about the drug. Pot, dope, weed, herb, and Mary Jane are only a few of the slang terms used for marijuana. According to Judy Monroe, the drug actually comes from a hemp plant called *Cannabis sativa*. The main ingredient in marijuana is THC, delta-9-tetrahydrocannabinol, but it contains 400 other chemicals as well. The smoke from marijuana is comparable to cigarette smoke, if not worse. It contains toxic chemicals similar to those in tobacco smoke, including carcinogens such as tar,

carbon monoxide, and cyanide. Barbara Ravage stated that, one joint, or marijuana cigarette, is as harmful to the lungs as five regular tobacco cigarettes. Just imagine smoking five cigarettes at one time. At least cigarettes have a filter; marijuana cigarettes do not.

When pot is first inhaled into the body, changes immediately

begin to occur and a certain "high" can be obtained. Judy Monroe explained the symptoms of that "high" well when she said, "The immediate effects of

marijuana use can include: problems with short-term memory and learning; distorted perceptions of sights, sounds, time, and touch; trouble with thinking and problem solving; loss of coordination and balance; an increased risk of anxiety and panic attacks; and a higher risk of engaging in unsafe behaviors, which can result in car crashes and other serious problems. Mood changes similar to mental illnesses can also occur. These may involve a loss of the sense of self, rigorous anxiety and panic attacks, hallucinations and delusions, and paranoia. Those are only the short-term effects. Imagine what will happen if marijuana is smoked on a regular basis.

Heavy smokers of marijuana create long term effects in the body, especially psychologically. Marijuana is classified as a psychoactive, which is a "mind-altering drug," because it

see THE POT on page 18

Classifieds

CHILD CARE PROVIDER

12 and 13 year boys
from 4 PM to 7 PM

Mon. - Fri.

Female or Male

\$7.00 per hour

In my home

Wester Pembroke Pines

Call Hilda 1-800-579-1879

or

(954) 430-6718

Hottest New Internet Product of the Millennium

Easy sale to students and others.
Unlimited income.
Work whenever/
wherever you wish

Call Renee
(954) 478-6355

NOIZE POLLUTION

Earn \$\$ promoting bands
for major record
companies around
town & @ shows.

Visit

www.noizepollution.com
to fill out an online
applications.

ROOM FOR RENT + PRIVATE BATHROOM

Perfect for studying
Private section of new home
Oakridge Davie Community
12 minutes from Campus
Non-smoker
Healthy life styles only
No pets
\$500/month + Portion of utilities

Call Jill (954) 989-4585

Updike's Rabbit Run

from page 11

Rabbit never can make up his mind. He runs and runs always looking for the easy road, which never comes his way. Rabbit, by not accepting responsibility for his family and himself, becomes less than human.

Rabbit's high school basketball coach and the town preacher try to lead him in the proper direction. Rabbit is reluctant to change and remains in his world of delusion. Similarly in my last review of Saul Bellow's *Seize the Day*, both characters are faced with life choices that if incorrectly made will cause not only their own failure, but also their family's demise. Will Rabbit have a breakthrough in the end like Tommy did, or will he keep on running until

he cannot run anymore?

Angstrom, like many Americans, has to go through trials and tribulations to achieve happiness and success. Without hard work and persistence, this becomes impossible and may lead to ultimate failure. Will Rabbit try to regroup and become a man or will he keep running from reality? This book is certainly worth picking up for any person, especially college students. Rabbit is in his mid 20s, and his life is already about to crash. This proves how even at a young age, many unforeseen problems may arise.

If you have any suggestions for future book reviews or want to comment on one of my reviews, please email me at citronmi@polaris.nova.edu. I would love to hear some feedback.

Giving Back During the Holidays

by Michael L. Citron
Associate Editor

Despite the mass commercialism that appears during the holiday season, there are ways to exhibit real acts of kindness. This year like in the previous three years, I donated a large number of Ty stuffed animals to the Joe DiMaggio Children's Hospital as get well presents. I was able to get many of the local merchants to donate nearly one thousand dollars worth of toys to this cause.

I gave the animals to the young patients as they finished their radiation treatment. You cannot imagine how I felt when I was able to see for myself how these gifts took away some of the pain that the children experienced during their treatments.

Each year I will try to continue this holiday tradition of mine, as I believe this is the true meaning of holiday spirit.

When I delivered the gifts, Doris Sipos CFRE, executive director of the Memorial Foundation-Joe DiMaggio Children's Hospital Foundation, made me feel like a million dollars. She could not have treated

me any nicer if I was a celebrity. Ms. Sipos told me that each and every gift was very important, and that both she and the rest of the staff fully appreciated any and all donations. She even took a picture of the two of us with some of the toys for the Memorial newspaper.

This was not a hard job at all! It took very little effort, and the time spent was extremely rewarding. Ms. Sipos told me that all new toy animals are always appreciated. I would like to thank Gifts of Nature and Marie's Hallmark for their help and generosity.



The Holidays: Cheer or Fear?

by Alison Balkan
Contributing Writer

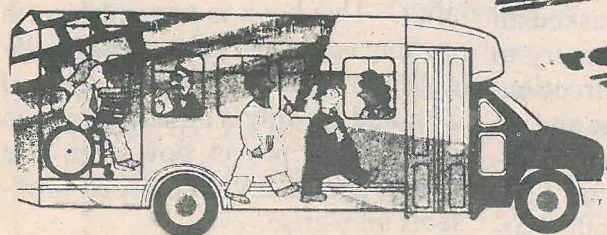
With the coming of each holiday season and the New Year (this time the new millenium) lurking right behind it, the health club and fitness industry has developed an ingenious marketing scheme. You have all seen those health club advertisements where scantily clad men and women prance across our television screens flexing their taut muscles and sleek physiques. These people are perfect – they are society's ideal population – they are society's definition of beauty. The health club experience is now a place where your self-esteem is measured by your body fat. Diet and exercise no longer go with health and fitness. Now, diet and exercise mean achieving that completely ridiculous body ideal – the perfect waist, slender hips, or rippling muscles. It is not enough to feel physically fit and healthy, but now you have to achieve that societal beauty, otherwise you're not

working hard enough on that stair climber.

In one particularly outrageous commercial, Bally Total Fitness poses the question: "So, what are the holiday's giving you this year?" Then middle-aged men and women are shown opening Christmas gifts and exclaiming, "I got a double chin!" or "All right – a big butt!" To be frank, I am disgusted by this commercial and so should you. They are taking a wonderful time of year and using it to instill a fear of food and celebration in the American population. It is bad enough that our society judges us based on our physical appearances instead of our hearts or our minds, but through the pressing influence of the media we are being forced to focus on our physical appearances even more. We are spiraling downward into a shallow society in which success and wealth are judged according to clothing size.

The bottom line is that these commercials play on our own concepts of self-perception. They make us feel bad about our bodies and wish that we could be fitter and more attractive. How do they do it? Simple – by equating holiday cheer with

see HATED on page 18



Get On the Bus...It's Free!

For more Information, call 1-800 234-RIDE (7433)
or (954) 370-8307

after: **60**
RIDERS WANTED

WANTED:
Riders to enjoy the
benefits of FREE,
convenient transportation
to the Davie Campus.

**Ride the SFEC/Tri-Rail
Express Bus**
1-800-234-RIDE (7433)

Catch a free ride from the Fort Lauderdale
Tri-Rail station to campus and back on the
Free SFEC/Tri-Rail Express Bus Service.

Discounted Tri-Rail passes are available to
students, faculty and staff of the South
Florida Education Center (SFEC) which
includes Broward Community College
(BCC), Florida Atlantic University (FAU),
Florida International University (FIU),
McFatter Technical Center, Nova
Southeastern University (NSU) and
University of Florida (UF).

328 MI-
TEQUESTA
VISTA TIT
HOUSE S.
LAUREL O.
9723. Man

Angstrom
6671 W.
744-2

10 L
HUR/2
2/2
2/2
PRIDE
3BR/3
Fork
13
\$251.00
100 (6)

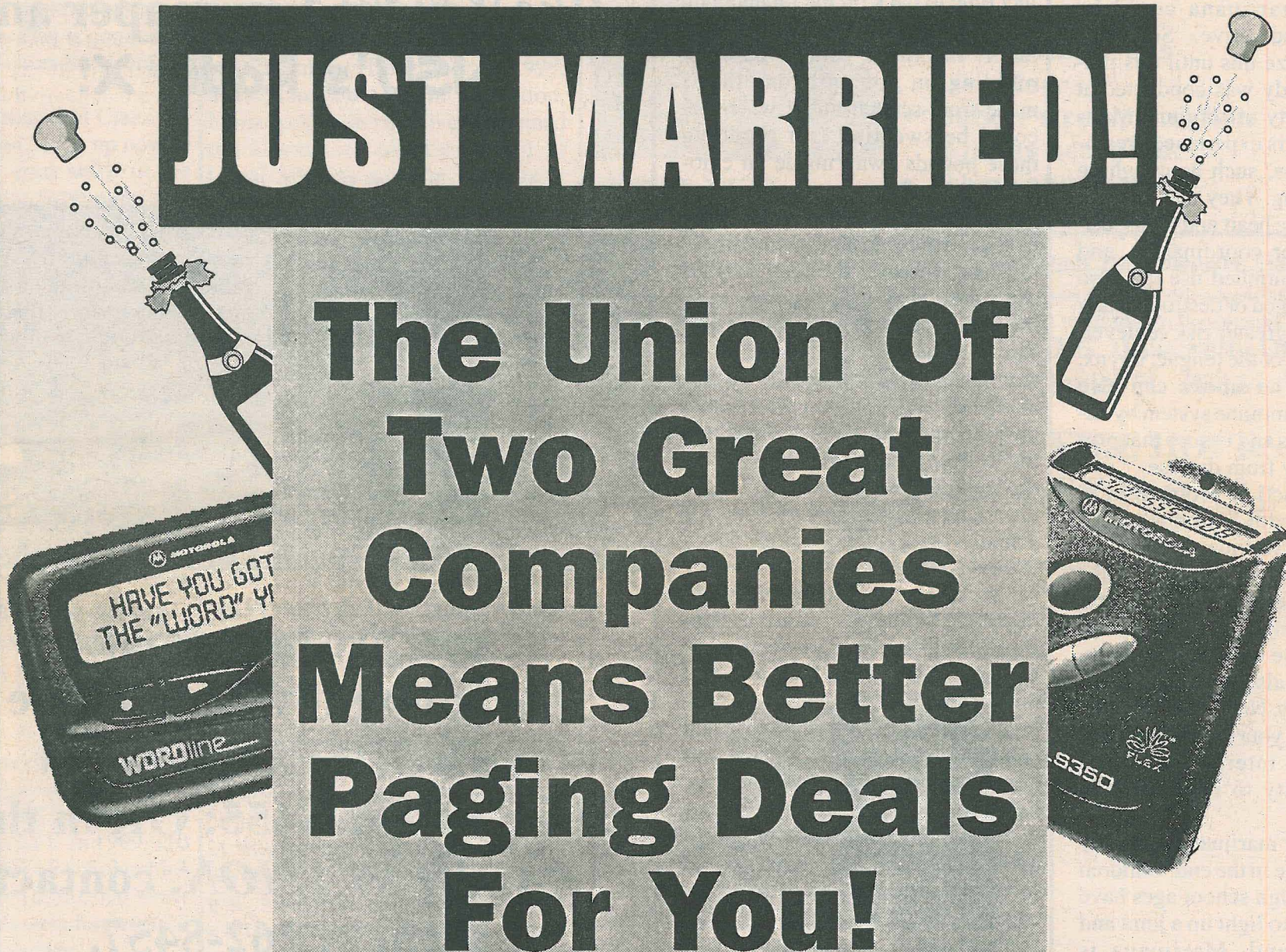
3BR. 1
Mr. C
Red
ANGS
661-1

BLI
M

South Florida
Education Center
Transportation Management
Association



JUST MARRIED!



The Union Of Two Great Companies Means Better Paging Deals For You!

Bring in this ad for **ONE MONTH FREE** Paging Service



A more personal paging company.

(561) 394-4444
2266 N Dixie Highway,
Boca Raton

(954) 351-5000
1000 NW 65 Street, # 201,
Fort Lauderdale

(305) 227-6482
9533 SW 40 Street,
Miami

The Pot Problem

from page 15

changes the way the brain works. Physical problems can occur as well. A new study just proved that smoking marijuana could be physically addictive. Scientists did not realize this until this preliminary study was conducted at the University of Virginia. Marijuana smokers experience breathing problems, such as coughing and wheezing. They can develop damage in the heart and lungs, disrupted motor coordination, and lethargy. Continued use can also lead to damaged or destroyed lung tissue and a greater risk of developing cancer of the tongue, larynx, and lung. The smoke can also damage the immune system by destroying cells and tissues that protect the body from disease.

Reproduction problems can also occur with continual marijuana use. Marijuana users can receive low sperm counts in men and an interference with menstrual periods, owing to a disruption of eggs from the ovaries in women. Males may also experience delayed puberty. Not only will marijuana disrupt your mental abilities; it will also interfere with the body's ability to function normally.

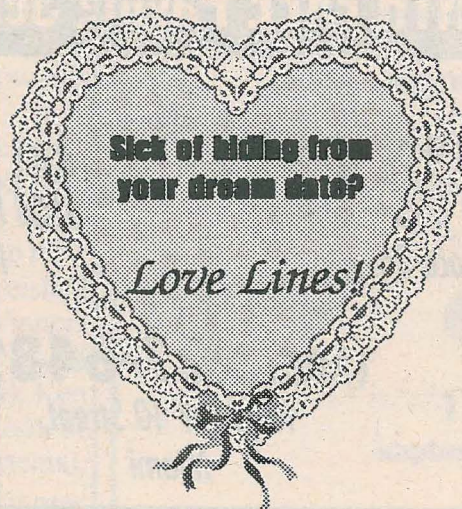
Smoking marijuana will only lead to trouble in the end. Children lower than high school ages have even started to light up a joint and join the trend. Marijuana is thought to be a pathway drug that leads to other drugs. "The marijuana of today isn't often the same as the 'weed' of 20 years ago. Forget that image of happy flower children wandering around full of peace and love. Today's reefer is much more potent and much more damaging. The latest research is revealing more clearly than ever 'before the negative impact of smoking dope' says Pransky. Many teenagers who smoke marijuana try to think of it as being natural. It is only natural when it is planted in the ground, not when it is being wrapped up and smoked into the body for mere pleasure.

Hated Holidays

from page 16

food fear. The holidays are the perfect time to pack on the fat and gain weight. Why sit around recounting family memories with loved ones, nibbling on your grandmother's made-from-scratch-fudge, when you could be sweating and shedding those pounds away inside an emotionless, unforgiving gymnasium? What's more enjoyable than being held captive by an unrelenting treadmill and a trainer shouting in your ear, "Take it up a notch, now raise the incline?" Yeah, that sounds like fun. I would much rather be doing that than spending quality time with my family - NOT. Don't these health club people realize that there is a much deeper meaning underlining the tradition of the holidays? It is unfortunate that they must draw our attention away from our families and towards our waistlines.

We do not need to fear the coming of the holidays. Tradition, family, and holiday cheer are much more important than the shallow ideals that this society tries to emphasize. Body image is far from the importance and potential of the mind. Without our hearts and our minds, what would we be? Our bodies are nothing but vehicles for the great inner workings of our souls. But, these vehicles need food for energy and they can become over-worked if we are not careful. For once, put those nagging body images aside and focus on what's important this holiday season - love and family.



What is S.C.O. ?

The Student Communications Organization, whose members are
The Knight Newspaper and
NSU's Radio X!

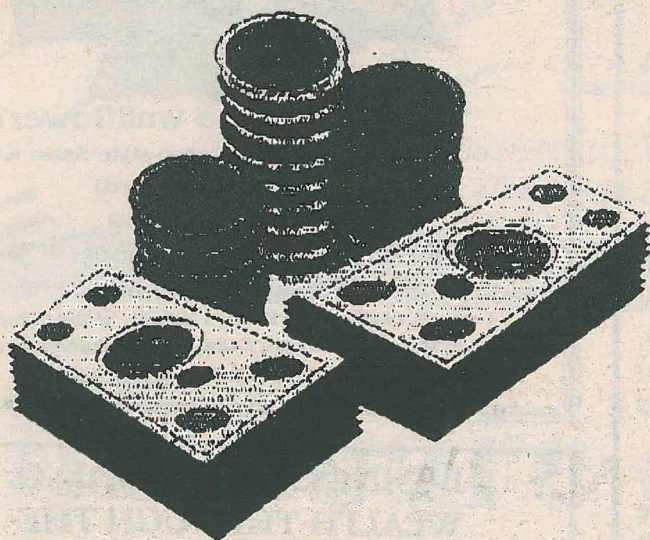
We are your
communication link to the
latest NSU News and
Events, as well
as the newest music.



If you are interested in becoming involved in the **NEWSPAPER**, contact them at 262-8455; OR in the **RADIO STATION**, contact them at 262-8457.

S.C.O. is always looking for writers and disc jockeys.

What are you waiting for? Get Involved and make a difference!



Need a little extra cash?



Become a Plasma Donor!

Plasma comes from caring people like you and it helps hundreds of thousands of people each year. Donate plasma and earn up to **\$180.00** this month while helping others.



Nabi BioMedical Center

2301 N. University Dr.

Pembroke Pines, Florida 33024

Call today for an appointment:

(954) 987-6240

Resolutions Lost?

by Althea Mease
Contributing Writer

With all the hype about the New Millennium, it seems that a lot of people forgot that it is a new year, as well. It is definitely more exciting to think about all the things that could be different in the next thousand years, such as medicine, computers, and society in general. But what about you? Couldn't you use some changes, since it is a new year, and a new beginning. Making a resolution is important, even if you don't keep it. We all need hope that our lives can change for the better.

Maybe you didn't forget. Maybe you have simply lost the hope. You know you won't keep the resolution throughout the year, so why make one? Because it helps to think seriously about what aspects of your life you aren't happy with. It may be easiest

to push your faults to the back of your mind, but that is not the healthiest thing to do.

Then again, maybe you did make a resolution. It is probably something relatively easy to accomplish. Or, something that everyone tries to do, but no one succeeds at, so you don't need to worry if you can't succeed at it, either. You want to lose twenty pounds by next year. So do most people. But most people can't, so it's okay for you to fail.

Challenge yourself. Life never gets better unless you do. Stand up for what you believe in. Take risks for what you know is right. Don't count on always taking the easy way out of situations, because that doesn't help us grow as human beings.

"The secret of the greatest fruitfulness and the greatest enjoyment of life is to live dangerously."-Nietzsche.

THE SPATS by JEFF PICKERING



Tired of being a wallflower?

Come learn to dance Casino-style Salsa with

the best in Broward!

Monday 7:30-9:30

The Old Davie School

6650 Griffin Road

1 mile E. of University Drive, 1 mile W. of the Turnpike

www.absolutesalsa.com / director@absolutesalsa.com

954-382-0760 for more info.

Student
discount
available

**BUSINESS IS EXPLODING
WEALTH THROUGH THE
INTERNET**

**EARN A FREE CAR AND A HOUSE
PAYMENT**

www.NFLI.NET/2051

**Lookin' For Love?
Need a Date?**
*Put a Personal Ad in the
Love Lines*

Appearing in The Knight February 16th.

Send your Valentine a Message . . .

Love Lines!

Coming February 16th

Submit your message to us by Feb. 9th via
e-mail to theknight@list.nova.edu or
drop it off at our offices located in the
Academic Support Center Modular
(near the Wellness Center).

The Knight Staff and Policy

Editor-in-Chief

Alyson M. Dion

Associate Editor

Michael Citron

Layout Designer

Piper Griff

Staff Writers

Angel Ali

Deana Daneau

Peter Salerno

Kyle Washburn

Chief Photographer

Victor Garcia

Advisor

Professor Caroline Geertz

Business Manager

Rocia de Ojeda

Associate Business Manager

Jessica Rivera

Business Department Advisor

Professor James Dean

Web Designer

Matt Nguyen

The Knight serves Nova Southeastern University's Farquhar Center for Undergraduate Studies from its office on the third floor of the Parker Building on NSU's main campus.

The Knight is NSU's established vehicle for the transmission of student reporting, opinion, and arts. All community members are invited to contribute anything they desire to The Knight.

The Knight is readily available at several sites around the campus and the local community, including the East Campus site, the Oceanographic Center in Dania, and the Davie-Cooper City Chamber of Commerce.

Address all distribution concerns to Mike Citron, Associate Editor, at (954) 262-8455.

The deadline for submissions for Volume 10, Issue 9, is 24 January 2000. The advertising deadline is 26 January 2000.

Disclaimer: Editorials, commentaries, and advertisements expressed in this publication do not represent the views of the University or its officials. The Knight staff or other advertisers, Editorials, commentaries, and advertisements reflect only the opinion of authors. The Knight will not publish unsigned letters except in special circumstances, at the editors' discretion. The Knight reserves the right to edit letters for clarity, brevity, and accuracy.