

1-21-1998

The Knight Volume 8: Issue 8

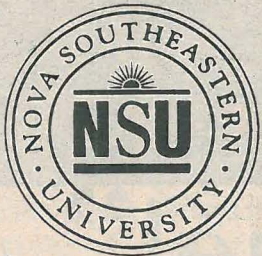
Nova Southeastern University

Follow this and additional works at: https://nsuworks.nova.edu/nsudigital_newspaper

NSUWorks Citation

Nova Southeastern University, "The Knight Volume 8: Issue 8" (1998). *The Current*. 160.
https://nsuworks.nova.edu/nsudigital_newspaper/160

This Newspaper is brought to you for free and open access by the NSU Digital Collections at NSUWorks. It has been accepted for inclusion in The Current by an authorized administrator of NSUWorks. For more information, please contact nsuworks@nova.edu.

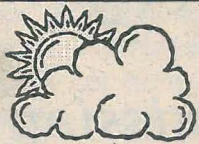


The Knight

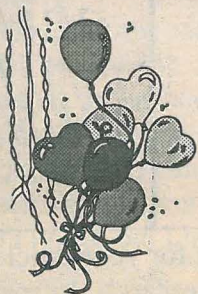


THE OFFICIAL STUDENT NEWSPAPER OF NSU's
FARQUHAR CENTER FOR UNDERGRADUATE STUDIES

Volume 8 Issue 08
21 January 1998



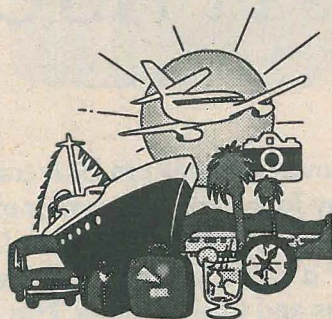
In This Issue



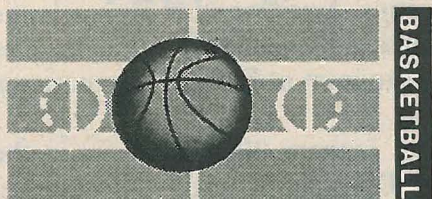
Campus Life...2



Greek Update...3



Places to Go...5



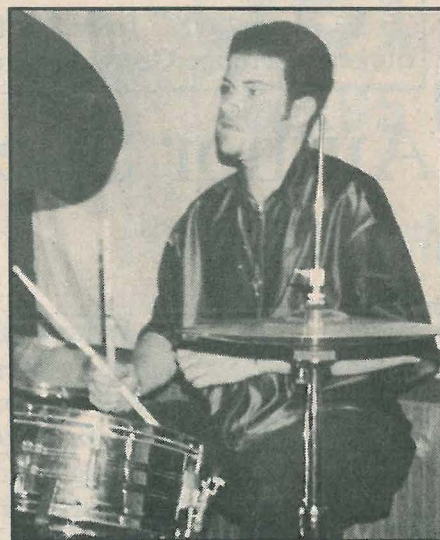
Sports...6

WNSU Forget The Finals Extravaganza

by Angel Sanchez
Associate Editor

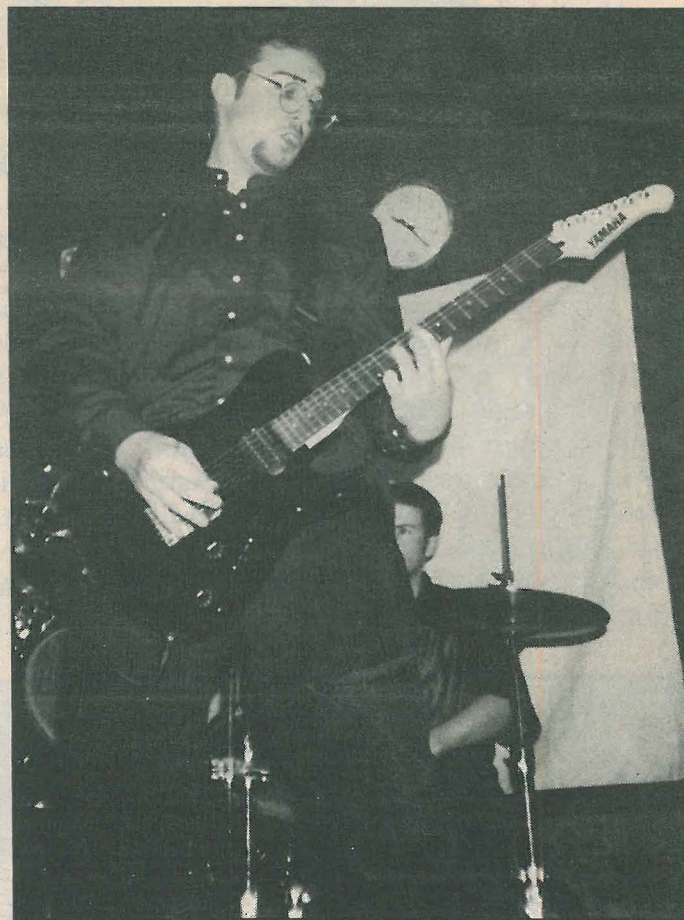
On December 6th, 1997, WNSU, Nova's radio station, held a concert featuring local bands. Simple Distillation, Drone, and Cousin Bluebone were great. What made this concert interesting was that each band had its own type of music to play. Thus, Simple Distillation played music from the Greatful Dead, Drone played heavy metal industrial, and Cousin Bluebone played alternative

There was a great turn out; over 100 people showed up. Everyone had a great time and enjoyed the music. Being that this was Drone's first performance, they had a lot of people cheering for them. The audience yelled and screamed when they were singing. The group

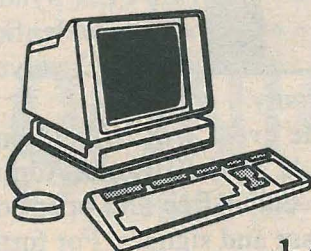


members are Tim Stone - lead guitar, a NSU student and production engineer for WNSU, Matthew Moore - bass and vocals, Joseph Swift - vocals and guitar, and Adam McCard - drums. Tim said the following "Everybody in the band played extremely well, and I think the audience was really impressed by our performance." Drone will be performing at the Kitchen Club in North Miami sometime this month and will record an album in February.

Cousin Bluebone played at the Citylink Music Festival the following weekend. Reece Robertson and Peter Cromwell, the Flight Deck crew said "WNSU delivered a 1st class event and served a big dish of funky delight." WNSU staff did a wonderful job in putting on the concert; the light and smoke machine transformed the Flight Deck into a nightclub which made it a more pleasant atmosphere. Angelique



Nixon, Program Director of WNSU, said "Everyone at WNSU worked really hard to put this event together, and we are delighted that it was a huge success...All of the bands were happy to support WNSU, and they had a great time performing." Special thanks go to Keith Dechristina for providing the stage on short notice



The Poll Page

How safe do you feel on campus?



<http://www.nova.edu/cwis/knight/pollpage.html>



Campus Life



Labor Day Party "The Sequel"

by Campus Life Editor
Andrea Solheim

Student Life started the year off with a bang with Labor Day Party "The Sequel." Student Life wanted to recreate the excitement of coming back to school in the Fall in the winter semester.

Stephanie Castonguay stated, "We wanted to set the tones for the whole semester: bringing support, fun, and unity among the campus." She followed with,

"We wanted to teach the students that *this can be done!* Hopefully, this party will start a chain reaction and clubs, organizations, Greeks, and all students will organize event such as this."

They were very satisfied with the original Labor Day Party, so Frank Majnerich, Shannon Cain, Sandy Longo, Paul "Remi" Wisniewski, Mari Chamberlin, and Stephanie Castonguay, all joined to have a major brainstorming night. Their goal was to have something different, a lot of fun, and to inspire the students once again. They finally came up with the Winter Scene for "The Sequel." Some of the activities included an ice sculpting competition, a snow pile to slide down on with inner-tubes, music, raffles for money, gift certificates, and more in the *Blizzard of Bucks*, and of course food and drinks. Students, staff, and even children had a fun-filled day at "The Sequel."



How to Write for The Knight

-or-

The Seven Steps of Submission

Copy Deadline	Ad Deadline	Street Date
1/7/98	1/7/98	1/14/98
1/28/98	2/4/98	2/11/98
2/11/98	2/18/98	2/25/98
2/25/98	3/11/98	3/18/98
3/18/98	3/25/98	4/1/98
4/1/98	4/8/98	4/15/98
4/15/98	4/22/98	T.B.A

How to Write for The Knight

1. Ask yourself: "Do I know what I want to write about?" If the answer is yes, skip to #3. If no, read on.

2. Stop by The Knight office (Parker 332), Call (262-8455), or email burgessn@polaris.acast.nova.edu to get an idea or assignment of an article from Nathan Burgess, Editor in Chief.

3. Get the "OK" from Nathan Burgess, Caroline Geertz, or Angel

Sanchez for your article idea.

4. Research, Interview, and/or think about the article.

5. Write the article. Don't worry about exact grammar, or journalistic style beyond what you already know.

6. Get the article to Nathan Burgess on disk, email, fax, or plain paper.

7. Wait for feedback and revel in the glow of being a "Contributing Writer."

Author Speaks at NSU

by Dr. Suzanne Ferris
Liberal Arts

The Writers' Bloc of Nova Southeastern University is sponsoring a presentation by John Dufresne, author of *The Way that Water Enters Stone*, *Louisiana Power & Light*, and *Love Warps the Mind a Little*, as part of its series, "The Writing Life: Passions and Compulsions."

John Dufresne received an M.F.A. from the University of Arkansas. He has won a number of writing honors, including the "Yankee" Magazine Award for Fiction, the PEN Syndicated Fiction Award, and a Transatlantic Review/Henfield Foundation Fiction Award. He teaches in the Creative Writing Program at Florida International

University.

The event will be held on Thursday, January 29 at 5:00 pm in the Rotunda of the Horvitz Administration Building on the NSU campus. The event is free and open to the public. Books will be available for purchase and signing. For further information, please call 262-8699.





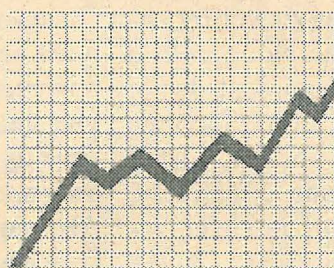
Campus Life



Greek Grades Good

by Andrea Solheim
Campus Life Editor

Greek Life is growing and making their names known all over campus through many different activities and prospering scholastically. Being Greek is not easy. There are many standards a member must uphold to be active in the sororities or fraternities. A new member's G.P.A., for one, is very important. Sororities and Fraternities do as much as they can to reinforce the importance of grades. One thing they have is study hours, which is the minimum study hours and member may have per week. The second thing is "study buddies," which is set up by the scholarship chair in the organization. This is a program that involves a "need help" and a "can help" list, which pairs members of those who need help in a certain subject with those who can help in the certain subject. To be active in all organizations, all members must have at least a 2.0 G.P.A. To be on an executive board, the members must have a 2.5 and higher. This all leads up to why it is not only fun to be Greek, but it is an honor. It keeps you focused towards your college career and helps you become more well-rounded.



Grade Reports for Greek Organizations- Fall 1997

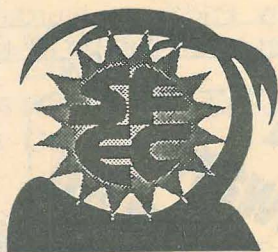
	<u>Overall</u>	<u>Active</u>	<u>New Member</u>
Beta Theta Pi	2.78	2.69	2.95
Sigma Alpha Mu	2.88	2.68	3.08
Theta Delta Chi	2.39	2.18	2.60
Phi Sigma Sigma	2.68	2.56	2.84
Delta Phi Epsilon	3.16	2.97	3.36

To follow up on the scholastic side of the Greek System, congratulations goes out to Louis Gittens, Adam Benson, and Brett Shane, who are a new members of the Order of Omega, Pi Rho Chapter. This is a National Greek Leader Society, to become a member you must have a cumulative of 3.0 and at least 60 credits, and you have to be a leader not only in your chapter, but in Interfraternal Council or National Panhellenic Council.

Next, Congratulations goes out to the new Interfraternal Council and Panhellenic Council

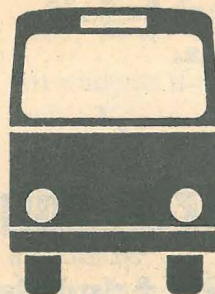
see GREEK on page 7

FREE SHUTTLE BUS SERVICE



During weekday mornings and afternoons, the **FREE SFEC/Tri- Rail Express Bus** runs every 30 minutes between the South Florida Education Center campus in Davie and the Fort Lauderdale Tri-Rail station located at Broward Boulevard and I-95.

During midday, the **FREE Downtown Davie Lunchtime Circulator** runs every 20 minutes between the campus and downtown Davie, providing access to local restaurants and other business establishments.



For more information call the
South Florida Education Center Transportation Management Association
at (954) 370-8307

January Events

by Andrea Solheim
Campus Life Editor

Nova Southeastern University is kicking off the year with event after event. Check it all out and get involved!

January

12th at 7:45 p.m. **Swingers** will be showing at the Flight Deck movie theater.

13th at 8:30 p.m. **Swingers** will be showing again at the Flight Deck movie theater.

13th at 7:30 p.m. Order of Omega installation, private ceremony.

15th at 11:00 a.m. to 2:00 p.m. Campus Volunteer Fair at Parker,

featuring over 30 community agencies, refreshments, prizes, and fun.

15th at 7:30 p.m. Paint Your Own Letters Party, for Greek Organizations, in the Flight Deck. (B.Y.O.B. -- Bring your own brush.)

19th at 8:15 a.m. in the Goodwin Residence Hall to meet for Martin Luther King, Jr. Day of Service, for the Habitat for Humanity. Contact Madeline at 8093

19th at 7:45 p.m. **Con Air** will be showing in the Flight Deck movie theater

20th at 8:30 p.m. **Con Air** will have its second showing in the Flight Deck movie theater.

26th at 7:45 p.m. **Men in Black** will be showing in the Flight Deck movie theater.

27th at 8:30 p.m. **Men in Black** will have its second showing in the Flight Deck movie theater.

21st through the 31st will be Informal Rush for all Fraternities and Sororities. Meetings for each will be posted for further notice.



How To Survive The Interviewing Process

by Jacqueline Parsons
Contributing Writer

A person choosing a career faces the grueling task of the process of interviewing. As such, one should be sure that they avoid the many disappointments that can occur if not adequately prepared for the questions presented during the interview, face-to-face process by which you expand on the information in your resume. During the interview, the interviewer has an opportunity to provide you with details about the position and determine if your qualifications fit the job requirements. Following these steps will give you more of an opportunity to ensure that you will be considered for the position over the average applicant.

First, you must analyze your skills, both for your strengths and academic experience, as well as your interests in the position you are seeking. Prepare a list of your strongest abilities along with an example of how you have demonstrated each of them at your prior employment.

Secondly, research the prospective employer by finding out the company's services, longevity and future prospects. You can do so by surfing the Internet to determine if that company has a website, conducting research at your local library, and reading the business section in the newspaper. In doing your research, you will be able to impress the interviewer with intelligent questions along with your knowledge of the company's organization.

Next, you should also research the specific position available and be prepared to discuss with the interviewer your qualifications. Most employers usually list the qualifications in the job posting and/or advertisement. Additionally, prepare questions you would like to ask the interviewer in advance and you will come across as being intelligent, confident and conscientious.

Now, once you have prepared and done your research, you are ready for the interview. With a copy of your resume in hand and the questions for the interviewer, you are on your way. In order to present

yourself at the interview, you must also follow these important steps. You must wear the appropriate attire to fit the position for which you are applying. If you are unsure, dress professional. Next, make sure that you obtain in advance the exact time and location of the interview. Plan to arrive at least five to ten minutes early especially if you are unfamiliar with the area so that you have a few minutes to recheck your appearance and to relax a little.

During the interview, it is important to greet the interviewer by announcing your name along with a firm handshake. Be confident, do not chew gum or smoke, sit comfortably, and maintain good posture. Listen and answer questions effectively, concentrate on your positive attributes, and do not use slang. At the end of the interview, ask the interviewer if he/she will get in touch with you. If so, when? Then thank the interviewer and ask for his/her

business card.

After that, be sure you send a thank you letter to the person who interviewed you. In your thank you letter, emphasize your interest in the position. Additionally, if you do not get a response after the date in which the interviewer indicated, you can telephone him or her to inquire if the position has been filled.

Finally, you must never accept a position until you have obtained a clear explanation as to what your responsibilities are going to be. Once you have accepted the job, you must never renege on that offer. If, however, you must decline an offer, you must be as diplomatic as possible as you may want to leave the door open for future job possibilities. Also, in declining an offer, express your appreciation to the interviewer. If you follow the steps outlined above, you should have no problems in landing the position for which you have interviewed.

Check It Out!!!

WebWalkUp

**Online registration and
resume software.**

**24 hour access to job
listings.**

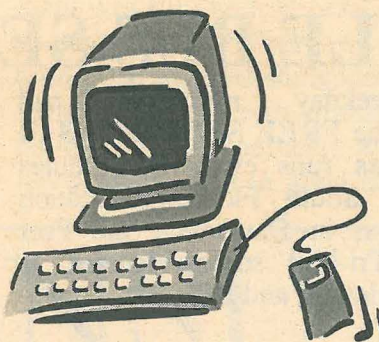
Register now!

Career Resource Center

Horvitz Administration Bldg.

1st floor

(954) 262-7201



**Geronimo's
Sidelines**

Bar and Grill

Serving Lunch 11:30-5pm

Dinner 5-10pm M-Th/Fri&Sat-11pm

3528 South University Drive, Davie
Located 1 mile South of I-595
behind Pier 1 Imports
in the University Park Plaza
(954) 474-9998

**Lobster Special
\$8.99**

**Complete Late
Night Menu till 4am**
Show your NSU ID and get
great drink specials

In the Biz Mondays

25% off with Check Stub

2 For Tuesday

2-4-1 Drafts, \$2 Kami & Hooter
Shots

**Wednesdays Ladies
Night**

Ladies Drink Free All Night

Retro Disco Thursdays

"Baby"

\$.75 Short, \$1.50 Tall Domestic
Drafts \$2 Kamikazes and Purple

Hooters All Night

Friday & Saturday Night

Live Music and DJ

Dance Mixes

Sunday is Reggae

Mon--Caribbean Blue

\$2.50 Red Stripe, Heineken &
Rum Drinks!!! IRE IRE MON!

Thursday, Friday, & Saturday

nights start at 11p and go till 4am

**West
Broward
College HQ**

Guys-21+
Girls-18+
I.D. Req'd



Dance, Dine & Party Dance, Dine & Party Dance, Dine & Party Dance, Dine & Party

Arts & Entertainment

Quiet Waters: A Cool Place To Go

by Aneesh Lakhani
Contributing Writer

In South Florida there are lots of places to go if you want to get away from all that. You want to go to a place where you can relax and have a good time. I think I have found a place that offers this to you. It is Quiet Waters Park.

Quiet Waters Park is a place where you can expect to have a relaxing visit, expect to see beautiful scenery, and know you'll have a good time.

If you are looking to get away from the stresses of the real world, Quiet Waters Park is the place to go. The park has plenty of trails with benches alongside. You can sit out and have a picnic in the wilderness or even catch up on a book. Whatever you choose to do, you can rest assured that it will be in peace and quiet. Quiet Waters also offers camping sites and prebuilt tents for your convenience. If your idea of relaxation is to sit out on a boat and fish, you can do that as well. You can even go out for a swim at the park's manmade beach.

The scenery at Quiet Waters park is absolutely beautiful. The park has a huge lake and plenty of trees. When you go on trails you can expect the landscaping to be kept up, and the park to be extremely clean. The park has a lot of exotic birds as

well such as peacocks, humming birds, and even some cardinals. The park also has bike paths that have breath taking views. One bike path takes you up a hill and gives you an aerial view of the entire park. Also at the top of the hill are picnic benches where you can have lunch and see the entire park.

I would recommend this place to anyone who is looking for an adventure and a good time.

When you go to Quiet Waters you can expect to have a great time. The park has everything for family fun, it has a miniature golf course, a

water-ski reel, and playgrounds all around the park for the kids. Where else can you go and experience all this? Quiet Water is the place to go for outdoor fun in the sun.

It is rare that you find a place that you can go to, and experience all these activities. Quiet Waters park is South Florida's hidden spot, not too many people know about all that it offers. I would recommend this place

to anyone who is looking for an adventure and a good time. Remember if you go to Quiet Waters Park you can expect to have a relaxing time, see some awesome sights, and have a lot of fun.

If you are looking to get away from the stresses of the real world, Quiet Waters Park is the place to go.

Whatever you choose to do, you can rest assured that it will be in peace and quite.

Quiet Waters Park is located at 6601 North Powerline Road in Deerfield Beach and can be reached by phone at 360-1315.

Stepping to the Hot Beats in Theater Style

by Salina Vavia
Contributing Writer

Imagine nonstop music whirling around you as the bass is thumping through your entire body. The tunes are constantly being mixed so that when a good song ends, another good collection is on its way. This utopia does exist and goes by the name The Theater.

Not only is this a great dance club, but it is also a great place to hang out for those anti-dancing people. As far as size is concerned, The Theater has no problem giving people enough space to boogie down to the jams. The Theater features three separate rooms, a nineteen-foot video wall, ten giant screens, four satellite dishes, and luxury skyboxes. For relaxation or for those people who like to observe, The Theater has created a special section on the side of the main dance floor. The Premier Lounge provides a spot of overstuffed antique love seats and chairs for your resting pleasure.

Featuring the same music as the main room, the Premier Lounge has batch bourbons, wines, champagnes and premium cigars available. A light appetizer menu is also available. Upstairs in the Prop Room, some of the hottest disc jockeys spin the newest underground and progressive music. In addition, The Theater has the largest laser and light show in South Florida.

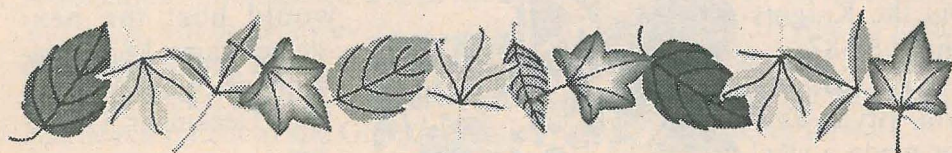
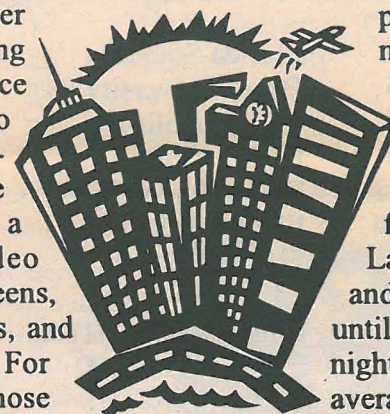
I experienced The Theater a few weeks ago. DJ Johnny Quest mixed all music preferences. Just a few of the styles of music played include house, reggae, brickbat, jungle, freestyle, hip-hop, trip hop, disco, old school, and modern rock. The music ranges from "Feels So Good,"

by Mace, to "Around the World," by Daft Punk. For techno listeners, songs like "Boom Boom Boom," by the Outhere Brothers are played. Reggae lovers will enjoy songs like "Murder She Wrote," by Shacka Diemus. DJ Johnny Quest even managed to throw in some old school favorites like "I Got a Man" by Positive K. The variety of music gave all club goers a thrill of constant heart-beating action.

Club goers are as varied as today's dance music. The crowd at The Theater is a good blend of people. On certain nights you can find a more specific type of crowd. Wednesday nights are Ladies Night, and you will find more women there. Ladies drink free all night and gentlemen drink free until 11 p.m. On the other nights, drinks are priced at average club cost: \$3.00 and up. On Thursday nights, Col-

lege Night, attracts more college students from the local universities. Cover charge is generally \$10. However, if you reach the club before 11 p.m. on Thursday nights, you get in free. Friday and Saturday nights have featured disc jockeys spinning the hottest music in South Florida. Sundays are huge at The Theater. Gentlemen's Day at noon; you can watch your favorite NFL team on one of the big screen televisions. Another Ladies Night on Sundays at 8 p.m. Free buffet and drink specials all night. Monday night football is big at The Theater. The original "Ring Boxing" girl competition is also on Mondays. On Tuesdays, there are Disc Jockeys spinning beats together.

Overall, The Theater is a classy club that knows how to host a good party. I asked two Nova Southeast-



Sports

1998 Men's Baseball Spring Schedule

Day	Date	Team	Time
January			
Tuesday	13	NSU Softball (Home)	7:00pm
Saturday	17	Alumni Game (H)	1:00pm
Saturday	24	Conference All Star Game	1:00pm
Tuesday	27	BCC (Exhibition) (H)	3:00pm
Wednesday	28	BCC (Exhibition)	3:00pm
Saturday	31	F.I.T.	1:00pm
February			
Sunday	1	Florida Southern	1:00pm
Thursday	5	Barry University (H)	2:45pm
Saturday	7	St. Leo College	7:00pm
Sunday	8	Rollins College	1:00pm
Wednesday	11	Barry University	2:30pm
Saturday	14	Flagler College	12:00pm
Sunday	15	Flagler College	1:00pm
Tuesday	17	F.I.T. (H)	2:45pm
Saturday	21	Embry Riddle (H)	12:00pm
Sunday	22	Embry Riddle (H)	1:00pm
Tuesday	24	Trinity Univ. (H)	2:24pm
Friday	27	Webber College (H)	2:45pm
Saturday	28	Webber College (H)	12:00pm
March			
Monday	2	Concordia (H)	2:45pm
Wednesday	4	University of Tampa	7:00pm
Thursday	5	University of Tampa	7:00pm
Saturday	7	Eckerd College	7:00pm
Sunday	8	Eckerd College	1:00pm
Tuesday	10	Homestead	TBA
Wednesday	11	Homestead	TBA
Friday	13	St. Thomas Univ. (H)	2:45pm
Saturday	14	St. Thomas Univ. (H)	12:00pm
Tuesday	17	Ft. Myers	3:15pm
Thursday	19	Ramapo College (H)	2:45pm
Friday	20	Dominican College (H)	2:45pm
Saturday	21	Ft. Myers	2:00pm
Sunday	22	Ft. Myers	12:00pm
Tuesday	24	Baker University (H)	2:45pm
Wednesday	25	Trinity Univ. (H)	2:45pm
Friday	27	PBA	4:00pm
Saturday	28	PBA	12:00pm
Tuesday	31	Spring Arbor (H)	2:45pm

see SPORTS on next page

Two Million College Students Can't Be Wrong...

Schick Super Hoops Returns To Nova Southeastern University

by Press Release

During the past decade, more than two million college students have gone to the hoop in **Schick Super Hoops**. The largest 3-on-3 basketball tournament in the world returns to Nova Southeastern University on January 31 at 10:30am at the RecPlex.

Schick Super Hoops, the Official Collegiate 3-on-3 Basketball Tournament of the NBA, charges into it's 14th consecutive season offering more than 550 participating schools a competitive tournament, cool prizes and the chance to compete against other school champions. As a special bonus, all campus champions will be posted on a special Schick Super Hoops section on the company's web site at www.schick.com.

Both men's and women's divisions will compete at 550 colleges and universities nationwide drawing nearly 200,000 participants. The men's and women's winner at each campus tournament will advance to one of 16 **Schick Super Hoops Regional Tournaments** to compete for regional supremacy in an all-day tourney against up to 50 other area schools.

Since 1984, **Schick Super Hoops** has provided more than two million students the chance to compete in an intramural 3-on-3 basketball tournament that breaks through school walls. Schick is the Official Razors and Blades of the NBA and sponsors the Schick

see HOOPS on next page

Robinson Returns in Full Swing

by Kristen Phass
Sports Editor

Monday, December 29, brought center, Robert Robinson, back to the court following an injury to his left knee about 3 weeks prior.

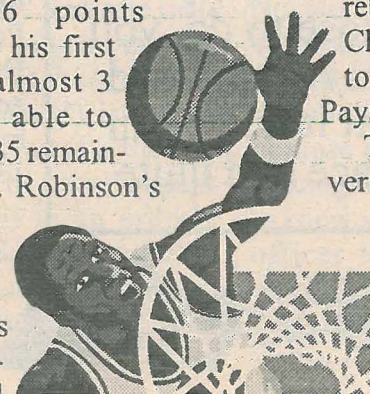
With 17:22 remaining in the game, the Knights had a 22 point deficit to work on against the University of Mary Hardin-Baylor (TX). Amazingly enough, 16 of Robinson's 26 points throughout this, his first appearance in almost 3 weeks, he was able to achieve with 17:35 remaining in the game. Robinson's 16 points would put the Knights ahead 88-87.

To seal this win, Bryan Taylor made a steal

from John Osborn of the University of Mary Hardin-Baylor. Following the steal, Jeff Payanis followed up with a free throw which guaranteed the game.

In addition to Robinson's 26 points, he was 7-of-12 from the field, 12-of-15 from the free throw line, and added 11 rebounds, 1 block, and 1 steal to his record. Not bad for the first day back!! Sherard Hernandez was not far behind with 24 points, 5 rebounds, 3 assists, and 1 steal. Chad Bobik added 11 points to the scoreboard, and Jeff Payanis accumulated 6 assists.

The Nova Southeastern University Knights improved their record to 7-7 overall, and would host the next game against McMaster University on Wednesday, December 31 at 3 pm.



Is it Possible to Survive Hell?

by Salina Vavia,
Contributing Writer

Go back to when you were sixteen years old. You might remember chasing your new love, gossiping with friends, and sharing good times with your family. Suddenly your life comes to an abrupt halt. You are a Jew during one of the most heinous events recorded in world history: the Holocaust. Life as you know it will never be the same again.

Regina was the survivor that I could talk to at NSU's Student Awareness Day of the Holocaust. She was elected to tell us her story of survival in hopes of educating the younger generation of prejudice and how powerful it is.

Regina, a Holocaust survivor, was sixteen when she entered a concentration camp in Poland dur-

ing the Second World War. Defined by the Holocaust Documentation and Education Center, Inc., "The Holocaust was the systematic, bureaucratic annihilation of six million Jews by the Nazi regime and their collaborators as a central act of state during World War II." The Nazi Party, also known as the National Socialist German Workers Party, led by Adolf Hitler, created an atmosphere of pure hatred toward Jews and other deemed "anti-social" by blaming Germany's problems on these innocent people. Some Germans were convinced by Hitler's powerful speeches and Nazi propaganda that they were the superior race. The Nazis were responsible for the Holocaust.

Regina Practices the Jewish faith. At the young age of sixteen, she was forced to work in six con-

see HOLOCAUST on page 8

Greek Time

from page 3

Executive Board Officers.

Panhellenic Association.

President: Alison Barker
VP/ Recruitment: Justine Steiner
Secretary: Dana Schulman
Treasurer: Jennifer Lenz

Interfraternity Council
President: Steven Curran
VP/ Recruitment: Rich Bartho
Secretary: Brad Fatout
Treasurer: Daniel Leeds



Every officer will attend an officer transition retreat, to learn about their positions, and brainstorm new ideas to better the Greek System as a whole.

The next order of events for Greek affairs is "Paint Your Letters Party." This is a night organized by Ruth Bosch and Lori Psencik for the benefit of all Greek Organizations. They had the Physical Plant build wood letters for the organizations to paint with their colors. This is just the beginning of how the Greeks are going to display their Greekness on campus.

The final event of the month is Informal Rush. This Rush is called informal because there are very few "set" plans by the IFC and Panhellenic Association. Informal Rush lasts the 21st through the 31st. Definite dates and times will be set by every organization individually. If you are interested in Rushing, contact the Greek Life office in the Rosenthal Building.

Jori Psencik states, "The Greek Affairs office is dedicated to the growth and development of the Greek community. We are looking forward to a successful and productive semester."

Hoops Tournament

from page 6

Rookie Game during NBA All-Star Weekend as well as the Schick Rookie of the Year Award. This year, NBA rookie phenomenon Tim Duncan of the San Antonio Spurs is serving as spokesman for the Schick Rookie Game and Schick Super Hoops, a post previously held by the likes of Ray Allen, Jerry Stackhouse, and Grant Hill.

Please contact Shannon Cain at 262-7301 for more information about the Schick Super Hoops on-campus tournament.

from page 6

April

Wednesday	1	Florida Southern (H)	2:45pm
Friday	3	Florida Memorial	2:45pm
Saturday	4	Florida Memorial	12:00pm
Wednesday	8	Lynn University	3:00pm
Friday	10	Warner Southern (H)	3:00pm
Saturday	11	Warner Southern (H)	12:00pm
Tuesday	14	Lynn University (H)	3:00pm
Friday	17	Trinity University (H)	3:00pm
Tuesday	21	Lynn University	3:00pm
Friday	24	Northwood Univ.	3:00pm
Saturday	25	Northwood Univ.	12:00pm

"Make a career of humanity...and you will make a greater person of yourself, a greater nation of your country, and a finer world to live in."



MARTIN LUTHER KING, JR. DAY OF SERVICE

A Day On, Not a Day Off

Monday, January 19, 1998

Join us as we honor his memory by serving at Habitat for Humanity. Vans leave from Goodwin Residence Hall at 8:15 a.m. Contact Madeline at x8093 or Ruth at x7290.

Building Sites are located in Ft. Lauderdale and Hollywood.
Maps will be available by January 15, 1998.

Come by the Volunteer Fair on January 15 at the Parker Building for more information.

Sponsored by SCORE (x8093) and Student Life (x7290).

Holocaust Hell

from page 7

centration camps over her five years of barely living through the Holocaust. I already assumed that pain and suffering took place in her world, but she reminded me of the absence of simple pleasures that

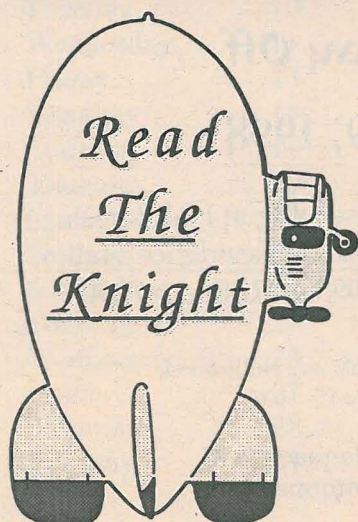
Such pleasures as bathing alone, wearing clothes, and having hair were missing in her life.

drove into her fear, distrust, and suspicion. Such pleasures as bathing alone, wearing clothes, and having hair were missing in her life. Twice Regina was forced to have her head shaven for no other reason than the Nazis ordered it.

She recalled several situations that made me think long and hard. Yet to my amazement, she cannot remember a single account of rape because of the Nazi's belief that no superior race may mix with an inferior race. It is forbidden!

Without getting too personal, Regina and I shared time listening to each other's stories. She has inspired me. Now whenever I need to go on, I think of how she managed to live through hell and come back.

I embraced her message of peace and tolerance. I may not have learned something of my past, but I am able to use this experience in my life.



Intramural Sports at NSU

by Ryan Hesson
Contributing Writer

Do you ever get that odd feeling when you are done studying and you have nothing to do? You know, boredom? Many students are unaware of all the intramural sports that Nova Southeastern has to offer. Such as volleyball, flag football, basketball, soccer, and softball. More students should get involved in intramural sports because they are fun, competitive, and relieve stress.

The reason most students play intramural sports is because they are fun. Students get their teams together, full of all their friends, to play in the games. There are teams made up of undergraduate, law, dental, and even medical students. Every mas-

ters program that NSU has to offer comes up with a team in every intramural sport. This diversity allows students the chance to meet new people and have fun playing at the same time. Since Nova isn't that big of a school, intramural sports help everyone get together and socialize.

The games are very competitive and challenging to the players. The sports are run by paid officials. If a player's temper gets too riled, the official can penalize the team or even eject the player. The teams play a certain amount of games followed by the playoffs. Each team strives to make the playoffs knowing that not every team can make the prestigious playoffs to win the championships. The champions get their pictures taken to be displayed in the cafete-

ria for well deserved bragging rights.

Intramural sports will provide students with exercise. And exercise relieves stress. Exercise can help during those stressful final exams. Playing sports with your friends will get your mind off of school for a while, and give your brain a chance to rest. After playing sports, fatigue sets in, so you can get a good night's sleep. These elements are necessary when studying for important tests.

NSU would like to see more students get involved in intramural sports because they are fun, competitive, and relieve stress. This year we would like to see the biggest turnout ever. So if you want to sign up, don't hesitate. Sign up sheets are at the RecPlex. We will see you out at the fields.

Novalert: Just Traffic Police?

by Alex Nunaihed
Contributing Writer

Not long ago, two cars and a dorm room on the first floor of Goodwin Hall, were broken into. Where was Novalert? Putting warning stickers on parked cars in some other lot? This is a matter of major concern. It's about our safety, no less. Are people from Novalert doing their job of protecting us residents? The opinion of many is that they are not doing an effective job.

One thing Novalert is "effective" at is chasing "speeders." "Student X" one day is driving inside campus and runs into a Novalert Vehicle that's doing around ten miles an hour — for whatever reason he had. So "Student X," who is late for class, passes the Novalert vehicle at around thirty miles an hour. This unleashed the officer's wrath, and he decides to chase — Starsky and Hutch style — "Student X" all around campus until "Student X" parks. The officer descends from his vehicle and asks "Stu-

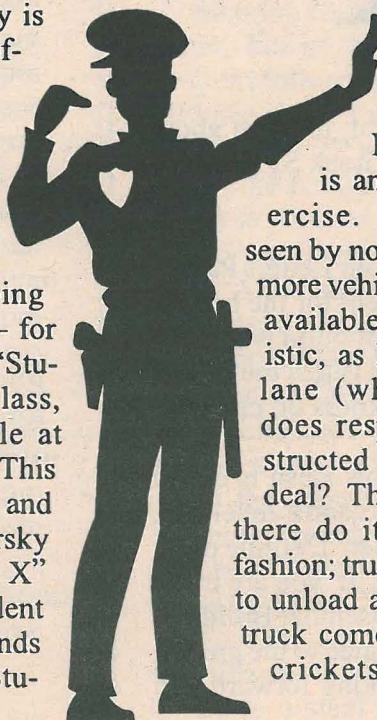
dent X" for his ID. "Student X" tells the officer that he has no time for bull and walks away. Thus the officer — with an inadequate tone of voice — threatens to let higher authorities know about the incident. Good job! Now, would they be bold enough to do so with a real criminal at night? We haven't seen such a thing yet.

Novalert also spends a lot of time putting warning stickers on wrong-

fully parked cars, especially in the dumpster area of the Parker Building. This is an every day exercise. Haven't they seen by now that there are more vehicles than spaces available? Let's be realistic, as long as the fire lane (which everyone does respect) isn't obstructed what's the big deal? The cars that park there do it in an orderly fashion; trucks are still able to unload and the garbage truck comes when on the crickets are chirping.

It's a waste of time, and by the way, how much money do those stickers cost the school? We don't see much effectiveness here either.

In addition, there is one thing about Novalert that really angered "Student Y." Another student. One sunny day, "Student Y" parks his car at the Rosenthal Building to have his lunch. When he gets back to his car, he finds that his car antenna is broken in half and his mirror as well. There were also a few scratches with traces of green taint. Leaves and trimmed branches were all in a pile in the median next to the car. Obviously someone was pruning the trees and the person fell on the car. No one was there to take responsibility for what had happened. What cowards! So "Student Y" calls Novalert. Novalert shows up and takes pictures of the damages on the car. "Student Y" asks the officer for the number to contact the landscaping people because obviously he has a couple of things to say to them, and he wants to know who to send the bill to. The officer tells "Student Y" not to worry; Novalert will take care of everything and call him within two weeks tops. That was a little over



see NOVALERT on next page

Novalert: More Than Meets the Eye

by Nathan Burgess
Editor in Chief

The accompanying editorial intrigued me for many reasons. Primarily I was intrigued by Mr. Nunaihed's attitude towards Novalert. Perhaps the most interesting part of the entire article is that many people would say much of the same about "real" police: They are never there when you NEED them, but they always manage to harass you about your driving, yet no one has come up with a better solution. There are, however, other problems with the reasoning presented.

The first 'problem' Mr. Nunaihed raises is that Novalert wasn't there for 2 car break-ins and a dorm room break in. I would much prefer any security force be more concerned about the prevention of crimes than those that have already occurred. On several occasions Novalert has chased away prowlers. I'd prefer Novalert to be inquiring of a non-student why they are wandering around the residence halls than looking for broken glass next

to parked cars. The owner of the car will find out soon enough that her car has been broken into. I'd prefer not to find out what would've happened if Novalert hadn't been a presence and made a potential rapist leave campus grounds. One still has the potential for harm, the other the harm is already done and cannot be corrected with an extra few hours of notice regarding a car break-in. Why cry over spilt milk?

Regarding the break-in at the residence halls. Having been locked out of my room before, I know it is not easy to get into a room without the appropriate key. I wonder: Did the student lock their door? Shut and lock their window? Did the student take the necessary precautions? Doubtful. If they did, and the break-in still occurred I find it frightening that no students saw it occurring and did nothing to stop it.

As for Novalert's little car chase. I'm damn proud of them for doing it. Reckless driving is a major problem on our campus. Students run stop signs all over campus. It is only

see EDITOR on 11

RUDENESS AND APATHY AT NSU

by Helena Ioannou
Contributing Writer

Have you walked on the pathway from the Jamaican Me Crazy Cafe to the computer lab? Or left your class through the east entrance? If you answered yes, then answer my next question. Do you stop and hang out there? If you answered yes again, then you must be familiar with this covered area where most NSU students like to congregate before, between, and after classes. Students sit on benches, at tables, and on stairs while they study or talk. On any Monday through Friday it is possible to see a display table set up. These tables have advertisements for clubs, sororities, or fraternities. Each organization is giving themselves some P.R.

My final question to is: When you see these tables, do you stop? If you answered no, then the following is for you. These clubs and or-

ganizations survive on the continuing student body's support and participation. So why don't you stop to take a look at what is being offered at the tables? It is a sad fact that the organizations have to offer a bribe in order to catch people's attention. Just last week I was offered free cookies if I would stop and read HIV statistics. While I was reading, some girl came up to the table, took a handful of cookies, and then just left without even saying, "Thank You." How rude. She could have at least pretended she was interested. Now, I can understand if you are late to class and don't have time.

But, if you are just sitting there hanging out, why not take the time and give some attention to the tables? In fact, you might pick up something you never heard before. Besides, all learning doesn't come from inside the classroom. I try to stop and listen for a few minutes to what these

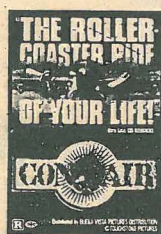
see NSU on next page

Movies Premiering in 1998 AT THE FLIGHT DECK MOVIE THEATER

FREE Movies! FREE Popcorn!
EVERY MONDAY AT 7:45 P.M.
& TUESDAY AT 8:30 P.M.

January

12, 13 SWINGERS
19, 20 CON AIR
26, 27 MEN IN BLACK



February

2, 3 CLERKS
9, 10 CASABLANCA
16, 17 HIGHER LEARNING
23, 24 BLADE RUNNER (DIRECTOR'S CUT)

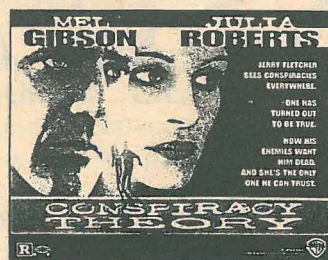


March

9, 10 FOUR ROOMS
16, 17 EMMA
23, 24 RESERVOIR DOGS
30, 31 CONTACT

April

6, 7 GROSSE POINTE BLANK
13, 14 CONSPIRACY THEORY
20, 21 12 MONKEYS



LOCATED ON THE 2ND FLOOR OF THE
ROSENTHAL STUDENT CENTER
CALL 262-7288 FOR MORE INFORMATION!

Novalert: For Whom?

from page 8

two months ago. "Student Y" is still waiting for that call.

Do we have to wait for a real tragedy to happen in order to open the eyes of the Nova Southeastern authorities? They must do something about this. Novalert should reconsider their priorities. Many residents from the dorms are really upset about this situation and are starting to feel unsafe here. This is not good for concentrating on our school tasks, and it's certainly not good publicity for our school. We are all waiting for a solution to this problem.

for Editor's response see upper left corner of this page.

from page 5

Theater Beats

ern students if they shared the same feelings that I had about The Theater. Jackie Kopec, a freshman, stated, "...this club is great. I never stopped dancing. The music was just too good." Sameer Farooki, from New Jersey, commented, "This club reminded me of home, and we are known for some of the best clubs around. I really liked the sofas they had available for us."

I recommend The Theater to any student. If you are interested in checking out this hot spot, The Theater is located at 3339 North Federal Highway in Fort Lauderdale. I suggest calling for additional information about their speciality nights. The number is (954) 565-5522. Also for you high tech geniuses, The Theater has a web site: www.southflorida.com/thetheater.

Organizational Standards Board member comment on SGA Executive Board Actions

by April Averell

Organizational Standards Board

If I was given the opportunity to meet with Dr. Lewis, the president of Nova Southeastern University, I would ask him who really makes the decisions within the Student Government Association. As a member of the Organizational Standards Board (OSB) of the SGA of the Undergraduate Center, a disturbing issue has been brought to my attention. Another branch of the SGA recently voted on whether or not to remove a "No Parking" sign without using proper Student Government channels. This unanimous

decision among this branch of government was a protest against the administration who had not informed any sector of Student Government why new "No Parking" signs would be installed. After the meeting was held, all the members participated in the removal of a single parking sign (it was then secured in an office on campus) to make a firm statement. Reflecting upon their rash actions, members returned the no parking sign unharmed to its original location the next day.

More than a week later an emergency OSB meeting was called to discuss whether or not a formal investigation should be conducted.

I do believe there should be a formal investigation as to why this did not go through the proper channels of Student Government. As I understand it, Student Government is supposed to reflect the opinions and wishes of the student body in an organized and controlled manner. This was not done.

No part of Student Government was notified that any action would be taken against the individuals involved.

The 'rumored consensus' is that the administration wants to have everyone involved in the removal of the "No Parking" sign impeached from office. These individuals should be held accountable for their actions, but I do not agree this is the correct way to punish them. All of these students have dedicated their hard earned time, beliefs, and opinions about how to better serve the student body and make NSU a better place to live and attend classes.

Who really makes the decisions about how Student Government functions and is run? According to the constitution, doesn't the Honor Court have jurisdiction over this matter? How can the administration secretly demand that all of the individuals be impeached? Why too should the administration sidestep the proper channels of the Student Government process?

I thought the student government was run with, by, and for the students at NSU. There is a constitution that must be abided by. This mistake was made in unison by an entire board of members who believed they acted in good faith for

the benefit of the student body. I believe the punishment should be determined by their peers in another branch of Student Government. I thought the Honor Court was established for this purpose. The administration should not be allowed to penalize the entire board in such an extreme manner. As a punishment, the administration could decide to put these individuals on probation, verbally reprimand, or fine them.

Stripping these individuals of their office will do no good to anyone in the long run. This will cause a setback in the entire Student Government process. This will send a negative message to the entire Student Government and student body, that no matter what their opinion is, the administration has the final voice in all matters. If this is the case, why do we need Student Government at all?



Schick
Super Hoops

3on3 Basketball Tournament

Men's and Women's Divisions • Exciting Prizes from Schick
Winners advance to Regional Championships

www.schick.com for the latest Super Hoops information

Registration Information

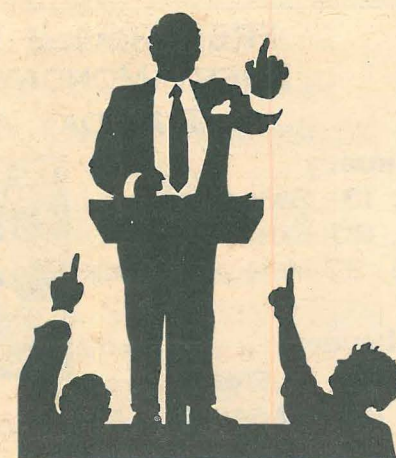
DATE: January 31

TIME: 10:30 am

WHERE: RecPlex

DEADLINE: January 27 @ 5pm

For More Information: 262-7301



NSU Apathy

from page 9

people have to say. Just imagine if that was you sitting there all day, wouldn't you want people to pay attention to what you had to say? Most of the time these tables are for our benefit. Unfortunately, we are just too cool to stop. I have a problem with people who are rude, and not stopping to support someone or something is rude..

Editor Responds

from page 9

a matter of time until someone is hit, possibly one of the pre-schoolers. In fact in the past 10 days there has been a case of one of the riding lawnmowers getting hit by a car while on campus, while being driven. Pedestrians have the right of way, but that doesn't really matter if you're face down on the pavement. As to why Novalert would drive 10 miles per hour, I can list several. Driving quickly is not conducive to looking for car thieves or other criminals. In addition driving this way sets an example for those around you to drive slower, and it slows down whoever may happen to be behind the officer's car if they are tempted to drive quickly

As to the parking situation, I have no idea where Mr. Nunaihed got the idea that firelanes do not get blocked. In my four years here, I've seen more blocked fire lanes than I'd like to remember. It is a problem. Why, I don't know, but I have never had to walk more than 3 minutes from a parking spot to the building I am trying to get to. If you need to

park in the first four rows of the parking lot, it might be a good idea to get to school a little earlier. As a side note, the other day I had the pleasant experience of getting a legal parking spot on the north end of the Parker building in the loading zone. While I was outside to get something from my car, I saw it was 100% blocked by a truck that was unloading its shipment. Thank goodness I didn't have to leave at that point.

I don't have access to the details you do about "Student Y," but I do not see how "obvious" it was that the person fell on the car. It seems somewhat farfetched to me.

It is now time to add in my own two cents about Novalert. I have called Novalert for a few crimes in progress and was actually quite amazed by their rapid response time. One must look at the bigger picture. What are the effects of driving over the speed limit on campus, and so on? We must also consider our crime rate compared to that of other schools. Our low crime rate is something to be applauded.

Help for Psych Majors

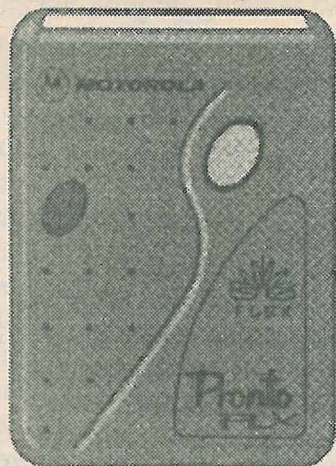
by Nicole Shiber
Communications Director,
Psychology Club.

Graduate school in psychology, a dream or a possibility? When and where do you start when it comes to applying? Want some ideas of agencies that you can apply to for work after you graduate with your bachelors degree in psychology from the fabulous Nova Southeastern University? Answer to these questions and more: Nova Southeastern Psychology Club. The majority of the executive board are currently in the process of applying to graduate school, so they can help you with what to expect. They also have been through a number of psychology classes, so again, they can tell you what to expect. Overall, the club serves as a way to meet with other students that are interested in a career in psychology. We are academic and community minded with a social twist.

The events for the club have been geared for the undergraduate student

who plans to continue their education in psychology or is interested in going directly into the working world. We are constantly thinking of the future as well as the present. So far we have had our annual graduate school information meeting that gave members the opportunity to talk to the people with the answers: Dr. Barone from the Center for Psychological Studies, and our own Dr. Malouff who has memories of the application process himself and has been a helpful mentor for students currently in the process. Also at the meeting were two representatives of the clinical psychology program offered at CPS, one each from the Psy.D. and Ph.D. programs. Along with the graduate school meeting we periodically offer practice GRE's to hone people's skills and to aid in their continual studying for the test.

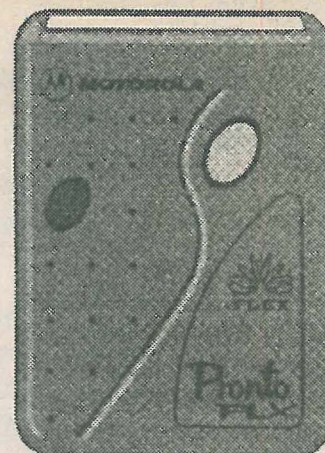
Other meetings planned for the year are about agencies in the area, volunteer opportunities (get that experience now), and areas of interest (for example, the population of fe-



Beeper Service

\$2.95 Monthly

Paid Annually



4232 DAVIE RD.
1 1/2 MILES
FROM 595
DAVIE

NEW MOTOROLA
PRONTO FLEX BEEPER
WITH ONE YEAR OF
SERVICE

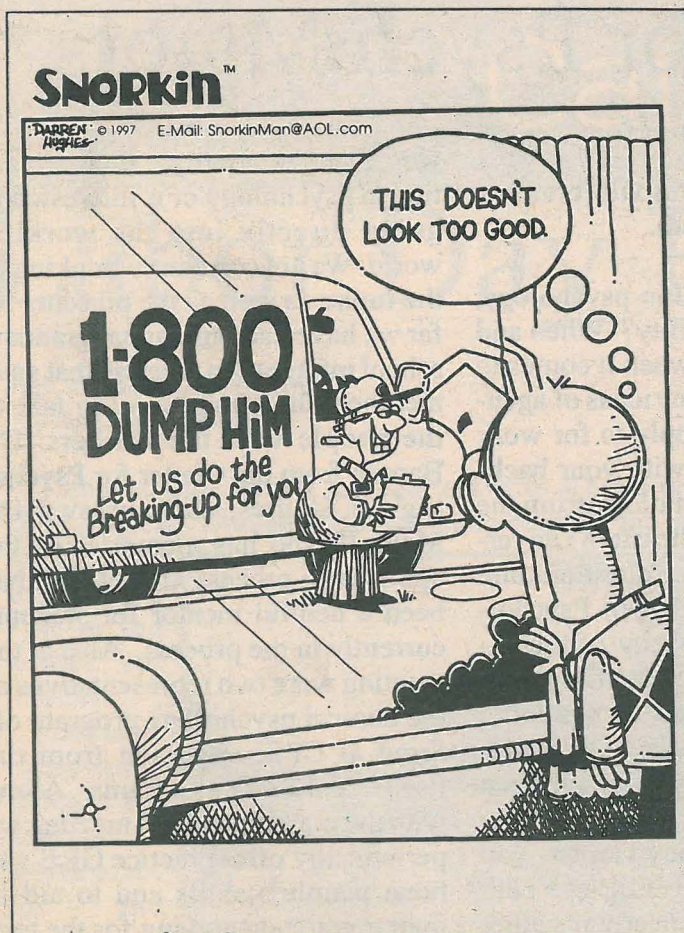
\$85.00 WITH
COUPON

FREE

CONNECTION
ON ALL BEEPERS
WITH COUPON

(954)
791-1491

SONIC BOOM
MOBILE ELECTRONICS & PAGERS



Lost in the maze of love? Desire that special someone, but lack the gallantry to tell them?

Let *The Knight* help! Email us your LoveLine for free publication in the next issue (2/11/98) of *The Knight*. Anonymity guaranteed if requested!!!!

<nova.love@mailexcite.com>

What is it??

The photo accompanying this text is not a misprint.

It is *The Knight's* new contest. If you are the first one to correctly identify what this is a close up of, you are the winner of a \$10 gift certificate to The Pizza Loft. As with all contests there are some rules, some will help you in figuring out what this is, so keep on reading.

1. The photo is of something in or around the Parker Building.

2. The precise location of the item does not need to be given in the answer, just what the items is

(For example, if this was a photo of a car tire, you wouldn't have to identify which car or tire, merely that it is a tire).

3. To submit your answer, go to: <http://www.nova.edu/cwis/knight/what-is-it.html>. If there is a notice on the page that a winner has been found, do not submit your answer.

The correct answer will also be posted there at that time.

4. Staff members of *The Knight* may not enter the contest.

5. Arrangements will be made to claim your prize, once your entry has been confirmed as being correct.

NO ONE, got the correct answer to the last issue's 'What is it?' The picture was a closeup of the "IT" from an "EXIT" sign.



Psychology club offers help for students.

from 11

male prisoners). We also are always open to suggestions as to what sparks your interest. Want to work with the elderly? Suggest that we have someone speak about what it is like to work with that population. It could be the first exposure to the actual "ins and outs" that come with working in the psychological field. Perhaps after the meeting you might want to go in a different direction completely (good idea to try things out now and not when you are already in a graduate program).

We aren't promising the moon and the stars, but we are here to help. Professors are impressed when a student utilizes all of the resources available to them, and we are a great tool for psychology students. We are always growing and looking for new members. Our Audix number is 262-5799. If you ever want to know what is going on with the club, call us or leave us a message, and we will get back to you as soon as possible. If you are interested in becoming a member, leave us a message or come to our next meeting. We meet every other Thursday, 4:30-5:30 in Mailman 311. Also, you can check out our bulletin board on the third floor of Mailman to find out our upcoming schedule. Through the information at our meetings and the internal satisfaction of giving to the community, you are only helping yourself, so join the club!

Knight Staff and Policy

Editor in Chief

Nathan Burgess

Associate Editor

Angel Sanchez

Campus Life Editor

Andrea Solheim

Sports Editor

Kristen Phass

Layout Editor

Piper Griff

Assistant Layout Editor

NOW HIRING

Photographer

Victor Garcia

Entertainment Editor

Tonny Thomas

Distribution Manager

NOW HIRING

Advisor

Caroline Geertz

Consultant

Dr. Chris Jackson

S.C.O. Business Manager

Yiralyann Ramirez

S.C.O. Associate Manager

Sherri Waddell

Business Department Advisor

Prof. James Dean

The *Knight* Newspaper serves Nova Southeastern's Farquhar Center for Undergraduate Studies from its office on the second floor of the Rosenthal Student Center at NSU's main campus.

The *Knight* is NSU's established vehicle for the transmission of student reporting, opinion, and arts. All community members are invited to contribute anything they desire to *The Knight*.

The *Knight* is readily available at several sites around the campus and the local community, including the East Campus site, the Oceanographic Center in Dania, and the Davie-Cooper City Chamber of Commerce.

Address all distribution concerns to Nathan Burgess Editor in Chief, at (954) 262-8455.

The *Knight* is now also available online.

The deadline for submissions for this year's ninth issue is 28 January 1998. The advertising deadline is 4 February 1998. E-mail the Advisor at Internet address "geertzcc@polaris.acast.nova.edu" to find out how you can become involved with the SCO.

Disclaimer:

Editorials, commentaries, and advertisements expressed in this publication do not represent the views of the University or its officials, *The Knight* staff or other advertisers. Editorials, commentaries, and advertisements reflect only the opinion of authors. *The Knight* will not publish unsigned letters except in special circumstances, at the editors' discretion. *The Knight* reserves the right to edit letters for clarity, brevity, and accuracy.