

1-17-1995

The Knight Volume 5: Issue 7

Nova Southeastern University

Follow this and additional works at: https://nsuworks.nova.edu/nsudigital_newspaper

NSUWorks Citation

Nova Southeastern University, "The Knight Volume 5: Issue 7" (1995). *The Current*. 124.
https://nsuworks.nova.edu/nsudigital_newspaper/124

This Newspaper is brought to you for free and open access by the NSU Digital Collections at NSUWorks. It has been accepted for inclusion in The Current by an authorized administrator of NSUWorks. For more information, please contact nsuworks@nova.edu.

THE



knight

THE OFFICIAL STUDENT NEWSPAPER OF NSU's
FARQUHAR CENTER FOR UNDERGRADUATE STUDIES

Volume 5 Issue 7 17 January 1995

Campus Book Store Funds Nova Southeastern Projects

Nova Books Bursar's Office Result of Philanthropy, Off-Campus Sales

by Jason Domasky

Nova Books, Nova Southeastern's on-campus book store, pledged between \$25-50,000 dollars last year to fund the recently constructed Horvitz Administration Building at NSU's main campus. The gift, which can be paid over five years, is characteristic of the \$3.5 million fundraising effort spearheaded by the Office of Development, in concert with the university trustees and administrators.

According to Vice President for Development Leslie Brown, "Gifts and pledges were given over a three to five year period in the range of \$25,000 to two million dollars to respectively name offices, areas, wings, and the entire building."

Associate Vice President for Administration John Santulli revealed that donors to the building included trustees, Broward corporations, friends of the university, and compa-

nies NSU works with.

Describing the necessity of the new building, Santulli explained, "In most institutions, you find the central administration in one building. It's good for the students, because they have to go to only one physical location to transact most of their business."

Undergraduate admissions and student advising still reside in the Parker Building. Executive and management offices have been moved from the Parker, Mailman-Hollywood, and Westport Buildings, and the Administration Trailer, to the Horvitz Building.

"It's good for the university administration, because instead of walking from one building to another to meet someone, it's much more convenient if you can just simply walk down the hall or up and down the stairs."

See **BOOK STORE** on page 7

IN THIS ISSUE

NSU Update	2
Campus Life Update	4
NSU ATHLETICS	8
Arts & Entertainment	11
Opinion	14

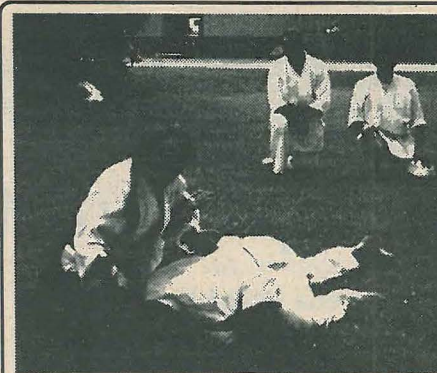
NOVA
SOUTHEASTERN
UNIVERSITY

Source Line
Sun-Sentinel



Broward (305) 523-5463
Palm Beach (407) 496-5463
Dade (305) 866-5463

CATEGORY 2810



Nova International Student Association sponsors Akido event on campus.



The Academic Support Center at Nova Southeastern's main campus burst into flames during a storm the night of December 4th. Photo by David Nurbin, who was on the scene when firemen arrived.

Academic Support Center Trailer Burned During December Storm

by Heidi Palmer

The Academic Support Center (ASC) trailer experienced a fire December 4th, 1994. Lightning struck a converter box, causing the fire.

Dr. Stephen Levitt was in his office in the nearby NC/SSSS trailer earlier in the evening. He said the storm's thunderclaps sounded like "bombs dropping," so he decided to leave his trailer because of possible danger.

Language Arts Director Marsha Sinagra's office was completely destroyed. Math Director Gail Levine's

office experienced extensive losses due to the smoke damage. Almost all of the Center's books, handouts, and computer software were destroyed.

All the computers were demolished in the fire as well. Thankfully, no one was hurt.

The ASC has relocated to the CCIS module, located across from the NC/SSSS trailer. Tutoring has not been cancelled.

See **LIGHTNING** on page 7

CALL THE

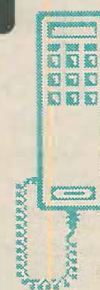
Poll Line

(305) 452-5588

24 Hours a Day

Do you believe commuter students' concerns are fairly addressed by Nova Southeastern's administrators?

CALLS ARE ANONYMOUS AND FREE





Update

Nova's Ark

Our Experience With Tropical Storm Gordon

by Michelena Holiday

The week of November 14-17, 1994 was like a nightmare for many and to others a recurring one. The nightmare was Tropical Storm Gordon.

Gordon whipped through South Florida with hailing rains and forceful winds. Some commuters lost pieces of their fences, limbs from trees, and access to the outside due to the heavy flooding.

On the first day of the tropical storm, South Florida was put on warning. Colleges such as Broward Community College (central campus), St.

Thomas University, Florida Atlantic University, and Florida International University closed their doors.

However, Nova Southeastern chose to remain open. This decision caused a mixed reaction among NSU students and faculty.

To some, the concern was about the safety of commuters who travel a distance to their classes.

According to undergraduate Joel Natt, "I believe that NSU's choice not to close down its doors during Tropical Storm Gordon was a poor choice, being that approximately half of the students enrolled here are commuters and had to either drive to school

or miss class."

Nova College Student Government Association Commuter Representative Herve Jean-Pierre agrees, "I feel it was wrong because it was dangerous for those who have to commute.

Most of us come from far away."

However, not all commuter students had this opinion.

Elias Bias III, who is also a commuter student, said, "I felt it was okay for me that Nova was open with this weather. I was driving and it was dangerous. But the professors were in the school."

Yet Bias pointed out, "Not all students came. Some people were afraid to drive, it was dangerous. But this is a private school, and a decision had to be made."

Another concern was about the flooding situation that prevailed on the main campus.

Mona Lai, a resident student, said, "Sure, it's okay to walk in the flood

water; it's no big deal, except that someone may get sick because of the germs in the water."

Commuter student Angelina Herard agreed, "I think it's kind of dangerous. The rain was difficult to deal with, but there is also the fact that the flood water could be contaminated."

Student Tina Watkins suggested, "NSU must establish, implement, and communicate guidelines for tropical storms and other severe inclement weather as well. We must remember that ensuring the safety of students, faculty, and employees outweigh the inconvenience of rescheduling classes and other campus activities."

See **STORM** on facing page



The gazebo and open space near the Parker Building at NSU's main campus, flooded. Photo by Michelena Holiday.

Novalert Patrols 75th Avenue Safety Concerns Unfounded

by Jason Domasky

75th Avenue, a road dividing the west side of Nova Southeastern's main campus from the soccer fields and basketball courts, has recently been the focus of student concern. Personal safety on and along the road has been questioned due to confusion over whether the Office of Public Safety monitors that part of the campus.

Novalert has not stopped patrol-

ling the area. Novalert Officer Randy Rosenberg said the 4 PM to midnight shift patrols the "South Zone," which includes 75th Avenue, the Baudhuin Oral School, the Lower School, the small houses, and all dormitories.

Novalert's primary concern is the safety of students and the cars in the parking lots. When not roaming through a zone, officers usually wait in the parking lot adjacent to the sports fields.

Knight Staff & Policy

Editor-in-Chief

Jason Domasky

Associate Editor

Heidi Palmer

Campus Life Editor

Michelena Holiday

Sports Editor

Daniel Illman

Layout Editor

Lisa Alicea

Copy Editor

Jennifer Morgan

Advisor

Dr. Chris Jackson

S.C.O. Business Manager

Anthony Dominici

S.C.O. Asst. Business Manager

Mary Matos

Business Department Advisor

Prof. James Dean

The Knight Newspaper serves the Nova Southeastern University community from its office on the second floor of the Rosenthal Student Center at NSU's main campus. The Knight is the publishing arm of the Farquhar Center for Undergraduate Studies' Student Communications Organization (SCO), affiliated with the WNSU Radio Station and the SCO Business Department.

The Knight is NSU's established vehicle for the transmission of student reporting, opinion, and arts. All community members are invited to contribute anything they desire to The Knight.

The Knight is readily available at several sites around NSU and the local community, including the East Campus site, the Oceanographic Center in Dania, and the Davie-Cooper City Chamber of Commerce. Address all distribution concerns to Jason Domasky, Editor-in-Chief, at (305) 370-5670.

The deadline for submissions for Issue 9, which appears February 13th, is January 27th. The advertising deadline for Issue 9 is February 1st. E-mail the Editor at Internet address

"domaskyj@alpha.acast.nova.edu" to find out how you can become involved with the Student Communications Organization.

WE'LL ERASE YOUR COLLEGE LOAN.

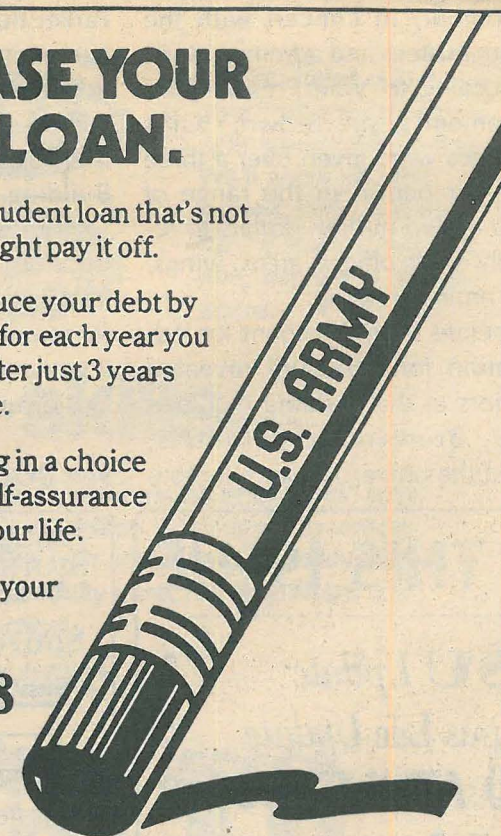
If you're stuck with a student loan that's not in default, the Army might pay it off.

If you qualify, we'll reduce your debt by $\frac{1}{3}$, up to a \$55,000 limit for each year you serve as a soldier, so after just 3 years you'll have a clean slate.

You'll also have training in a choice of skills and enough self-assurance to last you the rest of your life.

Get all the details from your Army Recruiter.

305-594-8558



ARMY. BE ALL YOU CAN BE.®

Student Life Watchdog

Activity Reports of Student Life Staff and Assistants

by Jason Domasky

The Office of Student Life compensates students as assistants, liaisons, and presidents of specific areas of operation. Students are hired for two semesters and receive a private dormitory room and a cafeteria meal plan in return for fulfilling important roles in undergraduate student activities.

Reported here is the activity or inactivity of these well-compensated individuals. The offices of most SLA's are on the 2nd floor of the Rosenthal Student Center at the main campus.

The Greek Affairs Advisor

Scott Chitoff, a Student Life senior staff member and Director of Greek Affairs, is on the National Task Force on Community Service of the National Association of Fraternity Advisors.

Chitoff is writing a manual for developing community service for Greek organizations, assisted by Liaison for Campus Volunteerism Sarah Polo.

Chitoff is planning the February 25-26th "24-Hour Softball" event, co-sponsored by the Greek Council and the Campus Entertainment Board.

The Liaison for Campus Volunteerism

The Campus Volunteer Board, headed by Liaison for Campus Volunteerism Sarah Polo, currently has three members. Having recently adopted the Office of Student Life's new board structure, the potential exists for five more members to join.

Few, if any, instances of non-Greek volunteerism occurred during the Fall Semester. An April Hunger Clean-Up is in the planning stages.

The Liaison for Public Relations

Liaison for Public Relations Mikey Betesh has pushed back the start-up date for Accent TV, a student-run television project, from January 30th to a date to be announced.

Fourteen students currently participate in the project. Financing concerns and lack of involvement were cited.

"Nova Extreme," an action documentary show planned for Accent TV, is currently producing a debut featuring alligator wrestling. An Accent magazine/yearbook publication is planned for late April.

The Liaison for International Student Affairs

Liaison for International Student Affairs Juan Pablo Correa is planning an International Festival for February. The event will be co-sponsored by the Nova International Student Association and will feature a United Nations theme, with booths for participating countries and travel agencies.

International Students Advisor Debra Puzzo currently refers new students to Correa for orientation at NSU and in the local area.

The Campus Entertainment Board President

Campus Entertainment Board (CEB) President Danielle Daulerio adopted the new, eight-member board structure of the Office of Student Life. Five members currently sit on the board, with the potential for three more to join.

Advisor Stephanie Castonguay assisted the CEB with research and planning for second-semester events.

New ideas include "theming" Thank Goodness It's Friday events (mystery, caricatures, "Hollywood Squares"), showing recent and classic movies, setting up a "coffeehouse" (with espresso machines in the Rosenthal cafeteria), arranging for rock bands to perform, and bringing more "college circuit" performers to NSU.

The Liaison for Commuter Affairs

Liaison for Commuter Affairs Gayle Applebaum is creating a newsletter for commuter students to inform them of campus events and commuter-related issues. The first-semester "buddy program" paired 65 experienced students with new students, but saw only limited follow-up efforts.

New Student Government Association (SGA) Commuter Representatives Herve Jean-Pierre and Kim Fichera may participate in Applebaum's efforts. Applebaum's current thrust is toward visibility, following recent complaints over commuter representation at SGA meetings.

See WATCHDOG on page 6



Update

"Disk Resume" Broadens Horizons

by Cheryl Krueger

Nova Southeastern's Career Resource Center (CRC) features the new "Disk Resume." "Disk Resume" offers students direct access to job openings via computer. The service allows students to conduct a quick computer search for positions in their field.

With "Disk Resume," there will be no paper registration forms to fill out for the CRC. The service forwards your resume to employers looking for people in your field as soon as you purchase and complete it.

"Disk Resume" is for part-time and full-time positions while you are still in school and for those great full-time positions after graduation. Stop by the CRC with a check for \$10.00 receive a copy of "Disk Resume."

Any questions? Call (305) 475-7504 or stop by the CRC in the Horvitz Administration Building.

Storm Brings Action, Reaction at NSU

Continued from facing page

Many faculty members showed overwhelming support for the school's decision.

Dr. Steven Levitt said, "I do not think that the storm was of sufficient strength to warrant the closing of the university. I taught all of my classes and a majority of students were in attendance."

Levitt added, "This is a case where the administrators of NSU were absolutely right. It is a bad idea to give students the message that classes are cancelled the minute conditions are no longer perfect."

Joshua Feingold also felt that closing the school would have been unnecessary.

He said, "It is a disservice to close the school when it is not necessary."

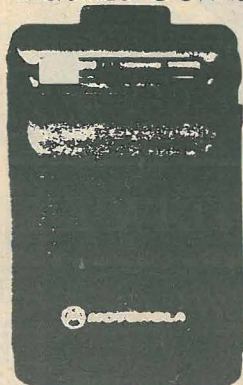
However, Feingold was quick to point out, "It is important to acknowl-

See TROPICAL on page 6

ULTRA COMMUNICATIONS

GET A BRAND NEW BRAVO PLUS BEEPER FREE

REQUIRES CONNECTION & SERVICE AGREEMENT



- 16 memory
- Beeps and Vibrates
- No deposits or last month required
- BRAND NEW - Not Reconditioned
- Factory Warranty
- Shows time calls were received
- Range: Key West to Vero Beach
- Response Time: 8 seconds
- Free loaner if repairs are needed
- Extra Long Battery Life
- Time Stamping

SPECIAL OFFER TO THE NOVA COMMUNITY

Reconnect your beeper for **FREE** with us and receive a **FREE** pocket calculator or designer gold chain.

Call today for more information

BROWARD - 926-3332
2500 Hollywood Blvd., #311

DADE - 238-0011
8504 S.W. 129th Terrace

Campus Life

Florida Future Educators of America Collect a Library for Bahamian School

by Michelena Holiday

Florida Future Educators of America is a club at NSU designed for believers in education, whether members are education majors or not. According to FFEA President Joe Balchunas, the organization provides a forum to discuss education-related issues.

Balchunas pointed out the impor-

tant aspects of FFEA, "There is a lot of networking outside of the classroom with the faculty and administration, as well as representatives of Broward and Dade County Boards of Education."

Balchunas added, "We also want to make known the importance of education, especially for the children

See **EDUCATORS** on page 7



Akido comes to NSU in front of the Parker Building at the main campus. Photo by Jason Domasky.

Nova International Student Association Sponsors Akido Demonstration

by Michelena Holiday

The Nova International Student Association (NISA), with the assistance of the Office of International Student Affairs, sponsored *Japanese Cultural Day*. On November 30, 1994, "Akido of South Florida" demonstrated their art in front of the Parker Building.

Akido is based on the spiritual teaching and religious devotion of Master Morihei Ueshiba, O'Sensei, who founded the art in 1883 in Western Japan.

Akido maximizes self-defense with minimal force. Akido's goal is to achieve harmony and redirect the opponent's energy against them.

Akido not only uses open hand techniques, but the wooden sword and staff as well. In this art, exten-

sion and focus are emphasized principles.

Unlike other martial arts, Akido is not a competitive sport. In fact, all forms of contests and tournaments are rejected.

O'Sensei believes that such things fuel egoism, self-concern, and disregard for others.

O'Sensei wants Akido to be known as a way of life and an art that demands self-discipline, harmony and peace of movement.

Akido in South Florida is instructed by Stephanie Yap with the support of Morihiro Saito Sensei 9th dan, who was present at the NSU demonstration.

Members of NISA served Japanese food during the presentation. For further information on Akido, contact Yap at (305) 434-8268.

Pan African Student Association Comes Home With Trophy

by Michelena Holiday

On November 10-13, 1994, members of the Pan African Student Association (PASA) took a trip to Jacksonville, Florida to attend the Florida African American Student Association conference. During this trip members attended informative and enriching workshops and luncheons.

These NSU students were able to attend workshops on team building, political empowerment, the effects of self-hatred, health, history, education, and leadership. Speakers and presenters included influential African-American educators, politicians, and businessmen and women.

Among the activities PASA participated in, the highlight was the victory won in the Pan-African History Quiz Bowl.

The NSU team of Tamara Taylor, Christie MacDonald, Coeurlande Carry, and Owen Huntley answered questions on African history, African-



PASA President Quantanease Tya' Franklin. Photo by Michelena Holiday.

American history, religion, literature, and inventors.

The NSU team received individual trophies during the Presidential Banquet. *Congratulations, PASA!*

NO Other Station Like It!

Giveaways **WNSU** Great Music

GET IT TODAY!!! **92.9** NSU Sports Source

Have Fun! **CAFM** Be A DJ!

NSU'S Radio Alternative Station

Start the New Year with some excitement. WNSU is NOW making appointments to hook your dorm room up to receive **WNSU LIVE!**

This is a **FREE** service brought you WNSU 92.9 caFM and Jones Intercable. Call WNSU at 475-7419 and make that appointment **TODAY!!!**

Those of you who live off campus and want to get WNSU in your home, call the WNSU studio for more information.

Kwanzaa: The Celebration of African Heritage PASA Workshop Influences NSU Student

by Tamara Taylor

On October 8, 1994, NSU's Pan African Student Association held a workshop on the Kwanzaa holiday. The workshop was facilitated by Donald Cleveland, the Director of the Academic Intervention Program at Broward Community College.

Kwanzaa is a holiday celebrated by 5 million peoples of African descent throughout the country from December 26-January 1. Created by Dr. Maulana Karenga in 1966, Kwanzaa is a celebration of our African heritage and our families.

In Swahili Kwanzaa means "first fruits," and the practices of "first fruit" were adapted by Karenga for this celebration.

Cleveland's first lesson was that of preparing your table with the symbols of Kwanzaa. Within each household, there should be a table set aside with the symbols of Kwanzaa, which all have a special meaning and place during the celebration.

The first thing in preparing a table is laying the "foundation," or the *Mkeka*, which means "mat." Upon the *Mkeka*, the *Kinara* is laid. The *Kinara* symbolizes our roots or our parent people-Africans.

Within the *Kinara* we place *Mishumaa Sabba*, which means "the seven candles." These candles symbolize the seven principles of Kwanzaa.

The *Mazao*, which means "crops," are laid next. The *Mazao* symbolizes the rewards of fruitful and unified labor.

Once the *Mazao* is placed, we then place the *Muhindi* ("corn") upon the mat. The *Muhindi* symbolizes our children, who are our future.

We then lay the *Zawadi*, meaning "gifts," upon our table. These gifts symbolize the love and hard work of our family and friends.

The last thing on the table is the *Kikombe Cha Umoja*, which means

See KWANZAA on page 6

Psychology Club Hosts Graduate School Speakers

by Lena Hall

Nova Southeastern's Psychology Club is on a roll. This January we will have two professors from the Graduate School of Psychology come to speak with us.

On January 25th, Dr. John Lewis will speak about multicultural issues in the field of psychology. Also, Dr. Bady Quintar will be coming to speak

about short-term psychotherapy. These seminars are open to everyone.

The club is also involved in its own research study titled "The College Experience." The club also conducts community volunteerism.

Drop by one of our meetings. They're held every Wednesday at 4:30 PM in the Rosenthal Student Center at NSU's main campus, on the second floor.

Campus Life

ASC Language Arts Center Offers Resources, Workshops

by Marsha Sinagra

The Academic Support Center's Language Arts Center, newly relocated in the CCIS modular trailer, is a multifaceted center which provides students with the academic support necessary to succeed in college.

The Language Arts Center is designed to help students by providing individualized instruction in reading, writing, study skills, computer literacy, and CLAST and SAT preparation. Supportive faculty and tutors aid new and returning students in making the transition into academic life.

The Language Arts Center's faculty and tutors offer assistance with all phases of the writing process—planning, organizing, researching, documenting, writing, and editing.

Students can review English grammar, structure, and pronunciation through programs designed to meet their specific needs.

Computer-assisted instruction, practice exercises, and videos are

available to help students master these important skills. Additionally, students are invited to attend one of the many study skills workshops that are offered throughout each semester.

Workshop topics include goal setting and time management, note taking strategies, reducing test anxiety and test-taking strategies, concentration and memory techniques, and APA documentation style.

International students and speakers of other languages may attend a series of conversation workshops designed to help them develop and refine their communication skills.

The Language Arts Center computer lab has computers and programs available for students to use when writing papers, accessing e-mail, or working with the Computer Literacy (CAP 111) tutor.

The Center is open Monday through Saturday. Students are encouraged to make an appointment by calling (305) 475-7479 or stopping by the CCIS modular. "Help us, help you, help yourself."

WORDPERFECT SAYS WELCOME BACK!

AND TO HELP YOU START BACK IN STYLE, THE ALL-NEW
WORDPERFECT 6.0A
IS JUST

\$99.00!

WORDPERFECT IS THE *ULTIMATE* WRITING TOOL FOR YOUR COMPUTER, AND 6.0 (for DOS or WINDOWS) IS LOADED WITH GREAT NEW FEATURES, INCLUDING SPREADSHEET & FAX CAPABILITIES, AS WELL AS THE AMERICAN HERITAGE ELECTRONIC DICTIONARY, BUT THIS INCREDIBLE OFFER IS ONLY GOOD FOR A LIMITED TIME, SO *HURRY!*

NOVA BOOKS

MAIN ENTRANCE (IN ROSENTHAL BUILDING) 476-4750
MONDAY-FRIDAY 8:30 AM-6:15 PM, SAT. 10 AM-1:30 PM
YOUR ON-CAMPUS BOOKSTORE & MORE!

Resident Advisor Positions Available Informational Sessions January 18, 19, 22, 24

by Heidi Palmer

If you are interested in becoming a Resident Advisor for the 95/96 Fall term, you must attend one of the four RA informational sessions.

You can pick up the application

at the sessions. They will be held January 18th, 19th, 22nd, and 24th at 8:00 PM in the Goodwin Hall first floor classroom.

If you have any questions, contact Rick Mayfield at the Office of Residential Life, at (305) 475-7052.

Campus Life

NSU Recycling Back on Its Feet

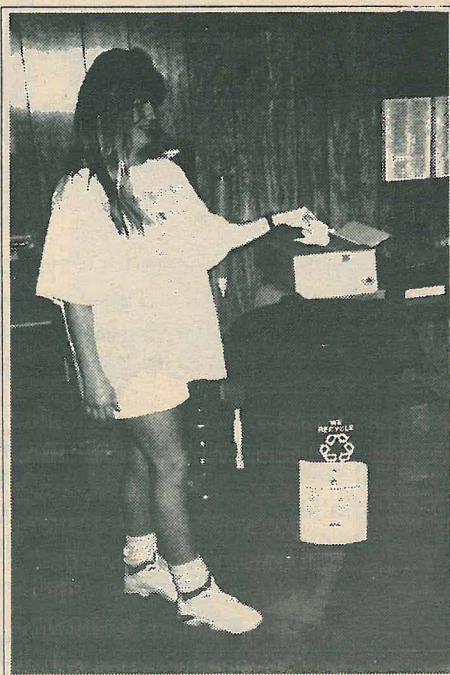
by Heidi Palmer

This September, the recycling program got back on its feet here at Nova Southeastern. NSU has contracted with Southern Sanitation.

Outside, metal white dumpsters have been provided for paper and cardboards while the burgundy dumpsters serve for regular trash such as banana peels and wax paper.

Also, small blue desk side recycling containers have been distributed in offices. If you haven't received a blue container, contact *Physical Plant*, 452-1570.

One of Charlene Swanson's goals for NSU is for the white bins to get larger and the burgundy bins to decrease, thus encouraging more recycling on campus and less throwing away of trash.



Kimber Sharp recycles. Photo by Heidi Palmer.

Swanson would also like a student group or organization to take over aluminum recycling on campus. This could be a fundraiser for the group.

For more information about the recycling program, the Environmental Committee meets every month. For the dates of those meetings, contact *Charlene Swanson* at 475-7096.

Join the recycling wave at NSU!

Watchdog Reports on Student Life Liaisons' Activities, Inactivity

Continued from page 3

The Nova College Student Government Association President

NCSGA President Shaji Eapen is a compensated Student Life assistant like the liaisons and others described here. The NCSGA's activities are an independent endeavor of concerned undergraduate students, but certain

relations develop with Student Life.

Eapen is currently working with Liaison for Campus Volunteerism Sarah Polo to coordinate the "volunteerism grant" awards for community service, arranged through her office. Other developments include a Student Life-sponsored NCSGA retreat to take place January 14th-15th to discuss changes in the Office of Student Life related to the NCSGA.

Kwanzaa Celebrates Roots

Continued from page 5

"unity cup." The unity cup is a symbol the practice of unity which makes all things possible.

Cleveland explained the *Nguzo Saba*, or the seven principles of Kwanzaa. On each of the seven days of Kwanzaa a principle is appreciated.

The principles are *Umoja* ("unity"), *Kujichagulia* ("self-determination"), *Ujima* ("collective work and

responsibility"), *Ujamaa* ("cooperative economics"), *Nia* ("purpose"), *Kuumba* ("creativity"), and *Imani* ("faith").

Cleveland did a good job informing and educating the group on Kwanzaa and its meaning to the African diaspora. Cleveland also stated that Kwanzaa is a celebration of true love, encouragement and togetherness.

See *AFRICAN* on page 16

Library Welcomes New Librarians

by Harriett MacDougall

The Einstein Library has two new reference librarians, Kathleen Dunleavy and Ann Decherd.

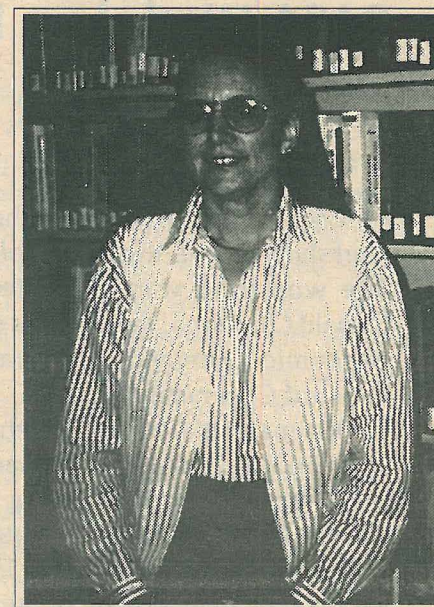
Kathleen comes to NSU with 12 years of teaching experience and eight years of experience as a librarian.

Kathleen has an undergraduate degree from the University of Massachusetts in Comparative Literature and a Masters Degree in Library Science from the University of North Carolina/Chapel Hill.

She worked in the Peace Corps in Ecuador and has international library experience.

Ann comes to NSU with seven years of experience in science and engineering librarian ship.

She has an undergraduate degree from Florida State University in English and a Master's Degree in Library



Kathleen Dunleavy, an Einstein Library reference librarian. Photo courtesy Harriett MacDougall.

Science, with a specialty in Information Science, from the same institution.

Tropical Storm Swamps Broward, Business as Usual at NSU

Continued from page 3

edge that severe weather can compromise the safety of the students both on campus and those who need to commute. But at no time did I personally feel that Tropical Storm Gordon represented a significant threat to safety."

Amidst the concerns, it has been maintained that the decision to keep the doors of Nova Southeastern open was based on the best interest of the entire college.

Dr. Stuart Horn, Dean of the Farquhar Center, commented, "the decision-making process was thoughtful, not made at the spur of the moment, and was shaped by the input of many individuals including what type of information the radio would permit."

Dr. Horn was supported by Rob Seitz, Director of Public Affairs. Seitz said that there were 'point people' monitoring the storm, people such as administrators Joe Lakovich, Steve Bias, and John Santulli.

A determination was made that no danger was involved. According to Seitz, this was because, "Broward County schools remained open and they have a younger student popula-

tion."

Seitz also pointed out that it was simpler to keep the whole university open because most of NSU's centers were not affected, and there would be a problem getting the word out to commuters to find out that class was cancelled. When asked if, looking back, would there be any changes, Seitz responded, "We would assess as things happen."

However, some faculty considered rectifying the flood problem that plagued many people on the main campus. Dr. Linda Gordon suggested, "Perhaps we should construct an Everglades-style sidewalk between the parking lots and the buildings."

The Poll Line Results

The *Knight* Poll Line for last issue (Vol. 5, Iss. 6) asked, "Do you believe Nova Southeastern's main campus should have been closed during tropical storm Gordon?" The line received 19 responses.

15 callers said, "Yes," the campus should have been closed, with many strong affirmations saying, "Yes, absolutely." 4 callers believed NSU made the right decision by staying open during the storm.

Educators Stock Bahamian Library

Continued from page 4

who will one day be our leaders."

FFEA conducted the *Bahamian Book Drive* at the end of October. Books were donated to the North Andros High School in the Bahamas to start a much-needed library.

Balchunas explained, "It was an original idea of the club to have a regular book drive. After speaking with Dr. Darvas [FFEA's advisor] and Dr. Clarke [Director of the Education Dept.], we expanded to the Bahamas.

"Since the school does not have a library system, we felt it would be a great idea to send them there."

The successful drive delivered over twenty-four large cases of books. The added plus is that FFEA found a company that will ship the books free of charge.

FFEA received a letter a from the school's principal thanking the organization. Balchunas says the biggest supporters from the campus came from the donors.

"It was great to see so many wanting to help. Special thanks go to the library and the University School.



FFEA members, from left to right: Tina Watkins, Jinette Esquivel, Joe Balchunas, and Marty Hoffer. Photo courtesy Michelena Holiday.

Also to a lot of the faculty who took books from their shelves."

Another FFEA success was the Book Fair sale December 1-3. FFEA raised \$300 and sold 1,200 books, but Balchunas was quick to add that the Scholastic Company takes a large portion of the funds.

However, the fund-raised monies will help bring prospective FFEA high school student members to NSU for a day of tours and speeches, and a luncheon. Balchunas named the effort "Bridging the Gap."

The organization hopes to start the project in late January or early February.

Book Store

from the Cover

Contributes to University

Continued from the cover

The Nova Books Bursar's Office in the Horvitz Administration Building features its name in prominent lettering on the lobby wall. Bursar Tamela Orefice is pleased with the new office, especially the improved storage space for students' records.

A number of students, who wish not to be named, expressed outrage that the book store is sponsoring office construction rather than lowering costs to its customers.

Director of Nova Books Ed Panariello countered these suspicions. "There is genuine gift-giving going on."

Nova Books profits from a hemisphere-wide sales strategy which conducts 60% of its business off-campus. All of the store's philanthropic donations benefit NSU directly.

Last May, Nova Books helped raise over \$60,000 at the 9th Annual Scholarship Golf Classic for under-

graduate athletes. Each year, the store donates funds to the Office of the Vice President for Student Affairs. Nova Books donated to the construction of the Shepard Broad Law Center.

A "double the difference" guarantee against competitors' prices gives Nova Books' customers an advantage over other college store patrons.

Panariello explained that most campus stores are run by interstate corporations such as Barnes & Noble, who do not invest profits into the universities they serve.

Nova Books may sponsor the soon-to-be-constructed pool, cabana, and recreation area. Nova College Student Government President Shaji Eapen confirmed that the plans for the area will be finalized by February.

Panariello said, "To say it's the book store against everybody else is ridiculous. In my heart, we gave money to the university to do the most good for everyone."

HEY NOVA!!!

DO YOU WANT A

SPRING BREAK

TO REMEMBER?

SKI THE ALPS

MARCH 4. - 11. 1995

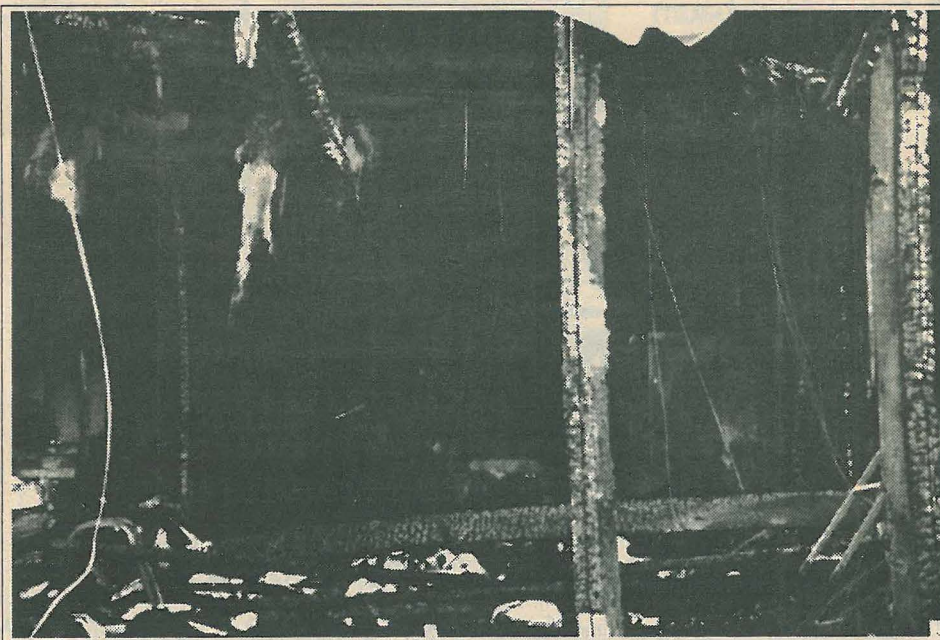
ONLY \$ 999.-- 7 days/
6 nights

HERE'S WHAT YOU GET:

ROUND-TRIP FLIGHT MIAMI/ MUNICH, ROUND-TRIP GROUND TRANSPORTATION MUNICH/SALZBURG, HOTEL INCLUDING BREAKFAST AND DINNER, SHUTTLE TO DIFFERENT SKI AREAS, ENGLISH SPEAKING SKI GUIDE

CALL NOW: (305) 926-6646
HAPPY LANDINGS TOURS

Prices are per person, double occupancy, based on specific day of departure, flights, times, and availability. Fla. sales tax and \$5 airport fee not included. Cancellation/change of itinerary penalties and other restrictions/ conditions apply. Fla. Seller of Travel Reg. No.: 21839.



The day after: exposed interior of the Academic Support Center trailer. Photo by Jason Domasky.

Lightning Strikes Academic Support Center Trailer

Continued from the cover

The complete staff from both the Math and Language Arts Centers are still running business as usual. The phone number remains the same, (305) 475-7479, along with the staff's Internet e-mail addresses.

It will take many months to restore the materials that the ASC lost. Eventually, the center will move to

the third floor of the Parker Building.

You can help. If you have taken any of Sinagra's classes in the past, and you kept some of the worksheets and handouts from the class, your old papers can be photocopied to help restore her files.

Contact the ASC for a tutoring appointment or contribute some of your spare time to help photocopy old handouts.

Poetry & Food

As I Watch

Poetry by Tamara Taylor

As I watch you, I see your inner strength
 A strength I would love for you to reveal to me
 Your knowledge overflows and you are not arrogant
 because of it
 Your neatness appeals to me
 Your quietness makes me yearn to hear you speak
 As I watch you stride about,
 I begin to envision myself at your side
 A man like you could be my inspiration
 Our love would explode like the stars
 As I watch you, I wonder what your spiritual beliefs are
 I ask myself, "Does he believe in God?"
 As I watch you I see a King in all his glory
 I see a man who knows what he wants out of life
 As I watch you, so many things run through my mind at
 once
 Many times I ask myself why is it that I watch you
 Simple.
 As I am watching you, I hope that you are watching me

Vacation

Poetry by Christopher Kehl

Tattered sweaters reborn,
 shattered emotions stitched.
 Dead end extending miles
 north,
 gray rainy skies bring forth
 blue grass.
 Foggy canals fearing albino
 bovine,
 Recycling Ginger Ale during
 a late one.
 From los negro gato to a
 twangy ashen mutt,
 starting in Barrel Town and
 leading to Gun City.
 Hypnotical wipers wash
 away my fear.
 Virgin sheets embrace me
 home slate and cold back
 at home.

Mejico Grande Delights the Senses
Local American-Mexican Cuisine Tasty

by Billy Cerbelli

Mexican restaurants are getting a hard knock these days from people who want us to live long and worship anything that looks like organic white rice. Yet anyone who frequents the restaurant scene knows that there are as many Mexican restaurants as there are steak houses.

When I want good Mexican food, I look for places that have combined Mexican and American food in the best manner. Chili's is the best chain provider for such food, but for my money Mejico Grande is at the top of the list of independents.

Mejico Grande is a small restaurant with about 15 to 20 tables. Sombreros and Mexican clothing decorate the walls around you to set the mood.

Soft, Spanish music is played in the background for that finishing touch. And of course, the aroma from the kitchen is enough to put you in a trance.

At Mejico Grande, you can begin your taste's journey with the house specialty, *Nachos del Norte*. This Mexican special includes crunchy ranch chips smothered with beef, refried beans, cheese, crispy lettuce, salsa, guacamole, and sour cream for \$3.25-\$6.50.

If nachos aren't your thing, Mejico Grande has many other appetizers to choose from.

Along with the traditional menu items, you may choose from *botones* (light puffs of pastry filled with finely minced meat and served with cheese dip) and Mexican pizza, which is a deep fried flour tortilla sprinkled with chopped beef and scallions, chili and taco sauce, then covered with layers of cheese (\$3.50-\$5.25).

I started with tortilla chips served with salsa. They provided the first clue to the kind of Mexican-American food to expect.

The chips were warm and crisp. The salsa was loaded with tomatoes and mildly spiced.

The chef added peppers with great restraint.

The second clue was the Mejico Grande chili, priced at \$1.25 for a cup and \$2 for a bowl. There was a bit of a zing to it, but nothing strong enough to knock my socks off or bring

on the sniffles.

It was a beanless version and soupier than most, compared to Chili's or Garcia's (State Road 84 and Pine Island). To top it off, the cheddar cheese was added generously.

Also delectable was the \$6.75 beef burrito, the \$7.75 combination of beef enchilada, taco, and tamale, and the \$8.95 (most expensive item on the menu) specialty, *chili relleno*. The green chili pepper was filled with chunks of beef, refried beans, and layers of cheese, then folded into a light pastry shell and covered with more cheese. Alongside were refried beans and Spanish-Mexican-American rice.

There was so much cheese on my plate, I thought I was having fondue. I liked the refried beans though, and the rice was better than most I've tried in Chili's and Garcia's. The kernels were distinct and almost crunchy.

The tamale was a lightly seasoned combination of ground meat and peppers, then rolled in a coating of corn meal dough, wrapped in corn husks, and steamed.

I would have preferred shreds of meat in the tamale as well as in the burrito and the taco, but the finely ground beef was very tasty.

No feast is complete without dessert, so you had better save room. Some of the incredible dishes you may try include flan, *bunuelos* (sweet chips), and their special *sopapillas*, which are pastry puffs topped with cinnamon and sugar, and served with honey: two for \$1.75, four for \$2.50, and eight for \$3.75.

Mejico Grande is perfect for me when I'm in the Americanized Mexican mood. Authentic Mexican decor and the aroma of freshly-made salsa fills your senses and prepares you for a culinary delight.

There is plenty of parking out front, and ramps are available for the handicapped. The staff is young and friendly. They move with confidence as they rush the dishes made to order from the kitchen.

Cooking the food and in charge are Roy and Jan Sykes and Mike and Sig Giese.

Mejico Grande is located in the Lincoln Park Plaza at 6890 Stirling road in Hollywood.

Gayle Applebaum

Commuter Student Service Liason

ATTENTION COMMUTERS!

\$ **SAVE** **MONEY** \$

NOVA
SOUTHEASTERN
UNIVERSITY

Eat A Seven Course
Meal Every Day!

"Show Coupon to Daka in Rosenthal"

DECLINING BALANCES
AVAILABLE FOR YOU!

You Pay	You Get
\$100.00	\$115.00
\$150.00	\$170.00
\$200.00	\$225.00



Poetry by Tracy Froebel

Someone once stated that Life was analogous to a roller coaster ride.
How flattering for Life which met the analogy with every stride.
Life assumed an identity which could only be captured in a work of art, an identity initiated by strife and turmoil from the start.

The ups, downs, and roundabouts an individual ensues
are indications of what Life is and how it is misconstrued.
Life embarks on a journey with a beginning and an end.
It does not make sense to hide from Life as a bear in its den.
Unlike the roller coaster,
Life is permitted distractions before the "ride" is over.

Traveling the "straight and narrow" becomes too consistent,
and is not a quality of an individual who is persistent.
That is, persistence to embark on a variety of paths to gain
experience, knowledge, and insight.

Someone once stated that Life was analogous to a soothsayer.
An individual sits down, gazes into the crystal ball,
Life unfolds, and the individual pays her.
However, the future revealed behind the curtain of beads
is determined by one's fortune, fame, and deeds.

Life adopts a persona, as in drama, which escalates, peaks, and
plummets as the "character" deems necessary.
Life twists and turns in various directions to accommodate the
swordsman or his adversary.
One travels through time, physically and mentally, unaware of the
"ride" Life has in store.
Sometimes Life seems like a tale out of ancient folklore.

Someone once stated that Life was analogous to a carriage ride.
Life gradually progresses and the individual leads his life like
the horse pulling the carriage: with pride.
Here, the individual lives his life aware that Fate is the boss.
The individual feels constrained as the horse adorned with blinders
and a saddle, but he knows he is not at a loss.

In an attempt to cut loose the reigns of Life, the individual
discovers hidden abilities he had never explored.
Though the individual experienced a negative reaction to his
rebellion, as the horse galloping from the master who held the
reigns, the individual was adored.

Someone once stated that Life was analogous to a ballerina.
Floating and fluttering above the glossed, wooden stage, how can
one miss her?
The dancer gracefully glides across the floor with such poise and
coordination.
As the peaceful rhythm of the music continues, the dancer becomes
the audience's salvation.
Life, like the dancer, can appear well-timed and choreographed.
However, Life does bring chance and bad luck, which requires one
to be lighthearted and laugh.

Life envelops the dancer and rejuvenates her and allows her
artistic spirit to bloom.
The dancer knows when to show emotion at just the opportune moment
when she is about to meet her doom.
The dancer, like Life, displays her abilities openly and proudly
as a young girl on her first date.
With each new "production," the dancer must shed her garb and begin
afresh with a clean slate.

"The Analogies of Life"

"Gift"

Fiction by Dominic Campagnone

The eye, it holds the power of every person in its little shell. They can never lie, no matter how the mind may persuade them. To someone who can read them, they are like a book. And to someone who may eat them, they are like grape jelly.

I take your eyes now and leave you alive. The blood will stop but the pain may not. I wipe the blood off my blade onto your face, so you may bear the mark of the powerless. I want you to know I will think of them often, and maybe of you, probably not.

As you stand there and curse me, I can see your power fading. I am the chosen one and can see such things. You cannot, and never will. Your power was like a ring or shield that surrounded your body, and ended in your eyes.

Like them it was cobalt blue. It now joins my shield and makes me more powerful. As I eat your eyes I complete our joining. I will let you know that they

taste like grape jelly and I enjoy them. I have no need for you now but may not end your life.

As you walk the world feeling your empty sockets, remember the gift you have given me, because I will surely not remember you.

You are a beautiful girl. Even as I cut out your emerald green eyes, I can imagine your smile, bright like the summer sun on a Christmas morning. Why do you scream so much?

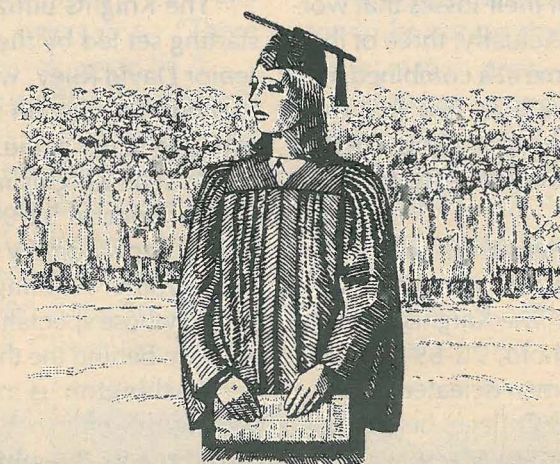
It is the time of giving and this gift you give to me is a good one. I am sorry that your long blonde hair has been stained with your blood, but you will never see such things again. You should thank me.

Your power is sea green and very cold. I wish I had a sweater, but it's the thought that counts. I leave you now with your mark of shame, because your beauty has faded. As I turn my back, I forget your face.

Oh wait, did I tell you your eyes taste like grape jelly?

1,164,999

That's how many graduates you'll
be competing with this year. . .



Get the news, insight & analysis that will put you ahead.

THE WALL STREET JOURNAL.

FOR SPECIAL STUDENT DISCOUNTS CALL TODAY

(305) 475-7736 Ext.26

Prices are valid for a limited time for students only in the continental U.S. All major credit cards accepted. Call 24 hours a day.

©1994 Dow Jones & Company, Inc. All Rights Reserved.

1994 bachelor degree graduate number obtained from the U.S. Department of Education.

Sports

Hoops!

Basketball Team Hoping to Rebound From Shaky Start

by Daniel Illman

The Nova Southeastern Knights' basketball squad began its 1994-95 season with high hopes of being a major force in and out of the Florida Sun Conference. Unfortunately with their record standing pat at 3-8 going into the winter break, Coach Jim Michaels' boys had cause for concern when they embarked on their FSC opener on January 13th.

It is not the fact Nova has played badly in most of their losses that worries Michaels. Actually, three of their defeats have come at a combined nine point deficit. Still, a loss is a loss, and costly turnovers have created outstanding scoring chances for Nova opponents.

Nova Southeastern's season began in Jacksonville versus Edward Waters College. The Knights dropped that one in a photo, 72-69. On the road again, the men defeated St. Thomas and Webber College, before journeying northward to Marietta, Georgia. The Knights left the Peach state with a bad taste in their mouths after tough defeats at the hands of Southern Technical and Athens State.

The Knights had little to be thankful for over the Turkey Day vacation as they were overwhelmed by North Dakota State, and beaten by St. Paul's College of Minnesota. The long road swing continued to Savannah, Georgia, where a grueling bucket loss to the Savannah College of Art and Design was followed by a woeful 43-

point effort against Armstrong State.

Finally, the Knights returned home and broke their six-game slide by taking the measure of Edward Waters 88-72, in a game in which the unlucky visitors arrived late to the Gloria Dei Gymnasium. Supposedly, the Tigers' left Jacksonville at nine in the morning, but still couldn't make the 7:30 PM post vs. Nova.

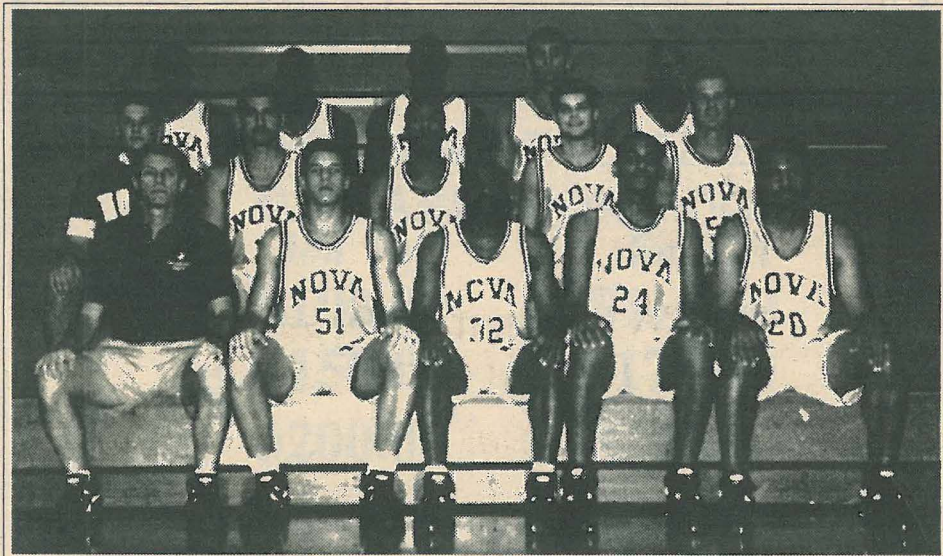
After Kofi Bass' 29-point, 10-rebound effort, Edward Waters' trip home was made all the longer.

The Knights utilize a three-guard starting set led by the sharp-shooting senior David Riley, who led this team in points last season with an average of eighteen per game. The wily Riley also led the Knights in steals and free throws made in 93-94. He is joined in the backcourt by the spunky senior Jerome Washington, and Greg Farias, whose specialties include scoring from behind the three-point stripe.

Washington is rather astute at dishing the ball to his bigger mates who shore up the middle of the floor. Jerome is always thinking as he guides the ball up the court, but his unselfish play leaves himself open for jumpshots that he has not taken.

For Nova to win, Washington must be more aggressive when the opportunity presents itself. Farias is on the other end of the spectrum, altogether. Greg only shot at a 33% clip as a junior for Nova and hasn't bettered that so far in the first eleven

See WASHINGTON on page 12



The Knights basketball team. Photo courtesy Athletic Department.

Notables and Quotables
Cross Country, Baseball, and Thoroughbred Racing

by Daniel Illman

Time is running out for the *Pick The Pros* contest, and quite frankly I'm rather disappointed with the turnout. Frank Majinovich of Student Life has the current lead, and will win the two tickets to a Miami Heat game of his choice, if no one can eject him from the top spot.

Come on, people! I know the Heat stink, but this is the only game in town. I won't mind mentioning that if it weren't for our Student Communication Organization Morality Code, I'd be eligible, and way out in front.

Remember the rules: I need four weeks of selections with the spread posted in the local papers on the Friday before the games. The playoffs have been included.

On the home front, three cheers to Miranda Carberry of the Lady Knights Cross-Country Team. For the second year in a row, she competed in the NAIA National Championships, this year held in Kenosha, Wisconsin after a second place finish in the 3.1 mile in the FSC Cross-Conference Championships.

Congrats to Scott Vrabel, who did an outstanding job as guest on an FM sports-talk show awhile back. Hank Goldberg, watch out!

Quickly, some quips on the world of professional sports. Is it me, or will Jose Canseco hit 60 homeruns in Fenway Park, if they ever play that game again? You know—the one with the bat?

Yes, Darryl Strawberry is in trouble again. This time, for tax evasion. Anyone want his '87 Donruss, cheap?

Who is more boring in the heavy-weight division: George Foreman, Riddick Bowe, or Lawton Chiles? Foreman consequently will defend his championship against Tony Tucker in an attempt to find a cure for insomnia. I'd rather watch Big George in a pie-eating contest.

Is this the year for the Orlando Magic in the NBA? With Shaq, Hardaway, and Nick Anderson, the wand-wavers might have the best young talent in the league.

You heard it here first: Phoenix takes Orlando in seven.

Dennis Rodman has a real problem. The colorful superstar was recently suspended for one of his infamous no-shows. Santa should take back the shoes.

Whether the New York Giants make the playoffs or not doesn't make a difference. They still give me ulcers.

A word of advice to Dan Reeves: It's not good when the other team, the fans in the nosebleed seats, a national television audience, and my 85-year old Aunt knows what every first play from scrimmage will be. Hand-off to Hampton for two.

Florida-breds did rather well for themselves in the Breeders' Cup, Thoroughbred Racing's ten million dollar championship. Cherokee Run and jockey Mike Smith took home the lion's share of the million dollar purse in the Sprint as the betting favorite, while One Dreamer went gate-to-wire in the Distaff at 47-1 for breeder/

See NOTABLES on page 12

AMSTERDAM

\$ 1 9 4

Book NOW space is limited.

BRUSSELS	\$228
MADRID	\$275
ISTANBUL	\$298
BOGOTA	\$149
SAN JOSE C.R.	\$129
TOKYO	\$399

Fares are each way based on a round trip purchase from Miami. Student or Faculty ID may be required. Restrictions apply. Taxes & surcharges not included. Fares subject to change.

FREE "Student Travels" magazine!

ONE DATRAN CTR., #320,
9100 S. DADELAND BLVD, MIAMI, FL 33156

(305) 670-9261

Lady Knights Fall in NAIA Regional

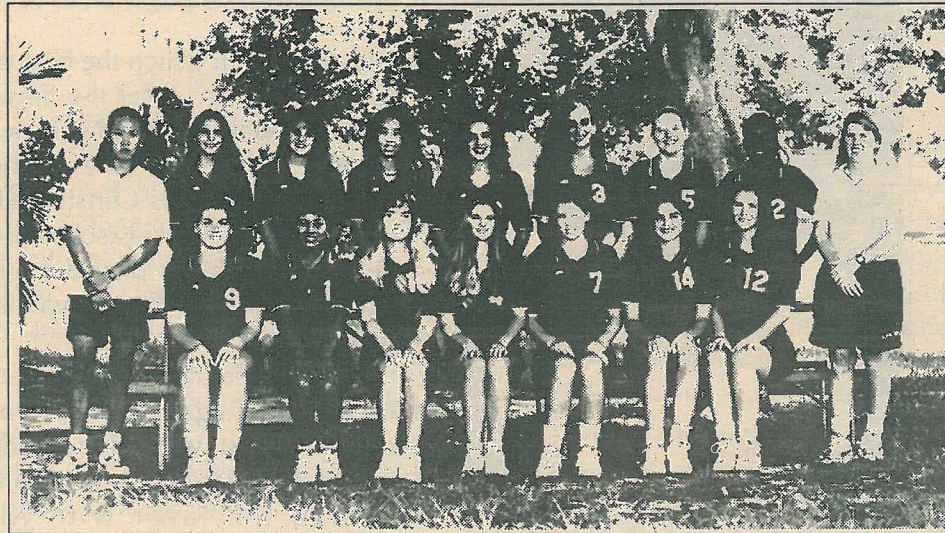
by Daniel Illman

The Lady Knights of Nova Southeastern deserve a resounding standing ovation for their efforts in the 1994 season. Ending the year with a 30-10 mark, the champions of the Florida Sun Conference finally were defeated by Montevallo University of Alabama in four games in the NAIA Regional Final.

After an undefeated FSC record of 17-0, the Lady Knights entered the regionals to face Palm Beach Atlantic University in the semi-finals. Nova toyed with the Lady Sailfish for the third time this season, to earn a berth in the finals against Montevallo, who earlier overpowered Southern Wesleyan.

Montevallo, led by the 6'2 sophomore Markata Campbell, and the 5'11 freshman Chris Pittman proved to be too powerful for the Lady Knights, although a raucous crowd at the Gloria Dei Gymnasium stood stoutly against the Alabamians.

The visitors took the first two games on the strength of Campbell



The Lady Knights volleyball team. Photo courtesy Athletic Department.

and Pittman in the middle. While Sherri Waddell and Thelma White being held in restraint, the powerful outside hitting of All-American Vanessa Gutierrez, Jennifer St. Thomas, and Anni Palacio were kept in check by the Montevallo backline.

Then, for one glorious game, it all came together. The Lady Knights were poetry in motion, with Waddell smashing winners from her middle-blocking position, and Gutierrez and

company finding holes in the defense.

It was, for a brief moment, a chance to show the people how good a team they were in 1994. The 15-4 score at the end of Game Three had some onlookers quoting fans of the 1969 Miracle Mets. "Ya gotta believe."

And then, just like that, Montevallo regained their composure

See **VOLLEYBALL** on page 12

Sports

Soccer Squad Squashed In Semi-Finals

by Daniel Illman

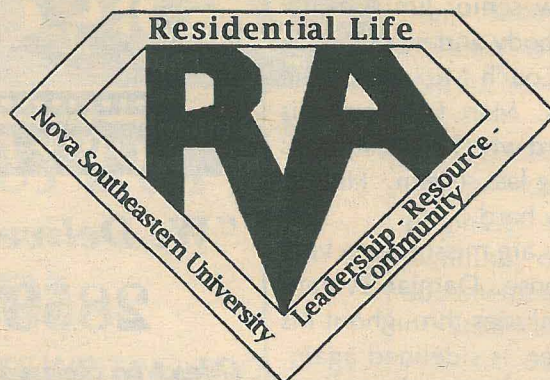
The Nova Men's Soccer team ended its 1994 schedule with a loss in the Florida Sun Conference semi-finals to arch-rival St. Thomas, 4-3, on November the third to finalize their record at 7-8-2. The Knights had defeated St. Thomas in a tantalizing 1-0 match at the Physical Plant on September 21.

Coach Thomas Rongen has to be disappointed in the boys' lackluster play down the stretch. The Knights owned a record of 6-2 after they downed Webber College in early October, but only won once in their last nine.

Nova Southeastern ended its regular season with three non-conference

See **SOCCKER** on page 12

BECOME PART OF A SUPER TEAM!



BECOME A RESIDENT ADVISOR!!!

Resident Advisor (RA) applications for the 1995-96 academic year are available ONLY at the following RA Information Sessions:

Wednesday, January 18 at 8:00 pm*
Thursday, January 19 at 8:00 pm*
Sunday, January 22 at 8:00 pm*
Tuesday, January 24 at 8:00 pm*

*All RA Information Sessions
are located in Goodwin
Residence Hall Classroom.

For more information, please contact Rick Mayfield, Assistant Director for Residential Life at 475-7052.

Sports

Volleyball

Continued from page 11

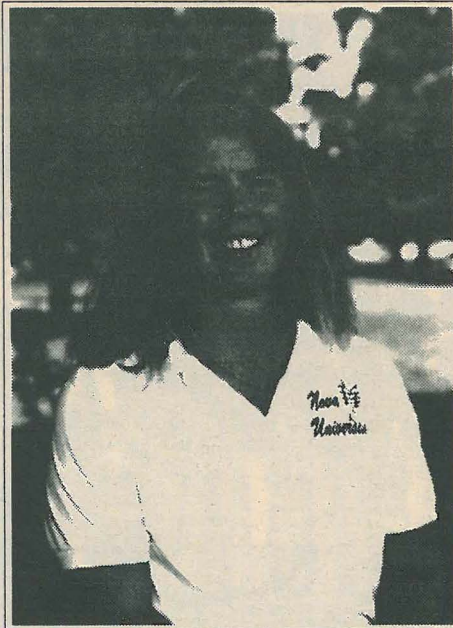
and in a business-like fashion, professionally dismissed the Lady Knights.

With their 1994 campaign snuffed out like a candle, the Knights must look to 1995 with even higher hopes.

Gutierrez and Waddell, one-two in the FSC Player of the Year voting will be back along with White, Palacio, setter Leslie Romero, and a slew of young players hungry for a chance to prove themselves.

The Lady Knights will also have to adapt to a new coach as well as Pegie Moran (60-19) has been discharged by the University. (For more on this story, see the next issue of The Knight Newspaper).

I would like to take this opportunity, as a humble rookie writer and



Pegie Moran, ex-coach of the Lady Knights. See next issue for a Moran focus. Photo courtesy Athletic Department.

broadcaster, to thank the Lady Knights for a season of thrills and chills.

Besides being outstanding on the volleyball court, they always took time to help out this neophyte with interviews and the like. *Thank you, ladies!*

Washington and Farias in Knights Basketball Action

Continued from page 10

games. In fact, he was blanked by Edward Waters at home.

Transfer student Kofi Bass and James Johnson are both six feet six inches tall but play very different games. Bass, the second leading all-time scorer in San Bernadino Community College history, is an extremely talented athlete, with panther-like agility, who can score from anywhere on the floor.

Johnson, a well-defined 225-pounder who could intimidate Riddick Bowe, much less any other center in the conference, likes to mix it up with the tall timber in the middle. James played forward for the Knights last season and led the team in field-goal percentage. A powerful presence who bangs the boards with the best, Johnson is needed to stay out of foul-

trouble, and on the court.

Nova Southeastern also has a very solid bench. Sophomore Derek Francis showed signs that he can run the club when Washington needs a rest. Southpaw senior Jim Amstutz provides a big body and nice outside touch to give Coach Michaels some quality minutes. Marc Farquarson is a streaky forward who led the Knights in blocks during last season. He hits the boards very hard.

The Knights are missing one vital cog in their offense. Damian Everett, plagued with injuries throughout his collegiate career, is sidelined again. If Everett returns at 100%, the Knights could contend.

While National Championship aspirations should be locked away until further notice, Nova should contend strongly for the Florida Sun Conference Title.

"Notables and Quotables"

Continued from page 10

owner Leonard Lavin.

Florida-bred Holy Bull will be named Horse of the Year at the Eclipse Awards after a stellar season, winning the Florida Derby, Blue Grass Stakes, Dwyer Stakes, Metropolitan Mile,

Travers Stakes, and the Woodward Stakes. The real happy news is that he'll be back to compete as a four-year old making his debut at Gulfstream Park in Hallandale.

It was a good semester for sports. See ya at the eighth pole.

Men's Soccer Season Ends

Continued from page 11

away contests in which the best they could do was tie. After the draw at Barry University, the Knights were defeated 3-2 at West Texas University, and 4-3 at Texas Christian University before their season-ending defeat. The Knights played well in all of these contests, but the win kept eluding them.

Six hundred strong came out to root on Nova against St. Thomas. Nova struck first, with Eddy Mendez' unassisted tally at 11:53. St. Thomas returned the favor with Alex Hernandez' goal at 18:30. The Bobcats opened up the advantage to 3-1

after goals by Mike Nicol, and Sheikh N'dure.

N'dure's penalty shot proved to be a major factor in St. Thomas' victory, as infractions have cost the Knights in the past. Gus Bravo scored at the sixty-nine minute mark, but St. Thomas regained the two-score advantage when Freddy Velez booted the game-winner ten minutes later. A late goal by Anthony DelleDonne was too little, too late for Nova Southeastern.

Eddy Mendez led the Knights in scoring for the season with seven goals and four assists. Warren Bloise had seven scores and two assists. The key blow to the Knights' season was the loss of Brian Hamilton to injury early in the year. Hamilton's two goals were both clutch, game-winners.

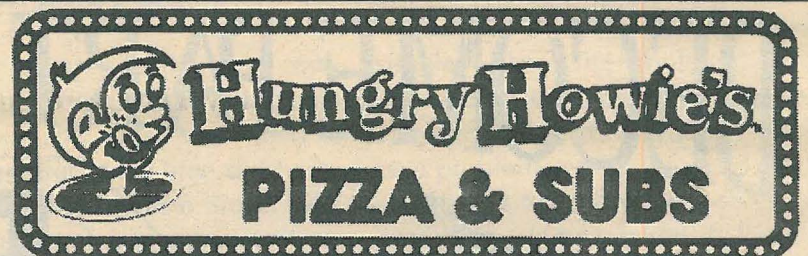
Although the Knights were erratic in 1994, they are a young club on the rise, who will be a force to be reckoned with in the years to come. They must control their temper on the field though, as their six red cards, combined with one from their opponents hurt them in their bid for glory.

January Knights Basketball Action WNSU Broadcast Schedule

courtesy Henry "H.B." Blaufeld

Date	Day	Time	Opponent
17 Jan	TUE	7:30 PM	Florida Memorial College *
28 Jan	SAT	7:30 PM	St. Thomas University *

* Florida Sun Conference and NAIA District 7 game



NOW 2 LOCATIONS TO SERVE YOU

"We Deliver" — 472-6202 - Davie

2853 S. University Dr.

(Next to Scandinavian • The Shoppes of Rolling Hills)

4599 N. University Dr. • 572-6807 - Lauderhill

(Sunvillage Plaza • South of 50th St.)

OPEN FOR LUNCH Monday thru Sunday

HOURS:

Sat. - Thurs. 11 a.m. - 11 p.m. Friday 11 a.m. - 1 a.m.

Howie Wings
\$4.59

10 deliciously seasoned Chicken Wings, Celery, Bleu Cheese Dressing & Spicy Howie Sticks.

Baked Spaghetti for 2
\$5.95

STUDENT SPECIAL

\$4.99

Lg. Cheese Pizza with 1 Topping
Pick Up Only. Expires 1/31/95

WNSU DJ Listening Lists

courtesy Brady Decker

Greg Brady's Top Five

1. Ruby Uroom / Soul Coughing
2. One Step Ahead of the Spider / MC 900 FT Jesus
3. Rubberneck / The Toadies
4. Worst Case Scenario / Dews
5. Hungry for Stink / L7

Jen's Top Five

1. Nobody's Bleeding / Crash Basket
2. AKA Driver / They Might Be Giants
3. Big Problems / Corrosion of Conformity
4. Under the Milky Way / The Church
5. Crush With Eyeliner / R.E.M.

You can listen to Jen Birchfield Thursdays from 5-6 PM and Saturday called the "Locals Hour" from 5-6 PM.

Marty, "The Professor of Oldies," Christmas Top Five

1. Christmas (Baby Please Come Home) / Darlene Love
2. The Bells of St. Mark / Bob B. Sox and the Blue Jeans
3. I saw Mommy Kissing Santa Claus / Frankie Valli and the Four Seasons
4. Do You Hear What I Hear? / Bing Crosby
5. The Magi / Peter, Paul, and Mary

You can hear Marty, "The Professor of Oldies," Saturdays from 2-4 PM and his electronic and new age program on Sundays from 2-4 PM.

Radickal Rick's Top Five Albums of 1994

1. Green Day / Dookie
2. Offspring / Smash
3. Ace of Bass / The Sign
4. Stone Temple Pilots / Purple
5. Pearl Jam / VS

You can listen to RADICKAL Rick on Wednesdays from 4-6 PM.

Jess Cyphers' Show

1. Bringer of Death / Danzig
2. Where Violence Is Golden / The Electric Hellfire Club
3. Black Sabbath / Type O Negative
4. Children of the Grave / White Zombie
5. Supernaut / 1000 Homo DJs

Big Daddy Mitch's Top Sex Freestyle and Techno Trax

1. Love Technique / Illuminatus 2
2. You / Axodry
3. Body to Body / Bigod 20
4. Lessons in Love / Lords of Acid
5. I Won't Stop Loving You / C-Bank
6. Give Your Love to Me / TKA

You can hear Big Daddy Mitch Friday evenings from 8 to 10 PM.

The Editor's Listening List

1. American Dreaming / Dead Can Dance
2. How to Destroy Angels / Coil
3. Fall Apart / Death in June
4. Red Crescent Part Three / Muslimgauze
5. United '94 / Psychic TV

You can hear the Editor of The Knight broadcast introspective, trance-inducing music Friday afternoons from 2-4 PM.

The Mathematics Garden 2

courtesy Matthew He

1. The Barr triplets have an annoying habit. Whenever a question is asked of the three of them, two tell the truth and the third lies. When I asked them which of them was born last, they replied as follows:

Mary: Katie was born last.
Katie: I am the youngest.
Annie: Mary is the youngest.

Which of the Barr triplets was born last?

2. Helen Hurry shares a faculty office with three men: Sam Swift, Nick Nickelson, and Peter Perkins. One of the four teachers is a historian, another is a biologist, a third is a mathematician, and the fourth is a chemist.

According to the rumors that I heard when I was a student in the college, Professor Swift, who is the historian, and the biologist were fraternity brothers in college. The historian and the biologist were once legally married to each other. Professor Nickelson and the chemist are engaged to be married to each other. Helen and her boyfriend play tennis each week with the biologist and his wife. If exactly three of these four statements are true, what is each person's subject matter?

Answers to Garden 1:

1. U=1, C=5, A=7, N=2, D=6, O=3, T=9, H=8, I=0 and S=4. Other answers are possible.
2. $2 \times 2 \times 2 \times 2 \times 2 = 128$

Untitled

poetry by Jackie Luongo

A lizard tans on island sand,
what could he fear, if he spotted a man?
Tiny green feet cruise so fast
a hot speckled gullet is hoisted full mast.
Thank God made that reptile agile,
thrown rocks at his head marked it fragile.

"THE AUTOMOTIVE & TIRE SPECIALISTS"

KOVAC automotive

Present Your Student or Faculty ID Card for:
10% OFF All Service Work including Sale Items
15% OFF Auto Detailing, Window Tinting and Alarms
FREE Courtesy Van Ride to and from School

Oil Change, Chassis Lube,
\$15.95 Oil Filter
Drain Oil, fill up to 5 quarts
Kendall Motor Oil, Lubricate
Chassis and install New Filter.
Visit Vehicles

SAVE! Steel Belted Radial
All Season Whitewall
\$24.95
P155/80R13. Other Sizes at Comparable Savings

PREVENTATIVE MAINTENANCE
TUNE-UP SERVICE
\$34.95 4 CYL. **\$44.95** 6 CYL. **\$54.95** 8 CYL.
Most Cars - Electronic Ignition, Check Battery, Starting, Charging,
Combustion Systems, Install New Spark Plugs, Inspect Wires, Distributor
Cap, Rotor, PVC Valves, Coil and Crank Case Filter

COMPUTERIZED ALIGNMENT
\$29 2 Wheel **\$39** Thrust Angle (most vehicles) **\$49** 4 Wheel (most front wheel drive vehicles)
Limited warranty - 6 months or 6,000 miles,
whichever comes first. Additional parts & labor extra.

USED TIRES We Carry A Good Selection of Pre-Inspected Used Tires Starting As Low As **\$10.00**

GOODYEAR
All of our Technicians are certified by ASE
CERTIFIED AUTO SERVICE

KOVAC automotive

Davie AR1020 MV08726

4320 S.W. 64th Ave. (Davie Rd) 792-7357

Hollywood Location 981-2951 AR1785 MV08725

Weston Location 384-8473 AR1017 MV08727

HOURS Mon. Tues. Wed., Fri 7:30-8:00 - Thurs 7:30-7:00 - Sat 7:30-5:00

WE WELCOME CASH CHECKS, THE GOODYEAR CARD & ALL MAJOR CREDIT CARDS

Instant Credit Available

NOVA
SOUTHEASTERN
UNIVERSITY

Classified

Is it fair?

by Daniel Illman

I, Daniel Illman, being of sound mind and body the last time I checked, do accuse The Office of Residential Life for being unfair to offenders of the Residential Life Conduct Code.

On October 11, 1994, all residents of Goodwin Hall received a memo in the mail that went like this:

To: Goodwin Hall Residents
From: Tammy Pappacoda, Director of Residential Life
Re: Night Security

A disturbing incident occurred early this morning in Goodwin Residence Hall. At approximately 3:15 AM, human feces were ejected from the second or third floor balcony. The human feces fell onto the night security table, the floor, and the walls. This behavior is vile and will not be tolerated. Residents found responsible will be terminated from housing and receive further disciplinary sanctions.

Any resident who has any information about this incident should contact Residential Life immediately. It is important that you share in the responsibility of making Goodwin Residence Hall a safe, secure, and pleasant environment in which to live.

It's been over two months since this disgusting incident occurred, and yet, not one finger was pointed, no one was accosted, and life goes on. Perhaps it will take the sh— to hit the fan to make Residential Life sit up and take notice. There have been many whispers as to who did this act, and I have my suspicions as well, but all we know is that there was HUMAN feces present. Did they bring the X-Files crew to verify this?

More recently, an acquaintance of mine did not have his student identification and was denied entrance. After cursing at his fate, and a rather haughty RA, he was written up, and marched down in Gestapo fashion to the inner sanctum. Basically, my acquaintance was not happy and attempted to voice his concerns. Unfortunately

See **INCIDENT** on page 16

APA RESEARCH/ Freelance Writer

Reasonable Rates.
Computer typing
\$1 per page (ds)

Resumes \$5 per page.
Dr. C. Lipschitz (PhD).

**CALL 305-472-9990/
800-472-9994 (24 hours)**

EXCHANGE ROOM & BOARD FOR BABY-SITTING

&
ERRANDS
MAINLY BEFORE 9 YEAR
OLD BOY GOES OFF TO
SCHOOL (8 AM)
HAVE YOUR OWN ROOM IN
A SPACIOUS HOME IN THE
PEMBROKE PINES
CHAPEL TRAIL AREA
CALL ANETHA 438-4410

**NOVA SOUTHEASTERN
UNIVERSITY
BUSINESS & PROFESSIONAL
WOMEN'S
(STUDENT) ASSOCIATION**
CORDIALLY INVITES ALL
STUDENTS TO
A WELCOME BACK &
MEMBERSHIP COCKTAIL PARTY
Don't Miss The Opportunity Of A Lifetime
To Get Involved With A Vibrant
Organization With International Connections
& Network
Friday 20th January, 1995 7-9 pm
2nd Floor, School of Business &
Entrepreneurship.
Limited Accommodation. RSVP ONLY
Call 305-485-3415 to confirm

Upgrade Your Study Skills

Improve your memory,
study habits, and reduce test
anxiety through hypnosis.
\$175.00 includes 2 sessions and
1 customized audio tape.
Visa and Mastercard accepted.
**M. Estelle Spike M.A., M.S.,
Certified Hypnotherapist, Mental
Health Counselor Intern,
3595 Sheridan St. Suite 103
Hollywood, Fl. 33021
(305) 964-5257**

GET INVOLVED

Become an activist,
make a difference.

Join the Broward
County Young
Democrats. Student
Liaisons needed.

 Call Cory at  730-3716.

ATTENTION!!
**YOUR TERMS, DOCS, RESUMES,
DOCTORATES, ET AL COM-
PUTER TYPED STATE-OF-THE-
ART EQUIPMENT INK JET B&W
OR COLOR PRINTER YOUR
GRAPHS IMPORTED ONTO
YOUR COPY**
**FREE FLOPPY - 5 OR MORE
PRINTED PAGES HIGHLY
COMPETITIVE RATES! ELEC-
TRIC TYPING: SO. BROWARD/
DADE @ \$1.00 PAGE DETAILS:
FRANCINE MOMENT -
(305) 741-7276**

THE WRITE TOUCH

Professional Word Processing
WordPerfect 6.0 / LaserJet Printer
Manuscripts, Resumes,
Term Papers
No Job too Big or too Small
Very Reasonable Rates

Call **TERRI** at (305) 370-6199

START YOUR MANAGEMENT CAREER WITH THE NATION'S LEADING LAWN AND LANDSCAPE COMPANY!

- EXTENSIVE TRAINING PROGRAM
 - STARTING SALARY \$17K-\$20K
 - AVG. ANNUAL INCENTIVES \$4K- \$8K
 - POTENTIAL TO MAKE \$30K
 - MED./DENTAL/LIFE/401K
 - GAS REIMBURSEMENT
 - LEADS PROVIDED
 - SALES MANAGEMENT TRAINING
 - ADVANCEMENT OPPORTUNITIES
- INTERVIEWING & HIRING FOR
HOLLYWOOD & SUNRISE
OFFICE! START OUT AS
A RESIDENTIAL SALES REP. AND
MOVE INTO MANAGEMENT.**
**CALL STEVE KONRATH
BROWARD MARKETING
MANAGER @ 749-7274**

TRUGREEN • CHEMLAWN
10130 SPRINGTREE LAKE DR.
SUNRISE, FL 33351

Opinion

Environmental Symposium Dug Deep

Dear Editor,

I would like to address certain issues raised by Heidi Palmer's article, "Ecology Symposium Skimmed Controversial Surface," which appeared in the December 5, 1994 issue of *The Knight*.

The title of her article is more indicative of her reporting of the event than of the symposium itself. Perhaps it was due to space constraints, but she summed up the actual content of the conference in two short paragraphs.

The major issue that I want to address is Ms. Palmer's editorializing comment, "...this viewer would rather have seen more of a detailed discussion on how to 'save the environment' or 'why are we having trouble protecting the environment?'" In reply to this, I can only point out the obvious to anyone with any experience with moral decision making.

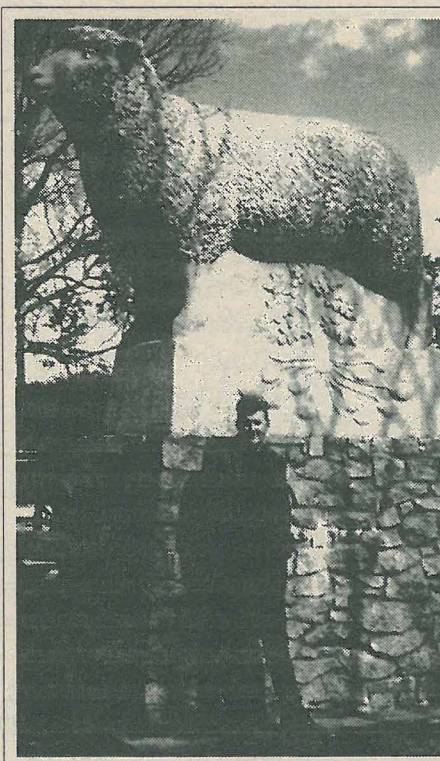
Before one can take any action of this magnitude, we must examine the

underlying moral issues in a rational manner.

The actual question debated was, "Ought the government protect the environment?" Two of the speakers, David McNaron and Robert Elliot, spoke from a direct ethical perspective. Joel Mintz, another speaker, spoke from the standpoint of the law. On this I agree with Ms. Palmer's article. However, that is far as she goes.

McNaron's position was that we have a responsibility to the moral subjects within the environment. He defined moral subjects as animals that displayed consciousness, exhibiting learned rather than programmed behavior.

Accordingly, while they have no direct "rights" in the ethical sense, which would make them moral agents, we still have an indirect obligation to preserve their living conditions. For environmental ethics, we have to take a system level approach to determine what we need to preserve. We need to determine how



Robert Elliot, of the Philosophy Department of the University of New England in South Wales, Australia. Photo courtesy Linda Gordon.

the moral subjects of a system interact with all around them, and preserve what they need to maintain a quality of life.

Dr. Mintz's position was that the public health must be preserved. The question to be dealt with there is what would best serve the public health? There are two sides to that sword. One side points out that many of the medicines in use today were discovered in the environment, rather than invented in the lab.

Further destruction of the environment could possibly destroy the cures to many of the ailments that presently plague man.

The other side points out that the level of technology that we have reached, as a result of moving forward

without regard to the environment, has improved the general public health. This sword edge is a jagged one, as the benefits of health technology are only improving the lives of the affluent.

Dr. Elliot's position was a unique one. He felt that the state should be involved in protecting the environment for reasons of justice.

He gave an example where two communities lived along the same river. The community that was upstream was dumping pollutants into the river, causing illness in the downstream community.

The state should get involved to represent the interests of justice, to correct the injustice done to the downstream community. He used another example that pointed out that we can only apply concepts of justice to our contemporaries. Trying to apply these standards to future generations would be futile. Different conditions would influence the attitudes of the future communities. These would be a product of the times in which they lived.

Ms. Palmer's attitude that we should have discussed how to save or preserve the environment is an elementary one, as is any view which concentrates on "how?"

Any person walking down the street can give you a coherent answer to the question of how to save the environment, and they would probably be correct.

The important question that we all need to discuss is "why?"

Respectfully,

David Nurbin, President, N.A.T.U.R.E.

NSU Spirit Dampened by Trailer Park, Lack of Facilities

by Francis G. Imbarlina

So much has happened at Nova Southeastern's main campus since August. That I thought it would be timely to write about some of the changes as we return to school in January. Let me apologize up front to those thin-

skinned individuals who are unable to look at themselves in the mirror.

Buildings and Trailers

As I walked out of the new Horvitz Administration Building, it occurred to me that maybe, if we didn't spend such a large sum of money on marble, red wood banis-

See RANDOM on page 16

Expo '95...

your

TICKET

to career success!!

Sponsored by the
Career Resource Center
(305)475-7504

The Career Expo will be held on
Wednesday, February 8th from 11:00
to 3:00 in the Rosenthal Cafeteria.

Contact the Career Resource Center
for information on participating
companies!

Don't let this opportunity pass you
by!

Random Thoughts

Random Thoughts: NSU's Growing Pains Too Much to Bear

continued from page 15

ters, and spiral staircases, we could have had a three-story building as originally intended?

I feel insulted for the teachers who still have offices in the trailers. While administrative "paper pushers" enjoy beautiful accommodations, some of the finest instructors I've ever known have grown fearful.

Rumor has it that many university employees who work in the trailers have developed an intense phobia. Apparently they find themselves unable to work in a trailer during a lightning storm.

Can you blame them? Let me get to the point: no matter how many groundbreaking ceremonies NSU has, the average undergrad attends classes in a trailer park! It makes me wonder what the administration is doing with all its money.

School Spirit

Anyone who has been on campus for at least a semester realizes that the phrases "school spirit" and "Nova Southeastern" should never appear in the same sentence.

It is my contention that there is a direct correlation between the aforementioned "trailer park" and the utter void of NSU spirit.

Usually school spirit revolves around campus athletic events. So what's the problem here?

Is it the tremendous volume of on-campus activities? Is it the lavish Student Recreation Area? The hot fraternity parties? The lack of mobility

the average student experiences after a DAKA cafeteria meal?

No, everyone must be skinny-dipping in NSU's new pool! (Could you see Novalert? "Excuse me miss, Please, put your thong back on.")

The obvious problem is we do not have an on-campus, student recreational facility.

Perhaps an on-campus sports & recreation facility makes *too much* sense. Am I the only one who envisions a facility where everyone with an NSU ID card could conveniently work out (shoot hoops, lift weights, do Stairmaster, play racquetball, attend an aerobics class), shower, and return to work or school?

Then, come May when the undergrad college, the Law Center, and the Schools of Psych and Business are gearing up to rent (\$) venues for graduation, they could utilize their own—you know, like a *real* university. The Knights Volleyball and Basketball teams would never play in front of 10 or 20 people ever again (and that's on a good Knight—pun intended).

Then, *the strangest thing would happen*. The surrounding community, bored with rodeo after rodeo, would pay \$\$\$ to see our teams compete (something they all do very well). The locals might even pay to attend cultural events, such as concerts and our student plays by The Nova Players.

This new attitude would not only improve NSU's profile in Broward County; an on-campus, recreational facility could operate in the black and

might eventually pay for itself.

Granted, getting those poor folks out of those trailers before the Big Twister hits, and building a *real* library in the Parker Building should be our top priority. But at our rapid pace of growth, let's see blueprints for something we can use!

Well, my time's up. If you have any suggestions for future topics, drop me a note in *The Knight Newspaper's* mail box on the first floor of the Rosenthal Student Center at NSU's main campus.

Hope you're looking forward to hitting the books and I'll try my best to cover the controversial topics guaranteed to piss some people off, including: What is a commuter liaison and does one really exist (and get paid!)? Why did NSU's DAKA food service raise the price of machine-dispensed sodas to 65 cents? (not making enough money already?) and Why does one coach win the "Coach of the Year" award, 30 matches, and the Florida Sun Conference title, only to be fired after two immensely successful seasons while another coach is in

African Celebration of Life: Kwanzaa

Continued from page 6

ness. It gives an escape from the oversensationalized holiday that Christmas has become.

I found out about Kwanzaa last year from a cousin who started practicing the celebration. I too will begin to celebrate Kwanzaa with my family.

The workshop gave me all the information I needed to begin my celebration. Cleveland also noted that we as families and individuals can celebrate Kwanzaa each day, because all the principles of the celebration are present in everyday life.

his eighth undistinguished year, has never had a season better than 16-18, wins about 35% of the games, and treats the players like unwanted stepchildren, yet continually has his contract renewed?

I think my next column will be titled: *Earth to Athletic Council: Do You Read Me?* (As always, pun intended). Till next time—Peace.

Incident at Goodwin Hall

Continued from page 14

for him, he raised his voice during the meeting.

Of course, "It is important that we all share in the responsibility of making Goodwin Residence Hall a safe, secure, and pleasant environment in which to live." Yelling is prohibited, although feces-throwing will probably be an Olympic event by the time Nova becomes an Olympic Village.

My acquaintance was told that perhaps he should go to the Wellness Center. This is a rather obvious attempt to humiliate the poor student, by saying without saying, that, "You

are unstable, therefore crazy, and you need psychiatric help." Rather harsh, don't you think?

Heck, I don't condone it, but at times, we all want to curse out authority figures. And what is worse? A "bleep you, you bleeping bleep," or getting dumped on the head with human feces?

How about the punishment fitting the crime?

All of us at Goodwin live with the spores, mold, and assorted fungi that houses with us. All of us live with drunken disorderlies yelling obscenities during "quiet hours." Tone down on everyone, or no one at all. *It would only be fair.*

great scores...



Kaplan helps you focus your test prep study where you need it most. We'll show you the proven skills and test-taking techniques that help you get a higher score.

great skills...

Kaplan has the most complete arsenal of test prep tools available. From videos to software to virtual reality practice tests with computerized analysis to great teachers who really care, nobody offers you more ways to practice.

Call: 370-2500

get a higher score
KAPLAN