

1-8-2018

Is there a link between aging and microbiome diversity in exceptional mammalian longevity?

Graham M. Hughes
University College Dublin

John Leech
University College Cork

Sébastien J. Puechmaille
University College Dublin; Zoology Institute

Jose V. Lopez
Nova Southeastern University, joslo@nova.edu

Emma C. Teeling
University College Dublin

Find out more information about [Nova Southeastern University](#) and the [Halmos College of Natural Sciences and Oceanography](#).

Follow this and additional works at: https://nsuworks.nova.edu/occ_facarticles

 Part of the [Marine Biology Commons](#)

NSUWorks Citation

Graham M. Hughes, John Leech, Sébastien J. Puechmaille, Jose V. Lopez, and Emma C. Teeling. 2018. Is there a link between aging and microbiome diversity in exceptional mammalian longevity? .PeerJ – the Journal of Life & Environmental Sciences : e4174 . https://nsuworks.nova.edu/occ_facarticles/1369.

This Article is brought to you for free and open access by the Department of Marine and Environmental Sciences at NSUWorks. It has been accepted for inclusion in Marine & Environmental Sciences Faculty Articles by an authorized administrator of NSUWorks. For more information, please contact nsuworks@nova.edu.

Is there a link between aging and microbiome diversity in exceptional mammalian longevity?

Graham M. Hughes¹, John Leech², Sébastien J. Puechmaile^{1,3}, Jose V. Lopez⁴ and Emma C. Teeling¹

¹School of Biology and Environmental Science, University College Dublin, Dublin, Ireland

²APC Microbiome Institute, University College Cork, Cork, Ireland

³Zoology Institute, Greifswald, Germany

⁴Halmos College of Natural Sciences and Oceanography, Nova Southeastern University, Dania Beach, FL, United States of America

ABSTRACT

A changing microbiome has been linked to biological aging in mice and humans, suggesting a possible role of gut flora in pathogenic aging phenotypes. Many bat species have exceptional longevity given their body size and some can live up to ten times longer than expected with little signs of aging. This study explores the anal microbiome of the exceptionally long-lived *Myotis myotis* bat, investigating bacterial composition in both adult and juvenile bats to determine if the microbiome changes with age in a wild, long-lived non-model organism, using non-lethal sampling. The anal microbiome was sequenced using metabarcoding in more than 50 individuals, finding no significant difference between the composition of juvenile and adult bats, suggesting that age-related microbial shifts previously observed in other mammals may not be present in *Myotis myotis*. Functional gene categories, inferred from metabarcoding data, expressed in the *M. myotis* microbiome were categorized identifying pathways involved in metabolism, DNA repair and oxidative phosphorylation. We highlight an abundance of 'Proteobacteria' relative to other mammals, with similar patterns compared to other bat microbiomes. Our results suggest that *M. myotis* may have a relatively stable, unchanging microbiome playing a role in their extended 'health spans' with the advancement of age, and suggest a potential link between microbiome and sustained, powered flight.

Submitted 2 August 2017

Accepted 29 November 2017

Published 8 January 2018

Corresponding author

Emma C. Teeling,
emma.teeling@ucd.ie

Academic editor

Hauke Smidt

Additional Information and
Declarations can be found on
page 15

DOI 10.7717/peerj.4174

© Copyright
2018 Hughes et al.

Distributed under
Creative Commons CC-BY 4.0

OPEN ACCESS

Subjects Evolutionary Studies, Microbiology, Zoology

Keywords Microbiome, Aging, Bats, *Myotis myotis*, Metabolism, Proteobacteria, Comparative Biology

INTRODUCTION

The importance of the gut microbiome, the collection of microflora or microbiota inhabiting various regions of the gastro-intestinal tract, has become apparent in recent years. It is known to facilitate the fermentation of nutrients, such as carbohydrates, into short chain fatty acids (e.g., butyrate) for use by the host (*Flint et al., 2012*). Many vitamins are also synthesized by the microbiome such as vitamin B7, B12 and Vitamin A, which may be otherwise unavailable (*O'Hara & Shanahan, 2006*). In addition to nutrition,

more evidence is accumulating pointing to “microbiome-wide associations” with health and disease in humans and other hosts ([Gilbert et al., 2016](#)), and the composition of the mammalian gut microbiome has been linked to the process of biological aging ([Biagi et al., 2016](#); [Mello et al., 2016](#)). Aging is characterized by the progressive decline of function, increased frailty and an increase in chronic disease ([López-Otín et al., 2013](#)). Studies of the human microbiome have reported shifts in microbial composition across different stages of life, with a high degree of variability at the two extremes of infancy and old age ([Saraswati & Sitaraman, 2015](#)). A shift from a microbiome that deals exclusively with breast milk in nursing infants to a more diverse microbiome that can metabolize a wider range of nutrition ([Yatsunenko et al., 2012](#)) is observed in early to middle stages of life. In later life, a reduction of lactobacilli and an increase of potentially pathogenic *Enterobacteriaceae* have been observed in frail individuals ([Van Tongeren et al., 2005](#)). This accumulation of pathogenic flora has been associated with a range of clinical problems such as infection, cancer and deficiencies in immune response ([Atarashi et al., 2013](#); [Saraswati & Sitaraman, 2015](#)). Similar microbial shifts are observed in mice, such as the decrease in bacteria that synthesize vitamin B12 in older age cohorts, leading to overall changes in microbiome composition and function in age related frailty ([Langille et al., 2014](#)) implying a general trend in the aging gut. The question of whether or not such microbial shifts are a symptom rather than a driver of aging has yet to be conclusively answered.

Bats are exceptional mammals not only because of their capability of powered flight but also due to the diverse range of life histories they exhibit, with exceptional longevity being of particular interest ([Austad, 2010](#)). Within bats, a number of species in the family Vespertilionidae demonstrate extreme longevity, living up to ten times longer than expected given their body size ([Austad, 2010](#); [Shen et al., 2010](#)). Surviving in the wild requires maintaining agility; speed and high frequency hearing to capture prey on a daily basis. Therefore, a long lifespan in bats coincides with a long health-span. Elucidating the changes that occur in microbial composition over time in these exceptionally long-lived organisms will shed light on the role of the microbiome in extended health-spans. While previous studies of bat microbiomes have focused on the effects of phylogeny and diet, this is the first bat microbiome study to focus on aging.

In this study, we have used DNA metabarcoding of the 16S rRNA gene and high-throughput sequencing to characterize the structure and function of the anal microbiome from 52 wild, exceptionally long-lived insectivorous *Myotis myotis* bats (maximum lifespan (MLS) 37 years [Gaisler et al., 2003](#)) using a non-lethal sampling method. *M. myotis* makes an ideal comparison to current mouse microbiome models as these bats are similar in body size but can live up to 32 years longer. We show that there is no obvious shift in bacterial composition between juvenile and the early stages of adulthood in *M. myotis*, as has been observed in other mammals. We find that the highest number of pathways expressed in bat metagenomes are involved in metabolism, energy consumption, DNA repair and oxidative phosphorylation, all reactions that may play a role in the use of powered flight and aging, suggesting a potential interaction between long-term microbiome stability, lifespan and powered flight. A microbiome that does not change over time may have profound effects on age-related infections and immune deficiencies, opening up new avenues of microbiome

research in non-model organisms. Finally, we compare the relative abundance of major bacterial phyla in *M. myotis* with those of other bats and mammals, highlighting the high abundance of ‘Proteobacteria’ in Chiroptera relative to other mammals.

MATERIALS AND METHODS

Sample collection

All field procedures were carried out in accordance with the ethical guidelines and permits delivered by ‘Arrêté’ by the Préfet du Morbihan, Bretagne awarded to Eric Petit, Frédéric Touzalin and Sébastien Puechmaille for the time period 15 June–15 September 2013–2017. Full ethics approval and permission (AREC-13-38-Teeling) for capture and field sampling was awarded by the University College Dublin ethics committee. *M. myotis* were sampled in western France, (Brittany), July 2013, from four large roost locations: Béganne (Beg), Férel (Fer), La Roche-Bernard (LRB) and Noyal-Muzillac (NM). The maximum distance between any of the four sites is roughly 24 km. Bats were caught in custom harp traps while leaving their roost (hence typically before foraging/feeding) and were initially placed in individual cloth bags (Huang *et al.*, 2016). Each bat was identified by a unique transponder inserted under the skin when the bat was first captured. If captured and transponded as a juvenile ($\sim < 6$ weeks old), indicated by the lack of fused finger bones, the exact age at recapture was known. Validated weaning status could not be determined for juvenile bats, however the sampled juveniles were capable of flight, suggesting that the majority were partially weaned, but opportunistic suckling cannot be ruled out. If caught and transponded for the first time as an adult, years since first capture was noted and a plus sign indicated the individual was older than age estimated from first capture. For each bat, a Copan FLOQSwab™ swab was gently inserted into the anus and removed. The swab was then placed into an Eppendorf and immediately flash frozen in liquid nitrogen. Swabs were subsequently placed in ethanol during transport for sequencing.

Categorical datasets

Sample age cohorts ranged from ‘0 years’ to ‘4+ years’, with individuals whose exact age was unknown but minimum age could be determined denoted by ‘+’. To investigate differences in anal flora between juvenile and adult bats, samples were categorized into a number of age data sets. Age dataset 1 contained known ages only ($n = 29$). When comparing adults and definitive juveniles, age dataset 2 categorized bats that were 1 or more years old as adults ($n = 33$), while 0 year olds were considered juvenile ($n = 19$). In age dataset 3, the cut-off for juvenile was increased from 0 to 1 year (juvenile $n = 27$), to investigate if the microbiome of a 1 year old *M. myotis* bat transitioning from juvenile to adult had an influence on any age associated microbial shifts that might be observed. For age dataset 3, ‘1+’ individuals were excluded. Finally, age dataset 4 contained all ages as individual categories (Table 1). Juvenile to adult age ranges cover the entire lifespan of a mouse or similar sized mammal (0–4 years). In addition to age, bat samples were categorized based on gender and location of collection (sample site was not catalogued for two individuals, MMY247 and MMY51, which were instead referred to as ‘site undefined’).

Table 1 Sample information. Sample (MMY + sample number) metadata describing different numerical and categorical variables are displayed. The number of reads sequenced for each sample, and subsequent alpha diversity measures (PD Whole tree and observed OTUs) are counted. Age datasets were used to compare individual ages and to compare juveniles and adults.

#Sample ID	Sex	Age dataset 1	Age dataset 2	Age dataset 3	Age dataset 4	Site	# Reads	PD whole tree	Observed OTUs
MMY1028	F	0	Juvenile	Juvenile	0	LRB	75,913	7.81	77
MMY144	F	NA	Adult	Adult	4+	Beg	30,005	25.03	242
MMY18	M	NA	Adult	NA	1+	LRB	136,568	28.16	421
MMY19	M	NA	Adult	NA	1+	LRB	243	26.59	352
MMY21	F	NA	Adult	Adult	2+	LRB	684	29.75	446
MMY230	F	3	Adult	Adult	3	Fer	43,623	15.28	184
MMY231	M	NA	Adult	Adult	3+	Fer	1911	17.65	183
MMY233	F	NA	Adult	Adult	3+	Fer	52,169	18.68	289
MMY247	F	NA	Adult	Adult	4+	Site undefined	58,855	25.07	322
MMY272	F	1	Adult	Juvenile	1	Fer	275	31.98	470
MMY329	F	1	Adult	Juvenile	1	Fer	140,485	33.53	411
MMY332	M	0	Juvenile	Juvenile	0	Fer	97	17.14	182
MMY387	M	NA	Adult	Adult	2+	NM	107,414	36.85	560
MMY388	F	NA	Adult	NA	1+	NM	104,612	19.21	280
MMY391	M	NA	Adult	Adult	2+	NM	42,732	10.92	114
MMY51	F	NA	Adult	NA	1+	Site undefined	66,819	7.61	103
MMY519	F	NA	Adult	NA	1+	NM	49,322	30.86	489
MMY52	F	NA	Adult	NA	1+	LRB	10,971	15.55	141
MMY524	M	1	Adult	Juvenile	1	NM	52,755	22.97	313
MMY540	F	NA	Adult	NA	1+	NM	586	32.86	441
MMY573	F	NA	Adult	Adult	4+	Beg	134	27.65	350
MMY583	F	0	Juvenile	Juvenile	0	Beg	76,738	23.03	368
MMY589	F	0	Juvenile	Juvenile	0	Beg	128,039	21.09	179
MMY729	M	1	Adult	Juvenile	1	Fer	85,598	15.35	213
MMY730	F	1	Adult	Juvenile	1	Fer	165,854	14.01	108
MMY731	F	NA	Adult	Adult	2+	Fer	305	23.40	315
MMY732	F	NA	Adult	Adult	3+	Fer	1,173	10.60	136
MMY736	M	3	Adult	Adult	3	Fer	52	30.48	428
MMY750	M	NA	Adult	NA	1+	Fer	46,504	7.55	163
MMY780	F	0	Juvenile	Juvenile	0	NM	34,536	27.65	399
MMY781	M	0	Juvenile	Juvenile	0	NM	44,487	18.57	165
MMY808	M	NA	Adult	Adult	2+	NM	79,976	38.83	554
MMY810	M	NA	Adult	Adult	2+	NM	498	17.23	202
MMY835	M	1	Adult	Juvenile	1	LRB	91,311	9.32	84
MMY840	M	NA	Adult	Adult	2+	LRB	55,681	10.791	137
MMY841	F	0	Juvenile	Juvenile	0	LRB	44,925	20.93	267
MMY860	F	1	Adult	Juvenile	1	NM	39,929	26.58	361

(continued on next page)

Table 1 (continued)

#Sample ID	Sex	Age dataset 1	Age dataset 2	Age dataset 3	Age dataset 4	Site	# Reads	PD whole tree	Observed OTUs
MMY863	M	0	Juvenile	Juvenile	0	NM	106,015	21.11	312
MMY864	F	NA	Adult	Adult	2+	NM	9,608	25.91	302
MMY865	M	0	Juvenile	Juvenile	0	NM	62,705	25.22	353
MMY883	F	0	Juvenile	Juvenile	0	NM	59,037	47.05	747
MMY887	F	0	Juvenile	Juvenile	0	LRB	99,393	7.81	77
MMY893	F	NA	Adult	NA	1+	NM	56,760	25.03	242
MMY894	M	0	Juvenile	Juvenile	0	NM	82,872	28.16	421
MMY930	M	0	Juvenile	Juvenile	0	LRB	83,416	26.59	352
MMY932	M	0	Juvenile	Juvenile	0	LRB	191,120	29.75	446
MMY937	M	1	Adult	Juvenile	1	NM	12,983	15.28	184
MMY942	M	0	Juvenile	Juvenile	0	NM	60,449	17.65	183
MMY943	F	0	Juvenile	Juvenile	0	NM	15,264	18.68	289
MMY946	F	0	Juvenile	Juvenile	0	NM	118,085	25.07	322
MMY987	M	0	Juvenile	Juvenile	0	NM	25,295	31.98	470
MMY990	F	0	Juvenile	Juvenile	0	NM	93,196	33.53	411

16S rRNA library preparation and sequencing

Total microbial genomic DNA from each swab sample was extracted using MO BIO's PowerLyzer™ PowerSoil® kit, following Earth Microbiome (<http://earthmicrobiome.org>) standards and recommendations. Following extractions, DNA quality was checked via agarose gel electrophoresis. Purity of the 16S rRNA amplicons after adding barcodes was determined via a 2200 TapeStation Bioanalyzer (Agilent Technologies, Santa Clara, CA, USA), while quantity of each DNA (4 pM of each sample) was measured with a Qubit 2.0 flourometer (Life Technologies, Carlsbad, CA, USA) prior to each MiSeq run. The protocol detailed in *Caporaso et al. (2012)*, using the V4 hyper-variable region primers 515F/806R for paired-end 16S rRNA sequencing was strictly followed.

Libraries were generated for all 52 samples using the Illumina Nextera XT dual primer protocol and 16S metagenomic library prep guide. Blank extractions containing no DNA, and tested with barcoded and non-barcoded index primers, were used as a negative control to investigate potential contamination during laboratory procedures. Samples were sequenced using the MiSeq platform and 250bp paired end chemistry. Taxonomic analysis was carried out using the Quantitative Insights into Microbial Ecology (QIIME) suite of software, version 1.9.1 (*Caporaso et al., 2010*). Paired end reads were filtered using a phred score threshold of 30, and chimeric sequences were removed using the QIIME 'split_libraries_fastq.py' and 'filter_fastq.py' scripts. Reads from each sample were then overlapped, joining the forward and reverse reads, using the fastq-join method as implemented in QIIME.

OTU Picking and diversity analyses

Overlapped sequences from each bat sample were used for Operational Taxonomic Unit (OTU) picking. OTU picking involves the process of aligning sequences found in each sample to a reference database and assigning them to an OTU (a cluster of similar reads

representing a bacterial phyla, genera or species, depending on level of resolution). For this study, the Greengenes annotated 16S reference database (DeSantis *et al.*, 2006) and PyNast aligner was used, with a minimum sequence clustering identity of 97% (Caporaso *et al.*, 2010). Greengenes was chosen as our reference database as it has been previously used to characterize other bat microbiomes, which are included in our study (Phillips *et al.*, 2012; Carrillo-Araujo *et al.*, 2015). The method of ‘open OTU picking’, where reads that do not map to a reference database are subsequently clustered *de novo*, was applied.

The mean OTU abundance within each sample was calculated as alpha diversity in QIIME. Samples were rarefied to 8,000 reads, removing possible biases introduced due to uneven sequencing depth, using the ‘*core_diversity_analysis.py*’ script, with parameter ‘-e’ set to 8,000. This minimum was chosen to include as many samples as possible while also providing enough depth to get a good representation of the microbiome. Despite potentially reduced statistical power (McMurdie & Holmes, 2014), rarefaction was chosen as the ideal means of data normalization given the range of reads across samples (Weiss *et al.*, 2017), resulting in abundances comparable to other mammalian microbiomes (see below). A change in alpha diversity has previously been used to differentiate between young, mature and old mammals (Yatsunenko *et al.*, 2012; Frese *et al.*, 2015), hence alpha-diversity was calculated across each pre-defined age dataset, in addition to gender and location of collection. The mean phylogenetic diversity (PD), a measure of alpha diversity accounting for phylogenetic differences between bacterial species (Faith, 1992), was calculated for each sample and metadata category. This was compared to the gut flora of previously characterized members of Vespertilionidae (Phillips *et al.*, 2012) to determine if the anal flora is representative of the gut microbiome, further implying the utility of our sampling method. Beta diversity (abundance between samples) was also calculated across all samples before and after rarefaction using both weighted and un-weighted Unifrac distance matrices, which are based on differences between samples using phylogenetic information (Lozupone & Knight, 2005). Hierarchical clustering, using Ward’s method (Ward Jr, 1963), based on number of OTUs detected was applied to samples using R to visualize any separation based on age, sex or location that could be observed. The core microbiome was computed as bacterial species present in at least a ‘user-specified’ percentage of samples. Minimum thresholds ranging from 50–80% were investigated across each age dataset, gender and location.

Statistical analysis

PCoA plots were generated based on the weighted Unifrac distance matrices of beta-diversity for each different categorical variable. These plots were visualized to determine if linear separation existed between ages, gender and location of sample collection. Additionally, Analysis of Similarity (ANOSIM) was applied to the weighted Unifrac distance matrices to determine if a statistically significant difference existed for each data category. ANOSIM is non-parametric and was made distribution-free by using a number of permutations (9,999).

OTU frequencies between juvenile and adult samples were compared using a Kruskal–Wallis analysis of variance to identify bacteria whose abundance was significantly different

across categories, using the ‘*group_significance.py*’ script in QIIME, with Bonferroni correction applied across all results. Additionally, Similarity Percentage (SIMPER; [Clarke, 1993](#)) analysis, a method to assess taxa responsible for the overall observed similarity/dissimilarity between groups, was carried out on the pooled OTU abundance counts for each location both before and after rarefaction. SIMPER was carried out using the PAST software ([Hammer, Harper & Ryan, 2001](#)).

Predictive characterization of microbiomes (PICRUSt)

Phylogenetic Investigation of Communities by Reconstruction of Unobserved States (PICRUSt; [Langille et al., 2013](#)) was used to predict genes/ pathways that might be expressed in bacteria found in the anus of *M. myotis*. Based on bacterial species whose protein coding genes are described in the KEGG and COG databases, PICRUSt attempts to infer genes expressed in each OTU using phylogenetic similarity to a previously characterized species. As per its operational requirements, PICRUSt was used on a normalized biom table generated using the ‘closed OTU picking’ method in QIIME, excluding reads that could not be mapped to a reference OTU cluster. To investigate if metagenomic changes occurred between juvenile and adult microbiomes, functional analysis was conducted using the methodologies described by [Phillips et al. \(2017\)](#), implemented in the R package ‘*FunkyTax*’. This analysis was used to identify if predicted metagenomic function remained the same, were enhanced (increase in abundances of contribution across age groups) or divergent (significantly different composition across ages for a predicted function).

Phylogenetic comparison to other mammals

The average relative abundances of nine bacteria phyla in *M. myotis* were compared to available microbiome data from other mammals, focusing specifically on the gut, rectal or faecal samples, to investigate if closely related taxa shared similar composition. Bacterial abundances were compared under the assumption that, while based on different experimental conditions and research goals, each mammalian microbiome study represents an accurate abundance calculation for that species given the experimental setup. The relative abundances of 35 additional bat species ([Phillips et al., 2012](#); [Carrillo-Araujo et al., 2015](#)), cow rectum ([Mao et al., 2015](#)), dolphin rectum ([Bik et al., 2016](#)), dog faecal sample ([Swanson et al., 2011](#)), human and mouse faecal sample ([Krych et al., 2013](#)), gorilla faecal sample ([Gomez et al., 2015](#)) and Tasmanian devil faecal samples ([Cheng et al., 2015](#)) were compared using principal component analysis (PCA). *K*-means clustering, with the optimum *k* number of clusters decided using the elbow criterion, was carried out in R and used to identify if any ‘bat-specific’ clusters were present, and if species clustering resembled phylogeny ([Datzmann, Helvesen & Mayer, 2010](#); [Meredith et al., 2011](#); [Phillips et al., 2012](#)).

RESULTS

QIIME analyses

Across all 52 samples, 2,947,977 read pairs were overlapped and used for downstream analyses ([Table 1](#)). No spurious amplifications were detected in the negative controls. A

Table 2 Phylogenetic diversity within the *Myotis myotis* microbiome. Mean Phylogenetic Diversity (PD) for each category, representing the range of bacterial species present, are shown for each data category.

Age dataset 1	0 years	1 year	3 years	Unknown			
	19.36	21.24	26.58	26.14			
Age dataset 2	Adults	Juveniles					
	24.67	19.36					
Age dataset 3	Adults	Juveniles	Unknown				
	24.01	19.88	28.94				
Age dataset 4	0 Years	1 Year	1+ Years	2+ Years	3 Years	3+ Years	4+ Years
	19.36	21.24	28.94	23.90	26.59	29.75	20.15
Gender	Male	Female					
	20.4	23.85					
Site	Beg	Fer	LRB	NM			
	14.52	23.89	18.00	24.67			

Table 3 Core microbiomes. Bacteria phyla and the number of OTUs present in a range of core microbiome percentage thresholds for *M. myotis* are displayed.

	Core 50%	Core 60%	Core 70%	Core 80%	Core 90%
Number of OTUs	47	29	20	13	7
% Proteobacteria	57.45%	55.17%	50%	38.46%	42.86%
% Actinobacteria	17.02%	17.24%	20%	15.38%	14.28%
% Firmicutes	17.02%	20.69%	30%	46.16%	42.86%
% Cyanobacteria	4.25%	3.45%	0%	0%	0%
% Chlamydiae	2.13%	0%	0%	0%	0%
% Tenericutes	2.13%	3.45%	0%	0%	0%

rarefying threshold of 8,000 sequences reduced the final number of *M. myotis* samples to 41 individuals. The number of unique OTUs per sample ranged from 77 to 747 (mean = 299). No age, sex or location-specific clusters were observed across samples using hierarchical clustering (Fig. S1). Mean alpha diversity (diversity per sample; PD) for *M. myotis* was 22.34. Similar PD values were found between male (20.4) and female (23.85) and between juveniles and adults (Figs. 1A and 1B; Table 2), with neither comparison showing significant differences (Kruskal–Wallis test, $p > 0.05$). Mean PD values for each data category are displayed in Table 2, with additional bacterial abundances displayed in Fig. S2 and Table S1.

A total of 47 OTUs were present in 50% of all samples consisting of the Actinobacteria, Chlamydiae, Cyanobacteria, Firmicutes, Proteobacteria and Tenericutes phyla highlighting some inter-individual OTU diversity (Fig. S3), with Proteobacteria and Chlamydiae/Tenericutes having the highest and lowest abundance of OTUs, respectively. When increasing this core microbiome threshold, 13 OTUs, containing *Ureibacillus* (Firmicutes), *Corynebacterium* (Actinobacteria), *Enterococcus* (Firmicutes) and *Pseudomonas* (Proteobacteria; Table 3, Table S2, Fig. S4), were found present in 80% of all bats.

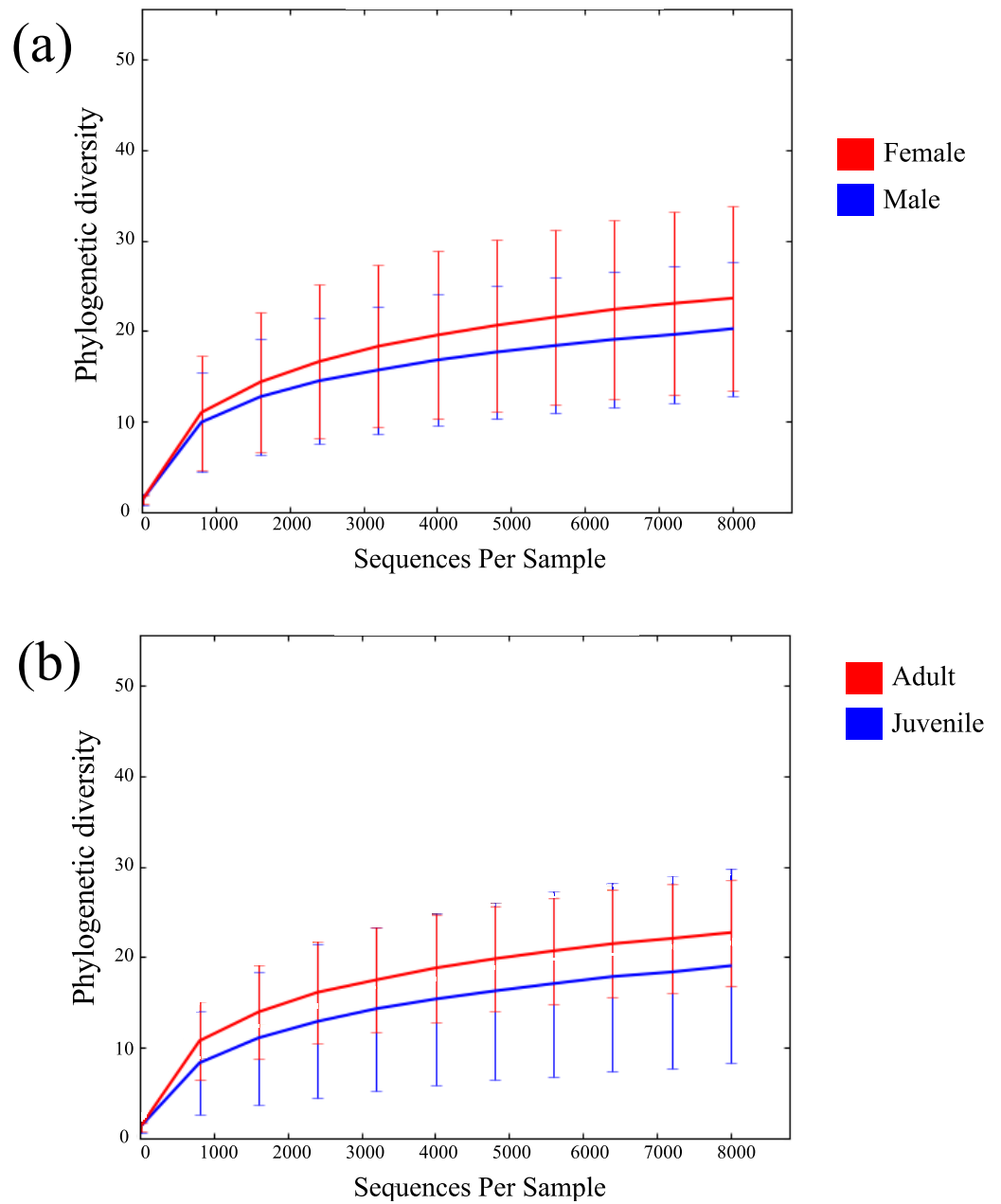


Figure 1 Rarefaction curves of bat microbiomes. Read data was rarefied to 8,000 OTUs, and measured using phylogenetic diversity. (A) The alpha diversity of bat samples were clustered based on gender to investigate differences in bacterial abundance between males and female. (B) Reads were clustered based on age datasets, with age dataset 2 displayed (0 yrs considered juvenile, ≥ 1 yr considered adult).

Full-size  DOI: [10.7717/peerj.4174/fig-1](https://doi.org/10.7717/peerj.4174/fig-1)

Statistical analyses

Principal coordinate analysis showed no clear observable separation of samples based on age, gender or collection site for both un-weighted and weighted Unifrac distances. Weighted Unifrac distances explained a greater percentage of variance using three principal coordinates both before rarefaction (55.27% variance, Figs. S5, S6) and after rarefaction (60.59% variance, Figs. 2A, 2B; Fig. S7). Using ANOSIM, no significant differences were found after Bonferroni correction, reflected in the low R test-statistics ($R \leq 0.14$; Chapman & Underwood, 1999) in all cases. A Kruskal–Wallis non-parametric ANOVA found no significant differences between male and female bats, ruling out gender as a mode of microbial diversity. OTUs were also compared between adult and juveniles (age dataset 2, 3) using a Kruskal–Wallis test revealing four OTUs from the common GI-inhabiting family *Helicobacteraceae* showing differential abundances after Bonferroni correction ($p < 0.05$) in age dataset 2, and no differentially represented OTUs observed between juvenile and adult bats for age dataset 3.

When comparing the percentage dissimilarity of OTU abundance between sites, the average dissimilarity across sites for phyla present was 52.68% and 53.79% before and after rarefaction, respectively. At this taxonomic level, the phyla that contributed most to the overall dissimilarity were Firmicutes (mean dissimilarity 15.09% before and 16.68% after rarefaction) and Proteobacteria (mean dissimilarity 14.83 before and 16.45% after rarefaction). Dissimilarity increased for each taxonomic level, with 80.42% and 85.3% dissimilarity at the family level (Table S3). This dissimilarity may reflect the absence of specific OTUs in one site relative to another, however such dissimilarity did not have a strong affect overall when comparing Unifrac distances, as site-specific clusters could not be determined using PCoA (Figs. S6, S7). Only one OTU, from the phylum Actinobacteria, showed differential abundances between locations (ID: 179312; $p = 0.0002$) suggesting that the collection site did not have a significant effect on microbial composition.

PICRUSt and phylogenetic comparison to other mammals

Across all samples, PICRUSt inferred a total of 41 KEGG pathways present in the *M. myotis* anal flora (Table S4; Fig. 3). Of these 41 pathways, the majority of genes and their top two pathways belonged to membrane transport (14.24%; ‘transporters’ and ‘ABC transporters’), carbohydrate transport (10.51%; ‘amino sugar and nucleotide sugar metabolism’ and ‘glycolysis/gluconeogenesis’), amino acid metabolism (9.35%; ‘amino acid related enzymes’ and ‘arginine and proline metabolism’), replication and repair (7.62%; ‘DNA repair and recombination proteins’ and ‘chromosome’) and energy metabolism (5.21%; ‘oxidative phosphorylation’ and ‘carbon fixation pathways in prokaryotes’).

When comparing predicted metagenomic function between juvenile and adult bats, it was found that out of 2,330 KEGG pathways analyzed, 1,713 predicted functional categories were ‘enhanced’ between juvenile and adult bats for age dataset 2, with a large number of ‘metabolic processes’ in both the enhanced (726) and divergent (246) classification across age groups (Table S5A). Enhanced categories indicate that the functional frequency, rather than the contributing microbiome community, differs across age while divergence implies

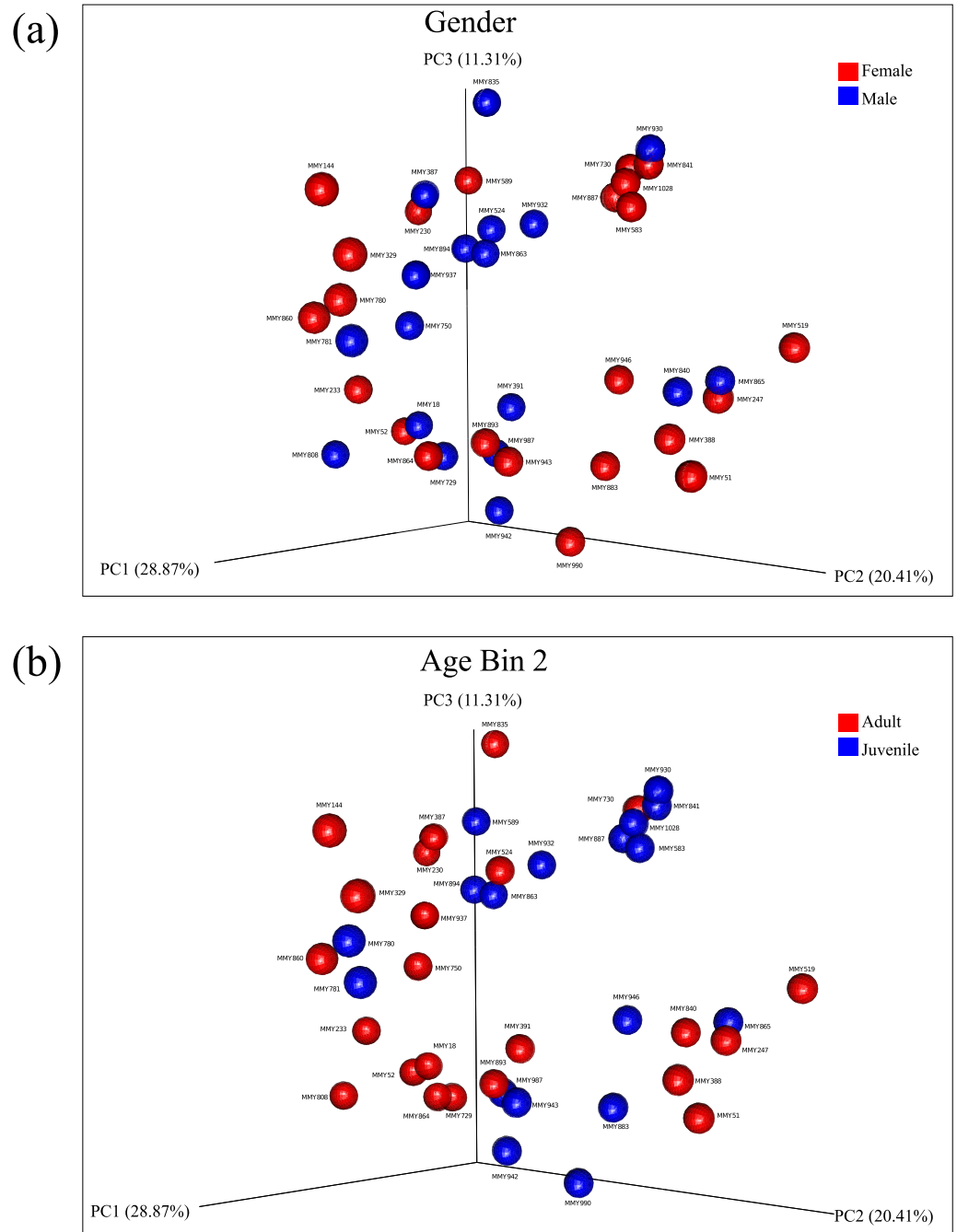


Figure 2 Principal components analysis of beta diversity. Similarity based on diversity between samples was explored using PCoA after rarefaction, explaining 60.59% variance. (A) Beta diversity of male and female samples using weighted Unifrac distances are displayed. (B) Beta diversity using weighted Unifrac distances between adults and juveniles in age dataset 2 are displayed.

Full-size DOI: [10.7717/peerj.4174/fig-2](https://doi.org/10.7717/peerj.4174/fig-2)

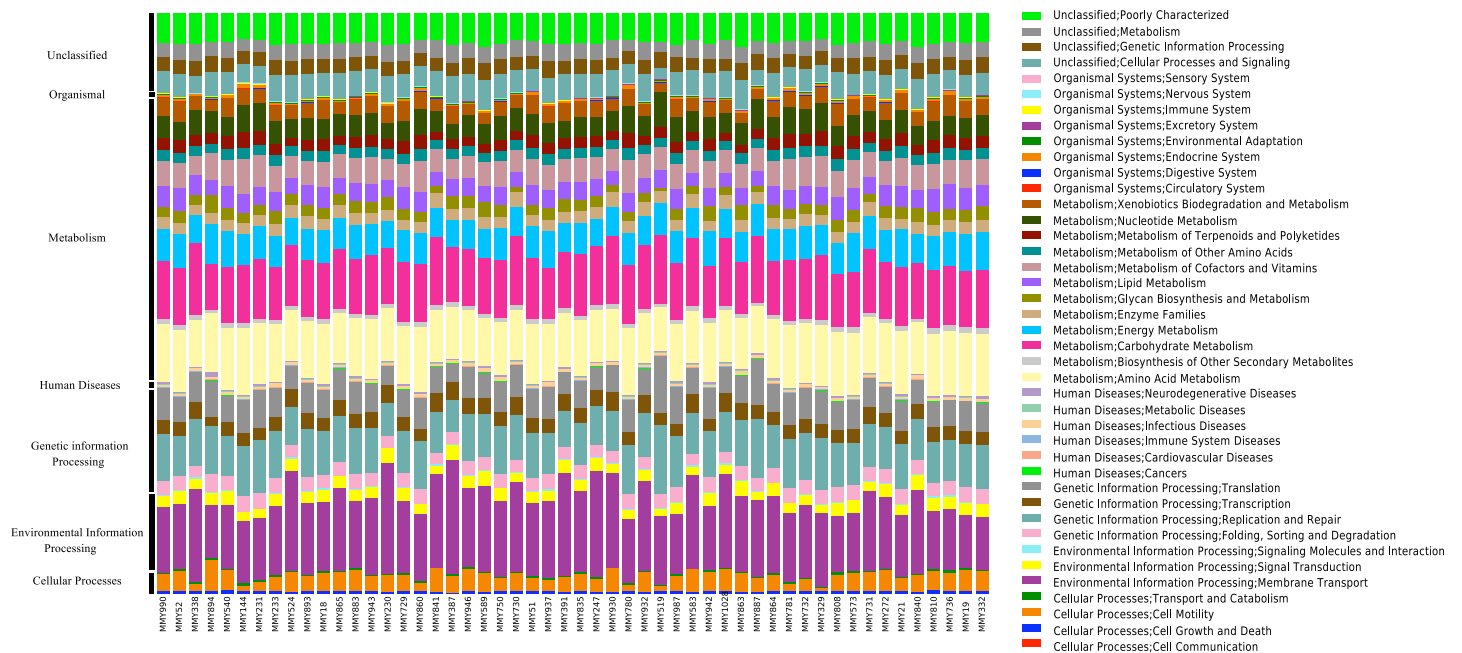


Figure 3 KEGG pathways present in the bat anal microbiota. PICRUST analyses of the bat anal microbiota identified a number of different KEGG gene pathways present.

Full-size [DOI: 10.7717/peerj.4174/fig-3](https://doi.org/10.7717/peerj.4174/fig-3)

both the function and contributing community are different. Only enhanced functions were found for age dataset 3, the majority of which were involved in metabolism (Table S5B).

A comparison of 44 mammal microbiomes, including *M. myotis*, highlighted high abundances of Proteobacteria, but lower abundances of Bacteroidetes in bats compared to terrestrial mammals (Fig. 4). These data were analyzed and visualized using a PCA plot to investigate if closely related species shared similar microbial composition (76.8% variance; Table S8). Using a k value of 4, two clusters composed almost exclusively of bats (Table S6) were identified. Separation between bats and other mammals was apparent, with a large number of bat samples driven by the presence of Proteobacteria (Cluster 3; Table S6), despite differing diets (Fig. 4).

DISCUSSION

When analyzing the anal microbiome of *Myotis myotis*, phylogenetic diversity was slightly higher (22.34) than the PD of the gut microbiome previously established in Vespertilionidae (19.055; Phillips *et al.*, 2012). As these data were obtained through non-lethal sampling, this approach will allow re-sampling of the same individual each year. It is therefore an extremely useful tool for longitudinal microbiome studies. The mean number of observed OTUs was similar between 0 and 1 year olds (age dataset 1) and did not reflect increases observed for similar ages in humans (Yatsunenko *et al.*, 2012). An increase in gut flora diversity between nursing and weaning juveniles has also been observed in pigs (Frese *et*

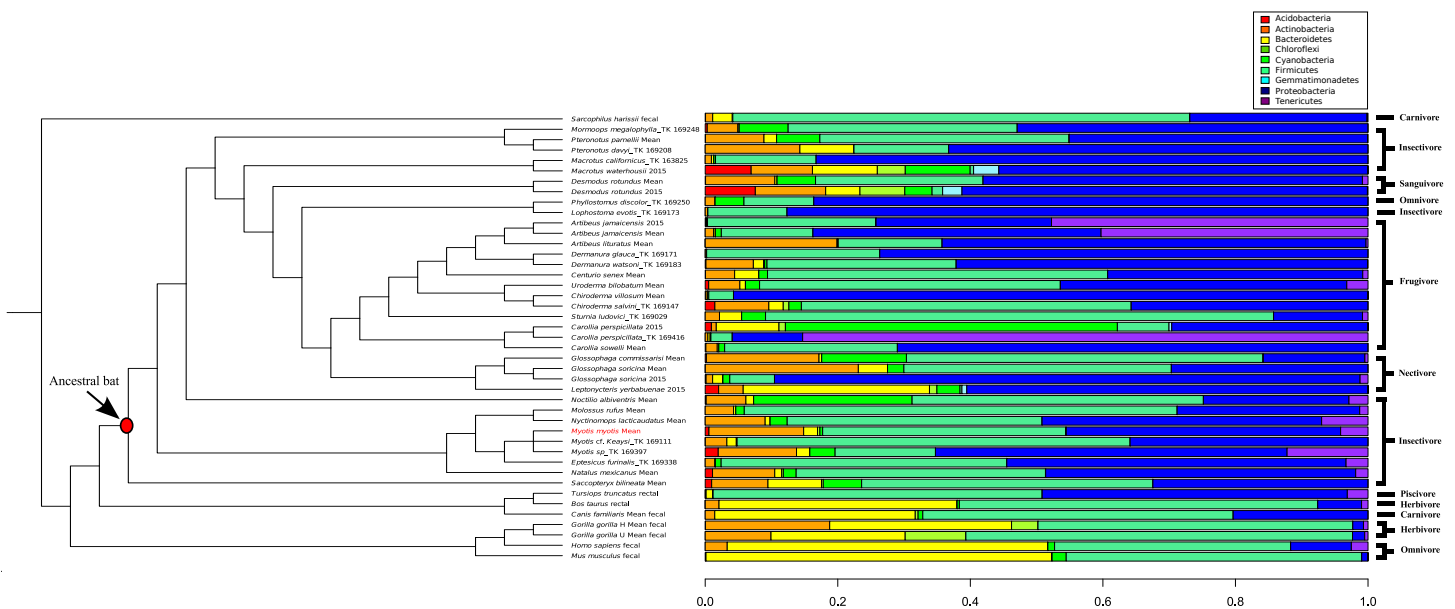


Figure 4 Phylogenetic comparison of microbiome bacterial abundance. The most abundant bacterial phyla expressed in a range of diverse mammalian gut microbiome samples are compared and displayed using an established mammalian phylogeny. Bat samples from *Carrillo-Araujo et al. (2015)* are identified with '2015'. Dietary niches are also displayed.

Full-size DOI: 10.7717/peerj.4174/fig-4

et al., 2015). It was not possible to determine weaning/nursing status of juvenile bats sampled in this study, however, as all juveniles were flying, there were likely partially weaned.

In their study of the aging mouse microbiome, *Langille et al. (2014)* observed a clear and statistically significant separation between young (0.48 years), middle (1.61 years) and old-aged (2.35 years) mice based on gut flora. Using human data, *Yatsunen et al. (2012)* and *Biagi et al. (2016)* identified clustering patterns based on a variety of age ranges, spanning 0–83 and 22–109 years old, implying a general trend in aging. Using similar methods, despite some variability across individuals, we were unable to identify any clear separation between juvenile and adults in 41 *M. myotis* bats, suggesting an element of stability in microbial diversity. The oldest definitive age in our sample cohort is 4 years, representing the MLS of a mouse, a similar sized mammal. The lack of samples representing the late stages of the 37-year lifespan precludes inferences about microbiome composition in the oldest *M. myotis* bats relative to juvenile and adult bats. However, if the microbiome of *M. myotis* remains stable or static throughout their life, it is expected that the abundances of flora in 'old' individuals will be similar to the juveniles and adults described here, further implying microbiome stability as they age. This would emphasize the importance of microbiome stability in longer health-spans, resembling the fine tuned level of microbiome homeostasis regulating host aging in *C. elegans* (*Han et al., 2017*). Our intention in future studies is to involve older *M. myotis* bats to further elucidate the potential role of the microbiome in exceptional longevity and to what extent microbial variability between samples affects global microbiome patterns in bats.

The finding of dominant and variable abundances of Firmicutes and Actinobacteria is consistent with previous mammalian microbiome profiles (Ley et al., 2008). The genera identified in 80% of samples belong to families with many pathogenic species. As these taxa could not be identified to species or strain level, no conclusions can be drawn regarding their presence in the core *M. myotis* microbiome. Despite differences in OTUs found across sites, no significant effect of locality and thus roost specificity could be established. Bacteria from the genera *Citrobacter*, *Enterobacter*, *Escherichia*, *Klebsiella*, *Proteus* and *Streptococcus* were found present in a number of samples, and have previously been documented in the feces of *M. myotis* in Italy (Di Bella et al., 2003). A study of the anal microflora in *M. myotis* in Poland identified species from the *Lactobacillus*, *Enterococcus*, *Serratia*, *Corynebacterium* and *Pseudomonas* genera (Rózalska et al., 1998), all of which are represented in samples included here, indicating a common core of flora, independent of location. A common microbial core is similar to that observed in ruminants (Henderson et al., 2016), and contrasts to the social effects of microbial diversity observed in wild baboons (Tung et al., 2015).

The characterization and comparison of metagenomic content in the anal microbiome determined that the frequency of a number of known functional categories, of which a large proportion were involved in general metabolism, were enhanced from juveniles to adults. There was some divergence observed for age dataset 2, implying some difference in functional abundances across certain samples (1 year old). Other categories involved in energy consumption, DNA repair and oxidative phosphorylation were also present and enhanced and may imply a role of bat gut flora in enabling them to counteract the deleterious effects of metabolically costly powered flight (Shen et al., 2010). Studies of metabolism in insectivorous bats have determined that flight is fuelled directly by ingested prey (insects from the families Carabidae, Orthoptera, Diptera and Arachnida in *M. myotis* (Di Bella et al., 2003)) immediately after consumption, implying extremely rapid metabolism (Voigt et al., 2008; Voigt, Sörgel & Dechmann, 2010). This has also been observed in nectivorous and frugivorous bats (Voigt & Speakman, 2007; Amitai et al., 2010). A high abundance of bacteria producing enzymes involved in energy-related pathways might contribute to the overall managing of, and coping with, by-products of such high metabolism in *M. myotis*. If this is the case, a relatively stable microbial community, as observed between adults and juveniles, may not only be involved in extended longevity, but also play an important role in sustained flight.

By comparing microbiome content across 44 mammals, certain 'bat-specific' clustering was observed. However, without longitudinal data, investigating if the abundance of bacteria in other bats species changes with age, like humans and mice, is not possible at this time. An abundance of 'Proteobacteria' was observed in multiple different bat species, including *M. myotis*. Interestingly, Proteobacteria also show high abundances in birds (Hird et al., 2015), suggesting this phylum or the metabolic by-products it produces, may have a putative role in flight and its metabolic costs rather than aging. As the abundances of the bacteria phyla in the *M. myotis* microbiome appear similar to other bat compositions, it is possible that similar gene pathways are expressed across Chiropteran metagenomes, implicating a putative role of the microbiome in dealing with the energetic demands of

flight. Terrestrial, non-chiropteran species had a much larger abundance of Bacteroidetes relative to bats. The reported low abundance of the Bacteroidetes phylum in the bat gut is consistent with the same results from bat skin (*Avena et al., 2016*).

CONCLUSION

Previous studies investigating the role of the microbiome in aging have focused on human and mice samples, and have demonstrated correlations between microbial changes and a pathogenic aging phenotype. Given the exceptional long life and health-span observed in certain species of bats given their body size, we have investigated the microbiome of the long-lived *M. myotis* using juvenile and early adulthood samples, covering the lifespan range of a similar sized mouse, acquired using a non-lethal mode of sampling. Consistent with earlier studies of bat gut flora, we find a high level of Proteobacteria and Firmicutes, with the microbiome possibly contributing to metabolism, DNA replication/repair and oxidative phosphorylation. Despite some variability across samples, distinct differential abundances in bacterial composition between adult and juvenile bats were not found, contrasting to patterns observed in humans and mice. Instead we observe an element of microbiome stability between juvenile and adult *M. myotis* bats. Given the KEGG pathways present in the anal bat flora, it is possible that metabolites produced by the bat microbiome enable them better tolerate the damaging by-products of flight and may increase metabolic efficiency, with downstream effects on aging. Future studies of older *M. myotis* age cohorts will determine whether patterns observed here continue into old age, and to what extent inter-individual variability affects global microbiome patterns in bat species. Such comparative microbiome studies will help further elucidate bacterial phyla that may contribute to healthier aging.

ACKNOWLEDGEMENTS

We thank Nicole Foley, David Jebb, Serena Dool, Eric Petit, Frédéric Touzalin, Olivier Farcy and Arnaud Le Houédec, and the numerous volunteers and students from BV and University College Dublin for their extensive help in the field, sample collection and the owners/local authorities for allowing access to the sites. We thank Renee Potens, Nidhi Vijayan and Jorie Skutas at NSU for assistance with molecular sample processing and Cole Easson for his help with read processing.

ADDITIONAL INFORMATION AND DECLARATIONS

Funding

This study was funded by a European Research Council Research Grant ERC-2012-StG311000 and a UCD Seed funding grant awarded to Emma C. Teeling, and was supported by the Contrat Nature 'Etude de la dynamique des populations de grand murin (*Myotis myotis*) en Bretagne et Pays de Loire' awarded to Bretagne Vivante. The funders had no role in study design, data collection and analysis, decision to publish, or preparation of the manuscript.

Grant Disclosures

The following grant information was disclosed by the authors:

European Research Council Research Grant: ERC-2012-StG311000.

UCD Seed funding.

Contrat Nature 'Etude de la dynamique des populations de grand murin (*Myotis myotis*) en Bretagne et Pays de Loire'.

Competing Interests

The authors declare there are no competing interests. John Leech is also a research scientist at the Teagasc Food Research Centre, Fermoy, Cork, Ireland.

Author Contributions

- Graham M. Hughes conceived and designed the experiments, performed the experiments, analyzed the data, contributed reagents/materials/analysis tools, wrote the paper, prepared figures and/or tables, reviewed drafts of the paper.
- John Leech performed the experiments, analyzed the data, contributed reagents/materials/analysis tools, wrote the paper, prepared figures and/or tables, reviewed drafts of the paper.
- Sébastien J. Puechmaille analyzed the data, contributed reagents/materials/analysis tools, wrote the paper, reviewed drafts of the paper.
- Jose V. Lopez conceived and designed the experiments, performed the experiments, contributed reagents/materials/analysis tools, wrote the paper, reviewed drafts of the paper.
- Emma C. Teeling conceived and designed the experiments, contributed reagents/materials/analysis tools, wrote the paper, reviewed drafts of the paper.

Animal Ethics

The following information was supplied relating to ethical approvals (i.e., approving body and any reference numbers):

All captures and sample collections were carried out in accordance with the ethical guidelines and permits delivered in 'Arrêté' by the Préfet du Morbihan, Bretagne awarded to Eric Petit, Frédéric Touzalin and Sébastien Puechmaille for the time period 15 June-15 September 2013–2017. Full ethics approval and permission (AREC-13-38-Teeling) for capture and field sampling was also awarded by the University College Dublin, ethics committee to Emma Teeling. Access to all field sites was granted by local authorities in collaboration with Bretagne Vivante. Shipment of samples to NSU was permitted via US Public Health Service permit # 2014-07-015 issued by the Center for Disease Control to Jose Lopez.

Data Availability

The following information was supplied regarding data availability:

Hughes, GM; Leech, J; Puechmaille, SJ; Lopez, JV; Teeling, EC (2018): Is there a link between aging and microbiome diversity in exceptional mammalian longevity? figshare. <https://doi.org/10.6084/m9.figshare.5263567>.

Supplemental Information

Supplemental information for this article can be found online at <http://dx.doi.org/10.7717/peerj.4174#supplemental-information>.

REFERENCES

- Amitai O, Holtze S, Barkan S, Amichai E, Korine C, Pinshow B, Voigt CC. 2010. Fruit bats (Pteropodidae) fuel their metabolism rapidly and directly with exogenous sugars. *Journal of Experimental Biology* 213:2693–2699 DOI 10.1242/jeb.043505.
- Atarashi K, Tanoue T, Oshima K, Suda W, Nagano Y, Nishikawa H, Fukuda S, Saito T, Narushima S, Hase K, Kim S, Fritz JV, Wilmes P, Ueha S, Matsushima K, Ohno H, Olle B, Sakaguchi S, Taniguchi T, Morita H, Hattori M, Honda K. 2013. Treg induction by a rationally selected mixture of Clostridia strains from the human microbiota. *Nature* 500:232–236 DOI 10.1038/nature12331.
- Austad SN. 2010. Methusaleh's zoo: how nature provides us with clues for extending human health span. *Journal of Comparative Pathology* 142:S10–S21 DOI 10.1016/j.jcpa.2009.10.024.
- Avena CV, Parfrey LW, Leff JW, Archer HM, Frick WF, Langwig KE, Kilpatrick AM, Powers KE, Foster JT, McKenzie VJ. 2016. Deconstructing the bat skin microbiome: influences of the host and the environment. *Frontiers in Microbiology* 7:Article 1753 DOI 10.3389/fmicb.2016.01753.
- Biagi E, Franceschi C, Rampelli S, Severgnini M, Ostan R, Turroni S, Consolandi C, Quercia S, Scurti M, Monti D, Capri M, Brigidi P, Candela M. 2016. Gut microbiota and extreme longevity. *Current Biology* 26:1480–1485 DOI 10.1016/j.cub.2016.04.016.
- Bik EM, Costello EK, Switzer AD, Callahan BJ, Holmes SP, Wells RS, Carlin KP, Jensen ED, Venn-Watson S, Relman DA. 2016. Marine mammals harbor unique microbiotas shaped by and yet distinct from the sea. *Nature Communications* 7:Article 10516 DOI 10.1038/ncomms10516.
- Caporaso JG, Kuczynski J, Stombaugh J, Bittinger K, Bushman FD, Costello EK, Fierer N, Peña AG, Goodrich JK, Gordon JI, Huttley GA, Kelley ST, Knights D, Koenig JE, Ley RE, Lozupone CA, McDonald D, Muegge BD, Pirrung M, Reeder J, Sevinsky JR, Turnbaugh PJ, Walters WA, Widmann J, Yatsunencko T, Zaneveld J, Knight R. 2010. QIIME allows analysis of high-throughput community sequence data. *Nature Methods* 7:335–336 DOI 10.1038/nmeth.f.303.
- Caporaso JG, Lauber CL, Walters WA, Berg-Lyons D, Huntley J, Fierer N, Owens SM, Betley J, Fraser L, Bauer M, Gormley N, Gilbert JA, Smith G, Knight R. 2012. Ultra-high-throughput microbial community analysis on the Illumina HiSeq and MiSeq platforms. *ISME Journal* 6:1621–1624 DOI 10.1038/ismej.2012.8.
- Carrillo-Araujo M, Tas N, Alcántara-Hernández RJ, Gaona O, Schondube JE, Medellín RA, Jansson JK, Falcón LI. 2015. Phyllostomid bat microbiome composition is associated to host phylogeny and feeding strategies. *Frontiers in Microbiology* 6:Article 447 DOI 10.3389/fmicb.2015.00447.

- Chapman MG, Underwood AJ. 1999.** Ecological patterns in multivariate assemblages: information and interpretation of negative values in ANOSIM tests. *Marine Ecology Progress Series* **180**:257–265 DOI [10.3354/meps180257](https://doi.org/10.3354/meps180257).
- Cheng Y, Fox S, Pemberton D, Hogg C, Papenfuss AT, Belov K. 2015.** The Tasmanian devil microbiome—implications for conservation and management. *Microbiome* **3**:Article 76 DOI [10.1186/s40168-015-0143-0](https://doi.org/10.1186/s40168-015-0143-0).
- Clarke KR. 1993.** Non-parametric multivariate analysis of changes in community structure. *Australian Journal of Ecology* **18**:117–143 DOI [10.1111/j.1442-9993.1993.tb00438.x](https://doi.org/10.1111/j.1442-9993.1993.tb00438.x).
- Datzmann T, Helversen O, Mayer F. 2010.** Evolution of nectarivory in phyllostomid bats (Phyllostomidae Gray, 1825, Chiroptera: Mammalia). *BMC Evolutionary Biology* **10**:165 DOI [10.1186/1471-2148-10-165](https://doi.org/10.1186/1471-2148-10-165).
- DeSantis TZ, Hugenholtz P, Larsen N, Rojas M, Brodie EL, Keller K, Huber T, Dalevi D, Hu P, Andersen GL. 2006.** Greengenes, a chimera-checked 16S rRNA gene database and workbench compatible with ARB. *Applied Environmental Microbiology* **72**:5069–5072 DOI [10.1128/AEM.03006-05](https://doi.org/10.1128/AEM.03006-05).
- Di Bella C, Piraino C, Caracappa S, Fornasari L, Violani C, Zava B. 2003.** Enteric microflora in Italian Chiroptera. *Journal of Mountain Ecology* **7**:221–224.
- Faith DP. 1992.** Conservation evaluation and phylogenetic diversity. *Biological Conservation* **61**:1–10 DOI [10.1016/0006-3207\(92\)91201-3](https://doi.org/10.1016/0006-3207(92)91201-3).
- Flint HJ, Scott KP, Louis P, Duncan SH. 2012.** The role of the gut microbiota in nutrition and health. *Nature Reviews Gastroenterology & Hepatology* **9**:577–589 DOI [10.1038/nrgastro.2012.156](https://doi.org/10.1038/nrgastro.2012.156).
- Frese SA, Parker K, Calvert CC, Mills DA. 2015.** Diet shapes the gut microbiome of pigs during nursing and weaning. *Microbiome* **3**:Article 28 DOI [10.1186/s40168-015-0091-8](https://doi.org/10.1186/s40168-015-0091-8).
- Gaisler J, Hanak V, Hanzal V, Jarsky V. 2003.** Results of bat branding in the Czech and Slovak Republics, 1948–2000. *Vespertilio* **7**:3–61.
- Gilbert JA, Quinn RA, Debelius J, Xu ZZ, Morton J, Garg N, Jansson JK, Dorrestein PC, Knight R. 2016.** Microbiome-wide association studies link dynamic microbial consortia to disease. *Nature* **535**:94–103 DOI [10.1038/nature18850](https://doi.org/10.1038/nature18850).
- Gomez A, Petrzalkova K, Yeoman CJ, Vlckova K, Mrázek J, Koppova I, Carbonero F, Ulanov A, Modry D, Todd A, Torralba M, Nelson KE, Gaskins HR, Wilson B, Stumpf RM, White BA, Leigh SR. 2015.** Gut microbiome composition and metabolomic profiles of wild western lowland gorillas (*Gorilla gorilla gorilla*) reflect host ecology. *Molecular Ecology* **24**:2551–2565 DOI [10.1111/mec.13181](https://doi.org/10.1111/mec.13181).
- Hammer Ø, Harper DAT, Ryan PD. 2001.** PAST: paleontological statistics software package for education and data analysis. *Paleontologia Electronica* **4**:1–9.
- Han B, Sivaramakrishnan P, Lin C-CJ, Neve IAA, He J, Tay LWR, Sowa JN, Sizovs A, Du G, Wang J, Herman C, Wang MC. 2017.** Microbial genetic composition tunes host longevity. *Cell* **7**:1249–1262 DOI [10.1016/j.cell.2017.05.036](https://doi.org/10.1016/j.cell.2017.05.036).
- Henderson G, Cox F, Ganesh S, Jonker A, Young W, Global Rumen Census Collaborators, Janssen PH. 2016.** Rumen microbial community composition varies with diet

- and host, but a core microbiome is found across a wide geographical range. *Scientific Reports* 5:14567 DOI 10.1038/srep14567.
- Hird SM, Sánchez C, Carstens BC, Brumfield RT. 2015. Comparative gut microbiota of 59 neotropical bird species. *Frontiers in Microbiology* 6:Article 1403 DOI 10.3389/fmicb.2015.01403.
- Huang Z, Gallot A, Lao NT, Puechmaille SJ, Foley NM, Jebb D, Bekaert M, Teeling EC. 2016. A nonlethal sampling method to obtain, generate and assemble whole blood transcriptomes from small, wild mammals. *Molecular Ecology Resources* 16:150–162 DOI 10.1111/1755-0998.12447.
- Krych L, Hansen CHF, Hansen AK, Van den Berg FWJ, Nielsen DS. 2013. Quantitatively different, yet qualitatively alike: a meta-analysis of the mouse core gut microbiome with a view towards the human gut microbiome. *PLOS ONE* 8:e62578 DOI 10.1371/journal.pone.0062578.
- Langille M, Meehan CJ, Koenig JE, Dhanani AS, Rose RA, Howlett SE, Beiko RG. 2014. Microbial shifts in the aging mouse gut. *Microbiome* 2:Article 50 DOI 10.1186/s40168-014-0050-9.
- Langille M, Zaneveld J, Caporaso JG, McDonald D, Knights D, Reyes J, Clemente JC, Burkepile DE, Vega Thurber RL, Knight R, Beiko RG, Huttenhower C. 2013. Predictive functional profiling of microbial communities using 16S rRNA marker gene sequences. *Nature Biotechnology* 31:814–821 DOI 10.1038/nbt.2676.
- Ley RE, Lozupone CA, Hamaday M, Knight R, Gordon JI. 2008. Worlds within worlds: evolution of the vertebrate gut microbiota. *Nature Reviews Microbiology* 6(10):776–788 DOI 10.1038/nrmicro1978.
- López-Otín C, Blasco MA, Partridge L, Serrano M, Kroemer G. 2013. The hallmarks of aging. *Cell* 153:1194–1217 DOI 10.1016/j.cell.2013.05.039.
- Lozupone C, Knight R. 2005. UniFrac: a new phylogenetic method for comparing microbial communities. *Applied Environmental Microbiology* 71:8228–8235 DOI 10.1128/AEM.71.12.8228-8235.2005.
- Mao S, Zhang M, Liu J, Zhu W. 2015. Characterising the bacterial microbiota across the gastrointestinal tracts of dairy cattle: membership and potential function. *Scientific Reports* 5:16116 DOI 10.1038/srep16116.
- McMurdie PJ, Holmes S. 2014. Waste not, want not: why rarefying microbiome data is inadmissible. *PLOS Computational Biology* 10:e1003531 DOI 10.1371/journal.pcbi.1003531.
- Mello AM, Paroni G, Daragjati J, Pilotto A. 2016. Gastrointestinal microbiota and their contribution to healthy aging. *Digestive Diseases* 34:194–201 DOI 10.1159/000443350.
- Meredith RW, Janečka JE, Gatesy J, Ryder OA, Fisher CA, Teeling EC, Goodbla A, Eizirik E, Simão TLL, Stadler T, Rabosky DL, Honeycutt RL, Flynn JJ, Ingram CM, Steiner C, Williams TL, Robinson TJ, Burk-Herrick A, Westerman M, Ayoub NA, Springer MS, Murphy WJ. 2011. Impacts of the cretaceous terrestrial revolution and KPg extinction on mammal diversification. *Science* 334:521–524 DOI 10.1126/science.1211028.

- O'Hara AM, Shanahan F. 2006. The gut flora as a forgotten organ. *EMBO Reports* 7:688–693 DOI 10.1038/sj.embor.7400731.
- Phillips CD, Hanson J, Wilkinson JE, Koenig L, Rees E, Webala P, Kingston T. 2017. Microbiome structural and functional interactions across host dietary niche space. *Integrative and Comparative Biology* 57:743–755 DOI 10.1093/icb/ix011.
- Phillips CD, Phelan G, Dowd SE, McDonough MM, Ferguson AW, Delton Hanson J, Siles L, Ordóñez-Garza N, San Francisco M, Baker RJ. 2012. Microbiome analysis among bats describes influences of host phylogeny, life history, physiology and geography. *Molecular Ecology* 21:2617–2627 DOI 10.1111/j.1365-294X.2012.05568.x.
- Rózalska B, Radzicki G, Sadowska B, Markowski J, Rudnicka W. 1998. Aerobic Microflora of *Myotis myotis* (Borkhausen, 1797) and *Barbastella* (Schreber, 1774). *Bulletin of the Polish Academy of Sciences, Biological Sciences* 46:59–67.
- Saraswati S, Sitaraman R. 2015. Aging and the human gut microbiota—from correlation to causality. *Frontiers in Microbiology* 5:Article 764 DOI 10.3389/fmicb.2014.00764.
- Shen Y-Y, Liang L, Zhu Z-H, Zhou W-P, Irwin DM, Zhang Y-P. 2010. Adaptive evolution of energy metabolism genes and the origin of flight in bats. *Proceedings of the National Academy of Sciences of the United States of America* 107:8666–8671 DOI 10.1073/pnas.0912613107.
- Swanson KS, Dowd SE, Suchodolski JS, Middelbos IS, Vester BM, Barry KA, Nelson KE, Torralba M, Henrissat B, Coutinho PM, Cann IKO, White BA, Fahey Jr GC. 2011. Phylogenetic and gene-centric metagenomics of the canine intestinal microbiome reveals similarities with humans and mice. *ISME Journal* 5:639–649 DOI 10.1038/ismej.2010.162.
- Tung J, Barreiro LB, Burns MB, Grenier J-C, Lynch J, Grieneisen LE, Altmann J, Alberts SC, Blekhman R, Archie EA. 2015. Social networks predict gut microbiome composition in wild baboons. *ELife* 4:e05224 DOI 10.7554/eLife.05224.001.
- Van Tongeren SP, Slaets JPI, Harmsen HJM, Welling GW. 2005. Fecal microbiota composition and frailty. *Applied Environmental Microbiology* 71:6438–6442 DOI 10.1128/AEM.71.10.6438-6442.2005.
- Voigt CC, Baier L, Speakman JR, Siemers BM. 2008. Stable carbon isotopes in exhaled breath as tracers for dietary information in birds and mammals. *Journal of Experimental Biology* 211:2233–2238 DOI 10.1242/jeb.018523.
- Voigt CC, Sörgel K, Dechmann DK. 2010. Refueling while flying: foraging bats combust food rapidly and directly to power flight. *Ecology* 91:2908–2917 DOI 10.1890/09-2232.1.
- Voigt CC, Speakman JR. 2007. Nectar-feeding bats fuel their high metabolism directly with exogenous carbohydrates. *Functional Ecology* 21:913–921 DOI 10.1111/j.1365-2435.2007.01321.x.
- Ward Jr JH. 1963. Hierarchical grouping to optimize an objective function. *Journal of the American Statistical Association* 58:236–244 DOI 10.1080/01621459.1963.10500845.
- Weiss S, Xu ZZ, Peddada S, Amir A, Bittinger K, Gonzalez A, Lozupone C, Zaneveld JR, Vázquez-Baeza Y, Birmingham A, Hyde ER, Knight R. 2017. Normalization

and microbial differential abundance strategies depend upon data characteristics.

Microbiome 5:Article 27 DOI [10.1186/s40168-017-0237-y](https://doi.org/10.1186/s40168-017-0237-y).

Yatsunenkov T, Rey FE, Manary MJ, Trehan I, Dominguez-Bello MG, Contreras M, Magris M, Hidalgo G, Baldassano RN, Anokhin AP, Heath AC, Warner B, Reeder J, Kuczynski J, Caporaso JG, Lozupone CA, Lauber C, Clemente JC, Knights D, Knight R, Gordon JI. 2012. Human gut microbiome viewed across age and geography. *Nature* 486:222–227 DOI [10.1038/nature11053](https://doi.org/10.1038/nature11053).