

10-7-2020

**The complete mitochondrial genome of a gray reef shark,
Carcharhinus amblyrhynchos (Carcharhiniformes:
Carcharhinidae), from the Western Indian Ocean**

Ela Patel

Andrea Bernard

Marissa Mehlrose

Sydney Harned

Kimberly A. Finnegan

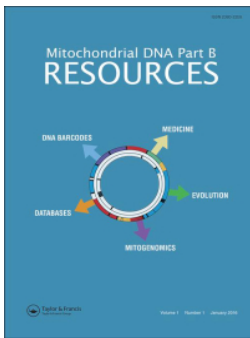
See next page for additional authors

Follow this and additional works at: https://nsuworks.nova.edu/cnso_bio_facarticles

 Part of the [Biology Commons](#)

Authors

Ela Patel, Andrea Bernard, Marissa Mehloose, Sydney Harned, Kimberly A. Finnegan, Cristin K. Fitzpatrick, James S. Lea, and Mahmood S. Shivji



Mitochondrial DNA Part B Resources

ISSN: (Print) (Online) Journal homepage: <https://www.tandfonline.com/loi/tmdn20>

The complete mitochondrial genome of a gray reef shark, *Carcharhinus amblyrhynchos* (Carcharhiniformes: Carcharhinidae), from the Western Indian Ocean

Ela Patel , Andrea M. Bernard , Marissa Mehloose , Sydney Harned , Kimberly A. Finnegan , Cristín K. Fitzpatrick , James S. Lea & Mahmood S. Shivji

To cite this article: Ela Patel , Andrea M. Bernard , Marissa Mehloose , Sydney Harned , Kimberly A. Finnegan , Cristín K. Fitzpatrick , James S. Lea & Mahmood S. Shivji (2020) The complete mitochondrial genome of a gray reef shark, *Carcharhinus amblyrhynchos* (Carcharhiniformes: Carcharhinidae), from the Western Indian Ocean, Mitochondrial DNA Part B, 5:3, 3498-3499, DOI: [10.1080/23802359.2020.1827064](https://doi.org/10.1080/23802359.2020.1827064)

To link to this article: <https://doi.org/10.1080/23802359.2020.1827064>



© 2020 The Author(s). Published by Informa UK Limited, trading as Taylor & Francis Group.



Published online: 07 Oct 2020.



Submit your article to this journal [↗](#)



Article views: 200



View related articles [↗](#)



View Crossmark data [↗](#)

The complete mitochondrial genome of a gray reef shark, *Carcharhinus amblyrhynchos* (Carcharhiniformes: Carcharhinidae), from the Western Indian Ocean

Ela Patel^{a,b}, Andrea M. Bernard^a, Marissa Mehrlrose^a, Sydney Harned^a, Kimberly A. Finnegan^a, Cristin K. Fitzpatrick^c, James S. Lea^{d,e} and Mahmood S. Shivji^a

^aSave Our Seas Foundation Shark Research Center, Nova Southeastern University, Florida, USA; ^bTrinity Preparatory School, Florida, USA; ^cState Fisheries Genomics Lab, Department of Fisheries and Wildlife, Oregon State University, Oregon, USA; ^dSave Our Seas Foundation, Geneva, Switzerland; ^eDepartment of Zoology, University of Cambridge, Cambridge, UK

ABSTRACT

We present the mitochondrial genome sequence of a gray reef shark, *Carcharhinus amblyrhynchos* (Bleeker 1856), a coral reef associated species. This is the first mitogenome for this species from the western Indian Ocean. The mitogenome is 16,705 bp in length, has 13 protein-coding genes, 22 tRNA genes, 2 rRNA genes and a non-coding control region, and demonstrates a gene arrangement congruent with other shark and most vertebrate species. This mitogenome provides a genomic resource for assisting with population, evolutionary and conservation studies for the gray reef shark, which is increasingly under threat from fisheries.

ARTICLE HISTORY

Received 1 August 2020
Accepted 17 September 2020

KEYWORDS



Gray reef shark;
mitogenome; *Carcharhinus amblyrhynchos*

The gray reef shark, *Carcharhinus amblyrhynchos* (Carcharhinidae), has a broad tropical distribution ranging from the Western Indian to the Central Pacific Oceans. This large-bodied shark is commonly associated with coral reefs where it can constitute a major proportion of the high trophic-level predator biomass, and likely plays an important role in structuring reef communities (Friedlander et al. 2014; Speed et al. 2019). Stemming recent declines in reef shark species caused by overfishing requires urgent management and conservation measures, with concomitant information on the genetic dynamics of reef shark populations to guide these efforts (Heupel et al. 2019). The population genetic studies to date on *C. amblyrhynchos* have focused largely on the eastern Indo-Pacific distribution of this species, finding strong population structure across large oceanic distances (Momigliano et al. 2015, 2017; Boissin et al. 2019). Dunn et al. (2020) have recently reported mitogenome sequences from two *C. amblyrhynchos* individuals sampled in the Chagos Archipelago, mid-Indian Ocean. Here, we report the mitogenome of a *C. amblyrhynchos* shark sampled from the Seychelles archipelago in the western Indian Ocean, approximately 2000 km distant from the Chagos Archipelago across a deep ocean expanse.

The fin tissue used for genomic DNA extraction was obtained in 2013 from a female shark tagged at D'Arros Island (LAT: -5.41052° , LONG: 53.29583°) in the Republic of Seychelles. DNA was extracted using Qiagen's Blood & Tissue Kit (QIAGEN, Inc. USA). The shark sample (NSU accession

number OC-891) is stored in 100% ethanol at Nova Southeastern University, Guy Harvey Oceanographic Research Center, Florida, USA.

Five overlapping sections of the *C. amblyrhynchos* mitogenome were amplified by long PCR using previously published primer pairs and those designed from published *Carcharhinus* species mitogenomes. The PCR amplicons were pooled for library preparation with a Nextera XT DNA Sample Preparation kit (Illumina, San Diego, CA). Final whole mitogenome libraries were 2×250 bp paired end sequenced on an Illumina MiSeq sequencer. Reads were assembled using the "Map to Reference" feature in Geneious R9.1.8 and the two published *C. amblyrhynchos* mitogenomes (MT104515 and MT093205; Dunn et al. 2020) as reference sequences. Reads were mapped twice (once per published sequence), and resultant sequence assemblies were identical. The mitogenome was annotated using MitoAnnotator (Iwasaki et al. 2013; <http://mitofish.aori.u-tokyo.ac.jp/annotation/input.html>), and annotations confirmed by comparison to the two published *C. amblyrhynchos* mitogenomes. The program MUSCLE was utilized to align our Seychelles *C. amblyrhynchos* sequence with the two Chagos Archipelago *C. amblyrhynchos* sequences (Dunn et al. 2020), 10 other *Carcharhinus* species mitogenomes and the carcharhinid shark *Triaenodon obesus* mitogenome as the outgroup (Figure 1). The program MEGA 10.1.8 (Kumar et al. 2018) was used to produce a maximum likelihood phylogeny using GTR+I+G as the best substitution model given by jModelTest v.2.1.10 (Darriba et al. 2012).

CONTACT Mahmood S. Shivji  mahmood@nova.edu  Nova Southeastern University, Save Our Seas Foundation Shark Research Center, 8000 North Ocean Drive, Dania Beach, 33004, Florida, USA

© 2020 The Author(s). Published by Informa UK Limited, trading as Taylor & Francis Group. This is an Open Access article distributed under the terms of the Creative Commons Attribution License (<http://creativecommons.org/licenses/by/4.0/>), which permits unrestricted use, distribution, and reproduction in any medium, provided the original work is properly cited.

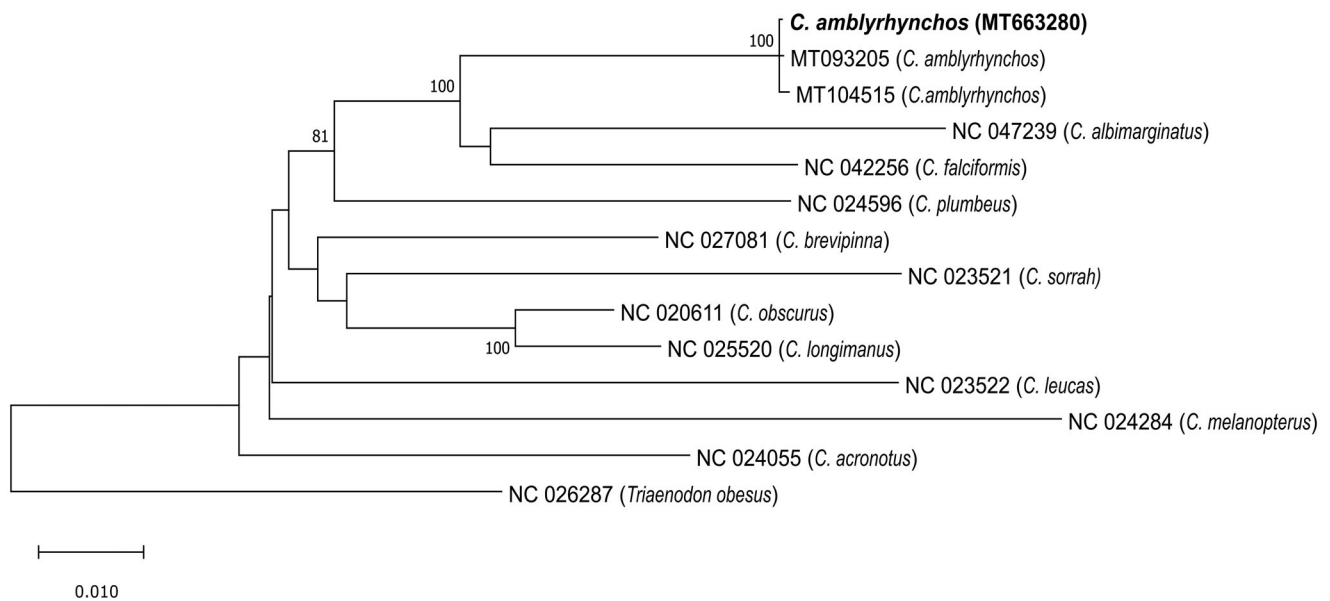


Figure 1. Maximum likelihood tree based on the GTR + I + G model of evolution and 1000 bootstraps. The tree with the highest log likelihood is shown. The percentage of trees in which the associated taxa clustered together is shown next to the branches for all nodes where the support is >75%. The Seychelles *C. amblyrhynchos* mitogenome (MT663280) placement is shown in bold.

The Seychelles *C. amblyrhynchos* mitogenome sequence (gb: MT663280) is 16,705 bp in length with a gene order identical to that of other sequenced *Carcharhinus* species and typical of most vertebrates, with 13 protein-coding genes, 22 tRNA genes, 2 rRNA genes, and a non-coding control region (D-loop). Nucleotide composition leaned to an A + T bias with 31.5% A, 25.2% C, 13.1% G, and 30.1% T. The ND2, ND3, ND4, COII, and CYTB genes contained incomplete stop codons. The Seychelles *C. amblyrhynchos* shark had 99.9% identity to the two Chagos *C. amblyrhynchos* individuals. The Seychelles shark contained 23 substitutions compared to Chagos individual (MT104515) sequenced by the Oxford Nanopore system, 10 substitutions compared to Chagos individual (MT093205) sequenced using the Illumina HiSeq system, and five substitutions (with two occurring in the control region) compared to both Chagos *C. amblyrhynchos* individuals. The maximum likelihood analysis is consistent with the results of Dunn et al. (2020), clustering *C. amblyrhynchos* with *C. albimarginatus* and *C. falciformis* (Figure 1).

Disclosure statement

No potential conflict of interest was reported by the author(s).

Funding

We thank the Save Our Seas Foundation [Grant 157] for support.

Data availability statement

Mitogenome data supporting this study are openly available in GenBank at: <https://www.ncbi.nlm.nih.gov/nuccore/MT663280>.

The raw Illumina sequence reads are available from the NCBI SRA database: <https://www.ncbi.nlm.nih.gov/sra/SRX8934594>

References

- Boissin E, Thorrold SR, Braun CD, Zhou Y, Clua EE, Planes S. 2019. Contrasting global, regional and local patterns of genetic structure in gray reef shark populations from the Indo-Pacific region. *Sci Rep.* 9(1): 15816.
- Darriba D, Taboada GL, Doallo R, Posada D. 2012. jModelTest 2: more models, new heuristics and parallel computing. *Nat Methods.* 9(8):772.
- Dunn N, Johri S, Curnick D, Carbone C, Dinsdale EA, Chapple TK, Block BA, Savolainen V. 2020. Complete mitochondrial genome of the gray reef shark, *Carcharhinus amblyrhynchos* (Carcharhiniformes: Carcharhinidae). *Mitochondrial DNA Part B.* 5(3):2080–2082.
- Friedlander AM, Caselle JE, Ballesteros E, Brown EK, Turchik A, Sala E. 2014. The real bounty: marine biodiversity in the Pitcairn Islands. *PLOS One.* 9(6):e100142.
- Heupel MR, Papastamatiou YP, Espinoza M, Green ME, Simpfendorfer CA. 2019. Reef shark science – key questions and future directions. *Front Mar Sci.* 6:12.
- Iwasaki W, Fukunaga T, Isagozawa R, Yamada K, Maeda Y, Satoh TP, Sado T, Mabuchi K, Takeshima H, Miya M, et al. 2013. MitoFish and MitoAnnotator: a mitochondrial genome database of fish with an accurate and automatic annotation pipeline. *Mol Biol Evol.* 30(11): 2531–2540.
- Kumar S, Stecher G, Li M, Knyaz C, Tamura K. 2018. MEGA X: molecular evolutionary genetics analysis across computing platforms. *Mol Biol Evol.* 35(6):1547–1549.
- Momigliano P, Harcourt R, Robbins WD, Jaiteh V, Mahardika GN, Sembiring A, Stow A. 2017. Genetic structure and signatures of selection in grey reef sharks (*Carcharhinus amblyrhynchos*). *Heredity.* 119(3):142–153.
- Momigliano P, Harcourt R, Robbins WD, Stow A. 2015. Connectivity in grey reef sharks (*Carcharhinus amblyrhynchos*) determined using empirical and simulated genetic data. *Sci Rep.* 5(1):13229.
- Speed CW, Rees MJ, Cure K, Vaughan B, Meekan MG. 2019. Protection from illegal fishing and shark recovery restructures mesopredatory fish communities on a coral reef. *Ecol Evol.* 9(18):10553–10566.