

5-2018

The Current Volume 29 : Orientation Issue-Pullout Section

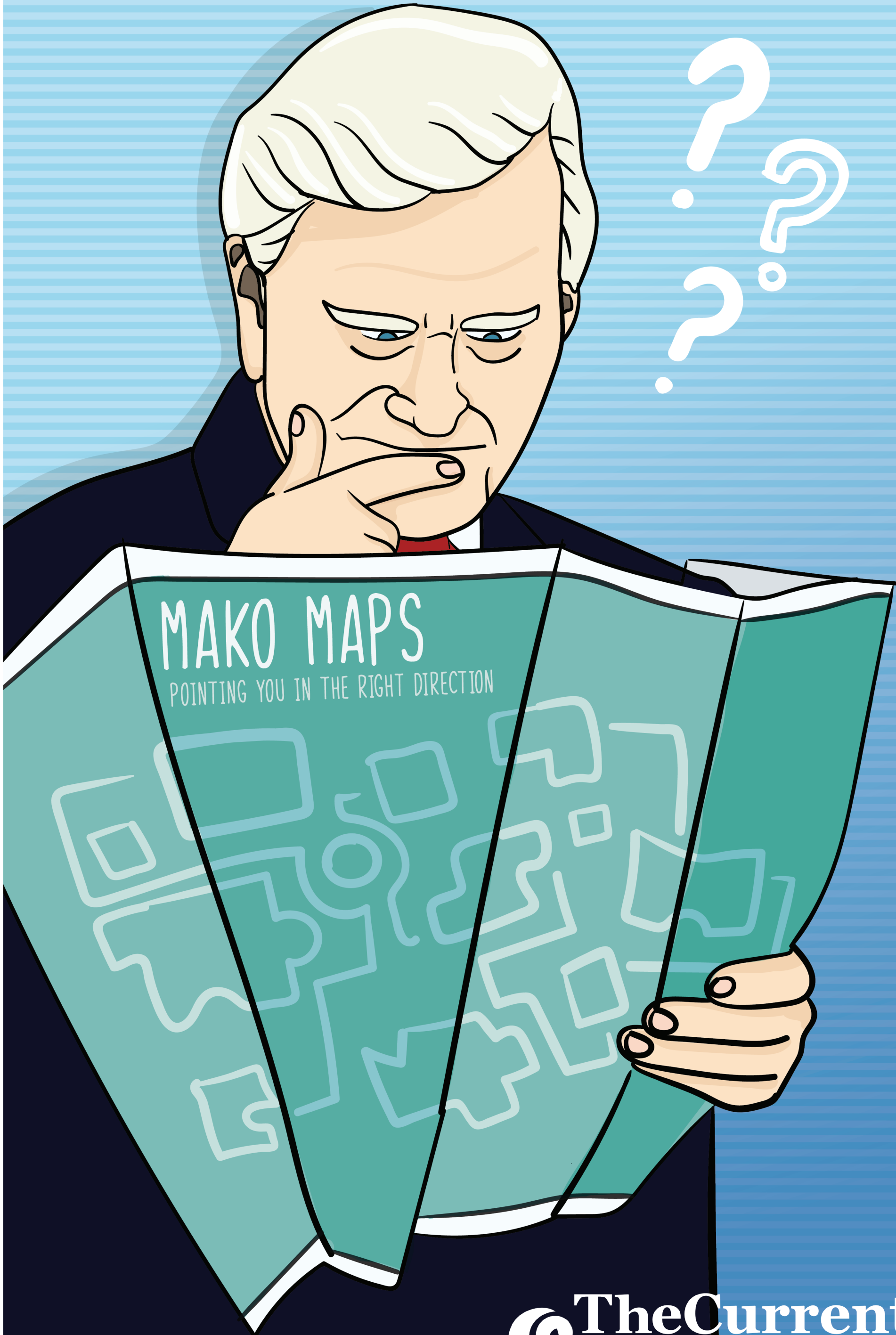
Nova Southeastern University

Follow this and additional works at: https://nsuworks.nova.edu/nsudigital_newspaper

NSUWorks Citation

Nova Southeastern University, "The Current Volume 29 : Orientation Issue-Pullout Section" (2018). *The Current*. 666.
https://nsuworks.nova.edu/nsudigital_newspaper/666

This Newspaper is brought to you for free and open access by the NSU Digital Collections at NSUWorks. It has been accepted for inclusion in The Current by an authorized administrator of NSUWorks. For more information, please contact nsuworks@nova.edu.



MAKO MAPS
POINTING YOU IN THE RIGHT DIRECTION

IMPORTANT PHONE NUMBERS

By: **Jenna Kopec**
Co-Editor-in-Chief

Academic Advising: 954-262-7990

Alvin Sherman Library (Circulation Desk):
954-262-4601

Bookstore: 954-262-4750

Bursar's Office: 954-262-5200

Campus Life and Student Engagement: 954-262-7288

Davie Police: 954-693-8200

ExEL: 954-262-8535

Financial Aid: 954-262-3380



PRINTED WITH PERMISSION FROM J. KOPEC
You when you forget the password to your email account.

Henderson Student Counseling Services:
954-424-6911

Help Desk for technical support: 954-262-4357

National Suicide Prevention Lifeline: 1-800-273-8255

NSU Medical Center: 954-678-2273

Office of Career Development: 954-262-7201

Office of Human Resources: 954-262-4748

Office of Student Media: 954-262-7188

Office of Student Affairs: 954-262-7280

Office of Orientation: 954-262-8050

Public Safety: 954-262-8999

RecWell: 954-262-7301

Residential Life and Housing: 954-262-7052

Student Events and Activities Board: 954-262-7223

University Registrar's Office: 954-262-7200

Tutoring Services: 954-262-8350

Testing Services: 954-262-8374

Writing Center/Writing Fellows: 954-262-4644

STAY HEALTHY WITH NSU CLINICS

By: **Monique Cole and Jenna Kopec**
Contributing Writer and Co-Editor-in-Chief

A student's health plays a vital role in their education. NSU makes it their mission to provide several health clinics that students can utilize throughout the school year to maintain a healthy mind, body and overall well-being.

Audiology Clinic

The audiology clinic aids patients with vestibular - also known as balance - or hearing problems/disorders. The clinic provides hearing evaluations and treatment for both adults and children.

Location: Sanford L. Ziff Center

Hours of operation: Monday through Friday from 8:30 a.m. to 5 p.m.

Contact information: 954-262-7750 or audclinic@nova.edu

Website: healthsciences.nova.edu/audiology/clinic.html

Dental Care

The dental clinic provides a range of services for all ages. The clinic specializes in orthodontics, pediatric dentistry, endodontics, periodontics, oral surgery and prosthetics.

Location: Sanford L. Ziff Center

Hours of operation: Monday through Friday from 8:00 a.m. to 5 p.m.

Contact information: 954-262-7500

Website: dental.nova.edu/clinics

Early Childhood Development

The early childhood development clinic offers positive discipline for children between the ages of one and five, parent coaching and a Starting Right early intervention program for children between the ages of 18-36 months that experience a delay in social or language skills. The Unicorn Children's Foundation Clinic is another sector of the main clinic that provides services for behavioral issues, problems with development and feeding disorders.

Location: Mailman Segal Center

Hours of operation: Monday through Friday from 8:30 a.m. to 5 p.m.

Contact information for Parent Coaching: 954-262-2273

Contact information for Unicorn Children's Foundation Clinic: 954-262-2273 or unicornclinics@nova.edu

Contact information for Starting Right: 954-262-7117 or otheather@nova.edu

Website: nova.edu/healthcare/clinics-services/early-childhood-development.html

Family Therapy

The Family Therapy Clinic - Brief Therapy Institute (BTI) works with anyone in a struggling relationship who is trying to improve their communication skills and help create a stronger and healthier bond within their relationship. Each therapist is trained to work with families or individuals of different cultures, religions and sexual orientations.

Location: Maltz Building

Hours of operation: Monday through Thursday from 9 a.m. to 9 p.m., Friday from 9 a.m. to 5 p.m. and Saturday from 9 a.m. to 3 p.m.

Contact information: 954-262-3030

Website: nova.edu/healthcare/clinics-services/family-therapy.html

Henderson Student Counseling Center

Henderson Student Counseling Services provides help to students with mental health, substance abuse, time management and relationship issues. Henderson offers individual, couple or group counseling and psychiatric care. Each NSU student is provided 10 free counseling sessions each school year. Henderson also takes walk-ins.

Locations: 3440 S. University Drive

Hours of operation: Monday, Thursday and Friday from 9 a.m. and Tuesday and Wednesdays from 9 a.m. to 8 p.m.

Contact information: 954-424-6911

Website: www.nova.edu/healthcare/student-services/student-counseling.html

Optometric Care

The NSU Eye Care Institute clinic provides eye examinations, emergency eye care services, low-vision rehabilitation, geriatric services, and treats patients with eye diseases or eye injuries. The clinic works with patients with pediatric or binocular vision, while providing contact lenses or optical services.

Location: Sanford L. Ziff Center

Hours of operation: Monday through Friday from 8:30 a.m. to 5 p.m.

Contact information: 954-262-4200

Website: nova.edu/healthcare/clinics-services/optometric-care.html

Pharmacy

NSU's pharmacy provides services for filling prescription, offering herbal and nutritional counseling. The pharmacy also provides free screenings to NSU students, employees, and the public on the third Tuesday of every month. Students are required to contact their NSU Student Medical Center physician before getting their prescription filled.

Location: Sanford L. Ziff Health Care Center

Hours of operation: Monday through Friday through 9 a.m. to 6 p.m. and Saturday from 9 a.m. to 1 p.m.

Contact information: 954-262-4550

Website: nova.edu/healthcare/clinics-services/pharmacy.html

Physical Rehabilitation

The clinic provides services when it comes to physical and occupational therapy. Individual rehabilitation programs are developed to help patients with neurologic, orthopedic or systemic disorders, sports injuries or any type of movement disorder.

Location: Sanford L. Ziff Center

Hours of operation: Monday through Friday from 8:30 a.m. to 5 p.m.

Contact information: 954-678-2273

Website: nova.edu/healthcare/clinics-services/physical-rehabilitation.html

Psychological Services

The Psychology Services Center provides services to patients of all ages for adolescent drug abuse prevention and treatment, ADHD assessment consultation and treatment, anxiety treatment center, counseling, intensive psychodynamic psychotherapy, psychological services for the emotionally distressed, trauma resolution integration, lifestyle change programs, intensive psychodynamic psychotherapy, treatment for anxiety, neuropsychology assessment center, a Parkinson's support group and more.

Location: Maltz Building

Hours of operation: Monday through Thursday 9:00am-9:00pm, Friday 9 a.m. to 5 p.m., Saturday 9 a.m. to 1 p.m.

Contact information: 954-262-5730

Website: nova.edu/healthcare/clinics-services/psychology/index.html

Speech-Language Pathology Clinic

The clinic provides evaluation and treatment to those with language, speech and communication delays or disorders. The clinic works with both children and adults.

Location: 6100 Griffin Road, Davie, FL 33314

Hours of operation: Monday through Friday from 8:30 a.m. to 5 p.m.

Contact information: 954-262-7726

Website: nova.edu/healthcare/clinics-services/speech-language-communication.html

Student Medical Center

The student medical clinic provides students with physical examinations, general medical care, immunizations, women's health care, minor surgical procedures and preventive care. There are two locations of the student medical clinic.

Location: Sanford L. Ziff Center

Hours of operation: 8:20 a.m. to 4:20 p.m. During the Fall and Winter semesters, these hours are extended on Tuesday and Thursday to 6:20 p.m., and every other Saturday from 9 a.m. to 1 p.m..

Contact information: 954-262-1262

SMC Website: nova.edu/smc/

More information on making appointments: nova.edu/smc/appointments/index.html

Satellite Location: Don Taft University Center

Hours of operation: Tuesday and Thursday from 1 p.m. to 7 p.m.

Contact information: 954-262-1262

SMC Website: nova.edu/smc/

Health insurance requirements

NSU requires all of its students to have suitable health insurance. NSU offers health insurance through Aetna. However, if a student has another form of insurance and would like to opt out, the student will need to submit a waiver within the designated window of time.

For general health forms, go to nova.edu/healthcare/clinics-services/forms/index.html.

For more information on student health insurance, visit nova.edu/bursar/health-insurance.

ANNUAL EVENTS TO LOOK FORWARD TO



By: Jenna Kopec
Co-Editor-in-Chief

Convocation

Convocation is a celebratory ceremony to recognize the incoming undergraduate class and it marks the beginning of the academic year. New students receive the stole that they'll wear at graduation and their first pin for it. This year convocation takes place on Aug. 17.



PRINTED WITH PERMISSION FROM D.VO

WOW

The Weeks of Welcome, often dubbed WOW, is a collection of events that meant to welcome new and returning students. Although it looks a little different each year, there's usually a variety of events held at various of times. The university typically holds WOW for both fall and winter semesters.

Sharkapalooza

Sharkapalooza is one of the trademark events of WOW during the fall semester and is typically held the Friday of the first week of classes. It takes place in the Rick Case Arena and is basically a culmination of all things NSU. Student organizations, university departments and local businesses table so that students can interact with them, play games, eat free food and participate in giveaways. This is a great place to find clubs or other ways to get involved.

Waterworks

Another signature event of the fall semester WOW, Waterworks is a giant party featuring a DJ, inflatables, water slides and paint. This event is often considered a fan favorite.

Labor Day Pool Party

The Labor Day Pool Party is often considered the end of WOW and takes place at the RecWell pool. The name kind of says it all, but this event is basically a huge party and another option to meet a lot of people.

Commons Haunted House

This is NSU's take on Halloween Horror Nights. Every year the RA's decorate Commons to a certain theme and aim to scare the socks off students. Taking place in October and open to all students, this can be a fun way to get in the spooky spirit.

Homecoming Dance

Homecoming itself is usually at least a week's worth of worthy events in November, but it's trademark event is the Homecoming Dance. It takes place in a local club rented out by the university for the night.

Miss Black Diamond

Miss Black Diamond is a signature philanthropic event from the fraternity FIJI benefitting the Broward Partnership for the Homeless, Inc. The event typically takes place in the the Rose and Alfred Miniaci Performing Arts Center and is set up like a pageant where a group of women from various sororities and clubs compete for the title of Miss Black Diamond.



PRINTED WITH PERMISSION FROM V. SMITH

Mr. Fintastic

Mr. Fintastic is an annual event thrown

by Delta Phi Epsilon that benefits the Cystic Fibrosis Foundation. It's a similar set up to Miss Black Diamond except it's a male pageant.

Battleship

Battleship has become Sigma Delta Tau's signature philanthropic event for Jewish Women International. Student organizations register in teams, then get in boats and try to sink each other in the competition pool.

Stroll Off

The Sigma stroll off is held in the winter semester and benefits autism research. Greek organizations perform strolls in contest with one another.



"Anything that Floats" Raft Race

An NSU staple, the "Anything That Floats" raft race takes place at the end of fall semester at Gold Circle Lake. Students create teams, build rafts out of anything that might float and race each other across the lake to win prizes. This event is traditionally held during homecoming week.

NSU's Got Talent

Modeled after the show "America's Got Talent," this competition takes place near the end of winter semester. Students can perform various talents in front of judges or an audience to win money. Contestants can be given an "X" by the judges if performances don't go well though.

Communityfest

Ocurring every February, CommunityFest is all about connecting the university with the — you guessed it — community. Clubs, organizations and local businesses create booths that give out free food and prizes and often include games.

STUEYs

The Student Life Achievement Awards, or STUEYs, take place in the winter semester and is a formal affair. This award ceremony celebrates individuals and organizations who exemplify the core values of NSU.

Undergraduate Student Symposium

The Undergraduate Student Symposium is a showcase of undergraduate student work from research to film projects. Students have the opportunity to display their products to faculty and professionals and also to win prizes.



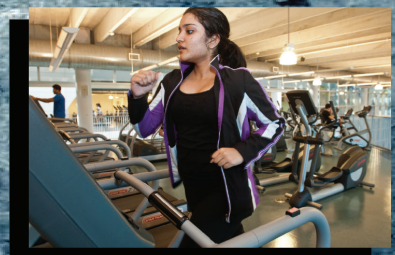
PRINTED WITH PERMISSION FROM D.VO

Relay for Life

Relay for Life is a 12-hour event that supports cancer research. Many clubs make booths and sell items in order to raise money and show solidarity.

NOVA SOUTHEASTERN UNIVERSITY RECREATION & WELLNESS

FITNESS & WELLNESS • AQUATICS INSTITUTE • INTRAMURAL SPORTS • OUTDOOR ADVENTURES
CLUB SPORTS • OPEN RECREATION • BIKE SHARE PROGRAM



FINDING YOUR WAVE AT NSU

By: **Michaela Greer**
Co-Editor-in-Chief

So, you've found your way around campus, noted the best places to "gill" out and have an amazing relationship with your "reefmate." Still, aside from classes, there's a lot to do at NSU and many opportunities to get involved. NSU prides itself on being a diverse and inclusive college, it's only appropriate that we have an abundance of clubs, organizations and societies to choose from. Jumpstart your search by checking out the list below.

Descriptions are based on each organization's OrgSync page.

ACADEMIC AND EDUCATIONAL

Some organizations work toward developing students in their academic endeavors. Here are organizations NSU offers.

Association for Computing and Machinery
As part of the world's largest educational and scientific computing society, this organization works to share resources and foster professional growth for students interested in computer science.

Association for Information Systems
Part of an international organizations, this chapter works toward providing networking, community development and professional growth opportunities for the field of information systems.

Chemistry Club
This club aims to share their love of chemistry with the NSU community. They also provide experience in experimentation and fostering awareness for the responsibilities of a modern chemist.

Exercise Science Student's Organization
This club aims to provide a bond between students interested in Exercise and Sports Science, prepare students for graduate programs, expose students to employment opportunities and expose students to information and strategies to build a foundation in the area of movement sciences.

Psychology Club
This organization works to expand student knowledge in the field of psychology and participate in a variety of on-campus activities.

The Investment Club
This organization analyzes the economic and financial markets and discusses investment ideas and strategies.

Arts and media
If you're looking to express yourself artistically, there might be a club at NSU to help inspire you.

Achieving Reform Through Imagination, Strength, and Talent (ARTIST)
ARTIST's goal is to increase awareness of social issues through art, including music, drawing, photography, painting, dance, writing and sculpture.

Infinite Motion
Infinite Motion's mission is to promote community service through dance and to teach students about different dance styles and their origins and cultures.

Lens Up! NSU Sharkshooters
This organization uses photography to capture the lives of students and cultivate members' photography skills and portfolios.

Open Expressions
This club encourages artists of all fields, serving as an environment where artistic students can express themselves and receive feedback on their work.

The Riff Tides
This co-ed acapella group performs on and off campus, competing annually in the International Championship of Collegiate Acapella and promoting involvement in the arts.

COMMUNITY SERVICE

Community service is more than just something that looks good on your college application – NSU offers ways to give back to those in need through a number of organizations.

Best Buddies
Best Buddies creates friendships by matching college volunteers with individuals with intellectual and developmental disabilities.

Cozy Corners
Through fundraising and donations, this student organization redecorates the rooms of children who have been in the hospital or fighting disease.

Habitat for Humanity
This organization works with Habitat for Humanity International to build houses for low to very low-income families.

Locks for Cause
This club focuses on cancer awareness, fundraising, participating in cancer walks and volunteering in hospitals.

Make a Meal
By partnering with organizations like Broward Outreach and Stop Hunger Now, this group works towards ending hunger and thirst globally.

MAKO Rangers
Through activities like visiting hospitals in Power Ranger suits and hosting other fundraising activities, this club's mission is to make children smile.

MEDLIFE
Medicine Education and Development for Low Income Families Everywhere, or MEDLIFE, is a student organization that helps families in severe poverty to live healthier lives.

Operation Smile Club
This student fundraising organization financially supports and raises awareness for Operation Smile, which provides cleft lip and cleft palate surgery for free for children worldwide.

Relay for Life at Nova Southeastern University
This student group plans the annual Relay for Life, an annual overnight fundraising event and walk to support the American Cancer Society.

Rotaract at NSU
This community service group organizes service projects and social events to better the community, develop professionally, and encourage teamwork and networking.

FAITH-BASED

If you want to find a support group of people who share the same religious beliefs as you or learn about new ideas and worldviews, consider joining one of the faith-based clubs on campus.

ABLAZE
ABLAZE is a non-denominational Christian group that focuses on prayer, service, accountability and outreach. ABLAZE is open to all students, regardless of their beliefs.

Catholic Living in Faith Everyday (Catholic L.I.F.E.)
Catholic L.I.F.E. is the Catholic church campus ministry connected to the Archdiocese of Miami. Their mission is to promote fellowship through unity on campus.

Every Nation Campus Ministries
This non-denominational Christian organization is an outreach of SouthCoast Church, and its mission is to assist NSU students, faculty and staff in their relationship with God. The organization is open to people of any gender, race and denomination.

Greenhouse Campus Ministries
This Christian organization's goal is to help students cultivate their relationship with God, Jesus, and other students. Greenhouse Campus Ministries is open to all NSU students and does not discriminate based on sex, sexual orientation, political and religious beliefs or affiliation, age, handicap or race.

Hillel of Broward and Palm Beach
Hillel supports Jewish students in their spiritual, intellectual and social growth, providing opportunities for Jewish NSU students to explore their Jewish identity.

International Muslim Association at Nova Southeastern University (IMAN)
IMAN's mission is to spread awareness and knowledge about Islam through activities that align with Islamic traditions. IMAN does not discriminate based on race or religion.

Orthodox Christian Fellowship
This Orthodox Christian organization's goal is to encourage fellowship on campus, educate Orthodox Christian students and other interested students about Orthodox heritage, and be involved in community service projects.

GREEK LIFE

There are 14 fraternities and sororities at NSU. Each uphold unique beliefs, so be sure to talk to any of the students involved in these organizations during the your orientation, the Weeks of Welcome (W.O.W.) events, or Rush Week to sign up for any events you're interested in.

Alpha Kappa Alpha Sorority Inc., Sigma Chi Chapter
This sorority aims for high academic and

moral standards. It also works to promote friendships among NSU women, help alleviate women's issues and serve all.

Beta Theta Pi
This fraternity aims to build men of principle. The fraternity works to promote lifelong brotherhood and responsibility.

Delta Phi Epsilon
This sorority believes in sisterhood above all else. Delta Phi Epsilon is dedicated to their founding principles of dedication, pride and excellence.

Iota Phi Theta
This fraternity serves as a support system for men of color. The organization's purpose is to develop scholarship, citizenship, leadership, fidelity and brotherhood.

Kappa Alpha Psi
This fraternity was created in 1911 as a way to respond to the obstacles faced by African American men who chose to attend college. Today the organization states its fundamental purpose as achievement.

Kappa Sigma
The fraternity focuses on developing the four pillars: scholarship, fellowship, service and leadership. Kappa Sigma is one of the largest fraternities on NSU's campus.

Lambda Theta Alpha
This sorority describes itself as the divas of the south. Lambda Theta Alpha is the first Latin sorority in the nation, and focuses on the core values of unity, love and respect.

Phi Beta Sigma
This fraternity finds pride in its dedication to academic excellence and service. Phi Beta Sigma exemplifies brotherhood, service and scholarship.

Phi Delta Theta
Phi Delta Theta strives to recruit members with high moral character and dedication to education. The fraternity also focuses on leadership development.

Phi Gamma Delta
Commonly referred to as FIJI, the fraternity aims to reach excellence through friendship, knowledge, service and morality.

Phi Sigma Sigma
Phi Sigma Sigma is built on the belief that women of different religions, cultures, backgrounds and viewpoints can make a difference by working together. They aim to advance each sister in personal development along with the organization as a whole.

Sigma Delta Tau
This sorority prides itself on the idea of quality of quantity and bettering the college experience for its members. According to their page, sisters work to form long lasting relationships and can often be found together.

Theta Phi Alpha
This sorority seeks to create close relationships, advance educational, social and philanthropic interests and adhere to high moral standards.

Zeta Phi Beta

This sorority's purpose is to foster the ideas of sisterhood, service, charity and cultural endeavors, scholarship and finer womanhood. They donate to a variety of causes that assist those in need.

LEADERSHIP

NSU also offers leadership development organizations.

Undergraduate Student Government Association (SGA)

SGA acts as the voice of the student body. Elected by peers, the SGA officials work toward learning and improving upon the concerns of the student body.

Collegiate DECA

This club offers students who wish to pursue careers in marketing, finance, hospitality and management a chance to improve their skills. This club also partakes in networking and competition opportunities.

Davie Sharks Toastmasters

This club offers students the chance to improve their public speaking skills. Members work together to evaluate each other's performances and create suggestions on how they can improve.

Great Minds Entrepreneurship

This club seeks to gather individuals to share ideas and develop an entrepreneurial mindset.

MULTICULTURAL

Whatever your background, NSU has a special place for you – and for those just like you.

Black Student Union

This organization's goal is to celebrate black culture and host events that promote unity among NSU students. Their mission is to encourage activism and cultural awareness.

Caribbean Student Association

This organization's purpose is to help Caribbean students feel more at home in the U.S. and to educate the campus about different Caribbean cultures.

Haitian Student Association

The Haitian Student Association's mission is to gather students of Haitian descent, promote Haitian cultural awareness and acceptance of all cultures.

Indian Student Association

The Indian Student Association's goal is to promote Indian culture and traditions at NSU representing various Indian regions and states.

Nova International Student Association

This association seeks to gather students from different backgrounds to support diversity in the community, cultural awareness and cultural acceptance.

Maasti Dance Team

This performance-based club trains in all styles of Indian dance, including Bollywood, fusion, classical, bharatanatyam and bhangra. Their focus is to bring more awareness of Indian dance to NSU and the community.

Pakistani Student Association

This multicultural club seeks to bring together students of Pakistani descent, hosting cultural and social events to educate the community about Pakistani culture and values.

PRE-PROFESSIONAL

If you want more hands-on experience in the field you see yourself in after graduation – even though it might seem like light years away – definitely check out one of the many pre-professional organizations on campus.

Accounting Club

This organization's goal is to host educational and fun activities to expose its members to information on careers in accounting, help them network with accounting students and faculty.

Alpha Kappa Psi

This co-ed business fraternity seeks to develop business leaders who are ethical, resourceful and skilled.

Athletic Training Student Organization

This club focuses on connecting students who are interested in athletic training with Allied Health Care Professionals.

Business of Sports Student Association

This club connects students interested in careers in sports and recreation, providing social and professional advancement opportunities.

HOSA: Future Health Professionals

HOSA, or Health Occupations Students of America, focuses on community service and assisting students in health professions prepare for their future careers.

International Business Student Organization

This is a student-run organization which aims to foster a community of students who will work together to learn how to conduct business matters.

Junior Peds

Junior Peds is the undergraduate pediatric organization. It focuses on helping students learn more about the career and offers its members volunteer opportunities.

Legal Society Club

This club offers pre-professional experience in law, but it is open to all majors. The club is dedicated to enhancing knowledge on legal practices and enhancing professional skills.

Neuroscience Club

This club seeks to educate both its members and the community about the importance of the brain.

Pre-Dental Society

This organization's goal is to help students who are interested in dentistry gain access to helpful knowledge and resources and improve their dental school applications.

Pre-Medical Society

This group seeks to help students achieve their goals in the medical field and educate them about issues related to medicine through hands-on learning and service.

Pre-Optometry Society

The Pre-Optometry Society educates its members and the community on the necessity of taking care of vision and promotes the optometry field.

Pre-Pharmacy Society

This group's goal is to provide information, resources and opportunities to students who want to pursue a career in pharmaceutical medicine.

Pre-Physician Assistant Society

This society helps students who are interested in applying to Physician Assistant school,

holds community service activities and promotes Physician Assistant careers.

Pre-Student Osteopathic Medical Association

This association promotes osteopathic philosophy, informs the community about osteopathic medicine and helps prepare members for osteopathic medicine careers.

Pre-Veterinary Club

This organization connects students at NSU interested in veterinary medicine with each other and individuals in the field, and helps them with the process of applying to veterinary school.

Phi Alpha Delta

This organization is an international pre-law fraternity. It is a co-educational fraternity that helps inform and help students make decisions who are interested in a career in law.

Society of Professional Journalists

This organization is dedicated to creating a climate where multimedia journalism can be practiced by equipping students with real-world knowledge of the ethics and values needed to succeed as industry professionals.

Undergraduate Economics and Finance Association

This business-focused student organization's mission is to expose its members to real-world businesses and business leaders in various industries.

SPECIAL INTEREST

For those who have very specific interests or are just looking to find a niche, check out some of the student clubs below.

American Association of University Women

This is a national organization that works toward the equality of women through advocacy, education, philanthropy and research. The club also has an alliance with PACE school for girls to mentor young girls.

Boxing Club

The purpose of this club is for students to learn about boxing and training while bonding.

Campus Cursive

This student club, a college extension of More Love Letters, focuses on positivity by posting encouraging notes around campus and hosting events and activities with the goal of spreading love.

Commuter Student Organization

This group represents commuter students at NSU, aiming to provide them with opportunities to develop through leadership and community service.

Fitwell Fitness and Wellness Organization

This organization aims to promote fitness and wellness through the NSU community by gathering information and forming interactive, educational experiences.

Green Sharks - The Student Sustainability Club

Green Sharks' goal is to educate the NSU community on sustainability and advocate for more sustainable practices on campus.

Longboard Club

The Longboard club aims to create a safe environment for NSU students to learn and practice longboarding.

Med-ED

This club seeks to act as a liaison to medical schools that students may wish to pursue in the future. It also works to create awareness about popular medical techniques in the field.

Nature Club

This student organization advocates for a more environmentally-friendly campus and organizes activities to get students outside and interacting with nature.

Pride Alliance

This student group aims to create a safe place for LGBTQ+ students and educate the NSU community about LGBTQ+ issues.

Scuba Crew at NSU

This club's members work on their scuba and snorkeling skills, often in conjunction with classes through NSU aquatics.

Society of Anime and Gaming (S.A.G.E.)

This club, known as SAGE, consists of a group of students who are interested in anime, gaming, movies and other forms of entertainment.

Sound Gaze

This organization's focus is to bridge the gap between the hearing and deaf communities. They work with American Sign Language and apply it to music as well as learn about deaf culture.

The C.H.E.E.S.E. Club

An acronym for Creating Hope, Encouraging Education and Striving for Excellence, this club uses their past experiences to mentor local high school students in the area.

Vegetarian and Vegan Club

This club works toward supporting the vegetarian and vegan population with educational and social events. They also take part in community outreach, activism and fundraising.

WYRD

This is a book club that aims to unite people through the reading of literature, while providing an outlet for creativity and critical thinking.

YESPlus Meditation and Yoga Club

This organization offers practical tools and techniques for stress management, personal resilience and leadership success.

For a more comprehensive list of all organizations, clubs and committees, be sure to log on to orgsync.com with your NSU email for information such as meeting times, locations, contact information and much more.

The Tutoring and Testing Center is proud to offer the following services:

Tutoring Across Campus



Student Affairs Building, 2nd Floor
Mondays through Fridays
By appointment, hours vary



Leo Goodwin Sr. Residence Hall, 1st Floor Classroom
Tuesdays, 8:00–10:00 p.m.
Drop-in tutoring, no appointment necessary



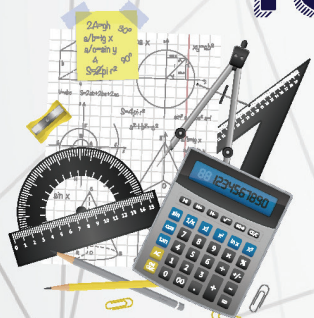
Alvin Sherman Library, Lab A, 2nd Floor
Wednesdays, 8:00–10:00 p.m.
Room 4009
Saturdays, 10:00 a.m.–1:00 p.m.
Drop-in tutoring, no appointment necessary



The Commons Residence Hall, Room 113
Thursdays, 8:00–10:00 p.m.
Drop-in tutoring, no appointment necessary

Courses available for drop-in hours vary by tutor. For a complete list of courses we tutor, please visit our website. Dates and times may vary, please check back to see updated times, schedules, and locations throughout the semester.

Tutoring in the following subjects:



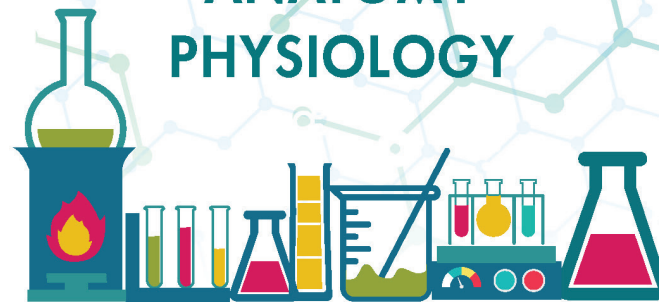
**ALGEBRA,
STATISTICS,
CALCULUS,
AND
TRIGONOMETRY**



AVAILABLE COURSES:

**SPAN 1210
SPAN 1220**

**BIOLOGY
CHEMISTRY
ORGANIC CHEMISTRY
PHYSICS
ANATOMY
PHYSIOLOGY**



Other academic support resources are also available which include Test Prep, Academic Coaching, and Reading Skills Enhancement

Supplemental Instruction



is a peer-led student enrichment program that offers free, weekly, outside of class group study sessions for select historically difficult courses.

These study sessions are facilitated by SI Leaders who are nominated by faculty for their leadership ability and content mastery.

For more information, contact us at siprogram@nova.edu or (954) 262 8391.

Follow us @nsu_si



Tutoring and Testing Center

(954) 262-8350 @NSUTTCenter www.nova.edu/tutoring-testing

LEARN TO SPEAK SHARK



By: **Christina McLaughlin**
Opinions Editor

At NSU, we have our own “Shark language.” Here are a few translations of some of the common lingo we use around campus.

Shark Circle: The roundabout in front of the University Center that has the Shark Fountain in the middle.

Library Quad: The plot of land directly adjacent to the Alvin Sherman Library, used for events like Waterworks.

The Pit: The sunken-in area of the UC where students can study, eat and participate in events.

UC: The Don Taft University Center

UC Spine: The center hallway of the University Center where events like SEA Thursday and Job Fairs take place.

Fins Up: The signature pose for NSU where the participant stretches their arms above their head, clapping hands together.

DeSantis: The Carl DeSantis Building aka the business school

Goodwin: The Leo Goodwin Sr. Residence Hall available for undergraduate freshman housing.

Commons: The Commons Residence Hall available for sophomores and Razor’s Edge student housing.

Cabanas: The Flight Deck outdoor swings and seating area.

Flight Deck lawn: The grass area outside of Flight Deck in between the outdoor seating area.

PVA: The Performing and Visual Arts wing which is found on the second floor of the UC and features areas like the Black Box Theatre and Gallery 217 on the second floor. Many visual art, theatre and film courses are conducted in this wing.

SAB: The Student Affairs Building which holds the Office of Student Affairs, The Office of Student Media and the Tutoring and Testing Center.

ExEL Units: experiential units or credits that are required for graduating distributed by the Career Development Office

DB: Declining balance which is found on your SharkCard that is swiped for any food item on campus.

SEABoard: The Student Event and Activities Board that organizes events that students can participate in to get involved on campus.

SEA Thursday: The SEA Board-sanctioned event which features clubs and other organizations on campus where you can join and get free swag.

RecWell: The Recreational and Wellness Center, located inside the UC on the left side of the building where the gym and other rooms for fitness can be found.

Commons Pagoda: The outdoor space outside Commons and between FFV, or Founders, Farquhar and Vettel residence halls, where barbecues, umbrellas and covered seating as well as a volleyball court are housed.

HPD: The Health Professions Division which houses offices for medical faculty, the dental building, dental clinic, the NSU Pharmacy and the NSU Student Medical Clinic.

N number: The number given to students that starts with an N and ends with eight numbers. Ex: N01234567. This number is used for various forms and other activities on campus.

Outtakes: The small store next to the UC Dining Area where you can purchase snacks, drinks, medical and other supplies.

RA: The Residential Assistant which is on every floor and sometimes sections of the residential hall to help students with numerous problems involving on-campus housing facilities.

RSO: An on-campus registered student organization.

SharkCard: The card that functions as your ID on campus which can be used to access your printing, dining and other information.

UPP: The University Park Plaza which is located across from the HPD that holds the Henderson Student Counseling center as well as classrooms and other NSU buildings.

SUTV: The Sharks United Television network available on cable channel 96 which features original shorts as well as recently released films.

SharkLink: The online platform which connects students to academic records, financial aid documents and other important links to a variety of useful platforms.

SharkLearn: The Blackboard link which is used to submit assignments and other works online in conjunction with classroom activities. (However, as of Fall 2018, NSU will transition to the Canvas platform).

Convocation: The welcoming ceremony for new NSU students.

WaterWorks: The annual event which involves music, games and water fun.

Weeks of Welcome (WOW): The first few weeks of the semester which welcome NSU students back to campus for the fall and winter semesters.

Sharkapalooza: The annual event which features performances, giveaways, music and other fun activities.

SLCE (pronounced “slice”): The Office of Student Leadership and Civic Engagement empowers students to get involved in leadership and service-based educational opportunities to promote critical thinking and inspire students to get involved in their local communities

Where to Eat

- University Center Food Court:** 2.mato, create, rooted, grillnation, HOME COOKING, MOND SUBS, greens, myPantry
- Terry Administration Building:** HPD café, SHARK GRILLE, SUBWAY, ON THE GO, greens, ROMA ITALIAN CUISINE
- Don Taft University Center:** Starbucks, JUICE BLENDZ, Outtakes
- HPD Library:** JUICE BLENDZ
- Parker Building:** ON THE GO
- Alvin Sherman Library:** West End Ave, DELI, ON THE GO
- Goodwin Hall (College of Law):** SUPREME COURT CAFE
- DeSantis Building:** EINSTEIN BROS BAGELS

Shark DINING

@SharkDining Shark Dining Shark Dining @SharkDining

www.dineoncampus.com/nova

Looking for a
FUN
Night Out?



Come create your *Very Own*
MASTERPIECE!

Pick a date and a painting that fits your schedule. Don't forget to invite your friends too.



Make sure to bring your favorite type of beverage and paint along with a local artist!



They will show you step-by-step how to paint your own beautiful work of art.

We provide the canvas, paint and brushes for a fun-filled evening with friends!
Amateurs welcomed!

SIGN UP or BOOK YOUR PARTY TODAY!

Private Parties • Children's Birthday Parties
Bachelorette Parties • Bridal Showers • Bridal Luncheons
Couples Nights • Office Parties • Team Buildings

Painting
with a **Twist**

www.paintingwithatwist.com/davie

(954) 533-6181

5810 S. University Drive Suite 106
Davie, FL 33328

Painting with a **Twist**

www.paintingwithatwist.com/davie

5810 S. UNIVERSITY DR.

DAVIE FL. 33328