

1993

Master's Program in Speech-Language Pathology 1993-1994 Catalog

Nova University

Follow this and additional works at: https://nsuworks.nova.edu/abe_pgcoursecatalogs

 Part of the [Education Commons](#)

NSUWorks Citation

Nova University, "Master's Program in Speech-Language Pathology 1993-1994 Catalog" (1993). *Fischler Postgraduate Course Catalogs*. 386.

https://nsuworks.nova.edu/abe_pgcoursecatalogs/386

This Course Catalog is brought to you for free and open access by the NSU Course Catalogs and Course Descriptions at NSUWorks. It has been accepted for inclusion in Fischler Postgraduate Course Catalogs by an authorized administrator of NSUWorks. For more information, please contact nsuworks@nova.edu.



MASTER'S PROGRAM IN SPEECH-LANGUAGE PATHOLOGY

1993-1994 Catalog

Includes Application and Admissions Forms

ABRAHAM S. FISCHLER CENTER FOR
THE ADVANCEMENT OF EDUCATION

MASTER'S PROGRAM IN SPEECH-LANGUAGE PATHOLOGY

1993-1994 Catalog

*Volume 13
July 1993*

Policies and programs set forth in this catalog become effective July 1, 1993. Regulations and requirements, including fees, are necessarily subject to change without notice at any time at the discretion of the Nova University administration.

The University recognizes that individual programs require differing time limits for the completion of academic studies leading to a degree. Therefore, the time frame is a matter within the discretion of each academic program. All program/center catalogs, bulletins, and handbooks must carry this information.

Nova University is accredited by the Commission on Colleges of the Southern Association of Colleges and Schools to award bachelor's, master's, educational specialist, and doctoral degrees. Nova University admits students of any race, color, sex, age, nondisqualifying handicap, religion or creed, or national or ethnic origin.

Nova University is a member of the American Association of Colleges for Teacher Education.

The Speech-Language Pathology Program is accredited by the Educational Standards Board of the American Speech-Language-Hearing Association.

President's Message

Nova University has distinguished itself as an innovative, student-oriented private institution. The University's growth in just over a quarter-century has been remarkable, and equally impressive are its ambitious plans for expansion of both its academic programs and physical plant.

Several new construction projects on the main campus in Fort Lauderdale have recently been completed, including the Law Center's Leo Goodwin, Sr., Hall; a new dormitory; a state-of-the-art science laboratory; a central services building; and additions to the student center, the University School, and the Ralph J. Baudhuin Oral School. Nova has an exciting new "look"—in keeping with a progressive institution conscious of its commitment to future generations and its role in society.

At a time when many universities and colleges are experiencing funding constraints and cutbacks, it is heartening to know that Nova is prospering and looking to the future. Among the reasons for this growth is Nova's adherence to its mission of educating professionals in an ethical manner, while placing the student at the center of the educational process.

With an outstanding faculty, new facilities, and dedicated trustees and administrators, Nova is well positioned to continue its expansion into the 21st century.



*Stephen Feldman, Ph.D.
President
Nova University*



ASHA President, Ann Carey, attends Dedication Ceremony.

The University

NOVA UNIVERSITY is an independent, nonsectarian, nonprofit university chartered by the state of Florida in 1964. It is located on a 200-acre main campus west of Fort Lauderdale at 3301 College Avenue in Davie, 10 miles inland from the Atlantic Ocean and easily accessible from major highways, including I-75, I-95, I-595, the Sawgrass Expressway, and Florida's Turnpike. Additional locations are in downtown Fort Lauderdale, Coral Springs, and Port Everglades. Its nine centers of study offer campus-based undergraduate and graduate programs leading to degrees in education, law, psychology, oceanography, computer sciences, social sciences, and business and public administration. As an acknowledged leader in field-based degree programs, Nova offers courses of study leading to the bachelor's, master's, educational specialist, and doctoral degrees in education, in business and public administration, in psychology, and in physical, social, and computer sciences.

The Family and School Center is a community resource that provides education and therapeutic services for families and their children. The center comprises three units: the University School, the Ralph J. Baudhuin Oral School, and the Family Center. The University School is a demonstration school serving children from preschool through high school, preparing them in the upper grades for college. The Baudhuin Oral School provides programs for children with specific learning needs and/or hearing disabilities. The Family Center provides a spectrum of family-related programs designed to promote positive interaction between parents and children.

From the beginning, the University has distinguished itself by its innovative outlook, its unique programs that provide both traditional and nontraditional choices in educational programs, and its research in many fields aimed at solving problems of immediate concern to mankind.

Nova University's centers and programs share a common mission—to educate students for leadership roles in a variety of professions, such as law, education, psychology, business and public administration, oceanography, and computer and information science. In the Nova University educational continuum, preprofessional training begins as early as the University School, continues through the college level, and culminates in the various centers for professional studies. Through the Nova University Educational Plan, students master

appropriate skills and disciplines at each academic level, develop a sense of professional ethics and responsibility, and learn to appreciate the role of the professional as a key individual in society.

"The Nova Plan" stresses the critical relationship between theory and practice; it reinforces and tests the classroom experience through applied research and community service as integral parts of academic experience. Consistent with its mission, Nova University extends its resources to provide educational opportunities to working professionals nationwide, with faculty teaching at corporate and other locations across the country. Nova also delivers programs through a variety of educational technologies, including telecommunications. Nova University is committed to the idea that education should not be timebound or placebound. Through its educational offerings, research projects, and programs of public service, the University encourages the free exchange of ideas and the search for knowledge that is the cornerstone of the academic tradition.

Mission Statement

Nova University provides educational programs of distinction from prekindergarten through the doctoral level at times and in locations convenient to students, prepares students for leadership roles in business and the professions, encourages research and community service, and fosters an atmosphere of creativity and innovation utilizing technology where appropriate.

Come to our campus offices or call toll free for program information:
8:30 A.M. - 5:00 P.M., Monday-Friday

Broward County, Florida 475-7094

Dade County, Florida 940-6447, Ext. 7094

United States and (800) 986-3223,
Canada Ext. 7094

Dean's Message

The speech language program at Nova University is a dynamic one emphasizing clinical practice and applied research. The new LaBonte Institute for Hearing, Language, and Speech is a state-of-the-art clinical, teaching, and research facility providing space and resources where students integrate theory with practice. Nova University is committed to adult learners, many of whom are seeking degrees in this field as a second career. Flexible course schedules during days, evenings, and summers are designed to be responsive to our students.

As you consider possible graduate programs, feel free to contact our faculty, students, and graduates. They will give you a complete picture of the program's comprehensiveness, quality, and relevancy to practice.

Good luck with your graduate studies and career. Thank you for considering Nova University and its Master's Program in Speech-Language Pathology.



*Richard Goldman, Ph.D.
Dean
Abraham S. Fischler Center
for the Advancement of Education*



Jack and Bernice LaBonte at Dedication.

The Abraham S. Fischler Center for the Advancement of Education

The Abraham S. Fischler Center for the Advancement of Education is dedicated to the training and continuing support of teachers, administrators, trainers, and others working in education and related helping professions. These practitioners serve as the bridge between the knowledge base in education and the quality of education experienced by their students. The Center hopes to fulfill its commitment to the advancement of education by serving as a resource for practitioners and by supporting them in their self-development.

In accomplishing its mission, the Center offers educational programs designed to meet the needs of the practitioner and makes a special commitment to provide educational programs in those geographic areas in which there are few resources for the training and professional support of practitioners.

Because of its commitment to the working professional, the Center offers alternative delivery systems for education that are adaptable to practitioners' work schedules and locations. Center programs reflect and anticipate the needs of practitioners to become more effective in their current positions, to fill emerging roles in the education field, and to be ready to accept changing responsibilities within their own organizations. The Center also aids professional educators in achieving personal goals, including certification requirements.

The Abraham S. Fischler Center for the Advancement of Education offers:

At the doctoral level—

Ed.D. in Adult Education
Ed.D. in Child and Youth Studies
Ed.D. in Computing and
Information Technology
Ed.D. in Educational Leadership
Ed.D. in Health Care Education
Ed.D. in Higher Education
Ed.D. in Vocational, Technical,
Occupational Education

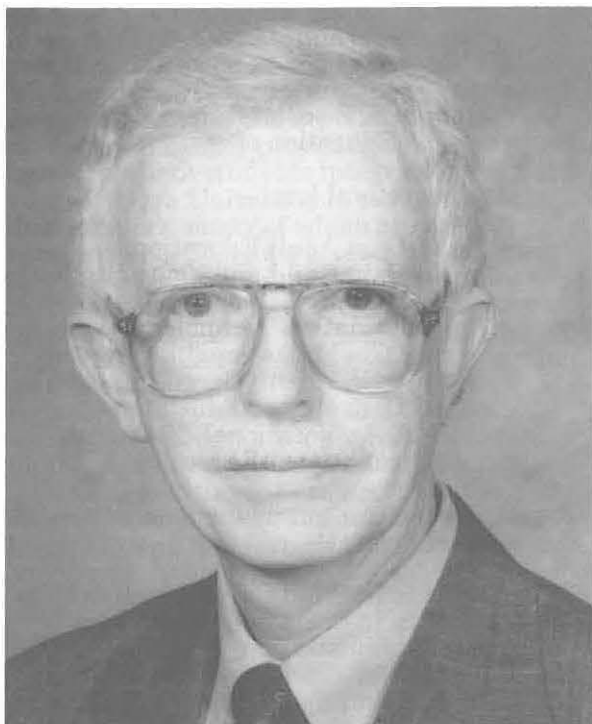
At the master's or educational
specialist level—

M.S. in Child Care Administration
M.S. in Child and Youth Care
Administration
M.S. in Elder Care Administration
M.S. in Family Support Studies
M.S. in Speech-Language
Pathology
The GEM Program, M.S. and
Ed.S. for teachers



Graduate students participate in Dedication.

Director's Message



*Jack R. Mills, Sc.D.
Program Director
Master's Program in Speech-Language
Pathology*



*Thelma Albritton, M.Ed.
Associate Director
Master's Program in Speech-Language
Pathology*

The 1993-94 academic year marks the tenth year for Nova's master of science program in speech-language pathology. Our graduates hold responsible positions in public schools, hospitals, and private practices. The comprehensive academic and clinical curriculum is consonant with the University's mission to educate graduates for leadership roles. The success of our graduates within the professional community attests to the success of the program.

If you elect to pursue a graduate degree in speech-language pathology, you are preparing

yourself for a profession related to the fields of education, medicine, and psychology. The faculty in speech-language pathology is committed to providing you with a balance between scientifically-based information and clinical application. The graduate program is designed to provide you with the critical thinking skills necessary for the management of individuals with communication disorders. Faculty members are available to assist you with individual program planning for your graduate studies. Contact the graduate program office to request an appointment and interview.

Program Faculty



**ELANE FRIEDEL, M.S.,
CCC-A**
Coordinator of Internships
Audiologist



**FRAN FRIEDMAN,
M.A., CCC-SLP**
Senior Lecturer



**JOSEPH F. GONZALEZ,
Ph.D., CCC-SLP**
Coordinator of
Curriculum/Research



**MONA GRIFFER,
M.S., CCC-SLP**
Clinical Supervisor



**DIANE GUPTA, M.A.,
CCC-SLP**
Clinical Supervisor/
Speech-Language
Pathologist
Baudhuin Oral School



**EDIE HAPNER, M.S.,
CCC-SLP**
Clinical Supervisor



**BETH HEUSER-
ASEERE, M.S., CCC-SLP**
Academic Adviser



**BRIAN D. HUMPHREY,
M.A., CCC-SLP**
Clinical Supervisor



**NANCY MAHECHA,
Ph.D., CCC-SLP**
Program Professor



**WREN NEWMAN,
M.S., CCC-SLP**
Clinical Supervisor



**BARBARA PACKER,
M.S., CCC-A**
Coordinator of Audiology



**DANIEL PALMERI, M.A.,
CCC-SLP**
Senior Lecturer



**ARLENE SMITHERMAN,
M.S., CCC-A**
Staff Audiologist



**SHELLY VICTOR, M.A.,
CCC-SLP**
Coordinator of
Communication
Disorders Clinic



FRANK B. WILSON, Ph.D.
Distinguished
Visiting Professor



**MONICA WOJCIK, M.A.,
CCC-SLP**
Senior Lecturer

Not Pictured:

NANCY DILLINER, M.S., CCC-SLP
Clinical Supervisor

MARDY HALL, M.A., CCC-SLP
Site Coordinator, Fort Pierce

ROBIN PARKER, M.S., CCC-SLP
Clinical Supervisor

Program Support Staff



SARAH C. FLEMING
Assistant to the Director



ALICE NICHOLSON
Clerical Assistant



MARILYN RUSSO
Coordinator of Billing
Communication Disorders
Clinic



ELISA SERIO
Administrative Assistant
Communication Disorders
Clinic



MARILYN SHAFFER
Clerical Assistant



PAULETTE SMELLIE
Clerical Assistant
Communication Disorders
Clinic

Contents

| | |
|---|------|
| PRESIDENT'S MESSAGE | ii |
| THE UNIVERSITY | iii |
| DEAN'S MESSAGE | iv |
| THE ABRAHAM S. FISCHLER CENTER FOR THE ADVANCEMENT OF EDUCATION | v |
| DIRECTOR'S MESSAGE | vi |
| PROGRAM FACULTY | vii |
| PROGRAM SUPPORT STAFF | viii |
| MASTER'S PROGRAM IN SPEECH-LANGUAGE PATHOLOGY | 1 |
| Program Objectives | 1 |
| Admissions | 2 |
| Degree Requirements | 3 |
| Policies Governing Academics | 3 |
| Advising and Registration | 4 |
| Evaluation of Academic and Clinical Progress | 5 |
| Financial Information | 6 |
| Refund Policy | 7 |
| New Policy | 7 |
| Speech-Language Pathology Courses | 8 |
| Course Descriptions | 10 |
| Summary of Facts About the Speech-Language Graduate Program | 13 |
| Graduation Procedures | 14 |
| Outline of the <i>New</i> Standards for the Certificates of Clinical Competence | 15 |
| Internship Facilities | 16 |
| Faculty and Staff of the Master's Program in Speech-Language Pathology | 18 |
| THE CODE OF STUDENT CONDUCT AND ACADEMIC RESPONSIBILITY | 19 |
| POLICIES GOVERNING STUDENT RELATIONS | 22 |
| LEARNING RESOURCES | 22 |
| EDUCATION FACULTY AND ADMINISTRATIVE STAFF | 24 |
| NOVA UNIVERSITY BOARD OF TRUSTEES AND ADMINISTRATION | 29 |
| NOVA UNIVERSITY DEGREE OFFERINGS | 30 |
| APPLICATION AND ADMISSIONS PACKET | 33 |
| Graduate Admissions Application Form | |
| Transcript Request and Transmittal Form | |
| Recommendation Forms | |
| Nova University Proposed Plan of Study | |

A *Schedule of Courses* is available from the program. All applicants to the program will be sent a copy of the *Schedule of Courses* when accepted for admission.

This catalog provides the framework for your program, please become familiar with the policies and procedures listed within. Failure to read this catalog does not excuse the students from the rules and procedures contained in it. Personal factors, illness, and contradictory advice from any source are not acceptable reasons for seeking exemption from the contents of this catalog.



NOVA UNIVERSITY'S

NOVA *New LaBonte Institute*

For Hearing, Language, and Speech

*A state-of-the-art
clinical facility...*

Experience

the difference

Master of Science Degree in
Speech-Language Pathology

Accredited by the Educational
Standards Board of the American
Speech-Language-Hearing Association



ABRAHAM S. FISCHLER CENTER
FOR THE ADVANCEMENT OF EDUCATION
Master's Program in Speech-Language Pathology
3375 SW 75th Avenue
Fort Lauderdale, Florida 33314

(305) 475-7094
(800) 541-6682, Ext. 7094

Nova University is accredited by the Commission on Colleges of the Southern Association of Colleges and Schools to award bachelor's, master's, educational specialist, and doctoral degrees. Nova University admits students of any race, color, sex, age, nondisqualifying handicap, religion or creed, or national or ethnic origin.

Master's Program in Speech- Language Pathology

Nova's master of science degree program in speech-language pathology was designed to provide the necessary course work and clinical experience to obtain Florida certification, Florida licensure, and the Certificate of Clinical Competence awarded by the American Speech-Language-Hearing Association (ASHA). The master's program is approved by the Florida Department of Education and accredited by ASHA's Educational Standards Board.

Nova University undergraduate students in any major can elect the speech-language pathology specialty, which satisfies the requirement for the undergraduate minor. The courses required for the specialty also satisfy the requirement for entrance to the Nova graduate major in speech-language pathology. Students with a bachelor's degree in any major may be admitted to the speech-language graduate program. These students must complete the prerequisite courses before beginning the graduate sequence.

Courses offered in locations other than the main campus in Fort Lauderdale are the same as on-campus courses. The program operates year-round. Students may enter the program in any given semester; however, limited admissions are available and a rigid timeline is applied to dates for entering.

Program Objectives

A. Academic Objectives

The Master's Program in Speech-Language Pathology (SLP) is designed to prepare students academically to analyze and synthesize a scientific informational base critical to their functioning as professional speech-language pathologists. To satisfy this academic goal, Nova graduates must demonstrate a thorough knowledge of the following subgoals:

1. The history and development of the speech-language hearing profession.
2. The requirements for state certification, licensure, and ASHA-CCC.
3. The professional issues and positions held by the profession as represented through the profession's governing body, the ASHA.
4. Past and present state and federal mandates.
5. The code of ethics.
6. The basic information in psychology, sociology, mathematics, general physics, and human anatomy prerequisite to the study of communication disorders.
7. The academic and physiological bases for normal development and use of speech, language, and hearing.
8. The physical bases and processes of the production and perception of speech, language, and hearing.
9. The linguistic and psycholinguistic variables related to normal development and use of speech, language, and hearing.
10. The process of critical evaluation and the utilization of research procedures in speech, language, and hearing.
11. The pathologies, etiologies, and educational, emotional, cognitive, and acoustic correlates of disorders of language, phonology, voice, fluency, and audition.
12. The skills necessary to interact and coexist with other disciplines such as medicine, psychology, learning disabilities, and education.
13. The process for formulating, designing, and implementing investigation in a given area of study or to replicate a study in a given area.
14. Multilingual and multicultural information as it relates to human communication.

B. Clinical Objectives

The speech-language pathology program is designed to prepare students clinically to assimilate and apply the academically required informational base through the clinical practice of speech-language pathology. The subgoals or outcomes necessary to achieve the clinical program goal are as follows:

1. Theoretical principles underlying a procedure, approach, methodology, or practice in the evaluation and management of disorders of speech, language, and hearing.
2. The various types of disorders of communication and how they are manifested, classified, evaluated, and remediated.
3. Instrumentation used to assess and treat disorders of voice, fluency, phonology, language, and audition.
4. The broad range of diagnostic tools and procedures, including audiometry, used formally and informally in the practice of speech-language pathology.

5. The variety of service delivery models, including individual, small group, classroom setting, and facilitative learning.
6. Human behavior, both normal and abnormal, and services available from related professions.
7. The interview process and how to utilize information obtained during interviews.
8. The process for preparing appropriate diagnostic and treatment reports including short- and long-range goals for client management.
9. The process of integrating information through history, observation, and evaluation to formulate a treatment approach.
10. Treatment approaches, methodologies, and procedures applied in the practice of speech-language pathology.
11. Procedures to treat individuals of all ages in the practice of speech pathology.
12. Habilitation/rehabilitation procedures for speech and language problems associated with hearing impairments.
13. The pathologies of the auditory system and assessment of auditory disorders and interpretations of the findings.
14. The process for establishing and managing a case load in a variety of work settings.
15. Techniques to enable students to self-evaluate their clinical skills.
16. Techniques for participating in a variety of interprofessional activities.
17. Obligations to the field to remain current in the practices of speech-language pathology following completion of a master's degree.
18. The process for applying current research findings to the practice of speech-language pathology.
19. The skills necessary to relate effectively to clients, staff, peers, and supervisors.

Admissions

Students are admitted to the program three times a year. *Completed applications/credentials must* be received by the deadline dates to be considered for enrollment in a given semester; however, the initial enrollment is not guaranteed for a specific semester.

DEADLINE DATES:

- May 1 for September-December (fall semester)
- September 1 for January-April (winter semester)
- January 1 for May-August (spring semester)

There are two types of admissions.

Unconditional - Requires a cumulative GPA of 3.0 on a 4.0 scale from undergraduate record or hold an earned master's degree.

Conditional - Requires a cumulative GPA of at least 2.75 on a 4.0 scale from undergraduate courses. This admission status permits students to enter the program provisionally; however, remaining in the program is contingent on completing nine semester hours of course work earning a GPA of 3.0. **Failure** to achieve the 3.0 GPA in the first nine credits will result in automatic termination from the program.

Procedures for Admission

- Submit an application by the due date prior to the semester you wish to enroll.
- Submit official transcripts of all university work, posting degree conferral.

NOTE: Students applying while still in undergraduate school may submit a current transcript. Upon completion of the bachelor's degree a final official transcript showing the degree award date must be submitted. The admission is contingent on receipt of the official final transcript.

- Submit three letters of recommendation. Letters may be from former instructors, employment supervisors, clergy, and others who can attest to your ability to be successful in graduate school.
- Submit logs of any clinical clock hours obtained elsewhere. Logs must be signed by a person holding ASHA-CCC.
- Personal interview. A personal interview is required as a part of the admission's process. Call the department to get an interview date.
- Pass a hearing, language, speech screening test. This will be administered during the first semester of enrollment. Students failing to meet program standards of this test will be given a prescription for remediation. It will be the responsibility of the student to successfully fulfill the prescribed remediation.

International Student Admissions

Individuals holding degrees from outside the United States are admitted provisionally and may enroll in the first semester while the following documents are being received and evaluated. They must submit:

1. An official transcript from the university that conferred the degree and an

- official course-by-course transcript from World Education Services verifying the bachelor's degree or its equivalent
- 2. Completed admissions application and fee
- 3. Three letters of recommendation
- 4. Logs of any clinical clock hours obtained under the supervision of a speech-language pathologist holding ASHA-CCC
- 5. An official TOEFL score of 550 (for non-native English speakers)
- 6. Verification of student visa or residency status
- 7. Students must agree to any remedial or tutorial recommendations made by the faculty to assist them in succeeding in the program.

International students who intend to reside in the United States and who are required to obtain an I-20 **must** be full-time, degree-seeking students and **must** attend the main campus in Fort Lauderdale, Florida. For further information, contact the International Student Adviser, Nova University, 3301 College Avenue, Fort Lauderdale, Florida 33314, or telephone (305) 370-5695. Any exception is made on a case-by-case basis.

Students living outside the United States who apply to the program MUST complete all of the above prior to arriving here. Housing and financial arrangements must be made in advance by the applicant.

SPECIAL NOTE: Once a student is enrolled, any request for information about admission status or any other program concern must be done in person or in writing. A parent, spouse, or friend will not be given any information. (See section on PRIVACY OF RECORDS.)

Degree Requirements

- **Credits**
Students holding a B.A. in Speech-Language or Communication Disorders will complete forty-eight credit hours.

Students holding a B.A. in a field other than Speech-Language will complete nineteen prerequisite credits prior to enrolling for the forty-eight credit-hour sequence.
- **Clock Hours**
Obtain a minimum of 375 clinical clock hours under supervision of ASHA certified personnel. Hours are first obtained when enrolled in clinical lab on the Fort Lauderdale Campus, LaBonte Institute.

- **Personal/Professional Behaviors**
Demonstrate behavior that indicates reasonable stability, maturity, understanding, and aptitude judged by the faculty as necessary for predicted success as a speech-language pathologist. Recommendation for termination may be made when the behavior of a student is judged to interfere with predicted success and/or when the safety and welfare of clients and others are at stake.
- **Grades**
Students must maintain a GPA of 3.0 at all times. Rules regarding repeating courses are as follows:
 - **Any graduate course must be repeated when a grade of less than a C is earned. A student may repeat only two courses.** When a grade of C or less is earned in any repeated course, the student is dismissed from the program. This includes prerequisite courses. Students may not enroll in additional courses until the course in question is repeated.
 - **A grade of B must be earned in Diagnostics II, clinical lab, and the two internships.** Failure to earn a grade of B in any one of these courses requires that the course be repeated.
 - **When the grade in any repeated course is less than a B, the student is terminated from the program.**

Policies Governing Academics

Student Review Committee (SRC)

The Program's Student Review Committee is composed of departmental faculty whose responsibility is to review students' academic and clinical progress on a periodic basis. The purpose of the SRC is to identify barriers to success in graduate study, make recommendations for assistance to students, and determine the advisability of the student's continuation in the speech-language program.

Probation

Students are placed on probation when one of the following occurs:

- Their GPA drops below 3.0 in a given semester
- A grade of C is earned in a clinical lab/internship
- The SRC recommends probation based on inappropriate, unprofessional behavior
- Violation of the Code of Ethics.

Students placed on probation will receive a contract explaining the terms of the probation and how to remove the probationary status.

A student placed on probation may not preregister for the following semester.

Transfer of Graduate Academic Credit

- Transfer credit must be equivalent to program courses described in this catalog as determined and approved by the speech-language faculty. Approval of transfer credit will be granted only after the student has met with the faculty member responsible for the subject matter to which the transfer applies.
- Only courses completed at regionally accredited universities and colleges, or their foreign equivalents, on the graduate level will be considered for transfer of credit into the master's program.
- No more than *nine semester hours* of credit may be transferred. Courses for transfer credit must have received a grade of B or higher (4.0 scale).
- Transfer credits must have been earned within six years prior to admission to the program. Credits earned beyond this time limit may be used if updated by examination with a grade of B or higher.
- Students enrolled in the program who wish to take a course at another university must have prior approval by the program director or his designee. Courses taken at another university during the program of study at Nova must be taken at an ASHA-ESB accredited program for the transfer credit to be acceptable toward the degree.

Credits earned at Nova University are transferable only at the discretion of the receiving school.

Suspension

All students are required to join the National Student Speech, Hearing, and Language Association while enrolled in the program and **purchase the liability insurance. Membership and insurance must be renewed annually.** NSSHLA has a *Code of Ethics* by which students must abide. Failure to purchase the insurance or violation of the ethics code may result in suspension. **It is the student's responsibility to submit proof of insurance to the program.**

Termination from the Program

Students who fail to comply with the recommendations of the SRC in order to be removed from probation will be terminated from the program. Students will be notified by certified mail of their termination.

Appeals Process

When students receive a termination notice, they have the right to petition the departmental faculty requesting reinstatement in the program. ***A request for reinstatement must be submitted in writing within 30 days of receipt of the certified mail advising the termination.*** The petition should be addressed to the chair of the Student Review Committee and should include the student's rationale for being reinstated. The SRC will review the rationale and render a decision.

The student will be notified by certified mail of the SRC decision. ***Students may petition for reinstatement only once. It is the responsibility of the student to communicate the petition request to the chairperson of the SRC.***

Advising and Registration

Advising

Upon admission, students must see an adviser to develop the Plan of Study. Students are responsible for seeing that their Plan of Study is updated. Appointment to revise a Plan of Study must be made with an adviser prior to registration and prior to instituting the change. All changes must be approved by a faculty adviser and recorded on the Plan of Study. Students initiating changes without faculty approval **WILL NOT BE ALLOWED TO REGISTER.**

Registration

Dates for registration are announced each semester. On the Fort Lauderdale campus, registration is conducted in the program offices by the faculty. Off-campus registration is conducted at the site. Tuition and fees are due at the time of registration unless prior arrangements are approved by the curriculum coordinator. Registration will be valid only when signed by a faculty adviser.

Any change in registration must be approved by the Curriculum Coordinator or his designee.

Courses Offered at Distance Sites

The program does offer a limited number of courses at Florida sites other than the Fort Lauderdale campus. When courses are offered off-campus, the program of study and degree requirements are the same as on-campus courses. The same prescribed sequence is applied both on- and off-campus.

IT IS IMPORTANT TO NOTE THAT IF A STUDENT ENROLLED IN A DISTANCE EDUCATION SITE MISSES A COURSE OR MUST REPEAT A COURSE, HE OR SHE MUST MAKE ARRANGEMENTS FOR THE MISSED OR REPEATED COURSE. KEEPING UP IN THE SEQUENCE IS CRITICAL IN THE OFF-CAMPUS SITES. STUDENTS ARE NOT GUARANTEED THAT MAKE-UP COURSES WILL BE AVAILABLE AT THEIR SITE. ALL MAKE-UP COURSES MUST HAVE PROGRAM APPROVAL.

Program Available in Summers Only

Students who have met the prerequisite requirement through an undergraduate major or by taking the prescribed courses listed in this catalog may enroll in a Summers Only sequence. Summers Only is available at the Fort Lauderdale campus exclusively. Students enrolling for Summers Only will follow a prescribed sequence of study announced year to year. Completion of this sequence requires four to five summers in Fort Lauderdale for eight weeks. Following the successful completion of the on-campus clinical experience, internships scheduled later in the graduate sequence may be arranged near the students' area of residence.

Time Limitation

A student is allowed five years to complete the degree. Students who interrupt their program must follow procedures for withdrawing and for

re-entering the program. Extenuating circumstances for not meeting the time limit will undergo severe faculty scrutiny.

Evaluation of Academic and Clinical Progress

Grading

Factors that are used to calculate the student's final grade in each course will be determined by the instructor of that course. The following grade scale will apply for determining final course grades:

| Numerical Points | Letter Grade | Grade Point Equivalent |
|------------------|--------------|------------------------|
| 90 - 100 | A | 4.0 |
| 80 - 89 | B | 3.0 |
| 70 - 79 | C | 2.0 |
| 60 - 69 | D | 1.0 |
| 0 - 59 | F | 0.0 |

- There are no plus or minus grades in this program.

Incompletes

Students achieving a grade of B or better but who, for personal reasons, are unable to complete course work may request that a grade of incomplete be given. The student must request the I grade from the instructor, who will prepare a contract for eliminating the I. The contract must be approved by the curriculum coordinator. Students granted an I in a course must remove it by completing the contract **within six months** of the final meeting of the course for which the I was given. Failure to remove an incomplete within the prescribed time period will result in a grade of F for the course.

Withdrawals

- Individual course, clinic, or internships:** Students may withdraw from a course, lab, or internship up to the midpoint without grade penalty by filing a change of registration form with the curriculum coordinator.
- Program:** Students who are faced with temporary personal or professional crises and find that they must withdraw from the program **must complete a withdrawal form and submit it to the curriculum coordinator.** Failure to file a temporary withdrawal form will jeopardize the completion of degree

requirements. Students may reenter the program only once and will be expected to follow all requirements in place at time of reentry.

Attendance Policy

Students are required to attend all classes. Exceptions to this policy will be stipulated by the instructor in the written course requirements. Grades may be affected if the attendance policy is violated. Extenuating circumstances affecting attendance must be documented to the instructor.

Videotaping Policy

Students are videotaped in certain academic classes and clinical labs for teaching-learning purposes. Students must sign an agreement for videotaping.

Financial Information

Tuition and Fees

The following information indicates current fee and tuition schedules. Tuition and fees are subject to change without prior notice. Students are required to pay the tuition in effect at the time of registration. Checks or money orders should be made payable to Nova University. Tuition and fees can be charged to MasterCard, VISA, Discover, or American Express accounts, or the students may attach a copy of the financial aid award letter.

Fees

| | |
|-------------------------|--|
| Application: | A one-time, nonrefundable fee of \$40 must accompany the application for admission. |
| Registration: | \$50 per registration |
| Late Charge: | \$50 per late registration |
| Lab: | Students enrolling in clinical classes (SLP 6005, SLP 6100, SLP 6110, SLP 6120, AUD 6100 and AUD 6110) pay a \$112 fee per class per enrollment. |
| Change of Registration: | \$50 per transaction |
| Degree: | A degree application fee of \$50 is due at the exit interview when all requirements are met for graduation. |

Tuition

| | |
|----------------|--|
| Graduate: | Tuition for graduate classes in speech-language pathology is \$410 per credit hour. Students who take graduate classes in other departments of Nova University pay the tuition rate set by the respective department. |
| Undergraduate: | Tuition for undergraduate prerequisite classes in speech-language pathology is determined by the undergraduate college. Students taking these classes in other departments at Nova University pay the tuition rate set by the respective departments. This policy also applies to graduate prerequisite courses. |

Financial Aid

Nova University's Office of Student Financial Aid administers comprehensive federal, state, institutional, and private financial aid programs. The purpose of these programs is to provide monetary assistance to students who can benefit from further education but who cannot do so without such assistance. Students interested in receiving a financial aid packet should contact the Office of Student Financial Aid at (305) 475-7411.

The department offers a limited number of graduate-student assistantships. Apply within the Speech-Language Department.

When to Apply for Financial Aid

It is recommended that students apply for financial aid well in advance of the date the funds will be needed because normal application processing takes 6 to 8 weeks and possibly up to 12 weeks. It is extremely important that students fill out all forms completely and correctly and that they respond promptly to all inquiries in order to prevent delays in processing. Awards are made only for the academic year. Applications are generally available each January for the following academic year. The priority deadline (April 1, 1993 for the 1993-94 academic year) is determined by the date the completed Need Analysis Form is received by the processor. Applications received after that date will be considered on a funds-available basis only. Students requesting financial aid for the summer term must complete a separate summer aid application that is generally available after January. The last day to apply for any financial aid for 1993-94 is May 1, 1994.

General Eligibility Requirements

In order to participate in the financial aid programs, a student generally must:

1. Be a U.S. citizen, permanent resident, or in the United States for other than a temporary purpose and be able to provide proof of such;
2. Be accepted for enrollment in an eligible program at Nova University;
3. Be making satisfactory progress in his/her course of study;
4. Not be in default of or owe a refund for any financial aid received previously;
5. Sign a Statement of Educational Certification; and
6. Be registered with Selective Service if required to do so by federal law.

Student Insurance

All students are required to purchase liability insurance for the entire time spent in the speech-language program, including prerequisite courses. **A current copy of the insurance premium must be on file in order to register for courses.** Insurance forms may be obtained from the adviser and program office.

Payment Policy

Full payment is due at the time of registration but no later than the start of classes. Failure to pay by the due date may result in cancellation of registration. This policy has been established and approved by the Nova University president and the Nova Board of Trustees.

Any exceptions must be approved by the vice-president for administration and finance. Only *exceptional* circumstances will be considered when altering general policy.

Refund Policy

Fees other than tuition are not refundable. Students who wish to receive a refund of tuition must follow the withdrawal procedure described in this manual. Unless withdrawal procedures have been completed within the stated deadline, students are assumed to be active participants and are responsible for tuition payments that apply to their signed registration forms whether or not an initial payment has been submitted. In the case of a refund, the following schedule applies:

- For 100 percent refund, withdrawal procedures must be completed prior to the first class session;
- For 75 percent refund, withdrawal procedures must be completed before the second class session, regardless of class attendance;
- For 50 percent refund, withdrawal procedures must be completed before the third class session, regardless of class attendance.

After the third class session, no tuition will be refunded, regardless of class attendance.

In addition, Florida law provides that students have three working days from the date of signing an enrollment contract or financial agreement with the University to request a cancellation of the contract in writing and receive a full refund of any tuition and registration fees paid. Further a student shall receive a full refund of tuition and registration fees paid by the student prior to the commencement of instruction if the student submits a written request to the institution within three working days of the payment..

New Policy

Admissions are taken according to date received. Due to the demands for this program, an initial enrollment date may not be assured.

New students must make a tuition credit deposit of \$1,000 to assure an enrollment reservation for the semester in which the first enrollment is requested.

Deposit Schedule is:

- June 1 for Fall
- October 1 for Winter
- February 1 for Spring

Speech-Language Pathology Courses

Prerequisite Courses:

| | Sem. Hrs. |
|--|-----------|
| SLP 400/5000 Introduction to Hearing, Speech, and Language Disorders | 3 |
| SLP 410/5003 Neuroanatomy and Physiology | 3 |
| SLP 420/5001 Anatomy and Physiology of Vocal and Hearing Mechanisms | 3 |
| SLP 430/5002 Phonetics | 3 |
| SLP 440/5004 Hearing and Speech Science | 3 |
| SLP 450/5005 Speech and Language Development | 3 |
| SLP 470/5007 Directed Observation | 1 |
| | <hr/> 19 |

Graduate Courses:

| | |
|---|----------|
| SLP 6000 Diagnosis of Language and Speech Disorders Part I: Tests | 3 |
| SLP 6005 Diagnosis of Language and Speech Disorders Part II: Applications | 2 |
| SLP 6010 Language Disorders in Children | 3 |
| SLP 6011 Language and Learning Disabilities | (3) |
| SLP 6020 Language Disorders in Adults | 3 |
| SLP 6030 Voice Disorders in Children and Adults | 3 |
| SLP 6040 Fluency Disorders in Children and Adults | 3 |
| SLP 6050 Motor Speech Disorders | 3 |
| SLP 6060 Phonological Disorders | 3 |
| SLP 6070 Research Methods in Speech Pathology | 3 |
| SLP 6075 Seminar in Professional Issues | 3 |
| SLP 6080 Directed Research | 2 |
| SLP 6090 Counseling in Communication Disorders | 3 |
| SLP 6201 Selected Topics in Communication Disorders | (1) |
| SLP 6202 Selected Topics in Communication Disorders | (2) |
| SLP 6203 Selected Topics in Communication Disorders | (3) |
| AUD 6000 Audiology | 3 |
| AUD 6010 Aural Rehabilitation Procedures for the Hearing Impaired | 3 |
| | <hr/> 40 |

***Labs and Internships Required:**

| | | |
|---|--------------------------|-----------|
| SLP 6100 | Clinical Lab | 2 |
| SLP 6110 | Internship | 2 |
| SLP 6120 | School Internship, K-12 | 2 |
| AUD 6100 | Audiology Lab | 1 |
| AUD 6110 | Aural Rehabilitation Lab | 1 |
| | | 8 |
| TOTAL CREDITS REQUIRED (ACADEMIC, LABS, AND INTERNSHIPS) | | 48 |

(courses in parenthesis are elective and are not included in the total hours required)

***NOTE:** Faculty will recommend to students the number of clock hours required in a given clinic and/or in repeating a clinical lab or internship. Students must register to repeat a lab.

SLP 6100 Clinical Lab is required of all students who are eligible to accrue clock hours; they are scheduled according to previous clinical experience. Students must also complete two off-campus clinical internships, SLP 6110 (nonschool placement) and SLP 6120 (K-12 placement).

SLP 6100 Clinical Lab is available only on the main campus in Fort Lauderdale. Students must enroll in clinical lab at the time it is scheduled on the Plan of Study.

Internships are available in locations throughout Florida. Upon successful completion of clinical lab, students are recommended by the faculty for internships. Placements are made by the faculty in collaboration with the student. The length of internship is determined by the faculty.

To fulfill the above clinical requirements, it may become necessary to interrupt your full-time employment.



Dr. Frank Wilson demonstrates Nasoendoscopy at Workshop.

Course Descriptions for the Program in Speech-Language Pathology

Prerequisites

| Course Number | Credits | Course Title | Course Description |
|---------------|---------|---|---|
| SLP 400/5000 | 3 | Introduction to Hearing, Speech, and Language Disorders | Understanding of speech, language, and hearing disorders and their classification, manifestation, and etiologies |
| SLP 410/5003 | 3 | Neuroanatomy and Physiology | Introduction to the anatomy and physiology of the developing and mature human nervous system |
| SLP 420/5001 | 3 | Anatomy and Physiology of Vocal and Hearing Mechanisms | Introduction to the anatomy and physiology of the auditory and vocal mechanisms |
| SLP 430/5002 | 3 | Phonetics | History, theory, and application of phonetics, including sampling and transcription techniques |
| SLP 440/5004 | 3 | Hearing and Speech Science | Physical bases and process of the production and perception of hearing, language, and speech; use of instrumentation |
| SLP 450/5005 | 3 | Speech and Language Development | Study of prelinguistic and psycholinguistic variables related to normal development from infancy through adolescence; application of analytic methods to developmental and cultural variations in speech and language |
| SLP 460 | 3 | Linguistics | Historical, descriptive, and sociolinguistic components of language (elective) |
| SLP 470/5007 | 1 | Directed Observation | Students must observe 25 clock hours of evaluation and management. Observation hours must precede clinical assignments and be completed under direct supervision in the Communication Disorders Clinic. |

Graduate Courses

| Course Number | Credits | Course Title | Course Description |
|----------------------------------|-------------|--|--|
| AUD 6000 | 3 | Audiology | Instruction in test administration and in interpretation of standard and specialized tests of auditory function |
| SLP 6060 | 3 | Phonological Disorders | An analysis and comparison of systematic distinctive feature and phonologic processing theory and application |
| AUD 6010 | 3 | Aural Rehabilitation Procedures for the Hearing Impaired | Remediation of communication problems resulting from hearing impairment; use of amplification and assistive devices. Prerequisite: AUD 6000 |
| SLP 6070 | 3 | Research Methods in Speech Pathology | Exposure to critical analysis of the field's literature with respect to research design and statistical application |
| SLP 6075 | 3 | Seminar in Professional Issues | History, current professional issues, and trends in the field; management and operation of clinics in a variety of settings; ethical and legislative concerns |
| SLP 6080 | 2 | Directed Research | Independent research directed by faculty; applied research culminating in written documentation of project |
| SLP 6201 SLP 6202 SLP 6203 | 1 2 3 | Selected Topics in Communication Disorders | Advanced study of selected theoretical, clinical, or professional issues in speech pathology and audiology (elective—may be taken for credit, CEU, or recertification) |
| SLP 6090 | 3 | Counseling in Communication Disorders | Exploration of theories of counseling; emphasis on communication disorders with different approaches to working with clients and families |
| SLP 6050 | 3 | Motor Speech Disorders | Nature, etiology, diagnosis, and management of motor speech disorders |
| SLP 6000 | 3 | Diagnosis of Language and Speech Disorders Part I: Tests | Procedures, techniques, and instrumentation used to assess speech and language status |
| SLP 6005 | 2 | Diagnosis of Language and Speech Disorders Part II: Applications | Emphasis on analysis and interpretation of data and their impact on differential diagnosis |
| SLP 6010 | 3 | Language Disorders in Children | Evaluation and treatment of disorders of language affecting infants through adolescence, including developmental and acquired problems |
| SLP 6011 | 3 | Language and Learning Disabilities | Discusses overall characteristics and implications of language learning disabilities in the school-aged child and approaches to the evaluation and management of speech, language, and academically related domains (elective) |

Graduate Courses

| Course Number | Credits | Course Title | Course Description |
|---------------|---------|--|--|
| SLP 6020 | 3 | Language Disorders in Adults | Evaluation and treatment of disorders of language of adults including aphasia, closed head injury, and dementia |
| SLP 6030 | 3 | Voice Disorders in Children and Adults | Etiological factors, procedures for diagnosis, remediation, and interdisciplinary management of individuals with functional and/or organic voice disorders, e.g., dysphonia, nodules, cleft palate, and other disorders of resonance |
| SLP 6040 | 3 | Fluency Disorders in Children and Adults | Etiology, diagnosis, and management of children and adults with disorders of fluency, e.g., developmental stuttering, neurologically based stuttering, cluttering, and other nonfluent speech conditions |

Labs and Internships

| Course Number | Credits | Course Title | Course Description |
|----------------|--|--------------------------|---|
| SLP 6100 | 2 | Clinical Lab | Seventy-five clock hours required; supervised clinical practice in the evaluation and treatment of speech, language, and hearing disorders; development of treatment plans; and writing, evaluation, and progress reports. Requires work with assigned clients and supervisors and regular class meetings. This lab will continue and/or be retaken on the recommendation of faculty. |
| Prerequisites: | SLP 6000 SLP 6005 SLP 6010 SLP 6060 | | |
| SLP 6110 | 2 | Internship | Off-campus placement in a nonschool setting (hospital, agency, private practice). Students must complete a minimum of 60 clock hours and meet the schedule required by the facility to which the student is assigned. Class meetings are scheduled periodically. |
| Prerequisites: | All prerequisites listed above, plus SLP 6100 and SLP 6020 | | |
| SLP 6120 | 2 | School Internship, K-12 | Must be taken by students seeking Department of Education certification in speech pathology; requires a minimum of 60 clock hours to be completed in a time period established by the school to which the student is assigned. The student attends scheduled class meetings. |
| AUD 6100 | 1 | Audiology Lab | Practice in hearing testing. The student must accrue a minimum of 15 clock hours (concurrent with or following AUD 6000). |
| AUD 6110 | 1 | Aural Rehabilitation Lab | Clinical practice in the management of hearing impaired children and adults; use of amplification, speech reading, and auditory training techniques. Student must accrue a minimum of 15 clock hours. Prerequisites: AUD 6010, SLP 6005 and SLP 6100 |

Summary of Facts About the Speech-Language Graduate Program

Accreditation

1. American Speech-Language-Hearing Association
 - Program accredited by the Educational Standards Board in December 1990
 - Graduates meet all requirements for individual certification (CCC-Sp)
2. Florida Department of Education program approval granted in 1985
3. State of Florida registration/licensure
 - Graduates meet all requirements for individual registration/licensure

Time and Residency Requirement

- May be completed in five to eight semesters
- All students complete a residency in an intensive clinical practicum at the Communication Disorders Clinic (CDC) in Fort Lauderdale.
- Degree must be completed in five years

Advising and Registration

Registration for classes is held about one month before the beginning of the term. Exact dates will be announced each semester. The student is responsible for meeting with an adviser each semester to determine his or her schedule *prior* to registration. Failure to attend this meeting may result in delayed registration.

Clinical Practicums

- The Communication Disorders Clinic carries a census of more than 100 clients of all ages presenting a wide variety of disorders. The CDC is located in the Ralph J. Baudhuin School with satellite services at both campuses of the University School and the Family Center.
- Approximately 50 off-campus sites are contracted for use for the off-campus internships. These facilities represent the spectrum of services offered in the profession.

Faculty

- Primary faculty includes 14 full-time equivalent (FTE), 4 doctoral-level, and 10 master's-level positions, all holding appropriate certificates of clinical competence and having many years of academic and clinical experience.

You will find in this document all the information needed to be enrolled as a graduate student in speech-language pathology either as a degree-seeking student or as a special student seeking recertification or updated information. Please feel free to use our toll-free number to call us to discuss your particular professional and academic needs.

Facilities

Bernice and Jack LaBonte Institute for Hearing, Language, and Speech is made up of two divisions—the Communication Disorders Clinic and the Program for Graduate Studies in Speech-Language Pathology. The Communication Disorders Clinic provides a continuum of exemplary diagnostic and therapeutic services for clients of all ages—infants through adulthood and includes a child and adult and geriatric suite. Clients representing all types of hearing, language, and speech disorders receive service at the Clinic. The Program for Graduate Studies in Speech-Language Pathology is a department within the Abraham S. Fischler Center for the Advancement of Education. Students in this program are involved in an intensive academic curriculum designed to provide the background information necessary for a clinical career. The rigorous, supervised clinical experience that the students receive in The Communication Disorders Clinic brings the academic instruction to life. Graduates of the program carry this quality, clinical service across Florida and the nation and in other countries.

The Institute is a 7,000-square-foot facility containing clinic rooms, observation rooms, offices, classrooms, and a student study room with lockers and computers. Each room and office is equipped for video/audio recording and transmission.

Graduation Procedures

Documents Required

- Degree application
- ASHA application for membership and certification
- NESPA score*
- Florida application for licensure

Procedure

- Make an appointment with the curriculum coordinator for an exit interview no less than one month prior to graduation.
- File with the coordinator a copy of the degree application, ASHA application, NESPA score*, and application for Florida licensure.

* NESPA Dates

If you intend to graduate in:

September
October
November
December

January
February
March
April

May
June
July
August

You must take the NESPA in:

July (same year)

November (previous year)

March (same year)

Outline of the *New Standards for the Certificates of Clinical Competence*

(Effective for Applications for Certification Postmarked January 1, 1993)

I. Degree: Applicants for either certificate must hold a master's or doctoral degree. Effective January 1, 1994, all graduate course work and the clinical practicum required in the professional area for which the certificate is sought must have been initiated and completed at an institution whose program was accredited by the ESB in the area for which the certificate is sought.

II. Academic Course Work: 75 semester hours (s.h.)

A. Basic science course work (27 s.h.):

- 6 s.h. in biological/physical sciences and mathematics
- 6 s.h. in behavioral and/or social sciences
- 15 s.h. in basic human communication processes, to include the anatomic and physiologic bases, the physical and psychophysical bases, and the linguistic and psycholinguistic aspects.

B. Professional course work (36 s.h.): 30 of the 36 s.h. in courses for which graduate credit was received; 21 of the 30 s.h. must be in the professional area for which the certificate is sought.

CCC-SLP

- 30 s.h. in speech-language pathology
 - 6 in speech disorders*
 - 6 in language disorders*
- 6 s.h. in audiology
 - 3 in hearing disorders and hearing evaluation*
 - 3 in habilitative/rehabilitative procedures*

CCC-A

- 30 s.h. in audiology
 - 6 in hearing disorders and hearing evaluation*
 - 6 in habilitative/rehabilitative procedures*
- 6 s.h. in speech-language pathology, not associated with hearing impairment
 - 3 in speech disorders*
 - 3 in language disorders*

III. Supervised Clinical Observation and Clinical Practicum: 375 clock hours (c.h.)

A. Clinical observation (25 c.h.) prior to beginning initial clinical practicum

B. Clinical practicum (350 c.h. total)

- 250 c.h. at the graduate level in the area in which the certificate is sought
- 50 c.h. in each of three types of clinical settings.

CCC-SLP

- 20 c.h. in each of the following 8 categories:
 1. Evaluation: speech** disorders in children
 2. Evaluation: speech disorders in adults
 3. Evaluation: language disorders in children
 4. Evaluation: language disorders in adults
 5. Treatment***: speech disorders in children
 6. Treatment: speech disorders in adults
 7. Treatment: language disorders in children
 8. Treatment: language disorders in adults
- Up to 20 c.h. in the major professional area may be in related disorders.
- 35 c.h. in audiology
 - 15 in evaluation/screening
 - 15 in habilitation/rehabilitation

IV. National Examinations in Speech-Language Pathology and Audiology

V. The Clinical Fellowship

-
- * Academic credit for clinical practicum may *not* be used to satisfy these minimum requirements. However, a maximum of 6 s.h. for the practicum may be applied to the 36 s.h. minimum professional course work.
 - ** "Speech" disorders include disorders of articulation, voice, and fluency.
 - *** "Treatment" for hearing disorders refers to clinical management and counseling, including auditory training, speech reading, and speech and language services for those with a hearing impairment.

Internship Facilities

Nova University has a formal internship agreement with the following facilities:

| | |
|---|-----------------------------|
| All Children's Hospital | St. Petersburg |
| Ambilingual Associates | Hialeah |
| Andrea Draizar Associates | Miami |
| Ann Stork Center | Fort Lauderdale |
| Baptist Hospital of Miami | Miami |
| Bethesda Memorial Hospital | Boynton Beach |
| Boca Community Hospital | Boca Raton |
| Bon Secours Villa Maria Nursing Center | North Miami |
| Bridge Brain Injury Program | Fort Lauderdale |
| Broward County Schools | Broward County |
| Center for Bilingual Speech-Language Disorders | Miami |
| Center for Pediatric Therapy | Miami |
| Center for Pediatric Therapy | Coral Gables |
| Center for Speech and Language | Vero Beach |
| Communispeech, Inc. | Lauderhill |
| Community Re-Entry Center | Fort Lauderdale |
| Dade County Schools | Miami |
| Dimensions | Miami |
| Doctors Hospital | Sarasota |
| Andrea Draizer Associates | Miami |
| Easter Seal Society of Broward | Plantation |
| Easter Seal Society of Dade | Miami |
| Gulf Coast Center | Fort Myers |
| HCA LW Blake Hospital | Bradenton |
| HealthSouth Regional Rehabilitation Center | Miami |
| Hearing and Speech Center of Florida | Coral Gables |
| Heritage Nursing Home and Rehab. Center | Miami |
| Hollywood Memorial Hospital | Hollywood |
| Holy Cross Hospital | Fort Lauderdale |
| Humana Hospital, Biscayne | Miami |
| Indian River City Schools | Vero Beach |
| Jackson Memorial Hospital | Miami |
| Jonas Therapy Associates | Deerfield Beach, Palm Beach |
| Jupiter Medical Center | Jupiter |
| Kendall Speech and Language Center | Miami |
| Lee County Hospital | Fort Myers |
| Mailman Center-Debbie Institute | Miami |
| Manatee Memorial Hospital | Bradenton |
| Martin Memorial Medical Center | Stuart |
| Medical Center Hospital | Punta Gorda |
| Mediplex Rehabilitation Bradenton | Bradenton |
| Miami Fluency Clinic | Miami |
| Morton Plant Hospital | Palm Harbor |
| Mount Sinai Medical Center | Miami Beach |
| Naples Community Hospital | Naples |
| North Shore Medical Center | Miami |
| Nova Care, Inc. | Florida |
| Orange County Public Schools | Orlando |
| Palm Beach Schools | Palm Beach County |
| Parkway Regional Medical | North Miami Beach |
| Pediatric Therapy Associates | Plantation |
| Pilesky-Levine, Ms. Rhoda | Plantation |
| Pinecrest Rehabilitation Hospital | Delray Beach |
| Professional Health Care Services | Hollywood |
| RehabWorks of Florida | Palm Beach Gardens |
| Rehabilitation Center for Children and Adults | Palm Beach |
| Rehabilitation Institute of Sarasota | Sarasota |
| Sarasota County Public Schools | Sarasota |
| Sarasota Memorial Hospital | Sarasota |
| Scottish Rite Center of All Children's Hospital | Sarasota |
| Scottish Rite Speech and Hearing | Tampa |
| South Miami Hospital | Miami |
| Speech/Language Pathology of South Florida | Boca Raton/Delray |
| Speech Pathology and Education Center | Miami |
| St. Mary's Hospital | West Palm Beach |
| Stephanie Stryker Practice | Miami Beach |
| Sunrise Rehabilitation Hospital | Sunrise |
| Treasure Coast Rehabilitation Hospital | Vero Beach |
| United Cerebral Palsey Center of Miami | Miami |
| University of Miami | Miami |
| Venice Hospital | Venice |
| West Gables Rehabilitation Hospital | Miami |



Graduate Student in Clinical Practicum.



Supervising Clinical Practicum.

Faculty and Staff of the Master's Program in Speech-Language Pathology

THELMA ALBRITTON, M.Ed., CCC-SLP
Associate Director/Program Professor

NANCY DILLINER, M.S., CCC-SLP
Clinical Supervisor

ELANE FRIEDEL, M.S., CCC-A
Coordinator of Internships/Audiologist

FRAN FRIEDMAN, M.A., CCC-SLP
Senior Lecturer

JOSEPH F. GONZALEZ, Ph.D., CCC-SLP
Coordinator of Curriculum/Research,
Program Professor

MONA GRIFFER, M.S., CCC-SLP
Clinical Supervisor

DIANE GUPTA, M.A., CCC-SLP
Clinical Supervisor/Speech-Language Pathology
Ralph J. Baudhuin Oral School

MARDY HALL, M.A., CCC-SLP
Site Coordinator, Fort Pierce

EDIE HAPNER, M.S., CCC-SLP
Clinical Supervisor

BETH HEUSER-ASEERE, M.S., CCC-SLP
Academic Adviser

BRIAN D. HUMPHREY, M.A., CCC-SLP
Clinical Supervisor

NANCY MAHECHA, Ph.D., CCC-SLP
Program Professor

JACK MILLS, Sc.D., CCC-SLP-A
Program Director/Program Professor

WREN NEWMAN, M.S., CCC-SLP
Clinical Supervisor

BARBARA PACKER, M.A., CCC-A
Coordinator of Audiology

DANIEL PALMERI, M.A., CCC-SLP
Senior Lecturer

ARLENE SMITHERMAN, M.S., CCC-A
Staff Audiologist

SHELLY VICTOR, M.A., CCC-SLP
Coordinator of Communication Disorders Clinic

FRANK B. WILSON, Ph.D.
Distinguished Visiting Professor

MONICA WOJCIK, M.A., CCC-SLP
Senior Lecturer

Consultants

University faculty/staff who act in a consulting and resource capacity to the graduate program and Communication Disorders Clinic:

CAROLE BENEDICT
Coordinator of Marketing

RICHARD GOLDMAN, Ph.D.
Dean, Abraham S. Fischler Center for the
Advancement of Education

TONI HEPPLER, M.S.
Director, Center for Media and Technology

MARILYN SEGAL, Ph.D.
Dean, Family and School Center

STEPHEN I. SIPLET, Ed.D.
Student Affairs

J. DONALD STANIER, Ph.D.
Assistant Dean, Abraham S. Fischler Center
for the Advancement of Education

LINDA SWAILS
Director of Administrative Operations

SUSAN TALPINS, Ed.D.
Director, Ralph J. Baudhuin Oral School

The Code of Student Conduct and Academic Responsibility

Purpose: This code seeks to promote high standards of academic integrity by setting forth the responsibilities of students as members of the University community. Abiding by the code ensures a climate wherein all members of the University community can exercise their rights of membership.

Nova University Statement of Academic Rights and Responsibilities

Nova University, as a community of women and men, is committed to furthering scholarship, academic pursuits, and service to our society. As an institution, our purpose is to assure all students an equal opportunity to fulfill their intellectual potential through pursuit of the highest standards of academic excellence.

Certain rights and obligations flow from membership in any academic community committed to such goals:

- The rights of personal and intellectual freedom, which are fundamental to the idea of a university;
- A scrupulous respect for the equal rights and dignity of others; and
- Dedication to the scholarly and educational purposes of the University and participation in promoting and assuring the academic quality and credibility of the institution.

Students are responsible for obtaining, learning, and observing the established University and center policies as listed in all official publications. In addition, students must comply with the legal and ethical standards of the institution as well as those of Broward County and the State of Florida. All members of the community should inform the appropriate official of any violation of conduct regulations.

A. Academic Standards

The University expects its students to manifest a commitment to academic integrity through rigid observance of standards for academic honesty. The academic honesty standards include:

1. **Original Work.** Assignments such as course preparations, exams, texts, projects, term papers, practicums, etc., must be the original work of the student. Original work

may include the thoughts and words of another author, but if that is the case, those ideas or words must be indicated in a manner consistent with a University-recognized form and style manual.

Work is not original that has been submitted previously by the author or by anyone else for academic credit. Work is not original that has been copied or partially copied from any other source, including another student, unless such copying is acknowledged by the person submitting the work for the credit at the time the work is being submitted or unless copying, sharing, or joint authorship is an express part of the assignment. Exams and tests are original work when no unauthorized aid is given, received, or used prior to or during the course of the examination.

2. **Referencing the Works of Another Author.** All academic work submitted for credit or as partial fulfillment of course requirements must adhere to each center's specific accepted reference manuals and rules of documentation. Standards of scholarship require that proper acknowledgement be given by the writer when the thoughts and words of another author are used. Students must acquire a style manual approved by their center and become familiar with accepted scholarly and editorial practice in their program. Students' work must comport with the adopted citation manual for their particular center.

At Nova University, it is plagiarism to represent another person's work, words, or ideas as one's own without use of a center-recognized method of citation. Deviating from center standards (A)(1) or (A)(2) is considered plagiarism at Nova University.

3. **Tendering of Information.** All academic work must be the original work of the student. Giving or allowing one's work to be copied, giving out exam questions or answers, or releasing or selling term papers is prohibited.

4. **Acts Prohibited.** Students should avoid any impropriety, or the appearance thereof, in taking examinations or completing work in pursuance of their educational goals.

Violations of academic responsibility include, but are not limited to:

- a. Plagiarism;
- b. Any form of cheating;
- c. Conspiracy to commit academic dishonesty;
- d. Misrepresentation;
- e. Bribery in an attempt to gain an academic advantage;
- f. Forging or altering documents or credentials; and
- g. Knowingly furnishing false information to the institution.

5. **Additional Matters of Ethical Concern.** Where circumstances are such as to place students in positions of power over University personnel, inside or outside the institution, students should avoid any reasonable suspicion that they have used that power for personal benefit or in a capricious manner.

B. Conduct Standards

1. Students should not interfere with the rights, safety, or health of members of the University community nor interfere with other students' right to learn. Students are expected to abide by all University, center, and program rules and regulations and all local, state, and federal laws. Violations of conduct standards include, but are not limited to:
 - a. Theft;
 - b. Vandalism;
 - c. Disruptive behavior;
 - d. Possession or use of firearms, fireworks, explosives, or other dangerous substances or items;
 - e. Possession, transfer, sale, or use of illicit drugs;
 - f. Appearance in class or on campus under the apparent influence of alcohol or illicit drugs or chemicals;
 - g. Violations of housing regulations;
 - h. Any act or conspiracy to commit an act which is harassing or abusive or which invades an individual's right to privacy, including, but not limited to, sexual harassment and abuse

against members of a particular racial, ethnic, religious, or cultural group;

- i. Threats of or actual damage to property or physical harm to others;
- j. Nova University prohibits any activity that may be construed as hazing. "Hazing" is defined as: any action or situation which recklessly or intentionally endangers the mental or physical health or safety of a student for the purpose of initiation or admission into or affiliation with any organization operating under the sanction of a university; and
- k. Failure to pay tuition and fees in a timely manner.

2. Students must have authorization from the University to have access to University documents, data, programs, and other types of information and information systems. Any use of the above without authorization is prohibited.

C. Supplementary Standards

Students are expected to comply with the legal and ethical standards of this institution and those of their chosen field of study, including the code of ethics for computer usage. The University and each center or program may prescribe additional standards for student conduct as would comport with the letter and spirit of this code.

D. Violations

Any violation(s) of any of the academic standards, conduct standards, or supplemental standards may result in a complaint being filed against a student to enforce the Code of Student Conduct and Academic Responsibility. Deans or directors may, in their discretion, immediately suspend students pending a hearing on charges of academic conduct or supplemental standard violations. Any student found guilty of a violation of the academic, conduct, or supplemental standards will be subject to disciplinary action, including expulsion from the University.

Student Code of Computer Ethics

Student users of Nova University's computer systems are subject to all applicable federal, state, and international computer laws. A copy of the Florida Computer Crimes Act and referenced Florida State Statutes may be examined online or in a student's academic program office.

Nova University provides computer systems with access to hardware, software, and networks to enhance academic experience. Ethical conduct by students in the use of this technology is the same as in all other areas of University life and it is of equal importance. All students are expected to abide by the Nova University Code of Student Conduct and Academic Responsibility.

For more detailed information on Nova's Student Code of Computer Ethics, please consult the Speech-Language Pathology Student Handbook.

Drug-Free Schools and Campuses

In order to comply with the Drug-Free Schools and Communities Act (Pub. L. No. 101-226, Title 34 C.F.R., part 86), Nova University has adopted the following policy for all work place, school, campus, and field-based programs.

The unlawful manufacture, distribution, dispensation, possession, or use of illicit drugs and the abuse of alcohol are prohibited in and on Nova University owned or controlled property and as a part of any of its activities. No Nova University employee or student is to report to work or school while under the influence of illicit drugs or alcohol.

For more detailed information on this policy, please consult the Speech-Language Pathology Student Handbook.

Privacy of Records

Nova University maintains a system of records that includes application forms, letters of recommendation, admission test scores, and transcripts of students' previous academic records and performance while in residence. These records are available for review by present and former students upon written request to the registrar's office. However, the registrar will not release transcripts of students' academic records until all their accounts, both academic and nonacademic, have been paid.

The law limits access by and disclosure to a third party. Such access is given only upon consent of the student or if required by law, except for the following information, which may be released as directory information: a) student's name; b) dates of attendance; c) degree and awards received. Requests for such information must be submitted in writing

to the registrar. The University reserves the right to refuse the above information if the reason for the request is not considered to be a sufficient need to know.

Any student or parent not wishing to have this information disclosed should notify the Office of the University Registrar in writing prior to September 1 of the relevant school year.

A person does not have the right of access to educational records until he or she has been admitted to and has actually begun attending Nova University. There is no prohibition from disclosing such information to the parents of students who are listed on their parents' federal income tax forms.

Parents or eligible students will be provided a hearing by the University if they wish to challenge the content of the record. If they are still not satisfied, the parents or eligible students may add explanatory or rebuttal matter to the record.

If the students or parents are denied access to a hearing or if the records are alleged to have been illegally disclosed to a third party, the students or parents may file a complaint with the U.S. Department of Education.

Reservation of Power

Nova reserves the right to amend, modify, add to, or delete its rules, policies, and procedures affecting its institutional relationship with students as deemed necessary by the administration. Any such amendment, modification, addition, or deletion shall not be considered a violation of the relationship between the University and the student. Such right includes modification to academic requirements, curriculum, tuition, and/or fees when in the judgment of the administration such changes are required in the exercise of its educational responsibility.

Grievances

When questions about procedures, decisions, or judgments occur, counseling is available for discussion and resolution of differences. Students may also have recourse to more formal avenues of appeal and redress. Grievance procedures are explained in the Master's Program in Speech-Language Pathology Student Handbook.

Policies Governing Student Relations

General

Nova University has established specific policies, procedures, and guidelines defining its relationship with its students. The term "student" defines the student, or parents of the student if the student qualifies as a dependent under the provisions of the Internal Revenue Code.

Institutional and Academic Information

Nova and its academic schools and centers periodically publish bulletins or catalogs describing Nova and its programs. These bulletins are available to enrolled and prospective students through the various admissions offices associated with academic units or from the Office of the University Registrar. Each academic unit, group of units, and/or the registrar's office maintains at least one full-time employee to assist students in obtaining information.

Veterans' Benefits

All programs described in this catalog are approved for the training of veterans and other eligible persons by the Bureau of State Approval for Veterans' Training, Florida Department of Veterans' Affairs. Eligible veterans and veterans' dependents should contact the Office of the University Registrar, 3301 College Avenue, Fort Lauderdale, Florida 33314, telephone (305) 370-5685.

Housing

Located on the main campus is the Nova Residential Living Complex. A new, 304-bed residence hall is available for undergraduate students. Also available is a multitude of one- and two-bedroom apartments in four buildings for graduate students.

Housing is available year-round. Leases include utilities, cable television, and central air conditioning. Rates will be furnished on request from the Office of Residential Life, Nova University, 3301 College Avenue, Fort Lauderdale, Florida 33314.

Nondiscrimination

Nova fully subscribes to and practices a policy of nondiscrimination in admissions and enrollment. No applicant or enrolled student shall be discriminated against because of race, color, sex, age, nondisqualifying handicap, religion or creed, or national or ethnic origin. The University registrar is designated as the policy coordinator to assure compliance with all federal, state, and local laws and regulations relative to nondiscrimination.

Learning Resources

Library Resources

The Albert and Birdie EINSTEIN LIBRARY, located in the Parker Building, houses the University's major collection of books and journals. Its more than 138,000 volume equivalents can be searched through the library's computer catalogue, considerably more sophisticated than the traditional card catalog. Also, more than 25 specialized indexes in CD-ROM format are available, as is dial-up access to the on-line catalog.

The Einstein Library is equipped to perform on-line literature searches using DIALOG information databases, and reference librarians will assist students in structuring searches.

The library is a member of SEFLIN AND FLIN, cooperative library networks that speed access to materials from other institutions throughout Florida. The Einstein Library has also been named a cooperating library of the Foundation Center in New York, giving students access to a special collection for grants and foundation research.

Through the Off-Campus Library Services Office (OCLS), students off campus have access to books, journal articles, Educational Resources Information Center (ERIC) documents, interlibrary loans, database searches, and reference librarians specializing in services to remote student locations. Students may request materials 24 hours a day, using mail, phone, FAX, or home computer. To contact OCLS by phone call (800) 541-6682, Ext. 7050, 7508, or 7388.

Nova's Information Retrieval Services (IRS) was recently merged with the OCLS. The entire microfiche collection of ERIC, more than 300,000 documents, will be available to students during the same extended hours that the library is open. The OCLS also houses a microfiche collection of students' practicums and major applied research projects from the Abraham S. Fischler Center for the Advancement of Education of Nova University.

The UNIVERSITY SCHOOL MEDIA CENTER has an integrated collection of print and nonprint materials designed to provide curriculum enrichment resources for students from preschool through high school.

The William Springer RICHARDSON LIBRARY, at the Oceanographic Center at Port Everglades, houses a specialized collection of books and periodicals related to research in physical, biological, and chemical oceanography.

The LAW LIBRARY is in the Leo Goodwin, Sr., Hall. The library collection, now more than 254,000 volumes and volume equivalents, contains the standard materials required for legal study and research: English, American, and state periodicals, treatises, and looseleaf services. In addition, the library includes extensive materials in the areas of taxation, land use planning, and international law. It is one of the few collections designated as a depository for United Nations documents. It is also designated as a depository for state and federal documents.

Computing Facilities

The University's Computer Center provides data processing facilities and services for meeting the instructional, research, and administrative needs of the University. The central site is located on campus in the Mailman-Hollywood Building.

Center for Media and Technology

Consisting of a TV studio equipped to video-record in color, a well-equipped audio studio, and a graphics room, the center provides media production services for students and faculty. The video recording facilities of the studio are used regularly as a means of enriching student learning.

Textbooks

The Nova bookstore (Nova Books) is located on the main campus in the Rosenthal Student Center and carries all the required books for courses at Nova University. Students located throughout the United States and Canada can order their texts via telephone (800) 541-6682, Ext. 4750 (United States); (800) 554-6682, Ext. 4750 (Canada or Bahamas); or FAX (305) 476-4759.



Drs. Segal and Mills.

Education Faculty and Administrative Staff

THELMA ALBRITTON

Associate Director, Master's Program in
Speech-Language Pathology
LaBonte Institute for Hearing, Language,
and Speech
A.B. Greensboro College
M.Ed. University of Oregon

HECTOR BARAJAS

Coordinator of Instructional Materials,
GEM Program
A.G.S. Central Texas College

ADELA BECKERMAN

Program Professor, Master's Programs in
Child Care, Youth Care, and Family Support
*B.S. State University of New York at
Stony Brook*
*M.S.W. State University of New York at
Stony Brook*
*Ph.D. State University of New York at
Albany*

CAROLE BENEDICT

Coordinator of Marketing,
Center for the Advancement of Education

BARRY W. BIRNBAUM

Program Professor of Education,
Ed.D. Programs in Child and Youth Studies
*B.S. Southern Illinois University at
Carbondale*
M.A. Northeastern Illinois University
Ed.D. Nova University

PAUL B. BORTHWICK, JR.

Assistant Director, GEM Program
B.S. Kent State University
M.S. University of Akron
Ph.D. University of Akron

CHIP BOWDEN

Assistant to the Director, GEM Program

WALTER CEGELKA

Assistant Director, Education
B.S. University of Scranton
M.S. Syracuse University
Ed.D. Syracuse University

ADA CHRISTIE

Assistant to the Director,
Ed.D. Programs for Higher Education

CLEVELAND O. CLARKE

Director of Education Programs,
Associate Professor
B.S. Pennsylvania State University
M.Ed. Boston University
Ed.D. Boston University

CLAYTON CONDIT

Recruiting Assistant, Western Programs
B.S. University of San Francisco

JOANN CONDIT

Coordinator of Western Programs

ELIZABETH DARVAS

Assistant Professor, Education
B.A. New York University
M.A. New York University
Ed.D. Nova University

CARMEN E. DUMAS

Program Professor of Education,
Ed.D. Programs in Child and Youth Studies
Senior Editor, *Florida ASCD Journal*
B.A. University of the West Indies
M.Ed. Howard University
Ed.D. George Washington University

PHILIP H. DeTURK

Dean of Nova College,
Associate Professor
B.A. Dartmouth College
M.A. Columbia Teachers College
Ed.D. University of Massachusetts

LLOYD A. DUVALL

Director, National Ed.D. Program
for Educational Leaders
B.S. The Ohio State University
M.A. Kent State University
Ph.D. The Ohio State University

KAMELIA EL-KOLALLI

Student Counselor, GEM Program
B.A. Alexandria University

CHARLES L. FAIRES

Associate Director, National Ed.D. Program
for Educational Leaders
B.S. Northern Arizona University
M.S. University of Georgia
Ph.D. Kent State University

SUE FASSANELLA

Assistant to the Director,
Ed.D. Programs in Child and Youth Studies

SARAH C. FLEMING

Assistant to the Director, LaBonte Institute for
Hearing, Language, and Speech

MELBA FLETCHER

Assistant Professor, Education
B.S. University of New Mexico
M.S. Troy State University
Ed.D. University of Alabama

DAVID S. FLIGHT
Program Professor, National Ed.D. Program
for Educational Leaders
A.B. University of Pennsylvania
M.A. Teachers College,
Columbia University
Ph.D. University of Chicago

VERA FLIGHT
Director of Student Development and
Admissions, Ed.D. Programs in Child and
Youth Studies
B.S. Eastern Connecticut State University
M.S. Nova University

ELANE FRIEDEL
Audiologist/Coordinator of Internships,
LaBonte Institute for Hearing, Language,
and Speech
B.S. Emory University
M.S. Emory University

FRAN FRIEDMAN
Senior Lecturer, LaBonte Institute for
Hearing, Language, and Speech
B.A. Herbert H. Lehman College
M.A. Herbert H. Lehman College

JOAN GELORMINO-FURCI
Assistant Professor, Education
B.S. Western Connecticut State College
M.S. University of Hartford
Ed.S. University of Hartford
Ed.D. Nova University

RICHARD GOLDMAN
Dean, Center for the Advancement
of Education
B.A. University of Pittsburgh
M.Ed. University of Pittsburgh
Ph.D. University of Pittsburgh

LINDA H. GOLDSMITH
Program Professor, GEM Program
B.A. University of Pennsylvania
M.A. Fordham University
Ed.D. Western Michigan University

JOSEPH GONZALEZ
Coordinator of Curriculum and Research,
Master's Program in Speech-Language
Pathology
LaBonte Institute for Hearing, Language,
and Speech
B.A. University of Florida
M.A. University of Florida
Ph.D. Florida State University

ROBERT K. GREENE
Practicum Associate, Ed.D. Programs in Child
and Youth Studies
Managing Editor, *The Child and Youth Care*
Administrator
B.A. Florida Atlantic University

MONA R. GRIFFER
Clinical Supervisor, LaBonte Institute for
Hearing, Language, and Speech
B.A. Brooklyn College
M.S. Brooklyn College

MARILYN K. GRISH
Broward County School Board Liaison
B.S. Eastern Michigan University
M.A. Eastern Michigan University
Ed.D. Nova University

EDIE R. HAPNER
Speech Pathologist, LaBonte Institute for
Hearing, Language, and Speech
B.S. University of Missouri
M.S. Fontbonne College

AUDREY H. HENRY
Program Professor, GEM Program
B.S. Tuskegee Institute
M.Ed. University of Florida
Ed.D. University of Florida

TONI HEPPLER
Director, Center for Media and Technology
B.S. Nova University
M.S. Nova University

LOIS ANN HESSER
Program Professor of Education,
Ed.D. Programs in Child and Youth Studies
B.S. State University of New York at Potsdam
M.S. State University of New York at Potsdam
Ed.D. State University of New York
at Albany

RALPH HOGGES
Program Professor, Master's Programs in Child
Care, Youth Care, and Family Support
B.S. Tuskegee University
M.Ed. Tuskegee University
Ed.D. Nova University

JOAN D. HORN
Director of Field Experiences, GEM Program
B.A. Florida Atlantic University
M.Ed. Florida Atlantic University
Ed.D. Nova University

DEE HOWARD
Student Counselor, GEM Program
B.S. Barry University

BRIAN D. HUMPHREY
Clinical Supervisor, LaBonte Institute for
Hearing, Language, and Speech
B.A. University of Rochester
M.A. University of Minnesota

JOHN A. KAUFHOLD
Program Professor, National Ed.D. Program
for Educational Leaders
B.S. West Chester University
M.Ed. University of Virginia
Ed.D. University of Virginia

GEORGE KONTOS
Program Professor, GEM Program
B.A. University of Athens, Greece
M.A. University of Texas at Austin
Ed.D. University of Houston

MARY KREUTZER
Student Counselor, GEM Program
B.S. Trenton State College

SIDI LAKHDAR
Program Professor, GEM Program
B.A. Salem State College
M.A.T. Salem State College
Ed.D. Boston University

MICHELLE LEONARD
Assistant Professor, Education
B.A. University of Alabama
M.A. University of South Alabama
Ed.D. University of Alabama

MARIA ROSA LIGAS
Adult Education Professor,
Ed.D. Programs for Higher Education
B.Ed. Universidad de Carabobo, Venezuela
M.Ed. University of Southern Mississippi
Ed.S. University of Southern Mississippi
Ph.D. University of Southern Mississippi

JOHN LOSAK
Director of University Research Services
Program Professor, Center for the
Advancement of Education
B.A. University of Florida
M.A. University of Florida
Ph.D. Florida State University

NANCY MAHECHA
Program Professor, Master's Program in
Speech-Language Pathology
LaBonte Institute for Hearing, Language,
and Speech
B.S. Hunter College
M.A. Hunter College
Ph.D. City University of New York

MARYELLEN MAHER
Program Professor of Education,
Ed.D. Programs in Child and Youth Studies
B.A. Jersey City State College
M.Ed. University of Florida
Ph.D. University of Florida

ABBEY MANBURG
Director,
Ed.D. Programs in Child and Youth Studies
A.B. Temple University
M.S. City College of New York
Ed.D. Nova University

DIANA MARCUS
Director of Program Development,
Ed.D. Programs in Child and Youth Studies
B.A. Hunter College
M.S. Queens College
Ph.D. University of Connecticut

JOAN M. MIGNERAY
Program Professor, National Ed.D. Program
for Educational Leaders
B.S. Defiance College
M.S. Bowling Green State University
Ph.D. Michigan State University

ROBERT C. MILES
Director of Licensure and State Relations
B.S. University of Oklahoma
B.A. Connecticut State College
M.A. University of Connecticut
Ph.D. University of Connecticut

JACK MILLS
Director, Master's Program in
Speech-Language Pathology
LaBonte Institute for Hearing, Language,
and Speech
B.A. University of Texas
M.A. University of Texas
Sc.D. Johns Hopkins University

PETER K. MILLS
Associate Director,
Ed.D. Programs for Higher Education
A.B. Saint Peter's College
Ed.M. Rutgers University
Ed.D. Rutgers University

AL P. MIZELL
Director of Technology,
Center for the Advancement of Education
B.Ed. University of Miami
M.S. Florida State University
Ed.S. Indiana University
Ed.D. Indiana University

ROSS E. MORETON
Director, Ed.D. Programs for Higher Education
B.S. Carson-Newman College
M.A. East Tennessee State University
Ed.D. University of Mississippi

DENNIS MURPHY
Program Professor, GEM Program
B.S. Worcester Polytechnic Institute
M.S. Northeastern University
Ph.D. Nova University

DONALD NANNEY
Coordinator of Internship Program
B.S. Wake Forest University
M.Ed. University of Florida
Ed.D. University of Miami

DEO NELLIS
Director, Western Programs
B.A. State University of New York at Buffalo
M.S. Nova University
Ed.D. Nova University

RON NEWELL
Program Professor, National Ed.D. Program
for Educational Leaders
B.S. Southern Illinois University
M.S. Southern Illinois University
Ed.D. University of Arizona

WREN NEWMAN
Clinical Supervisor, LaBonte Institute for
Hearing, Language, and Speech
B.S. Ithaca College
M.S. University of Oklahoma

VESNA OSTERTAG
Coordinator of Program Development,
GEM Program
B.A. University of Iowa
M.A. Ball State University
Ed.D. Nova University

BARBARA PACKER
Coordinator of Audiology and Aural
Rehabilitation, LaBonte Institute for Hearing,
Language, and Speech
B.A. Rutgers University
M.S. Columbia University

MARTIN B. PARKS
Vocational Education Professor,
Ed.D. Programs for Higher Education
B.A. East Washington University
B.A. East Washington University
Ph.D. The Ohio State University

ROBERT PARKS
Lecturer, Education
B.A. Belmont Abbey College
B.B.A. Florida Atlantic University
M.Ed. Florida Atlantic University

JOHANNE PECK
Director, GEM Program
B.S. University of Maryland
M.A. University of Maryland
M.S. City College of New York
Ph.D. University of Maryland

ALFRED PINKSTON
Program Coordinator, Education
B.S. Florida A&M University
M.A. University of Minnesota
Ph.D. University of Miami

ELIZABETH A. POLINER
Director of Resource Information for
External Programs
B.Ed. University of Miami
M.Ed. University of Miami
Ed.S. Nova University

NORMAN W. POWELL, JR.
Director, Master's Programs in Child Care,
Youth Care, and Family Support
B.A. The American University
M.Ed. The American University
Ed.D. The American University

SYLVIA PRANT
Assistant to the Director, Master's Programs in
Child Care, Youth Care, and Family Support
B.S. Nova University
M.S. Nova University

JORGE R. PUJOLS
PC Specialist/Network Administrator,
Center for the Advancement of Education
B.S. Florida Atlantic University

YOLANDA RIVERO
Program Professor, GEM Program
B.A. Queens College
M.A. Columbia University
Ed.D. Columbia University

WILMA J. ROBLES de MELENDEZ
Program Professor, GEM Program
B.A. University of Puerto Rico
M.A. University of Puerto Rico
*Ph.D. Universidad Complutense de Madrid,
Spain*

KAREN ROCKEY
Assistant to the Director,
National Ed.D. Program for Educational
Leaders

SHARON SANTILLI
Program Professor, National Ed.D. Program
for Educational Leaders
B.S. University of Massachusetts
M.Ed. University of Massachusetts
Ed.D. University of Massachusetts

MARY ELLEN SAPP
Director of Practicums,
Ed.D. Programs in Child and Youth Studies
B.Ed. University of Miami
M.Ed. Florida Atlantic University
Ph.D. The Ohio State University

REGINA SCHAWAROCH
Admissions Supervisor,
Center for the Advancement of Education

MARILYN SEGAL
Dean, Family and School Center
Senior Faculty Member,
Ed.D. Programs in Child and Youth Studies
B.A. Wellesley College
M.S.W. McGill University
Ph.D. Nova University

MARK SELDINE
Student Counselor, GEM Program
B.A. University of South Florida
M.Ed. Florida Atlantic University

THRISHA G. SHIVER
Director of Academic Services,
National Ed.D. Program
for Educational Leaders
B.S. Howard University
M.S. Florida International University
Ph.D. Pennsylvania State University

Nova University Degree Offerings

Doctoral and Professional Degrees

Doctor of Business Administration in:
Accounting (D.B.A./Acc.)
Business Administration (D.B.A.)
Finance (D.B.A./Fin.)
Human Resource Management (D.B.A./H.R.M.)
International Management (D.B.A./I.M.)
Marketing (D.B.A./Mkt.)

Doctor of Education (Ed.D.) in:
Adult Education
Child and Youth Studies
Computer and Information Technology
Computer Education
Educational Leadership
Health Care Education
Higher Education
Vocational, Technical, Occupational Education

Doctor of International Business Administration (D.I.B.A.) in:
International Business Administration

Doctor of Science (Sc.D.) in:
Computer Science
Information Science
Information Systems
Training and Learning

Doctor of Philosophy (Ph.D.) in:
Clinical Psychology
Family Therapy
Oceanography

Doctor of Psychology (Psy.D.) in:
Clinical Psychology

Doctor of Public Administration (D.P.A.) in:
Public Administration

Juris Doctor (J.D.) in:
Law

Specialist Degrees

Educational Specialist (Ed.S.) in:
Computer Education
Computer-Based Learning
Education

Master's Degrees

Executive Master of Business Administration in Banking (M.B.A./Ex.) in:
Business Administration

Executive Master of Business Administration in Real Estate Development and Management (M.B.A./R.E.) in:
Business Administration

Master of Accounting (M.Acc.) in:
Accounting

Master of Business Administration (M.B.A.) in:
Business Administration
Financial Services Management (M.B.A./F.S.M.)

Master of International Business Administration (M.I.B.A.) in:
International Business Administration

Master of Public Administration (M.P.A.) in:
Public Administration
Public Administration/Coastal Zone Management
Public Administration/Environmental Resources Management

Master of Science (M.S.) in:
Child and Youth Care Administration
Child Care Administration
Coastal Zone Management
Computer-Based Learning
Computer Information Systems
Computer Science Education
Education
Elder Care Administration
Family Support Studies
Family Therapy
Gerontology
Health Services Administration
Human Resource Management
Human Services
Information Systems
Information Technology and Resource Management
Management of Quality and Technology
Marine Biology
Mental Health Counseling
School Guidance and Counseling
Speech-Language Pathology
Training and Learning

Master of Arts (M.A.) in:
Liberal Studies

Bachelor's Degrees

Bachelor of Science (B.S.) in:
Accounting
Administrative Studies
Applied Professional Studies
Business Administration
Community Psychology
Computer Engineering
Computer Information Systems
Computer Science
Computer Systems
Elementary Education
Exceptional Education
General Psychology
General Studies
Hospitality Management
Legal Studies (prelaw)
Life Sciences (premedical)
Ocean Studies
Professional Management
Secondary Education

Bachelor of Arts (B.A.) in:
Liberal Arts

The provisions set forth in this document are not to be regarded as an irrevocable contract between the student and Nova University. Regulations and requirements, including tuition and fees, are necessarily subject to change without notice at any time at the discretion of the administration. The University further reserves the right to require a student to withdraw at any time, as well as the right to impose probation on any student whose conduct is unsatisfactory. Any admission on the basis of false statements or documents is void upon discovery of the fraud, and the student is not entitled to any credit for work that he or she may have done at the University. Upon dismissal or suspension from the University for cause, there will be no refund of tuition or fees. The balance due Nova University will be considered receivable and will be collected.

A transcript of a student's academic record cannot be released until all of his or her accounts, academic and nonacademic, are paid.

Any Nova University student has the right to inspect and review his or her educational record. The policy of the University is *not* to disclose personally identifiable information contained in a student's educational record without prior written consent from the student, except to University officials, to officials of another school in which the student seeks enrollment, to authorized representatives of federal or state agencies, to accrediting organizations, to parents of dependent students, under judicial order, to parties in a health or safety emergency, or when verifying graduation with a particular degree.

A student also has the right to petition Nova University to amend or correct any part of his or her educational record that he or she believes to be inaccurate, misleading, or in violation of the privacy or other rights of students. If the University decides it will not amend or correct a student's record, the student has a right to a hearing to present evidence that the record is inaccurate, misleading, or in violation of the privacy or other rights of students.

If these rights are violated, a student may file a complaint with the Department of Education. A student may obtain a copy of the Educational Privacy Act policy by requesting it in writing from the Office of the University Registrar, Nova University, Parker Building, 3301 College Avenue, Fort Lauderdale, Florida 33314. A schedule of fees and a listing of the types and locations of educational records are contained in this policy.

Nova University does not discriminate on the basis of handicap, sex, race, religion, or national or ethnic origin in admission, access, or employment for any of its programs and activities. The University registrar and director of human resources have been designated as student and employee coordinators, respectively, to assure compliance with the provisions of the applicable laws and regulations relative to nondiscrimination.

The school is authorized under federal law to enroll nonimmigrant alien students.

The Nova University general policies on student relations are on file in the Office of the University Registrar.

Nova University programs are approved for the training of veterans and other eligible persons by the Bureau of State Approval For Veterans' Training, Florida Department of Veterans' Affairs. Eligible veterans and veterans' dependents should contact the Office of the University Registrar, 3301 College Avenue, Fort Lauderdale, Florida 33314, telephone (305) 370-5685.

Dear Applicant:

Admission forms for the speech-language program have been perforated for easy separation. Please use the following check list to assure that you have submitted or requested the required documents:

- _____ Graduate Admissions Form with a \$40 application fee made payable to Nova University. Complete all information front and back, and sign the back of the application form, and mail it directly to the address listed on the form.
- _____ Transcript Request and Transcript Transmittal Form, to be sent to your undergraduate and graduate degree-conferring institutions and to any institution from which you have received credits. All must be sent to the speech-language program at Nova.
- _____ Recommendation Forms, to be distributed to three persons who can comment on your academic and professional ability to be successful in graduate study (former professors, colleagues, supervisors, and the like).
- _____ A photocopy of your teaching certificate (if certified in Florida).

In addition to the requirements, resident alien students are required to submit a copy of their alien registration card.


All of the above should be sent to:

Associate Director
Speech-Language Program
Nova University
3375 SW 75th Avenue
Fort Lauderdale, Florida 33314

Your admission may be delayed if any of the above items is incomplete.

Again, welcome to the program.

Sincerely,


Thelma Albritton, M.Ed.
Associate Director



Abraham S. Fischler Center for the Advancement of Education
 Master's Program in Speech-Language Pathology
 3375 SW 75th Avenue
 Fort Lauderdale, Florida 33314 • (305) 475-7094
 (800) 986-3223, Ext. 7094 (U.S. and Canada)

OFFICE USE ONLY

| | |
|----------------|-----------------|
| CLUSTER CODE: | _____ |
| AP STATUS: | _____ |
| APPLY CLASS: | _____ |
| ADMIT ACTION: | _____ |
| ADMIT TYPE: | _____ |
| DEGREE OBJ: | MSL |
| ACADEMIC UNIT: | SPEECH-LANGUAGE |
| INITIAL/DATE: | _____ |
| AP FEE PD: | CHK# _____ |

Graduate Admissions Application Master's Program in Speech-Language Pathology

ATTENTION: Admissions granted for starting in September, January or May.

This application must be accompanied by a \$40 nonrefundable fee.

(Please print or type)

Expected starting date / / Site location _____
Mo. Day Year City State

Soc. Sec. # / / Sex: () M () F Date of birth / /
Mo. Day Year

Last name _____ First name _____ M.I. _____ Maiden name _____

Legal/permanent address _____ Street and Number _____ Apartment _____

City _____ State _____ Zip _____ () _____ () _____
Home telephone Business telephone

Mailing address while attending Nova _____ City _____ State _____ Zip _____

EMERGENCY CONTACT:

Name _____ Street and Number _____ Apartment _____

City _____ State _____ Zip _____ () _____ () _____
Home telephone Business telephone

ACADEMIC GOAL: Master's Florida DOE Certification ASHA Certification Recertification

APPLICATIONS WILL NOT BE PROCESSED UNTIL ALL OFFICIAL TRANSCRIPTS ARE RECEIVED.

Please list all colleges and universities attended. Official transcripts from all institutions are required.

Send them to: Master's Program in Speech-Language Pathology
 Nova University
 3375 SW 75th Avenue
 Fort Lauderdale, Florida 33314

| Name of College | State | Date Started (Mo/Yr) | Date Ended (Mo/Yr) | Major Field | Degree (Mo/Yr) | G.P.A. |
|-----------------|-------|----------------------|--------------------|-------------|----------------|--------|
| | | | | | | |
| | | | | | | |
| | | | | | | |
| | | | | | | |

Please complete information on back.

Do you intend to transfer any graduate-level credits toward your degree?

Yes No If yes, list course number, title, institution, and dates:

CITIZENSHIP STATUS:

U.S. citizen
 Nonresident alien
 Resident alien

INTERNATIONAL STUDENTS:

Do you require an I-20? Yes No
If you have a visa, indicate status code _____
Country of citizenship _____
Native language _____

Resident alien students are required to submit a copy of their alien registration card. For more information, contact the International Student Office, (305) 370-5695.

ETHNIC ORIGIN DATA (this information is requested for reporting purposes only):

Check one of the following:

White (not of Hispanic origin) Hispanic origin
 Black (not of Hispanic origin) Asian or Pacific Islander
 American Indian or native Alaskan

APPLICANT STATUS AT TIME OF APPLICATION:

First time attending Nova University: Yes No

If No, in what program were you enrolled? _____

Dates of attendance _____

TEACHING CERTIFICATION:

State _____

Areas of certification _____ / _____ / _____

FINANCIAL AID:

Have you applied for financial aid? Yes No

Have you filed a College Scholarship Service financial aid form (F.A.F.)? Yes No

If yes, when was the F.A.F. sent to Princeton, New Jersey? _____

Date

I declare that the above information, to the best of my knowledge, is complete and accurate. I agree to abide by all rules and regulations of Nova University.

Applicant's signature

Date

Nova University is accredited by the Commission on Colleges of the Southern Association of Colleges and Schools to award bachelor's, master's, educational specialist, and doctoral degrees. Nova University practices a policy of nondiscrimination in employment and admission. Nova University does not discriminate on the basis of race, color, sex, age, nondisqualifying handicap, religion or creed, or national or ethnic origin. Nova University holds accreditation in speech-language pathology by the Educational Standards Board of the American Speech-Language-Hearing Association.



Abraham S. Fischler Center for the Advancement of Education
 Master's Program in Speech-Language Pathology
 3375 SW 75th Avenue
 Fort Lauderdale, Florida 33314 • (305) 475-7094
 (800) 986-3223, Ext. 7094 (U.S. and Canada)

Transcript Request and Transmittal Form Master's Program in Speech-Language Pathology

STUDENT: To request that a transcript be sent from your former school to Nova University, fill in the blanks in *both* sections.

Dear Alma Mater:

Please send to Nova University an official transcript of all academic work taken while attending your institution. Please return the transmittal with my official transcripts.

A. I attended your school from _____ to _____

B. While in attendance my name on your records was:

Last *First* *Middle/maiden*

C. My student identification number was: _____

Thank you for your assistance.

Student: _____

Sincerely,

Address: _____

Signature

TRANSCRIPT TRANSMITTAL FORM

DEAR ALMA MATER: PLEASE RETURN THIS FORM WITH TRANSCRIPT. THANK YOU.

Name _____

Last *First* *Middle/maiden*

Address _____

Street and number

City *State* *Zip*

Social Security # _____ / _____ / _____ Date _____

PLEASE SEND _____ COPIES TO: Master's Program in Speech-Language Pathology
 Nova University
 3375 SW 75th Avenue
 Fort Lauderdale, Florida 33314



Abraham S. Fischler Center for the Advancement of Education
Master's Program in Speech-Language Pathology
3375 SW 75th Avenue
Fort Lauderdale, Florida 33314 • (305) 475-7094
(800) 986-3223, Ext. 7094 (U.S. and Canada)

Recommendation Form
Master's Program in Speech-Language Pathology

Name of applicant _____
(Please print or type) *Last* *First* *Middle*

Social Security Number _____/_____/_____

Home address _____
Street and number

_____ *City* *State* *Zip*

Telephone (_____) _____

The person named above is seeking admission to an M.S. program designed for speech-language pathologists. Please address the potential of the applicant and, to the best of your ability, the likelihood of the applicant's succeeding in a program requiring high graduate standards and serious academic work. (Continue statement on reverse, if necessary.)

Do not return this form to applicant. Please mail your statement directly to: Master 's Program in Speech-Language Pathology, Nova University, 3375 SW 75th Avenue, Fort Lauderdale, Florida 33314.

Name _____ Position _____
(Please print or type)

Address _____
Street and number

_____ *City* *State* *Zip*

Telephone (_____) _____

Signature _____ Date _____



Abraham S. Fischler Center for the Advancement of Education
Master's Program in Speech-Language Pathology
3375 SW 75th Avenue
Fort Lauderdale, Florida 33314 • (305) 475-7094
(800) 986-3223, Ext. 7094 (U.S. and Canada)

Recommendation Form Master's Program in Speech-Language Pathology

Name of applicant _____
(Please print or type) *Last* *First* *Middle*

Social Security Number _____ / _____ / _____

Home address _____
Street and number

_____ *City* *State* *Zip*

Telephone (_____) _____

The person named above is seeking admission to an M.S. program designed for speech-language pathologists. Please address the potential of the applicant and, to the best of your ability, the likelihood of the applicant's succeeding in a program requiring high graduate standards and serious academic work. (Continue statement on reverse, if necessary.)

Do not return this form to applicant. Please mail your statement directly to: Master's Program in Speech-Language Pathology, Nova University, 3375 SW 75th Avenue, Fort Lauderdale, Florida 33314.

Name _____ Position _____
(Please print or type)

Address _____
Street and number

_____ *City* *State* *Zip*

Telephone (_____) _____

Signature _____ Date _____



ABRAHAM S. FISCHLER CENTER FOR
THE ADVANCEMENT OF EDUCATION
Master's Program in Speech-Language Pathology
3375 SW 75th Avenue
Fort Lauderdale, Florida 33314