

5-1-2015

## Point of View

Joel Linkewer

*Nova Southeastern University*

Follow this and additional works at: [https://nsuworks.nova.edu/uschool\\_litmag](https://nsuworks.nova.edu/uschool_litmag)



Part of the [Arts and Humanities Commons](#)

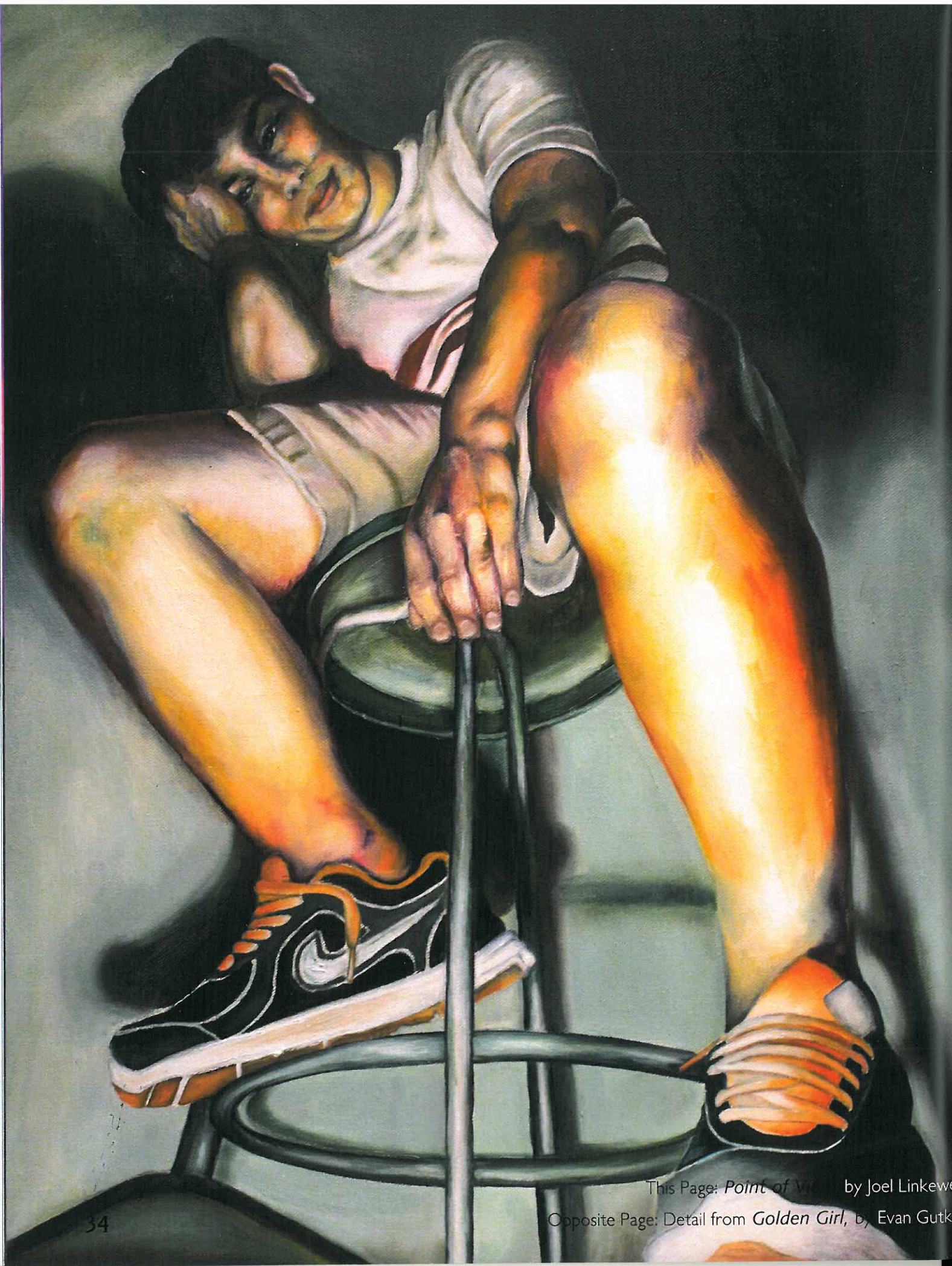
---

### Recommended Citation

Linkewer, Joel (2015) "Point of View," *Hieroglyphics: the NSU University School Literary Magazine*: Vol. 21 , Article 26.

Available at: [https://nsuworks.nova.edu/uschool\\_litmag/vol21/iss1/26](https://nsuworks.nova.edu/uschool_litmag/vol21/iss1/26)

This Artwork is brought to you for free and open access by the University School at NSUWorks. It has been accepted for inclusion in Hieroglyphics: the NSU University School Literary Magazine by an authorized editor of NSUWorks. For more information, please contact [nsuworks@nova.edu](mailto:nsuworks@nova.edu).



This Page: *Point of View* by Joel Linkewer

Opposite Page: Detail from *Golden Girl*, by Evan Gutknecht