

1998

1997-1998 NSU Knights Volleyball Media Guide

Nova Southeastern University

Follow this and additional works at: https://nsuworks.nova.edu/athletics_mediaguides



Part of the [Higher Education Commons](#), and the [Sports Management Commons](#)

N O V A S O U T H E A S T E R N U N I V E R S I T Y



Volleyball
1997-98



About Nova Southeastern University...

Nova Southeastern University is South Florida's multidisciplinary center devoted to providing educational programs of distinction from prekindergarten through the doctoral level. From its beginning in 1964, NSU has distinguished itself through innovation, offering traditional and nontraditional programs and promoting research into social and human problems of immediate and long-range concern.

The university includes academic centers in allied health, business and entrepreneurship, computer and information sciences, dental medicine, education, family education, law, medical sciences, oceanography, optometry, osteopathic medicine, pharmacy, psychology, social and systemic studies, and undergraduate studies.

The Main Campus is located on 232 acres in suburban Fort Lauderdale and features the Farquhar Center for Undergraduate Studies, Health Professions Division, Center for Psychological Studies, Shepard Broad Law Center, and University School. The East



Campus, near

downtown Fort Lauderdale, houses our School of Business and Entrepreneurship, School of Computer and Information Sciences, and the School of Social and Systemic Studies. The Oceanographic Center is located on 10 acres adjacent to Port Everglades. And the Fischler Center for the Advancement of Education is located at the North Miami Beach Campus. NSU also offers classes at the Coral Springs Campus, in locations across Florida, and in 21 states and several foreign countries.

Operating on an annual budget of approximately \$187 million, NSU is the largest private, independent institution of higher education in Florida, based on Fall Term enrollment, and has produced more than 50,000 alumni.

Nova Southeastern University admits students of any race, color, sex, age, nondisqualifying disability, religion or creed, or national or ethnic origin to all the rights, privileges, programs, and activities generally accorded or made available to students at the school, and does not discriminate in administration of its educational policies, admissions policies, scholarship and loan programs, and athletic and other school-administered programs.

Nova Southeastern University is accredited by the Commission on Colleges of the Southern Association of Colleges and Schools (1866 Southern Lane, Decatur, Georgia 30033-4097; Telephone number 404-679-4501) to award bachelor's, master's, educational specialist, and doctoral degrees.

About Broward County, about Fort Lauderdale...

Twenty-three miles of wide sandy beaches stretch enticingly along calm, azure Atlantic waters--from Palm Beach in the north to Miami in the south. More than 300 miles of navigable inland waterways, part of the Intracoastal system, wind through palatial estates, citrus groves and exotic Everglades--beckoning boats of all sizes and shapes. And there are plenty of attractions to tempt landlubbers as well.

This is Greater Fort Lauderdale. For an area covering 1,196 square miles--two thirds of which lie in the Everglades--and a population of 1.2 million, the diversity of attractions and activities on and off the beach in Broward County is surprising. It's no wonder that sun seekers from all over the world come here to play, relax, shop, dine, sportfish, dive, boat and sightsee. It's also no wonder that Broward County is one of the fastest growing residential areas in the country--visitors tend to like it so much, they move in.

Broward's climate is tropical with an average year-round temperature of 77 degrees and 3,000 hours of sunshine. Winter temperatures average a mean of 66 degrees; summer, a mean of 84 degrees. January is the coolest month of the year and August is the warmest. The heaviest rainfalls occur during August and September.

As for sports, South Florida has it all. Besides the natural abundance of water sports, boating and fishing, there are numerous inland activities, including:

golf, with more than 50 courses in Broward ranging from a par 3 to the most challenging courses; tennis, with more than 550 public and private tennis courts throughout Broward County; and parimutuels, which includes greyhound racing at Hollywood Greyhound Track, harness racing at Pompano Park Harness Track, jai-alai at Dania Jai-Alia, and thoroughbred racing at Gulfstream Park.

Fort Lauderdale is also just minutes from some of the nation's top professional sports attractions. Immediately south of Broward County lies Pro Player Stadium, home of the Miami Dolphins and Florida Marlins. The Miami Heat and Florida Panthers also play just 20 minutes south of Fort Lauderdale in the Miami Arena. The Panthers, however, will be leaving Miami for a new Broward County arena in time for their 1998-99 season. South Florida is also home to the Orange Bowl and CARQUEST Bowl, the Lipton Tennis Tournament, and The Honda Classic and Doral-Ryder Open golf tournaments.

Numerous attractions also abound, such as Butterfly World, Everglades Holiday Park, Flamingo Gardens, the Goodyear Blimp base, Grand Prix Race-O-Rama, and Sawgrass Recreation Park. These, along with the area's performing arts and shopping facilities, make Fort Lauderdale the perfect place to reside and study.

1997-98 volleyball fact sheet...

GENERAL INFORMATION

Name of School: Nova Southeastern University
Location: 3301 College Ave., Fort Lauderdale, FL
33314-7796
Founded: 1964
Undergraduate Enrollment: 1,000
Nickname: Knights
School colors: Navy blue, white, gold trim
Home court: George Mayer Gymnasium at
Broward Community College (500)
Affiliation: National Association of Intercollegiate
Athletics
Conference: Florida Sun
President: Dr. Ovid Lewis
Director of Athletics: Corey Johnson
Sports Information Director: Mike Laderman
Athletic Trainer: Hal Henderson
Assistant Trainer: Theresa Belesky
Faculty Athletic Rep: Dr. Mark Cavanaugh
Athletic Department Phone: (954) 262-8250
Athletic Department Fax: (954) 262-3926
Sports Information Phone: (954) 262-8261

KNIGHTS VOLLEYBALL

First year of volleyball: 1985-86
All-time record: 221-107
Championships/years won: 5 district titles (1985-
89), 3 Florida Sun Conference titles (1993-95), 1
NAIA Southeast Region championship (1993)
1996-97 record: 27-6
FSC record/finish: 14-2, second (fell in FSC title
game)
Starters returning: 5
Starters lost: 1

COACHING STAFF

Head coach: Charyl Morgan
Alma mater/year: University of Texas at Arlington,
1985
Record at NSU: First season
Career record: Same
Office phone: (954) 262-8264
Best time to reach Coach Morgan: 9 a.m.-3 p.m.

RETURNING KNIGHTS/1996 STATISTICS

Katie Banks: 106 GP, 69 K, 177 A, 430 D, 29 BA,
36 SA

Heather Jay: 104 GP, 42 K, 1103 A, 351 D, 28
BA, 36 SA
Michelle Mertens: 108 GP, 427 K, 366 D, 33 BA,
25 SA
Skye Miles: 109 GP, 125 K, 70 D, 34 BS, 44 BA
Sherri Waddell: 113 GP, 392 K, 341 D, 48 BS,
71 BA, 28 SA

NEWCOMERS

Lori Caporaso (Plantation, FL, transfer from
Miami-Dade Community College/Kendall,
Plantation High School)
Jennifer Clements (Erlinger, KY, St. Henry High)
Jennifer Rhoades (Plantation, FL, South Plantation
High School)
Michelle Trantham (Homestead, FL, Miami Dade
Community College/Kendall, South Dade High
School)

KEY LOSSES

Vanessa Gutierrez: 108 GP, 377 K, 532 D, 66 SA
Andrea Solheim: 103 GP, 234 D, 27 SA

DIRECTIONS TO THE GEORGE MAYER GYMNASIUM

(From the north or south) Take I-95 or the
Florida Turnpike to I-595 west. Exit at University
Drive, turn left (south). Go approximately 1 1/2
miles to SW 30 St., turn left (east). Street will run
directly into Broward Community College
campus. Upon entering campus, park to your left
near swimming pool. George Mayer Gymnasium
is just east of the pool in Building 10.

ABOUT THE KNIGHTS' NICKNAME

In 1982, the first year of athletics at Nova
Southeastern University, a contest open to the
general public came up with the "Knights"
nickname. Eight people in the area came up with
it, yet only one was chosen the winner by pulling
their name out of a hat.

The 1997-98 Nova Southeastern University Volleyball
Team Program was compiled, designed and edited by
Mike Laderman, Sports Information Director.

1997 Knights volleyball schedule...

<u>DATE</u>	<u>DAY</u>	<u>OPPONENT</u>	<u>TIME</u>
August 29	Friday	Hastings College (at Palm Beach Atlantic)	6 p.m.
August 30	Saturday	St. Leo College (at Palm Beach Atlantic)	10 a.m.
August 30	Saturday	Columbia College (at Palm Beach Atlantic)	3 p.m.
September 3	Wednesday	at Broward Community College	7 p.m.
September 5	Friday	ECKERD COLLEGE	8 p.m.
September 6	Saturday	at Florida Institute of Technology	3 p.m.
September 6	Saturday	vs. Rollins College	TBA
September 12	Friday	*EMBRY-RIDDLE AERONAUTICAL UNIVERSITY	7 p.m.
September 13	Saturday	*FLAGLER COLLEGE	12 p.m.
September 16	Tuesday	at Barry University	7 p.m.
September 18	Thursday	*at Florida Memorial College	7 p.m.
September 19	Friday	*at Webber College	7 p.m.
September 20	Saturday	*at Warner Southern College	12 p.m.
September 20	Saturday	at University of Tampa	7:30 p.m.
September 23	Tuesday	*at Palm Beach Atlantic College	7 p.m.
September 25	Thursday	*ST. THOMAS UNIVERSITY	5 p.m.
September 26	Friday	<i>at Palm Beach Atlantic College Invitational</i>	TBA
September 27	Saturday	<i>at Palm Beach Atlantic College invitational</i>	TBA
October 1	Wednesday	*NORTHWOOD UNIVERSITY	7 p.m.
October 3	Friday	*at Embry-Riddle Aeronautical University	7 p.m.
October 4	Saturday	*at Flagler College	12 p.m.
October 9	Thursday	at LaGrange College	7 p.m.
October 10	Friday	<i>at LaGrange College Tournament</i>	TBA
October 11	Saturday	<i>at LaGrange College Tournament</i>	TBA
October 15	Wednesday	*at St. Thomas University	7 p.m.
October 17	Friday	*WEBBER COLLEGE	7 p.m.
October 18	Saturday	*WARNER SOUTHERN COLLEGE	12 p.m.
October 18	Saturday	*FLORIDA MEMORIAL COLLEGE	5 p.m.
October 21	Tuesday	*PALM BEACH ATLANTIC COLLEGE	5 p.m.
October 28	Tuesday	at Miami-Dade Community College (Wolfson)	6 p.m.
October 30	Thursday	MIAMI-DADE COMMUNITY COLLEGE (WOLFSON)	5 p.m.
October 31	Friday	TRINITY INTERNATIONAL UNIVERSITY	7 p.m.
November 1	Saturday	*at Northwood University	7 p.m.
November 5	Wednesday	BROWARD COMMUNITY COLLEGE	7 p.m.
November 7	Friday	<i>Florida Sun Conference Tournament (hosted by NSU)</i>	7 p.m.
November 8	Saturday	<i>Florida Sun Conference Tournament (hosted by NSU)</i>	TBA

* Denotes Florida Sun Conference opponent

HOME GAMES played at Broward Community College's George Mayer Gymnasium (Building 10)
Italicized indicates tournament games

NOTE: Games vs. Miami-Dade Community College and Broward Community College are exhibitions for NSU and do not count towards NSU statistics and/or records

Message from the President, Ovid C. Lewis...

As the center of serious education and training, Nova Southeastern University not only aims to provide current future professionals with an ability to analyze and articulate clearly what is, but also to develop the ethics and civic-mindedness to imagine and help realize what might be.

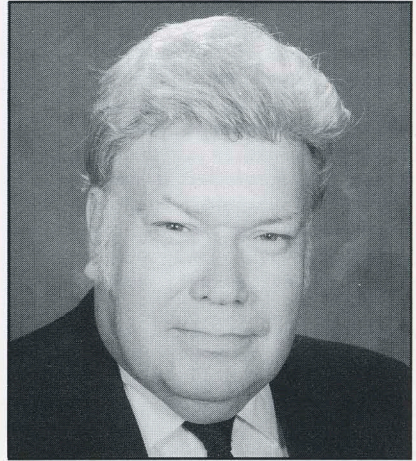
By their very nature, universities should--and must--become responsive to the problems within their communities and, in fact, become change agents to the varied challenges facing us today. Participation in athletics is an important component to the complete educational enterprise. Naturally, the most important item on your agenda will be your academic studies, but being a student-athlete places you in a unique and privileged position, one which carries a good deal of responsibility as well.

In sports competition, there is usually a "winner" and a "loser." Your ability to compete or get involved in athletics automatically makes you a winner, regardless of the final outcome or score of an event.

NSU is committed to your academic and athletic experience here. The administration is committed to programs which elevate the body as well as the mind. While you are competing during the year, remember that you will be representing Nova Southeastern University. As such, your representation should be done with class, integrity, respect and hard work.

Good luck.

Ovid C. Lewis
President
Nova Southeastern University



Dr. Ovid C. Lewis: Profile

EDUCATION: AB--Chemistry major, Duke University (1954); AB in Psychology, Rutgers University (1962); JD, Rutgers University (1960); LLM, Columbia University (1962); JSD (Dissertation on Systems Theory and Judicial Behavioralism), Columbia University (1970).

BAR ADMISSIONS: New Jersey; New Jersey, Kentucky and Ohio Federal Bars; Fourth, Fifth, Sixth and Eleventh Circuit Courts of Appeals; Tax Court and United States Supreme Court.

WORK EXPERIENCE: Judicial Clerk, Passaic County Courts (1960-61); Assistant to the Director, Legislative Drafting Fund, Columbia University (1962); Assistant Professor of Law, Case Western Reserve University (1962-64); Associate Professor of Law, Case Western Reserve University (1965-68); Professor of Law (1968-1975); Instructor in Government, Oberlin College (1971-72); Professor of Law, Chase College of Law (1975-78); Dean, Chase College of Law (1978-79); Hearing Examiner for the Ohio Civil Rights Commission (1965-79); Pro Bono Federal Law Practice (1970-79); Instructor, Kentucky Administrative Office of the Courts (1978-79); Dean, Nova University Law Center (1979-84); Vice President for Academic Affairs, Nova University (1984-94), President of Nova Southeastern University (1994-present).

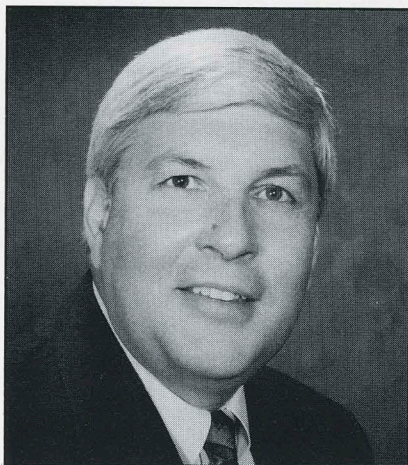
Meet the Director of Athletics, Corey Johnson...

Two years, two Florida Sun Conference All-Sports Trophies. That is the impact that Corey Johnson has had on the Nova Southeastern University department of athletics since his arrival in July of 1995. From that moment, Johnson has stressed not only the excellence in education that NSU athletes are known for, but also excellence on the field. Nova Southeastern University teams have continually responded to his challenges, as the Knights have nine first place finishes and three team national tournament appearances in various sports in just two seasons under Johnson.

A resident of Plantation, Johnson has worked in all facets of the athletics world, from being a teacher and intramural director in South Dakota, to being a head football coach in Wisconsin, to being an NCAA Division I assistant football coach at the University of Iowa and University of California at Berkeley. Johnson has seen it all in the days which led up to him accepting his first full-time collegiate administrative position as Associate Athletics Director at the University of Miami in 1983, and every day after as Director of Athletics with two other NCAA Division I programs.

It was at the University of Miami where Johnson first began making a name for himself as one of the top athletic administrators in the country. There, he was responsible for NCAA compliance and eligibility, was special projects and tournament coordinator, and was responsible for coordinating the return of Division I basketball. His supervision included 12 non-revenue sports, student-athlete housing, scholarships and financial aid. He was also there to see the university capture national championships in football, baseball and women's golf.

In 1987 he accepted a position with California State University Long Beach as Director of Athletics, Sports and Intramurals. And it was there that he proved his worth, handling a department comprised of 21 varsity and 16 club sports with more than 9,000 intramural participants (the campus had an enrollment of 34,000 students). That position led to his hiring as Director of Athletics at Colorado State University in 1991, where he was responsible for the overall operation of CSU's 16 varsity sports at a campus of 22,000 students.



Johnson departed the collegiate scene in 1994 to be Vice President of Administration and Corporate Advancement for Contemporary Services Corporation, where he worked on such special projects as the Super Bowl and World Cup Soccer. His love for collegiate athletics, however, proved to be too strong, leading to his arrival at Nova Southeastern University.

Corey Johnson: Profile

1991-94: Director of Athletics, Colorado State University. Responsible for the overall operation of a Division IA women's/men's intercollegiate sports program for a department with nine women's and seven men's teams.

1987-91: Director of Athletics, Sports and Intramurals, California State University Long Beach. Responsible for the overall program for a Division IA women's/men's intercollegiate sports program for a department with 21 varsity sports, 16 club sports, and over 9,000 intramural participants.

1983-87: Associate Athletics Director, University of Miami...1982-83: State Director of Athletics for Special Olympics, California...1978-82: Assistant football coach, University of California at Berkeley...1976-78: Assistant football coach, University of Iowa...1973-76: Teacher, Athletics Director, Chair of the Department of Physical Education, head football coach, Lancaster High School, Lancaster, Wis.

Meet the Department of Athletics support staff...

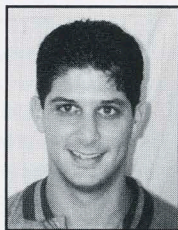
Theresa Belesky

Assistant Athletic Trainer
Joined the Knights' staff in August, 1996... Directly assists Head Trainer Hal Henderson in all aspects of the NSU Training Room... Earned bachelor's from Rowan Univ. (NJ) in Health and Physical Education, master's from Edinboro Univ. of Pennsylvania in Rehabilitation Counseling... Resides in Hollywood.



Mike Laderman

Sports Information Director
Joined the staff in August 1995 after an eight-year career as a local sports writer... Captured nine Florida Press Association Awards in six years of eligibility... Also Assistant Sports Information Director/South Florida Olympic Village in 1996, Director of Media Relations for 1996 CARQUEST Bowl... Resides in Plantation with wife, Kim.



Patrick Feely

Director of Operations
Joined the NSU family in August, 1996... Responsible for the scheduling and usage of all NSU fields... Deals directly with outside sources, including the Miami Dolphins, Major League Soccer and Umbro... Earned B.S. from Rochester Institute of Technology in Hospitality Management, Master's from Kent State University in Sport Administration... Married to Chris... Resides in Hollywood.



Gale Lang

Academic Coordinator
First began working with the department of athletics at the end of the 1996-97 athletic season... Monitors academic performances of all athletes, and serves as liaison to coaches, parents, and the Athletic Academic Advisor... Resides in Hollywood.

Beverly Welker

Assistant to the Director
Came on board the NSU staff in January 1997... Responsible for managing the Department of Athletics and directly assisting the director of athletics Corey Johnson... Enjoys golfing, square dancing... Married to Daniel... Resides in Hollywood.



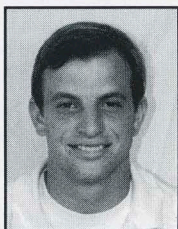
Mike Geringer

Athlete Services
First a Sports Information intern from August 1996-February 1997, was hired full-time in March 1997... Responsible for day-to-day dealings with athletes, including eligibility, rosters and team schedules... Has B.A. in Communication from Quincy Univ. (IL) and M.S. in Sports Administration from St. Thomas Univ.



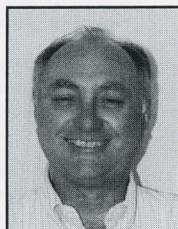
Rafi Wynn

Business Manager
Joined the Knights in August 1996... Responsible for the athletic budget, team travel arrangements and all business operations... Also assistant basketball coach... Has bachelor's degree in economics from Hobart College... Presently studying to become certified public accountant... Resides in Plantation.



Hal Henderson

Head Athletic Trainer
A mainstay of the NSU staff for the past 10 years... Responsible for directing the NSU Athletic Training Program... Also coached soccer, golf and tennis at NSU... Member of NAIA Hall of Fame... Earned bachelor's from Park College, MO and University of Colorado (master's)... Resides in Plantation.



Meet the Head Coach, Charyl Morgan...

Charyl Morgan, the former head coach of the University of Southwestern Louisiana women's volleyball team, was officially named the new head coach of Nova Southeastern University's program July 1. She inherits a program already considered one of the best in the Southeast United States. NSU, after all, has three Florida Sun Conference titles, four NAIA Southeast Region Championship tournament appearances, and one berth in the NAIA Championships, all in the past four years.

"I think it's going to be a great opportunity and a challenge for me," Morgan said. "There's already a good foundation of athletes at Nova Southeastern and a support system from the University, which will make it an easy transition. Plus, I'm looking forward to getting back down to South Florida and getting back into head coaching."

Named to the Miami-Dade Community College Hall of Fame in 1980, Morgan received her playing experience at Miami Dade Community College in 1980-81 (where she was named First Team All-American) and was a starter at the University of Texas at Arlington (where she helped them win two conference championships and finish fourth nationally in 1981). Morgan's head coaching stints include stops at both the University of Southwestern Louisiana and at Hillsborough Community College (1990-92). At USL, she turned its program around from a 9-21 record in 1994 to 18-18 in 1995.

Morgan was also a coach for the United States Volleyball Association (1992) in Clearwater, FL, and was the assistant volleyball coach at Pasco Hernando Community College (1992-93) in New Port Richey, FL. She also taught elementary



physical education for the Pasco County School District in Land O'Lakes, FL (1988-93). Her and her husband, David, currently reside in Miami.

Charyl Morgan: Profile

1994-96: Head volleyball coach, University of Southwestern Louisiana. Complete responsibility for department administration, recruiting, motivation, skill development, conditioning, scheduling and academic advising for an NCAA Division I, Sun Belt Conference women's volleyball program. Also responsible for teaching activity classes in the Physical Education Department.

1992-93: Assistant volleyball coach, Pasco Hernando Community College. Assisted head coach in recruitment of student-athletes, scheduling, budgeting and purchasing. Assisted in motivation, practicing and discipline of players.

1992: Coach, United States Volleyball Association. Worked with Clearwater Juniors (ages 13-15) developing technique, motivation and team orientation.

1990-92: Head volleyball coach, Hillsborough Community College. Full responsibility for coaching, recruiting, conditioning, purchasing equipment and academic advising.

Meet the Assistant Coach, Max Resomardono...

Max Resomardono, who spent part of last year helping the Nova Southeastern University women's volleyball team train during practices, was named assistant coach for the squad in early August, 1997.

Resomardono, 24, has spent the last 12 years of his life in volleyball, be it as a player or as a coach. As a player, he has numerous athletic awards, including: Most Improved Player (1989 club team); All-Defensive and All-Offensive Team (1989, 90); and Most Valuable Player (church league, 1993, and USVBA Tampa Tournament, 1993). He's also captained his 16's club team to championships in 1985-88, was a member of Surinam, South America's, 18's national Junior Team (1987-90), played for the Holiday Park men's and co-ed volleyball champions, and was a USVBA club team player (1992-94, 1997).

As a coach, the Plantation resident has been an assistant instructor for Broward Community College (1994-96) and Plantation High School (1993-96) before being NSU's volunteer instructor in 1996. Resomardono also still coaches the South Side 18-under club team.

Resomardono is currently a junior at Florida International University, majoring in Hospitality Management. He received an associate's degree from Broward Community College in 1993.

1997-98 Knights volleyball roster...

<u>NO</u>	<u>NAME</u>	<u>HT</u>	<u>CL</u>	<u>POS</u>	<u>HOMETOWN/PREVIOUS SCHOOL</u>
1	Skye Miles	5-11	SR	MB	Carmel, NY/Seton Hall University
2	Katie Banks	5-6	SO	SET	Boynton Beach, FL/Spanish River High
4	Heather Jay	5-4	SR	SET	Davie, FL/Miami-Dade Community Col.
11	Michelle Mertens	5-11	SR	OH	Cooper City, FL/Broward Community Col.
14	Sherri Waddell	5-11	SR	MB	Cooper City, FL/St. Thomas Aquinas High
NEWCOMERS					
	Lori Caporaso	5-11	SO	OH	Plantation, FL/Miami-Dade Com. Col.
	Jennifer Clements	5-10	FR	OH	Erlinger, KY/St. Henry High
	Jennifer Rhoades	5-9	FR	OH	Plantation, FL/South Plantation High
	Michelle Trantham	5-8	JR	MB	Homestead, FL/Miami-Dade C Col.

Head coach: Charyl Morgan (1st season)

Assistant coach: Max Resomardono (1st season)

Sports Information Director: Mike Laderman

Head trainer: Hal Henderson

Assistant trainer: Theresa Belesky

Q&A: Coach Charyl Morgan eyes 1997...

Q You're a new coach coming into a successful program, really still feeling your way around things here...will that make for an interesting season?

A "It's going to make for a great season. With the five returning players we have, plus the newcomers, it's going to make for a great season. Looking at the schedule, it looks like we should be very competitive and we could win the conference--or at least be in contention for it. We've got some great starters, like Sherri Waddell, Heather Jay, Michelle Mertens, Skye Miles...just a great group of seniors. Then, of course, sophomore Katie Banks is back, too."

Q It's got to be nice having seniors like those, especially when there's not a lot more players on the bench.

A "It is. They've already had last year playing together, they all seem to get along real well, so right now what we have to do is work on raising the level of their games. Their skill level is there, their team chemistry is there, we just have to be able to run more plays and see that the offense is more effective."

Q You're coming into this position to a place that's known for successful volleyball in the Southeast United States. Does that put pressure on you?

A "No. I think the pressure would be more coming from myself to be able to succeed. I don't feel a lot of pressure, I just feel very confident about it. Cocky? I don't know. Confidence? Yeah. And the girls on the team, they feel pretty confident, too."



Heather Jay (4) will be one of the seniors that Charyl Morgan is relying on this season.

And they're cocky in their own way, too, but you have to be. We just have to be able to get past St. Thomas University and then Montevallo."

Q So, are you cocky now?

A "I'm confident. Max (assistant coach Max Resomardonno) is going to add the cockiness. He's a confident, cocky player."

Q The girls that have been here have been to four conference title games in a row, winning three of them. Does that make things easier on you in a sense that you don't need to teach them how to win, they already know?

A "No, because I think if they're comfortable with winning then that is going to stop the learning process. They can't be

CONTINUED ON NEXT PAGE

Q&A: Coach Charyl Morgan eyes 1997...

CONTINUED FROM PREVIOUS PAGE

comfortable with it. They need to go out and beat teams very handily and not just get by."

Q That goes back to saying that there's not much bench as far as numbers-wise, so you want to get matches over with as quick as possible.

A "Not much bench as far as number of players, but the girls that are coming in will be able to step in and give some of the seniors a little bit of a rest and gain experience themselves. And we have some good newcomers who should be able to really play, like Jennifer Clements from Kentucky, Jennifer Rhoades from Plantation and Miami Dade, and Michelle Trantham and Lori Caporaso from Miami Dade. They come from good volleyball backgrounds and should be able to get some good playing time."

Q Talk about the returning starters for a little bit, and start with the returning NAIA Southeast Region Player of the Year Sherri Waddell. It's got to be nice coming to a team knowing that you've got a player like her on your side.

A "From what I've seen of her and talking with some local people that I know that have seen her play, she's just a phenomenal all-around player. Very coachable, can do a lot of things on the court...can do *everything* on the court. And with Heather Jay's assertiveness and aggressiveness that she has as a setter, those two will be able to connect very well. Then, of course, there's Michelle Mertens, who is very athletic on the court and is very good in the

classroom; Katie Banks is just a good all-around player, very athletic, very enthusiastic, a go-getter. And I've heard very good things about Skye Miles."

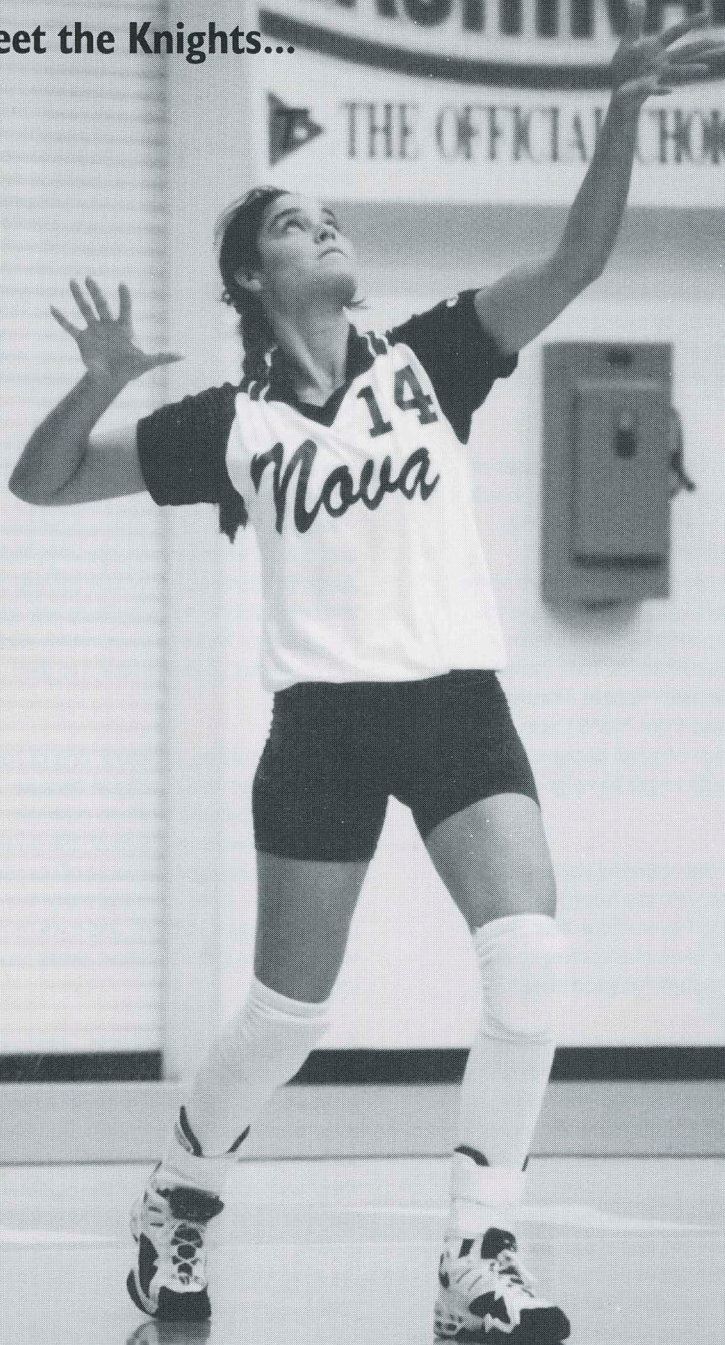
Q This is going to be a learning year for you, isn't it?

A "Yeah, just getting used to things. It'll be a learning year as far as all the administrative-end of things, getting to know everybody and the city and the high school coaches. But as far as actual volleyball on the court, that will be the easy part of it. That doesn't change a lot. But I guess the learning part will be coming in and being able to motivate each individual right away or knowing what makes each individual click, and push them to their max."

Q This could be, probably, one of your toughest years as a coach just because you've got to know when to push the buttons and when not to push the buttons, simply because of the amount of numbers on the team. If you push them one way too much, it could hurt them, and if you push too little then that could hurt just as much, too.

A "And big shoes to fill, too, with Joanna [former coach Joanna Sahm]. She did a great job with the team. She was a real good player and a good coach. But, like I said, it's going to be a great year. We have the chance to compete for the conference title again, and that's what we're going to go after. Will it be tough? I'm sure it will. But it will also be fun."

Meet the Knights...



1996 NAIA Southeast Region Player of the Year Sherri Waddell

Meet the Knights...

KATIE BANKS

Sophomore, setter, 5-6

Boynton Beach, FL/Spanish River HS, 1996



Sports Medicine major at NSU...Born May 22, 1978 in Boynton Beach, FL...Received much playing time last year as a freshman, playing in all 33 of the team's matches... 1996 season highlights include 43 assists vs. Northwood University (10/29/96), 6 kills vs. Webber College (10/11/96), 33 digs vs. Northwood University (10/29/96) and 3 block assists vs. Florida Tech (9/6/96) and Embry-Riddle (11/9/96)...Helped lead Spanish River to '95-96 regional finals in prep senior year...Spanish River's Most Spirited Player as junior and senior...Member of Florida Gold Coast Volleyball Club for six years and Junior Olympics five years...4-year varsity prep player...Enjoys running and weight lifting.

<u>YEAR</u>	<u>MP/GP</u>	<u>ATT</u>	<u>K</u>	<u>E</u>	<u>PCT.</u>	<u>ATT</u>	<u>A</u>	<u>SA</u>	<u>SE</u>	<u>RE</u>	<u>DIG</u>	<u>BS</u>	<u>BA</u>
1996	33/106	305	69	46	.075	135	177	36	29	27	430	2	29

HEATHER JAY

Senior, setter, 5-4

Davie, FL/Miami Dade CC Kendall, 1996



Psychology major at NSU...Born March 2, 1976 in Miami, FL...Named Scholar-Athlete last year...Placed on two All-Tournament Teams...Led team last season with 1,103 assists...1996 season highlights include 78 assists vs. St. Thomas University (11/9/96) in the Florida Sun Conference championship match, 26 digs vs. Embry-Riddle (11/9/96) in FSC semifinals and 3 block assists vs. St. Thomas University (10/15/96)...As member of Miami Dade Community College in 1995-96, recorded 1,312 set assists, 322 defensive digs, 62 solo blocks, 43 assisted blocks, 16 service aces and 16 kills while being named MDCC Female Athlete of the Year...Broke 10-year record for career assists at MDCC, broke set-assist record, has ninth highest number of defensive digs, and was the only player during season to play all 132 games...1994 graduate of Davie's Western High School...Captained Wildcats sophomore, junior and senior seasons while being named Most Valuable Player each year...Enjoys working out, reading, spending time with friends.

<u>YEAR</u>	<u>MP/GP</u>	<u>ATT</u>	<u>K</u>	<u>E</u>	<u>PCT.</u>	<u>ATT</u>	<u>A</u>	<u>SA</u>	<u>SE</u>	<u>RE</u>	<u>DIG</u>	<u>BS</u>	<u>BA</u>
1996	32/104	167	42	20	.132	658	1103	36	13	0	351	2	28

NSU quick facts...

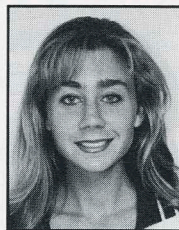
The Knights were 11-2 at the BCC George Mayer Gymnasium last year, and an even better 15-1 on the road. On a neutral court, however, NSU was only 1-3. Also, in matches that took just three games, the Knights were 22-1. In matches lasting four games they were 4-2, yet were only 1-3 in matches that went the full five.

Meet the Knights...

MICHELLE MERTENS

Senior, outside hitter, 5-11

Cooper City, FL/Broward Comm. College, 1996



Accounting major at NSU...Born August 26, 1976, in Miami, FL...One of the top scholar-athletes at Nova Southeastern University, making the Dean's List with a 3.94 grade point average and capturing the volleyball Coach's Award...Led Knights this past season (second in NAIA Southeast Region) with 427 kills...1996 season highlights include 26 kills and 27 digs vs. St. Thomas University (11/9/96) in Florida Sun Conference title match, and 4 block assists vs. Eckerd College (8/30/96)...Also a member of NSU's women's tennis team...Led Broward Community College in 1995 with 10 kills per game, was team digs leader, had 3.20 efficiency and a game-high 32 kills vs. Miami-Dade Community College/Kendall...Was BCC's Most Valuable Player and named among Who's Who Among Students in American Junior Colleges...Shared starting position during freshman season for Barry University squad which finished 5th in NCAA Division II in 1994...1994 graduate of Cooper City High School (Cooper City, FL)...Three-year captain for Cowboys, being named First Team All-County as junior and senior...Also played softball at Cooper City, helping to lead team to consecutive state titles as shortstop in sophomore and junior seasons...1994 Cooper City High School and Broward County Scholar Athlete...Enjoys basketball, strength training and slow-pitch softball.

<u>YEAR</u>	<u>MP/GP</u>	<u>ATT</u>	<u>K</u>	<u>E</u>	<u>PCT.</u>	<u>ATT</u>	<u>A</u>	<u>SA</u>	<u>SE</u>	<u>RE</u>	<u>DIG</u>	<u>BS</u>	<u>BA</u>
1996	33/108	1110	427	123	.274	2	9	25	19	18	366	5	33

SKYE MILES

Senior, middle blocker, 5-11

Carmel, NY/Seton Hall University, 1995



Liberal Studies/Pre-Law major at NSU...Born December 20, 1975...Was an instrumental part in NSU's success this past season, appearing in all matches played...Second on the Knights in both solo blocks (with 34) and block assists (with 44)...1996 season highlights include 8 kills vs. Palm Beach Atlantic College (9/28/96), 9 digs vs. University of North Florida (9/7/96), 3 solo blocks vs. PBAC (9/28/96), Clearwater Christian (9/28/96) and Warner Southern College (10/12/96), and 5 block assists vs. St. Thomas University (10/15/96) and Embry-Riddle (11/9/96)...Gained first collegiate playing experience for Big East regular season champion Seton Hall University in 1994...Graduated from Carmel High School in 1994...Named to All-League team for sophomore, junior and senior seasons, All-Section team as a junior and senior...Prep varsity captain for 3 years...Helped Carmel High to league championship in 1993-94...Member of 1992-93 Hudson Valley team that captured the Bronze medal of the Empire State Games...Hobbies include reading, dancing.

<u>YEAR</u>	<u>MP/GP</u>	<u>ATT</u>	<u>K</u>	<u>E</u>	<u>PCT.</u>	<u>ATT</u>	<u>A</u>	<u>SA</u>	<u>SE</u>	<u>RE</u>	<u>DIG</u>	<u>BS</u>	<u>BA</u>
1996	33/109	401	125	38	.217	8	5	2	8	0	70	34	44

Meet the Knights...

SHERRI WADDELL

Senior, middle blocker, 5-11

Cooper City, FL/St. Thomas Aquinas High, 1994



Elementary Education major at NSU...Born April 12, 1976 in Plantation, FL...One of the top players to ever grace the NSU courts...Named 1996 NAIA All-American Honorable Mention...Honored as 1996 NAIA Southeast Region Player of the Year and Florida Sun Conference Player of the Year...Led the Knights last season with 48 solo blocks and 71 block assists, while being second on team with 392 kills...1996 season highlights include 24 kills vs. Embry-Riddle (11/9/96) in Florida Sun Conference semifinals, 24 kills and 5 solo blocks vs. St. Thomas University (11/9/96) in FSC title match, and 6 block assists vs. Florida Tech (9/6/96)...Named to both All-Conference and All-Southeast Region teams in each of her 3 seasons at Nova Southeastern University...Led 1995-96 Knights with 123 digs, 43 solo blocks and 64 block assists...Enjoys water sports.

YEAR	MP/GP	ATT	K	E	PCT.	ATT	A	SA	SE	RE	DIG	BS	BA
1994	37/116	697	332	140	.275	37		23	52	55	19	344	57 119
1995	30/91	638	268	115	.240	0		8	36	33	24	123	43 64
1996	33/113	849	392	124	.316	7		3	28	28	16	341	48 71
TOT	100/320	2184	992	379	.277	44		34	116	116	59	808	148 254

Newcomers...

LORI CAPORASO

Elementary Education major at NSU...Born July 28, 1977, in Miami, FL...5-foot-11 sophomore...Outside Hitter...Transfer from Miami-Dade Community College/Kendall...Was Academic All-American, FCCAA State All-Academic Team, and Scholar Student Award winner last year at MDCC, while helping team to state championship match...1996 graduate of Plantation High School...Was both middle blocker and outside hitter in high school...Has many championships under her belt with various teams, including: MDCC League champions (1996), Friendship Tourney vs. Brazil, Florida Region District 4 16's, 1994 Regional/State champs, Volleyfest Tournament, and Florida Region District 4 18's Elite...Has also played for Everglades Flamingo Club as a starter for five years...Enjoys writing poetry, ceramics and playing the piano.

JENNIFER CLEMENTS

Life Sciences major at NSU...Born February 24, 1979, in Covington, KY...Lists Erlinger, KY, as hometown...A 5-foot-10 outside hitter...1997 graduate from St. Henry High School...Helped prep team capture regionals and advance to state's this past season as co-captain...Had 181 set assists, 83 digs, 49 block assists, 17 solo blocks last year in helping team to No. 5 ranking in state...Named the 1997 Female Crusader of the Year for excellence in high school...All-Region player as a sophomore...4-year basketball player, too...Coached 6th grade basketball team back home...Enjoys swimming and roller blading.

JENNIFER RHOADES

Life Sciences major at NSU...Born February 13, 1979, in Broward County, FL...Still resides in Plantation, FL. A 5-foot-9 outside hitter...1997 graduate of South Plantation High School...Helped Paladins advance to regional tournament this past season...Also played club ball for Southside...Member of varsity volleyball squads as sophomore, junior, senior...Played freshman season at Coconut Creek High School.

Newcomers...

MICHELLE TRANTHAM

Physical Education major at NSU...Born December 19, 1976 in Homestead, FL...Middle Blocker...Transfer from Miami-Dade Community College/Kendall...Helped MDCC to second place finish in state championships last season...Named to FJCAA All-State Academic Team, Sunshine Conference All-Conference Team...1995 graduate of South Dade High School...Enjoys gardening.

1996-97 game-by-game results...

OVERALL RECORD: 27-6

FLORIDA SUN CONFERENCE RECORD: 14-2

DATE	OPPONENT	SCORE	GAME SCORES	RECORD
8/30	ECKERD COLLEGE	W 3-0	15-7, 17-15, 15-8	1-0
9/1	MIDLAND LUTHERAN	W 3-0	15-7, 15-11, 17-15	2-0
9/5	TRINITY INTERNATIONAL	W 3-0	15-2, 15-7, 15-6	3-0
9/6	FLORIDA TECH	2-3 L	15-11, 3-15, 13-15, 15-11, 12-15	3-1
9/7	<i>University of North Florida</i>	1-3 L	13-15, 15-12, 3-15, 4-15	3-2
9/13	*EMBRY-RIDDLE AERO UNIV	W 3-0	15-7, 15-11, 15-7	4-2
9/14	*FLAGLER COLLEGE	W 3-0	15-2, 15-1, 15-3	5-2
9/17	LYNN UNIVERSITY	W 3-0	15-1, 15-4, 15-3	6-2
9/20	*at Webber College	W 3-0	15-5, 15-5, 15-6	7-2
9/21	*at Warner Southern College	W 3-0	15-0, 15-5, 15-0	8-2
9/24	*at Palm Beach Atlantic College	W 3-0	15-4, 15-5, 15-13	9-2
9/25	*FLORIDA MEMORIAL COLLEGE	W 3-0	15-5, 15-9, 15-8	10-2
9/26	*ST THOMAS UNIVERSITY	0-3 L	11-15, 4-15, 9-15	10-3
9/27	<i>Lambuth University</i>	W 3-0	15-1, 15-5, 15-3	11-3
9/27	<i>St. Andrews</i>	W 3-0	15-9, 15-7, 15-6	12-3
9/28	<i>Clearwater Christian</i>	W 3-0	16-14, 15-5, 15-10	13-3
9/28	<i>Palm Beach Atlantic College</i>	W 3-0	15-6, 15-4, 15-3	14-3
9/28	<i>Clearwater Christian</i>	W 3-1	14-16, 15-4, 15-13, 15-4	15-3
10/1	*NORTHWOOD UNIVERSITY	W 3-0	15-3, 15-6, 15-5	16-3
10/4	*at Flagler College	W 3-0	15-4, 15-3, 15-7	17-3
10/5	*at Embry-Riddle Aero Univ	W 3-1	4-15, 15-1, 15-8, 15-13	18-3
10/11	*WEBBER COLLEGE	W 3-0	15-1, 15-6, 15-6	19-3
10/12	*WARNER SOUTHERN	W 3-0	15-2, 15-4, 15-1	20-3
10/12	*at Florida Memorial College	W 3-0	15-7, 15-3, 15-3	21-3
10/15	*at St. Thomas University	2-3 L	9-15, 15-6, 15-13, 13-15, 7-15	21-4
10/16	at Lynn University	W 3-0	15-0, 15-2, 15-3	22-4
10/22	*PALM BEACH ATLANTIC	W 3-1	15-9, 12-15, 15-11, 15-1	23-4
10/23	at Trinity International Univ	W 3-0	15-1, 15-3, 15-6	24-4
10/29	*at Northwood University	W 3-2	14-16, 15-4, 12-15, 15-4, 15-13	25-4
11/8	<i>Flagler College (FSC Tourney)</i>	W 3-0	15-3, 15-2, 15-4	26-4
11/9	<i>Embry-Riddle (FSC Tourney)</i>	W 3-1	15-9, 15-12, 14-16, 15-11	27-4
11/9	<i>St. Thomas (FSC Tourney finals)</i>	2-3 L	14-16, 6-15, 15-11, 16-14, 14-16	27-5
11/15	<i>Univ of Montevideo (SE Regions)</i>	1-3 L	7-15, 12-15, 15-7, 13-15	27-6

* Denotes Florida Sun Conference match

HOME GAMES

Italicized indicates tournament game

1996-97 individual statistics...

PLAYER	MP/GP	ATT	KILL	K/GM	E	PCT	ATT	AST	A/GM	SA	SE	RE	DG	BS	BA
Katie Banks	33/106	305	69	0.651	46	.075	135	177	1.670	36	29	27	430	2	29
V. Gutierrez	32/108	1009	377	3.491	148	.227	6	1	0.009	66	49	18	532	3	14
Heather Jay	32/104	167	42	0.404	20	.132	658	1103	10.606	36	13	0	351	2	28
Mona Lai	14/26	78	18	0.692	20	-.02621		16	0.615	9	6	8	91	3	11
M. Mertens	33/108	1110	427	3.954	123	.274	2	9	0.083	25	19	18	366	5	33
Skye Miles	33/109	401	125	1.147	38	.217	8	5	0.046	2	8	0	70	34	44
R. Murphy	5/7	16	3	0.429	6	-.188	0	0	0.000	4	2	2	17	0	0
Kristen Phass	6/8	44	14	1.750	5	.205	0	0	0.000	2	3	2	14	0	2
A. Solheim	31/103	75	10	0.097	19	-.120	3	1	0.010	27	33	22	234	0	2
S. Waddell	33/113	849	392	3.469	124	.316	7	3	0.027	28	28	16	341	48	71
TOTALS	33/113	4054	1477	13.071	549	.229	840	1315	11.637	235	190	115	2404	97	234

A look back: The 1996 volleyball season...

August 30, 1996: The Knights opened their regular season with a convincing 15-7, 17-15, 15-8 win past NCAA Division II school Eckerd College. Heather Jay led the Knights with 30 assists and 10 digs, while Vanessa Gutierrez recorded 13 kills and 10 digs...

September 1: Make it two in a row for the Knights, as they defeated visiting Midland Lutheran College 15-7, 15-11, 17-15. Jay had 36 assists, 13 digs and 3 aces, Gutierrez 16 kills, 13 digs and 2 aces, Sherri Waddell 10 kills, 8 digs, Michelle Mertens 14 kills... September 5: Not only did the Knights win their third straight match, but they've done it without losing a set. This time it's Trinity International University which falls, 15-2, 15-7, 15-6. Waddell paved the way with 10 kills, 7 digs and 2 aces... September 6: Both streaks ended in an 11-15, 15-3, 15-13, 11-15, 15-12 loss to Florida Tech. Gutierrez still had 12 kills, 20 digs, 1 ace... September 7: The Knights lost for the second straight day, this time 15-13, 12-15, 15-3, 15-4 to NCAA Div. II University of North Florida. Their biggest loss, however, was when Gutierrez went down to injury, spraining her right ankle in the fourth game... September 13: Thanks to a full week off, Gutierrez came back to spark the Knights to a 15-7, 15-11, 15-7 win past Florida Sun Conference rival Embry-Riddle Aeronautical University... September 14: It took just 45 minutes for the Knights to dispense of Flagler College, winning it 15-2, 15-1, 15-3 in an FSC match. Katie Banks recorded 9 assists, 7 digs and 2 aces, while Jay also had 9 assists... September 17: Make that two matches in a row lasting just 45 minutes. This time it's against Lynn University, and this time it's a 15-1, 15-4, 15-3 victory. Waddell had 10 kills, 2 aces, 2 digs and 1 block solo... September 20: The winning streak goes to four thanks to a 15-5, 15-5, 15-6 win at Webber College. Waddell and Mertens had 12 kills and 10 digs each... September 21: Forget 45 minutes, this one was over in 41. The fifth win in a row for NSU was easier than most, defeating host Warner Southern College 15-0, 15-5, 15-0. Mertens led the way with 10 kills, 9 digs and 1 ace... September 24: The Knights put in its finest performance of the season, routing host Palm Beach Atlantic College 15-4, 15-5, 15-13 for their sixth straight win. Jay recorded 39 assists, 15 digs, 4 kills and 2 blocks... September 25: The win streak goes to seven with a 15-5, 15-9, 15-8 win against FSC rival Florida Memorial College. This time, Jay had 41 assists, 13 digs, 5 kills, 2 block assists and 1 ace. Mertens also had 16 digs, 14 kills, 3 aces and 1 block assist... September 26: The Knights saw their seven-match win streak come to a close as FSC rival St. Thomas University defeated them, 15-11, 15-4, 15-9... September 27: NSU began a new win streak at the Palm Beach Atlantic College Fall

CONTINUED ON NEXT PAGE

A look back: The 1996 volleyball season...

CONTINUED FROM PREVIOUS PAGE

Classic, defeating both Lambuth University and St. Andrews Presbyterian... September 28: The Knights win three matches to claim the PBAC Fall Classic title. Thanks to their performances in the two-day event, Jay, Gutierrez and Waddell were named to the All-Tournament Team...

October 1: The hot streak continues as the Knights defeat visiting Northwood University, 15-3, 15-6, 15-5 in just one hour. Jay had 27 assists, 12 digs, 2 block assists, while Mertens had 18 kills, 5 digs, 1 block assist... October 4: NSU's seventh straight win comes at Flagler College, 15-4, 15-3, 15-7. Waddell had 15 kills, 12 digs and 4 blocks. Gutierrez added 12 kills, 17 digs... October 5: Gutierrez posts 10 kills, 13 digs, while Jay tallies 24 assists, 9 digs to lead NSU to 4-15, 15-1, 15-8, 15-13 win at Embry-Riddle... October 11: The win streak goes to nine as visiting Webber College falls 15-1, 15-6, 15-6. This time, Banks paves the way with 17 digs, 18 assists, 6 kills and 1 ace. Waddell also scores 16 kills, 10 digs, 3 block assists and 1 solo block... October 12: Warner Southern falls 15-2, 15-4, 15-1 as Jay records 44 assists, 13 digs, 1 ace... October 12: Just five hours after defeating the Royals, NSU travels to Miami to defeat Florida Memorial in three sets for its 11th straight win. That makes it 18 wins in 19 matches, with St. Thomas next on the schedule... October 15: The streak is snapped as the Knights fall 15-9, 6-15, 13-15, 15-13, 15-7. Jay puts in a winning performance, though, with 49 assists, 18 digs, 3 block assists and 1 solo block, as does Gutierrez, who tallies 22 kills, 28 digs, 2 block assists and 1 service ace... October 16: The Knights rebounded from their loss with a vengeance, destroying Lynn University in just 30 minutes 15-0, 15-2, 15-3... October 22: Graduating seniors Gutierrez and Mona Lai put in solid performances in their last home games ever, leading the Knights past Palm Beach Atlantic College 15-9, 12-15, 15-11, 15-1... October 23: The quickest match of the season, a 15-1, 15-3, 15-6 win past Trinity International that takes just 25 minutes...

November 7: The Florida Sun Conference announced its All-Conference Team, which included Waddell being named Player of the Year and Gutierrez... November 8: The No. 2 seeded Knights roll past Flagler College 15-3, 15-2, 15-4 in the first round of the FSC Tourney at Embry-Riddle in Daytona. Gutierrez had 8 kills, 13 digs and 3 aces to lead the way. Banks led with 20 digs... November 9: In semifinal action NSU defeats Embry-Riddle 15-9, 15-12, 14-16, 15-11, with Waddell pacing the club with 24 kills. Gutierrez added 20 kills... November 9: The Knights fall in a thrilling FSC championship match to St. Thomas University, 16-14, 15-6, 11-15, 14-16, 16-14. In the loss, Gutierrez had a season high 31 kills and 40 digs. Waddell also collected 22 kills, 24 digs and 8 blocks, while Jay recorded a season high 78 assists and 21 digs. Mertens added 26 kills, 27 digs. Waddell and Gutierrez were also named to the All-Tournament Team... November 11: Gutierrez was named the FSC's and NAIA Southeast Region Co-Player of the Week for her performances in the FSC tournament... November 15: NSU's season came to an end as the University of Montevallo (AL) defeated the Knights for the third consecutive year in the playoffs, 15-7, 15-12, 7-15, 15-13, in the NAIA Southeast Region semifinals. The Knights, seeded third in the tournament, were led in the loss by Waddell (who recorded 20 kills, 12 digs, 2 solo blocks) and Mertens (20 kills, 11 digs). Jay also had 46 assists, 19 digs, 2 aces, while Banks had 26 digs, 1 ace, 1 solo block... November 26: Waddell was named the 1996 NAIA Southeast Region Volleyball Player of the Year.

Setting the record straight...

ALL-TIME RECORDS VS. OPPONENTS

Barry University	4-11
Bellevue	2-0
Bethune-Cookman	6-2
Clearwater Christian	3-0
Columbus College	2-0
Converse College	2-0
Dordt College	1-1
Eckerd College	18-4
Embry-Riddle Aeronautical Univ	6-0
Flagler College	20-4
Florida Atlantic University	3-8
Florida Institute of Technology	6-14
Florida International University	2-4
Florida Memorial College	25-4
Florida Southern College	0-1
Hastings (NE)	0-1
Huntingdon (AL)	4-0
LaGrange College	4-0
Lambuth University	1-0
Livingston College	1-0
Lynn University	2-0
Madonna University	0-3
Midland Lutheran (NE)	2-0
Montevallo, University of	1-4
Mount Mercy (IA)	0-1
North Alabama, University of	0-1
North Florida, University of	0-6
Northwood University	6-0
Oglethorpe University	2-0
Palm Beach Atlantic College	18-8
Queens College	2-0
Rollins College	3-6
Saint Leo College	11-2
Savannah School of Art and Design	1-0
Sioux Falls College	1-0
South Carolina, Aiken	0-1
South Carolina, Spartanburg	0-4
St. Andrews	2-0
Stetson University	1-3
St. Thomas University	9-3
Teikyo Marycrest University	1-0
Trinity International University	10-0
Warner Southern College	17-3
Webber College	18-4
West Georgia College	2-0
Westmont (CA)	0-2

TEAM RECORDS

Wins/season: 30 (1993, 1994)
 Kills/game: 93 (vs. Flagler College, 11/13/93)
 Service aces/match: 19 (vs. Converse College, 9/25/93)
 Blocks, assist/match: 24 (vs. Flagler, 10/29/93)
 Blocks, team/match: 9 (vs. Florida Tech, 9/25/93)
 Digs/match: 47 (vs. Northwood Univ., 10/29/96)

INDIVIDUAL RECORDS

Service aces/match: 9 (Natalie Kramer, 1993)
 Service aces/season: 83 (Natalie Kramer, 1993)
 Service aces/career: 266 (Natalie Kramer, 1990-93)
 Set assists/match: 86 (Leslie Romero vs. Converse College, 11/20/93)
 Set assists/season: 1353 (Leslie Romero, 1993)
 Set assists/career: 2453 (Leslie Romero, 1993-95)
 Kills/season: 568 (Natalie Kramer, 1993)
 Kills/career: 1424 (Natalie Kramer, 1990-93)
 Kill efficiency/season: .401 (Natalie Kramer, 1993)
 Block solos/match: 6 (Natalie Kramer vs. Florida Tech, 9/25/93)
 Block assists/match: 11 (Natalie Kramer vs. Flagler College, 10/29/93)
 Block solos/season: 63 (Natalie Kramer, 1993)
 Block assists/season: 103 (Natalie Kramer, 1993)
 Digs/match: 42 (Vanessa Gutierrez vs. St. Thomas University, 11/9/96; Anni Palacio vs. Converse College, 11/20/93)
 Digs/season: 615 (Natalie Kramer, 1993)
 Digs/career: 1698 (Vanessa Gutierrez, 1993-96)

YEAR-BY-YEAR RESULTS

1985*	9-4	.692	Arthurjong-A-Kiem
1986*	16-12	.571	Arthurjong-A-Kiem
1987*	19-7	.731	Arthurjong-A-Kiem
1988*	17-8	.680	Jay Schultz
1989*	11-8	.579	Gary Groth
1990	10-13	.435	Gary Groth
1991	12-8	.600	Gary Groth
1992	16-14	.533	Gary Groth
1993**#	30-9	.769	Pegie Moran
1994**	30-10	.750	Pegie Moran
1995**	24-8	.750	Joanna Sahn
1996	27-6	.818	Joanna Sahn

* Denotes district champions

** Denotes Florida Sun Conference champions

Denotes NAIA SE Region champions

About the Florida Sun Conference...

The Florida Sun Conference (FSC) is one of the newest intercollegiate athletic conferences in the National Association of Intercollegiate Athletics (NAIA). The conference consists of nine colleges and universities and spans across the entire state of Florida.

The Florida Sun Conference is comprised of Embry-Riddle Aeronautical University, Flagler College, Florida Memorial College, Northwood University, Nova Southeastern University, Palm Beach Atlantic College, St. Thomas University, Warner Southern College and Webber College.

The institutions in the conference believe in strong educational commitment combined with balanced athletic competition. In just seven years of existence, four different FSC institutions have received the Conference All Sports trophy signifying achievement in their overall athletic program--with Nova Southeastern University leading the way with three in a row, and four in the last five years.

Originally formed in March of 1990 as the Florida Intercollegiate Athletic Conference, the FSC was established as a conference for small independent colleges and universities within the NAIA. The conference name was changed in 1992 to its current name.

The league sponsors championships in the following men's sports: baseball, basketball, cross country, golf, soccer and tennis. The FSC also sponsors championships in the following women's sports: basketball, cross country, soccer, softball, tennis and volleyball.

In its six short years of existence, the FSC has quickly established post-season tradition with automatic NAIA Tournament bids to the conference champion in baseball, men's basketball, volleyball and soccer. Also, Florida Sun Conference teams are frequently found in the NAIA Top 25 National Polls in all sports. Individually speaking, athletes from the FSC have proven themselves worthy of national recognition year after year.

In addition to recognizing outstanding achievements on the playing fields in all 12 sports, the conference also recognizes achievement in the classroom. Each year an Academic All-Florida Sun Conference Team is selected. Last year, 102 athletes throughout the nine conference institutions received the award. The Athletic Directors of the nine member institutions serve as the Florida Sun Conference Board of Directors.



About the NAIA...

The National Association of Intercollegiate Athletics (NAIA) is a completely autonomous association currently administering intercollegiate athletic programs to approximately 400 fully-accredited colleges and universities, more than 30 percent of all four-year collegiate athletic programs in the United States. The Association has member colleges in 47 of the 50 states and in British Columbia. The organization is responsibly governed by a 32-member Council of Presidents.

The Association administers 24 separate championships in 13 sports. Approximately 66,000 student-athletes participate annually in NAIA-sanctioned varsity athletic programs.

The National Association of Intercollegiate Athletics stands prepared to administer programs and championships which provide "education through athletics" for each and every NAIA student-athlete. The future of 66,000 young people is too important to handle any other way.



National Association of Intercollegiate Athletics
6120 South Yale Ave., Suite 1450
Tulsa, OK 74136-4223
(918) 494-8828

NOVA
SOUTHEASTERN
UNIVERSITY

DEPARTMENT OF ATHLETICS
3301 College Avenue
Fort Lauderdale, Florida 33314-7796