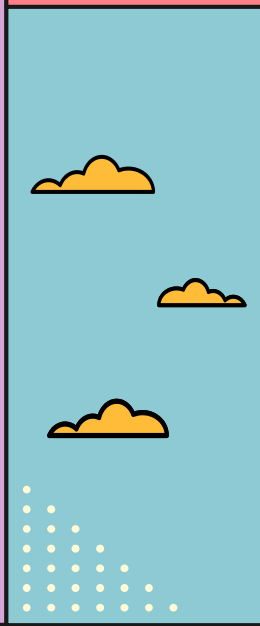
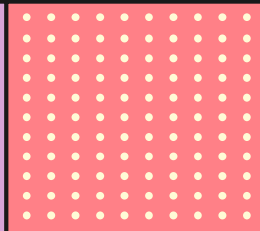


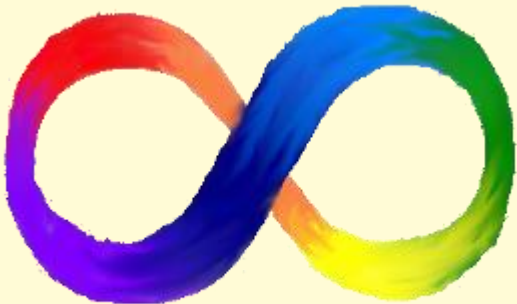
# Health Literacy Project: Awareness of Autism in Black and Brown Communities

By Varun Kota



# Purpose

- This health literacy project focus on two main points:
- ASD diagnosis and the African American community
- ASD stands for Autism Spectrum Disorder
- It can be diagnosed at the ages of 15 to 18 months old
- However, prior studies and research demonstrated a delayed diagnosis in African American communities
- The purpose of this project is to identify causes for this delayed diagnosis and develop/stage a health literacy intervention



# UM-NSU CARD



## Mission Statement

*"CARD seeks to provide support and assistance with the goal of optimizing the potential of people with Autism, dual sensory impairment, and related disabilities."*

## Importance

Card is a statewide technical assistance program. They provide essential services to individuals with Autism or related disabilities. UM-NSU CARD serves the South Florida area

## Services

UM-NSU CARD aids in three steps. Screening, Assessments, and Intervention. Each area is important helping those who have Autism.

# Field Supervisor: Shantigra Williams

Clinical support administrator

AMC project leader



# Supervisor: Carole Zangari

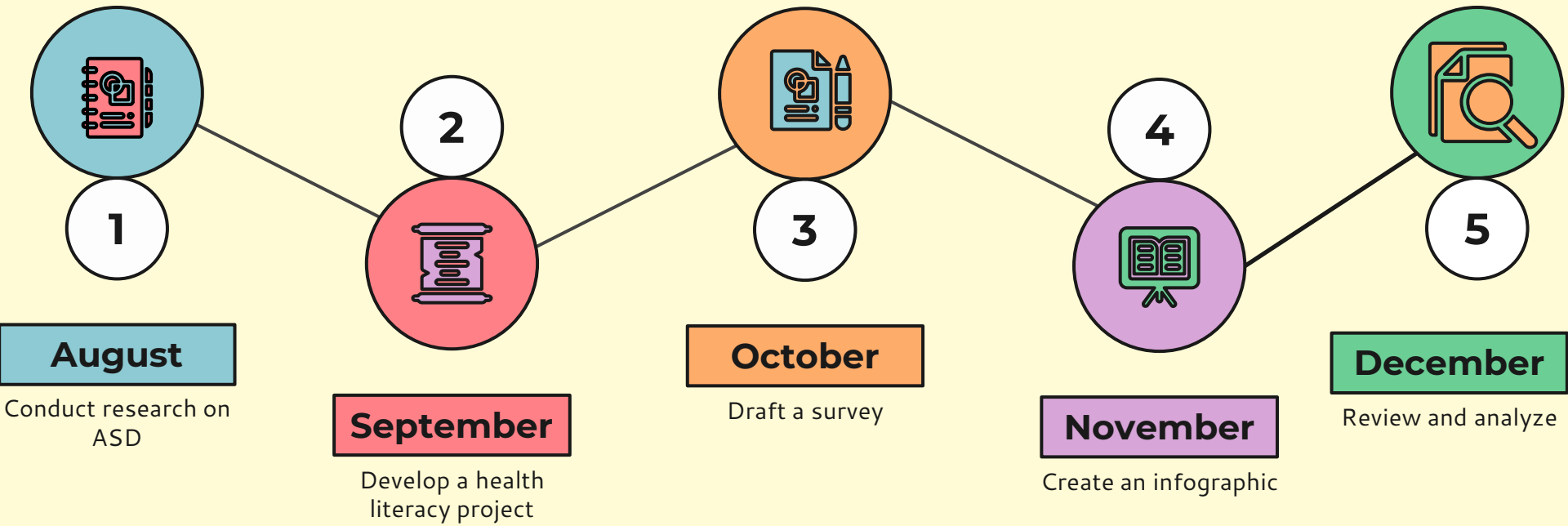
Executive Director of NSU  
CARD

Professor of Speech-Language  
Pathology

Board Certified Specialist in  
Child Language



# Project Timeline



# Survey



## Health Literacy Project Questionnaire

Disclaimer: This questionnaire is strictly confidential and anonymous, the intended use for the questionnaire is educational. The distribution of the questionnaire will occur through UM-NSU CARD, please answer to the best of your abilities as this will provide information on community resources and potentially help other families.

🕒 Takes X min

**Yes, I'll help**

press Enter ↵

# Infographic

## GUIDE TO AUTISM BEFORE AND AFTER DIAGNOSIS

This infographic serves to guide caregivers through Autism in the family



Autism Spectrum Disorder is a developmental brain disorder present during early childhood. It may affect an individual's communication, behavioral, sensory tolerance, and social abilities. Can be diagnosed as young as 15 to 18 months old.

### SIGNS (by gender)

- Hyperactivity
- Problems playing alone
- Trouble Sleeping
- Epilepsy
- Special Interest
- Tantrums
- Learning Disability

### MYTHS

- "Autism does not happen to Black children".
- "They are just being a boy...".
- "They will grow out of it".
- "People with Autism cannot have fulfilling lives".
- "Every person with Autism is the same".
- "Only boys have autism".

### DIAGNOSIS OF AUTISM

Providers who may help:

- UM-NSU CARD
  - Case Manager
- Developmental Pediatrician
- Pediatric Neurologist
- Early Steps < 3 years old child
- FDLRS > 3 years old child
- Psychologist



### SERVICES AFTER DIAGNOSIS

**um-nsu-card**  
University of Miami *North Southwestern University*  
Center for Autism & Related Disabilities

- UM-NSU CARD
  - ZVI Broward
  - Broward Children's Center
  - Autism Society of Florida
  - Autism Navigator

### IMPORTANT NOTICE

Early diagnosis of Autism allows parents to create a developmental plan for their children! The diagnosis of Autism Spectrum Disorder can help families access resources. It is of greatest importance to access diagnosis as early as possible. This will empower your family to understand what supports are needed to support your children through their development.



**USEFUL LINKS:**

- [https://www.um.edu/research/autismnavigator](#)
- [https://www.autismnavigator.org/autismnavigator](#)
- [https://www.autismnavigator.org/autismnavigator](#)
- [https://www.autismnavigator.org/autismnavigator](#)
- [https://www.autismnavigator.org/autismnavigator](#)
- [https://www.autismnavigator.org/autismnavigator](#)
- [https://www.autismnavigator.org/autismnavigator](#)
- [https://www.autismnavigator.org/autismnavigator](#)
- [https://www.autismnavigator.org/autismnavigator](#)
- [https://www.autismnavigator.org/autismnavigator](#)

**USEFUL PHONE NUMBERS:**

- UM-NSU CARD: 305-243-6300
- ZVI Broward: 305-243-6300
- Broward Children's Center: 305-243-6300
- Autism Society of Florida: 305-243-6300
- Autism Navigator: 305-243-6300

UM-NSU CARD: 305-243-6300



## Myths

Presented common misconceptions of Autism

## Diagnosis of Autism

Provided services to utilize in diagnosis of Autism

## Services After Diagnosis

Recommended organizations to aid in post diagnosis

## Important Notice

Elaborated on reasons to get tested



# Analysis

01

## Research

- Multiple articles
- Variety of keywords
- Results were either state or very localized

02

## Survey

- Provided useful data
- Setback in approval process
- Delayed responses

03

## Infographic

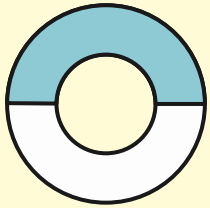
- Prior research aided
- Multiple revisions
- Support group assistance

04

## Video

- Proposed health literacy intervention
- Would be more personal
- Work in tandem to the infographic

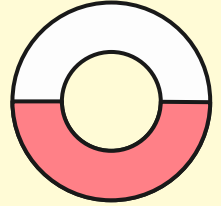
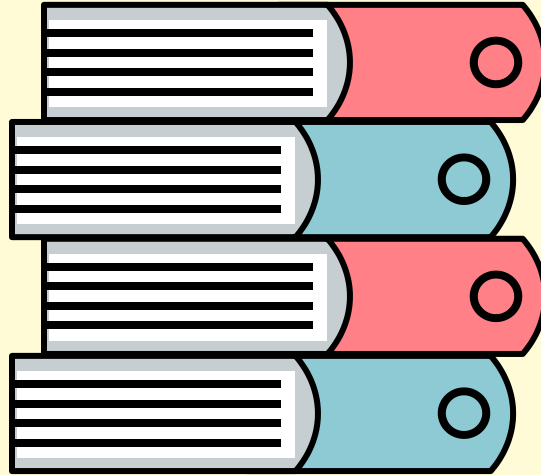
# Review



**Parents**

They serve as the precursor to the diagnosis

**50%**



**Physicians**

They serve to provide diagnosis

**50%**

# Limitations

## Knowledge

The IRB exemption process was new

## Time

Despite creating a timeline for this project, there wasn't enough time for everything.

01

02

03

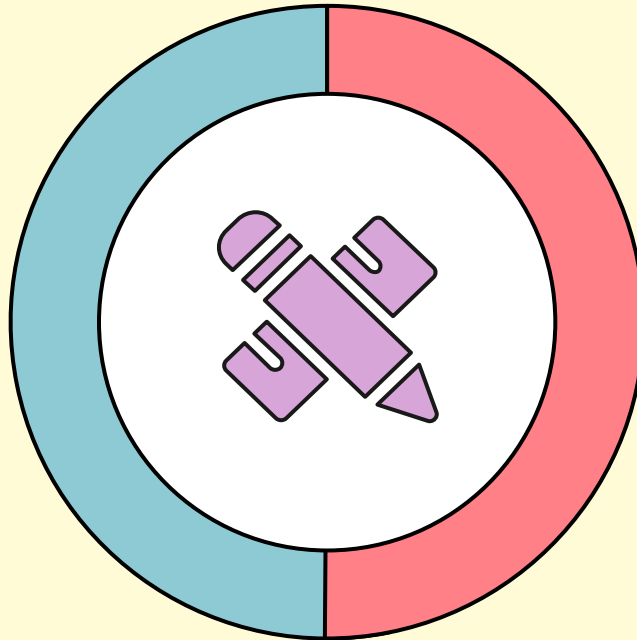
## Responses

No incentive to fill out the survey, leading to less survey responses

# Future Direction

## Honors Thesis

Overcome the issue of time and implement new changes to the overall procedure



## Second Half

I want to encourage health care practitioners to be more culturally sensitive

# APA Citations

1.



Constantino, J. N., Abbacchi, A. M., Saulnier, C., Klaiman, C., Mandell, D. S., Zhang, Y., Hawks, Z., Bates, J., Klin, A., Shattuck, P., Molholm, S., Fitzgerald, R., Roux, A., Lowe, J. K., & Geschwind, D. H. (2020). Timing of the Diagnosis of Autism in African American Children. *Pediatrics*, 146(3), e20193629. <https://doi.org/10.1542/peds.2019-3629>

2.



Guevara, J. P., Gerdes, M., Localio, R., Huang, Y. V., Pinto-Martin, J., Minkovitz, C. S., Hsu, D., Kyriakou, L., Baglivo, S., Kavanagh, J., & Pati, S. (2013). Effectiveness of developmental screening in an urban setting. *Pediatrics*, 131(1), 30-37. <https://doi.org/10.1542/peds.2012-0765>

3.

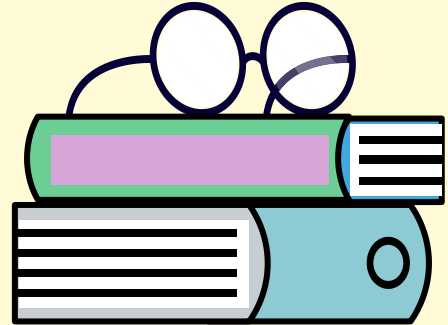


Park, H. R., Lee, J. M., Moon, H. E., Lee, D. S., Kim, B. N., Kim, J., Kim, D. G., & Paek, S. H. (2016). A Short Review on the Current Understanding of Autism Spectrum Disorders. *Experimental neurobiology*, 25(1), 1-13  
<https://doi.org/10.5607/en.2016.25.1.1>

4.



Smith, K. A., Gehricke, J. G., Iadarola, S., Wolfe, A., & Kuhlthau, K. A. (2020). Disparities in Service Use Among Children With Autism: A Systematic Review. *Pediatrics*, 145(Suppl 1), S35-S46.  
<https://doi.org/10.1542/peds.2019-1895G>



# Acknowledgements

## UM-NSU Card

Primary field site and a wonderful organization that is dedicated to their cause

01

## Field Supervisors

Thank you Mx. Williams and Ms. Zangari for teaching and guiding me through this project

02

## Slides

-Slidego  
-Freepik

03



Questions?

