

CREST - Protein Modeling Internship



Dr. Schmitt



NSU Florida

Lyla Abbas



NSU Florida

Dr. Sikora



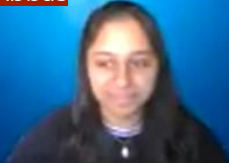
NSU Florida

Pujita Julakanti



NSU Florida

Feza Abbas



NSU Florida

Sanjana Likki



NSU Florida

Matthew Hunt



NSU Florida

Carol Manikkuttiyal



Christo Manikkuttiyal



NSU Florida

Carolina Alzamora



NSU Florida

2020 - 2021 Team



CREST Program

- Connecting Researchers, Educators, and Students was part of the Center for Biomolecular Modeling and aimed to engage undergraduates in protein modeling
- We were one of 8 teams around the country that would meet to share our projects and learn from each other
- We delivered both poster and oral presentations at multiple conferences including ASBMB, ACS, PDB50, and the USS at NSU



Phase 1: Modeling Projects

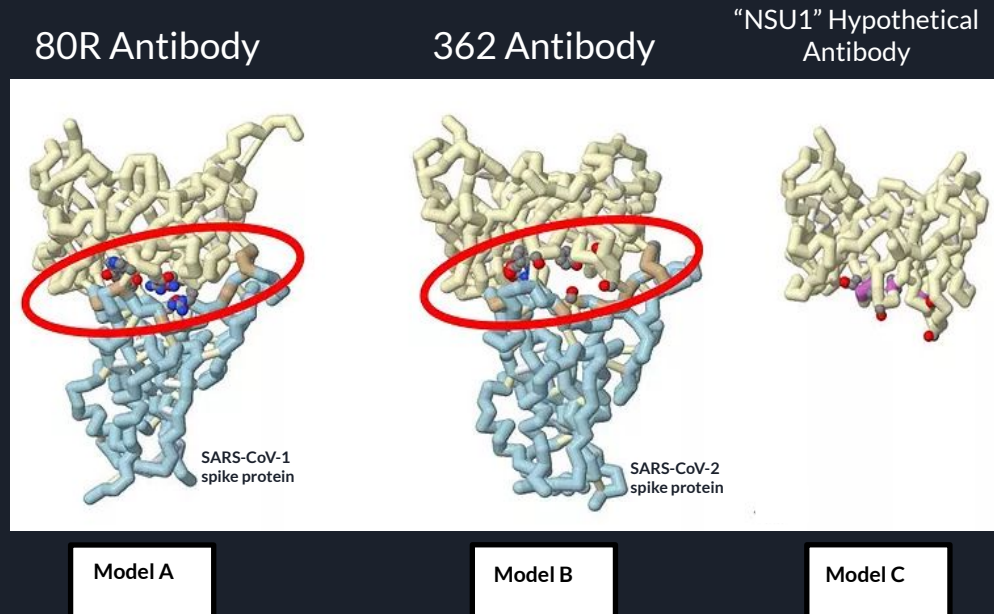
Phase 2: CREST Conversations

Phase 3: Faculty Collaborations

Our Research

Goal: to predict a more universally effective antibody against SARS-CoV1 and SARS-CoV2 and future variations

- We used Jmol and PyMOL to model the spike proteins and their existing corresponding antibodies
- Using the trends identified in the binding domains of the antibodies, we proposed changes to amino acid residues to make a universal antibody
- We coded the amino acid changes and modeled our new antibody





What We Learned

- How to work in a team setting , collaborate with renowned researchers directly working in the field of protein structure and function, and network with other CREST teams involved in protein modeling
- How to effectively present our findings at conferences including ASBMB, PDB50, USS, and ACS
- How to formulate an abstract, methods, results, diagrams, and a discussion as well as create in-depth posters and presentations
- How to visually represent molecular processes (through Jmol and Pymol) which allowed for a hands-on learning experience for biological, biochemical, and other related classes

How we got this opportunity:

- After taking my first BIOL1500 class, I found a passion for the intermolecular connection in amino acids and proteins
- Approached faculty on advice on protein modeling
 - Provided insight on their research interests
- Contacted upperclassmen, faculty, and other students who had done research in the past
- Showed interest early on and was offered a position on the team
- ASBMB Club
- Events that promote undergraduate research
- Determine your interest + select a professor

