

7-1997

Programs for Higher Education Catalog 1997-1998

Nova Southeastern University

Follow this and additional works at: https://nsuworks.nova.edu/abe_pgcoursecatalogs

 Part of the [Education Commons](#)

NSUWorks Citation

Nova Southeastern University, "Programs for Higher Education Catalog 1997-1998" (1997). *Fischler Postgraduate Course Catalogs*. 70. https://nsuworks.nova.edu/abe_pgcoursecatalogs/70

This Course Catalog is brought to you for free and open access by the NSU Course Catalogs and Course Descriptions at NSUWorks. It has been accepted for inclusion in Fischler Postgraduate Course Catalogs by an authorized administrator of NSUWorks. For more information, please contact nsuworks@nova.edu.

Fischler Center
for the
Advancement
of Education

Programs For Higher Education

Ed.D. Specializations in:

Adult Education

Computing and
Information Technology

Health Care Education

Higher Education

Vocational, Technical,
Occupational Education



CATALOG 1997-1998

Includes Application
and Admission Forms

STATE DISCLOSURES

CALIFORNIA

"Any questions or problems concerning this institution which have not been satisfactorily answered or resolved by the institution should be directed to the Council for Private Postsecondary and Vocational Education, 1027 Tenth Street, Fourth Floor, Sacramento, California 95814 (916) 445-3427."

INDIANA

"This institution is regulated by: The Indiana Commission on Proprietary Education, 302 West Washington Street, Room 201, Indianapolis, Indiana 46204. In-State Toll Free Number 800-227-5695 or (317) 232-1320."

SOUTH CAROLINA

"Nova Southeastern University is Licensed by the Commission on Higher Education, 1333 Main Street, Suite 200, Columbia, South Carolina 29201. Telephone (803) 737-2260."

WASHINGTON

Nova Southeastern University, Inc., is authorized by the Washington Higher Education Coordinating Board and meets the requirements and minimum educational standards established for degree-granting institutions under the Degree Authorization Act. This authorization is valid until August 24, 1999, and authorizes Nova Southeastern University, Inc., to offer the following degree programs: Ed.D. in Child and Youth Studies, Doctorate in Business Administration, and Master of Business Administration. Any person desiring information about the requirements of the act or the applicability of those requirements to the institution may contact the Board office at P.O. Box 43430, Olympia, Washington 98504-3430.

MEETING FACILITIES

Nova Southeastern University leases classroom facilities in accordance with local, health, fire, and safety standards. All facilities are selected on the basis of their conduciveness to learning. The University attempts to rent classrooms on local college campuses before using other facilities.

Programs For Higher Education

CATALOG 1997-1998

Policies and programs set forth in this catalog are effective through June 30, 1998. Regulations and requirements, including fees, are necessarily subject to change without notice at any time at the discretion of the Nova Southeastern University administration.

The University recognizes that individual programs require different time limits for the completion of academic studies leading to a degree. Therefore, the time frame is a matter within the discretion of each academic program. All program/center catalogs, bulletins, and handbooks carry this information.

Nova Southeastern University is accredited by the Commission on Colleges of the Southern Association of Colleges and Schools (1866 Southern Lane, Decatur, Georgia 30033-4097; Telephone number 404-679-4501) to award bachelor's, master's, educational specialist, and doctoral degrees.

Published July 1997



This catalog provides the framework for your program. Please become familiar with the policies and procedures listed within. Failure to read this catalog does not excuse students from the rules and procedures contained in it. Personal factors, illness, and contradictory advice from any source are not acceptable reasons for seeking exemption from the contents of this catalog.

PRESIDENT'S MESSAGE



Ovid C. Lewis, J.S.D.
President, Nova Southeastern University

Nova Southeastern University is committed to providing an educational environment that encourages students to be the best they can be. Historically, NSU has provided quality education through a diverse array of delivery systems ranging from the traditional to state-of-the-art technologies. Consistent with our mission statement, we prepare students for leadership roles in the professions and provide support for research and community service while maintaining an environment fostering creativity and innovation. We recognize that as Will Rogers once noted, "Even if you're on the right track, if you just sit there you'll get run over."

Given our commitment to providing educational opportunities that prepare tomorrow's professionals to optimally serve their professions, clients, and society, it is essential that curricula be designed at each level to effectuate this mission. Tomorrow's professionals must possess not only the traditional attributes—expertise, ethical sensibilities, and commitment to furthering professional and societal values—but also the capacity to utilize contemporary technology, apply and appreciate relevant findings and approaches of other disciplines, and to operate in a culturally diverse milieu.

Nova Southeastern's goal is to maintain and enhance the array of professional schools and concomitant programs required to fulfill its mission.

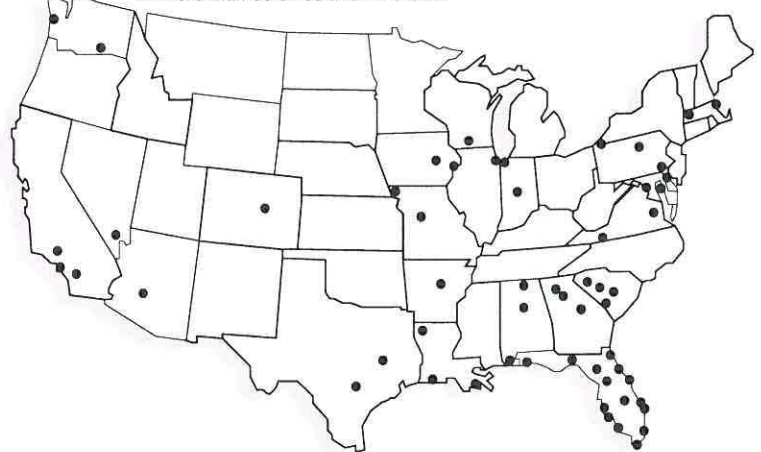
It must support, enhance, and expand existing professional centers and, where appropriate, reorganize University components to facilitate synergy and enhance the education of professionals. We believe that education is not merely a means to an end, but is itself intrinsically valuable. Accordingly, the time spent at Nova Southeastern by students, faculty, and staff should be informative, exciting, and rewarding.

We welcome you in joining in our common mission of creating the best possible educational setting.

THE MISSION

Nova Southeastern University is a dynamic, not-for-profit independent institution dedicated to providing high quality educational programs of distinction from preschool through the professional and doctoral levels, as well as service to the community. Nova Southeastern University prepares students for lifelong learning and leadership roles in business and the professions. It offers academic programs at times convenient to students, employing innovative delivery systems and rich learning resources on campus and at distant sites. The University fosters inquiry, research, and creative professional activity, by uniting faculty and students in acquiring and applying knowledge in clinical, community, and professional settings.

Nova Southeastern University is the only university that has a national education network already in place, with operating sites in more than 50 cities and 21 states.



THE UNIVERSITY

NOVA SOUTHEASTERN UNIVERSITY is an independent, nonsectarian, nonprofit university chartered by the state of Florida in 1964. It is located on a 232-acre Main Campus west of Fort Lauderdale at 3301 College Avenue in Davie, 10 miles inland from the Atlantic Ocean and easily accessible from major highways, including I-75, I-95, I-595, the Sawgrass Expressway, and Florida's Turnpike. Additional locations are in downtown Fort Lauderdale, Coral Springs, North Miami Beach, and Port Everglades. Its 15 centers of study offer campus-based undergraduate and graduate programs leading to degrees in education, law, psychology, oceanography, computer sciences, social sciences, business and public administration, osteopathic medicine, dental medicine, pharmacy, optometry, medical sciences, and allied health (physician assistant, occupational therapy, and physical therapy). As an acknowledged leader in field-based degree programs, Nova Southeastern offers courses of study leading to the bachelor's, master's, educational specialist, and doctoral degrees in education, business and public administration, psychology, health professions, and physical, social, and computer sciences.

The Family and School Center is a community resource that provides education and therapeutic services for families and their children. The center comprises three units: University School, the Ralph J. Baudhuin Oral School, and the Family Center Unit. University School is a demonstration school serving children from preschool through high school, preparing them in the upper grades for college. The Baudhuin School provides programs for children with specific learning needs, and/or hearing disabilities. The Family Center Unit provides a spectrum of family related programs designed to promote positive interaction between parents and children.

From the beginning, the University has distinguished itself by its innovative outlook, unique programs that provide both traditional and nontraditional choices in educational programs, and research in many fields aimed at solving the problems of immediate concern to mankind.

The University's centers and programs share a common mission—to educate students for leadership roles in a variety of professions, such as law, education, psychology, osteopathic medicine, optometry, dentistry, pharmacy, allied health, business and public administration, oceanography, and computer and information science. In the Nova Southeastern University educational continuum, preprofessional training begins as early as University School, continues through the college level, and culminates in the various centers for professional studies. Through the Nova Southeastern University Educational Plan, students master appropriate skills and disciplines at each academic level, develop a sense of professional ethics and responsibility, and learn to appreciate the role of the professional as a key individual in society.

"The University's Educational Plan" stresses the critical relationship between theory and practice; it reinforces and tests the classroom experience through applied research and community service as integral parts of academic experience. Consistent with its mission, the University extends its resources to provide educational opportunities to working professionals nationwide, with faculty teaching at corporate and other locations across the country. Nova Southeastern also delivers programs through a variety of educational technologies, including telecommunications. Nova Southeastern University is committed to the idea that education should not be timebound or placebound. Through its educational offerings, research projects, and programs of public service, the University encourages the free exchange of ideas and the search for knowledge that is the cornerstone of the academic tradition.

EDUCATION PROVOST'S MESSAGE



*H. Wells Singleton, Ph.D.
Education Provost, Fischler Center
for the Advancement of Education*

Many universities are just becoming aware that working adult professionals differ in many ways from the more traditional young learner. Yet as education evolves, there is great demand for quality higher education programs that can meet the needs of these working professionals without disrupting their work or personal lives.

Nova Southeastern University's Program for Higher Education (PHE) is the foremost such program in the country in terms of size, experience and quality. Begun more than 25 years ago on an innovative distance-learning model, PHE now offers specializations in adult education, higher education, computing and information technology, health care education, and vocational, technical and occupational education.

As education has changed, PHE's leadership has adjusted the program offerings to remain abreast. This flexibility has become a hallmark of Nova Southeastern University and the Fischler Center for the Advancement of Education. Yet the basic principles of adult learning on which the programs are based have continued in all of the program's elements. These principles include self-motivation, self-study matched with intensive seminars, integrity, and a commitment to quality.

We at the Fischler Center are intensely aware of the need for more and more emphasis on leadership development and the lifelong learning concept — and we are moving rapidly to lead the way locally, nationally and internationally. We are embarking on innovative new partnerships, programs that “stretch the envelope,” a major international thrust, and much more. And, working from a newly renovated 250,000 square foot campus, we have launched initiatives that will tie our programs together with the world.

If you find your personal goals and learning styles are consistent with the directions PHE and the Fischler Center for the Advancement of Education are going, I encourage you to consider applying to the Program. Good luck with your career and your graduate studies.

THE FISCHLER CENTER FOR THE ADVANCEMENT OF EDUCATION

Mission Statement

The Fischler Center for the Advancement of Education is dedicated to the training and continuing support of teachers, administrators, trainers, and others working in education and related helping professions. These practitioners serve as the bridge between the knowledge base in education and the quality of education of their students. The Center hopes to fulfill its commitment to the advancement of education by serving as a resource for practitioners and by supporting them in their self-development.

In accomplishing its mission, the Center offers educational programs designed to meet the needs of the practitioner and makes a special commitment to provide educational programs in those geographic areas in which there are few resources for the training and professional support of practitioners.

Because of its commitment to the working professional, the Center offers alternative delivery systems for education that are adaptable to practitioners' work schedules and locations. Center programs reflect and anticipate the needs of practitioners to become more effective in their current positions, to fill emerging roles in the education field, and to be ready to accept changing responsibilities within their own organizations. The Center also aids professional educators in achieving personal goals, including certification requirements.

Overview of the Fischler Center for the Advancement of Education Programs

Graduate Teacher Education Program offering:

- Various Majors in Teaching (M.S. and Ed.S.)
- Modified Core Program in Educational Leadership (M.S. and Ed.S.)
- Initial Certification (M.S.)
- Nondegree Endorsement and Certification Renewal Options

Life Span Care and Administration offering:

- Applied Addiction Studies (M.S.)
- Child and Youth Care Administration (M.S.)
- Early Childhood Education Administration (M.S.)
- Elder Care Administration (M.S.)
- Family Support Studies (M.S.)

National Ed.D. Program for Educational Leaders offering:

- Educational Leadership (Ed.D.)

Programs for Higher Education offering:

- Adult Education (Ed.D.)
- Computing and Information Technology (Ed.D.)
- Health Care Education (Ed.D.)
- Higher Education (Ed.D.)
- Vocational, Technical, Occupational Education (Ed.D.)

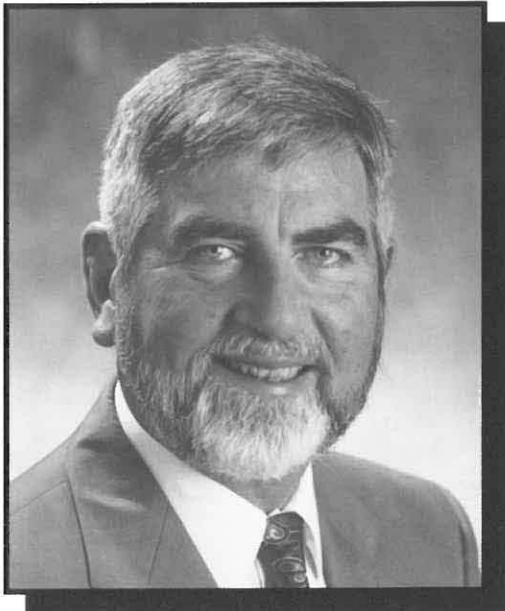
Programs in Communication Sciences and Disorders offering:

- Audiology (Au.D.)
- Speech-Language Pathology (M.S. and SLP.D.)

Programs in Education and Technology offering:

- Instructional Technology and Distance Education (M.S. and Ed.D.)
- Child and Youth Studies (Ed.D.)

PROGRAM DEAN'S MESSAGE



Ross E. Moreton, Ed.D.
Program Dean, Programs for Higher Education

This field-based doctor of education program at Nova Southeastern University is committed to providing quality education to professional educators and trainers. Throughout the past 25 years, the Programs for Higher Education (PHE) have demonstrated that an academic environment and the workplace are elements of a coherent whole. The world of theory is incomplete without the world of work, and vice versa. The study areas (seminars) and the problem-solving projects (practicums and major applied research project) required in the Programs for Higher Education support the University's goal to improve education and training activities in society by further developing the professionals who work in those settings.

Nova Southeastern University has more than 14,000 students and more than 1,600 administrators, faculty, and staff. When accepted into the Programs for Higher Education, you will join individuals studying in Florida, in more than 20 other states across the nation, and in several foreign countries who share your commitment to improve adult education; computing and information technology; health care education; higher education; and vocational, technical, occupational education.

At the 1997 Summer Institute, PHE will celebrate 25 years of delivering quality doctoral education and views with eagerness the next quarter century of service dedicated to educating and training professionals. The Institute is designed to remember and celebrate the past accomplishments; however, the real excitement comes from anticipating the opportunities the program will provide for future professionals.

If you are eligible for admission to this outstanding program, I encourage you to enroll and become part of an international network that includes students, graduates, faculty, and staff dedicated to helping you earn your Ed.D. while you solve problems related to your institution/organization.

PROGRAM FACULTY AND STAFF



EMMALINA ALEXANDER
Receptionist and Learning
Material Specialist



ADA CHRISTIE
Coordinator of Administrative
Operations



CAROLYN S. COHEN
Secretary



BARBARA A. CROMARTIE
Administrative Assistant
to the Faculty



DORIE E. DORST
Administrative Secretary



EILEEN E. FISHER
Secretary



NORMA M. GOONEN, Ed.D.
Associate Director for Faculty
and Curriculum Development



STAN A. HANNAH, Ph.D.
Program Professor, Computing
and Information Technology



LINDA M. HOWARD, Ed.D.
Program Professor, Adult
Education



MARILYN A. KRISS
Administrative Assistant to the
Program Dean



RONALD C. KROLL, Ed.D.
Associate Director for Cluster
Support and Student Services



ANNE E. MULDER, Ph.D.
Program Professor, Higher
Education



JOAN B. MURRY, Ph.D.
Program Professor, Higher
Education



JOANNE L. NANCE
Registration and Tuition
Payments Specialist



MARTIN B. PARKS, Ph.D.
Associate Director for Research



MARJORIE C. ROWLAND
Administrative Secretary



DELORES M. SMILEY, Ed.D.
Associate Director for Cluster
Development and Marketing



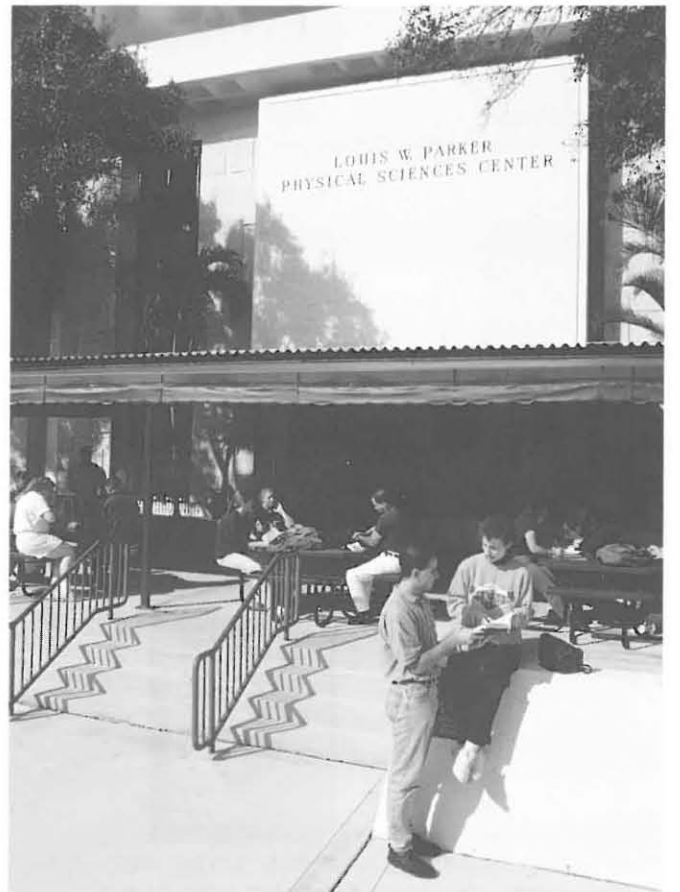
PHILIP S. THOMAS
Secretary to the Faculty



LESLIE K. TORRES
Students' Records and
Faculty Payment Specialist



TANYA M. WALKER
Administrative Assistant for
Online and Database Information



CONTENTS

PROGRAM DESCRIPTION	1
VISION, MISSION, AND OUTCOMES	1
PROGRAM COMPONENTS	3
Seminar Descriptions	3
CORE SEMINARS	3
SPECIALIZATION SEMINARS	4
CONCENTRATION OPTION	6
PRACTICUMS	7
SUMMER INSTITUTES	8
COMPREHENSIVE EXAMINATION	8
MAJOR APPLIED RESEARCH PROJECT	8
CALENDAR	9
Sample Schedule	9
CLUSTERS	10
Local Clusters	10
International Cluster	10
How the International Cluster Works	11
DOCTORAL CANDIDACY POLICY	11
GRADUATION REQUIREMENTS	12
ADMISSIONS	12
International Students Admission	13
Specialization Admission	13
International Students	14
Admissions Portfolio	15
Transfer Credit	15
GRADING SYSTEM	16
Seminars	16
Practicums	16
Comprehensive Exams	16
MARPs	16
General Policies on Grades	17
STUDENT STATUS	17
Withdrawal	17
Reinstatement	18
FINANCIAL INFORMATION	18
Tuition and Fees	18
Tuition Refund Policy	19
Financial Aid	19
Veterans' Benefits	20
Program Services	20
GRADUATE ADMINISTRATIVE FELLOWSHIPS	21
ATTENDANCE	21
Seminar Attendance	21
Summer Institute Attendance	21
COURSE NUMBERS AND TITLES	23
PRACTICUM NUMBERS AND TITLES	25
SUMMER INSTITUTE NUMBERS AND TITLES	25
COMPREHENSIVE EXAMINATION NUMBER AND TITLE	25
MAJOR APPLIED RESEARCH PROJECT NUMBERS AND TITLES	26
PROGRAMS FOR HIGHER EDUCATION FACULTY	27
OPERATING CLUSTERS ACCEPTING APPLICATIONS	35
CLUSTER SITES AND CONTACT PERSONS	36
ORGANIZATIONAL CHART	38
LEARNING RESOURCES	39
POLICIES GOVERNING STUDENT RELATIONS	42
Notice of Nondiscrimination	42
THE CODE OF STUDENT CONDUCT AND ACADEMIC RESPONSIBILITY	43
CENTER FACULTY AND ADMINISTRATIVE STAFF	48
NOVA SOUTHEASTERN UNIVERSITY BOARD OF TRUSTEES AND ADMINISTRATION	54
NOVA SOUTHEASTERN UNIVERSITY DEGREE OFFERINGS	55
PROVISIONS	56
APPLICATION AND ADMISSION PACKET	57



PROGRAM DESCRIPTION

The Programs for Higher Education (PHE) at Nova Southeastern University provides a field-based doctor of education (Ed.D.) degree to practitioners working in the fields of adult education; computing and information technology; health care education; higher education; or vocational, technical, occupational education. The program provides regionally accredited degree opportunities for educational practitioners who are seeking its advantages. It capitalizes on the field-based delivery system to combine formal instruction, supervised study, and applied research in an integrated program of study.

Each of the specializations offered by PHE embodies a commitment to provide quality education. This commitment stems from the goal to improve skills related to rational decision making in educational programs and systems. The overall goal of the program is to make a positive impact on education by influencing those responsible for its administration and delivery. The field-based delivery system was developed as the most appropriate means for offering the specializations. The field-based delivery system is designed for practitioners who are employed in positions related to one of the areas of specialization. The most salient aspect of the field-based approach is that it does not force, for an extended period of time, the removal of practitioners from the positions and responsibilities for which they are seeking advanced preparation. On the contrary, the field-based approach allows for the integration of study and practice while the student remains employed.

The students, who are steeped in the day-to-day problems, issues, and conditions of education, use their knowledge and experience to examine critically the “real world” efficacy of theory presented to them through formal instruction and supervised study. Because of their status as practitioners, they have the opportunity and are required to submit to the test of reality in newly acquired knowledge and competencies through direct application within their own institutions or organizations.

The significance of this structured intermingling of study and practice is summed up in the following point: in most traditional programs, the ability to perform as a practitioner is assumed to be a consequence of earning the degree. For the doctor of education degree offered by PHE, it is a condition for earning the degree.

VISION, MISSION, AND OUTCOMES

PHE Vision Statement. Programs for Higher Education (PHE) at Nova Southeastern University is dedicated to sustaining excellence in field-based graduate professional education. Faculty and graduates of PHE serve as agents of constructive change and as leaders in conceiving, developing, implementing, and evaluating diverse interdisciplinary strategies to advance professional practice in education and training.

PHE Mission Statement. Programs for Higher Education (PHE) provides applied doctoral and continuing professional development programs in education to practitioners in the international community engaged in education or training. PHE, distinguished by accessibility for its learners, flexibility in programs and operation, creativity and experimentation in outlook, and diversity among learners and faculty, promotes academic standards of quality consistent with excellence in professional practice.

Nova Southeastern University has a 232-acre Main Campus with 37 buildings, an East Campus, and the Fischler Center for the Advancement of Education's 250,000-square-foot North Miami Beach Campus.

PHE effects a positive impact on educational practice by influencing the personal and professional development of practitioners in adult education, computer and information technology education, health care education, higher education, and workforce education and training. Through its field-based and distance delivery approaches, PHE fosters the integration of scholarly reflection with applied research while the student remains actively engaged in professional practice.

PHE Student Outcomes. The PHE student should demonstrate success in fulfilling requirements for the doctoral degree in education (Ed.D.) by:

1. acknowledging, understanding, and utilizing effectively the PHE field-based, independent distance learning delivery system and its assumptions, limitations, and responsibilities;
2. learning to investigate the literature of postsecondary education and the field of specialization, and be able to relate it to current and future trends and issues and problems and processes in an education or training context in an organization;
3. developing applied research and writing skills required in seminar, practicum, and MARP processes; and

4. demonstrating, in course work and the comprehensive exam, the ability to conceptualize, organize, analyze, synthesize, and use judgment to address assignments, issues, problems, cases, or situations drawing upon a foundation of knowledge and perspective.

PHE Graduate Outcomes. The PHE graduate should:

1. be articulate and able to communicate effectively, with skills in listening, speaking, and writing;
2. be an informed professional about the postsecondary/higher education enterprise and in the chosen field of specialization;
3. utilize alternative approaches while acting as a "change-agent" in seeking to address and solve problems and issues in his or her organization; and
4. exhibit progressively developed and demonstrated performance.



PROGRAM COMPONENTS

The Programs for Higher Education (PHE) of the Fischler Center for the Advancement of Education offers a doctoral degree in Education (Ed.D.). To earn the doctorate, students must successfully complete eight (six core, two specialization) seminars, four practicums (papers applying program principles to the students' work setting), attend two weeklong summer institutes, complete a comprehensive examination, as well as a major applied research project (MARP). This program is designed so that it may be completed in three years, while the student remains fully employed.

Seminar Descriptions

Students must attend and pass eight seminars. Six of these are "core" seminars and are required of all students regardless of specialization. Each specialization offers two seminars which are taken only by those enrolled for that specialization. Core seminars are offered at local cluster sites and on campus. The in-class portions of the specialization seminars are held in conjunction with the summer institutes. Instruction is provided by educators with doctorates from accredited institutions throughout the country who have been selected as national lecturers on the basis of their subject expertise, teaching ability, reputation, and commitment to helping graduate adult learners achieve their educational goals. This is a primary factor in giving the program its national perspective and gives students direct exposure to a wide range of scholars and practitioners.

CORE SEMINARS

Each core seminar carries three semester hours of graduate credit which are described below.

Curriculum and Program Planning (ECD 8003)

This seminar is designed to familiarize the student with the various theories, principles, and practices related to curriculum and program planning. It includes the study of curricular and instructional design foundations; instructional design models; learning theory; the implementation, management, and evaluation of instruction; and a consideration of significant issues and trends.

Governance and Management (ECD 8007)

This seminar emphasizes the common and unique characteristics of organizations, various approaches and practices of governing and managing, and the theories and research relevant to organizational management and development. The learner will explore organizational missions, values, and purposes; governance structures; management styles and organizational processes; and current issues and trends in the field, including strategic planning, quality control and institutional effectiveness, and organizational change.

Human Resources Development (ECD 8008)

The HRD seminar discusses the role of human resources within organizations. The course examines ways in which HRD can be used to develop the most valuable asset possessed by any organization: the highly skilled and educated knowledge worker. Theory, research, and practice are combined within the course so that students can gain an understanding of how HRD can be used to improve organizational performance. Students will be introduced to the key tools used by HRD practitioners such as: (a) needs assessment, (b) design of HRD interventions, (c) implementation of action plans, and (d) the evaluation of HRD programs.

Over the last 10 years, Nova Southeastern University's total enrollment doubled from approximately 7,500 to 15,500 and full-time faculty increased four-fold.

Leadership (ECD 8009)

This seminar examines the significant research and theory that provide the conceptual framework to both view and practice leadership as a collective enterprise. The seminar is designed to empower emerging leaders through learner-designated leadership development action plans (LDAPs), which incorporate new organizational paradigms, transactional and transformational leadership strategies, and resource analysis and development. LDAPs will reflect learner analysis and synthesis of such leader-related skills as communicating a vision and goals, inspiring and motivating others, embracing and nurturing diversity, building and facilitating teams and coalitions, processing and analyzing information, anticipating and incorporating alternative futures, assessing and assuring quality in processes and outcomes, and stimulating and stabilizing change.

Research Methodology (ECD 8013)

This seminar is designed to assist the learners in gaining the skills for identifying, analyzing, and solving institutional and agency problems related to their place of employment. Emphasis is placed on the application of the three problem-solving methodologies—research, evaluation, and development. The learner is provided with tools to design and critically analyze research studies. The learner will also be exposed to concepts related to research design, internal and external validity of research designs, sample selection, reliability and validity of instruments designed for data collection, concepts of descriptive and inferential statistics, and the use of computer software packages for statistical analysis.

Societal Factors Affecting Education (ECD 8021)

This seminar explores the interdependent forces in society that affect lifelong education. The seminar approach includes doing environmental scanning and identifying the various societal factors or forces external to education that can or do influence the institution of education, the process of education, and lifelong learning. The course of study includes a focus on (a) the societal

and social context (past, present, and future); (b) social and societal trends and their potential impact on education; and (c) planning for the future. Some of the key concepts explored and how these factors affect education include economics, control (government, the courts, constituencies, etc.), technological and social demographics (including race, gender, age, poverty, etc.), and competition. Planning for the future, forecasting, theories of change, and change agency are also important aspects of the course content.

SPECIALIZATION SEMINARS

Students complete the two specialization seminars appropriate to their chosen specialization. Again, three semester hours of graduate credit are awarded for successful completion of each seminar.

ADULT EDUCATION

History, Philosophy, and Practices of Adult Education (EAD 8003)

This seminar provides a foundation for the field of adult education based on the historical context and philosophical constructs that have informed the practice of adult educators for over 75 years. The seminar also provides opportunities to participate in adult learning activities linking theory and practice. It is designed to take advantage of the participants' experience educating and training adults from a wide variety of settings and of their expertise as adult learners. The goals of the seminar include learning the development of adult education as a social movement in a historical context, increasing the understanding of adult education within a philosophical framework, exploring the scope of the field of operations of adult education as it is practiced in the United States, and integrating the scholarly knowledge (the history, philosophy, and practices of adult education) with the learners' knowledge of their own professional and personal experiences. A final goal encourages the participants to enhance their ability to function as a lifelong learner.

Based on 1995 figures, Nova Southeastern University is the 15th largest private institution of higher education in the country.

Theory and Methods of Adult Education (EAD 8007)

The purpose of this seminar is to help students accomplish three broad objectives: to understand adult development throughout the life span and its relationship to adult learning; to become aware of the research and knowledge base regarding adult learning; and to develop an understanding of the role of the "teacher" in adult education and become skillful in the selection and use of appropriate methods, techniques, and materials for achieving particular learning objectives.

COMPUTING AND INFORMATION TECHNOLOGY

Database Management Systems (EID 7370)

This seminar focuses on the changing strategic role of digital information systems. Within the past decade it has become apparent that the old model of centralized data processing can no longer meet organizational needs. Today's organizations now demand that their information systems have the flexibility and capability needed to thrive in a constantly changing client/server environment. The purpose of this course is not to produce full-fledged database design specialists; rather, the aim is to provide educators with a basic understanding of this complex field so that they can (a) make sensible decisions about how this new technology can be used to improve educational practices, and (b) make informed decisions as administrators about the selection and utilization of information technology. Major topics in this course include: (a) relational database fundamentals, (b) client/server architecture, (c) re-engineering organizational processes, (d) project management, and (e) designing Web sites.

Computer Information Networks (EID 7390)

This seminar focuses on the latest advances in the expanding field of computer networks and their impact on information systems applications. Communications principles and techniques of information acquisition, storage, retrieval, transfer, reception, and security are presented.

Computer communications and the design of distributed systems are examined. Topics covered include voice, image, and data transmission; radio and satellite networks; the Integrated Services Digital Network (ISDN); electronic data interchange (EDI); protocols and software; network management; network security and control; inter-networking; and LANs, MANs, and WANs.

HEALTH CARE EDUCATION

Concept and Values in Health Care Education (HCE 8002)

This seminar enables the health care education practitioner to understand, consider, and place in context the critical concepts and systems which impact the provision of health care and, hence, the education and training of care providers. Value-laden concepts such as disease, illness, handicap, chronicity, cure and care that impact our thinking in all areas of health care, are examined. The social and professional systems that structure the provision of care are analyzed. Issues of social justice, managed care, professionalism, technology and the goals of health care will be discussed from a social, ethical, and legal perspective. Mechanisms fostering quality of care, both at the macro-level (e.g., the Joint Commission on the Accreditation of Hospital Organizations) and at the micro-level (e.g., Healthcare Ethics Committees and Institutional Review Boards) are assessed. Finally, educational models and resources in the area of philosophy of health care and biosocial ethics are reviewed.

Preparing and Developing Staff in the Health Care Professions of the Future: A Changing Education Paradigm (HCE 8003)

This seminar is based on the assumption that an educated, trained, and motivated staff is the most important asset in the health care organization of the future. To that end, the seminar will cover the changing roles of health care educators as facilitators, innovators, leaders, consultants, and instructional designers. Besides developing a multiskilled and flexible workforce, lifelong learning and adult education principles form a foundation for consideration of technologically based educational delivery systems and career and professional development patterns.

NSU is among the 25 largest universities in the country in number of students enrolled in post-baccalaureate programs.

The University awards bachelor's, master's, educational specialist, doctoral, and first-professional degrees in fields ranging from education to business, counseling to computer and information sciences, medicine to law, and other fields.

Implications for education and training caused by operational restructuring of health care organizations and patient care delivery are studied. The relationship of continuous quality improvement (CQI) to education and training is explored.

HIGHER EDUCATION

Politics, Law, and Economics of Higher Education (EHD 8002)

This seminar places leadership roles and policy decision making in current and emerging contexts of political, legal, and economic factors affecting postsecondary education. The seminar applies the techniques and theories of the three perspectives to the study of educational policy making and analysis. Local, state, and federal political systems are examined, and the role each plays in higher education is identified and analyzed.

Emergence of Higher Education in America (EHD 8006)

The areas of study in this seminar are the historical and philosophical roots of higher education: European contributions to the ideas of the American college, the evolution and diversification of American higher education, the dynamic pattern of higher education in the late 20th century, and examination of the future of American higher education with appropriate emphasis on its various components.

VOCATIONAL, TECHNICAL, OCCUPATIONAL EDUCATION

Emergence of Vocational, Technical, and Occupational Education in America (ETD) 8006)

This seminar covers the historical development of vocational-technical education in western societies, including the social, political, and economic forces critical to the evolving nature of education for work. Also studied are the roles of the economy, business, industry, and government in the creation of opportunities and applications for applied technology education.

Trends and Issues in Vocational, Technical, and Occupational Education (ETD 8008)

This seminar explores the major sociological, economic, educational, legislative, and political issues and trends expected to have continuing impact on vocational-technical education. The current status and philosophies of vocational-technical education are discussed relative to these trends and issues. Seminar content reflects the dynamic changes occurring in our society. Articulation between secondary and postsecondary education, business and industry partnerships, and vocational legislation and world labor market manpower are a few of the topics examined.

CONCENTRATION OPTION

Programs for Higher Education offers students the opportunity to elect a concentration within their specialization. The concentration enables students to demonstrate to employers and colleagues that they have undergone a rigorous doctoral program, in depth as well as breadth. The following is a partial list of approved concentration options:

- Academic Administration
- Allied Health Education
- Bioethics
- Computer Studies
- Criminal Justice
- Curriculum and Instruction
- Educational Technology
- English as a Foreign Language
- Ethics
- Finance
- General Institutional Administration
- Global Studies
- Hospitality Management
- Human Resources Development
- Institutional Development
- Library Administration
- Research and Evaluation
- Special Populations in VTO
- Student Affairs Administration
- Systems Analysis
- Training and Education

In addition, a student may apply to concentrate in an area not on the list and may do so with the approval of the PHE associate director for research.

Students interested in this option should request an application form from their cluster coordinator or the central office. Students are eligible to request concentrations if they have completed no more than one practicum and are able to relate the remainder of their practicums and the MARP to the "theme" of their concentrations. PHE will acknowledge and record in the students' records the choice of concentration. Students will express their chosen concentration by including statements that explain the relationship of these projects to that concentration in at least three of their practicum reports and in their major applied research project.

Each student is encouraged to select and seek the counsel of a qualified professional in his or her approved concentration field to serve as a mentor. The mentor assists the student in becoming familiar with the literature in the field and serves as the role model. The choice to seek a mentor or to select a particular one is entirely up to each student. The administration of the Programs for Higher Education will have no official role in this process.

After the MARP proposal is approved, each student is asked to do an individualized evaluation of PHE's effectiveness and its impact on the individual's professional growth organization. The student will be asked in this evaluation to include a statement about the concentration and its relationship to practicums and the MARP. These statements and the titles/abstracts of practicums and MARPs in question will be reviewed by the PHE associate director for research to determine whether the student has met the requirements for a concentration. If so, the director will certify the title for the concentration to the University's registrar, who will then record it on the student's transcript. If not, the student will be informed of the reasons and will be given the opportunity to appeal the decision.

PRACTICUMS

Students earn four semester hours of graduate credit for each practicum report approved. Practicums are applied research projects designed to promote the solution to current problems in the students' institutions. They are highly structured opportunities to put theory into practice and to submit newly gained knowledge and skills to the test of reality.

There are four practicums (proposals and reports) required in the PHE Ed.D. program. The requirements regarding practicum topics are as follows:

1. Each of the three methodologies (research, evaluation, and development) must be used in three separate practicums.
2. Any of the methodologies may be used in the fourth practicum.
3. Each of the four reports must indicate a relationship to concepts presented in one or more of the seminars.
 - a. One must utilize inferential statistics and be related to the Research Methodology seminar.
 - b. One must be related to at least one of the specialization seminars.
 - c. The other two can be related to any of the other six seminars.
4. If a concentration has been declared, the report must indicate the relationship of the study to the specific concentration.

Practicums promote the translation of theory into practice by requiring students to relate the theory of seminars to problems or projects in their institutions or organizations. The goal of the practicums is to provide experience in designing and conducting applied research projects. Students are assisted in this process by cluster coordinators, associate cluster coordinators, local research associates, and practicum evaluators.

Students, faculty and staff have access to University computing facilities from anywhere in the world and more than 500 desktop computers are in the Einstein Library's microcomputer lab for student use.

SUMMER INSTITUTES

Each student must attend two summer institutes (ECD 8060 and ECD 8061). Summer institutes are weeklong conferences that bring together students, cluster coordinators, associate cluster coordinators, local research associates, practicum evaluators, MARP advisors, national lecturers, central staff, and nationally known educators to express and share ideas. Material is presented that explores the deeper implications of the seminars and that elaborates on the application of theory to current issues in education. Both formal and informal activities provide ample opportunities for mutual teaching and learning among students and other educators from across the country. Many students find the summer institute to be one of the most stimulating and rewarding aspects of the program.

COMPREHENSIVE EXAMINATION

The comprehensive examination has several purposes:

- to provide an assessment of student growth and development in the program,
- to establish that individual students are ready to proceed to the final (MARP) stage, and
- to provide students an opportunity to demonstrate competency in attaining formal candidacy status.

Eligibility

Students are eligible for the comprehensive examination upon passing six seminars and three practicums. Successful completion of the comprehensive examination is a prerequisite to admission to candidacy status and the assignment of a MARP committee.

Description

The comprehensive examination is a four-hour written examination that demonstrates an individual's competence to address broadly significant issues in higher education based on a foundation of knowledge and perspective. The examination is administered once per term.

MAJOR APPLIED RESEARCH PROJECT

Students receive 21 semester hours of graduate credit for completing this project. The major applied research project, or MARP, is the capstone of doctoral study. MARPs utilize the processes of the practicums. Whereas practicums are designed to sharpen skills in planning and conducting applied research, the MARP is the final demonstration that those skills have been mastered. MARPs involve the application of research to actual problems and issues in education. The program stresses experiences that contribute to the professional improvement of the students, and the MARP year is the capstone of those experiences. Projects undertaken must be in the students' area of specialization and are based in the institutions or organizations in which students are employed.

Students receive seven semester hours of graduate credit for completion of the major applied research project proposal, a second seven semester hours of graduate credit for completion of the individualized evaluation and satisfactory progress on the project, and a final seven semester hours of graduate credit for completion of the major applied research project. (Credit for "satisfactory progress" will not be awarded until the fourth practicum report is approved.)

Students are guided and assisted throughout the MARP process by three-member MARP committees that consist of an advisor, a local committee member, and a central staff committee member. Students will be assigned to a MARP committee after completing the comprehensive examination and after seven seminars, three practicums, and the fourth practicum proposal have been satisfactorily passed.

Nova Southeastern University initiated its first distance education programs in 1972 and was the first university in the United States to offer graduate programs in an on-line format (in 1985).

CALENDAR

Nova Southeastern University does not conduct classes in observance of the following holidays: New Year's Day, Martin Luther King Day, Memorial Day, Independence Day, Labor Day, Rosh Hashanah, Yom Kippur, Thanksgiving weekend, and Christmas Day.

Students in local clusters normally take **one core seminar per term** for the first two years. They take one core seminar during the fall, winter, and spring terms, and a **specialization seminar** in conjunction with the summer institute during the summer term.

The calendar year of the Programs for Higher Education is divided into four terms:

TERM	BEGINS	ENDS
Fall	October 1	December 31
Winter	January 1	March 31
Spring	April 1	June 30
Summer	July 1	September 30

International Cluster students normally take **one core seminar during the winter term** and for two years attend a special summer session **prior to the institute to take two other core seminars**. (See Travel Options on page 11.) They also take the specialization seminar in conjunction with the summer institute.

By following the calendar described above, both local and international cluster students can complete all seminars during the first two years of enrollment. Most students also **work on practicum requirements** during this time.

The **Comprehensive Examination** is taken when all six core seminars have been successfully completed and at least three of the practicum reports are completed.

The **MARP process** is usually completed during the third year.

For local clusters, all seminar work takes place during the first two years of the program. One seminar in each of three terms per year is scheduled for these two years (see sample schedule below). The core seminars are scheduled for a minimum of three daylong sessions on Saturday. Orientation meetings and applied research workshops are held Friday night prior to the Saturday session. The specialization seminars are scheduled in conjunction with the summer institute. Thus, at the end of the first two years, each local cluster student should have completed the eight required seminars, made substantial progress on practicums, and taken the comprehensive exam.

SAMPLE SCHEDULE

First Year	Second Year	Third Year
Core Seminar (<i>Curriculum and Program Planning</i>)	Core Seminar (<i>Leadership</i>)	Major Applied Research Project
Core Seminar (<i>Human Resources Development</i>)	Practicum One Core Seminar (<i>Governance and Management</i>)	Practicum Three <i>Continue until completed</i>
Core Seminar (<i>Research Methodology</i>)	Practicum Two Core Seminar (<i>Societal Factors</i>)	Comprehensive Exam
Summer Institute and Specialization	Summer Institute and Specialization Practicum Four	

Typically, one seminar is taken per term. There are four, three-month terms per year. Please refer to the calendar above.

During the third year of the program, each local cluster student completes the practicum requirements and, if the comprehensive examination is passed, is assigned to a major applied research project committee.

International students should contact their cluster coordinator or the Programs for Higher Education for details regarding the International Cluster calendar.

CLUSTERS

In the Programs for Higher Education, all students are assigned to groups called clusters. Clusters provide the vehicle through which instruction and other services are provided to students. All students are members of a cluster, and all clusters are headed by a cluster coordinator, who is a part-time representative of Nova Southeastern University. Doctoral residency is defined as continuous enrollment for one (1) calendar year.

Students may be admitted to an existing or new local cluster at the beginning of the fall, winter, or spring term.

Cluster coordinators and associate cluster coordinators are key members of the PHE faculty who are responsible for providing counseling and academic support service to students; for managing, within the guidelines set by the University, the guidance affairs of a local cluster; and for serving as a liaison between cluster members, the national lecturers, and the Programs for Higher Education. All cluster coordinators and associate coordinators are professional educators with earned doctorates who also render academic assistance to students.

Local Clusters

During the first two nine-month academic years for local clusters, formal instruction covers six of eight required seminars. The two specialization seminars are held in conjunction with the summer institutes. National lecturers travel to local clusters for the meetings of the core seminars. Clusters have an in-class enrollment of approximately 20 students.

Members of a local cluster are generally from the same geographic area and some may have the same employer. They share similar professional concerns and goals and often must deal with similar problems. Thus, local clusters usually form into closely knit educational-professional social groups that students often find sources of support, guidance, and inspiration. Many rewarding personal and professional relationships occur during the life of a cluster. (A listing of clusters can be found on page 36-37.)

International Cluster

The International Cluster was developed specifically for professionals who, because of location or employment considerations, are unable to participate in local clusters. It was designed to enable students to complete all requirements for the Ed.D. degree without taking extensive leave from their positions of employment. The cluster now serves students across the U.S., Canada, Europe, Latin America, and the Far East.

The International Cluster employs a combination of field-based delivery, supervised study, and formal instruction in intensive summer sessions. The program components include a minimum of three regional cluster meetings, two summer sessions, and two summer institutes. In addition to an orientation meeting in the winter, one International Cluster meeting is scheduled the following year at the operational International Cluster site. Summer sessions are held during the two weeks prior to the summer institute. International students for whom English is a second language are required to attend an orientation program in advance of these dates.

Students who are members of the International Cluster are provided with the same high academic standards, services, and instruction that have attracted more than 2,000 postsecondary administrators, faculty, trainers, and consultants from across the United States and the world to the Programs for Higher Education of Nova Southeastern University. However, unlike students who attend a local cluster, International Cluster students travel three or six times to an instructional location during the three years of the program.

Currently, approximately 30% of all students enrolled at the University are taking classes through distance education delivery systems.

How the International Cluster Works

Three-Time Travel Option

As described in this catalog, students are required to complete six core and two specialization seminars. During the spring term, students begin work on two core seminars via a distance-learning component. Each seminar culminates in a one-week session prior to the summer institute for a total of two weeks. During the spring term, students are also sent specialization seminar material. Many of the written assignments are completed prior to the institute. However, the in-class portion of the seminar is held in conjunction with the institute. The time spent in class, with the core and specialization seminars and summer institute, is three weeks. This procedure is repeated during the second year. During the third year of the program, students need attend only the two-week core seminars. The specialization seminars will have been completed.*

**International students for whom English is a second language do not take a specialization seminar at the first summer institute; therefore, they must complete their specialization seminars during the second and third summer institutes.*

Six-Time Travel Option

In lieu of traveling to the designated city for instruction during the third year, students may complete two additional core seminars during the winter term of the first and second

years. For those selecting this option, course material for the winter core seminars is mailed at the end of November. Students attend two weekend sessions—one in January and the other in March. This procedure is repeated during the second year of the program.

DOCTORAL CANDIDACY POLICY

As of June 1996, doctoral students must attain candidacy status prior to the Center Provost's recommendation for graduation to the President and Board of Trustees. This addition to the graduation requirements for FCAE doctoral students reflects the belief that the rigor and quality of the doctoral program are enhanced by a quality check by a Candidacy Committee made up of doctoral faculty from all center doctoral programs and by demonstrating the programs are meeting the spirit of the criteria of Nova Southeastern University's regional accrediting body.

The format and process of the candidacy requirements are explained in the *Manual of Policies and Procedures for Students of the Programs for Higher Education*.

More than 10,000 NSU graduates have received their degrees via distance education formats.

TRAVEL OPTIONS FOR INTERNATIONAL STUDENTS

THREE-TIME TRAVEL

First Year	July/August	3 weeks (2 core seminars and 1 specialization seminar)
Second Year	July/August	3 weeks (2 core seminars and 1 specialization seminar)
Third Year	July	2 weeks (2 core seminars)

SIX-TIME TRAVEL

First Year	January	1 weekend (1 core seminar)
	March	1 weekend
	July/August	3 weeks (2 core seminars and 1 specialization seminar)
Second Year	January	1 weekend
	March	1 weekend (1 core seminar)
	July/August	3 weeks (2 core seminars and 1 specialization seminar)

GRADUATION REQUIREMENTS

Students must fulfill the following graduation requirements:

1. Attend and pass eight seminars (24 credits).
2. Pass four practicums (16 credits).
3. Attend two summer institutes.
4. Successfully complete the comprehensive examination.
5. Successfully complete the individualized evaluation (7 credit hours), the MARP proposal (7 credit hours) and MARP report (7 credit hours).
6. Be current in all tuition, fees, and miscellaneous charges, including those for books purchased.

Total requirements: 61 credits. (All requirements must be completed within seven years from the date of the beginning of the term of entry.)

PHE has adopted minimum progress requirements to ensure student success within the seven-year time limit. The requirements are contained in the *Manual of Policies and Procedures for Students*. A student who does not achieve minimum progress may not be eligible to continue, even though the time limit has not expired. Students wishing to appeal the dismissal must petition for readmittance.

ADMISSIONS

Admission to the program requires (1) a master's degree with at least a 3.0 GPA from a regionally accredited institution, (2) current employment in a job related to the applicant's area of specialization, and (3) three recommendations from senior academic or administrative personnel in the applicant's place of employment, (the recommendations are to be written on forms included in the catalog), (4) an interview with a PHE representative, and (5) a portfolio. An individual who wishes to apply for admission should:

1. Complete the graduate admission application packet (see page 57) and submit it with a \$50 nonrefundable application fee (payable to Nova Southeastern University) and mail to the Programs for Higher Education office.
2. Request that official transcripts of all previous academic work be sent to the same office. An official transcript of the master's degree should be submitted immediately to begin the application process.
3. Request recommendations from three supervisors or administrators using the forms contained in the application packet. The supervisors or administrators should attest to the nature of the applicant's job performance.
4. Complete and return the portfolio following notification of provisional admission. Each admission file must be complete by the end of the first term of enrollment.

All applicants must be able to demonstrate to program officials that they have access to a computer and modem, at home or work, in order to be admitted to the program. In addition, they must apply for and utilize an NSU UNIX account to remain in good standing.

Applications are received and considered throughout the year.

Note: GRE scores are required for students in the Greenwood Cluster (South Carolina).

NSU has been fully accredited by the Commission on Colleges of the Southern Association of Colleges and Schools (SACS) every year since 1971.

International Students Admission

Prospective international students who completed degrees at universities outside the U.S. must have the degrees evaluated by a NSU-approved evaluation service.

Applications for such an evaluation are available from the FCAE Admissions Office at 800-986-3223, Ext. 8685. The prospective student is responsible for all fees incurred for this evaluation.

Specialization Admission

The following is a description of the five PHE specializations, for whom they are intended, and the requirements necessary for admission.

ADULT EDUCATION

Encompasses all the educational activities systematically organized and provided by a variety of institutions in different systems (business, education, government, health, religion, military) for the purposes of promoting the personal and social development of adults.

The Ed.D. specialization in adult education seeks to assist adult education professionals in increasing their knowledge of history, philosophy, theory, research, methods, and practices of adult education to identify and meet the educational needs of adult students. To be considered for admission in the Ed.D. specialization in adult education, practicing professionals must be directly engaged in teaching, administering, or supporting programs specifically designed to address the educational needs of adult students. These programs may be delivered in some of the following settings:

1. Continuing education programs and returning adults in postsecondary institutions.
2. Education, training, and development programs in business and industry, governmental and military agencies, and health and religious organizations.
3. Public and community education programs for adults.

COMPUTING AND INFORMATION TECHNOLOGY

Intended for the professional development of practitioners regularly employed in adult education; health care education; higher education; and vocational, technical, occupational education; and who work with computers and information technology in instruction-related or information management roles. Persons in the education fields listed above who work in such functions or settings as information systems, computer center operations, computer networking, computer assisted or computer-managed instruction, computerized libraries, and database management and administration should find the specialization in computing and information technology valuable.

HEALTH CARE EDUCATION

Intended for the professional development of educational practitioners regularly employed in health care education roles in such settings as hospitals; schools of nursing or allied health; colleges and universities; vocational/technical institutions; government agencies; or the military, business, or industry. The health care education specialization is intended to meet the needs of the health care academic community, as well as of those who are involved in the education and training of practitioners already in the field. The initial preparation of health care personnel and the continued development and maintenance of a qualified and competent health care workforce in a changing society are equally critical elements in an effective health care system.

Persons serving as educational program administrators, curriculum specialists, faculty, trainers, human resources development staff, health promotion, or consumer health education personnel should benefit from completing the specialization in health care education. It should be noted that the program is not for care givers, but rather for those involved in the training, education, or staff development of care givers, patients, or members of the general public.

NSU's rural medical program was cited in a Congressional study as among the ten best in the nation.

HIGHER EDUCATION

Its scope is all education leading to a degree beyond the secondary level. The program is committed to enhancing those persons who teach, manage, or support the mission of higher education within an organizational context.

The specialization in higher education is intended for persons regularly employed in postsecondary institutions. This includes faculty and/or staff working in higher education institutions or those in public, private, local, state, or federal agencies/organizations related to higher education.

VOCATIONAL, TECHNICAL, OCCUPATIONAL EDUCATION

Encompasses all aspects of the education of women and men for economic independence as productive and contributing members of society and its organizations, including business and industry, community and government, and secondary and postsecondary education. The vocational, technical, occupational education specialization reflects a commitment to prepare practicing professionals in a wide variety of vocational education settings to meet the needs of all citizens for sustained effectiveness in a rapidly changing workplace.

The specialization in vocational, technical, occupational education is intended for practicing professionals in the following areas:

1. vocational, technical, occupational education divisions of schools, colleges, universities, business, industry, labor, the armed services, correctional facilities, and centers for rehabilitative services;
2. educational and governmental agencies;
3. training and development programs in the workplace;
4. public schools, community, and returning adult career-development programs; and
5. primary and supportive roles in the occupational preparation of a broad range of learners.

International Students

International students who intend to reside in the United States and who are required to obtain an I-20 visa must be full-time, degree-seeking students and must attend the Main Campus in Fort Lauderdale, Florida. For further information, contact the International Student Advisor, Nova Southeastern University, 3301 College Avenue, Fort Lauderdale, Florida 33314-7796, telephone (954) 262-7240.

International Students for Whom English Is a Second Language

In addition to the general requirements previously listed, the admissions process for I-ESL students includes:

1. The requirement of a minimum score of 550 on the Test of English as a Foreign Language (TOEFL) or successful completion of a graduate degree in residence at a regionally accredited North American college or university.
2. The submission of the portfolio, a current requirement for admission of all students, at or prior to the first summer session.
3. Certification that they own or have proximate access to a fax machine, so that long-distance communications with PHE program personnel can be enhanced.
4. Receipt of the completed application and fees in the PHE office by March 1 for those intending to enroll the following spring and summer terms; September 1 for those planning to attend the fall term; or November 1 for those planning to attend the winter term.

Qualified applicants applying by March 1 will be admitted to the program in a provisional status and will be invited to enroll for the forthcoming spring term, summer term, and summer institute. Beginning I-ESL students will not take a specialization seminar at that first summer institute, but will participate in the institute only. This will mean a "three-institute" attendance requirement for these students. Qualified applicants applying by November 1 will be invited to enroll for the winter core-seminar session.

In 1993, the College of Career Development was one of three Colleges in the nation recognized by the College Board for "excellence in the assessment and recognition of learning to motivate students in their pursuit of higher education."

An international student admissions committee will formally review the preparation and academic progress of I-ESL students who are in this provisional admission status at the conclusion of the two-week, core-seminar summer session or the winter core-seminar session, as appropriate. Students whose language, communication, and academic performance are satisfactory will be offered unconditional admission, providing all other admissions requirements have been met. Students whose performance is not satisfactory or who are deemed to be high-risk candidates by the committee will either be counseled about the risks or denied admission on the recommendation of the committee. Those denied admission and who have paid tuition for more than two terms will have the final term's tuition refunded.

Admissions Portfolio

The admissions portfolio is requested once a candidate has submitted all other required admission information and has been provisionally accepted. A booklet explaining the admissions portfolio is provided to each candidate.

The admissions portfolio:

1. Provides an opportunity for the candidate to amass and demonstrate total educational, professional, career, and personal accomplishments.
2. Will be used as part of a longitudinal research study by PHE to determine the effectiveness of its admission requirements.
3. Can be used as a source of data for counseling those in the program.

The admission portfolio should include: a resume of work experience, formal and informal learning experiences, professional involvement and accomplishments, independent learning activities, experience in research, and a statement of goals. It should be completed and submitted by the end of the first term of enrollment. Once this and all other admissions documents are received, the candidate's admissions file is complete.

Accompanying material will not be returned; therefore, an applicant should not submit original copies of documents or the "only copy" of documents.

For answers to questions regarding the admissions portfolio, please call (954) 262-8527 or toll free 800-986-3223, Ext. 8527. The e-mail address is pheinfo@fcae.nova.edu

Transfer Credit

A maximum of six semester hours of post-master's degree, doctoral-level credit, earned from a regionally accredited institution within the past three years, will be considered toward meeting the Programs for Higher Education graduation requirements. These credits will be evaluated for transfer against up to two of the core or specialization seminar requirements. No credit for experiential learning or other forms of advanced standing will be granted. Grades for courses transferred must be A, B, or equivalent.

Applicants who wish to request evaluation of prior course work for consideration as transfer credit should note this on their application, send course description(s), and request that official transcripts be sent to PHE. Current students should request and receive prior written approval from PHE central staff before enrolling in any courses at another institution intended to be submitted for transfer credit. This request should include an explanation and related course description(s).

Credits earned at Nova Southeastern University are transferable at the discretion of the receiving school. Students who wish to transfer credit should contact the admissions office of the receiving school for information.

GRADING SYSTEM

Seminars

Students enrolled in the Programs for Higher Education receive grades of PASS, NO PASS, INCOMPLETE, and AUDIT for seminars. Grades for a given seminar are assigned by the national lecturer responsible for that seminar.

An INCOMPLETE for a seminar indicates the student has not completed the seminar requirements. To be considered for an INCOMPLETE grade, a student must have demonstrated timely progress in the seminar up to the point when extenuating circumstances hindered seminar completion. If, after a discussion with the national lecturer, the lecturer determines it is reasonable to expect that the student will be able to complete the requirements of the seminar within a specified time period, the student will be granted an INCOMPLETE grade. An INCOMPLETE must be made up within six months from the end of the term when the grade was awarded. If not, it becomes a NO PASS.

A NO PASS indicates one of the following: the student (1) did not meet the attendance requirements; (2) has attempted to satisfy all requirements in the seminar, but because of the quality of the assignment has failed to do so; or (3) has not completed all requirements and there is no evidence that an attempt to do so has been made. Any student receiving a NO PASS must repeat the seminar.

An AUDIT grade is issued by the national lecturer when a student is registered "not for credit" in a particular seminar under the following conditions:

1. There is space available in the class.
2. The national lecturer has agreed to accept the individual student.
3. The student attends the seminar meetings, participates in the discussions, and does the readings.
4. No papers, tests, or exams are required.
5. The student is registered and has paid for the term in question.

No change in registration status, other than withdrawal, is permitted after the seminar begins. AUDIT grades do not count toward meeting graduation requirements, and no credit will be awarded.

Practicums

Grades of PASS, UNACCEPTABLE, and NO PASS are assigned for practicums. Practicum grades are assigned by practicum evaluators.

A grade of UNACCEPTABLE means that the practicum needs revision. A student is given two chances over a six-month period to present an acceptable revision. If not, the present practicum expires and the student must initiate a new proposal. When a practicum receives an UNACCEPTABLE on the second revision, a NO PASS is assigned and the student must begin a new practicum on a new topic.

Comprehensive Exams

Grading of the comprehensive exam is done by a representative three-member faculty panel. The student has two opportunities to pass this exam. On the first attempt, potential grades are HIGH PASS, PASS, and UNACCEPTABLE. Grades that may be awarded on the second attempt are HIGH PASS, PASS, and NO PASS.

Satisfactory completion of the comprehensive examination is required before "readiness" is acknowledged and candidacy approved. Those deemed *not ready* (because they received a grade of UNACCEPTABLE on the first attempt) will be counseled and urged to develop a plan of action that will remedy deficiencies. Students who fail to move satisfactorily to candidacy after the second attempt will be terminated from the program and are not eligible for readmission.

MARPs

A grade of PASS is awarded upon successful completion of the MARP.

Nova Southeastern University ranks in the upper 2% with respect to the largest total enrollment of private institutions nationally.

General Policies on Grades

Students who receive two NO PASS grades will be terminated from the program and are not eligible for readmission.

Each student will be provided a grade/progress report at the end of every term. A copy of each report will be placed in the student's permanent file maintained by the University.

The University maintains up-to-date progress reports on each student. The University periodically furnishes each student with a working transcript that shows the current status of grades and earned semester hours for all courses completed and/or attempted.

Transcripts are maintained on a permanent basis after the student is no longer enrolled.

STUDENT STATUS

Status is determined by registration, payment, and academic progress. Students who register and pay appropriate tuition and fees each term are considered enrolled. Students who do not register and pay tuition and fees are considered withdrawn.

Withdrawal

General Provisions on Withdrawal

If a student fails to register or pay tuition, for a particular term, the central office staff will administratively **withdraw** the student as of the first day of that term, after making a reasonable effort to contact the student with a request for registration or payment.

Withdrawal for a period does not suspend "time limit for completion" requirements. (See seven-year time limit requirement under **Graduation Requirements** on page 12.)

Withdrawal from Program; No Intention to Return

Voluntary requests to withdraw completely from the program should be made to the program dean and the cluster coordinator. This request should specify the date and term in which the withdrawal is effective. Students are encouraged to explain the reason for the request and program-related problems, if any, that led to the decision.

Withdrawal from Term; Intention to Reinstatement

Students occasionally have personal, professional, or health reasons for withdrawing, or stopping-out, for a term. Such requests should be made to the program dean and the cluster coordinator. The reason for the withdrawal should be explained and the planned date and term of re-entry stated. The central office acknowledgement of this request will include a "Reinstatement Request" and an "Action Form," including instructions regarding the reinstatement process. (See the following **Reinstatement** section.)

Students in "stop-out" status are not eligible for academic services from program faculty and staff, and may not have grades posted to their records, except for changes of INCOMPLETE grades earned in seminars. They will continue to receive the *Practitioner's News*, and revised publications such as the practicum and MARP guides and the Manual of Policies and Procedures for Students. Students who stop out for more than one term may be subject to financial aid penalties, such as requests for loan repayment.

Withdrawal from Seminar; Intention to Remain Enrolled for Term

Students may have legitimate reasons to request withdrawal from a core or specialization seminar or be advised to do so by the national lecturer. Such students may wish to remain enrolled in the program in order to accomplish other work, such as practicums, a summer institute, or the comprehensive exam. A request to **withdraw from a seminar** should be made to the program dean and the cluster coordinator, and should state the desire to remain enrolled for the term in question. The registration for the term will be changed to drop the particular seminar and add "PRA

NSU exhibits broad diversity in ethnic, gender, and age groups.

Approximately 50,000 people hold one or more degrees from Nova Southeastern University. More than 20,000 of those are graduates of FCAE programs.

8070 Practicum Services" or "PRA 8090 MARP Services," as appropriate.

Students may withdraw from a seminar, without academic penalty, at any time prior to the final class meeting; they may not withdraw after the last class session or just before seminar grades are issued.

Following the final meeting, since no official withdrawal is possible, students will receive whatever grade they have earned in the seminar, as determined by the national lecturer.

Plans to re-register for the dropped seminar should be discussed with the cluster coordinator.

Some seminars are offered only once at particular sites. Students are advised that failure to attend a seminar when it is offered at their cluster site may create some difficulties in making up the missed seminar. For this reason, students are urged to maintain continuous enrollment during the seminar portion of the program.

Reinstatement

In order to be reinstated after a period of withdrawal, a student must submit, to the program dean, at least 30 days prior to the appropriate term:

1. a letter of intention to re-enroll (please send a copy to the cluster coordinator);
2. a completed reinstatement form (this form is sent with the acknowledgement of withdrawal or is available from the central office); and
3. a \$35 reinstatement fee by check or money order (payable to Nova Southeastern University) attached to the reinstatement form.

Students who are readmitted will be required to pay tuition and fees in effect at the time of reinstatement.

FINANCIAL INFORMATION

Tuition and Fees

A nonrefundable application fee of \$50 must be submitted with the application. (See **Refunds** section for the one exception.) The following tuition and fees are effective July 1, 1997.

Tuition for the 1997-1998 academic year is \$7,980. Tuition payments are due 15 days prior to the beginning of each three-month term. (The first payment can be made at the first class meeting.) There are four terms in the academic year. Therefore first-, second-, and third-year students may make four partial payments of \$1,995 per term. The \$1,995 includes a \$15 registration fee per term.

Tuition beyond the third year is \$1,275 per term. The \$1,275 includes a \$15 registration fee per term. Students who enroll and pay tuition beyond the third year (beyond 12 terms of enrollment) will receive a refund of \$600 if they complete all program requirements within the first month of the term.

Attendance at two summer institutes is required for graduation. While there are no additional fees for the summer institutes, students must be currently registered and paid for the summer term and are responsible for their own transportation and living expenses. Hotel rooms are available at special convention rates.

Upon meeting graduation requirements, each student must pay a MARP microfiche fee of \$65 plus \$65 fee to accompany the application for degree (separate from MARP fee). Additional fees include a late registration fee of \$60 and a late payment fee of \$50 for those students not meeting a tuition payment deadline. There is also a readmission fee of \$35 for those who withdraw and then complete the reinstatement process.

Based on a 1994 study by the National Research Council, Nova Southeastern University ranked third among 278 doctorate-granting institutions nationwide in the number of doctoral degrees awarded to African-American students.

Tuition Refund Policy

Students are entitled to a full refund of tuition (excluding registration/application fees of \$100 or less) if the enrollment agreement is canceled by the student within 10 days of signing the enrollment agreement or when the payment is required, if these events are before the first class session. After the first class session there will be no refund of the registration/application fees and a prorata refund of the tuition.

In addition, students will receive a full refund of tuition payments and registration/application fees paid:

1. if they do not meet minimum admission requirements;
2. for a canceled course, seminar, workshop, or a cluster that does not begin;
3. involuntary call to active military duty;
4. documented death of the student or member of his or her immediate family (parent, spouse, child, sibling);
5. severe illness of the student (as approved by the institution and confirmed in writing by a physician) that completion of the term is precluded; or
6. exceptional circumstances approved by the president or designee.

After the first day of instruction, students who inform the program dean of their intention to withdraw will be entitled to a tuition refund based on the following schedule: during the first 70 percent of a course, term, seminar, or summer institute, a withdrawing student will receive a prorated refund for the percentage of time not attended (the minimum refund is 40 percent). Thereafter, no refund is available.

Refunds will be made within 30 days (10 days as required by the state of Wisconsin) after the effective date of withdrawal.

Unless withdrawal procedures have been completed within the stated deadline, students are assumed to be active and are responsible for tuition payments that may apply to their signed registration forms whether or not an initial payment has been submitted.

Example #1: Student attended three classes (15 clock hours) of a nine-class (45 clock hours) course, for which the charge was \$1,100.

Based on no. of classes

$$9 - 3 = 6 \text{ classes not attended}$$

$$6 \div 9 = 67\% \text{ of the term not completed}$$

$$67\% \times \$1,100 = \$737.00 \text{ refunded}$$

Based on clock hours

$$45 - 15 = 30 \text{ hours not received}$$

$$30 \div 45 = 67\% \text{ clock hours not completed}$$

$$67\% \times \$1,100 = \$737.00 \text{ refunded}$$

Example #2: Student attended 5 weeks (17 clock hours) of a 13-week (45 clock hours) term, for which the charge was \$1,885.

Based on no. of classes

$$13 - 5 = 8 \text{ weeks not attended}$$

$$8 \div 13 = 62\% \text{ not completed}$$

$$62\% \times \$1,885 = \$1,168.70 \text{ refunded}$$

Based on clock hours

$$45 - 17 = 28 \text{ hours not received}$$

$$28 \div 45 = 62\% \text{ clock hours not completed}$$

$$62\% \times \$1,885 = \$1,168.70 \text{ refunded}$$

This policy is designed to meet or exceed refund requirements of various states (e.g., California, South Carolina, Washington, Indiana, Wisconsin, and Florida).

Financial Aid

Nova Southeastern University's Office of Student Financial Aid staff administers comprehensive federal, state, institutional, and private financial aid programs. The purpose of these programs is to provide monetary assistance to students who can benefit from further education but who cannot do so without such assistance. Students interested in receiving a financial aid packet should contact the Office of Student Financial Aid at (954) 262-3380 or 800-522-3243.

A large majority of NSU students are working adults; accordingly, the University has structured its academic programs and delivery systems to meet the needs of this population.

When to Apply for Financial Aid

It is recommended that students apply for financial aid well in advance of the date the funds will be needed because normal application processing takes 6 to 8 weeks and sometimes as many as 12 weeks. It is extremely important that students complete all forms correctly and respond promptly to all inquiries in order to prevent delays in processing. Awards are made only for the academic year. Applications are generally available each January for the following academic year. There is a priority deadline of April 1, 1997 for the 1997-1998 academic year. Applications received after that date will be considered on a funds-available basis only. Students requesting financial aid for the summer term must complete a separate summer aid application that is generally available after January. The last day to apply for any financial aid for 1997-1998 is June 30, 1998.

To improve telephone service to financial aid applicants, NSU's Office of Student Financial Aid has a telephone voice response system. The Automated Telephone Counseling (ATC) System helps students access information regarding financial aid applications. General financial aid information may be obtained, packets may be requested, or application status can be checked (including loan disbursement information) simply by entering in the student's Social Security Number and four digit PIN number (birth month and year). The ATC is available 24 hours a day, 7 days a week, and file information is updated daily. The ATC may be accessed locally at (954) 262-3380 or toll free at 800-522-3243.

General Eligibility Requirements

In order to participate in the financial aid program, a student generally must:

1. be a U.S. citizen, permanent resident, or in the United States for other than a temporary purpose and be able to provide proof of such;
2. be accepted for enrollment in an eligible degree-seeking program at Nova Southeastern University;
3. be making satisfactory progress in his or her course of study;
4. not be in default of or owe a refund for any financial aid received previously;
5. sign a Statement of Educational Certification; and
6. be registered with Selective Service if required to do so by federal law.

Veterans' Benefits

All programs described in this catalog are approved for the training of veterans and other eligible persons by the Bureau of State Approval for Veterans' Training, Florida Department of Veterans' Affairs. Eligible veterans and veterans' dependents should contact the Office of the University Registrar, 3301 College Avenue, Fort Lauderdale, Florida 33314-7796, telephone (954) 262-7241 or toll free 800-541-6682, Ext. 7241.

Program Services

Services are provided to students who are currently enrolled in the program. Students who withdraw or who are dropped from the program by the University are not entitled to receive services. The only exception to this rule is in the case of removal of INCOMPLETE seminar grades (see "Withdrawal" pg. 17).

GRADUATE ADMINISTRATIVE FELLOWSHIPS

The Programs for Higher Education offers two graduate administrative fellowship positions each academic year.

The purpose of offering these fellowships is to make it possible for students: (1) to study on campus and gain the experience of working in PHE; (2) to attend seminars with the South Florida Cluster; (3) to engage in practicums and a MARP that will be of value to PHE.

In addition to a yearly stipend, each graduate fellow's tuition for four terms and expenses for one summer institute will be paid by the Programs for Higher Education. Graduate administrative fellowships are awarded for a one-year period. Persons interested in a fellowship position should send a letter of intent and a current resume to the PHE dean by January 31.

ATTENDANCE

Seminar Attendance

Attendance at all sessions of each seminar is required. Any exception to this policy must be based on an emergency circumstance and an agreement with the national lecturer in respect to alternative learning activities.

1. Such an agreement to make up work requires the completion of specified assignments relating to the missed session. The assignments vary in form, but they must be agreed upon at an early date and provide some method for the student to obtain the information from the seminar session.
2. After the make-up agreement has been finalized, the national lecturer must inform the Programs for Higher Education office and the cluster coordinator regarding the arrangements.

Under no circumstances may a student receive credit for a seminar if more than one seminar meeting is missed.

Summer Institute Attendance

Attendance at two summer institutes is required for graduation. While there is no additional fee for the summer institutes, students must be currently enrolled and pay their own transportation and living expenses.

NSU spent more than \$14,600 per full-time-equivalent student in FY 1996. Much of this was for continued upgrading and expansion of the University's technology infrastructure.



Fischler Center's expansive new campus in North Miami Beach.

COURSE NUMBERS AND TITLES

Students are taught by nationally recognized authorities drawn from major universities and other institutions across the country who are hired on the basis of their subject expertise, teaching ability, and professional recognition. Core national lecturers travel to each cluster to conduct the sessions for each of the required seminars.

Specialization national lecturers teach their seminars at the summer institute.

The following list includes seminar faculty. Degree information is on page 27-34.

CORE SEMINARS

ECD 8003 - Curriculum and Program Planning

Eileen E. Morrison
Karen Overfield
Vicki L. Riley
Linda S. Scheirton
Marcia A. Wratsher

ECD 8007 - Governance and Management

John D. Cooper
Nancy F. Gadbow
Rosemary Gillett-Karam
Olga A. Holden
Marie V. McDemmond
Robert C. Messina
Anne E. Mulder
Jack N. Wismer

ECD 8008 - Human Resources Development

Barbara G. Carnes
Stan A. Hannah
Linda M. Howard
Teri J. Traaen

ECD 8009 - Leadership

Albert T. Haugerud
Carmon J. Kiah
Lynn M. Little
Joan B. Murry

ECD 8013 - Research Methodology

Grady M. Grizzle
Gary E. Rankin
James R. Valadez
Lara J. Wolfson

ECD 8021 - Societal Factors Affecting Education

Nancy F. Gadbow
Olga A. Holden
Kenneth E. Varcoe
Lois J. Zachary
David L. Zierath

SPECIALIZATION SEMINARS IN ADULT EDUCATION

EAD 8003 - History, Philosophy and Practices of Adult Education

Karen D. Bowser
James M. Wilburn, III

EAD 8007 - Theory and Methods of Adult Education

Nancy F. Gadbow
Linda M. Howard

SPECIALIZATION SEMINARS IN COMPUTING AND INFORMATION TECHNOLOGY

EID 7370 - Database Management Systems

Stan A. Hannah

EID 7390 - Computer Information Networks

Stan A. Hannah

SPECIALIZATION SEMINARS IN HEALTH CARE EDUCATION

HCE 8002 - Concepts and Values in Health Care Education

Linda S. Scheirton
Jozef Welie

HCE 8003 - Preparing and Developing Staff in the Health Care Professions of the Future: A Changing Educational Paradigm

Sonia J.S. Crandall
Martha M. Sanders

SPECIALIZATION SEMINARS IN
HIGHER EDUCATION
EHD 8002 - Politics, Law, and Economics of
Higher Education

Daniel L. Austin
Rosemary Gillett-Karam
Anne E. Mulder

EHD 8006 - Emergence of Higher Education
in America

Donald W. Bryant
Kenneth E. Varcoe
James L. Wattenbarger

SPECIALIZATION SEMINARS IN
VOCATIONAL, TECHNICAL,
OCCUPATIONAL EDUCATION
ETD 8006 - Emergence of Vocational,
Technical, and Occupational Education in
America

Michelle D. Chinoda

ETD 8008 - Trends and Issues in
Vocational, Technical, and Occupational
Education

Michelle D. Chinoda

PRACTICUM NUMBERS AND TITLES

Students register for practicum services (PRA 8070) and when the projects are completed, they are awarded credit in the following areas:

EID 8390

Practicum - Computer Information Networks

EHD 8072 or EAD 8072 or

ETD 8072 or HCE 8072 or

EID 8072

Practicum - Curriculum and Program Planning

EID 8370

Practicum - Database Management Systems

EHD 8076

Practicum - Emergence of Higher Education in America

ETD 8077

Practicum - Emergence of Vocational, Technical, and Occupational Education in America

HCE 8083

Practicum - Emerging Social and Ethical Issues in Health Care Education

EHD 8071 or EAD 8071 or

ETD 8071 or HCE 8071 or

EID 8071

Practicum - Governance and Management

EAD 8079

Practicum - History, Philosophy, and Practices of Adult Education

EHD 8078 or EAD 8078 or

ETD 8078 or HCE 8078 or

EID 8078

Practicum - Human Resources Development

EHD 8081 or EAD 8081 or

ETD 8081 or HCE 8081 or

EID 8081

Practicum - Leadership

EHD 8077

Practicum - Politics, Law, and Economics of Higher Education

HCE 8084

Practicum - Preparing and Developing Staff in the Health Care Professions of the Future: A Changing Education Paradigm

EHD 8075 or EAD 8075 or

ETD 8075 or HCE 8075 or

EID 8075

Practicum - Research Methodology

EHD 8074 or EAD 8074 or

ETD 8074 or HCE 8074 or

EID 8074

Practicum - Societal Factors Affecting Education

EAD 8080

Practicum - Theory and Methods of Adult Education

ETD 8082

Practicum - Trends and Issues in Vocational, Technical, and Occupational Education

SUMMER INSTITUTE NUMBERS AND TITLES

ECD 8060

Summer Institute - 1

ECD 8061

Summer Institute - 2

COMPREHENSIVE EXAMINATION NUMBER AND TITLE

ECD 8100

Comprehensive Examination

MAJOR APPLIED RESEARCH PROJECT NUMBERS AND TITLES

Students registering for MARP services (PRA 8090) are awarded credit in the following areas when the projects are completed:

EHD 8093 or EAD 8093 or
ETD 8093 or HCE 8093 or
EID 8093

Major Applied Research Project Proposal

EHD 8094 or EAD 8094 or
ETD 8094 or HCE 8094 or
EID 8094

Individualized Evaluation and Satisfactory Progress on the Major Applied Research Project

EHD 8095 or EAD 8095 or
ETD 8095 or HCE 8095 or
EID 8095

Major Applied Research Project



PROGRAMS FOR HIGHER EDUCATION FACULTY

Full-time Faculty



NORMA M. GOONEN
Associate Director for Faculty and Curriculum Development, SACS Consultant, Member of the Director's Team, Central Staff

Committee Member, and Major Applied Research Project Advisor at Nova Southeastern University in Fort Lauderdale, Florida
Ed.D. University of Florida
M.S. Florida International University
B.A. Florida International University



STAN A. HANNAH
Program Professor, Computing and Information Technology; Specialization National Lecturer in Computer * Information

Networks and Database Management Systems; Seminar Coordinator and Core National Lecturer in Human Resources Development; Major Applied Research Project Advisor; and Central Staff Committee Member at Nova Southeastern University in Fort Lauderdale, Florida
Ph.D. Indiana University
M.B.A. Indiana University
M.L.S. Indiana University
B.A. Indiana University



LINDA M. HOWARD
Program Professor, Adult Education; Core National Lecturer in Human Resources Development; Specialization National Lecturer in

Theory and Methods of Adult Education; Major Applied Research Project Advisor; and Central Staff Committee Member at Nova Southeastern University in Fort Lauderdale, Florida
Ed.D. Arizona State University
M.A. Webster University
B.A. Webster University



RONALD C. KROLL
Associate Director for Cluster Support and Student Services, Practicum Evaluation, and Major Applied Research Project Advisor at Nova

Southeastern University in Fort Lauderdale, Florida
Ed.D. Nova Southeastern University
M.A. Eastern Michigan University
B.S. William Tyndale College



ROSS E. MORETON
Program Dean, Director's Team Chair, and Central Staff Committee Member at Nova Southeastern University in Fort Lauderdale, Florida

Ed.D. The University of Mississippi
M.S. East Tennessee State University
B.S. Carson-Newman College



ANNE E. MULDER
Program Professor, Higher Education; Core National Lecturer in Governance and Management; Specialization National Lecturer

in Politics, Law, and Economics of Higher Education; Major Applied Research Project Advisor; and Central Staff Committee Member at Nova Southeastern University in Fort Lauderdale, Florida
Ph.D. University of Michigan
M.A. University of Michigan
A.B. Transylvania University



JOAN B. MURRY
Program Professor, Higher Education; Core National Lecturer in Leadership and Coordinator for the Leadership Seminar at Nova Southeastern

University in Fort Lauderdale, Florida
Ph.D. The Union Institute
M.B.A. University of San Diego
B.A. University of California



MARTIN B. PARKS
Associate Director for Research, Major Applied Research Project Advisor, Director's Team Member, and Central Staff Committee Member

at Nova Southeastern University in Fort Lauderdale, Florida
Ph.D. The Ohio State University
B.A. Eastern Washington University
B.A. Eastern Washington University



DELORES M. SMILEY
Associate Director for Cluster Development and Marketing, Major Applied Research Project Advisor, Director's Team Member, and

Central Staff Committee Member at Nova Southeastern University in Fort Lauderdale, Florida
Ed.D. Nova Southeastern University
M.A. Western Michigan University
B.A. Western Michigan University

Part-time Faculty



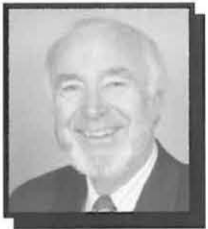
DANIEL L. AUSTIN
Specialization National Lecturer in Politics, Law, and Economics of Higher Education Director of the Division of Public and Social Service

Administration, School of Business and Entrepreneurship at Nova Southeastern University in Fort Lauderdale, Florida
Ph.D. University of Kansas
M.A. Missouri State University
B.A. Emporia State University



ANITA G. BARRETT
Coordinator of the Dallas Cluster Associate Dean of Instruction at Tarrant County Junior College, South Campus, in Fort Worth, Texas

Ph.D. University of North Texas
M.Ed. University of North Texas
B.S. Central State University



H.K. (MORRIS) BASKETT
Coordinator of the Calgary Cluster
Professor of Continuing Education at the University of Calgary, Canada
Ph.D. University of Sussex (U.K.)

M.A. University of Calgary
B.A. University of British Columbia



DAVID L. BOGGS
Major Applied Research Project Advisor
Professor of Educational Studies at the Ohio State University in Columbus, Ohio
Ph.D. Michigan State University

M.A. Catholic University of America
B.A. Sacred Heart Seminary



Photo not available

KAREN D. BOWSER
Specialization National Lecturer in History, Philosophy, and Practices of Adult Education
Director of Innovative

Learning/Assessment for the Training and Development Division at Highmark-Pennsylvania Blue Shield in Camp Hill, Pennsylvania
D.Ed. Pennsylvania State University
M.Ed. Pennsylvania State University
B.S. Indiana University of Pennsylvania



DIANE EDDINS BRYANT
Associate Coordinator for the South Florida Cluster
Educational Consultant in Fort Lauderdale, Florida
Ph.D. University of Pittsburgh

M.A. University of Pittsburgh
B.A. University of Pittsburgh



DONALD W. BRYANT
Specialization National Lecturer in Emergence of Higher Education in America
President of Carteret Community College

in Morehead City, North Carolina
Ed.D. North Carolina State University
M.A. University of Georgia
B.A. University of Georgia



Photo not available

MARILYN R. BUCKINGHAM
Coordinator of the Twin Cities Cluster
Dean of Business Program and Services at Inver Hills Community College in Inver Grove Heights, Minnesota

Ph.D. University of Texas at Austin
M.A. University of Minnesota
B.S. University of Minnesota



DONALD BUSCHE
Coordinator of the Orange County Cluster
Dean of Academic and Physical Support for the Services and Vocational Education

Department at Saddleback College in Mission Viejo, California
Ed.D. Nova Southeastern University
M.A. California State University
B.A. Los Angeles State University

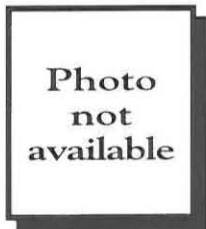


Photo not available

PAULA A. CALABRESE
Coordinator of the Western Pennsylvania Cluster
Assistant Superintendent for the Hampton Township School

District in Allison Park, Pennsylvania
Ph.D. University of Pittsburgh
M.S. Duquesne University
B.S. Duquesne University

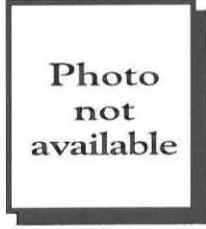


Photo not available

RICHARD CARDINALI
Major Applied Research Project Advisor
Adjunct Professor at Webster University in Webster Groves, Missouri

Ed.D. University of Massachusetts
M.Ed. Washington State University
M.A.T. Alaska Methodist University
B.S. University of Rhode Island

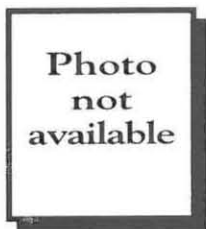


Photo not available

DANIEL L. CARLSON
Associate Cluster Coordinator of the Twin Cities Cluster
Chair of the Teacher Education Department of Crown College at St. Bonifacius, Minnesota

Ed.D. Nova Southeastern University
M.A. Eastern Michigan University
B.S. University of Minnesota



BARBARA G. CARNES
Core National Lecturer in Human Resources Development
Educational Consultant and President of Carnes and Associates,

Inc., in St. Louis, Missouri
Ph.D. Fielding Institute
M.P.A. University of Missouri
B.A. University of Missouri



MICHELLE D. CHINODA
Specialization National Lecturer in Trends and Issues in Vocational, Technical, and Occupational Education and Emergence of

Vocational, Technical and Occupational Education in America
Assistant Professor for the Department of Family and Consumer Science at Western Michigan University, Kalamazoo, Michigan
Ph.D. Pennsylvania State University
M.S. University of Akron
B.S. North Carolina Agricultural and Technical State University



PANSY COLLINS
Coordinator of the Springfield, Missouri Cluster
Associate Professor of English, Evangel College, Springfield, Missouri
Ph.D. University of Missouri

M.A. Southwest Missouri State University
B.A. Stephen F. Austin State University



TURNER COLLINS
Associate Cluster Coordinator of the Springfield, Missouri Cluster
Professor of Biology at Evangel College, Springfield, Missouri

Ph.D. University of Wisconsin
M.S. Texas Technical University
B.S. Stephen F. Austin State College



RICHARD C. CONRATH
Practicum Evaluator
Principal of the Conrath Group in Gainesville, Florida
Ph.D. Kent State University
M.Ed. Kent State University

S.T.L. Catholic University of America



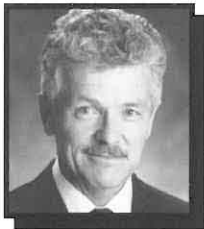
JOHN D. COOPER
Core National
Lecturer in
Governance and
Management
Dean of Career and
Occupational
Education at
Kellogg Community
College in Battle

Creek, Michigan
Ph.D. Michigan State University
M.B.A. Indiana University
B.A. Rutgers College



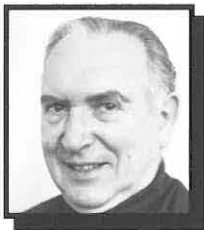
SONIA J. S. CRANDALL
Specialization
National Lecturer
in Preparing and
Developing Staff in
the Health Care
Professions of the
Future: A Changing
Educational

Paradigm, and Major Applied Research
Project Advisor
Assistant Professor for the Department of
Family and Community Medicine at
Bowman Gray School of Medicine in
Winston-Salem, North Carolina
Ph.D. University of Oklahoma
M.Ed. University of Illinois (Champaign)
B.S. Western Illinois University



PHILLIP C. DUCHASTEL
Central Staff
Committee Member
Program Professor
for Programs in
Education and
Technology at
Nova Southeastern
University, Fort
Lauderdale, Florida

Ph.D. Florida State University
M.S. Florida State University
B.A. University of Montreal



HYMAN S. EDELSTEIN
Local Research
Associate for the
Massachusetts
Cluster
Industrial
Consultant in
Northampton,
Massachusetts

Ed.D. University of Massachusetts
B.S. University of Massachusetts



SONJA A. EVESLAGE
Major Applied
Research Project
Advisor
Associate Vice
President of Public
Affairs at Thomas
Edison State
College in Trenton,
New Jersey

Ph.D. University of Minnesota
M.A. University of Minnesota
B.S. St. Cloud State University



DAVID S. FLIGHT
Major Applied
Research Project
Central Staff
Committee Member
Practicum Advisor
for the National
Ed.D. Program for
Educational Leaders
at Nova

Southeastern University in Fort
Lauderdale, Florida
Ph.D. University of Chicago
M.A. Columbia University
B.A. University of Pennsylvania



NANCY F. GADBOW
Specialization
National Lecturer
in Theory and
Methods of Adult
Education, Core
National Lecturer
in Societal Factors
Affecting Education

and Governance and Management,
Director's Team Member, Major Applied
Research Project Advisor, and Editor of
New Horizons in Adult Education
Mentor/Coordinator at SUNY Empire
State College in Canandaigua,
New York
Ed.D. Syracuse University
M.A. Miami University (Ohio)
B.A. Miami University (Ohio)



MARIAN GIBNEY
Coordinator for the
International
Cluster and
Research Associate
for the Phoenix
Cluster
Director of
Research and
Development and

faculty member of the Psychology
Department at Phoenix College, Maricopa
Community College District, Phoenix,
Arizona
Ed.D. Nova Southeastern University
M.A. Fordham University
B.A. Queens College (CUNY)



ROSEMARY GILLETT-KARAM
Core National
Lecturer in
Governance and
Management and
Specialization
National Lecturer
in Politics, Law and
Economics of
Higher Education

Associate Professor of Community College
Leadership at North Carolina State
University in Raleigh, North Carolina
Ph.D. University of Texas
B.A. University of Texas



GRADY M. GRIZZLE
Research Associate
for the Dallas
Cluster and Core
National Lecturer
for Research
Methodology
Instructional Dean
at North Lake

College in Irving, Texas
Ph.D. North Texas State University
M.Ed. North Texas State University
B.S. North Texas State University



WARREN H. GROFF
Practicum Evaluator
and Major Applied
Research Project
Advisor
Educational
Consultant in
Memphis,
Tennessee

Ed.D. Temple University
M.Ed. Pennsylvania State University
B.S. Millersville University



RICHARD K. HARRIS
Coordinator of the
Los Angeles North
Cluster
Professor and
Department Chair
for the Education
Department at the
Master's College in

Santa Clarita, California
Ed.D. Nova Southeastern University
M.A. University of Redlands
B.A. Seattle Pacific University



ALBERT R. HAUGERUD
Core National Lecturer in Leadership Educational Consultant in Issaquah, Washington
Ph.D. University of Washington

M.A. University of Washington
B.S. University of Washington



RICHARD E. HOEHLIN
Coordinator of the Richmond Cluster Executive Director for Greenbrier North Family YMCA in Chesapeake, Virginia

Ed.D. Tidewater Community College
Ed.S. Michigan State University
M.A. Michigan State University



OLGA A. HOLDEN
Core National Lecturer in Governance and Management and Societal Factors Affecting Education Management Consultant/Trainer

in Lansing, Michigan
Ph.D. Michigan State University
M.A. Michigan State University
B.A. Michigan State University

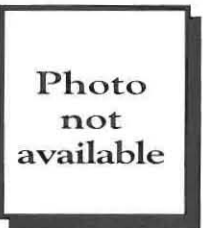


Photo not available

MARY-LOUISE HOLLOWAY
Coordinator of the Wausau Cluster Dean of Health Occupations at Northeast Wisconsin Technical College in Green Bay, Wisconsin

Ph.D. Ohio University
M.S.N. Marquette University
B.S.N. Marquette University



KATHY HOLLYWOOD
Central Staff Committee Member Program Professor for the National Ed.D. Program for Educational Leaders at Nova Southeastern

University in Fort Lauderdale, Florida
Ph.D. Fordham University
P.D. Fordham University
M.A. St. John's University
B.A. St. John's University



SUSAN KEEN
Associate Coordinator for the International Cluster Director of Corporate Education at Sunquest Information

Systems, Inc. in Tucson, Arizona
Ed.D. Nova Southeastern University
M.A. Vermont College
B.A. Seton Hill College



CARMON J. KIAH
Associate Coordinator for the Richmond Cluster and Core National Lecturer in Leadership Coordinator of Institutional Research at John

Tyler Community College in Chester, Virginia
Ph.D. University of Maryland
M.A. Clark Atlanta University
B.A. University of Cincinnati



FREDERICK C. KINTZER
Major Applied Research Project Advisor Professor Emeritus at the University of California in Los Angeles, California
Ed.D. Stanford University

M.A. Stanford University
B.A. University of Washington



SUSAN KLAIBER
Practicum Evaluator Senior Research Associate at RMC Research Corporation in Portsmouth, New Hampshire
Ph.D. The Ohio

State University
M.A. The Ohio State University
B.S. Cornell University



GEORGE KONTOS
Central Staff Committee Member Program Professor for the Graduate Teacher Education Program at Nova Southeastern University in

Fort Lauderdale, Florida
Ed.D. University of Houston
M.A. University of Texas at Austin
B.A. University of Athens, Greece



HELEN S. LEPKE
Associate Cluster Coordinator for the Western Pennsylvania Cluster Associate Vice President and Director of International

Programs at Clarion University of Pennsylvania, Clarion, Pennsylvania
Ph.D. University of Akron
M.A. Middlebury College
B.A. Connecticut College for Women



LYNN M. LITTLE
Core National Lecturer in Leadership Chairman and Associate Professor for the Department of Medical Laboratory Sciences at the University of

Texas, Southwestern Medical Center in Dallas, Texas
Ph.D. University of Texas
M.B.A. University of Texas
M.S. University of North Texas
B.S. University of Texas



LINDA LOPEZ
Coordinator of the South Florida Cluster Principal Intern of Hallendale Adult Community Center in Hallendale, Florida
Ed.D. Nova

Southeastern University
M.S. Nova Southeastern University
B.S. Nova Southeastern University



JAMES E. LORION
Practicum Evaluator and Director's Team Member Educational Consultant in Seven Lakes, North Carolina
Ph.D. The Ohio State University

M.A. University of Michigan
B.A. Michigan State University



COURTNEY H. LYDER
Major Applied Research Project Advisor
Coordinator and Assistant Professor for the School of Nursing, Gerontology

Program at Yale University in New Haven, Connecticut
N.D. Rush University
M.S. Rush University
B.S. Rush University



MARJORY LYONS
Major Applied Research Project Advisor
Adjunct Instructor for the Graduate Teacher Education Program at Nova Southeastern University in Fort Lauderdale, Florida

Ph.D. Walden University
M.S. Butler University
B.A. State University of New York



LINDA R. MARKSTEIN
Associate Coordinator of the Philadelphia Cluster Professor for the Department of Developmental Skills at Manhattan Community

College, City University of New York, in New York City, New York
Ed.D. Nova Southeastern University
M.A. Kansas University
B.A. Mills College



SABASTIAN V. MARTORANA
Major Applied Research Project Advisor
Professor Emeritus at Pennsylvania State University in University Park, Pennsylvania

Ph.D. University of Chicago
M.A. University of Chicago
B.S. Buffalo State College

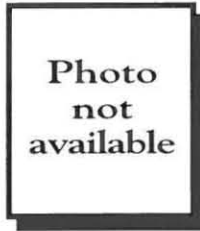


Photo not available

Sciences Department at Nova Southeastern University, Fort Lauderdale, Florida
Ed.D. Nova Southeastern University
M.Ed. Bowie State University
B.S. Boston University



MARIE V. MCDEMMOND
Core National Lecturer in Governance and Management
President of Norfolk State University in Norfolk, Virginia

Ed.D. University of Massachusetts
M.Ed. University of New Orleans
B.A. Xavier University of Louisiana



RUTH M. MCKEEFERY
Major Applied Research Project Advisor
Dean Emeritus at Thomas Edison State College of New Jersey and Educational

Consultant in Orlando, Florida
Ed.D. Virginia Polytechnic Institute
M.Ed. Columbia University
B.A. Southwestern College (Kansas)



STEPHEN G. MCLEOD
Coordinator of the West Florida Cluster
Adjunct Instructor of English for Pensacola Junior College in Pensacola, Florida

Ed.D. Nova Southeastern University
M.A. Vanderbilt University
B.A. University of West Florida



ROBERT C. MESSINA
Core National Lecturer in Governance and Management
President of Burlington County College in Pemberton, New Jersey

Ph.D. Fordham University
M.A. City University of New York
B.S. City College of New York



AUDNI MILLER
Major Applied Research Project Advisor
Director of the Organizational Leadership Program at Westbrook College in Portland, Maine

Ph.D. The Ohio State University
M.A. The Ohio State University
B.A. Texas Lutheran College



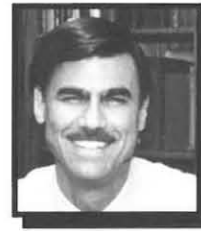
DIANE L. MORETON
Program Consultant at Nova Southeastern University in Fort Lauderdale, Florida
Ed.D. Nova Southeastern University

M.Ed. Trenton State College
B.S. Trenton State College



JOHN A. MORGAN, JR.
Coordinator of the Greenwood Cluster Educational Consultant in Greenwood, South Carolina
Ed.D. Nova Southeastern University

M.S. University of Colorado
B.S. Boston University



BRIAN K. MORLEY
Associate Coordinator for the Los Angeles North Cluster
Assistant Professor of Philosophy at The Master's College in Santa

Clarita, California
Ph.D., Claremont Graduate School
Th.M. Biola University
M.Div. Biola University
B.A. University of Southern California



EILEEN E. MORRISON
Practicum Evaluator and Core National Lecturer in Curriculum and Program Planning
Professor of Health Services Management at University of Mary

Hardin-Baylor in Belton, Texas
Ed.D. Vanderbilt University
M.P.H. University of Tennessee
B.S. University of Tennessee



RONALD A. NEWELL
Major Applied Research Project Advisor and Practicum Evaluator Program Professor for the National Ed.D. Program for Educational Leaders

at Nova Southeastern University in Fort Lauderdale, Florida
Ed.D. University of Arizona
M.S. Southern Illinois University
B.S. Southern Illinois University



R. ANDREW NIESIOBEDZKI
Associate Coordinator for the Tampa Cluster Assistant Professor of Philosophy and Religion at Manatee Community College in Venice, Florida

Ed.D. Nova Southeastern University
M.A. Biscayne College
B.A. St. Mary's College



BARBARA J. NORMAN
Associate Coordinator of the Chicago Cluster Executive for the Office of Community Public Health at the Illinois Department

of Public Health in Chicago, Illinois
Ph.D. University of Michigan
M.Ph. University of Michigan
M.S. DePaul University
B.S.N. University of Illinois



SUSAN J. OLSON
Major Applied Research Project Advisor Assistant Professor in the Technical Education Program at the University of Akron, in Akron, Ohio

Ph.D. Pennsylvania State University
M.Ed. Indiana University of Pennsylvania
B.S. Indiana University of Pennsylvania



VESNA OSTERTAG
Central Staff Committee Member Program Professor for the Graduate Teacher Education Program at Nova Southeastern University in Fort Lauderdale, Florida

Ed.D. Nova Southeastern University
M.A. Ball State University
B.A. University of Iowa



CLIFF C. OUDER
Associate Cluster Coordinator for the West Florida Cluster Director of Special Education for the Assumption Parish School System in Napoleonville, Louisiana

Ed.D. University of New Orleans
M.Ed. Southeastern Louisiana University
B.S. Southeastern Louisiana University



Photo not available

KAREN OVERFIELD
Core National Lecturer in Curriculum and Program Planning Lecturer in Business Administration at the Joseph M. Katz Graduate School of Business

Administration in Wexford, Pennsylvania
Ed.D. University of Pittsburgh
M.Ed. University of Pittsburgh
B.S. Carnegie Mellon University



GENE PADGETT
Central Staff Committee Member Program Professor for the Graduate Teacher Education Program at Nova Southeastern University in Fort Lauderdale, Florida

Ed.D. Baylor University
M.A. Mississippi State University
B.S. Mississippi State University



LINDA H. PHILLIPS
Local Research Associate for the Greenwood Cluster Dean of Educational Support Services at Catawba Valley Community College

in Hickory, North Carolina
Ed.D. Nova Southeastern University
M.Ed. University of North Carolina at Charlotte
B.S. Lenoir-Rhyne College



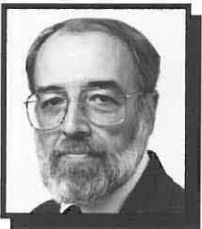
JAMES PIETROVITO
Associate Coordinator of the Massachusetts Cluster Dean of the New Hampshire Technical Institute in Concord, New Hampshire

Ed.D. Vanderbilt University
C.A.G.S. University of Vermont
M.Ed. University of Vermont
A.B. Lycoming College



GARY E. RANKIN
Practicum Evaluator and Core National Lecturer in Research Methodology Vice President of Administration Services and Planning at

Oklahoma City Community College in Oklahoma City, Oklahoma
Ph.D. University of Northern Colorado
M.S. University of Kansas
B.S. University of Kansas



DAVID O. REMINGTON
Major Applied Research Project Advisor Data Research Specialist for the Fischler Center for the Advancement of Education at

Nova Southeastern University in Fort Lauderdale, Florida
Ph.D. The Catholic University of America
B.S. University of Minnesota
B.A. University of Minnesota



DONALD C. RIGG
Major Applied Research Project Consultant to Central Staff Committee Members Educational Consultant in

Plantation, Florida
Ed.D. Nova Southeastern University
M.Ed. University of Florida
B.A. Yale University



VICKI L. RILEY
Core National
Lecturer in
Curriculum and
Program Planning
Assistant Provost,
Community and
Technical College
Fairmont State
College, Fairmont,
West Virginia

Ed.D. University of Virginia
M.A. James Madison University
B.S. James Madison University



CORNELIUS V.
ROBBINS
Major Applied
Research Project
Advisor
Professor at the
State University of
New York in
Albany, New York
Ed.D. University of
Pennsylvania

M.Ed. University of Delaware
B.A. University of Delaware



MICHAEL A.
ROONEY
Coordinator of the
Phoenix Cluster
District Director of
Student
Development
Services of the
Maricopa
Community College

District in Phoenix, Arizona
Ph.D. St. Louis University
M.Ed. University of Hawaii
B.A. Washburn University



MARK H.
ROSSMAN
Major Applied
Research Project
Advisor
Vice President for
Academic Affairs at
the Graduate
School of America
in Minneapolis,
Minnesota

Ed.D. University of Massachusetts
M.S. University of Bridgeport
B.A. New York University



G. JEREMIAH
RYAN
Coordinator of the
Philadelphia Cluster
President, Quincy
College in Quincy,
Massachusetts
Ed.D. Nova
Southeastern
University

M.S. State University of New York
M.A. Stanford University
A.B. Hamilton College



MARTHA M.
SANDERS
Specialization
National Lecturer in
Preparing and
Developing Staff in
the Health Care
Professions of the
Future: A Changing
Educational
Paradigm

Associate Professor of Nursing at Bethel
College in North Newton, Kansas
Ph.D. Kansas State University
M.S. Kansas State University
M.S.N. Clarkson College
B.S. Kansas State University



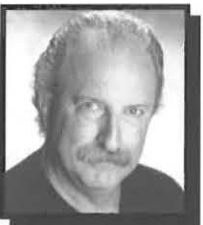
LINDA S.
SCHEIRTON
Specialization
National Lecturer in
Concepts and
Values in Health
Care Education and
Core National
Lecturer in
Curriculum and
Program Planning

Clinical Associate Professor of
Periodontics at Creighton University
School of Dentistry in Omaha, Nebraska
Ph.D. University of Texas at Austin
M.A. University of Texas at San Antonio
B.S. Texas A & I University at Corpus
Christi



CLIFFORD L.
SHISLER
Major Applied
Research Project
Advisor
Director of
Research, Grants,
and Contracts at
Northern Kentucky
University in

Highland Heights, Kentucky
Ph.D. University of South Carolina
M.Ed. University of Arizona
B.F.A. State University of New York



STEVE SIPLET
Central Staff
Committee Member
Assistant Provost for
Student Services for
the Fischler Center
for the
Advancement of
Education at Nova
Southeastern

University in Fort Lauderdale, Florida
Ed.D. Nova Southeastern University
M.Ed. Temple University
Ed.S. Temple University
B.A. Temple University



JO ANN STONE
Coordinator of the
Massachusetts
Cluster
Executive Director
of Self-Concepts in
Morrisville,
Vermont
Ed.D. Nova
Southeastern
University

M.S. Boston University
B.S. Hunter College



STEVEN C.
SWORDER
Research Associate
for the Orange
County Cluster
Professor of
Mathematics at
Saddleback College
in Mission Viejo,
California

Ph.D. University of California
Ed.D. Nova Southeastern University
M.S. University of California
B.S. University of California



H. RALPH TODD,
JR.
Coordinator for the
Bay Area Cluster
Educational
Consultant in Fair
Oaks, California
Ed.D. Nova
Southeastern
University

M.A. Louisiana State University
B.A. Louisiana State University



SUSAN A.
TORBENSON
Coordinator of the
Chicago Cluster
Instructor at St.
Norbert College in
DePere, Wisconsin
Ed.D. Nova
Southeastern
University

M.Ed. University of Hawaii
B.S. University of Wisconsin at La Crosse

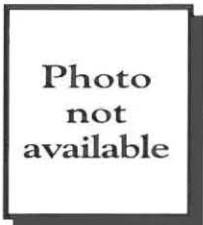


Photo
not
available

TERI J. TRAEEN
Core National
Lecturer in Human
Resources
Development
Director of
Employment at
Paradise Valley
Unified School
District in

Phoenix, Arizona
D.P.A. Arizona State University
Ed.D. Arizona State University
M.A. Wheaton College
B.A. University of Arizona



JAMES R. VALADEZ
Core National Lecturer in Research Methodology Associate Professor, Department of Educational Leadership and

Policy Studies, University of Washington, Seattle, Washington
Ph.D. University of California
M.A. University of California
B.A. University of California



KENNETH E. VARCOE
Practicum Evaluator, Major Applied Research Project Advisor, Core Seminar Coordinator and Core National Lecturer in Societal

Factors Affecting Education, and Specialization National Lecturer in Emergence of Higher Education in America
Assistant Vice President of Commonwealth Educational System at Pennsylvania State University in University Park, Pennsylvania
Ph.D. Southern Illinois University
M.S. Southern Illinois University
B.A. Trenton State College



SALLY A. VERNON
Major Applied Research Project Advisor Educational Consultant for Vernon and Associates in Chicago, Illinois

Ed.D. Teachers College Columbia University
M.A. DePaul University
B.A. DePaul University



RENE E. VILLA
Coordinator of the Tampa Cluster Professor of Psychology at Hillsborough Community College in Tampa, Florida
Ed.D. Nova Southeastern University

M.A. University of New Brunswick
B.A. University of South Florida



JAMES L. WATTENBARGER
Specialization National Lecturer in Emergence of Higher Education in America Retired Director of the Institute of Higher Education

and Distinguished Service Professor Emeritus at the University of Florida in Gainesville, Florida
Ed.D. University of Florida
M.A. University of Florida
B.A. University of Florida

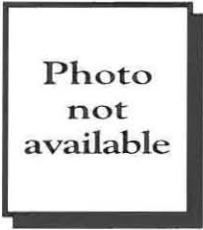


Photo not available

JOZEF V.M. WELIE
Specialization National Lecturer in Concepts and Values in Health Care Education Assistant Professor for the Center for Health Policy and Ethics at Creighton

University in Omaha, Nebraska
Ph.D. Catholic University of Nijmegen, The Netherlands
J.D. University of Limburg, The Netherlands
M.Med.S. University of Maastricht, The Netherlands

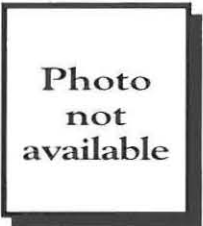


Photo not available

JAMES M. WILBURN, III
Specialization National Lecturer in History, Philosophy, and Practices of Adult Education Managing Partner of James Wilburn Associates in Newark, Delaware

Ed.D. North Carolina State University
M.A. Appalachian State University
A.B. Pfeiffer College



JACK N. WISMER
Core National Lecturer in Governance and Management Vice President of Black Hawk College in Moline, Illinois
Ph.D. University of Denver

M.A. Western Michigan University
B.B.A. Western Michigan University

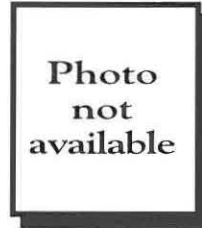


Photo not available

LARA WOLFSON
Core National Lecturer in Research Methodology Assistant Professor of Statistics and Actuarial Science at the University of Waterloo in Waterloo, Ontario
Ph.D. Carnegie Mellon University

M.S. Carnegie Mellon University
B.S. Simon Fraser University, Canada



MARCIA A. WRATCHER
Core National Lecturer in Curriculum and Program Planning Director of Learning Services at Carnegie Mellon University in Pittsburgh, Pennsylvania

Ph.D. University of Pittsburgh
M.S.L. Duquesne University
B.A. Seton Hall College



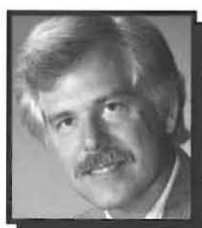
JOHN T. YANTIS
Major Applied Research Project Advisor Professor of Educational Administration at Central Michigan University in Mt. Pleasant, Michigan

Ed.D. University of Wyoming
M.S. Pittsburg State University
B.S. Pittsburg State University



LOIS J. ZACHARY
Practicum Evaluator and Core National Lecturer in Societal Factors Affecting Education Principal of Leadership Development Services in Fayetteville, New York

Ed.D. Columbia University
M.A. Columbia University
M.S.Ed. Southern Illinois University
B.A. State University of New York



DAVID L. ZIERATH
Core National Lecturer in Societal Factors Affecting Education Chairman of the Department of Sociology at the University of Wisconsin in Platteville, Wisconsin

Ph.D. University of Kentucky
M.S. Illinois Institute of Technology
B.A. University of Northern Iowa



OPERATING CLUSTERS
ACCEPTING APPLICATIONS

CLUSTER SITES AND CONTACT PERSONS

Those who are interested in obtaining additional information on the programs described in this catalog may do so by contacting the Programs for Higher Education, Nova Southeastern University, 3301 College Avenue, Fort Lauderdale, Florida 33314-7796, telephone (954) 262-8527 or toll free 800-986-3223, Ext. 8527, fax (954) 262-3903, e-mail: smiley@fcae.nova.edu or the Programs for Higher Education cluster coordinator in their area.

The following is a list of doctoral clusters that are accepting applications for admission. Each cluster is identified by the cluster name and the name, address, and telephone number of the local coordinator or site administrator. These clusters are identified by a corresponding number on the map on page 35.

OPERATING

1. **BAY AREA (CALIFORNIA)**
H. Ralph Todd, Jr., Ed.D.
8124 Rockfield Court
Fair Oaks, CA 95628
(H) (916) 967-2765
E-mail: toddh@fcae.nova.edu
2. **CHICAGO**
Susan Torbenson, Ed.D.
2471 Decker Avenue
Green Bay, WI 54302
(H) (414) 469-9047
E-mail: torbenso@fcae.nova.edu
3. **DALLAS**
Anita G. Barrett, Ph.D.
8453 Mary's Creek Drive
Fort Worth, TX 76116
(H) (817) 244-3309
(evenings and weekends only)
(B) (817) 531-4509
E-mail: barretta@fcae.nova.edu
4. **GREENWOOD**
John A. Morgan, Jr., Ed.D.
101 Hawthorne Court
Greenwood, SC 29646
(H) (803) 229-7742
(B) (803) 223-9442
Fax: (803) 941-8555
E-mail: morganj@fcae.nova.edu
5. **INTERNATIONAL CLUSTER**
Marian Gibney, Ed.D.
9049 North 29th Street
Phoenix, AZ 85028
(H) (602) 867-4771
E-mail: gibneym@fcae.nova.edu
This cluster serves all students not enrolled in a local cluster.
6. **L.A. NORTH**
Richard Harris, Ed.D.
c/o The Master's College
P.O. Box 221450
Newhall, CA 91322-1450
(B) (805) 259-3540, Ext. 216
Fax: (805) 254-1998
E-mail: harrisc@fcae.nova.edu
7. **MASSACHUSETTS**
JoAnn Stone, Ed.D.
RR# 1, Box 6120
Morrisville, VT 05661
(H) (802) 888-7114
E-mail: stonej@fcae.nova.edu
8. **ORANGE COUNTY**
Donald Busche, Ed.D.
Saddleback College
28000 Marguerite Parkway
Mission Viejo, CA 92692
(B) (714) 582-4623
E-mail: busched@fcae.nova.edu
9. **PHILADELPHIA**
G. Jeremiah Ryan, Ed.D.
2504 Lineham Court
Virginia Beach, VA 23454
(H) (410) 939-5926
(B) (410) 836-4407
Fax: (410) 836-4197
E-mail: ryanj@fcae.nova.edu

10. PHOENIX

Michael A. Rooney, Ph.D.
8601 North Black Canyon Highway
Suite 117
Phoenix, AZ 85021
(H) (602) 839-8276
(evenings until 9:00 p.m.)
Fax: (602) 731-8111
E-mail: rooneym@fcae.nova.edu

11. RICHMOND

Richard E. Hoehlein, Ed.D.
2504 Linehan Court
Virginia Beach, VA 23454
(B) (757) 366-9622
(H) (804) 496-3721
Fax (757) 496-5985
E-mail: hoehr@fcae.nova.edu

12. SOUTH FLORIDA

Linda Lopez, Ed.D.
1151 SW 108 Way
Davie, FL 33324
(H) (954) 424-3935
Fax: (954) 424-3170
Voice Mail: (954) 497-7309
E-mail: lopez@fcae.nova.edu

13. SPRINGFIELD

Pansy Collins, Ph.D.
Evangel College
Humanities
1111 North Glenstone
Springfield, MO 65802
(H) (417) 865-2815, Ext. 7338
E-mail collinsp@fcae.nova.edu

14. TAMPA

Rene E. Villa, Ed.D.
8205 N. Fremont Avenue
Tampa, FL 33604
(H) (813) 931-1974
E-mail: villar@fcae.nova.edu

15. TWIN CITIES

Marilyn R. Buckingham, Ph.D.
13225 Oakland Drive
Burnsville, MN 55337
(H) (612) 890-7741
(W) (612) 450-8656
Fax: (612) 450-8679
E-mail: mbuckin@ih.cc.mn.us

16. WAUSAU

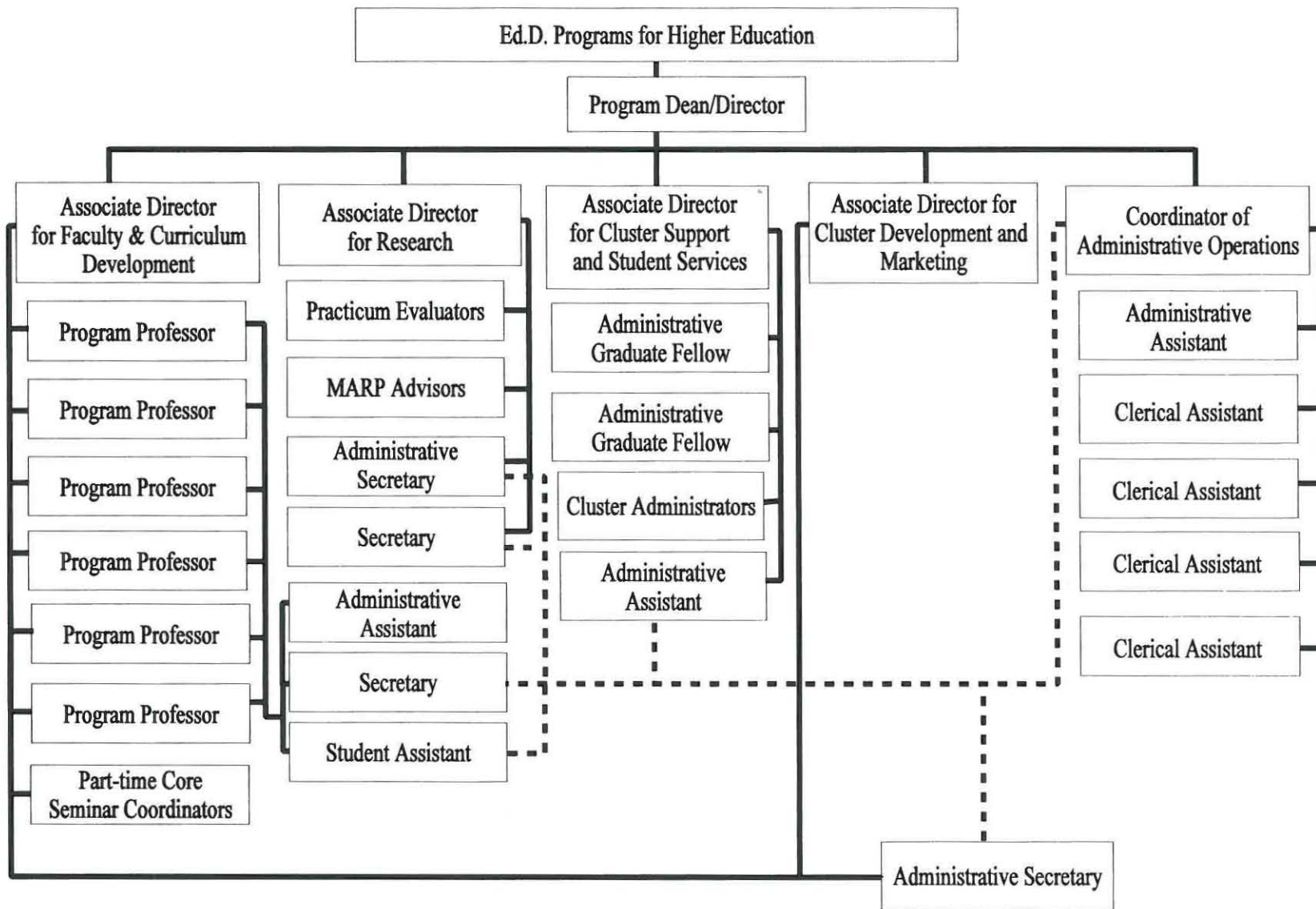
Mary-Louise Holloway, Ph.D.
2050 Winter Cress Drive
Green Bay, WI 54313
(H) (414) 490-9513
(W) (414) 498-5480
Fax: (414) 498-5673
Email: Marylou ? Holloway
@mail.northeast.tec.wi.us

17. WEST FLORIDA

Stephen G. McLeod, Ed.D.
1313 Wisteria Avenue
Pensacola, FL 32507
(H) (904) 456-2631
E-mail: mcleods@fcae.nova.edu

18. WESTERN PENNSYLVANIA

Paula A. Calabrese, Ph.D.
631 Fifth Street
Oakmont, PA 15139-1505
(H) (412) 820-9660
(B) (412) 487-6242
E-mail: calabre@nauticom.net



ORGANIZATIONAL CHART

LEARNING RESOURCES

Library Resources

The Albert and Birdie Einstein Library, located in the Parker Building, houses the University's major collection of books and journals in the humanities, business, education and the sciences. More than 35 specialized indexes in CD-ROM format are available in-house, and an additional 70 databases, many full text, are available via the Internet and campus network. The Nova Southeastern University Libraries's online catalog (NovaCat) is accessible for remote searching, as well as searching catalogs from other university libraries.

The Einstein Library is a member of SEFLIN and FILL, cooperative library networks that provide quick access to library materials throughout Florida. The library also has lending agreements with large research libraries in the Midwest, which provide priority document delivery services to students. The Einstein Library is a cooperating library of the Foundation Center in New York, giving students access to collections for grants and foundation research.

Distance education students have access to books, journal articles, microfiche, dissertations, index searches, catalog searches, and to reference librarians. Librarians travel to class sites to teach students at a distance from the campus. Distance students can request library materials using fax, mail, or computer. To contact Distance Library Services by phone call 800-541-6682, Ext. 4602, or (954) 262-4602. Use the toll free fax to order library materials at: 888-DLS-DOCS or 888-357-3627. Contact DLS by Internet: library@nsu.nova.edu or by Web: <http://www.nova.edu/library>

The Health Professions Division Library is located on the Main Campus. The library is a member of DOCLINE, which is the National Library of Medicine's online, interlibrary loan service, coordinating with medical libraries in the United States. Full membership in the Miami Health Sciences Library Consortium permits free exchange of materials among local medical libraries for all patrons. Membership

in the Association of Visual Sciences Librarians includes a cooperative lending relationship, so patrons have free access to nearly all vision-related resources. Also, a Drug Information Center, based in the College of Pharmacy Building, is available for student use evenings and Saturdays.

The Law Library of the Shepard Broad Law Center, contains the standard materials required for legal study and research. It is one of the few collections in the country designated as a depository for United Nations documents. It is also designated as a depository for state and federal documents.

The William Springer Richardson Library, at the Oceanographic Center, houses a specialized collection of books and periodicals in physical, biological, geological, and chemical oceanography.

The University School Media Center maintains an integrated collection of print and nonprint materials designed to provide curriculum enrichment resources for students from preschool through high school.

Information Technology

The Office of Information Technology and Media Services (OIT) provides the University community with technological resources and support to complement teaching, learning, research, and outreach, as well as to serve administrative operations. OIT consists of the departments of:

- Systems and Computing Services
- Network Services
- Telecommunication Services
- User Services
- Educational Technology
- Media Services

Systems and Computing Services supports the Administrative and Academic computer technologies for students, faculty and staff with a variety of hardware and software systems. Several mid-range computer systems, from Digital Corporation, Hewlett-Packard, and Sun Microsystems, provide a modern network computer environment. Systems and Computing services develops and maintains custom computer applications to meet the information needs of the University.

Network Services plans, designs, implements, and manages state-of-the-art data networks on all campuses. Local area networking is supported via fiber-optic networks, digital phone lines, and high-speed dial-up modems. Worldwide networking is supported via AT&T information access service and a T-1 connection to the Internet.

Telecommunications Services provides local and long distance telecommunication for voice, video, and data connectivity. User Services provides the hardware and software resources in a Microcomputer Lab environment for faculty and students based on applied and emerging technologies.

The labs are conveniently located on the Main Campus and East Campus, including the Leo Goodwin Residence Hall. The Collaboration and Decision Support Lab has been established at the East Campus. The User Services facilities are available to all currently enrolled NSU students. An Open Lab is maintained seven days a week, with lab monitors available to assist students with hardware and software problems.

The multi-lab design of the User Services and the variety of computer systems provide the flexibility to support student and faculty needs in structured class and Open Lab. Available computer systems include MS-DOS, Windows, OS/2, Macintosh, SunOS, and Ultrix. Peripherals such as CD-ROMs, scanners, touch screens, and laser disc players are also located in the labs. The extensive software collection provided for students and faculty ranges from educational application programs to the most sophisticated business applications. Multimedia work stations are also available.

All labs are networked to the University's online computer systems. The online connectivity provides student and faculty access to applications software, electronic mail, the electronic classroom, the Campus-Wide Information System, and the Internet. In addition, User Services provides daily telephone and online help desk functions for faculty, students, and staff.

Educational Technology services is responsible for the Internet and World Wide Web (WWW) resources throughout the University. Custom programming and WWW development are completed utilizing the latest Internet strategies and resources.

Media Services provides faculty, students, and staff at all Nova Southeastern University locations with instructional tools, develops and produces instructional media, assists faculty in the development of instructional media, and provides consultation on media selection and the effective use of technology.

Media Services staff is dedicated to helping clients overcome personal, psychological, social, and geographic barriers to learning through technology, particularly in the use of full, two-way videoconferencing in distance education.

A fully-equipped video production studio provides service to NSU academic and support centers. In addition to video production, Media Services circulates videotapes and other instructional resources to faculty from an extensive in-house catalog, as well as from other universities and commercial rental sources. Other services offered include:

- Teleconference downlinking
- Equipment scheduling and circulation
- Copyright clearance
- Photography
- Digital film-to-slide production
- Video and audio duplication

Student Access to Telecommunications

Graduate Programs at FCAE expect or require their field-based faculty, staff, and students to avail themselves of the University's electronic resources. NSU's UNIX system enables users to communicate with others in their program through electronic mail (e-mail), request university electronic library services, participate in electronic classroom course experiences (when scheduled), discuss issues in computer conferences, and access worldwide resources including; practitioners, bulletin boards, library catalogs, full-text material, databases, the Internet, and the World Wide Web.

To get online, students need an MS-DOS compatible or Macintosh* computer, VT100 terminal emulation software (Kermit is provided by NSU), and a 14,400 baud ** or faster modem (or Telnet capability) for connection to NSU over local telephone lines.

Students are provided NSU UNIX accounts; however, students may have to pay an access fee to reach the Internet to connect to NSU resources.

To be assigned an account on the UNIX system, students need to complete a Request for UNIX Account form, which is available from their program office or located in the Application and Admission Packet section in the back of this catalog. After the form is processed by the user's program, The Fischler Center's Office of Technology will provide account information.

For information about the system's capabilities or answers to technical questions, call the NSU general communications Helpdesk at 800-541-6682, Ext. 4357 or (954) 262-4357. Your call will be transferred to the Helpdesk and handled by the staff member on duty. E-mail: help@nsu.nova.edu
<http://www.nova.edu/help>

*Limited Macintosh Support is available from NSU.

**Modems as slow as 2400 baud may be used.

Telecommunications Policy

New students admitted for the fall 1996 term and later must be able to demonstrate to program officials that they have access to a computer and modem at home or work, in order to be admitted to the program. In addition, they must apply for and utilize an NSU UNIX electronic telecommunication account in order to remain in good standing.

Current students are strongly encouraged to acquire electronic telecommunication accounts as soon as possible, but not later than the Fall of 1996. While the program will not require this of current students, the increased use of telecommunications within the program will place those not involved at a disadvantage. All students will benefit from the speed of communications, the wider access to each other and to information in NSU's electronic library, and the Internet, that becomes available when one is "online."

All PHE central staff, faculty, cluster staff, evaluators, and advisors have been required, since July 1, 1996, to have computer and modem access at work or home, and have active electronic telecommunication accounts.

AEDNET

The Adult Education Network (AEDNET) is an international electronic network. The network is operated through a *listserv* that enables subscribers to share information. Researchers, practitioners, and graduate students in adult and continuing education are provided with opportunities to discuss important topics and concerns in an online environment.

AEDNET activities include network-wide discussions, information exchanges on topics and queries, and announcement of jobs, conferences, special events, and publications. The network also serves in the dissemination of the electronic journal, *New Horizons in Adult Education*.

New Horizons in Adult Education

This publication, founded in 1987, is an electronic journal focused on current research and ideas in adult education. It is a refereed journal that is published two or three times each year. The journal provides graduate students, faculty, researchers, and adult education practitioners with a means for publishing their most-current thinking and research within adult education and related fields. The journal is transmitted to subscribers around the world at no fee through the electronic network of AEDNET. The contents of the journal are indexed in the Educational Resources Information Center (ERIC) database. Articles may be submitted to *New Horizons in Adult Education* in a variety of disk formats through regular mail or electronically through AEDNET. The editorial staff also will accept conventional paper copies for review, so that important contributions to adult education may be published.

Textbooks

The bookstore (Nova Books) is located on the Main Campus in the Rosenthal Student Center and carries all the required books for courses at Nova Southeastern University. Students located throughout the United States and Canada can order their texts via telephone: (954) 262-4750, 800-509-2665, or fax (954) 262-4759.

E-mail: novabook@nsu.nova.edu

POLICIES GOVERNING STUDENT RELATIONS

General

Nova Southeastern University has established specific policies, procedures, and guidelines defining its relationship with its students. The term student as used in this catalog defines the student or parents of the student if the student qualifies as a dependent under the provisions of the Internal Revenue Code.

Institutional and Academic Information

NSU and its composite academic units periodically publish bulletins or catalogs describing the University and its academic programs. These bulletins are available to enrolled and prospective students through the various admissions offices associated with the academic units or from the Office of the University Registrar. Each academic unit, group of units, and/or the Office of the University Registrar maintains at least one full-time employee to assist all students in obtaining information.

Notice of Nondiscrimination

Nova Southeastern University admits students of any race, color, sex, age, nondisqualifying disability, religion or creed, or national or ethnic origin to all the rights, privileges, programs, and activities generally accorded or made available to students at the school, and does not discriminate in administration of its educational policies, admissions policies, scholarship and loan programs, and athletic and other school-administered programs.

The Office of the University Registrar is designated as the policy coordinator to assure compliance with all federal, state, and local laws and regulations relative to nondiscrimination.

Grievances

When questions about procedures, decisions, or judgments occur, counseling is available for discussion and resolution of differences. Students may also have recourse to more formal avenues of appeal and redress. Grievance procedures are explained in the *PHE Manual of Policies and Procedures for Students*.

Student Publications

Nova Southeastern University, as publisher, bears the legal responsibility for the contents of student publications. In the delegation of editorial responsibility to students, the University provides sufficient editorial freedom for the student publications to maintain their integrity of purpose as vehicles of free inquiry and free expression in the Nova Southeastern University academic community.

The delegated editorial freedom of student editors and managers is subject to corollary responsibilities to be governed by the canons of responsible journalism, such as the avoidance of libel, indecency, undocumented allegations, attacks on personal integrity, and the techniques of harassment and innuendo.

As safeguards for the delegated editorial freedom of student publications, the following provisions are made:

1. The student press shall be free of censorship and advance approval of copy, and its editors and managers shall be free to develop their own editorial policies and news coverage.
2. Editors and managers of student publications shall be protected from arbitrary suspension and removal because of student, faculty, administrative, or public disapproval of editorial policy or content. Only for proper and stated causes shall editors and managers be subject to removal, and then by orderly and prescribed procedures.
3. All University published and financed student publications shall explicitly state on the editorial page that the opinions therein expressed are not necessarily those of Nova Southeastern University or of the student body.

Student Participation in University Governance

In furtherance of its commitment to teaching and learning, Nova Southeastern University encourages student participation in institutional decision making.

Within each center, elected student government bodies provide vehicles for student expression of views and opinions on issues of institutional policy. Officers of the student governments are members of the President's Student Advisory Committee which meets monthly with the President and appropriate senior administrative staff to discuss University matters of general interest to the student body.

Additionally, students are regularly appointed to committees, task forces, and ad hoc groups dealing with issues of concern to students, including appointment to each self study subcommittee.

THE CODE OF STUDENT CONDUCT AND ACADEMIC RESPONSIBILITY

Purpose: This code seeks to promote high standards of academic integrity by setting forth the responsibilities of students as members of the University community. Abiding by the code ensures a climate wherein all members of the University community can exercise their rights of membership.

Nova Southeastern University Statement of Academic Rights and Responsibilities

Nova Southeastern University, as a community of women and men, is committed to furthering scholarship, academic pursuits, and service to our society. As an institution, our purpose is to assure all students an equal opportunity to fulfill their intellectual potential through pursuit of the highest standards of academic excellence.

Certain rights and obligations flow from membership in any academic community committed to such goals:

- The rights of personal and intellectual freedom, which are fundamental to the idea of a university;
- A scrupulous respect for the equal rights and dignity of others; and
- Dedication to the scholarly and educational purposes of the University and participation in promoting and assuring the academic quality and credibility of the institution.

Students are responsible for obtaining, learning, and observing the established University and center policies as listed in all official publications. In addition, students must comply with the legal and ethical standards of the institution as well as those of Broward County and the State of Florida. All members of the community should inform the appropriate official of any violation of conduct regulations.

A. Academic Standards

The University expects its students to manifest a commitment to academic integrity through rigid observance of standards for academic honesty. The academic honesty standards include:

1. **Original Work.** Assignments such as course preparations, exams, texts, projects, term papers, practicums, etc., must be the original work of the student. Original work may include the thoughts and words of another author, but if that is the case, those ideas or words must be indicated in a manner consistent with a University-recognized form and style manual.

Work is not original that has been submitted previously by the author or by anyone else for academic credit. Work is not original that has been copied or partially copied from any other source,

including another student, unless such copying is acknowledged by the person submitting the work for the credit at the time the work is being submitted or unless copying, sharing, or joint authorship is an express part of the assignment. Exams and tests are original work when no unauthorized aid is given, received, or used prior to or during the course of the examination.

2. Referencing the Works of Another

Author. All academic work submitted for credit or as partial fulfillment of course requirements must adhere to each center's specific accepted reference manuals and rules of documentation. Standards of scholarship require that proper acknowledgment be given by the writer when the thoughts and words of another author are used. Students must acquire a style manual approved by their center and become familiar with accepted scholarly and editorial practice in their program. Students' work must comport with the adopted citation manual for their particular center.

At Nova Southeastern University, it is plagiarism to represent another person's work, words, or ideas as one's own without use of a center-recognized method of citation. Deviating from center standards (A) (1) or (A) (2) is considered plagiarism at Nova Southeastern University.

3. Tendering of Information. All academic work must be the original work of the student. Giving or allowing one's work to be copied, giving out exam questions or answers, or releasing or selling term papers is prohibited.

4. Acts Prohibited. Students should avoid any impropriety, or the appearance thereof, in taking examinations or completing work in pursuance of their educational goals.

Violations of academic responsibility include, but are not limited to:

- a. Plagiarism;
- b. Any form of cheating;

- c. Conspiracy to commit academic dishonesty;
- d. Misrepresentation;
- e. Bribery in an attempt to gain an academic advantage;
- f. Forging or altering documents or credentials; and
- g. Knowingly furnishing false information to the institution.

5. Additional Matters of Ethical Concern.

Where circumstances are such as to place students in positions of power over University personnel, inside or outside the institution, students should avoid any reasonable suspicion that they have used that power for personal benefit or in a capricious manner.

B. Conduct Standards

1. Students should not interfere with the rights, safety, or health of members of the University community nor interfere with other students' right to learn. Students are expected to abide by all University, center, and program rules and regulations and all local, state, and federal laws. Violations of conduct standards include, but are not limited to:
 - a. Theft;
 - b. Vandalism;
 - c. Disruptive behavior;
 - d. Possession or use of firearms, fireworks, explosives, or other dangerous substances or items;
 - e. Possession, transfer, sale, or use of illicit drugs;
 - f. Appearance in class or on campus under the apparent influence of alcohol or illicit drugs or chemicals;
 - g. Violations of housing regulations;
 - h. Any act or conspiracy to commit an act which is harassing or abusive or which invades an individual's right to privacy, including, but not limited to, sexual harassment and abuse against members of a particular racial, ethnic, religious, or cultural group;
 - i. Threats of or actual damage to property or physical harm to others;

- j. Nova Southeastern University prohibits any activity that may be construed as hazing (“hazing” is defined as: any action or situation which recklessly or intentionally endangers the mental or physical health or safety of a student for the purpose of initiation or admission into or affiliation with any organization operating under the sanction of a university); and
 - k. Failure to pay tuition and fees in a timely manner.
2. Students must have authorization from the University to have access to University documents, data, programs, and other types of information and information systems. Any use of the above without authorization is prohibited.

C. Supplementary Standards

Students are expected to comply with the legal and ethical standards of this institution and those of their chosen field of study, including the code of ethics for computer usage. The University and each center or program may prescribe additional standards for student conduct as would comport with the letter and spirit of this code.

D. Violations

Any violation(s) of any of the academic standards, conduct standards, or supplemental standards may result in a complaint being filed against a student to enforce the Code of Student Conduct and Academic Responsibility. Deans or directors may, in their discretion, immediately suspend students pending a hearing on charges of academic conduct or supplemental standard violations. Any student found guilty of a violation of the academic, conduct, or supplemental standards will be subject to disciplinary action, including expulsion from the University.

Student Code of Computer Ethics

Student users of Nova Southeastern University’s computer systems are subject to all applicable federal, state, and international computer laws. A copy of the Florida Computer Crimes Act and referenced Florida State Statutes may be examined online or in a student’s academic program office.

Nova Southeastern University provides computer systems with access to hardware, software, and networks to enhance academic experience. Ethical conduct by students in the use of this technology is the same as in all other areas of University life and it is of equal importance. All students are expected to abide by the Nova Southeastern University Code of Student Conduct and Academic Responsibility.

For more detailed information on Nova Southeastern’s Student Code of Computer Ethics, please consult the *PHE Manual of Policies and Procedures for Students*.

Drug-Free Schools and Campuses

In order to comply with the Drug-Free Schools and Communities Act (Pub. L. No. 101-226, Title 34 C.F.R., part 86), Nova Southeastern University has adopted the following policy for all workplace, school, campus, and field-based programs.

The unlawful manufacture, distribution, dispensation, possession, or use of illicit drugs and the abuse of alcohol are prohibited in and on Nova Southeastern University owned or controlled property and as a part of any of its activities. No Nova Southeastern University employee or student is to report to work or school while under the influence of illicit drugs or alcohol.

For more detailed information on this policy, please consult the program’s *PHE Manual of Policies and Procedures for Students*.

Privacy of Records

Nova Southeastern University maintains a system of records that includes application forms, admission test scores, and transcripts of students' previous academic records and performance while in residence. These records are available for review by present and former students upon written request to the Office of the University Registrar. However, the registrar will not release transcripts of students' academic records until all accounts, both academic and nonacademic, have been paid.

The law limits access by and disclosure to a third party. Such access is given only upon consent of the student or if required by law, except for the following information, which may be released as directory information: (a) student's name, (b) dates of attendance, (c) degree and awards received. Requests for such information must be submitted in writing to the University. The University reserves the right to refuse the above information if the reason for the request is not considered to be a sufficient need to know.

Any student or parent not wishing to have this information disclosed should notify the Office of the University Registrar in writing prior to September 1 of the relevant school year.

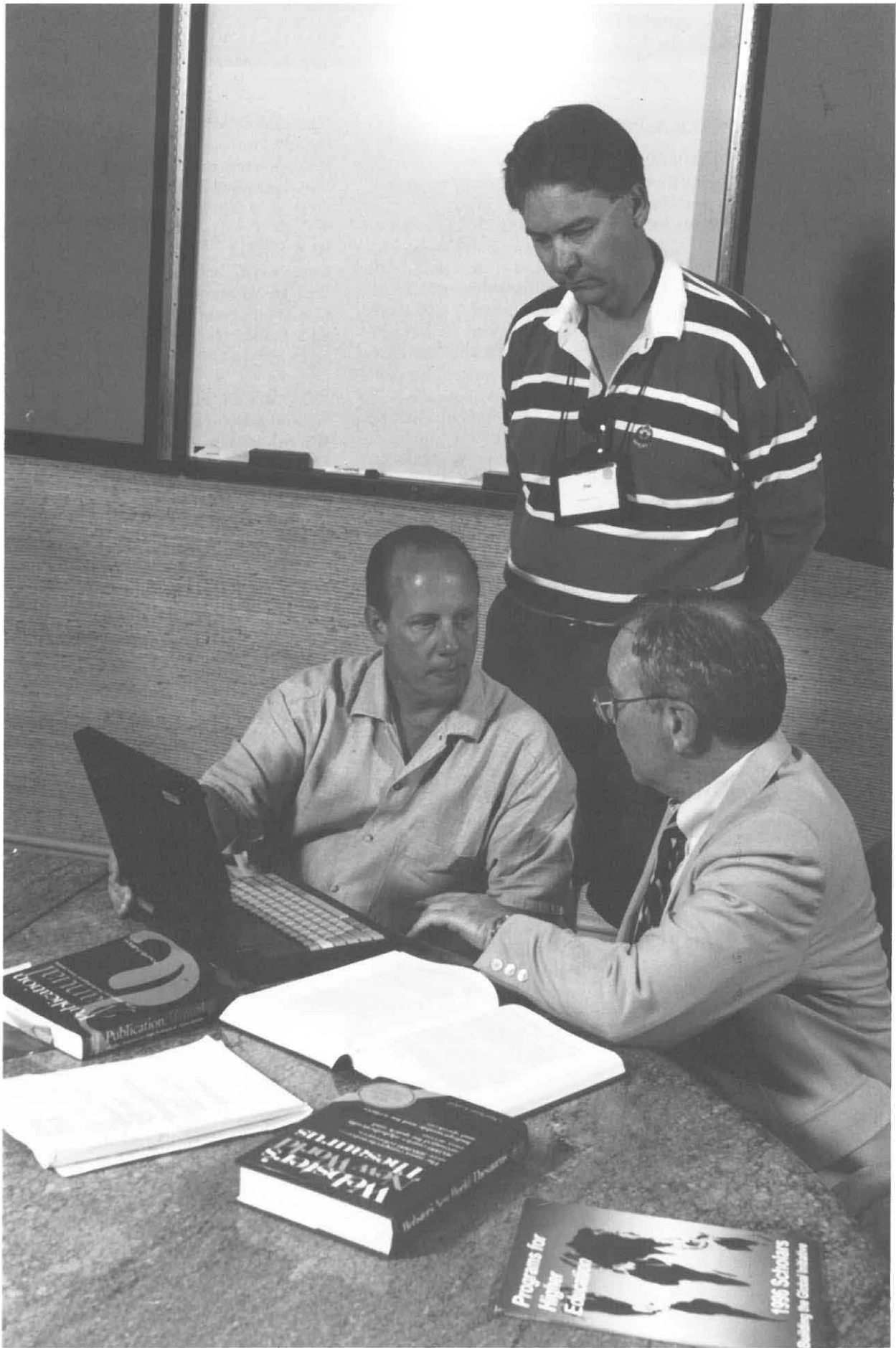
A person does not have the right of access to educational records until he or she has been admitted to and has actually begun attending Nova Southeastern University. There is no prohibition from disclosing such information to the parents of students who are listed on their parents' federal income tax forms.

Parents or eligible students will be provided a hearing by the University if they wish to challenge the content of the record. If they are still not satisfied, the parents or eligible students may add explanatory or rebuttal matter to the record.

If the students or parents are denied access to a hearing or if the records are alleged to have been illegally disclosed to a third party, the students or parents may file a complaint with the U.S. Department of Education.

Reservation of Power

Nova Southeastern University reserves the right to amend, modify, add to, or delete its rules, policies, and procedures affecting its institutional relationship with students as deemed necessary by the administration. Any such amendment, modification, addition, or deletion shall not be considered a violation of the relationship between the University and the student. Such right includes modification to academic requirements, curriculum, tuition, and/or fees when in the judgment of the administration such changes are required in the exercise of its educational responsibility.



CENTER FACULTY AND ADMINISTRATIVE STAFF

CENTER ADMINISTRATION

MOHAMMED ALLAM

PC Applications Programmer
B.S. Cairo University
M.S. Nova Southeastern University

WILLIAM ALVAREZ

Program Professor/Director of Leadership
Development and Proficiency Program
B.S. Lamar State College of Technology
M.S.E. Stephen F. Austin State University
Ed.D. University of Arkansas

CAROLE BENEDICT

Coordinator of Center Marketing

BRIAN CROSWHITE

Director of Marketing
B.A. University of Alabama at Birmingham

LINDA EADS

Executive Director, FCAE/Dade County Board
of Education
B.Ed. University of Miami
M.A. University of Northern Colorado
Ed.D. Nova Southeastern University

STEWART EDGERTON

Network Support Specialist
B.S. Nova Southeastern University

ABRAHAM S. FISCHLER

President Emeritus, Nova Southeastern University
B.S. City College of the City University
of New York
M.S. New York University
Ed.D. Columbia University

RICHARD GOLDMAN

Distinguished University Program Professor
of Education
B.A. University of Pittsburgh
M.Ed. University of Pittsburgh
Ph.D. University of Pittsburgh

CHRISTINE L. KEENA

Center Coordinator for Human Resources
B.S. Nova Southeastern University
M.B.A. Nova Southeastern University

ROCKY LOIACONO

Manager of Network and Software Services
B.S. Nova Southeastern University
M.S. Nova Southeastern University

MICHELE D. McGUIRE

Program Professor
B.S. University of Rhode Island
M.A. University of Alabama at Birmingham
Ph.D. University of Kansas

AL P. MIZELL

Director of Technology
B.Ed. University of Miami
M.S. Florida State University
Ed.S. Indiana University
Ed.D. Indiana University

HOA "WALLY" NGUYEN

Network Support Specialist
B.S. Nova Southeastern University
M.S. Nova Southeastern University

PHYLLIS M. OLMSTEAD

Academic Computing Specialist
A.A. Hillsboro Community College
B.S. University of Florida
M.Ed. University of Central Florida
Ed.D. University of Central Florida

DAVID O. REMINGTON

Data Research Specialist
B.A.E. University of Minnesota
B.S. University of Minnesota
Ph.D. Catholic University of America

REGINA SCHAWAROCH

Admissions Supervisor
B.S. Nova Southeastern University

H. WELLS SINGLETON

Education Provost and Dean
B.A. University of Wyoming
M.A. Southern Methodist University
Ph.D. Stanford University

STEPHEN I. SIPLET

Associate Provost for Student Services
B.A. Temple University
M.Ed. Temple University
Ed.S. Temple University
Ed.D. Nova Southeastern University

MARTHA SMITH-SINGLETON

Director of NSU Liaison Activities
B.S. Sam Houston State University
M.A. University of Wyoming
Ed.S. University of Wyoming
Ed.D. University of Wyoming

LINDA SWAILS

Director of Administrative Operations

DEBORAH WASSERMAN-SCHULTZ
Public Policy Curriculum Specialist
B.A. University of Florida
M.A. University of Florida

PROGRAMS IN EDUCATION AND TECHNOLOGY

HECTOR BARAJAS
Coordinator of Curriculum Development
A.G.S. Central Texas College

CLEVELAND O. CLARKE
Program Professor
B.S. Pennsylvania State University
M.Ed. Boston University
Ed.D. Boston University

PHILIP DUCHASTEL
Program Professor
B.A. University of Montreal
M.Sc. Florida State University
Ph.D. Florida State University

SUE FASSANELLA
Coordinator of Administrative Operations

VERA FLIGHT
Director of Student Development and Admissions
B.S. Eastern Connecticut State University
M.S. Nova Southeastern University

ROBERT K. GREENE
Practicum Associate
Managing Editor, *The Child and Youth Care Leader*
B.A. Florida Atlantic University

LOIS ANN HESSER
Program Professor
B.S. State University of New York at Potsdam
M.S. State University of New York at Potsdam
Ed.D. State University of New York at Albany

JAIME LOPEZ
Technology Support Specialist, *The Online Chronicle of Distance Education*
B.S. Nova Southeastern University

MARY ELLEN MAHER
Associate Director
B.A. Jersey City State College
M.Ed. University of Florida
Ph.D. University of Florida

ABBEY MANBURG
Program Dean
A.B. Temple University
M.S. City College of New York
Ed.D. Nova Southeastern University

JOAN M. MIGNEREY
Program Professor
B.S. Defiance College
M.S. Bowling Green State University
Ph.D. Michigan State University

GINA PEYTON
Acting Coordinator of Curriculum Development
B.S. Nova Southeastern University

MARY ELLEN SAPP
Director of Practicums
B.Ed. University of Miami
M.Ed. Florida Atlantic University
Ph.D. The Ohio State University

KENNETH TEWEL
Program Professor
B.A. Queens College
Ph.D. Union Institute

NOREEN WEBBER
Program Professor
A.B. Emmanuel College
M.Ed. Boston State College
M.S.W. Boston College of Social Work
Ph.D. Nova Southeastern University

LABONTE INSTITUTE FOR COMMUNICATION SCIENCES AND DISORDERS

JOSEPH BARIMO
Director of Business Services
M.B.A. Tampa College
M.S. University of South Florida

CELIA BARREIRO
Clinical Supervisor
B.S. Arizona State University
M.S. Nova Southeastern University

DONALD BENDER
Associate Director
B.A. Paterson University
M.A. Seton Hall University
Ph.D. University of Maryland

ELAINE S. BLOOM
Coordinator of Student Services
B.S. Emerson College
M.S. Emerson College

TERESA J. BUTTERWECK
Clinical Supervisor
B.A. Keuka College
M.S. Nova Southeastern University

BARRY FREEMAN
Program Dean
B.S. Boston University
M.S. Boston University
Ph.D. Michigan State University

ELANE FRIEDEL
Clinical Audiologist/Coordinator of Internships
B.S. Emory University
M.S. Emory University

GARY FRIEDMAN
Clinical Audiologist
B.A. State University of New York at Buffalo
M.S. Washington University

JOSEPH GONZALEZ
Program Professor
B.A. University of Florida
M.A. University of Florida
Ph.D. Florida State University

TERI A. HAMILL
Program Professor
B.A. University of Central Florida
M.S. Florida State University
Ph.D. Florida State University

BRIAN D. HUMPHREY
Clinical Supervisor
B.A. University of Rochester
M.A. University of Minnesota

SHELLEY KIRCHENBAUM
Clinical Supervisor
B.A. Adelphi University
M.A. George Washington University

THOMAS G. McOSKER
Clinical Supervisor
B.A. College of the Holy Cross
M.A. Case Western Reserve University

WREN NEWMAN
Coordinator of Client Services
B.S. Ithaca College
M.S. University of Oklahoma

BARBARA PACKER
Director of Doctoral Studies and Program Professor
B.A. Rutgers University
M.S. Columbia University
Ed.D. Nova Southeastern University

ROBIN PARKER
Clinical Supervisor
B.S. Florida State University
M.S. Florida State University

RHODA PILELSKY
Clinical Supervisor
B.A. Boston University
M.S. Northwestern University

ELIZABETH ROBERTS
Program Professor, Speech Language Pathology
B.A. Henderson State University
M.S.E. University of Central Arkansas
Ph.D. University of Southern Mississippi

MARILYN RUSSO
Coordinator, Insurance/Billing

ELIZABETH E. SPERRY
Program Professor, Speech-Language Pathology
B.S. Kent State University
M.A. Kent State University
Sc.D. Boston University

SHELLEY VICTOR
Associate Director and Program Professor
B.A. State University of New York at Stony Brook
M.A. University of Miami
Ed.D. Nova Southeastern University

KRISTY S.E. WEISSLING
Internship Supervisor/Clinical Supervisor
B.S. University of Nebraska-Lincoln
M.S. University of Nebraska-Lincoln

CAROLE ZANGARI
Coordinator of Research and Program Professor
B.A. University of Pittsburgh
M.Ed. Trenton State College
Ph.D. Purdue University

BARBARA ZUCKER
Clinical Supervisor
B.S. Miami University
M.A. Kent State University

MASTER'S PROGRAM IN LIFE SPAN CARE AND ADMINISTRATION

JUDITH BARTMANN
Program Professor and Practicum Advisor, Elder
Care Administration
B.S. Colorado State University
M.A. University of Northern Colorado
Ph.D. University of Northern Colorado

ADELA BECKERMAN
Program Professor and Director of Practicums
B.S. State University of New York at Stony Brook
M.S.W. State University of New York
at Stony Brook
Ph.D. State University of New York at Albany

RALPH HOGGES
Program Professor and Associate Director
B.S. Tuskegee University
M.Ed. Tuskegee University
Ed.D. Nova Southeastern University

KATE HOWZE

Program Professor and Practicum Advisor, Early
Childhood Education Administration
B.S. The Ohio State University
M.S. Nova Southeastern University
Ed.D. Nova Southeastern University

NORMAN W. POWELL, JR.

Program Dean
B.A. The American University
M.Ed. The American University
Ed.D. The American University

VICKY ZAETLER

Coordinator of Administrative Operations

NATIONAL ED.D. PROGRAM FOR EDUCATIONAL LEADERS

NEDRA BORDERS

Coordinator of Program Marketing
B.S. Nova Southeastern University

PHILIP H. DeTURK

Program Professor
B.A. Dartmouth College
M.A. Columbia Teachers College
Ed.D. University of Massachusetts

CHARLES L. FAIRES

Program Dean
B.S. Northern Arizona University
M.S. University of Georgia
Ph.D. Kent State University

KATHRYN G. HOLLYWOOD

Program Professor
B.A. St. John's University
M.A. St. John's University
M.A. St. John's University
P.D. Fordham University
Ph.D. Fordham University

MOISETTE HORNBROOK

Coordinator of Administrative Operations

SUZANNE PADGETT

Coordinator of Instructional Materials

SHARON SANTILLI

Program Professor
B.S. University of Massachusetts
M.Ed. University of Massachusetts
Ed.D. University of Massachusetts

EDNA SUAREZ-COLUMBA

Program Professor
B.S. Oswego State University
M.P.H.E. University of Puerto Rico
Ed.D. Nova Southeastern University

GRADUATE TEACHER EDUCATION PROGRAM

JOANNE ACOSTA

Assistant to the Program Dean
B.A. University of Miami

PAUL B. BORTHWICK, JR.

Program Professor
B.S. Kent State University
M.S. University of Akron
Ph.D. University of Akron

COREY BRUNISHOLZ

Coordinator, Computer Support
B.S. Nova Southeastern University
M.S. Nova Southeastern University

BARBARA COMER

Academic Advisor
B.S. State University of New York at Buffalo
M.S. State University of New York at Buffalo

KAMELIA EL-KOLALLI

Academic Advisor
B.A. Alexandria University

MELBA FLETCHER

Program Professor
B.S. University of New Mexico
M.S. Troy State University
Ed.D. University of Alabama

DANA FREDEBAUGH

Program Professor
B.A. Rollins College
M.A. University of the Virgin Islands
M.S. University of Miami
Ph.D. University of Miami

LINDA H. GOLDSMITH

Program Professor
A.B. University of Pennsylvania
M.A. Fordham University
Ed.D. Western Michigan University

MARILYN K. GRISH

Director of Site Based Activities
B.S. Eastern Michigan University
M.A. Eastern Michigan University
Ed.D. Nova Southeastern University

FELICIA GUERRA

Program Professor
B.S. Georgetown University
M.A. New York University in Spain
Ph.D. University of New Mexico

AUDREY H. HENRY

Program Professor
B.S. Tuskegee Institute
M.Ed. University of Florida
Ed.D. University of Florida

DEE HOWARD
Academic Advisor
B.S. Barry University
M.S. Nova Southeastern University

GEORGE KONTOS
Program Professor
B.A. University of Athens, Greece
M.A. University of Texas at Austin
Ed.D. University of Houston

SIDI M. LAKHDAR
Program Professor
B.A. Salem State College
M.A.T. Salem State College
Ed.D. Boston University

JOAN D. MATHIS
Director of Field Experiences
B.A. Florida Atlantic University
M.Ed. Florida Atlantic University
Ed.D. Nova Southeastern University

DENNIS MURPHY
Program Professor
B.S. Worcester Polytechnic Institute
M.S. Northeastern University
Ph.D. Nova Southeastern University

DEO NELLIS
Program Dean
B.A. State University of New York
at Buffalo
M.S. Nova Southeastern University
Ed.D. Nova Southeastern University

VESNA OSTERTAG
Program Professor
B.A. University of Iowa
M.A. Ball State University
Ed.D. Nova Southeastern University

ERVIN E. "GENE" PADGETT, III
Program Professor
B.S. Mississippi State University
M.A. Mississippi State University
Ed.D. Baylor University

ROBERT PARKS
Program Professor
B.A. Belmont Abbey College
B.B.A. Florida Atlantic University
M.Ed. Florida Atlantic University
Ed.D. University of Miami

SHIRLEY PATCHIN
Coordinator of Student Services

MARK PEREZ
Academic Advisor
B.S. State University of New York at Stony Brook
M.S. Queens College, City University of New York

RICHARD PETERS
Program Professor
B.S. University of Maine
M.Ed. University of Maine
Ed.D. University of Rochester

CECELIA RICHARD-WORCESTER
Coordinator for Program Planning and Evaluation
B.A. University of South Carolina
M.B.A. Nova Southeastern University

WILMA J. ROBLES de MELENDEZ
Program Professor
B.A. University of Puerto Rico
M.A. University of Puerto Rico
Ph.D. Universidad Complutense de Madrid, Spain

MARK SELDINE
Senior Academic Advisor
B.A. University of South Florida
M.Ed. Florida Atlantic University

TIMOTHY SHIELDS
Academic Advisor
B.S. University of Central Florida
M.A. University of Central Florida

DONNA STARR
Program Professor
B.S. Arkansas Tech University
M.Ed. University of Arkansas
Ed.D. University of Arkansas

ED.D. PROGRAMS FOR HIGHER EDUCATION

ADA CHRISTIE
Coordinator of Administrative Operations

NORMA M. GOONEN
Associate Director for Faculty
and Curriculum Development
B.A. Florida International University
M.S. Florida International University
Ed.D. University of Florida

STAN A. HANNAH
Program Professor, Computer and Information
Technology
B.A. Indiana University
M.B.A. Indiana University
M.L.S. Indiana University
Ph.D. Indiana University

LINDA M. HOWARD
Program Professor, Adult Education
B.A. Webster University
M.A. Webster University
Ed.D. Arizona State University

RONALD C. KROLL
Associate Director for Cluster Support
and Student Services
B.S. William Tyndale College
M.A. Eastern Michigan University
Ed.D. Nova Southeastern University

ROSS E. MORETON
Program Dean
B.S. Carson-Newman College
M.A. East Tennessee State University
Ed.D. University of Mississippi

ANNE E. MULDER
Program Professor, Higher Education
B.A. Transylvania University
M.A. University of Michigan
Ph.D. University of Michigan

JOAN B. MURRY
Program Professor, Higher Education
B.A. University of California at San Diego
M.B.A. University of San Diego
Ph.D. The Union Institute

MARTIN B. PARKS
Associate Director for Research
B.A. Eastern Washington University
B.A. Eastern Washington University
Ph.D. The Ohio State University

DELORES M. SMILEY
Associate Director for Cluster Development
and Marketing
B.A. Western Michigan University
M.A. Western Michigan University
Ed.D. Nova Southeastern University

NOVA SOUTHEASTERN UNIVERSITY BOARD OF TRUSTEES

Robert A. Steele
Chairman

Ovid C. Lewis
President

Ray Ferrero, Jr.
Vice Chairman

W. Tinsley Ellis
Secretary

Ronald G. Assaf

Harry A. Gampel

Linda L. Gill

William D. Horvitz

Royal F. Jonas

Kenneth V. Knight

Jack L. LaBonte

Marshall B. Lytle II

Arnold Melnick

Joseph R. Millsaps

August C. Paoli

Emanuel Pushkin

David H. Rush

Barry J. Silverman

Franklin L. Smith

Harry L. Smith

Kay Smith

Morton Terry

R. David Thomas

Jay Tischenkel

August Urbanek

Zachariah P. Zachariah

Ex Officio

Wendy J. Halpern

Terrence Russell

William Vasquez

Abraham S. Fischler
President Emeritus

Honorary Trustees

Robert O. Barber

Hamilton C. Forman

Myron I. Segal

J. Wallace Wrightson

NOVA SOUTHEASTERN UNIVERSITY ADMINISTRATION

JOEL S. BERMAN, J.D.,
Vice President for Legal Affairs

RONALD BLACK, M.Ed.,
*Associate Vice President for
Information Technologies*

DOUGLAS G. BUCK, D.P.A.,
*Associate Vice President for Human
Resources*

MARILYN JOHNSON, M.S.,
*Vice President for Institutional
Advancement*

JOSEPH B. LAKOVITCH, J.D.,
Vice President for Student Affairs

OVID C. LEWIS, J.S.D., *President*

JOHN LOSAK, Ph.D.,
*Vice President for Research and
Planning*

ELIZABETH A. McDANIEL, Ph.D.,
Executive Provost for Academic Affairs

ARNOLD MELNICK, D.O.,
*Executive Vice Chancellor and Provost,
Health Professions Division*

DONALD E. RIGGS, Ed.D.,
*Vice President for Information Sciences
and University Librarian*

JOHN J. SANTULLI, M.B.A.,
*Associate Vice President for
Administration*

JEFFREY SCHNEIDER, C.P.A.,
M.B.A., *Vice President for
Administration and Finance*

MORTON TERRY, D.O., *Chancellor,
Health Professions Division*

NOVA SOUTHEASTERN UNIVERSITY

DEGREE OFFERINGS

Doctoral and Professional Degrees

Doctor of Audiology (Au.D.)
 Doctor of Business Administration (D.B.A.) in:
 Accounting
 Business Administration
 Finance
 Health Services
 Human Resource Management
 International Management
 Information Technology Management
 Marketing
 Doctor of Education (Ed.D.) in:
 Adult Education
 Child and Youth Studies
 Computer and Information Technology
 Computing Technology in Education
 Educational Leadership
 Health Care Education
 Higher Education
 Instructional Technology and Distance Education
 Vocational, Technical, Occupational Education
 Doctor of International Business Administration (D.I.B.A.) in:
 International Business Administration
 Doctor of Medical Dentistry (D.M.D., Fall 1997)
 Doctor of Occupational Therapy (D.O.T.)
 Doctor of Optometry (O.D.)
 Doctor of Osteopathy (D.O.)
 Doctor of Pharmacy (Pharm.D.)
 Doctor of Philosophy (Ph.D.) in:
 Clinical Psychology
 Computer Information Systems
 Computer Science
 Computing Technology in Education
 Dispute Resolution
 Family Therapy
 Information Science
 Information Systems
 Oceanography
 Doctor of Physical Therapy (D.Sc.P.T.)
 Doctor of Psychology (Psy.D.) in:
 Clinical Psychology
 Doctor of Public Administration (D.P.A.) in:
 Public Administration
 Doctor of Speech-Language Pathology (SLP.D.)
 Juris Doctor (J.D.) in:
 Law

Specialist Degrees

Educational Specialist (Ed.S.) in:
 Education

Master's Degrees

Master of Accounting (M.Acc.)
 Master of Biomedical Sciences (M.B.S.)
 Master of Business Administration (M.B.A.)
 Master of International Business Administration (M.I.B.A.)
 Master of Occupational Therapy (M.O.T.)
 Master of Physical Therapy (M.P.T.)

Master of Public Administration (M.P.A.)
 Master of Science (M.S.) in:
 Applied Addiction Studies
 Child and Youth Care Administration
 Coastal Zone Management
 Computer Information Systems
 Computer Science
 Computing Technology in Education
 Dispute Resolution
 Early Childhood Education Administration
 Education
 Elder Care Administration
 Family Support Studies
 Family Therapy
 Health Services Administration
 Human Resource Management
 Instructional Technology and Distance Education
 Management Information Systems
 Marine Biology
 Medical Management
 Mental Health Counseling
 School Guidance and Counseling
 Speech-Language Pathology
 Master of Medical Education (M.Sc.)

Bachelor's Degrees

Bachelor of Arts (B.A.) in:
 Liberal Arts
 Bachelor of Science (B.S.) in:
 Accounting
 Administrative Studies
 Applied Professional Studies
 Business Administration
 Computer Information Systems
 Computer Science
 Early Childhood Education
 Elementary Education
 Exceptional Education
 General Studies
 Hospitality Management
 Legal Assistant
 Legal Studies (prelaw)
 Life Sciences (premedical)
 Ocean Studies
 Physician Assistant
 Professional Management
 Psychology
 Science and the Business Environment
 Science and the Law
 Secondary Education
 Sports and Wellness
 Vision Sciences

PROVISIONS

The provisions set forth in this document are not to be regarded as an irrevocable contract between the student and Nova Southeastern University. Regulations and requirements, including tuition and fees, are necessarily subject to change without notice at any time at the discretion of the administration. The University further reserves the right to require a student to withdraw at any time, as well as the right to impose probation on any student whose conduct is unsatisfactory. Any admission on the basis of false statements or documents is void upon discovery of the fraud, and the student is not entitled to any credit for work that he or she may have done at the University. Upon dismissal or suspension from the University for cause, there will be no refund of tuition and fees. The balance due Nova Southeastern University will be considered receivable and will be collected.

A transcript of a student's academic record cannot be released until all of his or her accounts, academic and non-academic, are paid.

Any Nova Southeastern University student has the right to inspect and review his or her educational record. The policy of the University is not to disclose personally identifiable information contained in a student's educational record without prior written consent from the student, except: to University officials, to officials of another school in which the student seeks enrollment, to authorized representatives of federal or state agencies, to accrediting organizations, to parents of dependent students, under judicial order, to parties in a health or safety emergency, or when verifying graduation with a particular degree.

A student has the right to petition Nova Southeastern University to amend or correct any part of his or her educational record that he or she believes to be inaccurate, misleading, or in violation of the privacy or other rights of students. If the University decides it will not amend or correct a student's record, the student has a right to a hearing to present evidence that the record is inaccurate, misleading, or in violation of the privacy or other rights of students.

If these rights are violated, a student may file a complaint with the Department of Education. A student may obtain a copy of the Educational Privacy Act policy by requesting it in writing from the Office of the University Registrar, Nova Southeastern University, 3301 College Avenue, Fort Lauderdale, Florida 33314-7796. A schedule of fees and a listing of the types and locations of educational records are contained in this policy.

Nova Southeastern University does not discriminate on the basis of disability, sex, race, religion, or national or ethnic origin in admission, access, or employment for any of its programs and activities. The University registrar and director of human resources have been designated as student and employee coordinators, respectively, to assure compliance with the provisions of the applicable laws and regulations relative to nondiscrimination.

The school is authorized under federal law to enroll nonimmigrant alien students.

Nova Southeastern University programs are approved for the training of veterans and other eligible persons by the Bureau of State Approval for Veterans' Training, Florida Department of Veterans' Affairs. Eligible veterans and veterans' dependents should contact the Office of the University Registrar, 3301 College Avenue, Fort Lauderdale, Florida 33314-7796, or telephone (954) 262-7255.

APPLICATION AND ADMISSION PACKET

The following materials may be detached from the catalog and used by those who wish to apply for admission to the Programs for Higher Education. Included here are:

- A graduate admissions application
- Three admissions recommendation forms
- Two transcript request forms
- A certification waiver
- A return envelope
- UNIX Account and Request form

An individual who wishes to apply for admission should:

1. Complete the graduate admissions application and submit it with the \$50 nonrefundable application fee (payable to Nova Southeastern University) and the required certification waiver form letter to the Programs for Higher Education office.
2. Request that the official transcripts of all previous academic work be sent to the same office. An official copy of the master's degree transcript should be submitted immediately to begin the admission process.
3. Request recommendations from *three* supervisors or administrators who can attest to the nature of his or her performance.
4. Following notification of provisional admission, complete and return the portfolio. Each admission file must be completed by the end of the first term of enrollment.
5. GRE scores are required for students of the Greenwood Cluster (South Carolina).



FISCHLER CENTER
 FOR THE ADVANCEMENT OF EDUCATION
 Programs for Higher Education
 3301 College Avenue
 Fort Lauderdale, Florida 33314-7796
 (954) 262-8527 or 800-986-3223, Ext. 8527 (U.S. and Canada)
 Fax: (954) 262-3903

Center-AE	
Cluster Code	HED
Major Code	805, 806, 807, 834, 835
Degree Objective	EDH
S - PR	
AC - GST	
AA - X	
AT - GRM	
First Semester	

Official Use Only

Graduate Admissions Application Programs for Higher Education

To the applicant: We welcome your application to this program. If at any point you are uncertain about the application process, you are encouraged to write or call the program office.

Please enclose a check in the amount of \$50 (application fee) payable to Nova Southeastern University.

NOTE: All application material must be mailed directly to:

Programs for Higher Education
 Nova Southeastern University
 3301 College Avenue
 Fort Lauderdale, Florida 33314-7796

Expected starting date _____ / _____ / _____ Location _____
Mo. Day Year

Soc. Sec.# _____ / _____ / _____ Sex: Male Female Date of birth _____ / _____ / _____
Mo. Day Year

Last Name First Name M.I. Maiden Name

Legal/Permanent Address: Street and Number

City State ZIP Home Telephone Business Telephone/Extension

Mailing address while attending Nova Southeastern (local if applicable) City State ZIP

E-Mail Address Fax Number

Emergency Contact:

Name Street and Number

City State ZIP Home Telephone Business Telephone/Extension

Academic Goal: Check area of specialization

- | | |
|---|--|
| <input type="checkbox"/> Adult Education | <input type="checkbox"/> Higher Education |
| <input type="checkbox"/> Computing and Information Technology | <input type="checkbox"/> Vocational, Technical, Occupational Education |
| <input type="checkbox"/> Health Care Education | |

Please list all colleges and universities attended. An official copy of all previous academic work is required. An official copy of the master degree transcript should be submitted immediately to begin the admission process.

Send them to: Fischler Center for the Advancement of Education
 Admissions Office
 Nova Southeastern University
 3301 College Avenue
 Fort Lauderdale, Florida 33314-7796

Complete Name of College/University	State	Date Started (Mo/Yr)	Date Ended (Mo/Yr)	Major Field	Degree Awarded (B.S., M.S.)	GPA

Do you intend to transfer any graduate level credits toward your doctoral degree?

NO YES

If yes, list: Course number, title, institution, and dates. What Programs for Higher Education seminar would it replace?

Send: Course description, transcript.

Is English your primary Language? Yes No

Citizenship Status:

- U.S. citizen
- Nonresident alien
- Resident alien

International students:

- Do you require an I-20 visa? Yes No
- If you have a visa, indicate status code _____
- Country of citizenship _____
- Native language _____
- TOEFL score _____

I certify that I own or have access to a fax machine: Yes No

Resident alien students are required to submit a copy of their alien registration card. For more information, contact the International Student Office, (954) 262-7240.

Ethnic Origin Data (this information is requested for reporting purposes only):

- Check one of the following:
- White (not of Hispanic origin)
 - Black (not of Hispanic origin)
 - Hispanic origin
 - Asian or Pacific Islander
 - American Indian or native Alaskan

Applicant Status at Time of Application:

First time attending Nova Southeastern University? Yes No

If no, in what program were you enrolled? _____ Dates of attendance _____.

PROGRAMS FOR HIGHER EDUCATION

Name of Applicant _____

GOALS AND ANTICIPATED BENEFITS STATEMENT

PHE's Ed.D. curriculum requires the prospective student to be employed in an education or training setting related to one of the specializations offered and to request admission in that specialization. One intended outcome of the doctoral program is improvement in the student's professional development in the field of education or training and in the specialization; another is advancement of the educational program in the student's institution or organization as a result of applied research projects accomplished by the student as requirements for graduation.

Explain how you think the Nova Southeastern doctoral program will enhance your professional development. What goals have you set for yourself in connection with the program? How do you think your enrollment will benefit your institution or organization? Share your thoughts about prospective applied research projects (practicums, MARP) you might undertake that will improve education or training activities in your organization. (Attach a separate sheet, if necessary.)

EMPLOYMENT INFORMATION

Place of FULL-TIME Employment _____

Address _____ Phone _____
Street City State ZIP

Public Institution Private Institution

Title of Position _____

Present Work Responsibilities _____

Place of PART-TIME Employment _____

Address _____ Phone _____
Street City State ZIP

Title of Position _____

Present Work Responsibilities _____

FINANCIAL AID:

Have you applied for financial aid? Yes No

Have you filed a Free Application for Federal Student Aid (FAFSA)? Yes No

If yes, when was the FAFSA sent to Iowa? _____
Date

I declare that the above information, to the best of my knowledge, is complete and accurate. I agree to abide by all rules and regulations of Nova Southeastern University.

I give Nova Southeastern University permission to publish and use, in NSU publications, any photos in which I appear that may be taken during class or other University activities.

Applicant's signature

Date

Nova Southeastern University is accredited by the Commission on Colleges of the Southern Association of Colleges and Schools (1866 Southern Lane, Decatur, Georgia 30033-4097; Telephone number 404-679-4501) to award bachelor's, master's, educational specialist, and doctoral degrees.

FISCHLER CENTER
 FOR THE ADVANCEMENT OF EDUCATION
 Programs for Higher Education
 3301 College Avenue
 Fort Lauderdale, Florida 33314-7796
 (954) 262-8527 or 800-986-3223, Ext. 8527 (U.S. and Canada)
 Fax: (954) 262-3903

Recommendation for Admission to the Programs for Higher Education

TO THE APPLICANT: This form should be completed by an administrator or supervisor who can indicate the nature of your present performance. You must submit three of these recommendation forms as part of the admission process.

Please complete this portion of the recommendation form *before* giving it to your source of reference.

Pursuant to the Family Education Rights and Privacy Act (Buckley Amendment) enacted on December 31, 1974,
 I DO I DO NOT waive the right to inspect and review this completed recommendation.

Applicant's name (<i>print</i>)		Signature		
Street address	Apartment	City	State	ZIP
Social Security Number	Program	Cluster	Date	
Employer (or institution/organization) _____				

TO THE EVALUATOR: Please do not complete this form if the waiver above has not been completed and signed by the applicant.

The individual named above has made application to the Programs for Higher Education. One of the steps in the admissions process requires each applicant to obtain three letters of recommendation from administrators or supervisors denoting that the applicant has performed satisfactorily at work and will be permitted to complete the practical work (i.e., the practicums) required. The items listed below concern the applicant's performance on the job. Your appraisal of the applicant will be used to help determine if the applicant is eligible for the Programs for Higher Education doctoral program. The Programs for Higher Education at Nova Southeastern University utilize the student's job setting as a laboratory in which each student is required to pursue a practical problem and submit periodic reports. This practicum process can be accomplished effectively only with the knowledge and support of each student's supervisor. Please rate the applicant on the following items:

1. Attitude toward work Somewhat negative Average Positive
2. Motivation toward work Low Average High
3. Ability to carry out tasks Low Average High

4. Resourcefulness in identifying and carrying out tasks Low Average High
5. Emotional control Unstable Usually well balanced Always well balanced
6. Interpersonal relationships Avoided Tolerated by others Well liked by others
7. Most significant strength _____

8. Most significant weakness _____

9. I have known the applicant for _____ years. The applicant has been a member of my staff _____ years. I have known this person: well slightly
10. In my opinion, the applicant's potential for success in a doctoral program of studies is: good average poor
11. In my opinion, the applicant has the ability to effectively complete an institutional or organizational research project: yes no
12. I have observed the applicant's work on institutional or organizational projects and find the project(s): good average poor
13. The applicant works effectively with administrators or supervisors at his/her institution or organization: yes no
14. The applicant has been involved in innovative projects at his/her institution or organization: yes no

I have read the information above and understand that the applicant will be required to complete the practicum projects as a requirement in the doctoral program.

Date: _____ Signature: _____

Institution or Organization: _____ Name: _____
(please print)

_____ Title: _____

Department: _____

RETURN TO: NOVA SOUTHEASTERN UNIVERSITY
Fischler Center for the Advancement of Education
Admissions Office
3301 College Avenue
Fort Lauderdale, Florida 33314-7796

FISCHLER CENTER
 FOR THE ADVANCEMENT OF EDUCATION
 Programs for Higher Education
 3301 College Avenue
 Fort Lauderdale, Florida 33314-7796
 (954) 262-8527 or 800-986-3223, Ext. 8527 (U.S. and Canada)
 Fax: (954) 262-3903

Recommendation for Admission to the Programs for Higher Education

TO THE APPLICANT: This form should be completed by an administrator or supervisor who can indicate the nature of your present performance. You must submit three of these recommendation forms as part of the admission process.

Please complete this portion of the recommendation form *before* giving it to your source of reference.

Pursuant to the Family Education Rights and Privacy Act (Buckley Amendment) enacted on December 31, 1974,
 I DO I DO NOT waive the right to inspect and review this completed recommendation.

Applicant's name (<i>print</i>)		Signature		
Street address	Apartment	City	State	ZIP
Social Security Number	Program	Cluster	Date	
Employer (or institution/organization) _____				

TO THE EVALUATOR: Please do not complete this form if the waiver above has not been completed and signed by the applicant.

The individual named above has made application to the Programs for Higher Education. One of the steps in the admissions process requires each applicant to obtain three letters of recommendation from administrators or supervisors denoting that the applicant has performed satisfactorily at work and will be permitted to complete the practical work (i.e., the practicums) required. The items listed below concern the applicant's performance on the job. Your appraisal of the applicant will be used to help determine if the applicant is eligible for the Programs for Higher Education doctoral program. The Programs for Higher Education at Nova Southeastern University utilize the student's job setting as a laboratory in which each student is required to pursue a practical problem and submit periodic reports. This practicum process can be accomplished effectively only with the knowledge and support of each student's supervisor. Please rate the applicant on the following items:

1. Attitude toward work Somewhat negative Average Positive
2. Motivation toward work Low Average High
3. Ability to carry out tasks Low Average High

4. Resourcefulness in identifying and carrying out tasks Low Average High
5. Emotional control Unstable Usually well balanced Always well balanced
6. Interpersonal relationships Avoided Tolerated by others Well liked by others
7. Most significant strength _____

8. Most significant weakness _____

9. I have known the applicant for _____ years. The applicant has been a member of my staff _____ years. I have known this person: well slightly
10. In my opinion, the applicant's potential for success in a doctoral program of studies is: good average poor
11. In my opinion, the applicant has the ability to effectively complete an institutional or organizational research project: yes no
12. I have observed the applicant's work on institutional or organizational projects and find the project(s): good average poor
13. The applicant works effectively with administrators or supervisors at his/her institution or organization: yes no
14. The applicant has been involved in innovative projects at his/her institution or organization: yes no

I have read the information above and understand that the applicant will be required to complete the practicum projects as a requirement in the doctoral program.

Date: _____ Signature: _____

Institution or Organization: _____ Name: _____

(please print)

_____ Title: _____

Department: _____

RETURN TO: NOVA SOUTHEASTERN UNIVERSITY
Fischler Center for the Advancement of Education
Admissions Office
3301 College Avenue
Fort Lauderdale, Florida 33314-7796

FISCHLER CENTER
 FOR THE ADVANCEMENT OF EDUCATION
 Programs for Higher Education
 3301 College Avenue
 Fort Lauderdale, Florida 33314-7796
 (954) 262-8527 or 800-986-3223, Ext. 8527 (U.S. and Canada)
 Fax: (954) 262-3903

Recommendation for Admission to the Programs for Higher Education

TO THE APPLICANT: This form should be completed by an administrator or supervisor who can indicate the nature of your present performance. You must submit three of these recommendation forms as part of the admission process.

Please complete this portion of the recommendation form *before* giving it to your source of reference.

Pursuant to the Family Education Rights and Privacy Act (Buckley Amendment) enacted on December 31, 1974,
 I DO I DO NOT waive the right to inspect and review this completed recommendation.

Applicant's name (<i>print</i>)		Signature		
Street address	Apartment	City	State	ZIP
Social Security Number	Program	Cluster	Date	
Employer (or institution/organization) _____				

TO THE EVALUATOR: Please do not complete this form if the waiver above has not been completed and signed by the applicant.

The individual named above has made application to the Programs for Higher Education. One of the steps in the admissions process requires each applicant to obtain three letters of recommendation from administrators or supervisors denoting that the applicant has performed satisfactorily at work and will be permitted to complete the practical work (i.e., the practicums) required. The items listed below concern the applicant's performance on the job. Your appraisal of the applicant will be used to help determine if the applicant is eligible for the Programs for Higher Education doctoral program. The Programs for Higher Education at Nova Southeastern University utilize the student's job setting as a laboratory in which each student is required to pursue a practical problem and submit periodic reports. This practicum process can be accomplished effectively only with the knowledge and support of each student's supervisor. Please rate the applicant on the following items:

1. Attitude toward work Somewhat negative Average Positive
2. Motivation toward work Low Average High
3. Ability to carry out tasks Low Average High

4. Resourcefulness in identifying and carrying out tasks Low Average High
5. Emotional control Unstable Usually well balanced Always well balanced
6. Interpersonal relationships Avoided Tolerated by others Well liked by others
7. Most significant strength _____

8. Most significant weakness _____

9. I have known the applicant for _____ years. The applicant has been a member of my staff _____ years. I have known this person: well slightly
10. In my opinion, the applicant's potential for success in a doctoral program of studies is: good average poor
11. In my opinion, the applicant has the ability to effectively complete an institutional or organizational research project: yes no
12. I have observed the applicant's work on institutional or organizational projects and find the project(s): good average poor
13. The applicant works effectively with administrators or supervisors at his/her institution or organization: yes no
14. The applicant has been involved in innovative projects at his/her institution or organization: yes no

I have read the information above and understand that the applicant will be required to complete the practicum projects as a requirement in the doctoral program.

Date: _____ Signature: _____

Institution or Organization: _____ Name: _____
(please print)

_____ Title: _____

Department: _____

RETURN TO: NOVA SOUTHEASTERN UNIVERSITY
Fischler Center for the Advancement of Education
Admissions Office
3301 College Avenue
Fort Lauderdale, Florida 33314-7796



FISCHLER CENTER FOR THE ADVANCEMENT OF EDUCATION
Programs for Higher Education
3301 College Avenue
Fort Lauderdale, Florida 33314-7796
(954) 262-8527 or 800-986-3223, Ext. 8527 (U.S. and Canada)
Fax: (954) 262-3903

REQUEST FOR OFFICIAL TRANSCRIPT
PROGRAMS FOR HIGHER EDUCATION

STUDENT: Fill in the blanks in both sections. Mail to your former school.

Dear Alma Mater:

Please send an official transcript of my academic work, while attending your institution, to Nova Southeastern University on the form below.

A. I attended your school from _____ to _____.

B. While in attendance, my name on your records was

Last First Middle/Maiden

C. My student identification number was _____.

Thank you for your assistance.

Sincerely,

Signature

PROGRAMS FOR HIGHER EDUCATION

DEAR ALMA MATER: PLEASE RETURN THIS FORM WITH THE TRANSCRIPT. THANK YOU.

TRANSCRIPT TRANSMITTAL FORM

Social Security No. ____/____/____ Date _____

Name _____
Last First Middle/Maiden

Street _____ Apartment _____

City _____ State _____ ZIP _____

PLEASE SEND ONE COPY TO :

NOVA SOUTHEASTERN UNIVERSITY
Fischler Center for the Advancement of Education
Admissions Office
3301 College Avenue
Fort Lauderdale, Florida 33314-7796



FISCHLER CENTER FOR THE ADVANCEMENT OF EDUCATION Programs for Higher Education 3301 College Avenue Fort Lauderdale, Florida 33314-7796 (954) 262-8527 or 800-986-3223, Ext. 8527 (U.S. and Canada) Fax: (954) 262-3903

REQUEST FOR OFFICIAL TRANSCRIPT PROGRAMS FOR HIGHER EDUCATION

STUDENT: Fill in the blanks in both sections. Mail to your former school.

Dear Alma Mater:

Please send an official transcript of my academic work, while attending your institution, to Nova Southeastern University on the form below.

A. I attended your school from _____ to _____.

B. While in attendance, my name on your records was

_____ Last First Middle/Maiden

C. My student identification number was _____.

Thank you for your assistance.

Sincerely,

Signature

PROGRAMS FOR HIGHER EDUCATION

DEAR ALMA MATER: PLEASE RETURN THIS FORM WITH THE TRANSCRIPT. THANK YOU.

TRANSCRIPT TRANSMITTAL FORM

Social Security No. _____ / _____ / _____ Date _____

Name _____ Last First Middle/Maiden

Street _____ Apartment _____

City _____ State _____ ZIP _____

PLEASE SEND ONE COPY TO :

NOVA SOUTHEASTERN UNIVERSITY Fischler Center for the Advancement of Education Admissions Office 3301 College Avenue Fort Lauderdale, Florida 33314-7796



FISCHLER CENTER
FOR THE ADVANCEMENT OF EDUCATION
Programs for Higher Education
3301 College Avenue
Fort Lauderdale, Florida 33314-7796
(954) 262-8527 or 800-986-3223, Ext. 8527 (U.S. and Canada)
Fax: (954) 262-3903

Dr. Ross E. Moreton
Program Dean
Programs for Higher Education
Nova Southeastern University
3301 College Avenue
Fort Lauderdale, Florida 33314-7796

Re: Certification Waiver

Dear Dr. Moreton:

Because of the national scope of the program and the uniqueness of the requirements of each state, I understand that acceptance to and satisfactory completion of the doctoral program does not guarantee that I will meet certificate requirements for the state in which I am employed. I further understand that this applies to all five specializations: Adult Education; Computing and Information Technology; Health Care Education; Higher Education; and Vocational, Technical, Occupational Education. However, I do want to be considered for admission.

Sincerely,

Signature of applicant

Name (please print)

Social Security Number _____ / _____ / _____

Date

RETURN TO: NOVA SOUTHEASTERN UNIVERSITY
Fischler Center for the Advancement of Education
Admissions Office
3301 College Avenue
Fort Lauderdale, Florida 33314-7796

FCAE UNIX ACCOUNT APPLICATION FORM

You must have access to a computer and a modem before requesting a Unix Account. You must fill in this form completely; incomplete forms will delay processing. In addition to your login name and password, you will be sent Quick Start sheets to assist with configuring your computer's telecommunications software and the Introduction to Distance Library Services at NSU. An account not used for 6 months will be deactivated or deleted from the system. This form will be processed upon your acceptance to the program to which you are applying, and may take up to 10 working days from receipt by FCAE Network Services to be processed. **This form will not be processed unless signed on the reverse side.**

PLEASE PRINT OR TYPE CLEARLY

Social Security Number

- -

Last Name

First Name

M.I.

Mailing Address

City

State

Zip

-

Home Phone

() -

Business Phone

() -

Fax

() -

Check the program with which you are associated: EDL GTEP LSCA PET PHE CSD FCAE

FCAE Status : Student Staff Faculty Do you own a telecommunication program: Yes.

Operating System : DOS Windows 3.1 Windows 95 NT Workstation Macintosh No.

PLEASE CONTINUE ON REVERSE SIDE
(SIGNATURE REQUIRED ON REVERSE SIDE)

FOR PROGRAM USE ONLY

Please provide this applicant with a UNIX account. I certify that he/she is registered/employed in our program and is entitled to an account.

Director / Designate _____

Date _____

FOR NETWORK SERVICES USE ONLY

Date Received: _____

Login: _____

Date Entered: _____

Password: _____

Date Mailed: _____

Processor's Initials _____



STUDENT CODE OF COMPUTER ETHICS

Nova Southeastern University provides computer systems with access to hardware, software, and networks to enhance academic experience. The University's computer systems are vital to the University's programs of instruction, research and administration. Nova Southeastern computer systems refer to all computers owned or operated by the University and include hardware, software, data, and communication networks associated with these systems. In particular, computer systems refer to systems ranging from multi-user time-sharing systems to single-user terminals and personal computers, whether free-standing or connected to a network.

Ethical conduct by students in the use of this technology is the same as in all other areas of University life and it is of equal importance. All students are expected to abide by the Nova Southeastern University Code of Student Conduct and Academic Responsibility. Students as part of their academic preparation towards specific professional career goals must be aware of and abide by the professional code of ethics associated with that chosen profession. Therefore, student technology users must apply standards of normal academic and professional ethics and considerate conduct to their use of the University's computing systems and resources, including respect of other users' rights to privacy.

The student user must be aware of the legal and moral responsibility for ethical conduct in the use of technology. Student users of Nova Southeastern's computer systems are subject to all applicable federal, state and international computer laws. A copy of the "Florida Computer Crimes Act" and referenced Florida State Statutes may be examined online or in a student's academic program office.

In addition, a student accessing any of Nova Southeastern University computer systems, whether a multi-user time-sharing system or a single-user terminal or personal computer, must:

- have proper authorization for use or attempted use of accounts within the Nova Southeastern University computer systems
- limit the use of Nova Southeastern University computer systems to academic activities as defined by the student's academic program office
- refrain from attempting to tamper with or obstruct the operation of Nova Southeastern computer systems
- be aware that accessing or using another person's computer account without that person's permission is illegal and unethical
- refrain from any attempt to use Nova Southeastern University computer systems as a means for the unauthorized access to computer systems outside the University's systems
- be aware that the use of invasive software, such as worms and viruses destructive to hardware, software or data files is illegal and unethical
- be aware that using Nova Southeastern University's computer systems to act or behave in a rude, obscene or harassing manner will be dealt with by appropriate University policy, procedures and agents
- use only legally obtained or licensed data or software in accordance with its license or purchase agreement
- be in compliance with Federal copyright laws and the University's Copyright Code

As with all matters of law and ethics, ignorance of the rules does not excuse violations. Inappropriate conduct and violations will be dealt with under the guidelines of the Nova Southeastern University Code of Student Conduct and Academic Responsibility as defined and determined by the Office of the Academic Vice President and the Office of the Dean of a student's academic program.

ACADEMIC COMPUTING ACCOUNT SECURITY AND ETHICS AGREEMENT

Nova Southeastern University has adopted rules for computing. The following rules outline your responsibilities for securing your computing account. This is not, however, a comprehensive list of all online policies, procedures, and responsibilities. Consult the NSU Policy regarding Use of Computers and Network Systems. If you misuse your account these privileges may be withheld. You must read, sign, and return this form to your account coordinator before your account can be activated.

Your computer account is to be used only by you. Do not share your account with other individuals. The password to your account must be kept secure. Make sure to commit your password to memory. You may change your password at any time with the password command.

Always choose a password that is difficult to "guess." Your password should conform to the following rules:

- It must be eight (8) characters in length.
- It must contain four (4) letters and four (4) numbers.
- It must not be any word that can be found in a dictionary.
- Choose a password that is meaningful to you but not obvious to anyone else.

Examples of acceptable passwords are: 29py94ju, as76dl98, 98df 7gh6.

NSU computer systems will automatically monitor your password on a regular basis. If your password is "guessed" by the system, you will be sent electronic mail indicating that this has happened. If this occurs, change your password immediately to prevent anyone from tampering with your account. It is your responsibility to make backups of your files on your computer. NSU is not responsible for the loss of your computer files.

There are no specific limits to online time; however, you are encouraged to use your online time wisely in order to conserve resources. Online time that has been excessive and/or used for unauthorized purposes can result in a charge to you. If you do not access your account for a period of six (6) months, your account will be deleted.

I understand the above rules for using the NSU computing systems and networks and agree to abide by them. If you have trouble accessing your account or forget your password, please contact your account coordinator. he/she can facilitate any changes needed to get you working again.

I understand the statement of ethics and the above rules for using Nova Southeastern University's academic computing systems and agree to abide by them.

Print Name

Academic Program

Signature

Date

**PROGRAMS FOR HIGHER EDUCATION
(PHE) STAFF**

Lina A. Alexander
Receptionist and Learning Materials Specialist
(Ext. 8530)
alexemma@fcae.nova.edu

Ada Christie
Coordinator of Administrative Operations
(Ext. 8525)
ada@fcae.nova.edu

Carolyn S. Cohen
Secretary
(Ext. 8538)
cohencs@fcae.nova.edu

Barbara A. Cromartie
Administrative Assistant to the Faculty
(Ext. 8522)
crombarb@fcae.nova.edu

Dorie E. Dorst
Administrative Secretary
(Ext. 8524)
ritchied@fcae.nova.edu

Eileen E. Fisher
Secretary
(Ext. 8539)
fisherei@fcae.nova.edu

Norma M. Goonen, Ed.D.
*Associate Director for Faculty
and Curriculum Development*
(Ext. 8529)
goonen@fcae.nova.edu

Stan A. Hannah, Ph.D.
*Program Professor, Computing
and Information Technology*
(Ext. 8532)
hannahs@fcae.nova.edu

Linda M. Howard, Ed.D.
Program Professor, Adult Education
(Ext. 8531)
lhoward@fcae.nova.edu

Marilyn A. Kriss
Administrative Assistant to the Program Dean
(Ext. 8520)
krissm@fcae.nova.edu

Ronald C. Kroll, Ed.D.
*Associate Director for
Cluster Support and Student Services*
(Ext. 8510)
krollr@fcae.nova.edu

Ross E. Moreton, Ed.D.
Program Dean
(Ext. 8530)
moreton@fcae.nova.edu

Anne E. Mulder, Ph.D.
Program Professor, Higher Education
(Ext. 8528)
muldera@fcae.nova.edu

Joan B. Murry, Ph.D.
Program Professor, Higher Education
(Ext. 8533)
murryj@fcae.nova.edu

Joanne L. Nance
Registrations and Tuition Payments Specialist
(Ext. 8521)
nancej@fcae.nova.edu

Martin B. Parks, Ph.D.
Associate Director for Research
(Ext. 8537)
parksm@fcae.nova.edu

Marjorie C. Rowland
Administrative Secretary
(Ext. 8536)
rowlandm@fcae.nova.edu

Delores M. Smiley, Ed.D.
*Associate Director for Cluster Development
and Marketing*
(Ext. 8527)
smiley@fcae.nova.edu

Phillip S. Thomas
Secretary to the Faculty
(Ext. 8523)
thomasph@fcae.nova.edu

Leslie K. Torres
Students' Records and Faculty Payments Specialist
(Ext. 8535)
torresl@fcae.nova.edu

Tanya M. Walker
*Administrative Assistant for Online
and Database Information*
(Ext. 8534)
tanyaw@fcae.nova.edu

CENTRAL OFFICE

Toll Free Number 800-986-3223, Ext. 8530 (U.S. and Canada)
Local Number (954) 262-8530
Fax Number (954) 262-3903
Internet Address: www.fcae.nova.edu/phe

NOVA
SOUTHEASTERN
U N I V E R S I T Y

FISCHLER CENTER FOR
THE ADVANCEMENT OF EDUCATION

Programs for Higher Education

3301 College Avenue

Fort Lauderdale, Florida 33314-7796

(954) 262-8527

800-986-3223, Ext. 8527 U.S. and Canada

Fax (954) 262-3903