

---

NSU Athletics Sports Programs and Media Guides

---

2002

## 2002 NSU Knights Women's Soccer Media Guide

Nova Southeastern University

Follow this and additional works at: [https://nsuworks.nova.edu/athletics\\_mediaguides](https://nsuworks.nova.edu/athletics_mediaguides)



Part of the [Higher Education Commons](#), and the [Sports Management Commons](#)

---

# 2002 Women's Soccer Media Guide

NOVA SOUTHEASTERN UNIVERSITY





### 2002 Women's Soccer Schedule

Date	Day	Opponent	Time
August 31	Saturday	University of Alabama—Huntsville	8:00 p.m.
September 2	Monday	Florida Southern College	7:00 p.m.
September 10	Tuesday	St. Thomas University	7:00 p.m.
September 15	Sunday	Montevallo College	11:00 a.m.
September 18	Wednesday	Eckerd College	4:00 p.m.
September 19	Thursday	Warner Southern College	3:00 p.m.
September 28	Saturday	Malone College	5:00 p.m.
October 2	Wednesday	Northwood University	4:00 p.m.
October 5	Saturday	Rollins College	7:00 p.m.
October 9	Wednesday	Barry University	7:00 p.m.
October 15	Tuesday	Palm Beach Atlantic College	7:00 p.m.
October 19	Saturday	University of North Alabama	4:00 p.m.
October 20	Sunday	Webber International University	1:00 p.m.
October 25	Friday	Barry University	7:00 p.m.
November 1	Friday	Lenoir Rhyne	3:00 p.m.
November 2	Saturday	Mars Hill College	6:30 p.m.
November 6	Wednesday	Lynn University	8:00 p.m.
November 9	Saturday	Flagler College	5:00 p.m.

Home games in bold



## Table of Contents

Women's Soccer Schedule .....	Inside front cover
Table of Contents .....	1
NSU Quick Facts .....	2
Women's Soccer Quick Facts .....	3
2002 Women's Soccer Jerseys .....	3
Media Services .....	4
Media Outlets .....	5
Letter from the President/Administration .....	6
NSU Department of Athletics Directory .....	11
2002–2003 NSU Athletics Staff .....	12
2002–2003 NSU Coaches .....	14
NSU Overview .....	18
NSU Degree Offerings .....	22
NSU Athletic Facilities .....	24
NSU Athletic Facilities Map .....	26
NCAA .....	27
Sunshine State Conference .....	29
SSC Opponents .....	30
2002 Women's Soccer Roster .....	32
2002 Women's Soccer Coaches .....	33
2002 Women's Soccer Outlook .....	35
Returning Players .....	38
Women's Soccer Newcomers .....	42
2001 NSU Knights Women's Soccer Statistics .....	46
2001 NSU Knights Women's Soccer Record Book .....	47
2002 NSU Fall Sports Schedules .....	52
Big Blue Club .....	55

### ACKNOWLEDGEMENTS:

**Written, Edited, Researched, and Designed by the Nova Southeastern University Sports Information Department:** Robert Prior, Kim Starman, Todd Gittleman.  
**Production and Printing:** NSU Office of Publications.

**Pictured on the cover are 2002 NSU Women's Soccer Captains:** (L–R) Rebecca Harrison-F, Jenni McDonough-D, and Dawn Banford-M.



### NSU Quick Facts

Location:	Fort Lauderdale, Florida
Mailing Address:	Nova Southeastern University Department of Athletics 3301 College Avenue Fort Lauderdale, Florida 33314-7796
Founded:	1964
Undergrad Enrollment:	4,019
Nickname:	Knights
School Colors:	Navy Blue, Gray
Home Field:	NSU Soccer Complex
Capacity:	1,500
Affiliation:	NCAA Division II
Conference:	Sunshine State Conference
President:	Ray Ferrero, Jr.
Interim Athletic Director:	Michael Mominey
Athletic Administration Office:	(954) 262-8250
Athletic Fax:	(954) 262-3926
Sports Information Director:	Robert Prior
Sports Information Office:	(954) 262-8261
Sports Information Fax:	(954) 262-3273
NSU Web site:	<a href="http://www.nova.edu">www.nova.edu</a>
Athletics Web site:	<a href="http://nsuathletics.nova.edu">http://nsuathletics.nova.edu</a>



## Women's Soccer Quick Facts

- First year of women's soccer: 1995-96
- All-time record: 65-67-3
- Championships/years won: Three Florida Sun Conference titles (1995, 1997, 1998)
- 2001-02 Record: 2-15-1
- Last post-season match: 2001, Semi-Regionals, lost 3-1 against Embry-Riddle University
- Starters returning: 4
- Starters lost: 7

## 2002 NSU Knights Women's Soccer Jerseys



HOME JERSEY



AWAY JERSEY



### Media Services

#### DEPARTMENT OF ATHLETICS

The Nova Southeastern University Department of Athletics is located at 3301 College Avenue, Fort Lauderdale, Florida 33314-7796. The main Department of Athletics phone number is (954) 262-8250.

#### SPORTS INFORMATION DEPARTMENT

The Nova Southeastern University Sports Information Office is located in the Department of Athletics—Athletic Building 2 on SW 75th Street. The NSU Sports Information staff can be reached by contacting:

**Robert Prior**, Sports Information Director

Phone: (954) 262-8261

Email: [prior@nova.edu](mailto:prior@nova.edu)

Home: (954) 530-5073

Cellular: (954) 732-6182

**Kim Starman**, Assistant Sports Information Director

Phone: (954) 262-1599

Email: [starmank@nova.edu](mailto:starmank@nova.edu)

**Todd Gittleman**, Assistant Sports Information Director

Phone: (954) 262-8254

Email: [gittlema@nova.edu](mailto:gittlema@nova.edu)

Sports Information Office Fax: (954) 262-3273

#### CREDENTIALS

Members of the working press, electronic media, and other news agencies can request credentials to cover NSU athletic events by calling the NSU Sports Information Department at least 24 hours prior to game time. Accredited photographers and Electronic News Gathering (ENG) crews may shoot from designated areas at all events. Please contact Bob Prior with any questions.

#### STATISTICS/SERVICES

Media Guides, programs, fact sheets, and cumulative statistics will be furnished to the working media prior to game time. Complete statistical information will be available to the media at the conclusion of all NSU home athletic events. Telephones and a fax machine are available for use in the athletics offices. Please contact a member of the Sports Information staff to request usage of this service.

#### INTERVIEWS

All one-on-one interviews with Nova Southeastern University players and coaches should be scheduled through the NSU Sports Information Office. Please provide at least 24 hours advance notice to allow interview arrangements to be made. Interviews at the conclusion of all home games will be held after a brief cooling off period. Any requests for visiting team interviews should be made through the visiting team's sports information representative. If one is not present, the NSU Sports Information staff will assist you with visiting team interview needs.



## Media Outlets

### NEWSPAPERS

*Miami Herald*  
1 Herald Plaza  
Miami, FL 33132-1693  
Phone: (305) 350-2222

*Miami Times*  
900 NW 54th Street  
Miami, FL 33127  
Phone: (305) 757-1147

*Sun-Sentinel*  
200 East Las Olas Blvd., #1000  
Fort Lauderdale, FL 33301-2293  
Phone: (954) 356-4000

*Palm Beach Post*  
2915 South Congress Avenue  
Delray Beach, FL 33445-7338  
Phone: (561) 279-3400

### WIRE SERVICES

*Associated Press (AP)*  
9100 NW 36th Street  
Miami, FL 33172  
Phone: (305) 594-5825  
Fax: (305) 594-9265

*Agence France-Presse*  
1015 15th Street NW, Suite 500  
Washington, D.C. 20005  
Phone: (202) 414-0575  
Fax: (202) 414-0598

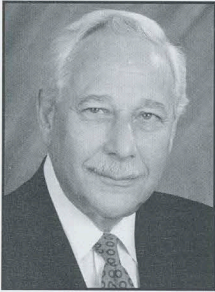
*United Press International (UPI)*  
4011 West Flagler, Suite 305  
Miami, FL 33431  
Phone: (305) 541-4500  
Fax: (305) 642-7800







### **Ray Ferrero, Jr., J.D.** **President, Nova Southeastern University**



The 2002–2003 school year ushers in a historic era in Nova Southeastern University Athletics, as we accepted the offer to join the Sunshine State Conference, one of the most respected conferences—academically and athletically—in the NCAA Division II.

In doing so, NSU also became a member of the National Collegiate Athletic Association, which embodies 1,200 other institutions, conferences, organizations, and individuals.

This is a very exciting time for Nova Southeastern University and its Department of Athletics, which is competing in its 20th year of intercollegiate play. As the university is growing overall, so is our athletics program, making these steps natural.

The Sunshine State Conference is well-known and well-respected throughout the nation, not only for athletic excellence, but for its academic standards, as well. The invitation to join the league was, needless to say, an honor we did not hesitate to accept.

This is an especially exciting time for our university, as many of the dreams and projects we have envisioned are coming into reality. Planning for the University Center, which will enhance the sports, recreational, and cultural activities for the students at Nova Southeastern University, is underway.

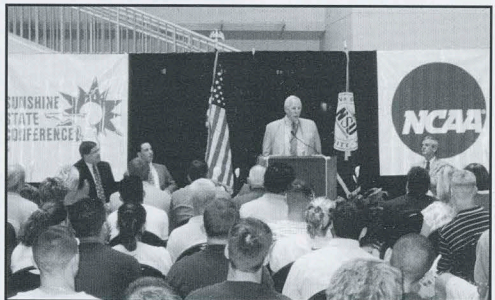
Our incredible new Library, Research, and Information Technology Center, a \$43 million, state-of-the-art facility that will be Florida's largest library at capacity, is now open. This year also saw the realization of another dream as we broke ground for the Jim & Jan Moran Family Center Village.

Construction on the Carl DeSantis building, which will house the Wayne Huizenga Graduate School of Business and Entrepreneurship, has begun on the Main Campus and will give business students and faculty members increased technology, resources, and space.

All of these projects will greatly expand the resources available to our students, faculty and staff members, and administration. They will also strengthen our bonds with the people, businesses, and organizations throughout the community we serve.

Since I began my tenure four years ago as president of Nova Southeastern University, I have remained steadfast in my goal: to continue to develop and refine quality education programs and prepare students for leadership positions and the emerging challenges in the 21st century.

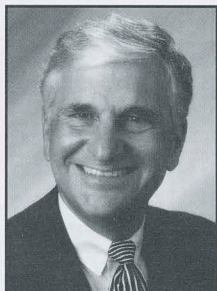
Everyone associated with this university can take pride in the excellence we have achieved thus far, and look forward to a very exciting future. While we have done so much so quickly, we are still young and growing. We will continue to seek and implement ways to better ourselves every day. And we will aim to surpass even our own high standards of excellence in academics, research, technology, athletics and community service. Remember, "Excellence is our Standard."



**NSU President Ray Ferrero, Jr., accepts invitation to join Sunshine State Conference and NCAA Division II on August 26, 2002.**



**George L. Hanbury II, Ph.D.**  
**Executive Vice President for Administration**



On September 1, 1998, George L. Hanbury II became the Executive Vice President for Administration of Nova Southeastern University. Prior to his appointment as executive vice president, he had a career in municipal administration totaling more than thirty years, and was the chief executive officer (city manager), to the following cities: Fort Lauderdale, Florida; Portsmouth, Virginia; and Virginia Beach, Virginia. In addition, he was an Assistant City Manager in the cities of Norfolk and Virginia Beach, Virginia.

Hanbury received his Ph.D. in Public Administration from Florida Atlantic University, and also holds a master's degree in public administration from Old Dominion University and a bachelor of science degree in business administration with a major in public administration from Virginia Polytechnic Institute and State University (Virginia Tech).

He has been certified through the Senior Executive Institute at the University of Virginia and was inducted into Pi Alpha Alpha, the national honor society for the field of public affairs and public administration.

He has been recognized for his leadership by groups such as:

- The City Commission of the City of Fort Lauderdale
- The City Council of the City of Portsmouth
- The City/County Managers' Association of Virginia, and of Florida
- The Broward County City/County Management Association (BCCMA)
- The unions representing the City of Fort Lauderdale fire fighters, police officers, and general employees
- The International Swimming Hall of Fame
- The Fort Lauderdale Downtown Development Authority
- The Council of Civic Associations of Fort Lauderdale
- The NAACP Chapters of Portsmouth, and of Fort Lauderdale
- The Chambers of Commerce of Greater Fort Lauderdale, Portsmouth, and Virginia Beach

In addition, he has been honored and awarded the designations of:

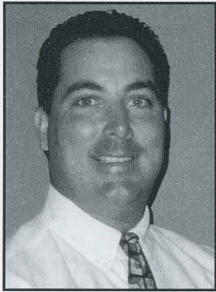
- Listed Who's Who in America from 1978 to the present
- The 2000 BCCMA Leadership Award
- Exemplary Employee of the City of Fort Lauderdale for 2000
- Distinguished Alumni of Old Dominion University for 1997
- An Outstanding Young Man of America in 1977
- Outstanding Young Man of Virginia in 1976
- Outstanding Young Man of Virginia Beach in 1975

Hanbury's civic activities are represented by his service on the boards of the following organizations:

- Greater Fort Lauderdale chamber of commerce (board of directors), Broward Partnership for the Homeless (board of directors)
- Broward Alliance (Investors Council)
- Administrative Board and Finance Committee of the First United Methodist Church of Fort Lauderdale.



### **Michael Mominey** Interim Athletic Director



Michael Mominey was named Interim Director of Athletics for Nova Southeastern University on January 2, 2002, and has more than eight years of experience in the administration sector.

He leads NSU Athletics into a historic and defining era, as the Knights begin their first season of competition in NCAA Division II and the Sunshine State Conference.

“This is a very exciting time for the athletic program and our university as a whole. Anytime you can be a part of a growth period in a prestigious university such as Nova Southeastern, you know it can be special,” said Mominey. “We have a great group of student athletes, knowledgeable and energetic coaches, and a hardworking support staff. I look forward to representing them all, as well as the university, as the Director of Athletics.”

He was previously the Athletic Director at Chaminade-Madonna College Preparatory school from 1996–2002. He also served as the Assistant Director of Athletics at St. Thomas University from 1992 to 1996.

Prior to relocating to Florida, Mominey was the Assistant to Player Development and Scouting for the Cleveland Indians Baseball Club from 1990 to 1992. He worked in the front office of the major league club and was directly involved in the day to day operations of the scouting and player development departments.

Mominey graduated from St. Thomas University with a master's degree in Sports Administration and from Bowling's Green State University with a bachelor's degree in Education/ Sport Management.

He resides in Pembroke Pines, Florida's with his wife Denise and children Tyler and Alexa.



**Interim Director of Athletics Michael Mominey along with SSC Assistant Commissioner Gregg Kaye, SSC Commissioner Don Landry and NSU President Ray Ferrero, Jr.**



**Mark Cavanaugh, Ph.D.**  
Faculty Athletic Representative



Mark Cavanaugh is an Associate Professor in the Department of Liberal Arts at NSU and has served as Faculty Athletic Representative since 1989. He holds a bachelor's degree in Literature from Iona College in New Rochelle, New York, as well as master's and doctoral degrees from the University of Notre Dame, where he read *Social Psychology*.

During NSU's membership in the NAIA, Cavanaugh served as eligibility chairperson for the Florida Sun Conference for ten years, overseeing the academic eligibility of athletes from all member schools. Along with former Director of Athletics Corey Johnson, Cavanaugh initiated the process, which resulted in NSU's affiliation with the NCAA.

He is a past president of the Faculty Athletic Representatives' Association of the NAIA, which he also served as secretary. A former member of the National Association of Academic Advisers for Athletics (N4A), Cavanaugh chaired that organization's Committee on Student-Athlete Concerns for four years beginning in 1993.

He has published and spoken widely on the personal development of collegiate student-athletes. His research areas include the study of consciousness, as well as human performance factors, especially as they relate to highly skilled activities such as athletics and music.

A musician himself, Cavanaugh is an arranger, conductor, pianist, and composer, regularly writing for collegiate bands, choral groups, and professional symphony orchestras. He has recently conducted and recorded with the Bohuslav Martinu Philharmonic Orchestra in the Czech Republic.

On campus, Cavanaugh is the host of the popular "Life 101" series, which brings noteworthy people to NSU for the purpose of sharing their insights and experiences with the university community. A popular master of ceremonies, he also hosts the annual Student Life Achievement Awards, by which the university recognizes campus-wide excellence and service.

Cavanaugh lives in Plantation, Florida.

**NIKE**  
**Official apparel**  
**and uniform supplier**  
**for the NSU Knights**





## NSU Department of Athletics Directory

### Athletics Staff

Michael Mominney	Interim Athletic Director	(954) 262-8252	<i>mominney@nova.edu</i>
Mark Cavanaugh	Faculty Athletic Representative	(954) 262-8206	<i>mark@nova.edu</i>
Rob Allen	Assistant AD/Business Operations	(954) 262-8267	<i>allenrob@nova.edu</i>
Nino Berticelli	Coordinator of Athletic Academic Services	(954) 262-8262	<i>berticel@nova.edu</i>
Shannon Cain	Assistant AD/Compliance/SWA	(954) 262-8266	<i>cain@nova.edu</i>
Todd Gittleman	Assistant Sports Information Director	(954) 262-8254	<i>gittlema@nova.edu</i>
Shane Levenson	Head Athletic Trainer	(954) 262-8256	<i>shanelev@nova.edu</i>
Patricia Marshall	Assistant Athletic Trainer	(954) 262-8260	<i>patmars@nova.edu</i>
Robert Prior	Sports Information Director	(954) 262-8261	<i>prior@nova.edu</i>
Kim Starman	Assistant Sports Information Director	(954) 262-1599	<i>starmank@nova.edu</i>
Larry Starr	Assistant AD for Sports Medicine	(954) 262-8260	<i>lstarry@nova.edu</i>
Beverley Welker	Assistant to the Director	(954) 262-8252	<i>welkerb@nova.edu</i>

### Baseball

Michael Mominney	Head Coach	(954) 262-8252	<i>mominney@nova.edu</i>
Raymond Romero	Assistant Coach	(954) 262-8257	<i>romero@nova.edu</i>
Ryan Romero	Assistant Coach	(954) 262-8259	<i>rromero@nova.edu</i>
Miguel "Bookie" Nunez	Assistant Coach	(954) 262-8257	

### Men's Basketball

Tony McAndrews	Head Coach	(954) 262-8263	<i>tonym@nova.edu</i>
Michael Balado	Assistant Coach	(954) 262-8241	
Marquise Kiffin	Assistant Coach	(954) 262-8241	
Jim Darr	Assistant Coach	(954) 262-8263	

### Women's Basketball

Marilyn Rule-Heinrich	Head Coach	(954) 262-8078	<i>rulem@nova.edu</i>
Jeff Heinrich	Assistant Coach	(954) 262-8078	
Lindsey Sensesbrenner	Assistant Coach	(954) 262-8221	<i>sensesbr@nova.edu</i>

### Cheerleading

Shannon Cain	Head Coach	(954) 262-8266	<i>cain@nova.edu</i>
--------------	------------	----------------	----------------------

### Women's Cross Country

Bruce McCrea	Head Coach	(954) 262-8250	
--------------	------------	----------------	--

### Men's and Women's Golf

Duke Donahue	Head Coach	(954) 262-8268	<i>ddonahue@nova.edu</i>
Leigh Many	Assistant Coach	(954) 262-8268	

### Softball

Lesa Boneé	Head Coach	(954) 262-8258	
------------	------------	----------------	--

### Men's Soccer

Joe DePalo	Head Coach	(954) 262-8255	<i>depalog@nova.edu</i>
Dan McNally	Assistant Coach	(954) 262-8228	<i>mcnallyd@nova.edu</i>
Leo Vega	Assistant Coach	(954) 262-8255	

### Women's Soccer

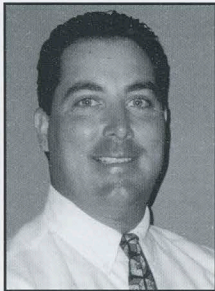
Mike Goodrich	Head Coach	(954) 262-8270	<i>goodm@nova.edu</i>
Alicia Waag	Assistant Coach	(954) 262-8272	<i>alicianw@nova.edu</i>

### Volleyball

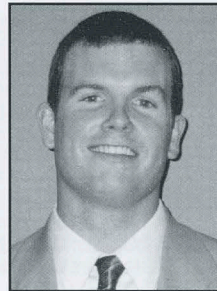
Lori Rembe	Head Coach	(954) 262-8264	<i>rembel@nova.edu</i>
Lisa Rembe	Assistant Coach	(954) 262-8226	



## Staff



**Michael Mominey**  
Interim Director of Athletics



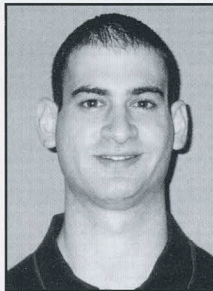
**Rob Allen**  
Assistant Athletic Director/  
Business Operations



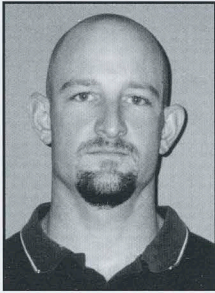
**Nino Berticelli**  
Coordinator of Athletic  
Academic Services



**Shannon Cain**  
Assistant Athletic Director/Compliance/  
Senior Women's Administration



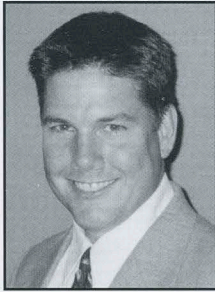
**Todd Gittleman**  
Assistant Sports Information Director



**Shane Levenson**  
Head Athletic Trainer



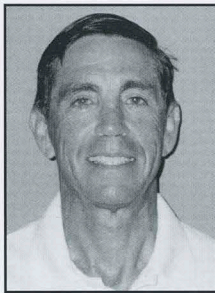
**Patricia Marshall**  
Assistant Athletic Trainer



**Robert Prior**  
Sports Information Director



**Kim Starman**  
Assistant Sports Information Director



**Larry Starr**  
M.D., ATC/L, CSCS, USPTA  
Assistant Athletic Director/  
Sports Medicine

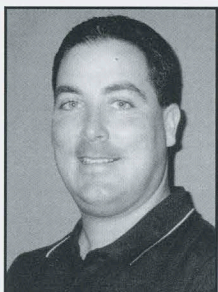


**Beverly Welker**  
Assistant to the Interim Director  
of Athletics

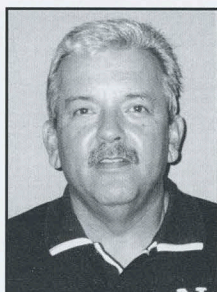




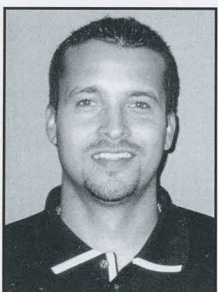
## Coaches



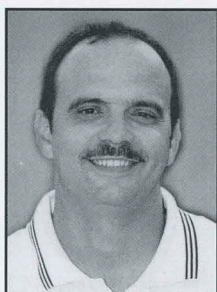
**Michael Mominey**  
Head Coach  
Baseball



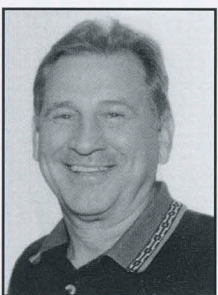
**Ray Romero**  
Assistant Coach  
Baseball



**Ryan Romero**  
Assistant Coach  
Baseball



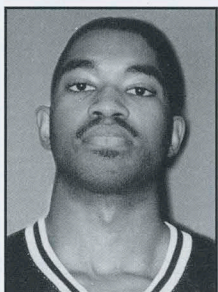
**Miguel "Bookie" Nunez**  
Assistant Coach  
Baseball



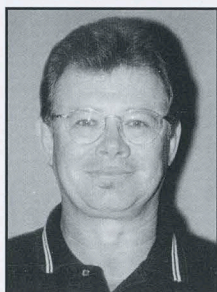
**Tony McAndrews**  
Head Coach  
Men's Basketball



**Mike Balado**  
Assistant Coach  
Men's Basketball



**Marquise Kiffin**  
Assistant Coach  
Men's Basketball



**Jim Darr**  
Assistant Coach  
Men's Basketball



**Marilyn Rule-Heinrich**  
Head Coach  
Women's Basketball



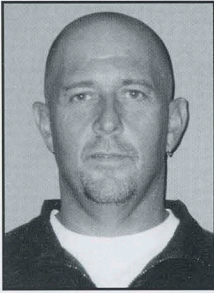
**Jeff Heinrich**  
Assistant Coach  
Women's Basketball



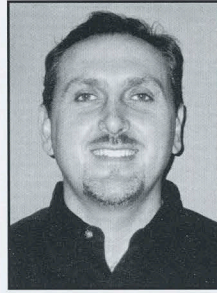
**Lindsey Sensenbrenner**  
Assistant Coach  
Women's Basketball



**Shannon Cain**  
Head Coach  
Cheerleading



**Bruce McCrea**  
Head Coach  
Women's Cross Country



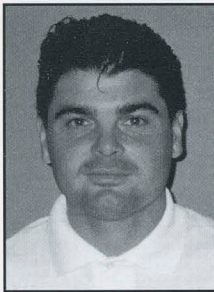
**Duke Donahue**  
Head Coach  
Men's and Women's Golf



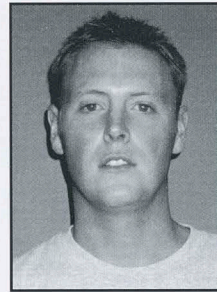
**Leigh Many**  
Assistant Coach  
Men's and Women's Golf



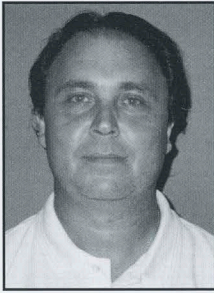
**Lesa Boneé**  
Head Coach  
Softball



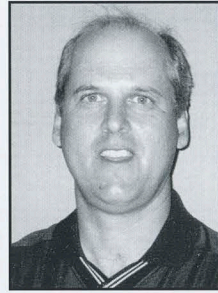
**Joe DePalo**  
Head Coach  
Men's Soccer



**Dan McNally**  
Assistant Coach  
Men's Soccer



**Leo Vega**  
Assistant Coach  
Men's Soccer



**Mike Goodrich**  
Head Coach  
Women's Soccer



**Alicia Waag**  
Assistant Coach  
Women's Soccer



**Lori Rembe**  
Head Coach  
Volleyball



**Lisa Rembe**  
Assistant Coach  
Volleyball

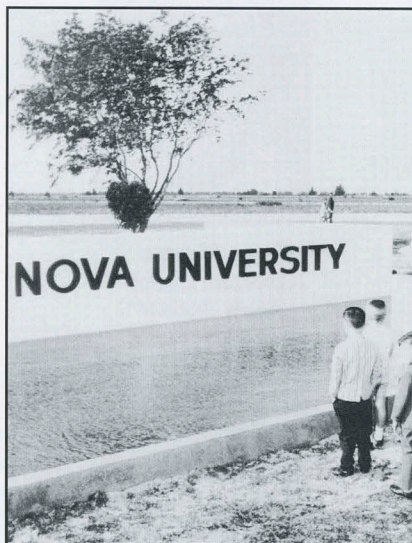


### NSU Overview

#### 1960-1970

When the first class of 17 graduate students enrolled in Nova University of Advanced Technology on Monday, September 25, 1967, the campus in Davie, Florida still looked more like the abandoned naval airfield it had once been than like the campus of what aspired to be "the MIT of the South." Only the Rosenthal Building had been completed. The shell of the Parker Building was under construction. The rest of the campus was barren, acre after acre of weeds and sand relieved here and there by some of the original tarmac.

With only one permanent building ready for occupancy on the 300-acre campus, after the formalities of registration and orientation, faculty members and students went to Rolling Hills Country Club for lunch and then met in groups, based upon their areas of specialization. Science education students went back to Rosenthal; physics and chemistry students went to the university's temporary laboratories in the 400 block of East Las Olas Boulevard; and oceanography students went to the houseboat laboratories at Southeast 15th Street.



**Nova University's 300-acre campus in Davie, Florida, looked more like the abandoned naval airfield it had once been. The campus was barren, acre after acre of weeds and sand relieved here and there by some of the original tarmac.**

Chartered by the state of Florida on December 4, 1964, by opening day 1967, Nova University boasted assets, contributions, and pledges of \$10 million. A total of \$125,000 had been raised and paid to the federal government as an installment on what became the university's 300-acre campus. James Farquhar, the university's first chairman of the board, donated 100 acres adjacent to the campus—a gift valued at in excess of \$500,000. Mr. and Mrs. W.C. Mather and the Bailey Foundation donated a 100-acre parcel of land in Hollywood valued at \$400,000. Ten acres at Port Everglades for the oceanographic laboratory were deeded to the university by the Broward County Commission.

The university represented a great hope for higher education in South Florida, an institution that would keep the best and the brightest at home and attract the most promising faculty members and students from around the country to a great seat of learning in a rapidly developing region of the United States. By stressing the importance of science and technology, it would provide the kind of leadership that was needed to help bring the United States into a competitive position in the conquest of



space, the new frontier of the 1960s. Nova University would be in a position to provide fresh approaches to the process of teaching, learning, and doing research. Nova could also serve as a catalyst in developing and implementing educational models that could be applied in its neighboring schools and then nationwide.

University officials knew that from the opening day, all eyes would be focused on the faculty, the students, and the campus. More time, energy, and money had probably been invested in the first 17 students than had been spent on any other students in the United States. They had been selected from 250 applicants from all over the country. They were all doctoral students and had been given free tuition, as well as stipends up to \$5,000 for living expenses. On top of that, it took 68 staff, 17 faculty, and an annual budget of \$1.7 million to run the university that year.

### 1970–1985

In 1970, the university was in danger of closing its doors for good. Nova University was given candidate status and was accredited (1971) by the Southern Association of Colleges and Schools (SACS). Students continued to enroll. Faculty taught and engaged in research, but the university's existence suffered from an acute lack of operating dollars. Nova had land and buildings that had been generously donated, but needed money to keep the lights on. The economic model upon which the university was established committed it to an ongoing need for outside funding, research grants, and private donations of enormous proportions (not tuition).

On June 23, 1970, the board of trustees voted to enter into a federation with the New York Institute of Technology. Alexander Schure, president of NYIT, became chancellor of Nova University. Abraham S. Fischler became president. NYIT paid Nova \$1.2 million that enabled the university to pay off the bulk of its operating debt. The university charter was amended and "of Advanced Technology" was dropped from its corporate name.

During the 15 years of the federation, the whole concept of Nova's student body, programs, and campus changed. Unable to survive with a score of students on a few hundred acres in Davie, the university did what any smart business would do: it looked for student markets where it could find them and found ways "to bring the campus to the student."

The university developed new programs and expanded beyond the limits of its campus and South Florida. Across the country, hundreds of adult, working professionals in school systems, government agencies, and businesses were now able to earn advanced degrees without quitting their jobs and becoming full-time students. Few colleges and universities offered evening and weekend programs that fit their schedules. Nova had clearly found a market niche.

On campus, undergraduate evening programs for adults began; the law school was opened in 1974; and a host of master's programs in business, psychology, and education continued to be developed.



Unfortunately, by the mid-1970s, the national programs that it had pioneered and implemented created a backlash of negative publicity from coast to coast. As Nova programs in various states became more public and visible, local institutions began to complain to state officials that an out-of-state university had no business coming onto their turf. They looked upon Nova's degree requirements with suspicion and contempt, and set about to precipitate regulations and even legislation that would make it difficult, if not impossible, for Nova to operate.

To defend its programs and students, Nova ultimately resorted to major litigation. In 1976, the university received a \$16 million gift from the estate of Leo Goodwin Sr., but only after three years of suits and countersuits over its affiliation with NYIT. The litigation generated a tangled web of local and national press and negative public opinion. From 1979 to 1985, when the federation with NYIT was dissolved, Nova was heavily engaged in damage control, as well as in campus and program expansion. The vacancies on the board created after the resignation of the NYIT trustees were gradually filled by South Florida community leaders, putting the stewardship of Nova back in the hands of its own local board.

### 1985 to Present

The Nova University that emerged in 1985 was committed to incorporating new educational technologies made possible by computers and telecommunications into the teaching and learning process and into its delivery of education. A network of students online at their computers redefined what a classroom is. Communicating across time zones, linked to a professor who can be on campus or anywhere, students across the United States and even in foreign countries turn one-dimensional computer screens into fields for academic discussion.



NSU's Horvitz Administration Building

In 1989, celebrating its 25th year, Nova University was enrolling more than 8,000 students and had nearly 25,000 graduates, with revenues of nearly \$70 million. Over the next five years, three new buildings were constructed and a campus-wide beautification campaign added landscaping that greatly changed the look of the campus.

In 1994, Nova University merged with Southeastern University of the Health Sciences to form Nova Southeastern University (NSU), adding the Colleges of Osteopathic Medicine, Pharmacy, Optometry, and Allied Health to the university. The university continued its expansion of building projects and added new academic, clinical, and community service programs.



**NSU's Library, Research, and Information Technology Center, a joint-use facility with the Broward County Board of County Commissioners.**

By 1999, at the 35th anniversary, the university was enjoying an era of sustained growth, facilitated by a healthy infusion of endowment funds and a nearly 1,000-student increase in enrollment between fall 1998 and fall 1999. Over the past five years, NSU's enrollment has increased approximately 27 percent; full-time members of the faculty, staff and administration have expanded to almost 2,600; and minority representation among faculty and staff members and students continues to expand.

In 2002, with a fall enrollment of more than 21,000, NSU is the largest independent institution of higher education in the Southeast and 12th largest independent university nationally. It is the largest of the 67 independent institutions in Florida with an operating budget of approximately \$280 million. To date, the institution has produced more than 73,000 alumni. Courses of study lead to associate's, bachelor's, master's, specialist, and doctoral degrees. The university's programs are administered through academic centers that offer courses at the Fort Lauderdale campus, as well as at locations throughout Florida, across the nation, and at selected international sites in the Caribbean, Canada, China, the Dominican Republic, England, France, Greece, Panama, Puerto Rico, and Venezuela.





## NSU Degree Offerings

### Fischler Graduate School of Education and Human Services

A.A. Early Childhood Education  
M.A. Teaching and Learning  
M.S. Education (33 specializations)  
M.S. Human Services (4 specializations)  
M.S. Instructional Technology and Distance Education  
M.S. Speech-Language Pathology  
Ed.S. Educational Specialist (18 specializations)  
Ed.D. Child and Youth Studies  
Ed.D. Educational Leadership  
Ed.D. Higher Education (5 specializations)  
Ed.D. Instructional Technology and Distance Education  
Ed.D. Organizational Leadership  
SLP.D. Doctor of Speech-Language Pathology

### H. Wayne Huizenga School of Business and Entrepreneurship

M.Acc. Master of Accounting  
M.B.A. Business Administration  
M.B.A. eBusiness  
M.B.A. Health Services Administration  
M.I.B.A. Master of International Business Administration  
M.P.A. Master of Public Administration  
M.S. Human Resource Management  
M.S. Taxation  
D.B.A. Doctor of Business Administration  
D.I.B.A. Doctor of International Business Administration  
D.P.A. Doctor of Public Administration

### Health Professions Division

B.S./M.M.S. Physician Assistant  
M.B.S. Biomedical Sciences  
M.M.S. Medical Science  
M.O.T. Occupational Therapy  
M.P.T. Physical Therapy  
M.P.H. Public Health  
M.S. Clinical Vision Research  
Au.D. Doctor of Audiology  
D.H.Sc. Doctor of Health Sciences  
D.M.D. Dental Medicine  
D.O. Osteopathic Medicine  
O.D. Optometry  
O.T.D. Doctor of Occupational Therapy  
Pharm.D. Doctor of Pharmacy  
Ph.D. Occupational Therapy  
Ph.D. Physical Therapy

### Shepard Broad Law Center

M.H.L. Health Law  
J.D. Law



### **Graduate School of Computer and Information Sciences**

M.S. Computer Information Systems  
M.S. Computer Science  
M.S. Computing Technology in Education  
M.S. Management Information Systems  
Ph.D. Computer Information Systems  
Ph.D. Computer Science  
Ph.D./Ed.D. Computing Technology in Education  
Ph.D. Information Science  
Ph.D. Information Systems

### **Graduate School of Humanities and Social Sciences**

M.S. Conflict Analysis and Resolution  
M.S. Family Therapy  
Ph.D. Conflict Analysis and Resolution  
Ph.D. Family Therapy

### **Oceanographic Center**

M.S. Coastal Zone Management  
M.S. Marine Biology  
M.S. Marine Environmental Sciences  
Ph.D. Oceanography/Marine Biology

### **Center for Psychological Studies**

M.S. Clinical Psychopharmacology (Postdoctoral master's degree)  
M.S. Mental Health Counseling  
M.S. School Guidance and Counseling  
Ph.D. Clinical Psychology  
Psy.D. Clinical Psychology  
Psy.S. School Psychology  
Cross-Center Programs  
M.S. Criminal Justice

### **Farquhar Center for Undergraduate Studies**

B.A. Humanities  
B.S. Accounting  
B.S. Applied Professional Studies  
B.S. Biology (premedical)  
B.S. Business Administration  
B.S. Computer Information Systems  
B.S. Computer Science  
B.S. Early Childhood Education  
B.S. Elementary Education  
B.S. Environmental Science/Studies  
B.S. Exceptional Education  
B.S. Finance  
B.S. Legal Studies (prelaw)  
B.S. Marine Biology  
B.S. Paralegal Studies  
B.S. Professional Management  
B.S. Psychology  
B.S. Sport and Wellness Studies



## Athletic Facilities

### NSU Soccer Complex

The NSU Soccer Complex consists of two practice fields and one game field. The game field is home for both the men's and women's soccer teams. All three fields come equipped with lights that allow for night practices and games. The game field features state-of-the-art grandstand seating with capacity for 1,000 spectators. The stadium style seating is the newest addition to the complex, which was built prior to the 2000 season. The U.S. Women's National Soccer Team and several MLS teams including the Miami Fusion have all used the NSU soccer complex as their training site.



### NSU Baseball Complex

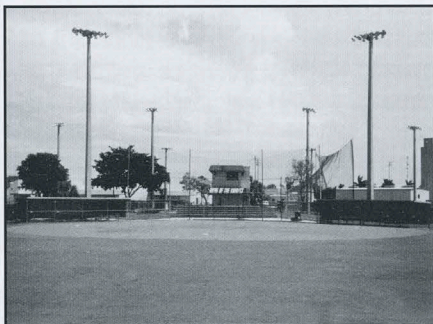
The NSU Baseball Complex is considered by many to be one of the finest baseball facilities in South Florida. This fully lit complex features an immaculate playing field with two outdoor batting cages. Prior to the 2001 season, NSU added grandstand seating that accommodates 500 people and a fully functional press box. The NSU Baseball Complex is the site of The Frontier Independent Baseball League's annual player combine and tryouts.





### **A.D. Griffin Sports Complex**

The A.D. Griffin Sports Complex is home to the NSU softball team. This complex features two practice fields and one game field. All fields are equipped with lights that allow for night practices and games. The main game field overlooks NSU's Health Professions Building. Located in the middle of the three fields is the press box area. The A.D. Griffin Sports Complex was named in honor of A.D. Griffin, Sr.



### **George Mayer Gymnasium and University School Gymnasium**

Volleyball and basketball games and practices are held in the George Mayer Gymnasium and in the University School Gymnasium. The George Mayer Gymnasium (capacity: 1000) is located on Broward Community College's Central Campus in Davie, Florida. Indoor athletic events take place at BCC unless it is occupied by BCC athletic teams. When BCC's gym is unavailable, events take place in the University School Gymnasium, which is located on NSU's main campus in Davie.

In the future, indoor activities will take place in NSU's state-of-the-art University Center and Intercollegiate Field House, scheduled for ground breaking during the 2003–2004 school year. Future home to NSU's men's and women's basketball and women's volleyball, it will house the athletics department, fitness and rehab center, weightroom, locker rooms, and will offer many other attractive amenities.

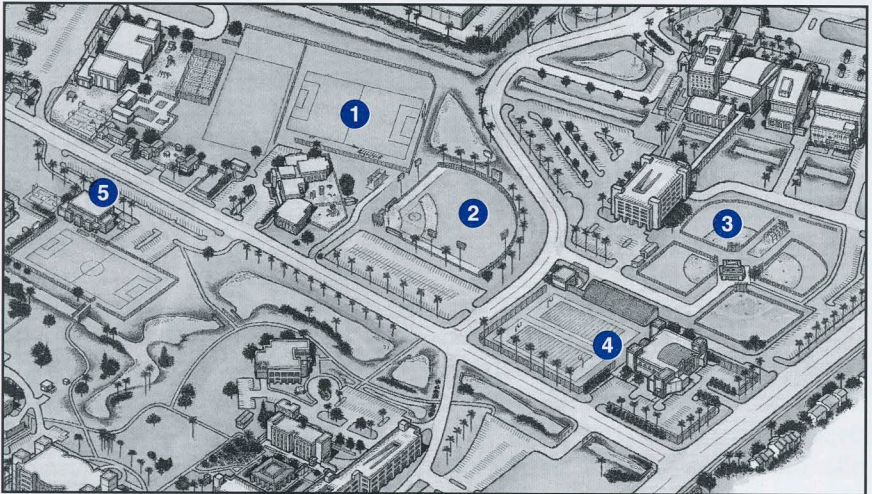


## **Miami Dolphins Training Facility**

The Miami Dolphins Training Facility is located on the Nova Southeastern University main campus. Bow string trusses and a profile reminiscent of classic athletic facilities define this state-of-the-art training facility for the Miami Dolphins football team, which includes one of the largest weight rooms in the NFL, training rooms, locker rooms, a therapy swimming pool, a cold plunge pool, whirlpools, numerous administrative offices, and a practice field. It also has a bleacher building, which can accommodate 2,000 spectators. The 56,000-square-foot facility is frequently used as a prototype for other professional football teams.



## **NSU Athletic Facilities Map**



- 1** NSU Soccer Complex
- 2** NSU Baseball Complex
- 3** A.D. Griffin Sports Complex
- 4** Miami Dolphins Training Facility
- 5** University School Gymnasium

**NCAA****NCAA**<sup>®</sup>

The National Collegiate Athletic Association is the organization through which the nation's colleges and universities speak and act on athletics matters at the national level. It is a voluntary association of approximately 1,200 institutions, conferences, organizations, and individuals devoted to the sound administration of intercollegiate athletics.

Through the NCAA, member colleges consider any athletics problem that crosses regional or conference lines and has become national in character. The association strives to maintain intercollegiate athletics as an integral part of the educational program and the athlete as an integral part of the student body. The NCAA also stands for good conduct in intercollegiate athletics and serves as the colleges' national athletics accrediting agency.

The NCAA has grown dramatically in the past 40 years, with more than 600 new members since 1950.

## **NCAA Division II**

Division II institutions have to sponsor at least four sports for men and four for women, with two team sports for each gender, and each playing season represented by each gender. There are contest and participant minimums for each sport, as well as scheduling criteria—football and men's and women's basketball teams must play at least 50 percent of their games against Division II or I-A or I-AA opponents. For sports other than football and basketball there are no scheduling requirements. There are no attendance requirements for football, or arena game requirements for basketball. There are maximum financial aid awards for each sport that a Division II school must not exceed. Division II teams usually feature a number of local or in-state student-athletes. Many Division II student-athletes pay for school through a combination of scholarship money, grants, student loans and employment earnings. Division II athletics programs are financed in the institution's budget like other academic departments on campus. Traditional rivalries with regional institutions dominate schedules of many Division II athletics programs.



### Division II Philosophy Statement

In addition to the purposes and fundamental policy of the National Collegiate Athletic Association, as set forth in Constitution 1, members of Division II believe that a well-conducted intercollegiate athletics program, based on sound educational principles and practices, is a proper part of the educational mission of a university or college and that the educational welfare of the participating student-athlete is of primary concern.

Members of Division II support the following principles in the belief that these objectives assist in defining the division and the possible differences between it and other divisions of the association. This statement is not binding on member institutions, but shall serve as a guide for the preparation of legislation by the division and for planning and implementation of programs by institutions and conferences. A member of Division II:

- Believes in offering a maximum amount of intercollegiate athletics participation to as many of its students as possible, whether or not these students are athletically recruited or financially assisted
- Believes in striving for broad, equitable participation and competitive excellence, encouraging sportsmanship and ethical conduct and developing positive societal attitudes in all of its athletic endeavors
- Believes in scheduling the majority of its athletics competition with other members of Division II, insofar as regional qualification, geographical location, and traditional or conference scheduling patterns permit
- Recognizes the dual objectives in its athletics program of serving both the campus (participants, student body, faculty-staff) and the general public (community, area, state)
- Believes in offering opportunity for participation in intercollegiate athletics permitting athletically related financial aid for its student-athletes, but on a more modest basis than that permitted in Division I
- Believes that all members of Division II, including those institutions aspiring to membership in some other division or those unable to subscribe to all of the aspects of the Division II philosophy, should commit themselves to this philosophy and to the regulations and programs of Division II



## Sunshine State Conference

SUNSHINE  
STATE  
CONFERENCE

### Division II “Conference of National Champions”

Currently one of the most competitive and respected conferences in NCAA Division II, the Sunshine State Conference (SSC) was founded in 1975. SSC schools captured four national championships in 2001–2002 and have earned 54 national championships.

The Sunshine State Conference has developed from a basketball organization into the NCAA Division II “Conference of National Champions.” Since its inception, the conference has grown steadily in sports played, membership, and national prominence.

Sunshine State Conference teams have won NCAA Division II national championships in baseball, men’s basketball, men’s and women’s golf, men’s and women’s soccer, softball, men’s and women’s tennis, and volleyball.

The SSC sponsors championships in 14 sports for men and women: baseball, men’s and women’s basketball, men’s and women’s cross-country, men’s and women’s golf, men’s and women’s soccer, softball, men’s and women’s tennis, women’s rowing, and volleyball.

Nova Southeastern University was officially granted membership status in the Sunshine State Conference in August 2002. Other SSC members—all in Florida—are Barry University (Miami Shores), Eckerd College (St. Petersburg), Florida Tech (Melbourne), Florida Southern College (Lakeland), Lynn University (Boca Raton), Rollins College (Winter Park), Saint Leo College (Saint Leo), and the University of Tampa (Tampa).

Numerous All-Americans, Academic All-Americans, and future professional athletes have attended conference institutions. The SSC is respected for its academic foresight, setting standards which were later adopted by the NCAA.





## SSC OPPONENTS

### BARRY UNIVERSITY

11300 NE 2nd Avenue  
Miami, FL 33161-6628  
Founded: 1940  
Enrollment: 8,650  
Nickname: Buccaneers  
Colors: Black, red, silver  
Athletic Phone: (305) 899-3550  
Athletic Fax: (305) 899-3556  
President: Sr. Jeanne O'Laughlin,  
O.P., Ph.D.  
Athletic Director: Mike Covone  
Office Phone: (305) 899-3551  
Email: [mcovone@mail.barry.edu](mailto:mcovone@mail.barry.edu)  
SID: Dennis Jezek, Jr.  
Office Phone: (305) 899-3897  
Email: [djezek@mail.barry.edu](mailto:djezek@mail.barry.edu)  
Athletic Web site:  
[www.barry.edu/athletics](http://www.barry.edu/athletics)

### FLORIDA SOUTHERN COLLEGE

111 Lake Hollingsworth Drive  
Lakeland, FL 33801-5698  
Founded: 1885  
Enrollment: 1,600  
Nickname: Moccasins  
Colors: Scarlet, white  
Athletic Phone: (863) 680-4244  
Athletic Fax: (863) 680-4122  
President: Thomas Reuschling  
Athletic Director: Lois Webb  
Office Phone: (863) 680-4254  
Email: [lwebb@flosouthern.edu](mailto:lwebb@flosouthern.edu)  
SID: Tim Carpenter  
Office Phone: (863) 680-3955  
Email: [ffltim@aol.com](mailto:ffltim@aol.com)  
Athletic Web site:  
[www.flosouthern.edu/sid](http://www.flosouthern.edu/sid)

### ECKERD COLLEGE

4200 54th Avenue South  
St. Petersburg, FL 33711-4744  
Founded: 1958  
Enrollment: 1,538  
Nickname: Tritons  
Colors: Red, white, black  
Athletic Phone: (727) 864-8251  
Athletic Fax: (727) 864-8968  
President: Donald Eastman  
Athletic Director: George Meese  
Office Phone: (727) 864-8252  
Email: [meesegp@eckerd.edu](mailto:meesegp@eckerd.edu)  
SID: Katherine Turnbow  
Office Phone: (727) 864-8242  
Email: [turnboka@eckerd.edu](mailto:turnboka@eckerd.edu)  
Athletic Web site:  
[www.eckerd.edu/athletics](http://www.eckerd.edu/athletics)

### FLORIDA TECH

150 West University Blvd.  
Melbourne, FL 32901-6982  
Founded: 1958  
Enrollment: 4,200  
Nickname: Panthers  
Colors: Crimson, gray  
Athletic Phone: (321) 674-8032  
Athletic Fax: (321) 984-8529  
President: Anthony Catanese  
Athletic Director: William Jurgens  
Office Phone: (321) 674-8032  
Email: [bjurgens@fit.edu](mailto:bjurgens@fit.edu)  
SID: Christa Parulis  
Office Phone: (321) 674-7484  
Email: [cparulis@fit.edu](mailto:cparulis@fit.edu)  
Athletic Web site:  
[www.fit.edu/athletics](http://www.fit.edu/athletics)



**LYNN UNIVERSITY**

3601 North Military Trail  
De Hoernle Sports and  
Cultural Center  
Boca Raton, FL 33431-5507  
Founded: 1962  
Enrollment: 1,400  
Nickname: Fighting Knights  
Colors: Royal blue, white  
Athletic Phone: (561) 237-7274  
Athletic Fax: (561) 237-7283  
President: Donald E. Ross  
Athletic Director: John McCarthy  
Office Phone: (561) 237-7280  
SID: Jeff Shally  
Office Phone: (561) 237-7765  
Athletic Web site:  
[www.lynn.edu/athletics](http://www.lynn.edu/athletics)

**ST. LEO UNIVERSITY**

MC 2038 Box 6665  
St. Leo, FL 33574  
Founded: 1890  
Enrollment: 1,000  
Nickname: Lions  
Colors: Forest green, white  
Athletic Phone: (352) 588-8221  
Athletic Fax: (352) 588-8290  
President: Arthur Kirk  
Athletic Director: Fran Reidy  
Office Phone: (352) 588-8246  
Email: [fran.reidy@saintleo.edu](mailto:fran.reidy@saintleo.edu)  
SID: Walter Riddle  
Office Phone: (352) 588-8506  
Email: [walt.riddle@saintleo.edu](mailto:walt.riddle@saintleo.edu)  
Athletic Web site:  
[www.saintleo.edu/athletics](http://www.saintleo.edu/athletics)

**ROLLINS COLLEGE**

1000 Holt Avenue Box 2730  
Winter Park, FL 32789-4999  
Founded: 1885  
Enrollment: 1,440  
Nickname: Tars  
Colors: Royal blue, gold  
Athletic Phone: (407) 646-2366  
Athletic Fax: (407) 646-1562  
Athletic Director: J. Phillip Roach  
Office Phone: (407) 646-2198  
Email: [proach@rollins.edu](mailto:proach@rollins.edu)  
SID: Steve Harris and  
Karen Auerbach  
Office Phone: (407) 646-2663  
Athletic Web site:  
[www.rollins.edu/athletics](http://www.rollins.edu/athletics)

**UNIVERSITY OF TAMPA**

401 West Kennedy Blvd., Box 1  
Tampa, FL 33606-1450  
Founded: 1933  
Enrollment: 4,000  
Nickname: Spartans  
Colors: Scarlet, black, gold  
Athletic Phone: (813) 253-6240  
Athletic Fax: (813) 253-6288  
President: Ronald Vaughn  
Athletic Director: Larry Marfise  
Office Phone: (813) 253-3307  
Email: [lmarfise@ut.edu](mailto:lmarfise@ut.edu)  
SID: Gil Swalls  
Office Phone: (813) 253-6241  
Email: [gswalls@ut.edu](mailto:gswalls@ut.edu)  
Athletic Web site:  
[www.utampa.edu/athletics](http://www.utampa.edu/athletics)



## 2002 NSU Knights Women's Soccer Roster

NO.	NAME	POS	CL	HGT	HOMETOWN/PREVIOUS SCHOOL
1	Katie Wintle	GK	SO	5-7	Coral Springs, FL/Taravella High
2	Kelly O'Brien	M	FR	5-4	Ormond Beach, FL/Seabreeze High
3	Shayla Ruddock	F	FR	5-8	Plantation, FL/American Heritage
4	Rebecca Harrison	F	JR	5-10	Coral Springs, FL/Douglas High
5	Karrie Ripple	D	JR	5-10	Coral Springs, FL/Cardinal Gibbons
6	Meghan Towne	D	FR	5-9	Royal Palm Beach, FL/Suncoast High
7	Sarah Wruble	M	FR	5-5	Coral Springs, FL/American Heritage
8	Kim Browne	D	FR	5-7	Downingtown, PA/Downingtown Senior
9	Krystal Lamb	D	JR	5-6	West Palm Beach, FL/John I Leonard
10	Dawn Banford	M	SO	5-6	Glasgow, Scotland/St. Thomas Univ.
11	Kelly Harding	M	JR	5-5	Winter Garden, FL/West Orange High
12	Rachel Provenzano	GK	FR	5-6	Ormond Beach, FL/Seabreeze High
14	Cortney Reid	M	FR	5-4	Deerfield Beach, FL/Cardinal Gibbons
15	Nicole LePage	M	JR	5-7	Cohoes, NY/Cohoes High
16	Katya Delgado	F	SO	5-4	West Palm Beach, FL/Lake Worth High
17	Alexis Sasso	D	FR	5-0	Coral Springs, FL/Douglas High
18	Renee Massie	D	SO	5-5	Seminole, FL/Seminole High
19	Tatiana Fabricio	M	FR	5-5	Weston, FL/Western High
22	Laura Sabbagh	D	FR	5-6	Miami Lakes, FL/American Heritage
23	Jenni McDonough	D	JR	5-5	Ponce Inlet, FL/Spruce Creek High
24	Kerry Smith	M	FR	5-8	Leeds, UK

Head Coach Mike Goodrich (4th Season; 28-30-1)  
 Asst. Coach Alicia Waag (3rd Season)

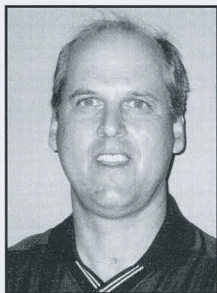


2002 captains: Rebecca Harrison, Jenni McDonough, and Dawn Banford



## 2002 NSU Women's Soccer

### Mike Goodrich Head Coach



Mike Goodrich enters his fourth season as head coach of the women's soccer team. He is looking to build with a nucleus of young players, and his sights are set on making another successful showing in the postseason.

In 2000, Goodrich guided his team to an NSU best—16-6 overall record and an 11-3 second place conference finish—en route to being named Florida Sun Conference Coach of the Year.

Last year's side battled through an up and down campaign, before bowing out to Embry-Riddle by a 3-1 score in the Region XIV semi-final.

Goodrich, a South Florida resident for much of his life, began his soccer career playing local at Pompano Beach High School. He enrolled at Stetson University, where he excelled as a player, receiving various honors during his stint with the Hatters (Most Consistent Player as a sophomore, team captain and Defensive Player of the Year as a junior). While at Stetson, Goodrich first ventured into coaching as an assistant with the DeLand High School boy's soccer team.

After graduating from Stetson with a bachelor's degree in history, Goodrich became a recreation programmer for the city of Pompano Beach from 1989–95. He was responsible for coordinating numerous events and programs such as the Cheetos Challenge, National Boys Football Super Bowl, Triple Crown Softball Championships, and various camps and clinics. He also co-founded and established Athletic Management Group, Inc.; an athletic and event management company dedicated to the creation, development, and enhancement of recreation and sporting events.

In 1994, Goodrich was named boy's varsity head coach at Ely High School. Goodrich inherited a program that had been winless its' previous four years. He transformed the Tigers into a respectable 10-6-2 club in his second year at the helm. Goodrich's immediate success led to his being named head coach of Cardinal Gibbons' boys squad.

After his immediate success at Ely, he was named head coach of Cardinal Gibbons boys squad. During his three-year stay with the Redskins, Goodrich compiled a 54-10-10 record, leading Cardinal Gibbons to three straight district crowns and three regional play-off appearances. He also took Gibbons to the 1996 Class 4A championship game and was named Broward County's Coach of the Year.

Goodrich resides in Coral Springs with his wife, Joan, and children Regina, 10, and Patrick, 6.

Alma mater/year: Stetson University, 1986

Record at NSU: 28-30-1

Career record: 28-30-1

Office phone: (954) 262-8270

Email: [goodm@nova.edu](mailto:goodm@nova.edu)



### **Alicia Waag** Assistant Coach

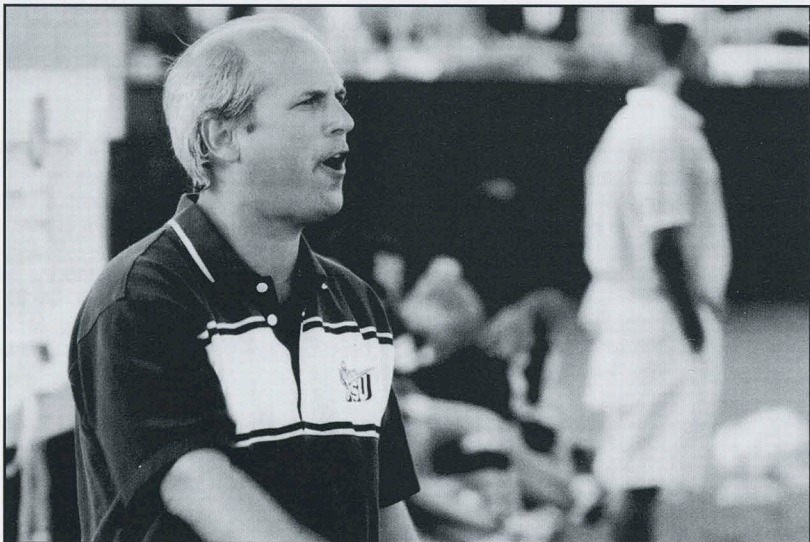


Alicia Waag enters her third season with the Knights after joining NSU's Athletics Staff in 2000. She holds an NSCAA National Diploma. She also coaches at St. Thomas Aquinas High School and for the Coral Springs Storm U-13 girls team.

Waag was a local standout, playing for the state and national champion St. Thomas Aquinas High School girls soccer program from 1993–96. After high school, she was a four-year starter for Boston University. While playing in Boston, she earned numerous honors including America

East All-Conference, All-Tournament, and All-Academic Teams. She was also voted Boston University's MVP on defense and stood out academically as a member of the Dean's List.

Alicia graduated from BU in 2000 with a bachelor's degree in education and is currently attending NSU, pursuing an M.B.A. in finance and business.



NSU Women's Soccer head coach Mike Goodrich



## 2002 Women's Soccer Outlook

### Head Coach Mike Goodrich Evaluates the 2002 Knights

Without question I am thrilled about the upcoming season for a variety of reasons. First, we are moving to NCAA Division II status. The move from the NAIA to the NCAA has been a long and sometimes arduous process. In any event, I am excited about the future, both imminent and long range for our department, school and program. On the field I am extremely ecstatic for this season, taking into account our returning players and our new additions.

#### Goalkeepers

We have two keepers on this year's squad. **Katie Wintle** (Sophomore, Coral Springs, FL), who saw extensive playing time last season and will be counted upon for her experience this year as well as in the future. Our new addition is **Rachel Provenzano** (Freshman, Ormond Beach, FL). Named All-Conference this past prep season and MVP of the prestigious Michelle Akers Tournament, Rachel is a very athletic, intelligent and talented keeper. Without question, our goalkeeping position will be the most competitive and prove to be a cornerstone of our team.

#### Defenders

With a mixture of returners and newcomers, this area of the team will be equally as competitive as goalkeeping. **Renee Massie** (Sophomore, Seminole, FL) returns after an impressive freshman season. Voted the Most Improved Player last year, Renee improved throughout the season and during the spring as well. **Jenni McDonough** (Junior, Ponce Inlet, FL) returns after playing extensively in the back last season. Jenni is a physically tough defender whose maturity and leadership abilities will be counted upon this fall. Also returning is **Krystal Lamb** (Junior, West Palm Beach, FL) with a new position. Formerly a goalkeeper with the Knights, Krystal has set her sights on the field. Our newcomers include **Kelly O'Brien** (Freshman, Ormond Beach, FL). An award winning midfielder at perennial state power Seabreeze High School, where she teamed with Rachel Provenzano, Kelly brings a tenacious attitude and tireless work ethic to the team. Technically sound, Kelly will be an outstanding addition to this year's team. **Meghan Towne** (Freshman, Royal Palm Beach, FL) combines size, speed, and power. A devastating tackler, she is a dynamic addition to the Knights roster.



**Alexis Sasso** (Freshman, Coral Springs, FL) is a very quick and driven player. A graduate of an extremely successful prep program, Alexis knows what it takes to win and is willing to do whatever is asked of her. **Laura Sabbagh** (Freshman, Miami Lakes, FL) has experienced quite a bit of winning during her prep career. A member of the three-time state champions, Laura is an intelligent and crafty defender.

### Midfielders

Given the graduation of most of last year's midfielders, this was an area that we recruited heavily for this year. Our only returning midfielder is **Kelly Harding** (Junior, Winter Garden, FL). Kelly was injured most of last year and we are hopeful that she can fully return to the field this season. Former goalkeeper **Karrie Ripple** (Junior, Coral Springs, FL) has shifted into the field and will provide added support and leadership to the midfield. We added a core of midfielders including a sophomore transfer in **Dawn Banford**. Originally from Scotland, where she competed at the National level, Dawn is an excellent attacking player with great vision and technical abilities. Additionally, she has a keen soccer mind and we will count on all of her abilities this fall. **Sarah Wruble** (Freshman, Coral Springs, FL) is one of our trio of graduates from American Heritage High School Sarah is a combination of size, speed, and power. Adept at any position, Sarah is a hard-nosed athlete dedicated to winning. **Cortney Reid** (Freshman, Deerfield Beach, FL) joins the Knights this year as well. Prep standout, captain, and M.V.P. at Cardinal Gibbons High School, Courtney is an experienced and savvy midfielder. **Tatiana Fabricio** (Freshman, Weston, FL) joins us from Western High School. Playing primarily as a forward in high school, Tatiana will change positions, enabling us to use her attributes of speed and tenacity at midfield. Finally, our last addition in the back is **Kerry Smith**. A native of Leeds, England, Keri is a talented offensive player. In addition to her skills, her international experience will be a great asset to the Knights.



## Forwards

We return both starting forwards from last year. **Katya Delgado** (Sophomore, West Palm Beach, FL) was named to the All-Conference and All-Region teams following her freshman year. Quick and crafty, Katya proved to be a valuable addition to the Knights and is expected to flourish in the upcoming years. **Rebecca Harrison** (Junior, Coral Springs, FL) returns this year as well. After her record setting freshman season (second leading scorer in Knights history), Rebecca has completely recovered from Achilles surgery in both feet following her freshman season. Rebecca is intent on rebounding after an up and down sophomore campaign. Joining the Knights is junior college transfer **Nicole LePage**. LePage (Junior, Cohees, NY) was her team's leading scorer and an All-Conference player last season. Graduating from Hudson Valley Community College as the school's all-time leader in points, Nicole is a welcome addition to the Knights. **Kim Browne** (Freshman, Downingtown, PA) is an exceptional athlete who can play any field position. Skillful and quick, Kim comes from a great soccer area and can be expected to excel as a Knight. **Shayla Ruddock** (Freshman, Plantation, FL). Shayla is the third American Heritage player to join the Knights this season. With blazing speed and physical strength, Shayla excels as a target player. Her athleticism and desire make her a powerhouse of a player and a welcome addition to our program.

As you can see, the Knights have added quite a few new faces in 2002. Combined with our returning players, I am extremely excited about the upcoming season and the seasons after. As we confront the challenges ahead, I feel confident in saying the best years of this young, but successful, program are in front of us.





## Returning Players



### KATYA DELGADO

5'4", Sophomore, Forward  
West Palm Beach, FL/ John I. Leonard, 2001

**2001:** Started in every game as a freshman...Named to the All-Conference Team and the NAIA First Team All-Region... Led team in assists for the season and was the second leading scorer during the season.

**CAREER:** Selected to All-Area, All-County, and All-Conference teams during junior and senior seasons at Leonard High...Holds Leonard High School record for most goals in one season with 30 as a junior...Received "Team"

Award that year...Participated in FSCA All-Star Game and was voted Palm Beach Girls MVP as a senior...Received Coach's Award...Featured as local News 12 "Athlete of the Week" as a junior...Played for Palm Beach United for four years... Also a member of the girls flag football team for two years being selected to the All-Conference team as a senior.

**PERSONAL:** Born November 28, 1983, in Lima, Peru...Undecided major...Enjoys watching movies, listening to music, and playing soccer...Favorite TV shows are *Friends* and *Will and Grace*...Daughter of Manuel and Lidia Delgado...Has two brothers, Daniel (5) and Javier (5) and one sister, Mariela (21).

YEAR	GP/GS	SHOTS	GOALS	ASSISTS	POINTS	GW
2001	18-18	28	4	3	11	1
<b>TOTALS</b>	<b>18-18</b>	<b>28</b>	<b>4</b>	<b>3</b>	<b>11</b>	<b>1</b>



### KELLY HARDING

5'5", Junior, Midfielder  
Winter Garden, FL/West Orange High, 2000

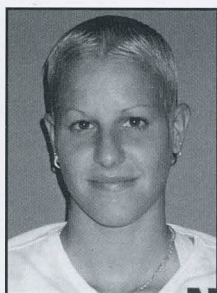
**2001:** Made 13 appearances for the Knights as a sophomore.

**2000:** Scored her first goal for the Knights against Webber College...Voted team's most improved player.

**CAREER:** Named Most Improved Player senior season... Scored 6 goals and added 9 assists...Led team to state tournament berth junior year...Under 18 squad won the 1998 Lakeland Memorial Day Tournament.

**PERSONAL:** Born November 3, 1981, in Orlando, FL...Sports and Wellness major...Biology minor...Enjoys riding horses and going to the beach... Daughter of Art and Denise Harding...Has two sisters, Lori (20) and Jennifer (18).

YEAR	GP/GS	SHOTS	GOALS	ASSISTS	POINTS	GW
2000	11-0	1	1	0	2	0
2001	13-0	1	0	0	0	0
<b>TOTALS</b>	<b>24-0</b>	<b>2</b>	<b>1</b>	<b>0</b>	<b>2</b>	<b>0</b>



**REBECCA HARRISON**

5'5", Junior, Forward  
Coral Springs, FL/ Douglas High, 2000

**2001:** Led team in goals, points, shots, and shots on goal; was second on team in assists...Played in all but one game as a sophomore.

**2000:** Saw action in 19 games...Had an unbelievable freshman year breaking NSU's record for goals in a game (4), goals in a season (14), points in a season (34), and points in a game (10)...Tied the record for consecutive matches with a goal (4)...Recorded 8 game-winning goals...All-Conference, All-

Region, and Honorable Mention All-American selection...Named FSC player of the week during season.

**CAREER:** First Team All-County junior and senior seasons...Player of the Year as voted by HighSchoolSports.com...MVP of Douglas High as a junior and senior... Scored 58 goals her final two seasons...Participated in High School State Tournament three times.

**PERSONAL:** Born June 18, 1982, in Israel...Business major...Favorite TV show is *Friends*...Hobby is soccer...Daughter of William and Deborah Harrison...Has one brother, Kevin (21).

YEAR	GP/GS	SHOTS	GOALS	ASSISTS	POINTS	GW
2000	19-16	58	14	6	34	8
2001	17-16	47	5	2	12	0
<b>TOTALS</b>	<b>36-32</b>	<b>105</b>	<b>19</b>	<b>8</b>	<b>46</b>	<b>8</b>



**KRYSTAL LAMB**

5'6", Junior, Midfielder  
West Palm Beach, FL/ John I. Leonard, 2000

**2001:** As a goalkeeper, made four appearances in her first year playing for the Knights...Shared one shutout against Webber International University.

**CAREER:** All-around athlete at John I. Leonard High ...Played soccer as a junior and senior...Selected honorable mention All-Conference and All-Area as a senior...First team All-Conference in softball and volleyball as well as second team All-Area in volleyball...Also the starting third baseman for

NSU's nationally ranked softball team.

**PERSONAL:** Born March 12, 1982, in New London, CT....Sports and Wellness Management major...Aspires to be an athletics director or team manager...Enjoys all sports...Daughter of John and Carla Lamb...has two sisters, Amber (17), Brittney (15) and one brother, Ryan (13).

YEAR	GP/GS	MIN	SAVES	GA	GAA	SHO
2001	4-0	41:54	2	1	2.15	0
<b>TOTALS</b>	<b>4-0</b>	<b>41:54</b>	<b>2</b>	<b>1</b>	<b>2.15</b>	<b>0</b>



### RENEE MASSIE

5'5", Sophomore, Defender  
Seminole, FL/Seminole High, 2001

**2001:** Played in 16 games for the Knights, starting 10... Named Most Improved Player of the Year.

**CAREER:** Participated in the Senior Soccer Challenge and voted Best Spirited...Played for Countryside Lightening club team for four years...Voted Rookie of the Year as Seminole freshman.

**PERSONAL:** Born July 16, 1983, in St. Petersburg, FL... Identified major...Lists Cobi Jones as her favorite athlete and USA Women's Soccer as her favorite team...Favorite TV show is *Dawson's Creek*...Favorite movie is *Romeo and Juliet*...Hobbies include going to the beach, wakeboarding, and exercising...Daughter of Dave and Cindy Massie...Has one sister, Jessica (20) and one brother, Grant (17).

YEAR	GP/GS	SHOTS	GOALS	ASSISTS	POINTS	GW
2001	16-10	1	0	0	0	0
<b>TOTALS</b>	<b>16-10</b>	<b>1</b>	<b>0</b>	<b>0</b>	<b>0</b>	<b>0</b>



### JENNI McDONOUGH

5'5", Junior, Defender  
Ponce Inlet, FL/Spruce Creek High, 2000

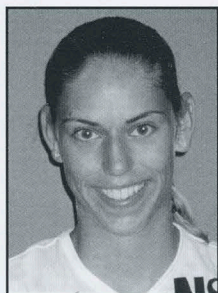
**2001:** Played in all 18 games during the season, starting in 11...Tallied her second collegiate assist in a game against St. Leo University.

**2000:** Saw time in 16 games as a freshman, starting in two...Recorded two goals and 12 shots on goal.

**CAREER:** All-Area 1997-1999...Voted best offensive player for SCH 1997, 1999, MVP 1998...Holds school record for goals scored...Kicked 35 PATs as a member of the varsity football team...Voted outstanding special teams player of the year...Holds school record for 4x400 relay.

**PERSONAL:** Born October 21, 1982, in Bethpage, NY...Physical Therapy major...Her favorite movies include any that star Brad Pitt...Enjoys pottery and going to the beach...Daughter of Thomas and Carol McDonough...Has one brother, T.J. (21).

YEAR	GP/GS	SHOTS	GOALS	ASSISTS	POINTS	GW
2000	16-2	22	2	1	5	0
2001	18-11	6	0	1	1	0
<b>TOTALS</b>	<b>34-13</b>	<b>28</b>	<b>2</b>	<b>2</b>	<b>6</b>	<b>0</b>

**KARRIE RIPPLE**

5'10", Junior, Defender

Coral Springs, FL/Cardinal Gibbons High, 2000

**2001:** Appeared in all season games except one, starting in 5...Scored her first collegiate goal in a 4-1 win over Belmont Abbey College.

**2000:** Backup goalkeeper for Knights...Saw action in eight games starting in one...Shared one shutout against Warner Southern.

**CAREER:** Played for Douglas High through junior season and Cardinal Gibbons High senior year...Honorable mention All-County as a junior...Participated in State Final Four...Played for club teams Renegade and Storm of Coral Springs...Participated in State Cup with traveling club team.

**PERSONAL:** Born September 24, 1981, Syracuse, NY...Physical Therapy major...Names Michelle Akers as her favorite athlete because of her inspiring determination...Favorite TV show is *Friends*...Favorite movie is *Dirty Dancing*...Enjoys water skiing, running, and spending time with family and friends... Daughter of Bill and Darlene Ripple...Has four sisters, Kristen (31), Nichol (30), Dana (23) and Shelly (22) and one brother, Brent (15).

YEAR	GP/GS	MIN	SAVES	GA	GAA	SHO
2000	8-1	288:33	13	5	1.56	0.5
2001	17-5	619:42	42	19	2.76	0
<b>TOTALS</b>	<b>25-6</b>	<b>908:15</b>	<b>55</b>	<b>24</b>	<b>2.16</b>	<b>.025</b>

**KATHERINE WINTLE**

5'7", Sophomore, Goalkeeper

Coral Springs, FL/Taravella High, 2001

**2001:** Played in 14 games as a freshman, starting in 10... Shared one shutout against Webber International University.

**CAREER:** Served as team captain as prep senior...Voted Most Valuable Defensive Player...All-County Honorable Mention all four years...1997-98 Rookie of the Year...MVP as prep junior...Named Who's Who in High School Sports All-Stars...Played in County senior All-Star game...BCAA Scholar Athlete...Ranked in top ten percent of graduating

class with a 4.6 GPA.

**PERSONAL:** Born April 30, 1983, in Lafayette, LA...Biology major...Lists Mia Hamm as her favorite athlete and inspiration towards greatness...Favorite TV show is *Friends*...Hobbies include watching movies, listening to music, soccer, and hanging out with friends...Daughter of David and Pamela Wintle...Has two brothers, Andy (24) and Josh (22).

YEAR	GP/GS	MIN	SAVES	GA	GAA	SHO
2001	14-10	992:57	80	28	2.54	0
<b>TOTALS</b>	<b>14-10</b>	<b>992:57</b>	<b>80</b>	<b>28</b>	<b>2.54</b>	<b>0</b>



## Women's Soccer Newcomers

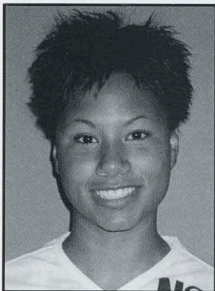


### **DAWN BANFORD**

5'6", Sophomore, Midfielder  
Glasgow, Scotland/Claremont High, 1991/St. Thomas University, 2001

**CAREER:** Played for the Scottish National Team...Captain of St. Thomas team.

**PERSONAL:** Born August 14, 1975, in Glasgow, Scotland... Education major...Aspires to coach at the university level... Hobby is soccer...Favorite teams are the Rangers F.C. and the Scottish National Team...Daughter of Hugh Banford... Has one brother, Geoff (28) and one sister, Lorraine (30).



### **KIMBERLY BROWNE**

5'7", Freshman, Defender  
Downington, PA/Downington Senior High, 2002

**CAREER:** Helped team to Ches-Mont League Champion title and to PIAA State quarterfinals in 1999 season...Helped team to Ches-Mont League Champion title, PIAA District One Champion title, and to PIAA State quarterfinals in 1998 season.

**PERSONAL:** Born May 26, 1984, in Downington, PA... Psychology major...Favorite athlete is Richard Burns... Favorite team is the New England Patriots...Enjoys hiking, biking, stargazing, and listening to music...Daughter of John and Marianne Drossos.

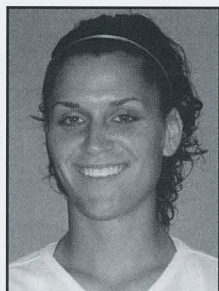


### **TATIANA FABRICIO**

5'5", Freshman, Midfielder  
Weston, FL/Western High, 2002

**CAREER:** Helped team to state semi-finals 2001...Varsity starter all four years...Tallied 11 goals and 8 assists senior year.

**PERSONAL:** Born February 25, 1984, in Weston, FL...Biology major...Aspires to open her own clinic...Favorite athlete is Dunga...Favorite team is Flamengo...Enjoys playing all sports...Daughter of Marcus and Patricia Fabricio...Has one sister, Cristiana (20).



**NICOLE LePAGE**

5'7", Junior, Midfielder  
Cohoes, NY/Cohoes High, 2000/Hudson Valley  
Community College, 2002

**CAREER:** Named Most Valuable Forward in 2001...Named to First Team Mount Valley Conference 2000 and 2001...Named MVP at Hudson Valley Community College in 2000...Leading scorer in 2000...Named to Second Team All-Region in 2000... At Cohoes High, named MVP, Most Athletic and Captain... Awarded the Army Athletic-Scholar Medal...Named to the Second Team All-Area as a junior.

**PERSONAL:** Born March 8, 1982, in Cohoes, NY...Biology major...Aspires to be a Pharmaceutical Researcher for cancer...Favorite athlete is Mia Hamm...Favorite team is the NY Yankees...Enjoys rollerblading, soccer, basketball, swimming, and hanging out with friends...Daughter of Tony and Sandy LePage...Has one sister, Laura (23) and one brother, Anthony (18).

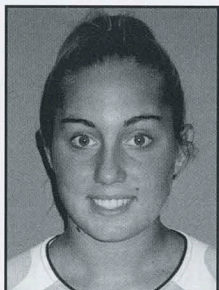


**KELLY O'BRIEN**

5'4", Freshman, Midfielder  
Daytona Beach, FL/Seabreeze High, 2002

**CAREER:** Named to First Team All-Conference senior year and midfield MVP senior year...Named Gatorade Player of the Year in 2001...Received Coach's Award 2001...Named to Second Team All-County and All-Area as prep junior...Helped team to four district championship titles...Helped team to state semi-finals two years...Captained her club team.

**PERSONAL:** Born December 3, 1983, in Ormond Beach, FL... Undecided major...Favorite athlete is Mia Hamm...Favorite team is Florida Gators...Enjoys working out...Daughter of Pat and Gina O'Brien...Has two brothers, Patrick (17) and Chris (12), and one sister Karley (10).



**RACHEL PROVENZANO**

5'6", Freshman, Goalkeeper  
Daytona Beach, FL/Seabreeze High, 2002

**CAREER:** Named to the Orlando Sentinel All-County First Team as junior and senior...Named to the Daytona New Journal All-Area First Team junior and senior years...Named Michelle Akers MVP Defense player and Varsity MVP senior year...Member of the FACA All-Star Classic—North Team... Had 0.78 goals against average senior year.

**PERSONAL:** Born August 6, 1984, in Ormond Beach, FL... Education major...Favorite athlete is Michael Jordan... Favorite team is the U.S. Women's National Soccer

Team...Enjoys camping...Daughter of Bob and Nancy Provenzano...Has two brothers, Paul and Danny.



### **CORTNEY REID**

5'4", Freshman, Midfielder

Deerfield Beach, FL/Cardinal Gibbons High, 2002

**CAREER:** Voted Offensive MVP junior and senior year...Named to Third Team All-District junior and senior year...Named to Honorable Mention All-District Team freshman and sophomore year...Named Most Improved Player freshman year.

**PERSONAL:** Born June 13, 1984, in Deerfield Beach, FL... Business major...Favorite athlete is Paaval Bure...Favorite team is the Miami Dolphins...Enjoys surfing, fishing, boating, skim boarding, and diving...Daughter of Donald and Megan Reid...Has one sister, Emily (16).



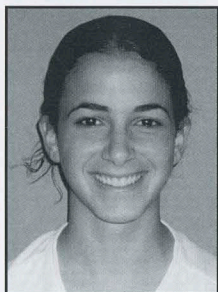
### **SHAYLA RUDDOCK**

5'8", Freshman, Forward

Plantation, FL/American Heritage, 2002

**CAREER:** Helped American Heritage to state champion titles for the last two years and a national ranking of second...Named MVP Forward...Named to the Honorable Mention All-Country Team as a senior...Had one of the top scoring averages on the team.

**PERSONAL:** Born February 25, 1984, in Plantation, FL...Biology major...Favorite athlete is Florence Griffith Joyner... Daughter of Pat Romney...Has two brothers, Sean (21) and Chris (17).



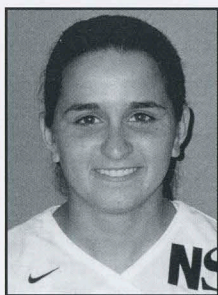
### **LAURA SABBAGH**

5'6", Freshman, Defender

Miami Lakes, FL/American Heritage, 2002

**CAREER:** Helped American Heritage to state champion titles for the last two years and a national ranking of second...

**PERSONAL:** Born March 18, 1984, in Miami, FL...Undecided major...Daughter of Najib and Carmen Sabbagh...Has one brother, Chris.



### **ALEXIS SASSO**

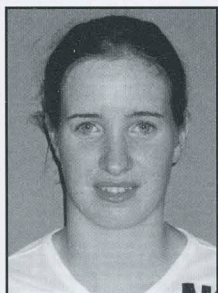
5'0", Freshman, Defender

Coral Springs, FL/Douglas High, 2002

**CAREER:** Named to Honorable Mention Team, FACA Team, and Broward County All-Star squad...Helped team to district titles freshman through senior year...Helped team to state finals junior and senior year.

**PERSONAL:** Born March 29, 1984, in Coral Springs, FL... Education major...Favorite athlete is Brandy Chastain...Favorite team is the Columbus Crew...Enjoys playing sports and hanging

out with friends...Daughter of Joe and Ann Sasso...Has one brother, Michael (22).



**KERRY SMITH**

5'8", Freshman, Midfielder  
Leeds, UK/Lawnswood School

**CAREER:** Played club soccer for Doncaster Belles, Leeds City Vixen, and junior soccer for Leeds United Ladies.

**PERSONAL:** Born May 18, 1977 in Leeds, England... Psychology major...Enjoys playing soccer, listening to music and reading...Aspires to play pro soccer and educate children... Favorite athlete is Ronaldo...Favorite team is FC Barcelona... Daughter of Patrick Smith...Has one brother, Alex (21).

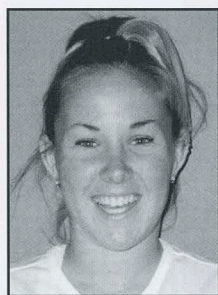


**MEGHAN TOWNE**

5'9", Freshman, Defender  
Royal Palm Beach, FL/Suncoast High,

**CAREER:** Named First Team All-Conference freshman through senior year...Named First Team All-Area senior year...Helped team to third place in state tournament...Voted Most Valuable for southern region of state...Had 22 goals senior year while playing stopper position.

**PERSONAL:** Born February 22, 1984, in Royal Palm Beach, FL...Education major...Aspires to be a First grade teacher and then a professor...Enjoys going to the beach, hanging out with friends, and going to the movies...Daughter of Don and Judy Towne...Has three sisters, Mary Kate (16), Sammy (13), and Casey (10).



**SARAH WRUBLE**

5'5", Freshman, Midfielder  
Coral Springs, FL/American Heritage, 2002

**CAREER:** Named Second Team All-Broward... Helped American Heritage to state champion titles in 2001 and 2002.

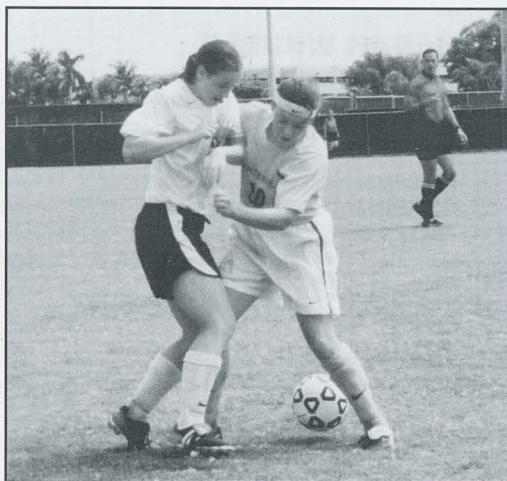
**PERSONAL:** Born August 15, 1983, in Coral Springs, FL... Undecided major...Aspires to own her own business... Favorite athlete is Alan Iverson...Favorite team is the Philadelphia 76ers...Daughter of Harold and Karen Wruble... Has two sisters, Jennifer and Laura.





## 2001 NSU Knights Women's Soccer Statistics

#	NAME	GP-GS	G	A	PTS	SH	SOG	GW	PK
1	Katherine Wintle	14-9	0	0	0	0	0	0	0
2	Dana Deis	18-15	1	0	2	7	6	1	0
3	Alana Berg	1-0	0	0	0	0	0	0	0
4	Kim Starman	18-16	0	0	0	0	0	0	0
5	Jaimie Krause	18-18	1	2	4	18	10	0	0
6	Melissa Lehmann	14-3	0	0	0	0	0	0	0
7	Karrie Ripple	17-3	1	0	2	2	1	0	0
8	Suzanne Mastrogiovanni	17-5	0	1	1	9	2	0	0
9	Krystal Lamb	4-0	0	0	0	0	0	0	0
11	Kelly Harding	13-0	0	0	0	1	0	0	0
13	Erin Redfield	9-7	0	0	0	4	3	0	0
14	Rebecca Harrison	17-16	5	2	12	47	26	0	0
15	Rachel Roman	13-3	2	1	5	15	7	1	0
16	Katya Delgado	18-18	4	3	11	28	20	0	0
18	Renee Massie	16-10	0	0	0	1	1	0	0
19	Stacey Brown	1-0	0	0	0	0	0	0	0
20	Danielle DeGregorio	18-18	1	0	2	10	4	0	0
21	Lauren McKee	13-11	1	2	4	19	13	0	0
22	Ally Salzano	17-13	0	0	0	14	4	0	0
23	Jenni McDonough	18-11	0	1	1	6	3	0	0
24	Melanie Marten	1-0	0	0	0	0	0	0	0
25	Margo Miller	18-16	1	0	2	3	2	0	1
<b>TOTAL</b>		<b>18</b>	<b>18</b>	<b>12</b>	<b>48</b>	<b>184</b>	<b>103</b>	<b>2</b>	<b>1</b>
<b>OPPONENTS</b>		<b>18</b>	<b>48</b>	<b>39</b>	<b>135</b>	<b>285</b>	<b>172</b>	<b>15</b>	<b>1</b>





## 2001 NSU Knights Women's Soccer Record Book

### All-Time Record vs. Opponents

Anderson University	0-1-0
Barry University	0-8-0
Bellevue University	0-2-0
Belmont Abbey College	1-0-0
Berry College	0-1-0
Brewton-Parker	0-2-0
Eckerd College	1-1-0
Embry-Riddle University	5-4-0
Flagler College	12-2-0
Florida Atlantic University	0-4-0
Florida International University	0-2-0
Florida Southern College	2-0-0
Georgia Southern College	0-1-0
Howard University	1-0-0
Huntington College	1-0-0
Iowa State	0-1-0
Lynn University	0-7-0
Madonna University	0-1-0
Miami, University of	0-1-0
North Florida, University of	1-2-0
Northwood University	6-0-1
Palm Beach Atlantic College	12-6-0
Pfeiffer University	0-1-0
Piedmont College	1-1-0
Rollins College	1-1-0
Saint Leo University	1-1-0
Saint Thomas University	4-12-2
South Florida, University of	2-1-0
Stetson University	0-1-0
Tampa, University of	0-1-0
Warner Southern College	2-1-0
Webber College	12-1-0
<b>TOTAL:</b>	<b>65-67-3</b>

### All-Time Roster

Abbott, Marissa	1997-00
Adams, Mandi	1997-99
Alexandrou, Gina	1996-97
Berg, Alana	2000-01
Bernal, Olivia	1995-98
Bidot, Susie	1995
Brown, Stacy-Ann	1995-97
Calkins, Lauren	1998-99

Carone, Christy	1995-96
Conforti, Elisabeth	1997-98
Cooper, Renonne	1995-96
Crain, Cathy	1995-96
Deis, Dana	1998-01
DeGregorio, Danielle	1998-01
Delgado, Katya	2001-
DeMarzo, Jennifer	1995
Fernandez, Aimee	1995-98
Goody, Jessica	1996-99
Harding, Kelly	2000-
Harness, Krista	1997-00
Harrison, Rebecca	2000-
Imperato, Elizabeth	1996
Ioannou, Helena	1997-00
Jenkins, Jennifer	1997-99
Krause, Jamie	1998-01
Lamb, Krystal	2001-
Lehman, Melissa	2000-01
Massie, Renee	2001-
Mastrogiovanni, Suzanne	1998-01
McDonough, Jenni	2000-
McKee, Lauren	2001
Militano, Vanessa	2000
Miller, Margo	2000-01
More, April	1995
Narvaez, Jessica	1998-99
Ojeda, Cindy	1995-98
Perez, Ingrid	1995-96
Perez, Teresa	1999
Peters, Catherine	1995
Redfield, Erin	2001
Riordian, Krysten	1995-96
Ripple, Kerri	2000-
Rogers, Heather	1997-98
Roman, Rachel	2001
Saltys, Jennifer	1999-00
Salzano, Ally	2001
Saporito, Leah	1999
Simmons, Melissa	1997-00
Starman, Kimberly	1998-01
Stone, Amy	1995-96
Templin, Carrie	1995-96
Venditti, Katie	2000



## 2002 Women's Soccer Media Guide

Wiggins, Jennifer	1997-00
Wintle, Katherine	2001-
Wong, Silvia	1995-96
Young, Bev	1995-96
Zapata, Nury	1996-97

### Year by Year Results

YEAR	W-L-T	COACH
1995	8-10-1	Akram Molaka
1996	9-8-0	Rebecca Utter
1997	9-10-1	Rebecca Utter
1998	12-10-0	Rebecca Utter
1999	10-9-0	Mike Goodrich
2000	16-6-0	Mike Goodrich
2001	2-15-1	Mike Goodrich

### Coach Records

YEARS	COACH	RECORD	PCT.
1995	Molaka	8-10-1	.447
1996-98	Utter	30-28-1	.517
1999-	Goodrich	28-30-1	.483

### Top-Ten Career/Goals

1. Mandi Adams	31	1997-99
2. Jennifer Jenkins	20	1997-99
3. Rebecca Harrison	19	2000-
4. Bev Young	15	1995-96
5. Reonne Cooper	14	1995-96
5. Jessica Goody	14	1996-99
7. Melissa Simmons	13	1997-00
8. Alana Berg	10	2000-01
9. Amy Stone	8	1995-96
9. Krista Harness	8	1997-00

### Top-10 Career/ Assists

1. Mandi Adams	15	1997-99
2. Melissa Simmons	14	1997-00
3. Amy Stone	13	1995-96
4. Jamie Krause	11	1998-01
5. Dana Deis	9	1998-01
5. Jessica Narvaez	9	1998-99
7. Suzanne Mastrogiovanni	8	1998-01
7. Rebecca Harrison	8	2000-
8. Jennifer Jenkins	7	1997-99
8. Jessica Goody	7	1996-99

### Top-10 Career Points

1. Mandi Adams	77	1997-00
2. Jennifer Jenkins	47	1997-99
3. Rebecca Harrison	46	2000-
4. Melissa Simmons	40	1997-00
5. Bev Young	35	1995-96
6. Jamie Krause	33	1998-01
7. Reonne Cooper	32	1995-96
8. Amy Stone	29	1995-96
8. Jessica Goody	29	1996-99
10. Alana Berg	26	2000-01

### Post Season Successes

Florida Sun Conference Champions  
 FSC Regular Season Champions  
 Florida Sun Conference Champions  
 Florida Sun Conference Champions  
 2000 Region XIV Runner-Up

### Individual Records

#### GOALS/GAME:

4, Rebecca Harrison vs. Webber College, 9/16/00

#### GOALS/SEASON:

14, Rebecca Harrison, 2000

#### CONSECUTIVE MATCHES

##### WITH A GOAL:

4, Rebecca Harrison, 2000; Mandi Adams, 1998; Bev Young, 1995

##### ASSISTS/GAME:

3, Amy Stone vs. Flagler College, 9/15/95; Amy Stone vs. Palm Beach Atlantic, 10/6/95

##### ASSISTS/SEASON:

7, Amy Stone, 1995; Dana Deis, 2000

#### CONSECUTIVE MATCHES

##### WITH AN ASSIST:

2, Rebecca Harrison, 2000; Jamie Krause, 1999; Suzanne Mastrogiovanni, 1998; Missy Moore, 1998; Jessica Narvaez, 1998; Jennifer Jenkins, 1997, 1998; Olivia Bernal, 1997; Stacy-Ann Brown, 1996

##### POINTS/GAME:

10, Rebecca Harrison vs. Webber College 9/16/00



## POINTS/SEASON:

34, Rebecca Harrison, 2000

## SHOTS/GAME:

11, Jennifer Jenkins vs. Palm Beach Atlantic College, 10/31/98;  
Reonne Cooper vs. Webber College, 9/4/96

## SHOTS/SEASON:

64, Mandi Adams, 2000

## GAMES PLAYED/ SEASON:

22, Jamie Krause, 2000; Dana Deis, 2000; Krista Harness, 2000; Margo Miller, 2000; Kim Starman, 2000; Mandi Adams, 1998, 2000; Jessica Narvaez, 1998; Suzanne Mastrogiovanni, 1998; Missy Moore, 1998; Melissa Simmons, 1998; Danielle Degregorio, 1998; Marissa Abbott, 1998, 2000; Cindy Ojeda, 1998

## GAMES PLAYED/CAREER:

82, Marissa Abbott, 1997-00,  
Mandi Adams, 1997-00

## MOST CAREER STARTS:

82, Marissa Abbott, 1997-00

## LOWEST GOALS AGAINST

### AVERAGE/SEASON:

1.08, Jennifer Wiggins, 2000

## LOWEST GOALS AGAINST

### AVERAGE TEAM/ SEASON:

1.08, Jennifer Wiggins, 2000

## SAVES/GAME:

21, April More vs. Lynn University, 9/17/95

## SAVES/SEASON:

123, Jennifer Wiggins, 1999

## SAVES CAREER:

372, Jennifer Wiggins, 1997-00

## SHUTOUTS/ SEASON:

7.5, Jennifer Wiggins, 1998, 2000

## SHUTOUTS/CAREER:

23, Jennifer Wiggins, 1997-00

## Team Records

### GOALS/GAME:

11, vs. Northwood University, 9/28/98

## GOALS COMBINED/GAME:

14, vs. Lynn University, 11/10/95;  
vs. Barry University, 10/28/98

## ASSISTS/ GAME:

9, vs. Northwood University, 9/28/98

## SHOTS/GAME:

52, vs. Northwood University, 10/31/98

## SHOTS ALLOWED/GAME:

37, vs. Florida International University, 9/2/96

## SHOTS ALLOWED/SEASON:

285, 2001

## SAVES/GAME:

21, vs. Lynn University, 11/10/95

## LARGEST WINNING MARGIN:

11, vs. Northwood University, 9/28/98

## WINS/SEASON:

16, 2000

## CONSECUTIVE WINS:

7, 2000

## HOME WINS/SEASON:

8, 2000

## CONSECUTIVE HOME WINS:

4, 1999, 2000

## ROAD WINS/SEASON:

7, 1998, 2000

## CONSECUTIVE ROAD WINS:

3, 2000

## CONSECUTIVE MATCHES

### WITHOUT A LOSS:

7, 2000

## FEWEST LOSSES:

6, 2000

## SHOTS/SEASON:

419, 1998

## GOALS/SEASON:

61, 2000

## CONSECUTIVE MATCHES W/GOAL:

10, 1998

## CONSECUTIVE HOME

### MATCHES W/GOAL:

5, 1998, 1999

## 5 OR MORE GOALS:

3, 2000



**4 OR MORE GOALS:**

6, 1998, 2000

**3 OR MORE GOALS:**

11, 2000

**FEWEST GOALS**

**SCORED/SEASON:**

25, 1999

**LOWEST GOALS SCORED**

**PER MATCH/ SEASON:**

1.32, 1999

**FEWEST GOALS**

**ALLOWED/ SEASON:**

26, 2000

**MOST GOALS ALLOWED/SEASON:**

56, 1995

**HIGHEST GOALS AGAINST**

**AVERAGE/ SEASON:**

3.00, 1995

**POINTS/SEASON:**

165, 2000

**FEWEST POINTS/SEASON:**

48, 2001

**SHUTOUTS/SEASON:**

9, 1998





*Coca-Cola*®

**Official soft drink  
of the NSU Knights**



# 2002 NSU Fall Sports Schedules

## Men's Soccer Schedule

Date	Opponent	Time
8/30	Carson-Newman (at Lynn Classic)	4:30 p.m.
9/1	West Florida (at Lynn Classic)	12:30 p.m.
<b>9/4</b>	<b>Webber International University</b>	<b>7:00 p.m.</b>
9/7	Embry-Riddle University	7:30 p.m.
<b>9/13</b>	<b>Catawba (NSU Hilton Invit'l)</b>	<b>7:00 p.m.</b>
<b>9/15</b>	<b>St. Thomas University (NSU Hilton Invit'l)</b>	<b>3:00 p.m.</b>
9/18	Barry University	5:00 p.m.
<b>9/28</b>	<b>St. Leo University (Alumni Night)</b>	<b>7:00 p.m.</b>
<b>9/30</b>	<b>Northwood University</b>	<b>7:00 p.m.</b>
10/4	Thomas University (GA)	4:00 p.m.
10/6	Lincoln Memorial College (TN)	1:00 p.m.
<b>10/12</b>	<b>Eckerd College</b>	<b>7:00 p.m.</b>
<b>10/19</b>	<b>Rollins College</b>	<b>7:00 p.m.</b>
10/22	Florida Southern College	7:00 p.m.
10/25	Alabama—Huntsville (AL)	2:30 p.m.
10/27	Montevallo (AL)	1:00 p.m.
<b>10/30</b>	<b>Lynn University</b>	<b>7:00 p.m.</b>
11/2	Florida Institute of Technology	7:00 p.m.
<b>11/6</b>	<b>Palm Beach Atlantic College</b>	<b>6:00 p.m.</b>
<b>11/9</b>	<b>Flagler College</b>	<b>7:00 p.m.</b>
11/16	NCAA National Tournament	TBA

### Home games in bold

Head Coach: **Joe DePalo**

Assistant Coaches: **Dan McNally, Leo Vega**

Captains: **Carlos Cadena, Jeremy Flint**



## Volleyball Schedule

Date	Opponent	Time
8/30	Emporia State (Missouri Western Tournament)	4:00 p.m.
8/30	Pittsburgh State (Missouri Western Tournament)	6:00 p.m.
8/31	Mississippi University for Women (MW Tourn.)	Noon
8/31	Missouri Western (Missouri Western Tournament)	4:00 p.m.
9/6	Abilene Christian (Rollins Invitational)	7:00 p.m.
9/7	Slippery Rock (Rollins Invitational)	11:00 a.m.
9/7	Florida Institute of Technology	5:00 p.m.
9/13	Converse College (Carson-Newman Tournament)	Noon
9/13	Carson-Newman College (Carson-Newman Tourn.)	7:30 p.m.
9/14	Mars Hill College (Carson-Newman Tournament)	10:00 a.m.
9/14	UNC-Pembroke (Carson-Newman Tournament)	3:00 p.m.
<b>9/20</b>	<b>Lynn University</b>	<b>7:00 p.m.</b>
9/24	Barry University	7:00 p.m.
<b>10/1</b>	<b>St. Thomas University (BCC)</b>	<b>7:00 p.m.</b>
<b>10/4</b>	<b>Webber International University (UNS)</b>	<b>7:30 p.m.</b>
<b>10/5</b>	<b>Embry-Riddle University (UNS)</b>	<b>5:00 p.m.</b>
10/11	Florida Southern College (Moccasin Invitational)	3:00 p.m.
10/11	St. Leo University (Moccasin Invitational)	7:00 p.m.
10/12	Armstrong Atlantic (Moccasin Invitational)	11:00 a.m.
10/12	University of Tampa (Moccasin Invitational)	4:00 p.m.
<b>10/17</b>	<b>Northwood University (BCC)</b>	<b>7:00 p.m.</b>
<b>10/18</b>	<b>Palm Beach Atlantic College (BCC)</b>	<b>7:00 p.m.</b>
10/22	Lynn University	7:00 p.m.
<b>10/29</b>	<b>Florida Memorial College (BCC)</b>	<b>7:00 p.m.</b>
<b>11/3</b>	<b>St. Leo University (BCC)</b>	<b>2:30 p.m.</b>
11/7	Palm Beach Atlantic College	7:00 p.m.
11/8	Florida Memorial College	7:00 p.m.
<b>11/16</b>	<b>Rollins College (BCC)</b>	<b>6:00 p.m.</b>

### Home games in bold

- BCC—Home games to be played at George Mayer Gymnasium on the BCC Central Campus, Bldg. #10
- UNS—Home games to be played at the University School Gymnasium

Head Coach: **Lori Rembe**

Assistant Coach: **Lisa Rembe**





### Women's Cross Country Schedule

Date	Event	Time
9/14	Florida Tech Invitational @ Florida Tech	7:30 a.m.
9/20	flrunners.com Invitational @ Winter Park	5:20 p.m.
9/28	Eckerd College Invitational @ Eckerd College	7:30 a.m.
10/5	UF Invitational @ UF	7:30 a.m.
10/12	Walt Disney World Classic in Orlando	7:30 a.m.
10/18	Stetson Hatter Invitational @ Stetson University	5:00 p.m.

### Men's Golf Fall Tournaments

9/22–9/24	Johnson & Wales, College Preview, Doral White
9/29–10/1	Spartan Invitational, University of Tampa
10/25–10/27	Pfeiffer North Shore Intercollegiate
11/3–11/5	Rollins College Invitational

### Women's Golf Fall Tournaments

9/8–9/10	Anderson College Invitational, Aiken, SC
9/27–9/29	Lady Falcon, Daytona Beach Community College
10/13–10/15	Lenoir Rhyne Myrtle Beach Women's Intercollegiate
10/19–10/21	Queens College, Charlotte, NC





## Big Blue Club

Contributions from Big Blue Club Donors support the scholarship commitment of the NSU Department of Athletics. Donors' tax-deductible contributions assist the Athletics Department in providing student-athletes with fulfillment on the playing field, in the classroom, and ultimately throughout life. We thank present and future Big Blue Club members for their continued support.

### Big Blue Club Donor

### Company

Michael Ambach	Individual Donor
Barry Bader	Individual Donor
Steve Bias	Nova Southeastern University
Douglas Buck	Nova Southeastern University
Jerome Colvin	Individual Donor
Community Bank of Florida	Community Bank of Florida
Dennis Dannacher	Individual Donor
Lisa Davis	Nova Southeastern University
Timothy Dixon	Nova Southeastern University
Suellen Fardelman	Nova Southeastern University
Mark Feinstein	General Mortgage Associates, Inc.
Stephen Fischer	Individual Donor
Abraham Fischler	Nova Southeastern University
Barry Freeman	Nova Southeastern University
Edward Gersh	West Hills Day Camp, Inc.
Murray Glickman	Individual Donor
Joseph Harbaugh	NSU Shepard Broad Law Center
Jerry Homer	Individual Donor
June Kletzel	Nova Southeastern University
Joe Kovac	Kovac Automotive
Dawn Krehmeyer	Miami Lakes Elementary
Andy Leeds	Individual Donor
Marilyn Lew-Jacobs	Individual Donor
Arthur Ludwig	Individual Donor
V. P. Luft	Individual Donor
Laurence Mages	Individual Donor
Jerome Marco	Individual Donor
Bernard Mayer	Individual Donor



### Big Blue Club Donor

David and Lee Millman  
Joel Munson  
Julius Needelman  
Deo Nellis  
Barry Newton  
Hunter Peak  
H. J. Pflieger  
Publix Supermarket  
Randi Rentzer  
Jimmy Ricci  
Seth Ripple  
Herman Romash  
Marilyn Rule-Heinrich  
John Salvatore  
Richard Sambol  
Leslie Schwartz  
Felicia Skinner  
Garth Smith  
Arthur Snyder  
South Florida Trane Company  
Norman Stein  
Steven Strumwasser  
Alan Swenson  
Robert Uttal  
Irving Volk  
Bev and Dan Welker  
Zita Wilensky  
Joel Marc Wilentz, M.D.

### Company

Individual Donor  
Nova Southeastern University  
Individual Donor  
Nova Southeastern University  
Individual Donor  
Nova Southeastern University  
Pflieger Financial Group  
Publix Supermarket  
Individual Donor  
JRM Properties and Investments  
Salomon Smith Barney  
Individual Donor  
Nova Southeastern University  
Soccer Extreme  
Individual Donor  
Individual Donor  
Individual Donor  
Nova Southeastern University  
Nova Southeastern University  
South Florida Trane Company  
Individual Donor  
Individual Donor  
Nova Southeastern University  
Individual Donor  
Individual Donor  
Nova Southeastern University  
Individual Donor  
Individual Donor

# NSU Knights Commercial Affiliates



THE  
AIR CONDITIONING  
PEOPLE



DECO Lighting Design



**MILLER & SOLOMON**  
GENERAL CONTRACTORS, INC.  
"BUILDING THE FUTURE"

MS. CABLE & WIRE INSTALLATIONS, INC.



VOICE & DATA - FIBER & COPPER  
552 N.E. 37th Street, Fort Lauderdale, Florida 33334  
(954) 565-6061 • Fax: (954) 561-1393

**UNICCO**

INTEGRATED FACILITIES SERVICES®

**Building  
Automation**  
AUTOMATION AND CONTROL SPECIALIST



DUTTON PRESS, INC.



Best Western  
**ROLLING HILLS**  
RESORT



Henry's Carpet and Tile, Inc.

**SIEMENS**

**W.H. MASSEY**

construction company  
NATIONWIDE COMMERCIAL & RETAIL CONSTRUCTION



**2002 NSU Knights Women's Soccer Team**