

2004

# Doctor of Health Science Overview

Nova Southeastern University

Follow this and additional works at: [https://nsuworks.nova.edu/hpd\\_coursecatalogs](https://nsuworks.nova.edu/hpd_coursecatalogs)

 Part of the [Medicine and Health Sciences Commons](#)

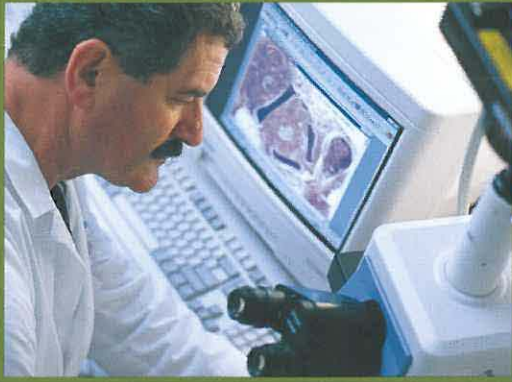
---

## NSUWorks Citation

Nova Southeastern University, "Doctor of Health Science Overview" (2004). *Health Professions Divisions Course Catalogs*. 28.  
[https://nsuworks.nova.edu/hpd\\_coursecatalogs/28](https://nsuworks.nova.edu/hpd_coursecatalogs/28)

This Program Overview is brought to you for free and open access by the NSU Course Catalogs and Course Descriptions at NSUWorks. It has been accepted for inclusion in Health Professions Divisions Course Catalogs by an authorized administrator of NSUWorks. For more information, please contact [nsuworks@nova.edu](mailto:nsuworks@nova.edu).

HEALTH PROFESSIONS DIVISION 2004



# doctor of health science

college of allied health  
and nursing



HEALTH  
PROFESSIONS  
DIVISION

TERRY BUILDING

# nova southeastern university

Nova Southeastern University, synonymous with dynamic innovation and intellectual challenge, is the largest independent not-for-profit university in the southeast, and with an enrollment of approximately 21,000, is the 12th largest in the United States. Situated on a beautiful 300-acre campus in Fort Lauderdale, Florida, the university is experiencing a sustained period of academic growth, fiscal strength, and commitment to the challenges of the 21st century.

In this environment of expansion and stability, the university is capitalizing on its strengths in such areas as academic innovation, comprehensive clinical training, and flexible educational delivery systems.

Founded in 1964 as Nova University, the institution merged with Southeastern University of the Health Sciences in 1994, creating Nova Southeastern University. To date, the institution has graduated more than 74,000 alumni. Fully accredited by the Commission on Colleges of the Southern Association of Colleges and Schools, the university awards associate's, bachelor's, master's, educational specialist, and doctoral degrees in a wide range of fields including the health professions, law, business, marine sciences, psychology, social sciences, computer and information sciences, and education.

The university's programs are administered through 15 academic centers that offer courses at the main campus and at field-based locations throughout Florida; across the nation; and at selected international sites in Europe, Canada, the Pacific Rim, Central and South America, and the Caribbean.

With a budget of more than \$220 million a year and an upward trend in enrollment, the university will continue to maintain a solid record of academic and fiscal strength and excellence in teaching and community service, while expanding its mission in research and scholarship.

## nsu mission statement

**Nova Southeastern University is a dynamic, not-for-profit independent institution dedicated to providing high-quality educational programs of distinction from preschool through the professional and doctoral levels, as well as service to the community. Nova Southeastern University prepares students for lifelong learning and leadership roles in business and the professions. It offers academic programs at times convenient to students, employing innovative delivery systems and rich learning resources on campus and at distant sites. The university fosters inquiry, research, and creative professional activity by uniting faculty and students in acquiring and applying knowledge in clinical, community, and professional settings.**

# health professions division

As a student in the Health Professions Division of Nova Southeastern University, you can anticipate a remarkable experience. You will train, study, interact, and share faculty and resources (either campus-based or online) with students from various backgrounds and disciplines. This interdisciplinary approach distinguishes the Health Professions Division as unique and will better prepare you to master your discipline with a sensitivity and understanding of the entire health care system.

The Health Professions Division, with a student body of more than 2,500, is home to six colleges. The College of Osteopathic Medicine, the first one in the southeastern United States, grants the doctor of osteopathic medicine (D.O.) degree. The College of Osteopathic Medicine also awards the master of public health degree (M.P.H.). The College of Pharmacy offers the doctor of pharmacy (Pharm.D.) degree to traditional, international, and postbaccalaureate students. The College of Optometry is the only institution in the state of Florida that awards the doctor of optometry (O.D.) degree as well as the master in clinical vision research (M.S.). The College of Allied Health and Nursing offers a bachelor of science in nursing, a dual-degree physician assistant program that awards the bachelor of science/master of medical science (B.S./M.M.S.) degrees, and a master of occupational therapy degree (M.O.T.), as well as the entry-level doctor of physical therapy (D.P.T.) degree. Doctoral programs are also offered in occupational therapy

(Ph.D./O.T., O.T.D.), physical therapy (Ph.D./P.T., D.P.T.), and audiology (Au.D.). In addition to these programs, the College of Allied Health and Nursing offers the master of medical science (M.M.S.), the bachelor of health science (B.H.Sc.), and doctor of health science (D.H.Sc.) degrees open to midlevel



clinicians and allied health professionals. The College of Medical Sciences grants the master of biomedical sciences (M.B.S.) degree. In the fall of 1997, the College of Dental Medicine admitted its charter class into the doctor of dental medicine (D.M.D.) program.

The Health Professions Division occupies a \$70 million complex, covering 21 acres of the university campus. The division includes eight buildings totaling more than 900,000 square feet of space for classrooms, laboratories, offices, the Health Professions Division Library, an outpatient health center, and a pharmaceutical care center. The adjacent 1,500-vehicle parking garage overlooks the Miami Dolphins Training Camp.

This brochure is for information purposes only and does not represent a contract. Information contained herein is subject to change at any time by administrative decision on the direction of the board of trustees.

## letter from the chancellor



If you wish to be a leader in the health professions, Nova Southeastern University can help you reach your potential.

The Health Professions Division is unique in that it has been developed as an interdisciplinary educational center from its inception. The division was founded on the concept that the interdisciplinary approach to education is beneficial to students of all professions, and by preparing students to work effectively with health care providers from different fields, barriers are broken and patient care is enhanced.

In less than two decades, NSU's Health Professions Division has developed into a multidisciplinary academic health center of international stature. Composed of the Colleges of Osteopathic Medicine, Pharmacy, Dental Medicine, Optometry, Allied Health and Nursing, and Medical Sciences, the Health Professions Division has redoubled its commitment to academic excellence, innovation, and community service, while expanding its mission in research and scholarship. Working together, our distinguished faculty members prepare students for an exciting career on tomorrow's dynamic health care team.

A handwritten signature in black ink that reads "Morton Terry". The signature is fluid and cursive, with a long horizontal line extending from the end of the name.

Morton Terry, D.O., M.Sc., FACOI  
Chancellor



# doctor of health science program (d.h.sc.)

The D.H.Sc. program admits health professionals with diverse graduate education, work, and life experiences who have demonstrated the capacity to pursue a rigorous course of doctoral study and increasingly more responsible positions in health care. Applicants must hold a master's degree from an accredited college or university.

The D.H.Sc. program is designed to be completed in a distance-learning format. The online Doctor of Health Science Program is offered via NSU College of Allied Health and Nursing's state-of-the-art, Web-based distance learning technology. It is designed so that students can complete most of their coursework online from their own home or office, without compromising career or other obligations. Two one-week, on-campus institutes are required and are offered during the summer semester.

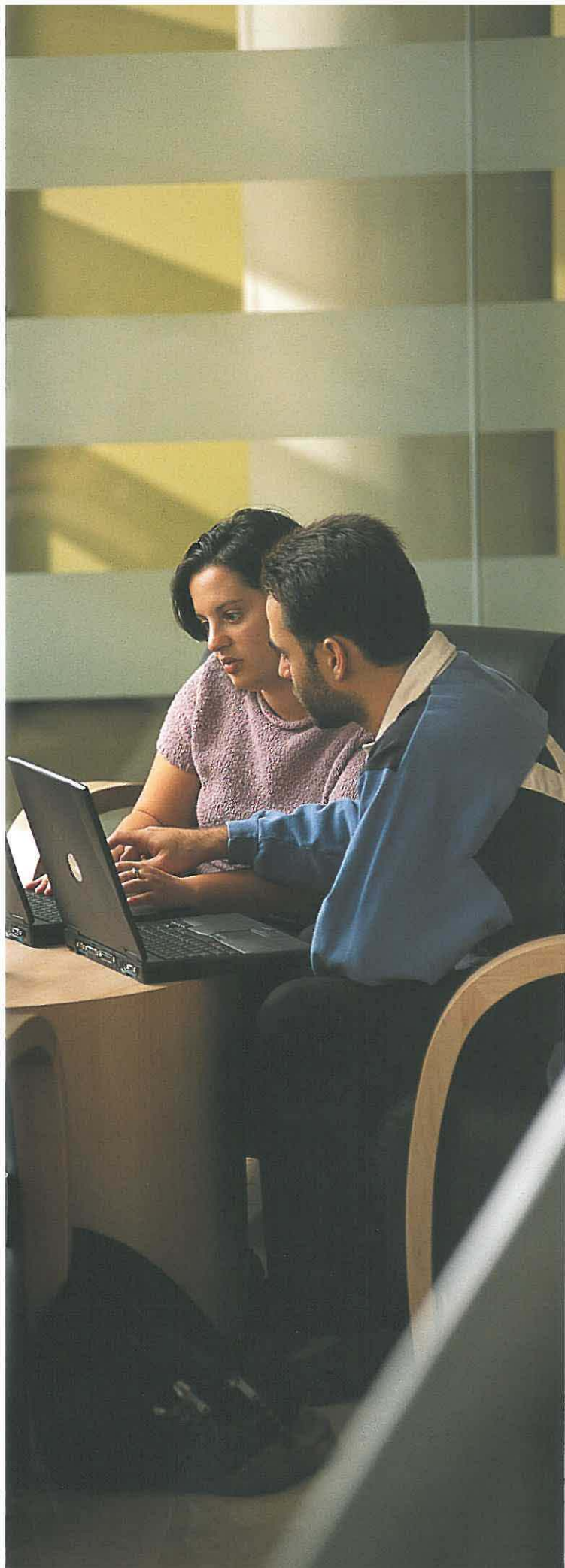
The D.H.Sc. equips health professionals with in-depth knowledge of current issues in health care. The student gains the knowledge necessary to identify and understand the changing health care environment and the impact these changes have on clinical practice, education, administration, and research.

## **The Role of the D.H.Sc. Program**

- Provide a well-rounded and diverse educational experience to adult learners in an online environment that allows them to continue gainful employment in their chosen field while attending and completing coursework.
- Enhance student leadership and health care knowledge through research and academic inquiry while using current and practical health care models.
- Enhance the understanding of diverse populations in health care and prepare the student to take a leadership role in the rapidly changing health care environment.
- Recognize and evaluate alternative forms of health care that may be encountered in areas of health care practice.
- Provide a bridge between clinical care, health care diversity, and critical inquiry.

## **nsu college of allied health and nursing mission statement**

**In the spirit of improving and maintaining optimum health conditions in the community, the College of Allied Health and Nursing prepares professionals with the skills necessary for the diagnosis, treatment, and prevention of diseases, for the support of the populace in maintaining proper health and safety, for the management of rehabilitative processes, and for the education of the community in understanding the interdependency of health, environment, social, and political factors. The College of Allied Health and Nursing endeavors to train both graduate and undergraduate professionals in the arts of improving the quality of life in the community.**



## letter from the dean

The health care marketplace is undergoing rapid change. The pace of this change has provided a formidable challenge for institutions that provide the educational programs for future health care professionals.



Nova Southeastern University's College of Allied Health and Nursing is committed to providing the highest quality of education to students in a variety of health care disciplines, including occupational therapy, physical therapy, and physician assistant studies, as well as audiology and the newly added nursing program. In addition, the college is committed to a life-long learning philosophy through the Master of Medical Science Program, the Ph.D. in physical therapy, and the O.T.D. and Ph.D. in occupational therapy, as well as the recent additions of the bachelor of health science (B.H.Sc.), doctor of health science (D.H.Sc.), and transition doctor of physical therapy (T.-D.P.T.). These new degrees for practicing health care professionals are delivered through the use of innovative distance technology.

The demand for doctoral level health providers, educators, and administrators continues to grow. Leaders in health care policy and public health are needed to shape the future of health care delivery systems both domestically and internationally. The Nova Southeastern University College of Allied Health and Nursing has accepted this challenge through the development of our online Doctor of Health Science (D.H.Sc.) Program. The D.H.Sc. curriculum features a multidisciplinary approach to health care education. The D.H.Sc. program brings together faculty members and students from various disciplines and specializations, which enhances the exchange of information, viewpoints, and ultimately, the overall educational experience.

The College of Allied Health is committed to providing health care educational opportunities in formats that meet the needs of prospective students in the community and adequately prepare graduates to assume greater leadership roles in health care delivery systems.

Richard E. Davis, PA-C, Ed.D.  
Dean, College of Allied Health and Nursing



# curriculum description

The D.H.Sc. has a two track curriculum. One is the generalist track. The second track has a concentration in Conflict Resolution and Theory. The generalist D.H.Sc. program requires completion of a minimum of 60 semester hours of coursework. This includes 48 semester hours didactic coursework, 10 semester hours practical coursework, and two semester hours for the Doctoral Objective Analysis. The D.H.Sc. with a concentration in conflict resolution requires a minimum of 64 semester hours and is a collaborative program between the College of Allied Health and Nursing and the Graduate School of Humanities and Social Sciences.

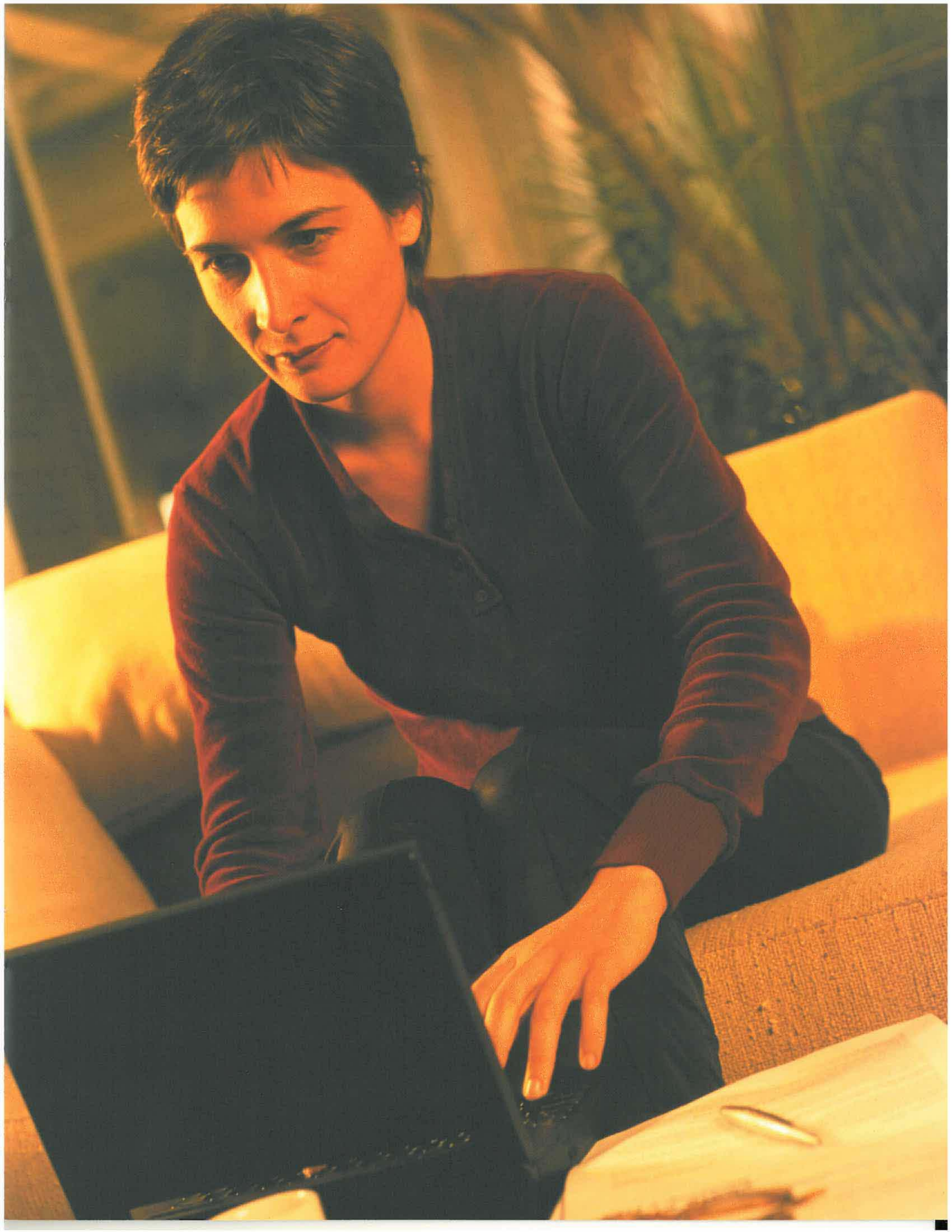
The D.H.Sc. program is designed for completion in a distance-learning format and requires only minimal on-campus time during two intensive one-week summer institute seminar sessions in Fort Lauderdale.

Both curricula are designed to build upon the scientific and general knowledge of the health care professional while focusing on the overall health care picture. Leadership, policy, diversity, and alternative methods of treatment are but a few of the areas stressed in the generalist curriculum, while the concentration in conflict resolution increases the study of human interaction and theory.

During the generalist course of study, the student must complete a practicum and internship approved by the D.H.Sc. program director in an area of health care including, but not limited to, health care leadership, education, policy, or delivery. The internship is used to expose the student to an area of health care not commonly experienced in the student's normal area of practice. Though two separate portions of the curriculum, the internship may be used as an area of research in preparation for undertaking the practicum. In the case of the conflict resolution concentration, the student will develop an internship and practicum in conjunction with the faculty of the Graduate School of Humanities and Social Sciences.

The coursework is professor-paced using state-of-the-art, Web-based delivery. The curriculum and coursework follow a standard 12-week semester calendar in conjunction with resident on-campus programs.

At the standard pace established by the program, the course of study can be completed in three years, though just over two years is possible. It is required that all coursework be completed within seven years.



# curriculum outline

COURSE #	COURSE TITLE	SEMESTER HOURS
<b>core courses</b>		
DHS 8000	Health Care for Diverse Populations . . . .	4
DHS 8030	Community Health Promotion and Disease Prevention . . . . .	4
DHS 8040	Health Care Ethics . . . . .	4
DHS 8050	National Health Care . . . . .	4
DHS 8070	Special Populations in Health Care . . . .	4
DHS 8090	Health Policy, Planning, and Management . . . . .	4
DHS 8110	Community Environmental and Occupational Health . . . . .	4

## practical coursework

DHS 8130	Internship . . . . .	5
DHS 8140	Practicum . . . . .	5
DHS 8150	Internship (Continuing Services) . . . . .	0
DHS 8160	Practicum (Continuing Services) . . . . .	0

## on-campus institutes

DHS 8010	Statistics and Research Methods . . . . .	4
DHS 8080	Conflict Resolution in Health Care . . . .	4
DHS 8170	Leadership in Health Care . . . . .	4

On-campus institutes require attendance on campus during the summer. These one-week sessions are located on the NSU Health Professions Division main campus in Fort Lauderdale, Florida. Two such institutes are required to complete the program for the D.H.Sc. degree. The statistics course is offered only during the summer and may be taken with either DHS 8080 or DHS 8170.

## electives—two courses must be completed

DHS 8100	Alternative and Complementary Medicine . . . . .	4
DHS 8180	Medical Writing . . . . .	4
DHS 8190	Health Care Education . . . . .	4
DHS 8200	Independent Study A . . . . .	4
DHS 8250	Independent Study B . . . . .	4
DHS 8300	Grant Writing . . . . .	4

COURSE #	COURSE TITLE	SEMESTER HOURS
<b>final analysis</b>		

DHS 8120	Doctoral Objective Analysis . . . . .	2
----------	---------------------------------------	---

(May only be completed during the last semester of coursework.)

## Course Roster for Concentration in Conflict Resolution

### core courses

DHS 8000	Health Care for Diverse Populations . . . .	4
DHS 8030	Community Health Promotion and Disease Prevention . . . . .	4
DHS 8040	Health Care Ethics . . . . .	4
DHS 8050	National Health Care . . . . .	4
DHS 8070	Special Populations in Health Care . . . .	4
DHS 8090	Health Policy, Planning, and Management . . . . .	4
DHS 8110	Community Environmental and Occupational Health . . . . .	4
CRHS 5000	Foundations and Development of Conflict Resolution . . . . .	3
CRHS 5040	Human Factors . . . . .	3
CRHS 7040	Theories of Conflict and Conflict Resolution I . . . . .	3

### practical coursework

CRHS 6130	Internship in Conflict Resolution . . . . .	3
CRHS 6160	Practicum in Conflict Resolution . . . . .	3

### on-campus institutes

DHS 8080	Conflict Resolution in Health Care . . . .	4
DHS 8170	Leadership in Health Care . . . . .	4
DHS 8010	Statistics and Research Methods . . . . .	4

On-campus institutes require attendance on campus during the summer. These one-week sessions are located on the NSU Health Professions Division main campus in Fort Lauderdale, Florida. Two such institutes are required to complete the program for the D.H.Sc. degree. The statistics course is offered only during the summer and may be taken with either DHS 8080 or DHS 8170.

Curriculum subject to change at the discretion and direction of the program

COURSE #	COURSE TITLE	SEMESTER HOURS
<b>electives—three semester hours from CRHS and four semester hours from DHS</b>		
DHS 8100	Alternative and Complementary Medicine . . . . .	4
DHS 8180	Medical Writing . . . . .	4
DHS 8190	Health Care Education . . . . .	4
DHS 8200	Independent Study A . . . . .	4
DHS 8250	Independent Study B . . . . .	4
DHS 8300	Grant Writing . . . . .	4
CRHS 5140	Negotiation Theory and Practice . . . . .	4
CRHS 6170	Violence Prevention and Intervention . . . . .	3
CRHS 7010	Philosophical and Social Issues . . . . .	3
CRHS 7020	Systems Design . . . . .	3
CRHS 7050	Theories of Conflict and Conflict Resolution II . . . . .	3

**final analysis**

DHS 8120	Doctoral Objective Analysis . . . . .	2
----------	---------------------------------------	---

(May be completed during the last semester of coursework.)



Students are provisionally admitted to a degree-seeking program based on a review of unofficial transcripts or other specific program admission requirements. However, this admission includes a condition that final and official transcripts, documents, and requirements must be received within 90 calendar days from matriculation. If these final and official transcripts, documents, and/or requirements are not received by that time, the student will not be allowed to continue class attendance. Financial aid will not be disbursed to a provisional/conditional student until he or she has been fully admitted as a regular student (all admissions requirements have been approved by the college/program admissions office). Students who have an unpaid balance 30 days from the start of the term will be assessed a \$50 fee.

# distance education

Nova Southeastern University is a pioneer in the area of distance education, having initiated distance education programs in 1972. It was the first university in the United States to offer graduate programs in an online format, with the creation of the electronic classroom. NSU has been offering online programs and programs with an online component since 1983. NSU was also the first to use the UNIX system to host online courses, and one of the first to use the Internet to support instruction.

In 1997, *Forbes* magazine ranked NSU as one of the nation's top 20 cyber-universities. Twice in a row, in 1998 and 2001, *the National Jurist* magazine ranked NSU's Shepard Broad Law Center at the top of its list of the most wired law schools in the nation. The university is also listed in *Princeton Review's* The Best Distance Learning Graduate Schools (1998).

At NSU, distance education is delivered using a variety of instructional delivery systems. Modes of delivery to students located at sites distant from the main campus include not only online courses via the Internet, but also other modes, such as the traditional classroom setting with a live instructor on-site, compressed video, and audio teleconferencing. Technologies such as the electronic classroom and audio teleconferencing (much like conference calling), add another dimension to the university's distance education programs by bringing instruction to the homes and offices of students.

Some programs use computer or telecommunication technologies exclusively, or in combination with a classroom setting. For example, some graduate programs require students to attend Summer Institutes—short, intensive instructional units on-campus—as part of their required program of study. Distance education students have access to educational support services through the main campus. These include the Electronic Library and computer software on central servers.

NSU students can participate in online courses via the Internet and World Wide Web from almost anywhere on the globe. Online courses involve Web pages to access course materials, announcements, and other information, plus a range of online activities that facilitate frequent student-teacher and student-student interaction. Faculty members and students interact via real-time electronic classrooms, online forums using threaded bulletin boards, real-time chatrooms, online submission of assignments in multimedia formats for review by faculty members, electronic mail, and the Electronic Library.

NSU offers a wide range of online programs. For example, NSU's School of Computer and Information Sciences has more than 800 online students and offers online master of science programs in computer science, computer information systems, management information systems, and computing technology in education. Many of these programs are now part of the Electronic Campus of the Southern Regional Educational Board (SREB). It also offers Ph.D. programs that use a combined online and on-campus format. Other examples include an online M.B.A. and master's degree in accounting and online courses for teachers.

Over the past five to ten years, many colleges and universities have been developing distance education programs. Nova Southeastern University has 27 years of experience in the development, delivery, and evaluation of distance education programs. Approximately 55 percent of all NSU students attend class through the use of some form of distance education modality (e.g., classroom instruction at distant sites, compressed video, and computer-mediated instruction). The university's National Ed.D. Program for Educational Leaders—which began in 1972—and other degree programs have served as models of distance education design for institutions across the nation.

# distance education support

Distance education students in the Doctor of Health Science (D.H.Sc.) Program are provided with NSU computer accounts including email. Students, however, must obtain their own Internet service providers (ISP) and use their own computer systems. New students receive an orientation and extensive online support on computer and software requirements, online access, online tools and methods, and library resources.

Online interactive learning methods involve Web pages to access course materials, announcements, the NSU Electronic Library, and other information, plus a range of online activities that facilitate frequent student-professor interaction. Faculty members and students interact via online forums using threaded bulletin boards, chatrooms, and email. Students are able to submit assignments as email attachments, through the use of online forms sent directly to program instructors, fax-to-fax, fax-to-email, and through WebCT. Some online courses may include electronic classroom sessions.

Online students have access to books, journal articles, microfiche, dissertations, index searches, catalog

searches, and reference librarians. The online medical database collection at NSU is extensive and includes access to quality subscription services free of charge to the student.

Distance students may request library materials using fax, mail, or online forms. To contact Distance Library Services (DLS) by phone, call 800-541-6682, ext. 4602, or (954) 262-4602. Use the toll-free fax number to order library materials: 888-347-3627, or in Broward County, fax (954) 262-3947. Students can send email to DLS at [library@nsu.nova.edu](mailto:library@nsu.nova.edu), or can reach DLS via the Web site at [www.nova.edu/library](http://www.nova.edu/library). All materials mailed by the DLS office are sent by first-class mail. When books are borrowed, the student will have to pay a small charge for third-class postage to return the books. Books are loaned for one month. Periodical copies or ERIC documents need not be returned.

NSU students involved in distance education are fully supported in their educational endeavors. Great effort has been made to insure that educational opportunities and quality are in place for each student.

# application procedures

Applicants for admission must submit or be responsible for submission of

1. a completed application form along with a \$50 non-refundable application fee
2. two letters of evaluation from supervisors or colleagues, clinical or non-clinical

These forms are supplied in the application package.

3. official transcripts sent directly from all previously attended undergraduate, professional, and graduate institutions to

## **NOVA SOUTHEASTERN UNIVERSITY**

Enrollment Processing Services (EPS)

College of Allied Health and Nursing

D.H.Sc. Program Admissions

3301 College Avenue

P.O. Box 299000

Fort Lauderdale, Florida 33329-9905

Phone: (954) 262-1101

Fax: (954) 262-2282

4. all coursework from international institution(s), if applicant attended or is a graduate of any international institution(s)

Applicant is responsible for contacting one of the evaluation services listed here. The official evaluation must be sent directly from the evaluation service to the EPS.

World Education Services, Inc.

P.O. Box 745

Old Chelsea Station

New York, New York 10113-0745

(212) 966-6311

Josef Silny & Associates

P.O. Box 248233

Coral Gables, Florida 33124

(305) 273-1616

(305) 273-1338 (fax)

[www.jsilny.com](http://www.jsilny.com)

Educational Credential Evaluators

P.O. Box 514070

Milwaukee, Wisconsin 53203-3470

(414) 289-3400

[www.ece.org](http://www.ece.org)

5. a complete resume or CV
6. copies of national and professional certifications or licenses by recognized certifying body (if applicable)

Completed applications must be sent to

## **NOVA SOUTHEASTERN UNIVERSITY**

Enrollment Processing Services (EPS)

College of Allied Health and Nursing

D.H.Sc. Program Admissions

3301 College Avenue

P.O. Box 299000

Fort Lauderdale, Florida 33329-9905

The D.H.Sc. Office of Admissions works on a rolling admissions basis. Applications are accepted year-round. To insure that your application receives prompt consideration, you should apply early. All final documentation must be received by the EPS no later than one month prior to your intended registration date.

The D.H.Sc. committee on admissions will not consider an application until all required fees, credentials, transcripts, and test scores have been received by the EPS.

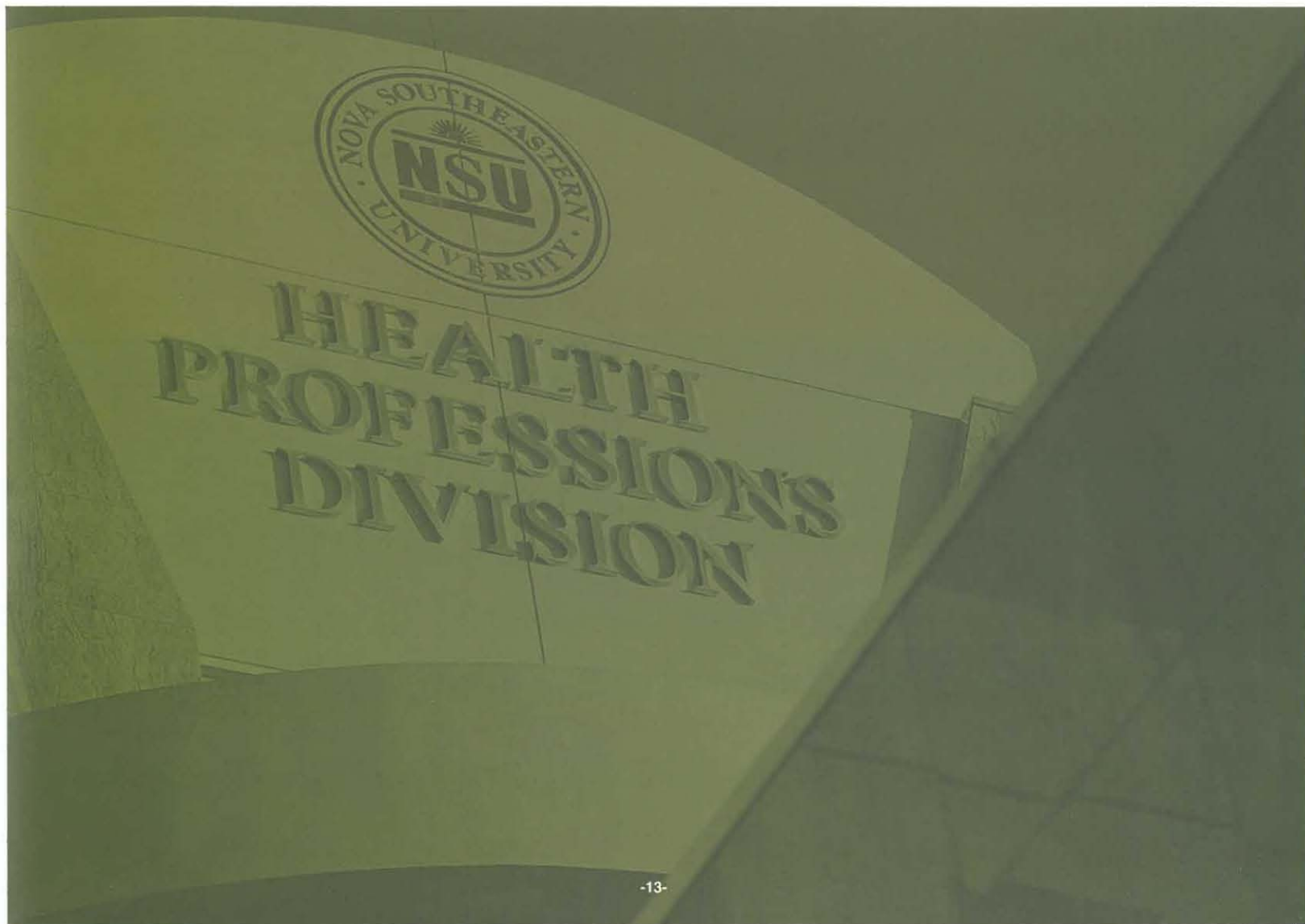
# admission requirements

Prospective D.H.Sc. students are selected by the committee on admissions that considers the overall qualities of the applicant. Areas of consideration include application content, academic record, prior health care experience, letters of evaluation, and personal motivation. In special circumstances, a personal interview with members of the committee on admissions may be required.

1. Prior to matriculation, applicants must have completed a master's degree from a regionally accredited college or university.
2. Applicants with a cumulative master's degree G.P.A. below a 3.0 on a 4.0 scale are required to submit official scores from the Graduate Record Examination (GRE)

general test to the Office of Admissions. Our school code is 5522. GRE scores may be obtained by contacting Graduate Record Examination at their Web site: <http://www.gre.org> or by telephone: (609) 921-9000.

3. Prior health care experience is required and is considered for admission. Applicants must submit verifiable information about prior health experience in order to be competitive for admission to the program.
4. All applicants must show evidence of computer skills through coursework or self-study prior to the end of the first term. Students may obtain instruction through the NSU Student Microcomputer Laboratory, the D.H.Sc. Orientation Center, or other training facilities.





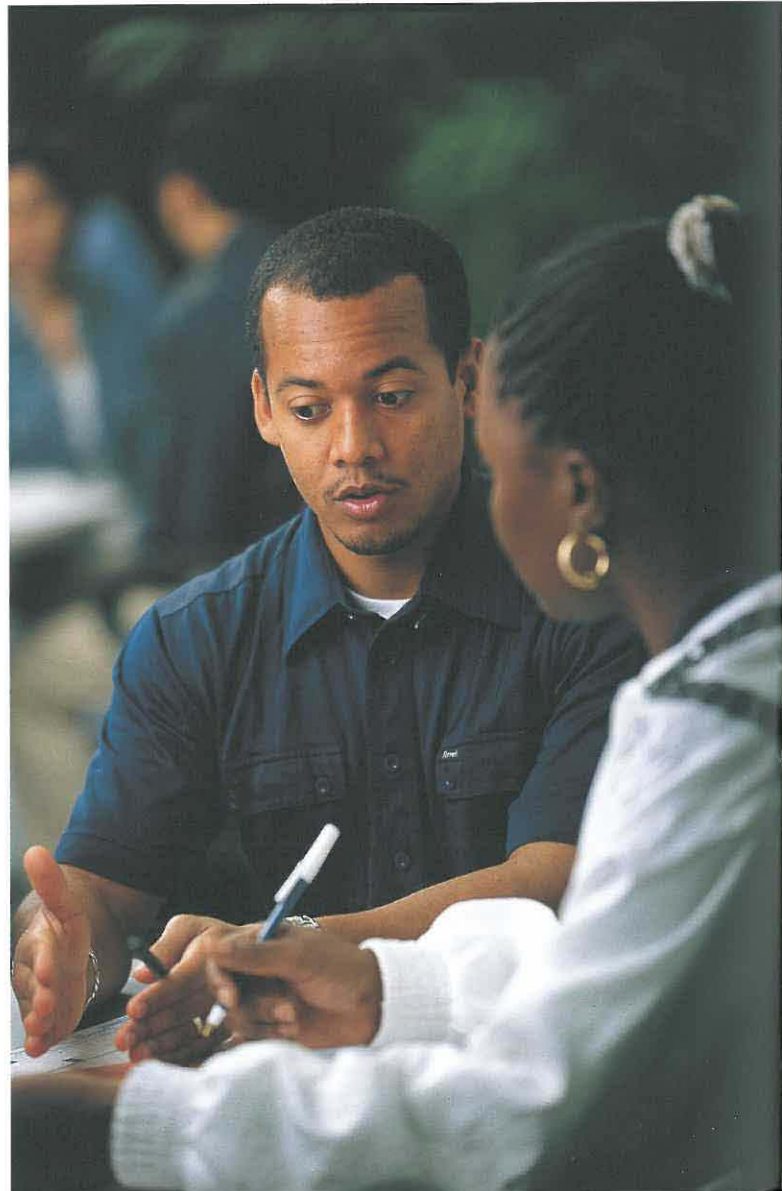
# computer requirements

**ALL STUDENTS ARE REQUIRED TO HAVE A COMPUTER WITH THE FOLLOWING RECOMMENDED MINIMUM SPECIFICATIONS:**

- Pentium; 700 MHz minimum processor
- 128 MB RAM
- Video and monitor capable of 1024 x 768 resolution or better.
- CD ROM Drive
- Full duplex sound card and speakers
- 56.6 baud modem (DSL or CABLE modem is a plus in an online program)
- Internet connection with private Internet service provider (ISP) for access from home to the Internet
- Windows 98 2nd Edition /2000/ME/XP or NT
- Microsoft Office 2000 with PowerPoint, Word, and Excel minimum
- Surge suppressor electrical outlet
- Suggested option: Zip Drive

# summer institutes

Summer Institutes are a tradition at Nova Southeastern University that offer students, faculty members, and program staff the opportunity to meet and interact in person. Institutes are held typically in July at the Fort Lauderdale campus for all participants in the program. Daily meetings, discussions, and presentations provide opportunities for face-to-face sharing of experience, expertise, and views on matters of primary concern to health care communities, administrators, and practitioners across the nation. Professors not only lecture formally, but also encourage broad, open discussions on various topics. Students meet formally and informally, in small and large groups, to share ideas that are shaping health care and society.



# online medical databases for all nsu students

- AARP Ageline
- AIDSLINE—AIDS Information Online
- Alt-HealthWatch
- American Speech-Language-Hearing Association Database
- Biological Sciences (Cambridge Scientific Abstracts)
- CancerLit (Ovid Web)
- Collaborative Review Groups and Protocols
- Combined Health Information Database (CHID)
- CINAHL (Nursing and Allied Health)
- Evidence-Based Medicine Reviews (EBMR)
- EBM Cochrane Database of Systematic Reviews (COCH)
- EMBASE Drugs & Pharmacology (Ovid Web)
- Harrison's Online (Textbook of Medicine—full text)
- Health and Psychosocial Instruments
- Health Reference Center
- HealthSTAR
- Information Quest
- International Pharmaceutical Abstracts
- Journals@Ovid (full text)
- Lexis-Nexis Academic Universe
- MD Consult (42 full-text medical textbooks)
- MEDLINE
- NetLibrary
- NewsBank ScienceSource Collection
- ScienceDirect
- Sport Discus (Ovid Web)
- UpToDate
- Visionet

## tuition and fees

Anticipated tuition for the 2003–2004 D.H.Sc. program (subject to change by the board of trustees without notice) is \$400 per credit hour.

Application fee: \$50

Additional expenses and fees may be incurred. Examples include, but are not limited to, travel to and from campus, graduation fees, books, etc.

## financial aid

The primary financial responsibility for a student's education rests with the student and his or her family, but economic circumstances for some families may make it necessary for the student to obtain assistance from other sources.

The purpose of the Student Financial Aid Program at Nova Southeastern University is to help as many qualified students as possible to complete their health professions education. Various loans, scholarships, and grants are available to qualified students to help ease the high cost of a health professions education. These financial assistance programs are described in a separate university publication, *NSU's Guide to Student Financial Assistance*.

For a copy or information, contact

**NOVA SOUTHEASTERN UNIVERSITY**

Department of Student Financial Aid

3301 College Avenue

Fort Lauderdale, Florida 33314-7796

(954) 262-3380

800-806-3680

## 1 terry administration building

### FIRST FLOOR

- Student Affairs
- Admissions
- Financial Aid
- HPD Cafeteria

### SECOND FLOOR

- College of Allied Health and Nursing
  - Audiology Department
  - Health Sciences Department
  - Occupational Therapy Department
  - Physical Therapy Department
  - Physician Assistant Department

### THIRD FLOOR

- College of Medical Sciences
- College of Pharmacy

### FOURTH FLOOR

- College of Osteopathic Medicine
- College of Optometry

### FIFTH FLOOR

- HPD Administration
- Public Health Program
- Nursing Department
- Area Health Education Center

## 2 assembly building

- Finkelstein Auditorium (125 seats)
- Jonas Auditorium (125 seats)
- Melnick Auditorium (125 seats)
- Resnick Auditorium (125 seats)
- Terry Auditorium (125 seat)
- Auditoria A, B, and C (125 seats each)
- Robert A. Steele Auditorium (500 seats)
- Hull Auditorium (250 seats)
- Seminar Rooms

## 3 library/laboratory building

### FIRST FLOOR

- Drug Information Center
- "Harvey" Cardiac Patient Simulation Room
- HPD Library
- Student Computer Laboratory
- Patient Simulation Center

### SECOND FLOOR

- Occupational Therapy Laboratories
- Optometry Laboratories
- Physical Therapy Laboratory
- Student Lounge
- FOMA Osteopathic Manipulative Medicine Laboratory

### THIRD FLOOR

- Basic Science Laboratories
- Gross Anatomy Laboratories
- Microscopy Laboratory
- Research Laboratories
- Moran Pharmacy Practice Laboratory
- Pharmacokinetics Laboratory
- Pharmaceuticals Laboratory

## 4 pharmacy and pharmaceutical care center

## 5 sanford i. ziff health care center

### FIRST FLOOR

- Family Medicine
- Occupational Therapy
- Pediatrics
- Dermatology
- Physical Therapy
- Radiology

### SECOND FLOOR

- Optometry Clinics
- Optometry Dispensary

### THIRD FLOOR

- Business Offices
- Specialty Clinics
  - Cardiology
  - Internal Medicine
  - Osteopathic Manipulative Medicine
  - Pulmonary Medicine
- Emergency Medicine Training Center



## 6 dental medicine building

### FIRST FLOOR

- Oral Medicine and Radiology Clinic
- Oral Surgery Clinic
- Student Dental Clinic
- Clinic Support Laboratory
- Predoctoral and Postgraduate Oral Surgery

### SECOND FLOOR

- Faculty Practice
- Simulation Lab
- Postgraduate Endodontics
- Postgraduate Orthodontics
- Postgraduate Pediatric Dentistry
- Postgraduate Periodontics
- Postgraduate Prosthodontics

### THIRD FLOOR

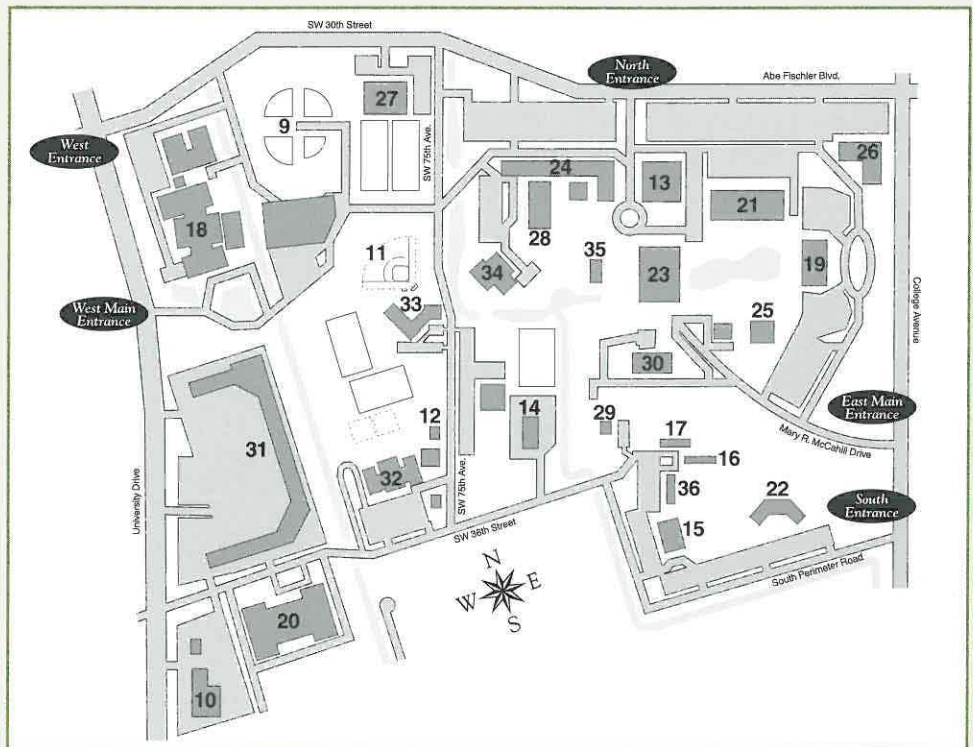
- Research Laboratories
- Seminar Rooms
- Central Sterilization Area
- Dispensing
- Faculty Offices
- Student Dental Supply Depot

## 7 parking garage

## 8 hpd assembly building

- Auditorium
- Computer Science Laboratory
- Seminar Rooms
- Physical Assessment Laboratory
- Compliance Office

A.D. Griffin Sports Complex with Lighted Softball Fields	9
Administrative Services Center	10
Athletics Field	11
Athletics House	12
Carl DeSantis Building	13
Central Services Building	14
Cultural Living Center	15
Farquhar Residence Hall	16
Founders Residence Hall	17
Health Professions Division Complex	18
Horvitz Administration Building	19
Jim & Jan Moran Family Center Village	20
Leo Goodwin Sr. Hall	21
Leo Goodwin Sr. Residence Hall	22
Library, Research, and Information Technology Center	23
Library and Main Student Parking Garage	24
Mailman-Hollywood Building	25
Maltz Psychology Building	26
Miami Dolphins Training Facility	27
Parker Building	28
Recreation Complex (Recplex)	29
Rosenthal Student Center	30
University Park Plaza	31
University School Lower School	32
University School Middle School	33
University School Upper (Sonken Building)	34
University School (Sonken Building East)	35
Vettel Residence Hall	36





NOVA SOUTHEASTERN UNIVERSITY  
Health Professions Division  
3200 South University Drive  
Fort Lauderdale, Florida 33328-2018

Office of Admissions  
(954) 262-1101 • 800-356-0026, ext. 1101  
[www.nova.edu/dhs](http://www.nova.edu/dhs)