

1999

Bachelor of Science in Professional Management Online 1999

Nova Southeastern University

Follow this and additional works at: https://nsuworks.nova.edu/hsb_ugcoursecatalogs

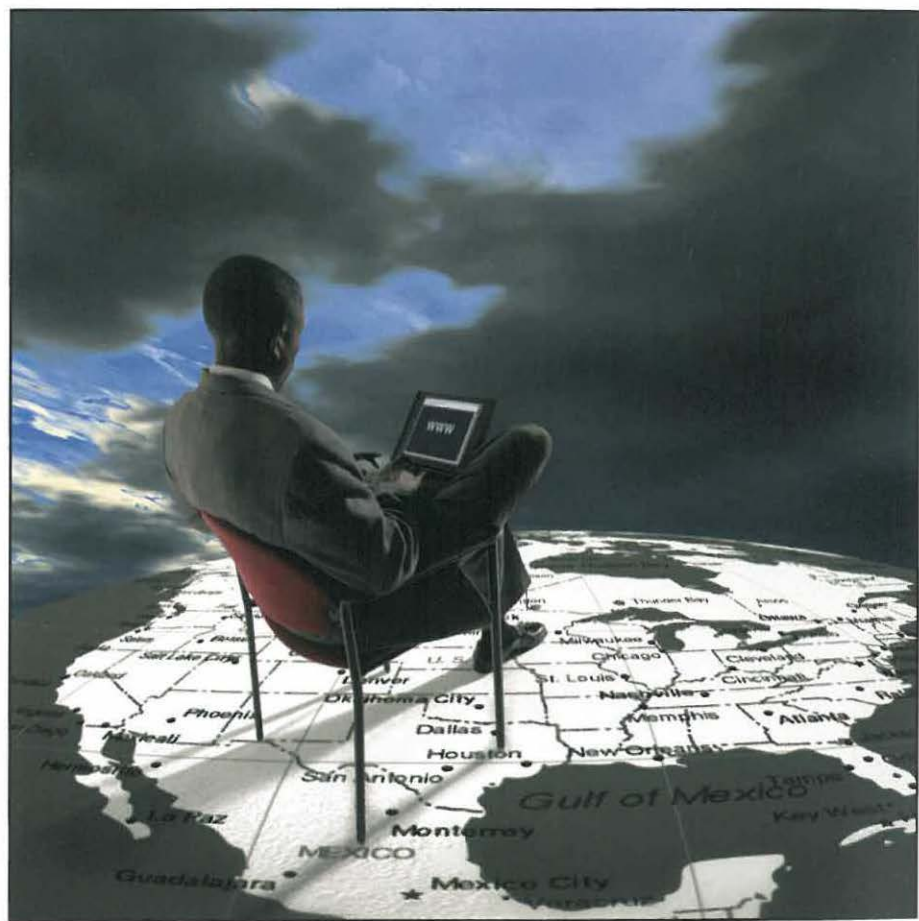
 Part of the [Business Commons](#)

*Bachelor of Science
in Professional Management*

**We work
with you
online.**



We work
with you
innovatively.



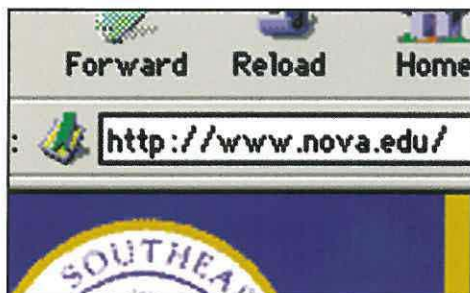
If you're a working professional who can't attend school full time, yet you want to earn a bachelor's degree in management, look no further than Nova Southeastern University (NSU).

Our mission of bringing education to adult students led us to become pioneers in the field of distance education 25 years ago—when the proposition seemed controversial at best. Since 1979, we have offered the Bachelor's of Professional Management (BPM) Program to thousands of working adult students.

In fact, BPM has become our most popular undergraduate degree, and we present the program regularly at corporate and community locations throughout Florida, Louisiana, the Bahamas, Jamaica, and Panama.

Currently, the BPM Program comprises more than 1,300 active students with a wide range of undergraduate experiences. They all share the goal of earning a management degree in addition to the undergraduate course work they already have completed. Our off-campus students receive the same program delivered on campus, and all BPM courses are designed and facilitated by NSU faculty members.

Today, we carry on our tradition of innovation by offering you the BPM Program online.



We work with you electronically.

The BPM Online Program is delivered by the Department of Business and Administrative Studies at the Farquhar Center for Undergraduate Studies at Nova Southeastern University. BPM Online is structured to help you achieve maximum learning with maximum flexibility. To complete this 66-credit, upper-level program, you take two courses at a time over an eight-week period—without ever leaving the comfort of your home or office. You simply need access to a Pentium-based computer and an Internet service provider.

BPM Online courses have learning outcomes identical to those of classroom-based courses: only the delivery format differs. To make BPM Online classes as efficient, personal, relevant, and successful as those in our ground-based program, we use these electronic tools:

email

As a BPM Online student, you'll be given an NSU computer account with full email capabilities. You'll use email for three major types of communication: to correspond with the BPM faculty and staff when you don't need an immediate response; to communicate with your entire class via a program alias set up by the program office; and to submit some course assignments.

world wide web

You access each course through the World Wide Web; and on our Web site, you'll find the elements of a traditional program: a syllabus describing course content; required readings; assignments; information on tests and projects; grading policy; lecture notes; study guides; and detailed discussion of learner outcomes and measurements. An online schedule ensures that you know exactly what to do each week of the course.

NSU offers first-class distance library resources, which include online databases, full-text availability, and interlibrary loan. All services are available through the World Wide Web and are free of charge to BPM Online students.

electronic bulletin board

Each BPM Online course has a Web-based electronic bulletin-board system you can access day or night from anywhere in the world. By posting questions and answers in a “running dialogue” format, you, your colleagues, and your professors record your collective discoveries. Faculty members use this vehicle to handle class-wide issues, and all members of BPM Online can check the electronic bulletin board while traveling. In many classes, assignments posted to the bulletin board serve as the basis for extensive classroom discussion.

chatrooms

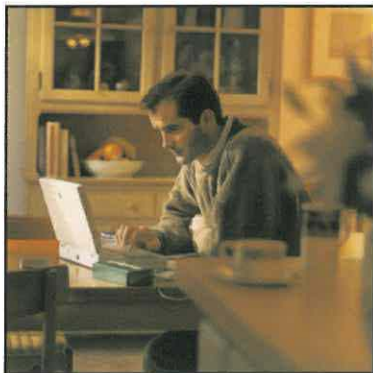
Web-based chatrooms enable BPM Online instructors and students to communicate directly and immediately with one another. At a predetermined time, all interested parties log on and exchange ideas. Chatrooms may be used to solve homework problems or to provide supplementary lectures, but they are most often used for question-and-answer sessions between students and professors.

computer competencies and requirements

To succeed in this electronic environment, you'll need hands-on experience with these technological functions:

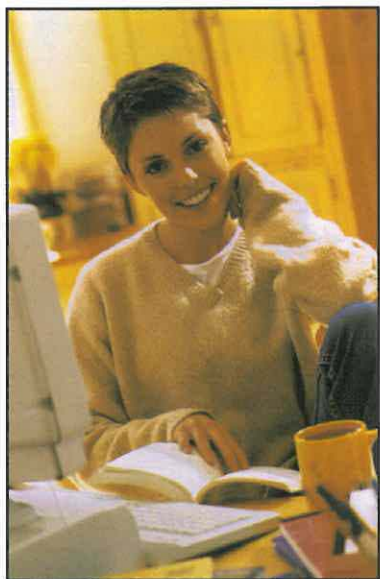
- email composition and file attachments
- downloading and uploading of files
- visiting electronic bulletin boards and chatrooms
- using the Office 95 (minimum) software suite

Access to a Pentium-based computer with a 28.8-speed modem and to the Internet via an Internet service provider are program requirements.



We work with you **individually.**

BPM Online faculty members are the same professors who teach in the BPM classroom-based program. Each has an advanced degree and expertise in his or her curricular area; many are full-time NSU professors; and many have written articles and books pertinent to the field. Most important, our BPM Online faculty is dedicated to excellence in teaching, and our small class environment guarantees you individual attention.





*Nova Southeastern University's Administration Building,
Fort Lauderdale, Florida*

**If you think the
BPM Online Program
sounds promising, contact us at
Nova Southeastern University
and we'll answer your questions**

completely.

Web site:

<http://www.polaris.nova.edu/Business/online>

Email:

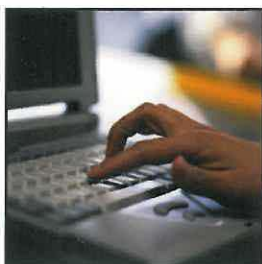
bpminfo@polaris.nova.edu

Phone:

Toll free 800-338-4723, ext. 8101 or locally (954) 262-8101

Mailing address:

NOVA SOUTHEASTERN UNIVERSITY
BPM Online
Farquhar Business Annex
3301 College Avenue
Fort Lauderdale, FL 33314-7796



Online Bachelor of Science Degree in Professional Management Program

NOTICE OF NONDISCRIMINATION

Nova Southeastern University admits students of any race, color, sex, age, nondisqualifying disability, religion or creed, or national or ethnic origin to all the rights, privileges, programs, and activities generally accorded or made available to students at the school, and does not discriminate in administration of its educational policies, admissions policies, scholarship and loan programs, and athletic and other school-administered programs.

Nova Southeastern University is accredited by the Commission on Colleges of the Southern Association of Colleges and Schools (1866 Southern Lane, Decatur, Georgia 30033-4097; telephone number: 404-679-4501) to award bachelor's, master's, educational specialist, and doctoral degrees.