

3-1-1970

## Novacrat, February-March 1970

Nova University

Follow this and additional works at: [https://nsuworks.nova.edu/nsudigital\\_novacrat](https://nsuworks.nova.edu/nsudigital_novacrat)

---

### NSUWorks Citation

Nova University, "Novacrat, February-March 1970" (1970). *The Novacrat*. 29.  
[https://nsuworks.nova.edu/nsudigital\\_novacrat/29](https://nsuworks.nova.edu/nsudigital_novacrat/29)

This Newsletter is brought to you for free and open access by the NSU Early Publications at NSUWorks. It has been accepted for inclusion in The Novacrat by an authorized administrator of NSUWorks. For more information, please contact [nsuworks@nova.edu](mailto:nsuworks@nova.edu).

# THE NOVACRAT



Official Publication  
Gold Key of  
Nova University

February - March, 1970

Volume 5 - No. 2-3

## RICHARDSON OF OCEANOGRAPHY TELLS WHY NOVA UNIVERSITY CAN LEAD IN BETTERING QUALITY OF SOUTH FLORIDA ENVIRONMENT



*Dr. William S. Richardson, author of the lead article in this issue of the Novacrat, shown enjoying Steve McQueen, movie actor, a guest recently at the Oceanographic houseboat laboratory. McQueen and the members of his company, "Solar Productions," were studying the possibilities of a motion picture with an Oceanography background.*

### **Problem-Oriented Nova Could Handle Case Studies On Water, Air, Flood Control, Pollution, National Park, Seminoles, Fishermen, Everglades Basin, Recreation and More**

Dr. William S. Richardson, Director of the Oceanographic Laboratory and Professor of Physical Oceanography discusses: "Nova, a Problem Oriented University?"

All universities have, as a fundamental reason for their existence, a dedication to the service of mankind.

They may fulfill this dedication in a variety of ways. Most large universities provide undergraduate and graduate education to relatively large numbers of students and these students emerge enriched in knowledge and culture to become the predominate movers and shakers of our society.

*(Continued page 2)*

# NOVA: A PROBLEM-ORIENTED UNIVERSITY

*(Continued from page 1)*

We are well aware of the turmoil associated with this process at the present time, but that is not the subject of this discourse. One can only say that these difficulties must be rectified since there are no alternative institutions to provide this service.

## **SOLUTION TO PROBLEMS SECOND TYPE OF SERVICE**

We are concerned here with a second type of service to mankind, which universities must perform; again because we lack, in large measure, any alternative institutions to provide the service. This is the solution to some of our outstanding current problems.

It might be argued that the problems of the cities, the ghettos, education, the quality of our environment and such, are social, economical, political ones which are properly the concern of our governments.

Indeed, they are, but one knows that they cannot be solved without the concentrated effort of the best minds of our times and that the universities must provide the research and knowledge on which the solutions are based.

Certainly, the technological advances which have contributed so much to the affluence of our society have their roots in the universities. This very affluence has had side effects which are major contributors to our problems.

How well are the universities equipped to lead us out of our sociological dilemmas? If we could answer this, perhaps we could find a major role for a new university, such as Nova.

## **OF GREAT CONCERN IS QUALITY OF ENVIRONMENT**

Let us consider, as an example, the question of the improvement of the quality of our environment.

This is a matter of great concern these days and one to which both the Federal and local governments are apparently prepared to make a major financial commitment.

How can the universities help?

Unfortunately, universities are not really properly organized to do very much.

For purposes of teaching, they are departmentalized in the cultural disciplines, i.e., physics, chemistry,

economics, law, etc. But, the problems of environmental quality are not of this sort.

They are interdisciplinary problems in the widest sense of the word, involving not only the physical sciences and engineering, but social, economic, political and educational aspects, as well.

In response to such challenges, a university normally establishes an interdepartmental committee. Characteristically, these committees meet occasionally, give considerable lip-service to cooperative activities, occasionally generate financial support for cooperative studies and then everybody takes his part of the plan and money back to his department. Here he forgets the overall problem by immersing himself in certain aspects of it in which he is particularly interested or which are already part of his research program.

This is certainly not the road to solutions! And, it is doubtful whether much can be done to change this situation in existing large universities.

## **PROBLEM ORIENTED UNIVERSITY IS CLEAR ANSWER**

The alternative is clear; new organizations must be established.

In particular, there is a great need for a problem orientated university whose major function is to provide a broad, interdisciplinary approach to the problems of environmental quality.

In such a university, there would be a melding of physical, biological and social scientists with engineers, economists, educators and political scientists.

Such persons would not be organized in departments but would work closely together on the problem, each making his contribution in a vigorously interacting group.

Probably work would proceed by case studies in which one or more large but well defined problems are worked through, each member contributing his piece to the solution of the puzzle.

## **NEED HERE IN SO. FLORIDA**

Numerous examples of such case studies could be found right here in South Florida, i.e., the total problem of water management. Such an effort could have a tremendous impact on the future of this area and

involves not only water but the air, the status of the Flood Control District, the National Park, the Seminoles, the fishermen, recreation and other parts too numerous to mention.

No solution would be found independent of education of the public and the push for political action, both of which would be part of the programs.

#### **CASE STUDIES BEST WAY TO DEVELOP COMPETANCE**

Certainly, there are plenty of other cases which might be undertaken. Some are so difficult it is impossible to know where to begin.

A major function of the university would be to educate young people to a high level of competence in the disciplines, but to give them, simultaneously, the broad background of interests and concern which will be necessary if they, in their turn, are to make contributions to the solution of this type of problem.

The best way to provide this education is at the graduate school level, but it might be well to consider the undergraduate education of engineers who will later be working on the practical aspects of repairing the damage which past and present engineers have participated in causing.

#### **MAJOR FUTURE FOR SCHOOL SO DEDICATED**

It seems likely that a university dedicated to the cause of finding real solutions to some of the pressing problems of mankind would prosper and become a major influence in the future of our community and our nation.

The desire to remedy some of our difficulties is foremost in the minds of our people and the commitment, both moral and financial, is now being made.

Perhaps Nova University could become a leader in the fulfillment of this commitment.

## **NOVA DAY AT RACES IN APRIL**

"Nova University Day at the Races" at Gulfstream will be Wednesday, April 22.

The Donns donate proceeds of one day's racing at the big track to the support of Nova University. It is one of the schools largest sources of support.

Club House tickets are \$4.00; Grand Stand, \$2.00.

## **GOLD KEY INVITED**

Robert J. Havlik, Director of Nova University Libraries, is spearheading a get-acquainted-with-our-library program in the Parker Building on the Davie Campus for retired scientists and engineers in the South Florida area.

Active professional men and women and leaders of civic groups are also invited.

A highlight of the program will be a talk by Dr. Joel Warren of the Life Science Center and a guided tour through the Cancer Research Laboratory on the third floor of the Parker Building. Those delightful Rafferty refreshments will be served.

All GOLD KEYSMEN and their ladies are invited.

Make reservations via 587-6660. Bob Havlik's parties are well worthwhile.

## **DERBY BALL MARCH 20**

The Florida Derby Ball, whose honorary chairman are the James Donns and James Donn, Jr., the Jim Farquhars, Abraham Fischlers, Fred Flipses, Ed Rosenthal, Irvin Cowans, Leo Goodwin, Jr. and John B. Squires, will be held at the Diplomat Hotel, March 20.

The Clint Gambles are Ball Chairmen and "Ginny" Anheuser is Executive Director.

Other GOLD KEY people active in developing the affair are the R. O. Barbers, Greg Barrys, Jim Bishops, Tinsley Ellises, Stan Emersons, Ralph Friedmanns, Myron Segals and Kelly Siddalls.

The Derby Ball benefits Nova University.

## **THIS VERDANT LAND**

Dr. Bruno Schmidt, Poet Laureate of Broward County, wrote the lyrics and his wife, Ruth Schmidt, composed the music for "This Verdant Land," a freedom song about America. The song, to be played and sung in four-four time in refined, lofty style, has been internationally copyrighted.



*George W. English, Goldkeysman and Chairman of the Board of the First National Bank, accepts from Past GOLD KEY President Cy Young a Resolution honoring the memory of the late W. Howard Allen, Bank President, Nova Trustee and a founding member of GOLD KEY.*

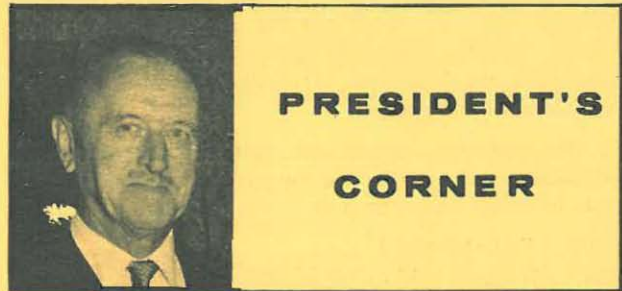
## DISNEYLAND IN FLORIDA BUILDING ON GRAND SCALE

Holt McPherson, editor of the High Point, N.C., Enterprise, a former resident and a frequent visitor to Fort Lauderdale, recently made the following comments about Florida's new Disneyland:

"... So dismayed was the late Walt Disney at the way honky tonks sprang up around his Disneyland project that he conceived a new - and greater - fantastic destination resort in Central Florida for which his company acquired 27,500 acres - nearly 43 square miles - so no such ugly encrustation may develop there as it has here . . .

"Nearly 100 million visitors from every nation in the world have seen Disneyland, which calls itself "the happiest place on earth." But what has happened here is merely a prelude of what's expected of the Walt Disney World already appearing on the skyline 15 miles southwest of Orlando after two years of earth moving and site preparation . . .

"What its eastern "Orlando" counterpart portends is something even greater. We can hardly wait for the 1971 opening promising to generate 50,000 jobs and \$6.6 billion in measurable economic benefits to the State of Florida in its initial decade.



## PRESIDENT'S CORNER

I want to thank our members for the thoughtful replies to our recent questionnaire.

Results are being tabulated and improvements will come from your suggestions.

\* \* \* \* \*

Don't forget Nova's "Day at Gulfstream," Wednesday, April 22.

\* \* \* \* \*

The Library Party is March 20. All GOLD KEYSMEN are invited.

\* \* \* \* \*

We will have news on the "Disney Development in Florida Film" showing shortly.

*Stan Emerson*  
Stanley Emerson,

## SYMPATHY

Expressions of deep sympathy were extended to Dr. Louis Parker over the death of his son; to Leo Goodwin, Sr. who lost his wife; and to Melvin R. "Cy" Young, who lost his mother.

## THE NOVACRAT

Published monthly in the interest of GOLD KEY of Nova University

Stanley A. "Stan" Emerson - President  
John E. Morris, Jr. - Vice President  
Gregory J. Barry - Treasurer  
Frederick B. Youngblood - Ex-officio  
M.R. "Cy" Young  
Leo Goodwin, Jr.  
Earl A. Ross  
Earle M. Scott  
Dr. Charles Forman

August Burghard - Editor  
Executive Director