

CONNECT - ENGAGE - INSPIRE



2022  
Teaching and Learning Conference  
NSU Florida

**PUTTING IT ALL TOGETHER:  
UTILIZING STUDENT-CURATED PORTFOLIO PROJECTS  
TO ENGAGE AND IMMERSE STUDENTS FROM WEEK 1**

**Christi M. Navarro, PhD**

Presented at the  
2022 Teaching & Learning Conference

November 3, 2022



# ABOUT THE SPEAKER




PhD, Public Health  
MS, Educational Leadership



Assistant Professor  
Public Health



Community Health  
Mental Health  
Epidemiology Honors  
Public Health Planning  
MPH Capstone



# LEARNING OUTCOMES

**DEFINE** the Gradual Release of Responsibility Framework

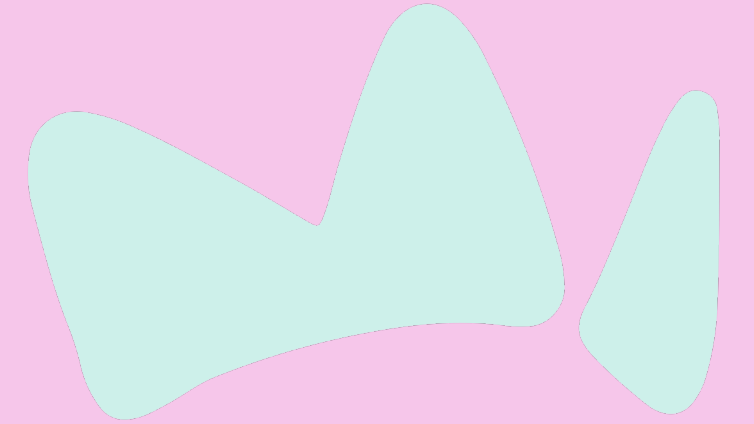
**DESCRIBE** a multi-faceted portfolio project to engage learners meaningfully throughout the semester

**USE** an assignment with your learners to synthesize course concepts, promote shared learning, and practice oral presentation skills





# WORKSHOP AGENDA



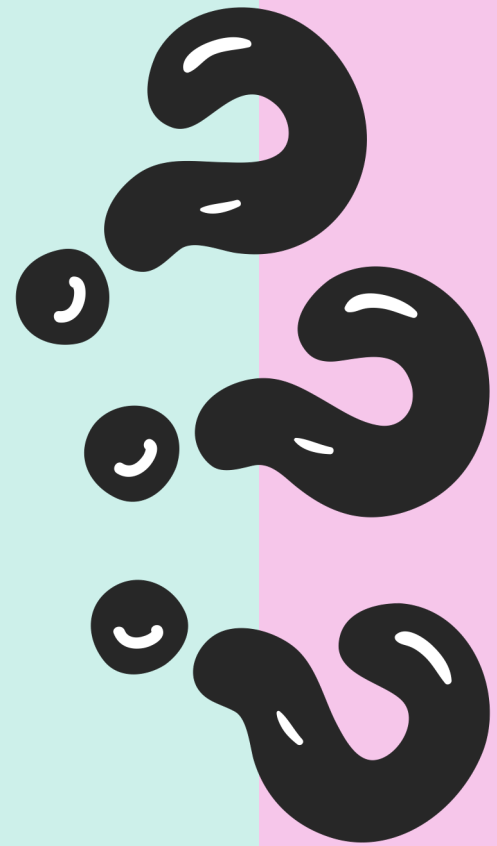
- Need and relevance ●
- Goals and solutions ●
- Outline of project components ●
- Sample assignment ●
- Wrap up ●
- Q&A ●





**WHAT IS YOUR BIGGEST  
FRUSTRATION ABOUT  
ASSIGNING PROJECTS TO  
YOUR STUDENTS?**

[PolleEv.com/CNAVARROPHD](https://PolleEv.com/CNAVARROPHD)



# What is your biggest frustration about assigning projects to your students?

Top





# BACKGROUND & CONTEXT

How I got to this point with  
project-based learning

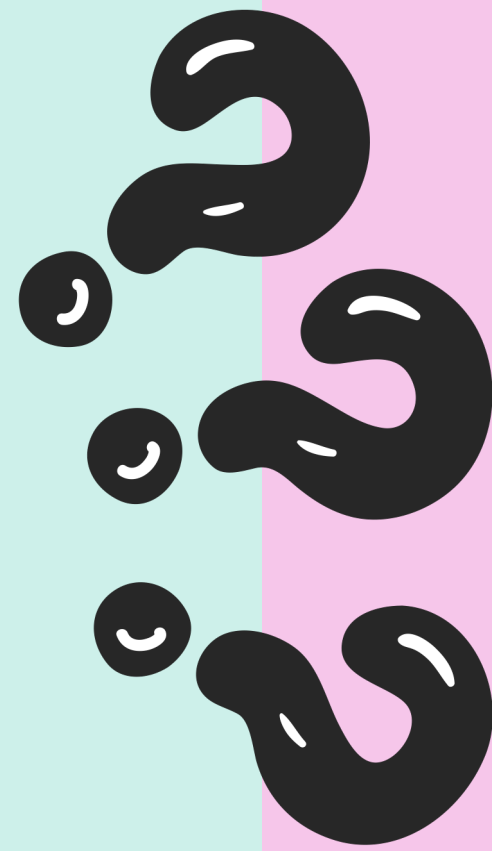
A short-story of good intentions

# WHAT IS PROJECT-BASED LEARNING

## APPROACH

Uses projects to explore real-world problems

Inquiry-based, open-ended, engaging, problem-solving, and contextualizing  
(Sam Houston State University, 2010)



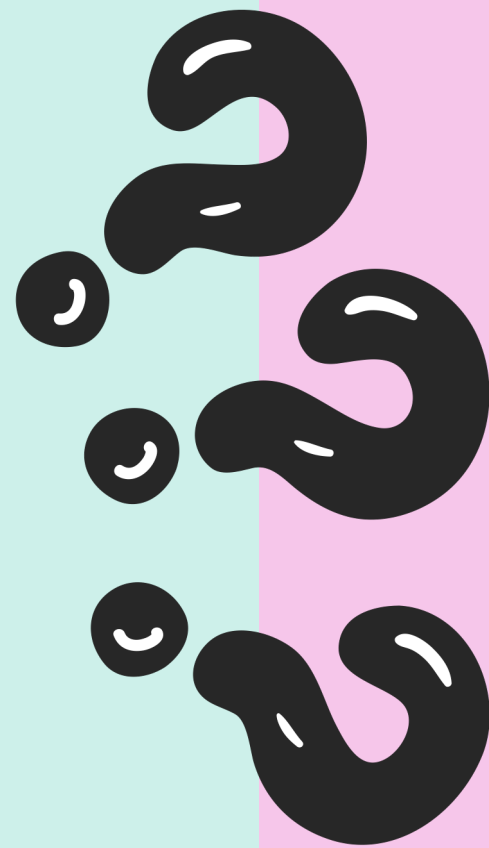


# WHAT IS PROJECT-BASED LEARNING

## RESEARCH

Improves learning in higher education  
(Bell, 2010; De Vivo, 2022)

Increases collaboration, problem-solving,  
communication, self-direction, creativity,  
time-management, and work-ethic  
(Wurdinger & Qureshi, 2015)





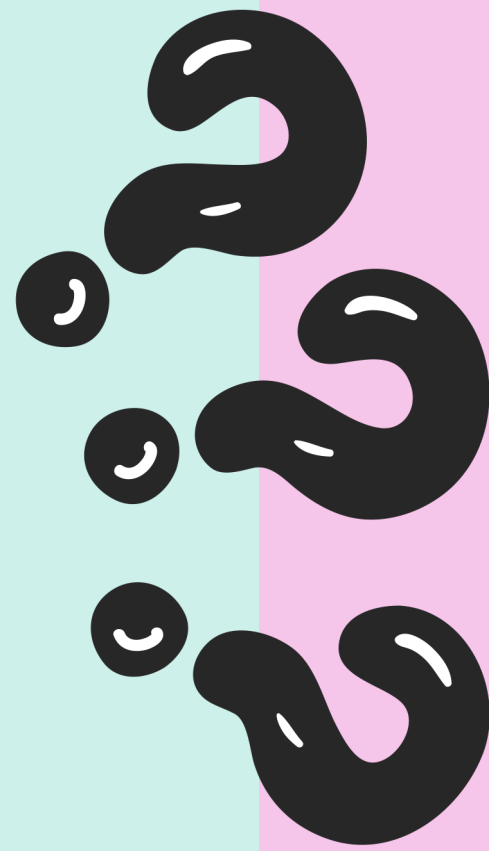
# WHAT IS PROJECT-BASED LEARNING

## STRATEGIES

Can be used any time in the classroom  
at any education level

Authentic; alternative to traditional  
assessments

(Thomas, 2000)





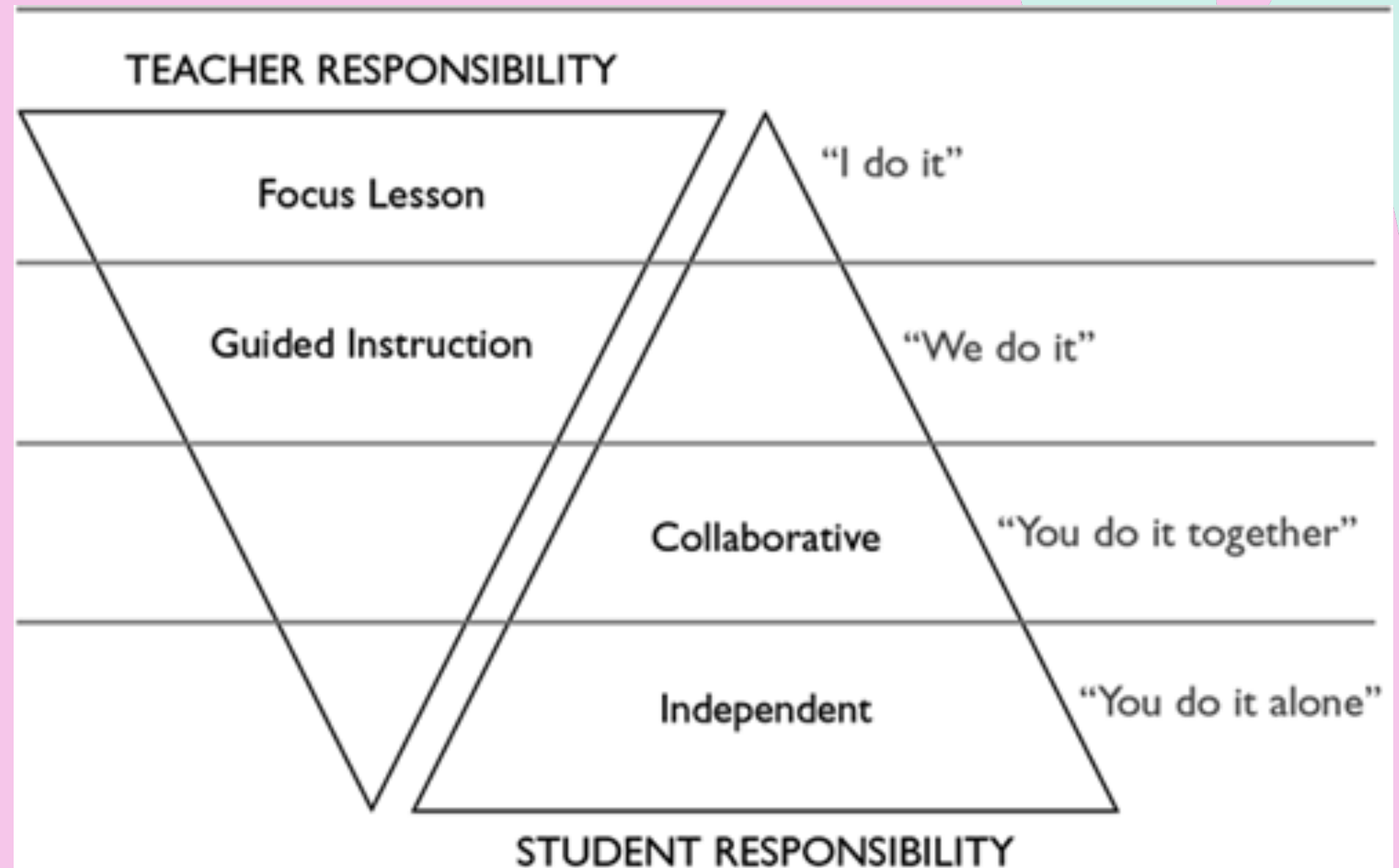
# INSTRUCTIONAL METHOD

## The Gradual Release of Responsibility Model

### GOAL

Devolve responsibility within the learning process from teacher to the eventual independent learner.

(Frey & Fisher, 2013)



(Wisconsin Department of Public Instruction, n.d.)

**Modeling and Instruction**

Teacher  
"I do it"



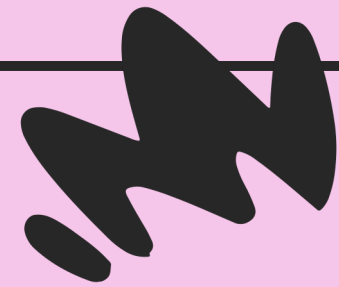
**Joint Responsibility**

Teacher + Learners  
"We do it"



**Independent Practice & Application**

Learners  
"You do it"



# THE INTENT

Give students an **authentic** approach to learning and while **synthesizing concepts** learned in class over an **extended period time**.

Culminates in a presentation product





# THE PROBLEM

Last minute efforts

Poor quality submissions

Lack of enthusiasm for topics

Misses the mark on the intent

# WHY DO STUDENTS DELAY RIGHT BEFORE DEADLINES?

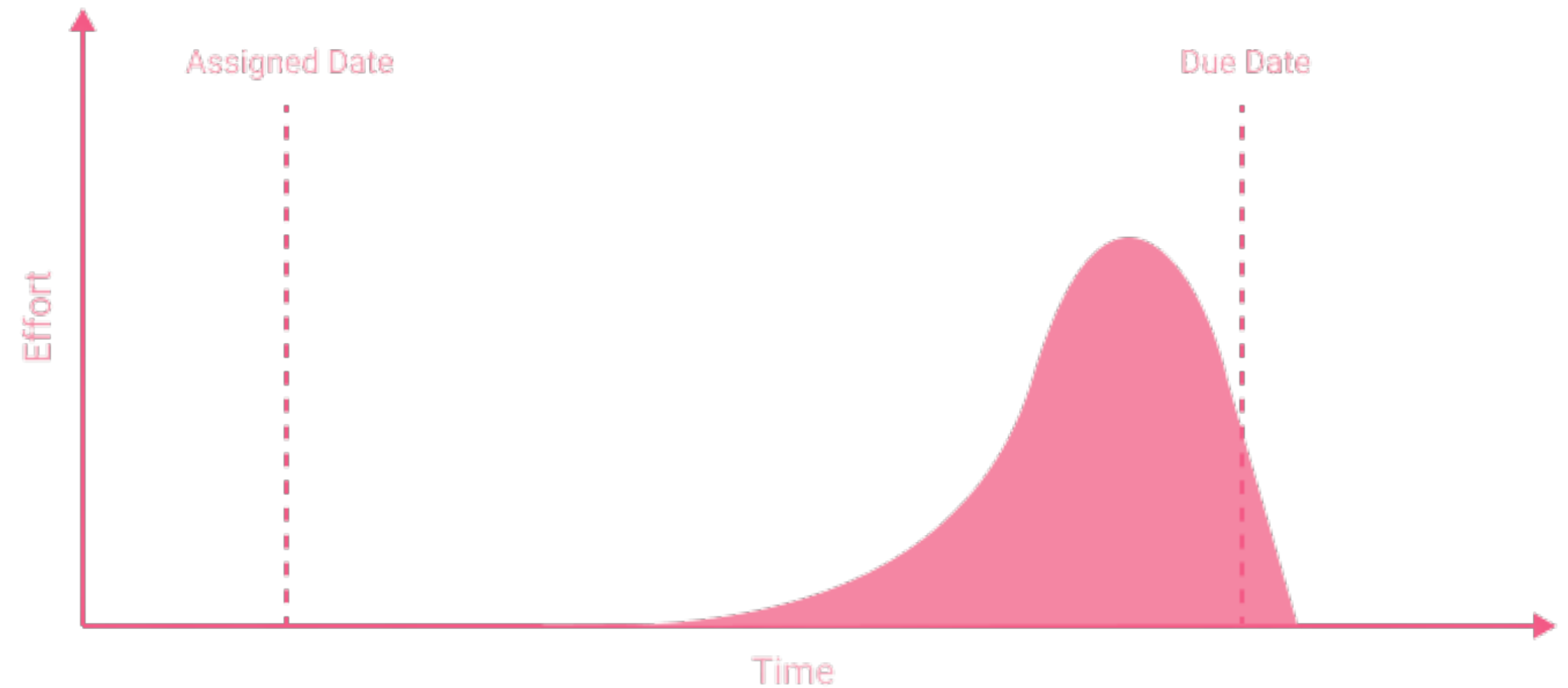
## Student Syndrome

More complex than laziness and  
poor time management

Procrastination "economics"

Dopamine rewards

(Cohen, 2016; Shatz, 2022)



Graphic presentation of Student Syndrome  
(Balyuk, 2020)



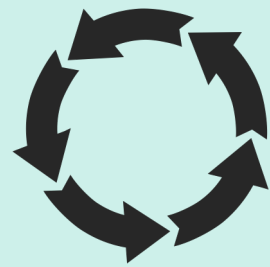


# **FRUSTRATION IS THE MOTHER OF INVENTION**

If it doesn't work the way you want it,  
then reinvent it



# GOAL



Continuously engaged  
in course



Demonstrate  
learning



Submit  
quality work





# SOLUTION

Student-Curated  
Portfolio Project

**THE BENEFITS OF STUDENT PORTFOLIO PROJECTS**

STUDENTS LEARN TO SELF-REFLECT

STUDENTS KNOW THEIR MASTERY LEVEL

STUDENTS CAN SEE THEIR GROWTH

STUDENTS LEARN MULTIMEDIA COMPOSITION

IT'S A CHANCE TO CELEBRATE LEARNING

STUDENTS IMPROVE IN THEIR METACOGNITION

IT INCREASES OWNERSHIP AND AGENCY IN THE ASSESSMENT PROCESS

STUDENTS SHARE THEIR WORK WITH A LARGER AUDIENCE

STUDENTS ARE ABLE TO DETERMINE NEXT STEPS

JOHN SPENCER

(Spencer, 2022)

# BENEFITS OF PORTFOLIO PROJECTS

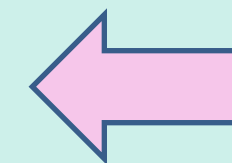




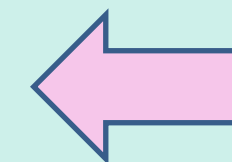
# THE ASSIGNMENT

Community Health Portfolio Project

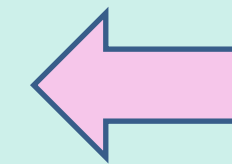
- Week 1, you will identify a topic that you want to focus on for the whole semester
- Each week, you will be assigned a prompt or activity that applies what we have learned in this week's chapter
- You will respond by creating one slide with the information requested
- At mid-term (Week 8), you will compile your slides into one deck and orally present to your peers in small groups.



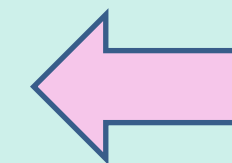
**Personal and meaningful**



**Relevant and timely**



**Attainable (small ask)**



**Engaging and intimate**



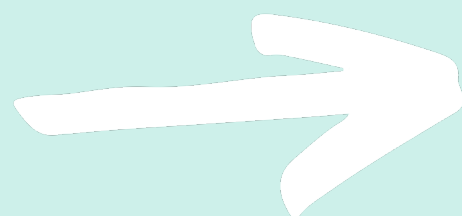
# THE ASSIGNMENT

Community Health Portfolio Project

**6 chapters in  
6 weeks**

**Focused Instruction**

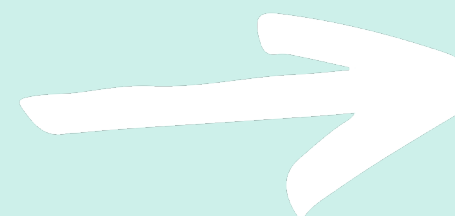
"I do it"



**6 activities on  
6 Mondays**

**Guided Instruction**

"We do it"



**6 portfolios in  
6 slides**

**Independent Application**

"You do it alone"

# PORTFOLIO PROJECT TIMELINE

## WEEKLY

Graded submissions  
Feedback given  
Opportunities to resubmit

## OVERALL

Focus on quality,  
not quantity

**Week 1** Portfolio 1: Hometown Health

**Week 2** Portfolio 2: Community Health Organizations

**Week 3** Portfolio 3: Community Organizing

**Week 4** Portfolio 4: Creating a Demographic Profile

**Week 5** Portfolio 5: Vital Statistics

**Week 6** Portfolio 6: Vaccination Coverage

**Week 7** -- Technical Assistance (TA) Day --

**Week 8** Oral Presentations in Small Groups





# **SAMPLE PROMPTS**

**and Student Work**



# PORTFOLIO 1

## Hometown Health

- **CHOOSE** a domestic (U.S.) geographic community that you would like to focus on for the entire semester. You are encouraged to choose your hometown community.
- Briefly **DESCRIBE** the community. Without researching other sources, tell us what YOU know about this community so far. Include pictures.
- **IDENTIFY** and **EXPLAIN** 2 factors that can affect the health of this community.

### HOMETOWN HEALTH

## ST. CROIX U.S. VIRGIN ISLANDS

St. Croix is the largest of a group of islands that make up the Virgin Islands, a U.S. territory.

*Population estimate: 87,000*



#### Diversity

Demographically and socioeconomically diverse people



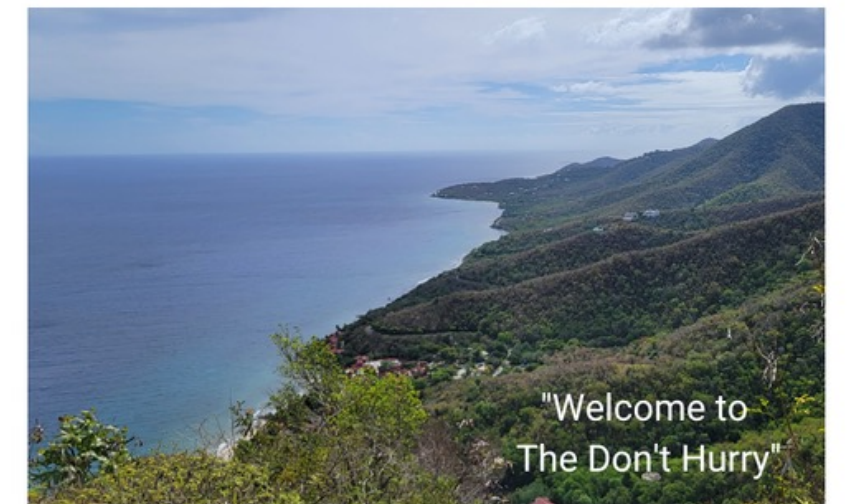
#### Community Size

**87,000**  
Population estimate  
(all USVI)



#### Geography

Hurricanes and other tropical disasters





## HOMETOWN HEALTH

# COCOA BEACH, FLORIDA

Cocoa Beach is a Florida city known for its beaches, surf breaks, and it's proximity to the Kennedy Space Station.



### Economy

Home to a military base: Patrick Air Force Base



### Environment

Well-constructed built environment



### Geography

Warm and humid temperatures; Hurricanes



"one of a kind"

## Hometown Health

# San Jose, California



- Major tech hub in the Northern California Bay Area, home to several leading tech companies such as Apple and Google
- Largest city in Northern California (population size ~1 mil)
- Characterized by its Asian influence, greenery, and cool climate.



### Socioeconomic Status

- Fairly affluent community due to high salaries and cost of living in CA



### Industrial Development

- Abundance of factories used for manufacturing and processing due to modernization



# San Francisco, California

San Francisco is a large cultural city containing scenic beauty, cultural varieties, and diverse communities.



### Diversity

Melting pot of cultures with people ranging from diverse backgrounds



### Community Size

**874,784**

Population estimate



### Geography

Summers are long and warm. Winters are short and cold.



# New York City

The "concrete jungle" of the United States. Located in the State of New York. Nickname: The Big Apple.

Population estimate: 8,804,190



### Community size

- Urban area
- ↑ demands for health
- Largest in State of New York



### Economy

- Affects: health and social services
  - Unemployment rate (2022): 6.1 %

+





## HOMETOWN HEALTH

### Pembroke Pines Florida

- Pembroke Pines is a city in southern Broward county, Florida, It has a population of 171,178 and is the forth most populous city
- Climate
  - Hurricanes and other tropical storms
- Social economic
  - Average income of 34,041 USD
- Crime
  - Total Crime in 2018 is 3,782



## HOMETOWN HEALTH PEMBROKE PINES, FLORIDA

- Pembroke Pines is a city in southern Broward county, Florida, It has a population of 171,178 and is the forth most populous city
  - Climate
    - Hurricanes and other tropical storms
  - Social economic
    - Average income of 34,041 USD
  - Crime
    - Total Crime in 2018 is 3,782







# PORTFOLIO 2

## Community Health Organizations

In Chapter 2, we discuss different types of agencies that contribute to the promotion, protection, and maintenance of health in a community.

- **IDENTIFY** 2 community-level health agencies : 1 governmental and 1 non-governmental
- Briefly **DESCRIBE** each agency's mission/vision and the population serve. Include logos or taglines of the organization.
- **EXPLAIN ONE SPECIFIC** health service/program that each organization offers to the community.



### GOVERNMENTAL

**USVI Department of Health (VIDOH)**  
Public health agency for all USVI

**Mission:** To reduce health risks, increase access to quality healthcare and enforce health standards.

**Program: The Virgin Island Infants and Toddlers Program (ITP)**

- Early intervention services for infants and toddlers who have disabilities/developmental delays.



American Heart Association®

**AUTHORIZED TRAINING CENTER**

### NON-GOVERNMENTAL

**University of the Virgin Islands Center for Excellence in Leadership & Learning (UVI CELL)**

Authorized training center by the American Heart Association (AHA)

**Mission:** Dedicated to fighting heart disease and stroke.

**Program: Lifesaving Skills Courses**

- Basic Life Support (BLS), Adult and Infant Cardiopulmonary Resuscitation (CPR), and Automated External Defibrillators (AED)





# PORTFOLIO 3

National Alliance on Mental Illness

# NAMI

## Greater Houston

- Programs: Family support groups, school presentations, Criminal Justice Program, and various NAMI programs



### Mission:

"to provide advocacy, education, support and public awareness so that all individuals and families affected by mental illness can build better lives."

### NAMI Peer-Peer Program

Individual & Community levels

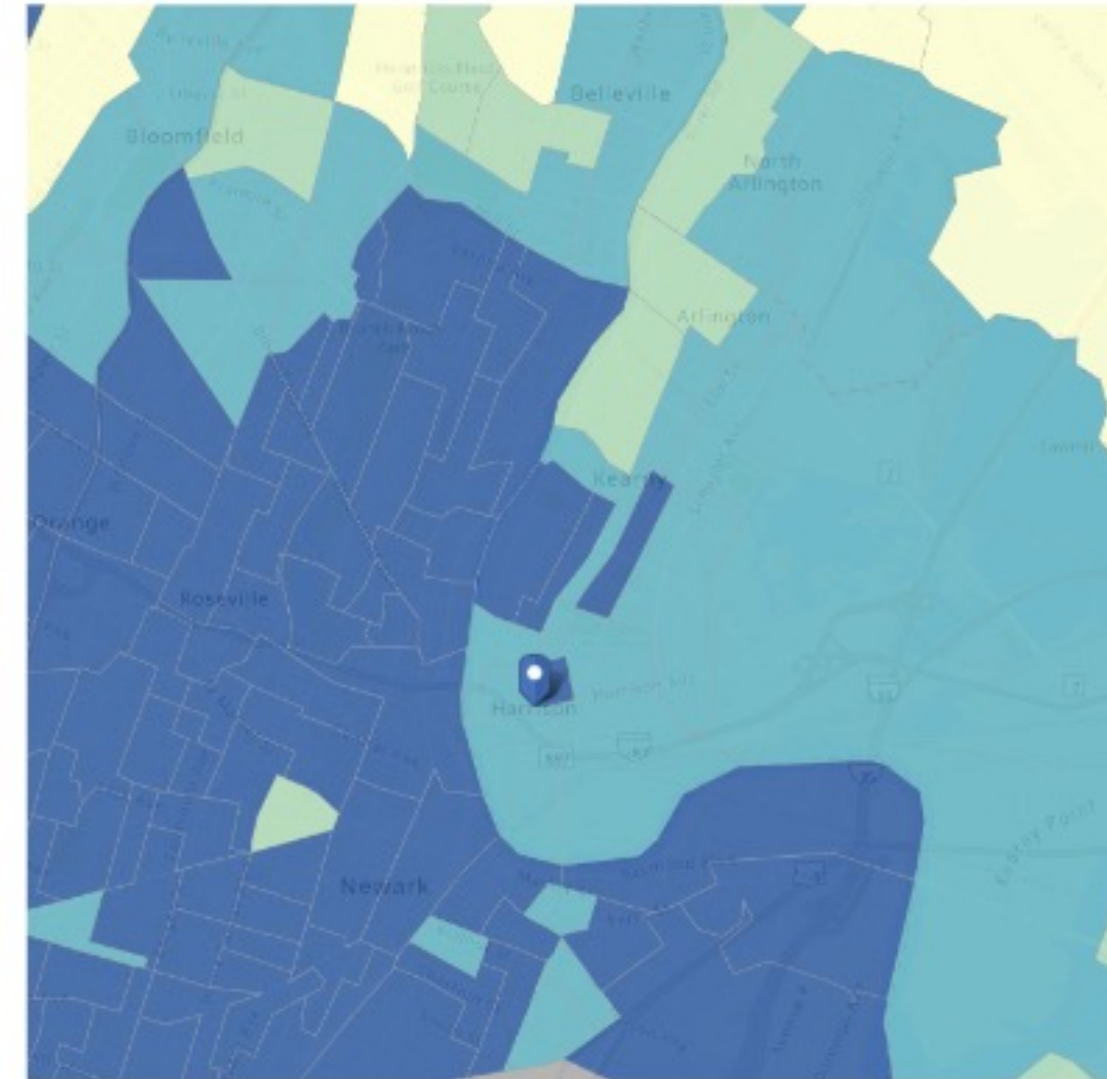
- course that share information about one's mental health condition
- provide and teach "strategies to maintain recovery in an uncritical and accepting environment"

(National Alliance on Mental Illness, n.d.)



## Harrison Demographic

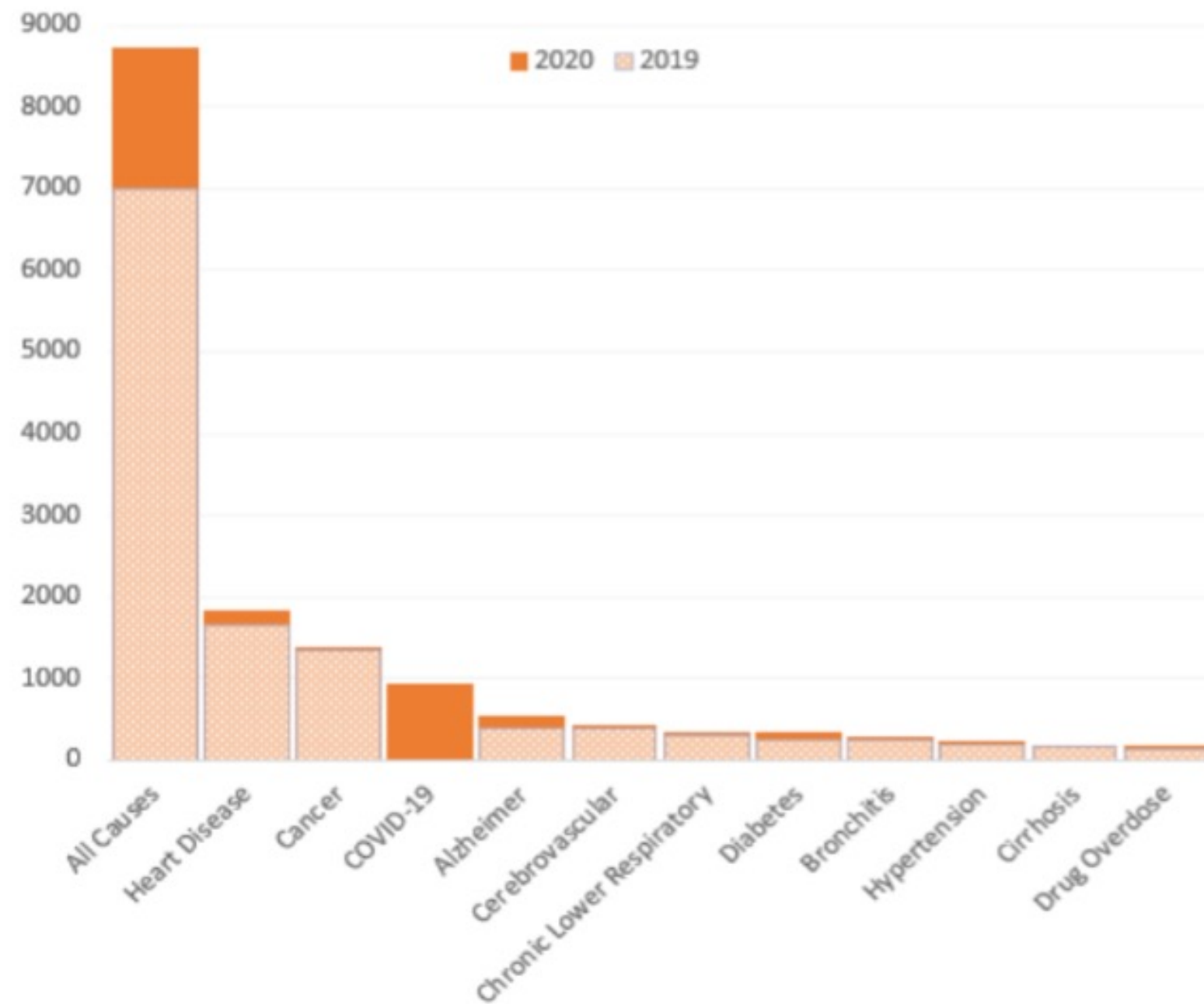
Harrison	Hudson County
<b>Race/Ethnicity</b>	
50.1% Hispanic/latino	42.5% Hispanic/latino
42.5% White alone	63.7% White alone
<b>Age &amp; Sex</b>	
49.1% Female persons	50% Female persons
20.5% Persons <18	20.4% Persons <18
9.3% Persons >65	12.6% Persons >65
<b>Population Characteristics</b>	
227 Veterans	10,892 veterans
55.9% Foreign born persons	43.6% Foreign born persons
<b>Health</b>	
5.1% Persons <65 with a disability	5.8% Persons <65 with a disability
16.4% Persons without health insurance <65	12% Persons without health insurance <65
<b>Income</b>	
Median household income \$66,699	Median household income \$75,062
<b>Poverty</b>	
15.6% Persons in poverty	13.1% persons in poverty



- Harrison has a SVI score of **0.7647** Which indicates a high level of vulnerability
- Lighter blue is shown in the communities around harrison indicating a moderate to high levels of vulnerability
- The lighter color the area the lower vulnerability level is  
(Census, 2021)  
(ATSDR, 2018)

## Vital Statistics

### Fresno County Department of Public Health 2019-2020 Leading Cause of Death Report



### Life Expectancy Disparity

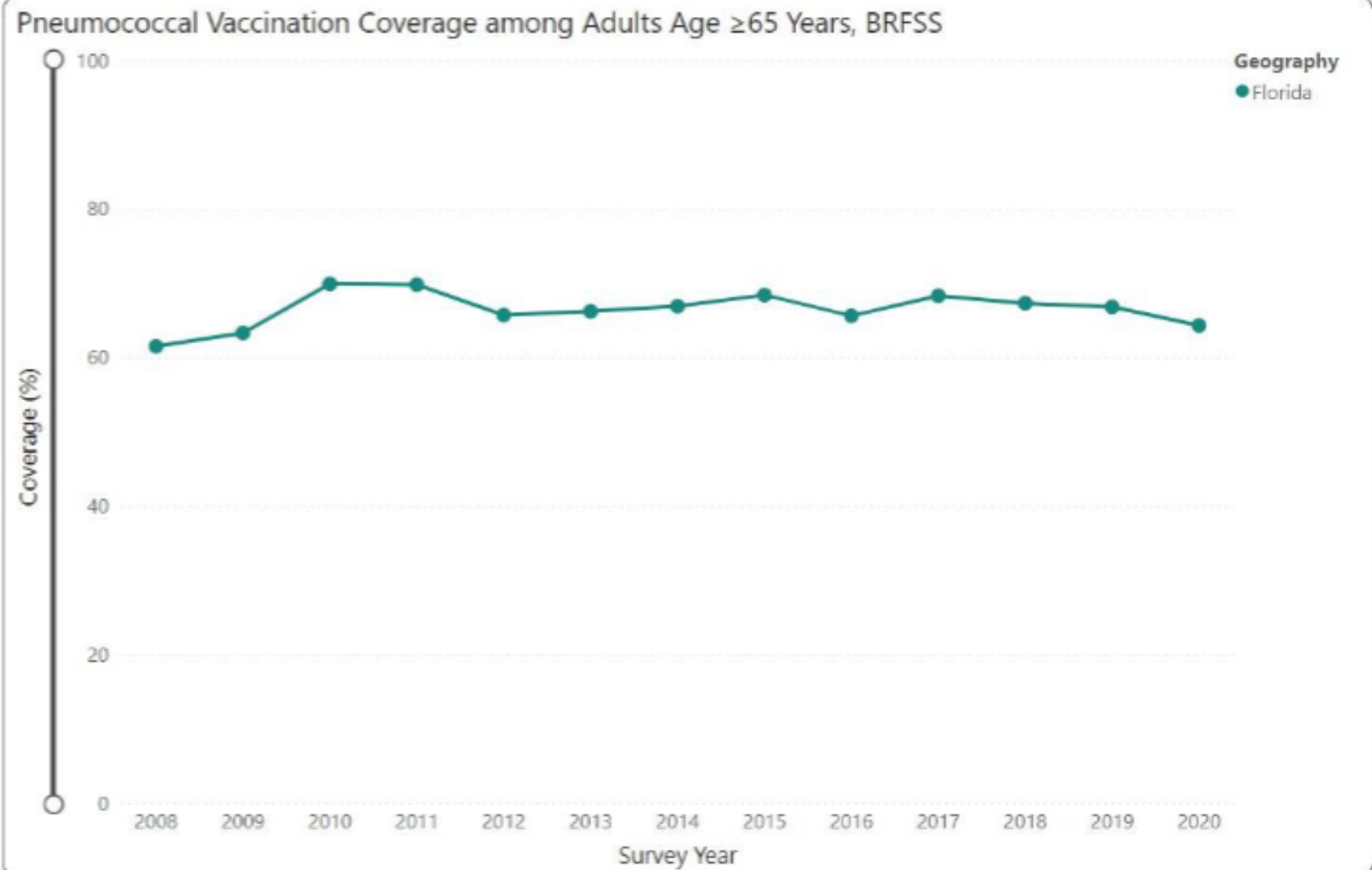
*Though slightly above the national average life expectancy, there is a disparity between Fresno County's life expectancy and the average life expectancy in California*





## Vaccination Coverage: Florida<sup>9</sup>

- Database: Floridian adults equal to or greater than 65 years old with pneumococcal vaccination coverage
- Trend Explanation: No significant change in coverage over the past 5 years



# NOW WHAT

## AT MIDTERM

Portfolios compiled into one product

Presented in small manageable groups of 5

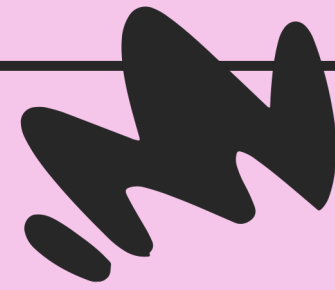
Peer reviews and self-reflection

Feedback shared from peers



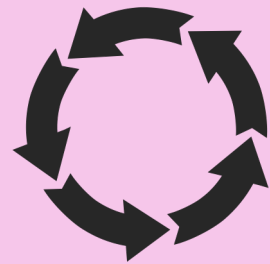
**Confidence in submitting "A"  
work for midterm project**





# SUMMARY

Goals addressed through multi-faceted portfolio project that engages learners meaningfully throughout semester



**Continuously engaged  
in course**

Weekly portfolio  
assignments

Personal interest



**Demonstrate  
learning**

Written and oral  
communication

Course concepts  
synthesized



**Submit  
quality work**

Opportunities for feedback  
and resubmission

Peer reviews

# FEEDBACK LOOP

What do the students say?



When students were asked:

**"Out of all the in-class exercises and homework assignments, which has been your favorite?"**

70% of students (15/21)  
chose the portfolio project



# FEEDBACK LOOP

What do the students say?



When students were asked:

**"What are the things you have enjoyed the most about this class so far?"**

"Portfolio project"

"Apply what you've learned to to your own community"

"Assignments don't feel like busy work. The purpose and association is clear"

"Helpful feedback on work"

"The ability to collect and analyze data from community databases. It's like an intro to research"

"I love that slides for the portfolio were due every week so that it forced me out of a habit of procrastination. It made my life a lot easier come time for midterm week since I wasn't scrambling to complete the project."



# THANK YOU

What questions do you have?

[cnavarro@nova.edu](mailto:cnavarro@nova.edu)  
[@cnavarrophd](https://twitter.com/cnavarrophd)





# REFERENCES

Balyuk, A. (14 April 2020). "Student Syndrome in Project Management: Real Constraint or Just Human Factor?" Retrieved from, <https://www.epicflow.com/blog/>

Bell, S. (2010). Project-based learning for the 21st century: Skills for the future. *Clearing House*, 83(2), 39–43. <https://doi.org/10.1080/00098650903505415>

Cohen, T. (30 Aug 2016). "Procrastination – The student syndrome." *Scientific Scribbles*. Retrieved from, <https://blogs.unimelb.edu.au/sciencecommunication/2016/08/30/procrastination-the-student-syndrome/>

De Vivo, K. (2022). A new research base for rigorous project-based learning. Retrieved from, <https://kappanonline.org/research-project-based-learning-de-vivo/>

Frey, N. & Fisher, D. (2013). Gradual Release of Responsibility Instructional Framework. *Formative Assessment and the Common Core Standards: English Language Arts/Literacy, Module 3*. Retrieved from, <https://pdo.ascd.org/>

Shatz, I. (2022). "Student Syndrome: Why People Delay Until Right Before Deadlines. "Solving Procrastination. Retrieved from, <https://solvingprocrastination.com/student-syndrome/>

Sam Houston State University. (2018). Project based learning in higher education. Retrieved from <http://www.shsu.edu/centers/project-based-learning/higher-education.html>

Spencer, J. (16 May 2022). Getting Started with Student Portfolio Projects. Retrieved from, <https://spencerauthor.com/student-portfolio-projects/>

Thomas, J. W. (2000). A review of research on project-based learning. San Rafael, CA: Autodesk Foundation. Retrieved from, <https://www.pblworks.org/>

Wurdinger, S., & Qureshi, M. (2015). Enhancing college students' life skills through project based learning. *Innovative Higher Education*, 40(3), 279–286. <https://doi.org/10.1007/s10755-014-9314-3>

Wisconsin Department of Public Instruction. (n.d.) Gradual Release of Responsibility (GRR) Instructional Framework . Retrieved from, <https://dpi.wi.gov/ela/instruction/framework>