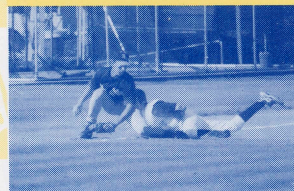
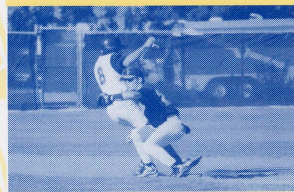
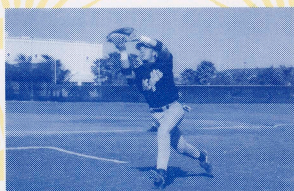


NOVA SOUTHEASTERN UNIVERSITY



# Baseball 1998-99

ATHLETICS



# Welcome to Nova Southeastern University...

Nova Southeastern University is South Florida's multidisciplinary center devoted to providing educational programs of distinction from prekindergarten through the doctoral level. From its beginning in 1964, NSU has distinguished itself through innovation, offering traditional and nontraditional programs and promoting research into social and human problems of immediate and long-range concern.

The University includes academic centers in allied health, business and entrepreneurship, computer and information sciences, dental medicine, education, family education, law, medical sciences, oceanography, optometry, osteopathic medicine, pharmacy, psychology, social and systemic studies, and undergraduate studies.

The Main Campus is located on 232 acres in suburban Fort Lauderdale and features the Farquhar Center for Undergraduate Studies, Health Professions Division, Center for Psychological Studies, Shepard Broad Law Center, and University School. The East Campus, near downtown Fort Lauderdale, houses our School of Business and Entrepreneurship, School of Computer and Information Sciences, and the School of Social and Systemic Studies. The Oceanographic Center is located on 10 acres adjacent to Port Everglades. And the Fischler Center for the Advancement of Education is located at the North Miami Beach Campus. NSU also offers classes at the Coral Springs Campus, in locations across Florida, and in 21 states and several foreign countries.

Operating on an annual budget of approximately \$187 million, NSU is the largest private, independent institution of higher education in Florida, based on Fall Term enrollment, and has produced more than 50,000 alumni.

## Notice of Nondiscrimination

Nova Southeastern University admits students of any race, color, sex, age, nondisqualifying disability, religion or creed, or national or ethnic origin to all the rights, privileges, programs, and activities generally accorded or made available to students at the school, and does not discriminate in administration of its educational policies, admissions

## NSU general information...

**Location:** 3301 College Avenue, Fort Lauderdale, FL 33314

**Founded:** 1964

**Undergraduate enrollment:** 2,771

**Nickname:** Knights

**School Colors:** Navy blue, white, gray, gold trim

**Home field:** A.D. Griffin Complex (300)

**Affiliation:** National Association of Intercollegiate Athletics

**Conference:** Florida Sun

**President:** Ray Ferrero, JR

**Director of Athletics:** Corey Johnson

**Assistant Athletic Director:** Patrick Feely

**Assistant Athletic Director:**

**Sports Information Director:** Mike Laderman

**Athletic Trainers:** Brian Anderson, Theresa Belesky

**Faculty Athletic Rep:** Dr. Mark Cavanaugh

**Athletic Department phone:** (954) 262-8250

**Athletic Department fax:** (954) 262-3926

policies, scholarship and loan programs, and athletic and other school-administered programs.

Nova Southeastern University is accredited by the Commission on Colleges of the Southern Association of Colleges and Schools (1866 Southern Lane, Decatur, Georgia 30033-4097; Telephone number 404-679-4501) to award bachelor's, master's, educational specialist, and doctoral degrees.

## Welcome to Broward County...and welcome to Fort Lauderdale...

*Money Magazine* voted Fort Lauderdale the best big place to live in America in 1996, which did not surprise the 1.3 million inhabitants of the city and its neighboring municipalities who comprise Greater Fort Lauderdale/Broward County or the 6.2 million non-residents who came from all over North and South America, Europe and Asia last year for fun or business. The fact is all of Greater Fort Lauderdale is a terrific place to visit because it is a great place to live.

So what do the residents and loyal visitors of

-CONTINUED ON NEXT PAGE-

# About Fort Lauderdale...and Broward County...

-CONTINUED FROM PREVIOUS PAGE-

Florida's fastest growing, most diverse and dynamic vacation and business travel destination know that the rest of the world should find out?

For starters, there are 23 miles of wide sandy beaches stretching enticingly along calm, azure Atlantic waters—from Palm Beach in the north to Miami in the south. More than 300 miles of navigable inland waterways wind through palatial estates, citrus groves and the unique and exotic Everglades—beckoning boats of all sizes and shapes. It is the Intracoastal Waterway and the waterfront homes which dot it that have earned Greater Fort Lauderdale its reputation as the “Venice of America” and, with more than 42,000 registered boats, the label “yachting capital of the world.” Then there are the cultural attractions, museums, sports, sailing and Scuba, dining, entertainment, shopping, natural wonders, festivals and celebrations, friendly folk, cruise ships, water taxis, horse-drawn carriages, butterflies, alligators...

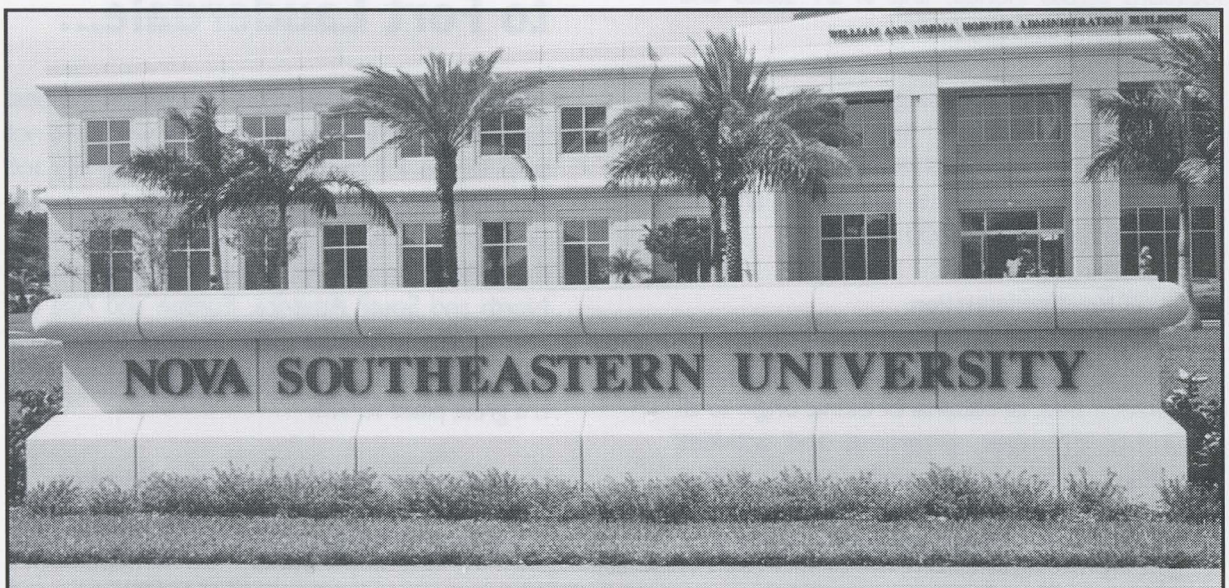
This is Greater Fort Lauderdale/Broward County: An area covering 1,197 square miles—two-thirds of which lie in the Everglades, also known as the “river of grass”—of diverse attractions and activities on and off the beach. It's no wonder that sun-seekers from all over the world come here to play, relax, and, sometimes, even work. It's also no wonder that Broward County is one of the fastest growing residential areas in the country.

Part of the reason is accessibility. Greater Fort

Lauderdale is easy to reach by air, train or interstate highway. The newly expanded *Fort Lauderdale/Hollywood International Airport* is one of the most efficient in the world, served by more than 40 carriers from most air-departure points across the U.S. and Canada. With three airports to select from in South Florida, the Fort Lauderdale/Hollywood International facility is fast becoming the number one choice with visitors who want to avoid overcrowding, long lines, confusion and miles of corridors. The airport's location makes it easy to land, collect luggage, rent a car and be at the beach, board a cruise ship or make a meeting at the Convention Center in minutes after arrival.

When it comes time for athletics, Greater Fort Lauderdale comes alive as “sports central” for the Southeast. This is one of only four areas in the nation to serve as home to pro football, baseball, basketball, hockey and soccer franchises. Broward County is also home to baseball spring training of the Baltimore Orioles, Dolphins' football training here at Nova Southeastern University, and more. In fact, the National Hockey League's Florida Panthers begin play this season just 10 minutes away at the National Car Rental Center, while Major League Soccer's Miami Fusion plays 15 minutes away at Lockhart Stadium.

For more information on Greater Fort Lauderdale, contact the Greater Fort Lauderdale Convention and Visitors Bureau, 1850 Eller Drive, Suite 303, Ft. Lauderdale, FL 33316, or phone 800-22-SUNNY, ext. 711 (in the U.S. and Canada).



# Message from the President...

*Nova Southeastern University is Florida's largest independent university based on enrollment and one of the top-twenty independent institutions in the United States. As President of NSU, I invite you to become an ambassador of this remarkable educational showcase that is 34 years young.*

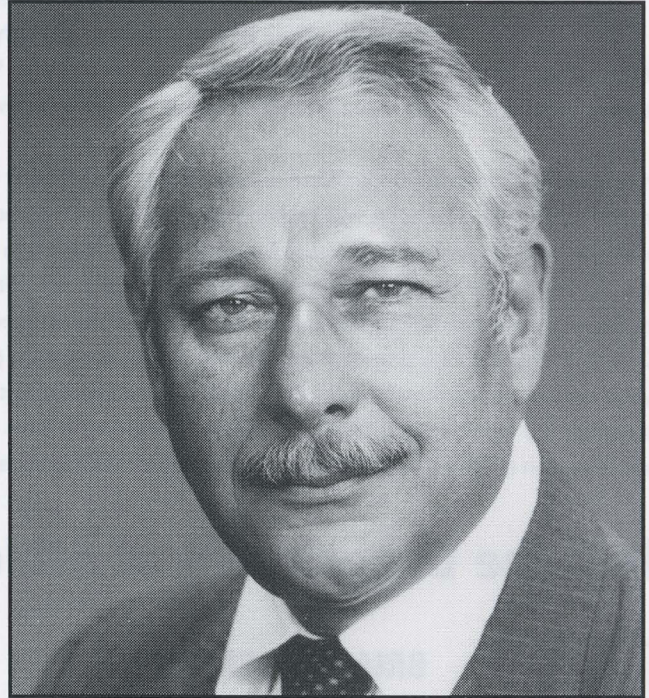
*In 1967, NSU served an entire student body of 17 from one building. Today, we have over 16,000 students enrolled in 15 academic centers, with programs offered in 22 states and six foreign countries. The university boasts over 55,000 alumni in 50 foreign countries. Over 7,000 students attend classes on our 232-acre Davie campus.*

*The university's sustained growth is due in large part to its exploration of alternative strategies in educating professionals, and its commitment to excellence in academics, clinical training, community service and well-rounded opportunities for all students. Athletics is most important in providing the all-important component to highlight the educational experience.*

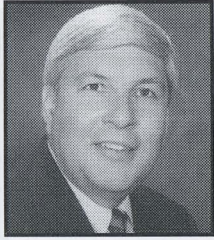
*As you continue your studies at Nova Southeastern University, you grow as a member of a select group of educators and practitioners in your field. You will move forward in leadership roles and find innovative avenues to advance your communities. The essence of NSU is collaboration at all levels and with diverse partners.*

*We look forward to a lifelong partnership with you, our student. The entire NSU community is dedicated to providing service and academic excellence to you as you continue on the road to graduation and your leadership in the new millennium.*

*Ray Ferrero, Jr.  
President*



## Meet the Athletics' administrative staff...



### **COREY JOHNSON** **Director of Athletics**

Now entering his fourth season with the Nova Southeastern University Department of Athletics, Corey Johnson has been a vital force on the South Florida sports scene. The Plantation resident has played key roles with the Broward Economic Development Council, the Orange Bowl Committee, and the South Florida Olympic Village, just to name a few. But it has been at Nova Southeastern University where Johnson has been doing the most good, leading the Knights' athletic program to consecutive Florida Sun Conference All-Sports Trophies in 1995-96 and 1996-97. He is also the driving force behind NSU's quest for a new fieldhouse, which is expected to host not just NSU's teams and offices, but also numerous local tournaments.

Johnson had been in South Florida before arriving at NSU in 1995, that being an associate athletic director at the University of Miami from 1983-87. There, he was responsible for NCAA compliance and eligibility, was special projects and tournament coordinator, and was responsible for coordinating the return of Division I basketball. His supervision included 12 non-revenue sports, student-athlete housing, scholarships and financial aid. He was also there to see the university capture national championships in football, baseball and women's golf. In 1987 he accepted a position with California State University Long Beach as Director of Athletics, Sports and Intramurals. And it was there that he proved his worth, handling a department comprised of 21 varsity and 16 club sports with more than 9,000 intramural participants (the campus had an enrollment of 34,000 students). That position led to his hiring as Director of Athletics at Colorado State University in 1991, where he was responsible for the overall operation of CSU's 16 varsity sports at a campus of 22,000 students.

## Meet the Department of Athletics' support staff...



### **BRIAN ANDERSON** **Athletic Trainer**

A relative newcomer to the Knights, joining the staff in October, 1997... Received his bachelor's degree in human performance and recreation from the University of Southern Mississippi, where he staffed intercollegiate football, baseball, basketball, tennis, golf, cross country and track and field... Certifications include CPE and First Aid, NATA-BOC Certification. Anderson is 25 and resides in Miami.



### **THERESA BELESKY** **Athletic Trainer**

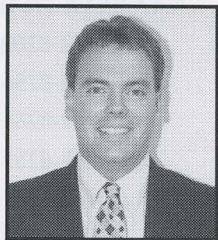
Joined the Knights' staff in August, 1996... Earned her bachelor's degree from Rowan University, New Jersey, in health and physical education, while receiving her master's degree from Edinboro University of Pennsylvania in rehabilitation counseling... Belesky is 27 and resides in Hollywood.



### **SHANNON CAIN** **Assistant Athletic Director/Senior Women's Administrator**

No stranger to Nova Southeastern University, Shannon Cain was named the Athletic Department's first-ever women's athletic administrator effective January 1, 1999. She most recently worked as the University's Assistant Director of Student Life for Campus Sports and Recreation, coming to NSU from Georgia Southern University, where she was Graduate Assistant for the Department of Health and Kinesiology, earning a master's in Sports Management. She received her bachelor's from Florida State University in Physical Education. Her duties will include: overseeing the department's compliance with NAIA and NCAA rules and regulations; eligibility; and act as liaison to all six women's sports.

## NSU's support staff, cont...

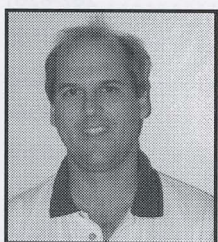


### **PATRICK FEELY**

#### **Assistant Athletic Director/Business Manager**

Named Assistant Athletic Director just this past summer, Patrick Feely has been a member of the Knights' athletic department since 1995, when he came aboard as an intern. He quickly gained a position as Director of Operations, before moving on to Business Manager duties—a position he still holds while assuming the role as Corey Johnson's right-hand man. Feely, 30, is responsible for the athletic department's budget, team travel arrangements and all business operations. He earned his bachelor's from Rochester Institute of Technology in Hospitality Management, and his master's from

Kent State University in Sports Administration. Feely and his wife, Chris, reside in Plantation.



### **MIKE GOODRICH**

#### **Director of Operations**

A relative newcomer to the Knights, joining the staff in October, 1998... Named the Knights' women's soccer coach in December, 1998... Coached boys' soccer at Cardinal Gibbons High from 1995-98... Co-founded and established Athletic Management Group, Inc., an athletic and event management company dedicated to the creation, development and enhancement of recreational and sporting events... Was Recreation Programmer for City of Pompano Beach from 1989-95, coordinating numerous events and programs such as the Cheetos Challenge, National Boys Football Super Bowl, Triple Crown Softball Championships, and various camps and clinics. He also developed marketing

strategies for numerous events (such as the Ford Credit Kreul Classic), and worked in both public and community relations... Goodrich, 35, resides in Pompano Beach with his wife, Joan... They have two children, Regina (6) and Patrick (2).



### **MIKE LADERMAN**

#### **Sports Information Director**

Entering his fourth year at Nova Southeastern University... Named the Florida Sun Conference's and NAIA Southeast Region's Male Athletics Administrator of the Year for 1997-98... Is also the Florida Sun Conference Sports Information Director... Captured seventh place in the nation amongst NAIA schools for his 1997 men's/women's soccer team program in the "multi-sport brochure" category... Joined the Knights after a nine-year career as a local sports writer with the *Community News*, *Sun-Sentinel*, *Miami Herald*, and the now-defunct *Coral Springs/Quad City News*, *Hollywood Sun-Tattler*, and *South Florida SportsNews*... Captured nine Florida Press Association Awards in six years of eligibility... Was the

Assistant Sports Information Director for the South Florida Olympic Village in 1996, as well as the Director of Media Relations for the 1996 CARQUEST Bowl... Laderman, 30, resides in Plantation with his wife, Kim.



### **GALE LANG, ED. D.**

#### **Academic Coordinator**

A member of the NSU Department of Athletics since the 1996-97 seasons... Monitors academic performances of all athletes, while serving as liaison to coaches, parents and the Athletic Academic Advisor... Earned bachelor's in education Magna Cum Laude in 1983, master's in 1987 from the University of Miami... Graduated in 1975 from City College of New York with a B.S. in Education... Resides in Hollywood.



### **BEVERLEY WELKER**

#### **Assistant to the Director**

Beverly Welker came on board the Nova Southeastern University staff in January, 1997. She is responsible for managing the Department of Athletics and directly assisting the director of athletics Corey Johnson. She enjoys golfing and square dancing. Welker and her husband, Daniel, reside in Hollywood.

# Getting in touch with the Knights...

ALL CALLS .....	AREA CODE (954)	
Brian Anderson .....	Trainer .....	262-8260
Theresa Belesky .....	Trainer .....	262-8256
Shannon Cain .....	Assistant Athletic Director/Senior Women's Administrator .....	262-8266
Joe DePalo .....	Head Men's Soccer Coach .....	262-8255
Patrick Feely .....	Assistant Athletic Director/Business Manager .....	262-8267
Mike Goodrich .....	Director of Operations .....	262-8270
Robyn Handler .....	Head Softball Coach .....	262-8258
Sonny Hansley .....	Head Baseball Coach .....	262-8259
Corey Johnson .....	Director of Athletics .....	262-8252
Mike Laderman .....	Sports Information Director .....	262-8261
Gale Lang .....	Academic Coordinator .....	262-1599
Tony McAndrews .....	Head Men's Basketball Coach .....	262-8263
Charyl Morgan .....	Head Women's Volleyball Coach .....	262-8264
Dustin Phillips .....	Head Golf Coach .....	262-8268
Marilyn Rule .....	Head Women's Basketball Coach .....	262-8078
Ken Ward .....	Head Cross Country Coach .....	262-8250
Beverly Welker .....	Assistant to the Director .....	262-8252



THE 1997-98 DEPARTMENT OF ATHLETICS' STAFF (BOTTOM ROW, L-R): Women's volleyball coach Charyl Morgan, softball coach Robyn Handler, trainer Theresa Belesky, women's soccer coach Rebecca Utter, director of athletics Corey Johnson, assistant to the athletic director Beverly Welker, men's soccer coach Frankie Delgado, assistant athletic director/business manager Patrick Feely. (TOP ROW L-R): Sports information director Mike Laderman, assistant volleyball coach Max Resomardono, assistant baseball coach Kevin Peyton, trainer Brian Anderson, men's golf coach Dustin Phillips, assistant men's soccer coach Rich Barnard, assistant baseball coach Rob Perez, baseball coach Sonny Hansley, men's basketball coach Tony McAndrews, assistant baseball coach Tom Hysell.



**BASEBALL 1998-99...**



Senior pitcher Joe Giummule

# BASEBALL 1998-99...

## KNIGHTS MEN'S BASEBALL

First year of men's baseball: 1987-88

All-time record: 385-216-3

Championships/years won: 3 (2 Florida Sun Conference regular season championship -- 1993-94, 1996-97; 1 FSC Tournament championship--1994-95)

1997-98 record; 26-25

FSC record/finish: 10-14 (7<sup>th</sup> place)

Last year's playoff record: N/A

Starters returning: 6

Starters lost: 3

## COACHING STAFF

Head coach: Sonny Hansley

Alma mater/year: American International College/1969

Record at NSU: 385-216-3 in 11 seasons

Career record: same

Office phone: (954) 262-8259

Best time to reach Coach Hansley: 9 a.m.-1 p.m.

Assistant coach: Pete Colabella (1<sup>st</sup> season), Claude Love (1<sup>st</sup> season)

## RETURNING POSITION PLAYERS 1997-98 STATISTICS

Tom Ayala (JR, OF): .359 BA, 48 GP, 47 GS, 47 R, 55 H, 7 2B, 16 RBI, .405 SLG%, .482 OBP%

Jim Birch (JR, IF): 37 GP, 16 GS, .200 BA, .297 OBP%, .895 FLD%

Charles Cerrato (JR, 2B): 38 GP, 23 GS, .323 BA, .346 OBP%, .921 FLD%

Tommy Molina (SR, IF): .326 BA, 46 GP, 42 GS, 36 R, 10 2B, 3 HR, 19 RBI

Ben Prill (SR, C): 48 GP, 48 GS, .308 BA, .394 OBP%, .985 FLD%

Charlie Vaughn (JR, LF): 49 GP, 44 GS, .346 BA, .474 OBP%, .921 FLD%

Chris Villano (SO, OF): .297 BA, 51 GP, 50 GS, 32 R, 51 H, 12 2B, 1 3B, 3 HR, 39 RBI

## RETURNING PITCHERS 1997-98 STATISTICS

Jim Birch (JR, RHP): 2.93 ERA, 4-0, 32 SO

Joe Giummule (SR, RHP): 3-3, 6.83 ERA, 27 SO, 21 BB  
Todd Gittleman (SO, RHP): 5-5, 8.04 ERA, 53 SO, 64 BB  
Blake Paynter (JR, RHP): 2-3, 6.61 ERA, 40 SO, 41 BB

## NEWCOMERS/POSITION PLAYERS

Luke Albert (Hollywood, FL, Broward CC)

Rolando Bello (Miami, FL, Pace High)

Patrick Nugent (Ormond Beach, FL, Father Lopez High)

Ryan Pretz (Popular Bluff, MO, Three Rivers CC)

Drew Starke (Kingwood, TX, Kingwood High)

Richard Garcia (Miami, FL, Coral Park High)

## NEWCOMERS/PITCHERS

Seth Benedon (Coral Springs, FL, Rutgers)

Anthony DiPiero (Youngstown, OH, Cardinal Mooney High)

Jona Elisco (Ft. Lauderdale, FL, Westminster Academy)

James Engle III (Sunrise, FL, Broward CC)

Edwin Espinet (Orlando, FL, St. Johns River CC)

Kevin Scharfman (Pembroke Pines, FL, Cooper City High)

Jimmy Sessions (Pembroke Pines, FL, St. Thomas Aquinas)

Stephen Thomas (Plantation, FL, Valencia CC)

## KEY LOSSES

Raul DeCastro, 1B: 50 GP, 49 GS, .358 BA, .974 FLD%

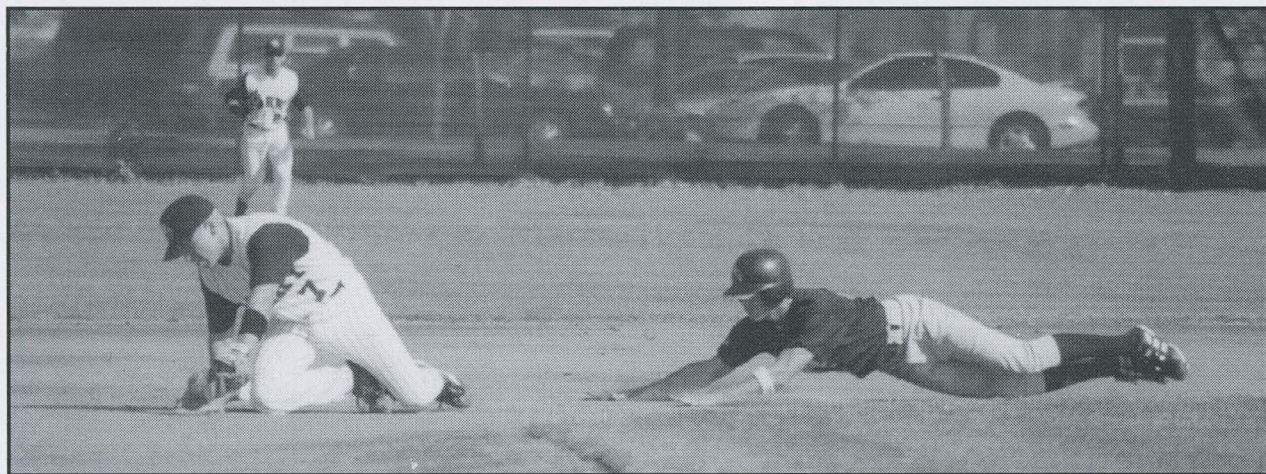
Mark Groeneveld, RF: 48 GP, 43 GS, .237 BA, .946 FLD%

Matt Bennett, P: 5-4, 4.95 ERA, 40 SO

Felipe Suarez, P: 7-5, 2.72 ERA, 126 SO

## DIRECTIONS TO THE NSU BASEBALL COMPLEX

(From the north or south) Take I-95 or the Florida turnpike to I-595 west. Exit at University Drive, turn left(south). Go approximately 1 1/2 miles to SW 30 St., turn left(east). Just past Miami Dolphins Training Facility is 75<sup>th</sup> Ave.; turn right(south). Baseball field is 2 speed bumps down on right(west) side. If small gravel lot is full, park in either 5-story parking garage just past right field(just south of the Dolphin's field) or in parking lot on west side of 75<sup>th</sup> Ave., 2 speed bumps past baseball field. Team entrance is north gate, alongside right field line. Spectators entrance is north gate only for weekday games, north and east gate for select weekend games.



# BASEBALL 1998-99...

## Knights' roster...

### POSITION PLAYERS

NO	NAME	B/T	POS	HT	WT	CL	HOMETOWN/PREVIOUS SCHOOLS
1	Ryan Pretz	R/R	C	5-8	200	JR	Poplar Bluff, MO/Three Rivers CC/Poplar Bluff High
3	David Mamone	R/R	OF	6-1	195	JR	Wellington, FL/Upper Iowa
4	Chris Villano	R/R	OF	5-11	175	SO	Davie, FL/Western High
5	Tommy Molina	R/R	2B	5-8	175	SR	Miami, FL/Miami Dade CC/Brito
7	Norberto Lopez	R/R	C	5-8	180	SR	Hialeah, FL/Broward Community College/Pace High
8	Bryan Needle	R/R	SS	6-2	195	SO	Sunrise, FL/Plantation High
9	Charles Cerrato	R/R	OF	5-10	195	JR	Pembroke Pines, FL/Cooper City High
10	Charles Vaughn	R/R	3B/OF	6-1	195	JR	Miami, FL/American Senior High
11	Tommy Ayala	L/L	OF	5-11	175	SO	North Lauderdale, FL/Coconut Creek High
14	Angel Nieves	R/R	OF	6-2	202	SO	Davie, FL/Western High
15	Matt Cleveland	R/R	2B	5-10	175	SO	Ft. Lauderdale, FL/Seton Hall/Ft. Lauderdale Christian
20	Luke Albert	B/R	1B/C	6-2	200	SO	Hollywood, FL/Broward CC/Chaminade-Madonna
21	Patrick Nugent	R/R	SS	5-10	155	FR	Ormond Beach, FL/Father Lopez High
23	Michael Torres	R/R	C	5-10	185	FR	Ft. Lauderdale, FL/Hollywood Hills High
26	Ben Prill	R/R	C	6-1	205	SR	Decatur, IN/Bellmont High
27	Rolando Bello	L/R	3B	6-0	180	FR	Miami, FL/Pace High
31	Richard Garcia	R/R	OF/P	6-2	185	FR	Miami, FL/Coral Park High
34	Drew Starke	R/R	C	6-1	180	FR	Kingwood, TX/Kingwood High

### PITCHERS

NO	NAME	B/T	HT	WT	CL	HOMETOWN/PREVIOUS SCHOOLS
2	Jona Elisco	L/L	5-11	175	FR	Ft. Lauderdale, FL/Westminster Academy
12	James Birch	R/R	6-0	190	JR	Davie, FL/Florida Bible Christian School
16	Todd Gittleman	R/R	6-1	170	SO	Hollywood, FL/Hollywood Hills High
17	Joe Giummule	R/R	5-10	185	SR	Margate, FL/Bethany College/Coconut Creek High
18	Stephen Thomas	R/R	6-0	200	SO	Plantation, FL/Valencia CC/Plantation High
24	Blake Paynter	R/R	6-4	215	JR	Cooper City, FL/Cooper City High
30	James Engle III	L/L	5-10	180	JR	Sunrise, FL/Broward CC/St. Thomas Aquinas High
32	Edwin Espinet	R/R	6-0	165	JR	Orlando, FL/St. Johns River CC/Boone High
35	Jimmy Sessions	R/R	5-10	160	FR	Pembroke Pines, FL/St. Thomas Aquinas
36	Anthony DiPiero	R/R	6-1	175	FR	Youngstown, OH/Cardinal Mooney High
37	Seth Benedon	R/R	6-1	187	FR	Coral Springs, FL/Rutgers/Douglas High
39	Kevin Scharfman	R/R	6-5	180	FR	Pembroke Pines, FL/Cooper City High

### COACHING STAFF

6	Sonny Hansley, Head Coach (12 <sup>th</sup> season)
34	Pete Colabella, Assistant Coach (1 <sup>st</sup> season)
25	Claude Love, Assistant Coach (1 <sup>st</sup> season)

# BASEBALL 1998-99...

## Schedule...

DATE	DAY	OPPONENT	TIME
January 16	Saturday	NSU ALUMNI GAME	1 p.m.
January 23	Saturday	Florida Sun Conference Pre-Season All-Star Game at Daytona Beach	1 p.m.
January 26	Tuesday	at Broward Community College (exhibition)	3 p.m.
January 27	Wednesday	BROWARD COMMUNITY COLLEGE (exhibition)	7 p.m.
January 30	Saturday	at Florida Tech	1 p.m.
January 31	Sunday	at Florida Southern	1 p.m.
February 3	Wednesday	at Barry University	2:30 p.m.
February 6	Saturday	FLORIDA SOUTHERN	1 p.m.
February 10	Wednesday	BARRY UNIVERSITY	7 p.m.
February 13	Saturday	*at Embry-Riddle University (double-header)	12 p.m.
February 14	Sunday	*at Embry-Riddle University	12 p.m.
February 16	Tuesday	FLORIDA TECH	3 p.m.
February 19	Friday	*at Webber College	2:45 p.m.
February 20	Saturday	*at Webber College (double-header)	12 p.m.
February 24	Wednesday	TRINITY INTERNATIONAL UNIVERSITY	7 p.m.
February 26	Friday	*PALM BEACH ATLANTIC COLLEGE	7 p.m.
February 27	Saturday	*PALM BEACH ATLANTIC COLLEGE (double-header)	1 p.m.
March 2	Tuesday	UNIVERSITY OF TAMPA	7 p.m.
March 3	Wednesday	UNIVERSITY OF TAMPA	3 p.m.
March 4	Thursday	VILLANOVA UNIVERSITY	7 p.m.
March 5	Friday	WILLIAM PATTERSON	7 p.m.
March 8	Monday	MONMOUTH	7 p.m.
March 9	Tuesday	ST. AMBROSE	7 p.m.
March 10	Wednesday	DOMINICAN	7 p.m.
March 12	Friday	CONCORDIA	7 p.m.
March 13	Saturday	ECKERD COLLEGE	7 p.m.
March 14	Sunday	ECKERD COLLEGE	1 p.m.
March 16	Tuesday	at Lynn University	2:45 p.m.
March 17	Wednesday	INDIANA	7 p.m.
March 19	Friday	*FLORIDA MEMORIAL COLLEGE	7 p.m.
March 20	Saturday	*FLORIDA MEMORIAL COLLEGE (double-header)	1 p.m.
March 24	Wednesday	*TRINITY INTERNATIONAL UNIVERSITY	7 p.m.
March 26	Friday	*at Warner Southern College	3 p.m.
March 27	Saturday	*at Warner Southern College (double-header)	1 p.m.
March 30	Tuesday	SPRING ARBOR	7 p.m.
March 31	Wednesday	LYNN UNIVERSITY	7 p.m.
April 2	Friday	SPRING ARBOR	7 p.m.
April 9	Friday	*at St. Thomas University	7 p.m.
April 10	Saturday	*at St. Thomas University (double-header)	1 p.m.
April 16	Friday	*FLAGLER COLLEGE	7 p.m.
April 17	Saturday	*FLAGLER COLLEGE (double-header)	1 p.m.
April 20	Tuesday	LYNN UNIVERSITY	7 p.m.
April 21	Wednesday	TRINITY INTERNATIONAL UNIVERSITY	7 p.m.
April 23	Friday	*NORTHWOOD UNIVERSITY	7 p.m.
April 24	Saturday	*NORTHWOOD UNIVERSITY (double-header)	1 p.m.
May 3	Monday	Start of Florida Sun Conference Tournament	TBA
May 10	Monday	Start of SE Region Tournament	TBA
May 24	Monday	Start of NAIA National Tournament at West Palm Beach, FL	TBA

\*Denotes Florida Sun Conference match  
 Italics indicates tournament game

HOME GAMES played at NSU Baseball Complex (located just south of Miami Dolphins Training Facility on 75<sup>th</sup> Ave.)

# BASEBALL 1998-99...

## 1998 outlook...Sonny Hansley previews the season...

### The head coach... closing in on 400 wins...

"To me, all the numbers are just that... numbers. Like everybody else, we don't even want to think about numbers until after retirement, and see what it looks like at the end. The focus is certainly not on whether or not I get 400 wins or not, it's on improving some things after what happened last year, and to get back to winning baseball games. I think maybe after I retire I might look back at what was accomplished. At this point, though, it's nice to be able to say that we're going to achieve that number of wins, but there's just so many other things that go on that go on that are more important than winning 400 games. Reestablishing ourselves, like I said, is more important to me than anything else, having the kids feel good about themselves because I don't think they did feel very good about last year."

### Proving that last year was a fluke...

"I think if you take a triangle and look at it, there's three things that are important for us. At the top of the triangle is pitching, there's no question that that's it. The second part is going to be our team defense, how well we play there. Last year we were about average, we made some mistakes. And the third is timely hitting, and I don't mean that we have to have three guys hitting .300, but you have to have guys that will step up when the time comes and get the key hits. We talk about injuries and those type of things, and it played a big part in it, but you can't dwell on it. You have to have players—my responsibility is to bring in players that can step up when somebody gets hurt, and I think that we have some pieces of that in place now so that if somebody goes down with injury, somebody can step in. Obviously, we're still relying on some young pitchers, but we've got better pitchers back and I feel good about them. So pitching, defense and timely hitting, those are the three things that we've been focusing on since September.

"This is a rebuilding process. We just don't know what we've got. I know the conference is stronger, all other teams have good players, but we've got good players, too. I think our team's probably more focused, we're more closely knit than last year, we seem to get along a little bit better. Yeah, we had a lot of new guys last year, but younger guys need to be led by older guys. You need senior leadership, and I think we've got some seniors that have focused on that as far as making sure kids understand what's expected of them. Can I predict what we're going to be like? I couldn't tell you. I think we've got some guys that can pitch, I think we've got a good defense that can make the big play. I'm anxious to get started, I think we all are, to see what it looks like."

### Breaking down the triangle, starting with the pitching...

"We still have some question marks as far as who's going to be where. Right now, Blake Paynter is going to be our number

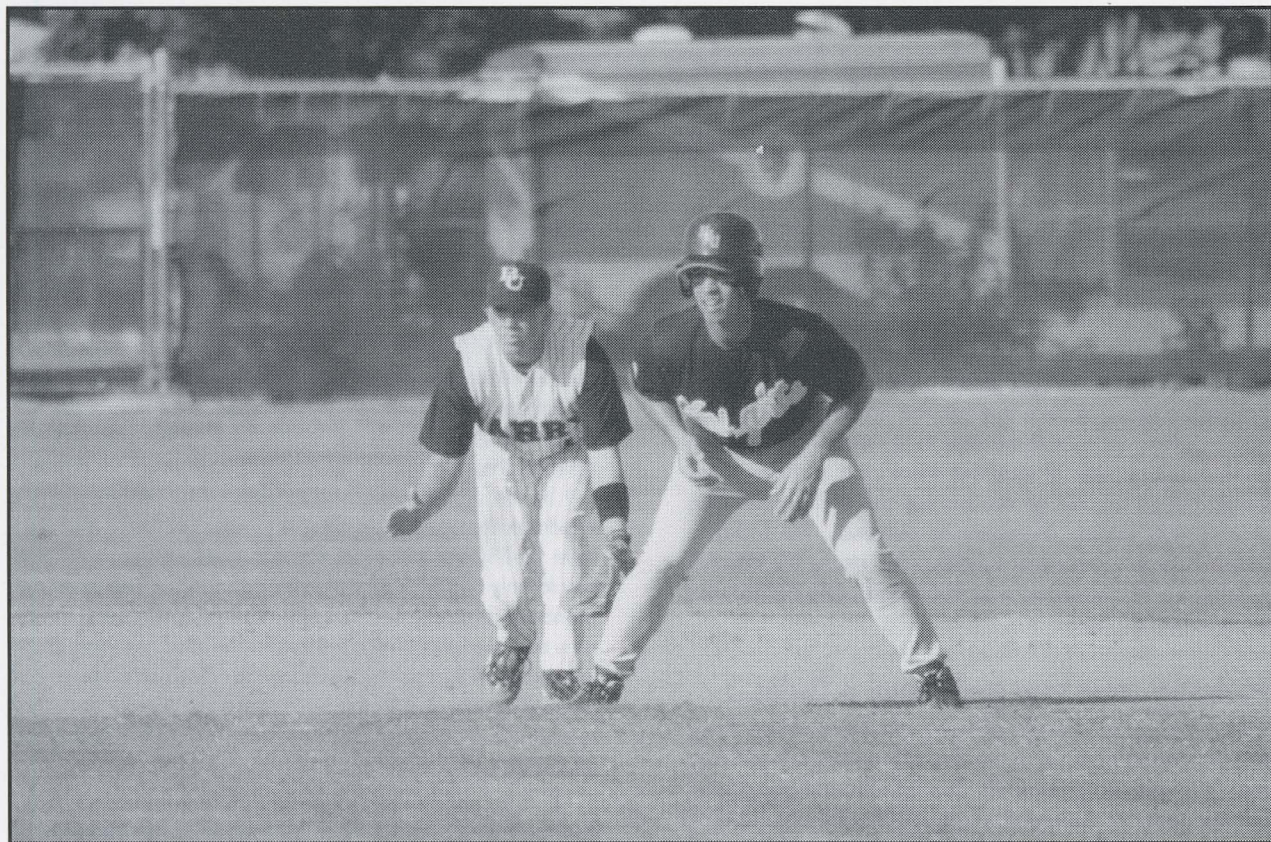
one guy. He's worked himself into great shape, he's had a great summer, he really dedicated himself to getting some innings and getting some experience against older players. Behind him will be Jona Elisco at number two, a quality left hander who's a great competitor and an outstanding athlete who knows how to win, he's channeled all of his energies into baseball as opposed to just kind of doing a little baseball and playing basketball. From there, it's open as far as who's going to be the number three guy. Probably right there will be Jim Birch, Todd Gittleman, Edwin Espinet and even Joe Giummule. I think the other strong part is that the fact that we've got guys that are resilient, they can pitch in relief or they can start. Our pitchers will be on a pitch count early, about 110 pitches, so it's important that they have efficient innings, they can't afford to have 20-25 pitch innings for a number of reasons, no. I they would only be pitching into the fourth or fifth inning then, and number 2, to pitch 25 pitches, they're probably giving up more runs than we want. From a closing standpoint, we have Kevin Scharfman of Cooper City, who we're real excited about, and Steve Thomas, a transfer from Valencia. Steve's got some experience coming off an arm injury, and Kevin's got good experience at Cooper City."

### Second part of the triangle—defense...

"We think we're really strong up the middle. Right now we've made a switch in taking Ben Prill and putting him at first base and putting Norberto Lopez starting at catching, and putting Ryan Pretz behind him, who's a transfer from Missouri. Both are quality catchers, both have very strong arms, Norberto is hitting the ball really well right now, and Ryan Pretz is a very good hitter also. Behind the plate, up the middle I think we're stronger. Pat Nugent is a freshman from Daytona Beach and Brian Needle from Plantation will be at shortstop, right now Nugent looks like he's got the inside track on that, he's played very well, and at second base we have Tommy Molina, who has really improved defensively, he was charged with spending the summer and fall getting lots of ground balls and working on his fielding, and behind him is Matt Cleveland, who started some games for us last year and who's come in this year with a whole new attitude and is in shape and plays very well defensively. Turns a double play very well, as does Molina. And then we've got Tommy Ayala, who led us in hitting, and is in control of the outfield. So there's the key, we've got the guys pitching wise at the top, and at the left hand side of the triangle we have the defense up the middle, and then there's the rest of the defense. From there, we've got Rolando Bello from Pace High School at third base, a freshman who will be a really super player, and at first base Ben Prill will start there as long as he stays healthy, and if not, Luke Albert will be there. Then in left field we've got Chris Villano, and then Charlie Vaughn in right. Behind them, we've got David Mamone who's got great speed, and he did some great things for us last year, Richard Garcia who's a freshman who will back up Tommy in center field, and in right field Angel Nieves backing up, who's probably got the

CONTINUED ON NEXT PAGE

# BASEBALL 1998-99...



## Freshman Rolando Bello

CONTINUED FROM PREVIOUS PAGE

best arm of anybody on the team. Charles Cerrato would be more of a pitch hitter and designated hitter, but could definitely play the field.

\*

"I think our young defense learned a lot last year, they did not hurt us in the outfield at all. Tommy made some outstanding catches, Chris Villano never hurt us, we had Vaughn who was only a sophomore who we had to move over to third base last year, and then Mark Groeneveld. But the freshmen never hurt us in the outfield. And look at their hitting, Tommy was at .359 and Chris was just a little bit less than .300, they had 30 or so RBI as freshmen, which is not bad. Chris likes to hit in clutch situations. So I don't think these guys will be intimidated or in awe of anybody, they're going to perform for us."

## Wrapping up the triangle... timely hitting...

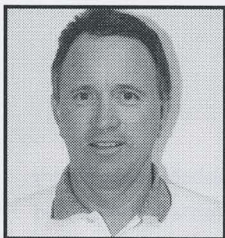
"Our seniors have got to step up, timely hitting. Ben Prill, Norberto, Tommy Molina, Charlie Vaughn... those guys, they have to hit in the clutch situations. We know that Tommy Ayala is going to get on base. We know that Bello and others will be ready later on to be those kinds of hitters, but everybody else has got to hit. Luke Albert, he's in the lineup, he has to hit. Pat Nugent, if he's the shortstop, we like him because he gets on base. He has to hit. Everybody has to hit for us to be successful."

"Looking back on games that we lost last year, there was probably at least a dozen of them where a hit here or a hit there that we could have won. That's with a team that was certainly decimated by injuries, Jerry Simmons virtually out all year and John Hassel not pitching at all, we still were right there. So I'm optimistic about what's going to happen. But like I say, this team is playing a tougher schedule this year, the conference is tougher, and everybody's still coming after Nova."

## High expectations...

"I think our expectations here, legitimately, would be in a fight for the conference championship, I think that's our goal, and I would never go into a season thinking less than that. Obviously, we have a tough opening first few weeks, and then we open up our conference schedule with Embry-Riddle, that's critical... on the road at Embry-Riddle in the middle of February. Our team will quickly understand what it takes to win at this level in this conference. And they will learn quickly. But we're looking forward to the challenge."

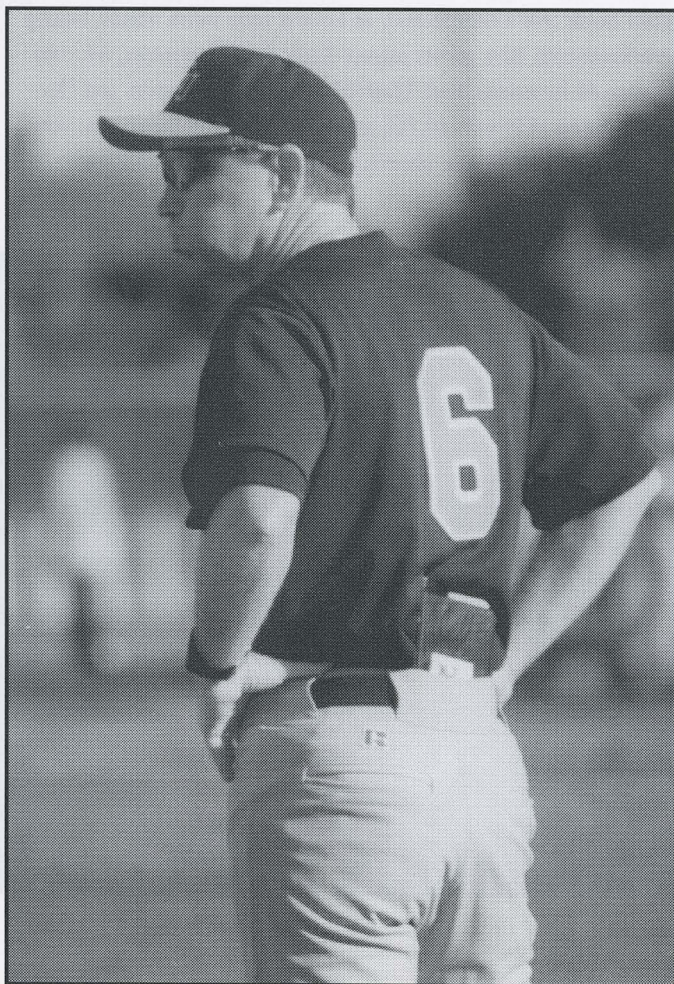
# BASEBALL 1998-99...THE COACHES



## SONNY HANSLEY Head Coach

In 11 seasons at the helm of Nova Southeastern University's baseball program, head coach Sonny Hansley has seen his share of big victories. "We've had quite a few over the years," said Hansley, who has been working in NSU's department of athletics since 1981-82. "The funny thing is, when we first started [baseball] in 1987-88, we beat North Florida in a double-header, not even knowing who North Florida was. We had 15 players, they had 30... they came to our field, which wasn't a very good one at the time like it is now... they were just big-time. And we beat them. It was quite an accomplishment, and, at that time, we didn't even know what we had done. And, of course, other wins, like beating Florida Southern, Providence when they won the Big East championship, Creighton... and winning our conference, too, three times. We've seen some big wins here."

He has another big one coming this season. Which one it will be, though, remains to be seen. That's because Hansley, who turns 52 this year, is about to turn 400 as well. Hansley enters his 12<sup>th</sup> season as head coach of the Knights this season, and in doing so he brings with him an 11-year coaching record of 385-216-3... thus, being just 15 wins shy of the magical 400. Hansley has seen it all with the Knights. Under his direction, NSU has captured three Florida Sun Conference championships—two regular-season titles (in 1993-94 and 1996-97), and one tournament title (1994-95), thus advancing to the NAIA Southeast Region Championship Tournament three times. In all his years, his squads failed to make the post-season tournament just once (that being last year, when the team finished 26-25 overall). He's also had only one losing season, that being his first year when his small-in-numbers squad finished 18-32.

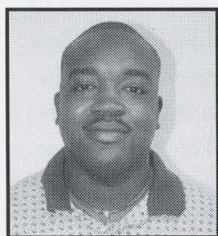


Born August 1, 1947, in Chicopee, MA, Hansley remained a hometown fixture and graduated from Chicopee High in 1965. While there, he was a member of the school's football, basketball and baseball teams, helping the baseball unit capture three consecutive state baseball championships and finish second the other year. He then received his bachelor's degree in 1969 from American International College (Hansley played college basketball and baseball, participating in two national basketball championship tournaments during the 1967-68 and 1968-69 seasons) and his master's from Springfield College in 1976. He arrived at Nova Southeastern in 1982, accepting the position of the University's first Director of Athletics with the responsibility of building an entire intercollegiate program from scratch. He did, turning it into a 10-team, \$1 million department before stepping down from the post in the summer of 1995 to concentrate solely on baseball and camps. Hansley was also the school's first-ever men's basketball coach, holding those reigns before stepping down in order to lead the baseball team. He has been named the Florida Sun Conference's Baseball Coach of the Year in 1994 and 1997, District 7 Coach of the Year in 1994, and District 7 Administrator of the Year for 1992-93. He and his wife of 27 years, Donna, reside in Cooper City. His daughter, Michelle, 21, attends NSU, while his son, Ken, 18, is a senior at Cooper City High.

# BASEBALL 1998-99...THE COACHES

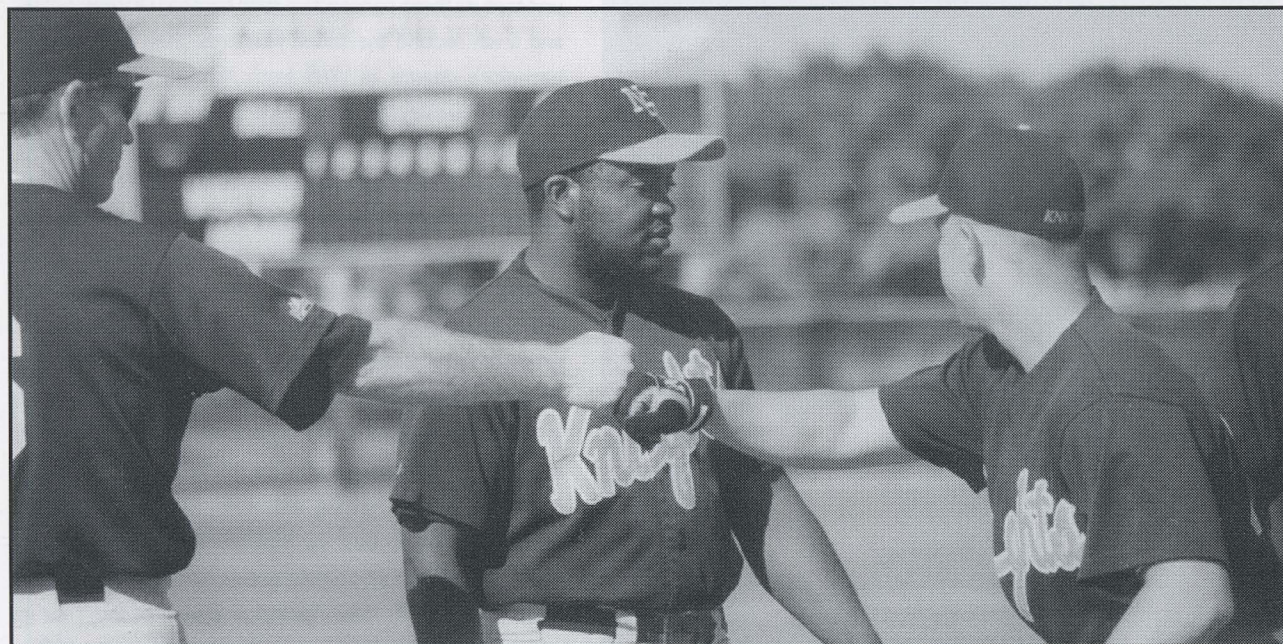
## PETE COLABELLA Assistant Coach

A familiar face to Broward County high school baseball fans, former Hollywood Hills High School coach Pete Colabella joined Sonny Hansley's staff this past October to handle the pitchers and directly assist Hansley in all other areas. Colabella had been with Hollywood Hills from 1986-98, being named Broward County Coach of the Year in 1989, and assisting the State All-Star Series in 1997. He began his career in South Florida as Cooper City High's head basketball coach from 1980-84, after coming down from New York, where he coached both baseball and softball at Woodlands High from 1974-79. "We're very excited to have Pete join our staff," Hansley said. "He is a very knowledgeable baseball person who will bring a lot of additional respect to our program. This is definitely a great addition to Nova Southeastern University."



## CLAUDE LOVE Assistant Coach

Perhaps the greatest player to ever put on a Nova Southeastern University baseball uniform, Claude Love enters his first season as an assistant coach with the Knights. Love played at NSU from 1993-97, and can be found throughout the Knights' record book. He's easy to find, as Love is atop three season batting records (at-bats, 226; games played, 61; hits, 82), and six career marks (at-bats, 824; games played, 226; hits, 299; doubles, 63; runs batted in, 216; total bases, 477). He was also named NAIA First-Team All-American, First-Team NAIA Southeast Region, and First-Team Florida Sun Conference following his sophomore season when he hit .434 with 68 RBI and tallied 23 stolen bases. "I'm very pleased that Claude has joined our staff," Hansley said. "The example he can set for our players, both as a player and as a leader, is amazing. He's definitely a solid addition to our program."



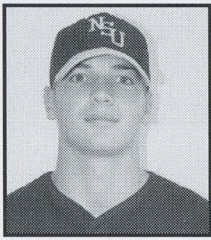


# BASEBALL 1998-99...THE PLAYERS



Junior pitcher Edwin Espinet

# BASEBALL 1998-99...



## LUKE ALBERT

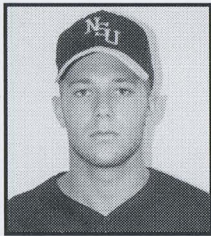
Sophomore, 6-2, 200, IB/C, B/R

Hollywood, FL/Broward Community College, 1998/

Chaminade-Madonna High, 1997

PRE-COLLEGE: Hit .322 in Homestead League this past off-season... A Second Team All-County selection at Chaminade-Madonna in 1997, being named All-Conference in 1996-97... Named to All-State All-Star Team at Sebring in 1997... Drafted by Chicago White Sox in 1997. PERSONAL: Born April 25, 1979, in Hollywood, FL... Sports Management major... Enjoys paddleball.

# 20



## TOMMY AYALA

Sophomore, 5-11, 175, OF, L/L

North Lauderdale, FL/Coconut Creek High, 1997

1997-98: Named the Knights' Most Improve Player last season, after having a stellar freshman season consisting of a team-best .359 batting average and 47 runs scored. PRE-COLLEGE: Member of Broward North All-Star Team in 1997... Named Second Team All-County... Captained Coconut Creek Cougars as senior, hitting .333 and stealing 25 bases... Played for 10 years in Fort Lauderdale area. PERSONAL: Born July 3, 1979, in Ft. Lauderdale, FL... Business major... Enjoys fishing, body boarding.

# 11

YEAR	AVG	GP/GS	AB	R	H	2B	3B	HR	RBI	TB	SLG%	BB	HBP	SO	OB%
1998	.359	48-47	153	47	55	7	0	0	16	62	.405	29	9	33	.482



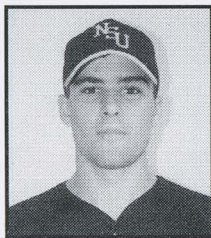
## ROLANDO BELLO

Freshman, 6-0, 180, IF, L/R

Miami, FL/Pace High, 1998

PRE-COLLEGE: Helped Pace High to district and regional prep championships last year, leading team to state title game... Had most runs batted in on squad... Member of Team USA in 1991-92 for Juvenile World Series... Recipient of Celtic Award of Immaculate School in 1994... Captured Channel 51's Golden Cup Award as Dade County's Best All-Around Player in 1993... All-Star in Immaculate School in Pascual Academy throughout baseball career... Member of varsity team all four years of high school. PERSONAL: Born September 5, 1979, in Miami, FL... Enjoys basketball, weight lifting.

# 13



## SETH BENEDON

Freshman, 6-1, 187, RHP

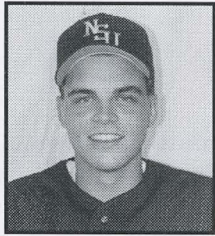
Coral Springs, FL/Rutgers University, 1998/

Douglas High, 1997

PRE-COLLEGE: Nominated for Big League All-Star Team in 1997 after helping Douglas capture school's first-ever district championship... Promoted to varsity squad in 1996... Played junior varsity baseball in 1994 and 1995... Member of All-Star Teams from 9-15. PERSONAL: Born April 20, 1979, in Englewood, New Jersey... Sports and Wellness major... Enjoys hockey, movies, cartoons, football.

# 37

# BASEBALL 1998-99...



## **JAMES BIRCH** Junior, 6-0, 190, RHP

# 12

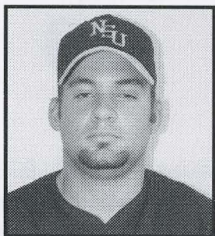
### **Davie, FL/Florida Bible Christian School, 1996**

1997-98: One of the most reliable players for the Knights last season, playing four positions (third base, first base, shortstop and pitcher)... Came on strong as a pitcher, compiling a 4-0 record with a 2.92 earned run average. CAREER: Named Academic All-Conference in 1997-98... Batted .286 as a freshman while playing in 30 games, starting 20, in helping the Knights advance to the NAIA SE Region title game. PRE-COLLEGE: Captained Florida Bible squad in 1995-96... Student-Athlete of the Year... Chosen as All-Star at "Stars of Tomorrow Baseball Showcase" from over 120 ballplayers... Participated in Broward County High School

All-Star Game in 1996... Played club ball with SWBJAA from age 5-17, making All-Star Team each season from age 10-on... Helped District 10 Junior League, District 10 Big League teams capture respective titles... Made Broward County Big League All-Star Team in 1995. PERSONAL: Born December 28, 1977, in North Miami, FL... Legal Studies major... Enjoys weightlifting, drawing, reading.

YEAR	AVG	GP/GS	AB	R	H	2B	3B	HR	RBI	TB	SLG%	BB	HBP	SO	OB%
1997	.286	30-20	63	13	18	1	0	0	10	19	.302	9	4	8	.392
1998	.200	37-16	55	5	11	1	0	0	3	12	.218	8	0	5	.297
TOT	.243	67-36	118	18	29	2	0	0	13	31	.260	17	4	13	.344

YEAR	ERA	W-L	APP	GS	CG	SV	IP	H	R	ER	BB	SO	WP	HB	BK
1998	2.93	4-0	9	1	0	1	30.2	28	15	10	18	32	3	2	0



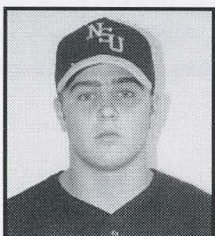
## **CHARLES CERRATO** Junior, 5-10, 195, IF/OF, R/R

# 9

### **Pembroke Pines, FL/Cooper City High, 1996**

1997-98: Hit .323 as a sophomore last season, starting 23 of 38 games played. CAREER: Had a stellar freshman season for NSU, batting .315 while appearing in 46 games, starting 23 of them. PRE-COLLEGE: A four-year letterman at Cooper City High, hitting .380 his senior year... Represented the South in the 1996 Broward County All-Star Game... Prep career batting average of .350... Has played the infield his entire playing career... Graduated CCTY with 3.1 grade point average. PERSONAL: Born May 16, 1978, in North Miami, FL... Education major... Enjoys working out, tattooing, music.

YEAR	AVG	GP/GS	AB	R	H	2B	3B	HR	RBI	TB	SLG%	BB	HBP	SO	OB%
1997	.315	46-23	89	27	28	7	1	2	22	43	.483	2	0	18	.316
1998	.323	38-23	99	12	32	2	0	1	18	37	.374	2	2	24	.346
TOT	.319	84-46	188	39	60	9	1	3	40	80	.428	4	2	42	.331



## **MATT CLEVELAND** Sophomore, 5-10, 175, 2B, R/R

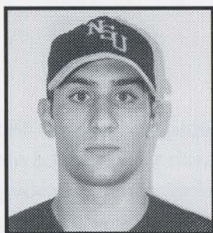
# 15

### **Fort Lauderdale, FL/Fort Lauderdale Christian, 1997**

1997-98: Came to Nova Southeastern University's Knights in time for the 1997-98 season, helping the squad finish 26-25 by appearing in 22 games (starting 11 of them)... tallied .311 on-base percentage freshman year... Was 3-for-3 on stolen base attempts. PERSONAL: Born June 18, 1979... Liberal Arts major... Enjoys golf, basketball.

YEAR	AVG	GP/GS	AB	R	H	2B	3B	HR	RBI	TB	SLG%	BB	HBP	SO	OB%
1998	.184	22-11	38	9	7	1	0	0	1	8	.211	5	2	13	.311

# BASEBALL 1998-99...



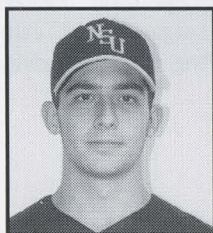
## **ANTHONY DIPIERO**

**Freshman, 6-1, 175, RHP**

**Youngstown, OH/Cardinal Mooney High, 1998**

PRE-COLLEGE: Helped Cardinal Mooney prep squad capture 1997 district and sectional championships... A 1997 Connie Mack regional qualifier. PERSONAL: Born February 13, 1980, in Youngstown, OH... Life Science major.

# 36



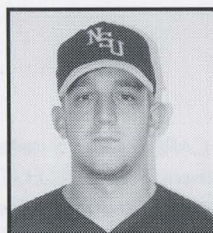
## **JONA ELISCO**

**Freshman, 5-11, 175, LHP**

**Fort Lauderdale, FL/Westminster Academy, 1998**

PRE-COLLEGE: A First Team All-County baseball player while at Westminster all four years of school... Also had an incredible prep basketball career, being named First Team All-County for three years, as well as a finalist for Mr. Florida Basketball... Was the state's Player of the Year (Class 1A-3A) last year... Named to Jupiter Classic, Krueh Classic, and State Tournament All-Tournament Teams... Named to SEC First Team for both baseball and basketball for three years... Also a member of Honor Society for three years. PERSONAL: Born February 5, 1980, in Fort Lauderdale, FL... Enjoys swimming, reading.

# 2



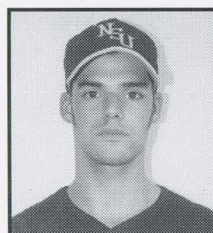
## **JAMES ENGLE III**

**Junior, 5-10, 180, LHP**

**Sunrise, FL/Broward Community College, 1998/  
St. Thomas Aquinas High, 1996**

CAREER: Starter for BCC Seahawks, moving from middle reliever to No. 3 in rotation. PRE-COLLEGE: Never played high school baseball... Captured Johnny Amodeo Award in 1992. PERSONAL: Born May 16, 1978, in Hollywood, FL... Business Management major... Enjoys fishing, the beach, baseball card and autograph collecting.

# 30



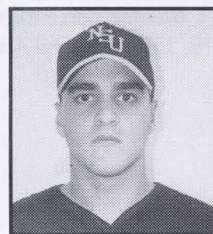
## **EDWIN ESPINET**

**Junior, 6-0, 165, RHP**

**Orlando, FL/St. Johns River Community College, 1998/  
William Boone High, 1996**

CAREER: Named Who's Who Among American Junior College Students... Led St. Johns River in amount of conference wins. PRE-COLLEGE: Captured 1996 Amateur Athletic Union Student/Athletic Excellence Award, as well as 1996 Burger King Coaches Achievement Award at Boone High. PERSONAL: Born July 11, 1978, in Bay County, FL... Business Marketing major... Enjoys baseball collectibles, music, martial arts, 3D puzzles.

# 32



## **RICHARD GARCIA**

**Freshman, 6-2, 185, OF/P, R/R**

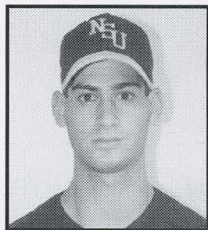
**Miami, FL/Coral Park High, 1998**

PRE-COLLEGE: As a senior at Coral Park, honored with Outstanding Senior Athlete Award, Senior of the Year Award, Scholar Athlete Award, and Gold Glove Award... Also named Honorable Mention All-Dade (Class 6A) by hitting .300 with one home run, 13 runs batted in, 28 hits, and no errors made in center field... Also was 1-0 from the mound with a 2.33 earned run average... Helped Coral Park High to district and regional championships in 1997... Was a stellar youth league pitcher, being named Flagami's Most Valuable Player by going 18-0 in 120 innings pitched with 160 strikeouts... At Coral Park, was named Best

# 31

Junior Varsity Pitcher in 1995... Most Hustle Award in 1996, when he batted .350 with two doubles, two triples, two home runs and 30 RBI. PERSONAL: Born July 12, 1980, in Miami, Florida... Secondary Education major... Enjoys Dancing, writing, coaching.

# BASEBALL 1998-99...



## TODD GITTLEMAN

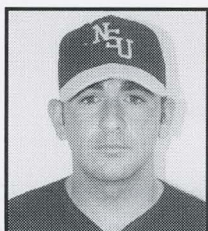
**Sophomore, 6-1, 170, RHP**

**Hollywood, FL/Hollywood Hills High, 1997**

# 16

1997-98: As a freshman, pitched the third-highest amount of innings for the Knights last year (62.2), going 5-5 with 53 strikeouts... Played summer ball in Homestead this past off-season. PRE-COLLEGE: Led Broward County with 94 strikeouts as senior with Hollywood Hills High... Hit .372 with three home runs and 25 runs batted in, while being named All-County for both Miami Herald and Sun-Sentinel... Received Offensive Most Valuable Player as senior. PERSONAL: Born February 9, 1979, in Bridgeport, CT... Sports Management major.

YEAR	ERA	W-L	APP	GS	CG	SV	IP	H	R	ER	BB	SO	WP	HB	BK
1998	8.04	5-5	15	11	2	1	62.2	65	66	56	64	53	16	10	2



## JOE GIUMMULE

**Senior, 5-10, 185, RHP**

**Margate, FL/Bethany College, 1996/**

**Coconut Creek High, 1995**

# 17

1997-98: Went 3-3 for the Knights as a junior last season, striking out 27 batters in 55.1 innings. CAREER: Started nine of NSU's first 10 games (in which he led the Knights in on-base percentage) before injuring his knee in 1997, getting reconstructive surgery performed... Came to NSU from Bethany College, where he was All-PAC Honorable Mention pitcher and Third Team All-PAC as a third baseman. PRE-COLLEGE:

As prep senior, named First Team All-County, as well as starting third baseman in Senior All-Star Game... Helped 1994 Cougars to state championship. PERSONAL: Born February 4, 1976, in Ft. Lauderdale, FL... Elementary Education major... Enjoys fishing, snorkeling.

YEAR	AVG	GP/GS	AB	R	H	2B	3B	HR	RBI	TB	SLG%	BB	HBP	SO	OB%
1997	.250	10-9	24	9	6	0	0	0	2	6	.250	8	2	4	.471

YEAR	ERA	W-L	APP	GS	CG	SV	IP	H	R	ER	BB	SO	WP	HB	BK
1998	6.83	3-3	13	7	2	1	55.1	66	48	42	21	27	5	12	2



## NORBERTO LOPEZ

**Senior, 5-8, 180, C**

**Hialeah, FL/Broward Community College, 1997**

**Pace High, 1995**

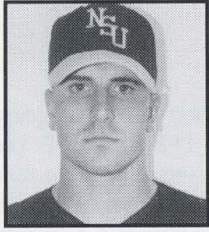
# 7

1997-98: Started 26 of 32 games for the Knights last year as a junior, tallying a .343 on-base percentage. CAREER: Named to Junior College All-Star Game in Kissimmee, FL, representing BCC. PRE-COLLEGE: A four-year varsity letterman at Pace, being named captain and Most Valuable Player as senior... Hit .358 as junior and also participated in Seabring All-Star Game, Bucky Dent All-Star Game, and the Showcase

Classic All-Star Game as senior. PERSONAL: Born December 9, 1976, in Havana, Cuba... Adm. Studies major.

YEAR	AVG	GP/GS	AB	R	H	2B	3B	HR	RBI	TB	SLG%	BB	HBP	SO	OB%
1998	.235	32-26	85	3	20	5	0	0	14	25	.294	14	2	18	.343

# BASEBALL 1998-99...



## DAVE MAMONE

Junior, 6-1, 195, OF, R/R

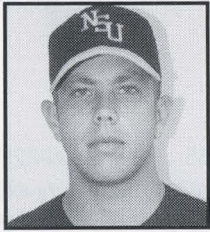
Wellington, FL/Upper Iowa University, 1997/

Wellington High, 1996

1997-98: Appeared in 42 games for the Knights as a sophomore, tallying a .413 slugging percentage. PRE-COLLEGE: Helped Coral Springs American capture 1997 Big League championship... Hit .444 that summer with 10 home runs, 31 runs batted in... Helped Wellington advance to Class 6A Final Four in 1995. PERSONAL: Born September 3, 1978, in New Brunswick... Business Administration major... Enjoys fishing, weightlifting.

# 3

YEAR	AVG	GP/GS	AB	R	H	2B	3B	HR	RBI	TB	SLG%	BB	HBP	SO	OB%
1998	.217	42-10	46	24	10	3	0	2	8	19	.413	3	1	10	.275



## TOMMY MOLINA

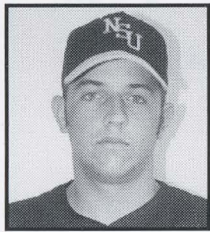
Senior, 5-8, 175, 2B, R/R

Miami, FL/Miami-Dade Community College, 1997/Brito

1997-98: Started 42 of 46 games played in his first year with the Knights last season... Hit .326 with 10 doubles... Had .461 slugging percentage, .417 on-base percentage. PERSONAL: Born October 27, 1976... Sport Management major... Enjoys basketball, surfing.

# 5

YEAR	AVG	GP/GS	AB	R	H	2B	3B	HR	RBI	TB	SLG%	BB	HBP	SO	OB%
1998	.326	46-42	141	36	46	10	0	3	19	65	.461	17	7	15	.417



## BRYAN NEEDLE

Sophomore, 6-2, 195, SS, R/R

Sunrise, FL/Plantation High, 1997

1997-98: Started all 15 games played in his freshman season with the Knights, being hampered by injuries... Still hit .319 with 10 runs batted in and one home run... Also appeared in nine games as a pitcher. PRE-COLLEGE: As prep senior, went 4-2, finishing third in Broward County with 1.79 earned run average, helping Colonels advance to second round of playoffs... Named King of the Hill at PHS with 3.95 grade point average... A three-year varsity letter winner... Honored with 1995 PHS Gold Glove Award, 1996 PHS Coach's Award, 1996 All-Conference Team, 1996 Honorable Mention All-County... Selected to

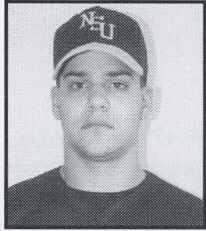
Who's Who Magazine... 1997 Big League stats include .365 batting average with three HR, 22 RBI... Straight-A Honor Roll as freshman, sophomore. PERSONAL: Born October 28, 1978, in Plantation, FL... Secondary Education major... Enjoys reading, weightlifting.

# 8

YEAR	AVG	GP/GS	AB	R	H	2B	3B	HR	RBI	TB	SLG%	BB	HBP	SO	OB%
1998	.319	15-15	47	7	15	0	0	1	10	18	.383	3	0	5	.360

YEAR	ERA	W-L	APP	GS	CG	SV	IP	H	R	ER	BB	SO	WP	HB	BK
1998	12.95	0-3	9	0	0	0	24.1	55	41	35	10	13	2	4	0

# BASEBALL 1998-99...



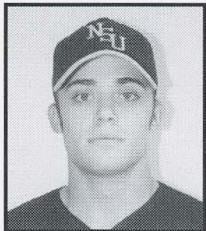
## ANGEL NIEVES

**Sophomore, 6-2, 202, OF, R/R**  
**Davie, FL/Western High, 1997**

# 14

1997-98: As a freshman, appeared in 21 games for the Knights. PRE-COLLEGE: Captured Western's Hitting Award as senior, helping team to school's best-ever record of 22-7... Batted .415 with 27 runs batted in and 19 runs scored... *Sun-Sentinel* and *Miami Herald* Second Team All-County... Named to Broward All-Star Team as senior... Played in four Khoury League World Series. PERSONAL: Born July 14, 1979, in Miami, FL... Business Administration major... Enjoys stereo installation.

YEAR	AVG	GP/GS	AB	R	H	2B	3B	HR	RBI	TB	SLG%	BB	HBP	SO	OB%
1998	.000	21-1	17	9	0	0	0	0	1	0	.000	1	1	4	.105

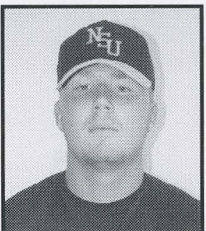


## PATRICK NUGENT

**Freshman, 5-10, 155, SS, R/R**  
**Ormond Beach, FL/Father Lopez High, 1998**

# 21

PRE-COLLEGE: Had a sensational prep senior year in 1998, being named All-County, All-Area, Class 2A All-State, Father Lopez Male Athlete of the Year, Defensive Player of the Year... A nominee for Volusia/Flagler County Male Athlete of the Year, as well as 1998 High School Heisman... Helped Father Lopez High to Class 2A title game... Named to All-Area Teams as sophomore, junior, senior, helping teams advance to Final Four each year. PERSONAL: Born September 19, 1979, in Long Beach, CA... Pre-Law major.



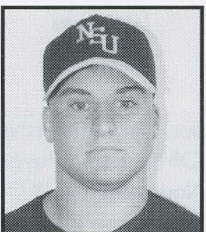
## BLAKE PAYNTER

**Junior, 6-4, 215, RHP**  
**Cooper City, FL/Barry University, 1997/**  
**Cooper City High, 1996**

# 24

1997-98: Pitched in 13 games in his first year with the Knights, going 2-3 with 40 strikeouts in 49.0 innings.. CAREER: Was second on Barry in appearances, recording a 3-1 record. PERSONAL: Born May 2, 1978, in Merrville, IN... Business Administration major... Enjoys the guitar, basketball, the beach, pistol and rifle shooting.

YEAR	ERA	W-L	APP	GS	CG	SV	IP	H	R	ER	BB	SO	WP	HB	BK
1998	6.61	2-3	13	6	1	0	49.0	56	51	36	41	40	10	7	0



## RYAN PRETZ

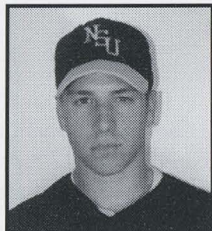
**Junior, 5-8, 200, C, R/R**  
**Poplar Bluff, MO/Three Rivers Community College, 1998/**  
**Poplar Bluff High, 1996**

# 1

CAREER: Sophomore college season cut short due to a back injury... Before accident, was hitting .330 with three home runs in 78 at-bats... Freshman year of college hit .280, signed contract with semi-pro St. Joseph Missouri Saints. PRE-COLLEGE: Hit .485 senior prep year with two home runs... Also played football, where he was All-Conference and All-District... Led team in tackles three consecutive seasons... Was a prep

wrestler as freshman, sophomore, junior, receiving All-State honors as junior. PERSONAL: Born August 28, 1978, in Poplar Bluff, MO... Sports Wellness major... Enjoys weight lifting, water sports.

# BASEBALL 1998-99...



## BEN PRILL

Senior, 6-1, 205, C/IF, R/R

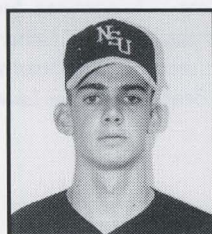
Decatur, IN/Bellmont High, 1995

# 26

1997-98: Named the Knights' Most Valuable Player as a junior, leading the team with 47 runs batted in... Had team second-best 14 doubles. CAREER: Appeared in 15 games for the Knights as a sophomore, starting 13 of them... Threw out six of 15 runners attempting to steal as sophomore, committing no errors... Played 19 games as a freshman. PRE-COLLEGE: A three-year varsity player at Belmont... Batted .330 prep senior year, leading team in RBI, and leading conference in overall defense at position and runners caught stealing... All-Conference, All-State Honorable Mention catcher... Had 15-game hitting

streak in 1994-95. PERSONAL: Born March 1, 1977, in Van Wert, OH... Sports and Wellness major... Enjoys bodybuilding, movies.

YEAR	AVG	GP/GS	AB	R	H	2B	3B	HR	RBI	TB	SLG%	BB	HBP	SO	OB%
1996	.186	19-11	43	3	8	0	0	0	3	8	.186	3	3	8	.286
1997	.171	15-13	41	1	7	1	0	0	1	8	.195	6	0	12	.277
1998	.308	48-48	159	19	49	14	1	7	47	86	.541	16	9	21	.394
TOT	.221	82-72	243	23	64	15	1	7	51	102	.307	25	12	41	.319



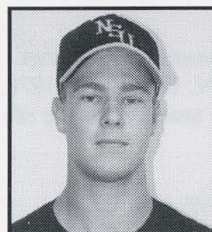
## KEVIN SCHARFMAN

Freshman, 6-5, 180, RHP

Pembroke Pines, FL/Cooper City High, 1998

# 39

PRE-COLLEGE: Led Cooper City High with 7-1 record and six saves, 59 strikeouts and 1.37 earned run average... Named Second Team All-County, while being named to Senior All-Star Game... As freshman, named Rookie of the Year with lowest ERA... Played club ball with Pembroke Lakes and Pasadena Lakes... Appeared with Coral Springs Pipers and Cooper City American Legion past few summers. PERSONAL: Born June 25, 1980, in Miami, FL... Pre-Med major... Enjoys scuba diving.



## JIMMY SESSIONS

Freshman, 5-10, 160, RHP

Pembroke Pines, FL/St. Thomas Aquinas High, 1998

# 35

PRE-COLLEGE: Went 3-4 with St. Thomas last year, recording a 1.96 earned run average... Named Third Team All-County... As a prep junior, named Honorable Mention All-County with 5-0 record, 2.96 ERA. PERSONAL: Born October 2, 1979, in Dunedin, FL... Sports and Wellness major... Enjoys umpiring.



## DREW STARKE

Freshman, 6-1, 180, C, R/R

Kingwood, TX/Kingwood High, 1998

# 27

PRE-COLLEGE: Named to All-District Team while captaining Kingwood High as senior... Recipient of the Wayne C. Simmons Memorial Scholarship for Excellence and Leadership On and Off the Field... Played in the 1996 Junior Olympic Games with the Columbia Angels. PERSONAL: Born November 18, 1979, in Battle Creek, MI... Sports Management major... Enjoys golf, weight lifting.



# BASEBALL 1998-99...



## STEPHEN THOMAS

Sophomore, 6-0, 200, RHP

Plantation, FL/Valencia Community College, 1998/

Plantation High, 1996

CAREER: Red-shirted 1997-98 baseball season due to reconstructive elbow surgery... Played 1996-97 season at Valencia, hitting .333 as an outfielder, and tallying 1-0 record, 0.00 earned run average in eight innings as a closer. PRE-COLLEGE: A three-year varsity letter winner at Plantation High... Given Colonels' Best Defense Award in 1996... 1996 Titan-Paladin Classic Most Valuable Player... All-Conference selection

as prep senior, as well as being selected to Broward North-South All-Star Game. PERSONAL: Born May 3, 1978, in Tuscon, AZ... Psychology major.

# 18



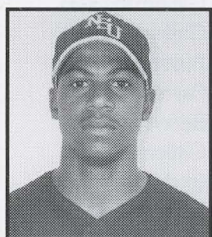
## MICHAEL TORRES

Freshman, 5-10, 185, C, R/R

Ft. Lauderdale, FL/Hollywood Hills High, 1997

PRE-COLLEGE: A red-shirt freshman for the Knights... Was a four-year varsity player at Hollywood Hills... Talled .280 batting average with 13 runs batted in senior year, being named Defensive Most Valuable Player for the Spartans... Played in Senior All-Star Game where he picked up his second Defensive MVP Award... As prep junior, received the Dick Howser Award for best attitude toward the game. PERSONAL: Born March 29, 1978, in New York, NY... Pre-Law major... Enjoys working out.

# 23



## CHARLIE VAUGHN

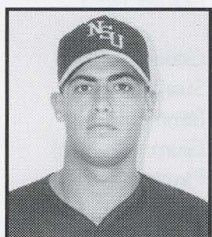
Junior, 6-1, 195, 3B/OF, R/R

Miami, FL/American Senior High, 1996

1997-98: Had a solid sophomore season for the Knights, hitting .323 with nine doubles and six home runs... Recorded a .921 fielding percentage. CAREER: As a freshman, hit .286 with one home run and 31 runs batted in. PRE-COLLEGE: Helped American Senior High to district finals and region quarterfinals as a senior. PERSONAL: Born February 13, 1978, in Miami, FL... Business major... Enjoys video games, weight lifting.

# 10

YEAR	AVG	GP/GS	AB	R	H	2B	3B	HR	RBI	TB	SLG%	BB	HBP	SO	OB%
1997	.287	60-56	181	31	52	11	4	1	31	74	.409	28	9	46	.406
1998	.346	49-44	136	41	47	9	2	6	33	78	.574	25	9	39	.474
TOT	.316	109-100	317	72	99	20	6	7	64	152	.491	53	18	85	.440



## CHRIS VILLANO

Sophomore, 5-11, 175, OF, R/R

Davie, FL/Western High, 1997

1997-98: Led team with five sacrifice flies, eight sacrifice hits as a freshman, while hitting .297 with 39 runs batted in and three home runs... Started 50 of 51 games, going the full season without committing a defensive error. PRE-COLLEGE: As prep senior, hit .429 with six HR and 27 RBI with nine stolen bases... First Team All-County for *Miami Herald*, Second Team for *Sun-Sentinel*... Named Offensive Player of the Game in Broward's North-South All-Star Game... Played in 1996 big League World Series for Broward County. PERSONAL: Born December 30, 1978, in Ft. Lauderdale, FL... Pre-Law/Legal Studies major.

# 4

YEAR	AVG	GP/GS	AB	R	H	2B	3B	HR	RBI	TB	SLG%	BB	HBP	SO	OB%
1998	.297	51-50	172	32	51	12	1	3	39	74	.430	24	1	30	.376

# 1997-98 BASEBALL RESULTS...

DATE	OPPONENT	SCORE	RECORD (FSC)	PITCHER OF RECORD
January 31	at Florida Tech	3-18 L	0-1	Needle (0-1)
February 1	at Florida Southern	3-2 W	1-1	Suarez (1-0)
February 5	BARRY UNIVERSITY	6-7 L	1-2	Needle (0-2)
February 7	at St. Leo College	1-8 L	1-3	Gittleman (0-1)
February 8	at Rollins College	10-2 W	2-3	Suarez (2-0)
February 11	at Barry University	6-28 L	2-4	Giummule (0-1)
February 14	*at Flagler College	4-1 W	3-4, 1-0	Suarez (3-0)
February 14	*at Flagler College	6-5 W	4-4, 2-0	Bennett (1-0)
February 15	*at Flagler College	1-9 L	4-5, 2-1	Gittleman (0-2)
February 17	FLORIDA TECH	6-19 L	4-6	Scalzi (0-1)
February 21	*EMBRY-RIDDLE UNIVERSITY	3-4 L	4-7, 2-2	Suarez (3-1)
February 21	*EMBRY-RIDDLE UNIVERSITY	4-13 L	4-8, 2-3	Bennett (1-1)
February 22	*EMBRY-RIDDLE UNIVERSITY	1-25 L	4-9, 2-4	Scalzi (0-2)
February 24	TRINITY INTERNATIONAL UNIVERSITY	12-8 W	5-9	Gittleman (1-2)
February 27	*WEBBER COLLEGE	12-1 W	6-9, 3-4	Suarez (4-1)
February 28	*WEBBER COLLEGE	6-2 W	7-9, 4-4	Bennett (2-1)
February 28	*WEBBER COLLEGE	8-4 W	8-9, 5-4	Gittleman (2-2)
March 2	CONCORDIA UNIVERSITY	12-10 W	9-9	Giummule (1-1)
March 4	at University of Tampa	5-19 L	9-10	Gittleman (2-3)
March 5	at University of Tampa	5-6 L	9-11	Suarez (4-2)
March 7	at Eckerd College	14-5 W	10-11	Bennett (3-1)
March 8	at Eckerd College	16-7 W	11-11	Gittleman (3-3)
March 10	vs. St. Ambrose University	4-3 W	12-11	Gittleman (4-3)
March 11	vs. Quinnipiac College	9-10 L	12-12	Needle (0-3)
March 13	*ST THOMAS UNIVERSITY	4-8 L	12-13, 5-5	Paynter (0-1)
March 14	*ST THOMAS UNIVERSITY	0-2 L	12-14, 5-6	Bennett (3-2)
March 14	*ST THOMAS UNIVERSITY	3-6 L	12-15, 5-7	Gittleman (4-4)
March 17	vs. North Dakota State University	9-8 W	13-15	Birch (1-0)
March 20	DOMINICAN COLLEGE	4-5 L	13-16	Suarez (4-3)
March 21	vs. Geneva College	6-5 W	14-16	Bennett (4-2)
March 21	vs. Geneva College	8-2 W	15-16	Gittleman (5-4)
March 22	vs. Ripon College	6-2 W	16-16	Giummule (2-1)
March 24	BAKER UNIVERSITY	6-0 W	17-16	Paynter (1-1)
March 25	TRINITY INTERNATIONAL UNIVERSITY	9-2 W	18-16	Birch (2-0)
March 27	*at Palm Beach Atlantic College	4-6 L	18-17, 5-8	Suarez (4-4)
March 28	*at Palm Beach Atlantic College	4-10 L	18-18, 5-9	Bennett (4-3)
March 28	*at Palm Beach Atlantic College	2-3 L	18-19, 5-10	Giummule (2-2)
March 31	SPRING ARBOR COLLEGE	9-5 W	19-19	Paynter (2-1)
April 1	FLORIDA SOUTHERN	6-9 L	19-20	Gittleman (5-5)
April 3	*FLORIDA MEMORIAL COLLEGE	7-2 W	20-20, 6-10	Suarez (5-4)
April 4	*FLORIDA MEMORIAL COLLEGE	7-6 W	21-20, 7-10	Bennett (5-3)
April 4	*FLORIDA MEMORIAL COLLEGE	5-2 W	22-20, 8-10	Giummule (3-2)
April 8	at Lynn University	6-7 L	22-21	Paynter (2-2)
April 10	*WARNER SOUTHERN COLLEGE	15-1 W	23-21, 9-10	Suarez (6-4)
April 11	*WARNER SOUTHERN COLLEGE	1-4 L	23-22, 9-11	Bennett (5-4)
April 11	*WARNER SOUTHERN COLLEGE	2-5 L	23-23, 9-12	Giummule (3-3)
April 14	LYNN UNIVERSITY	15-11 W	24-23	Birch (3-0)
April 17	TRINITY INTERNATIONAL UNIVERSITY	10-3 W	25-23	Suarez (7-4)
April 24	*at Northwood University	6-7 L	25-24, 9-13	Suarez (7-5)
April 25	*at Northwood University	6-5 W (12)	26-24, 10-13	Birch (4-0)
April 25	*at Northwood University	4-10 L	26-25, 10-14	Paynter (2-3)

\*Denotes Florida Sun Conference game  
HOME GAME

# 1997-98 BASEBALL STATISTICS...

PLAYER	AVG	GP/GS	AB	R	H	2B	3B	HR	RBI	TB	SLG%	BB	HP	SO	OB%
Tommy Ayala	.359	48-47	153	47	55	7	0	0	16	62	.405	29	9	33	.482
Raul DeCastro	.358	50-49	162	29	58	17	1	9	42	104	.642	31	5	19	.470
Charlie Vaughn	.346	49-44	136	41	47	9	2	6	33	78	.574	25	9	39	.474
Tommy Molina	.326	46-42	141	36	46	10	0	3	19	65	.461	17	7	15	.417
Charles Cerrato	.323	38-23	99	12	32	2	0	1	18	37	.374	2	2	24	.346
Bryan Needle	.319	15-15	47	7	15	0	0	1	10	18	.383	3	0	5	.360
Ben Prill	.308	48-48	159	19	49	14	1	7	47	86	.541	16	9	21	.394
Jerry Simmons	.303	32-31	109	20	33	2	1	0	13	37	.339	10	5	7	.387
Chris Villano	.297	51-50	172	32	51	12	1	3	39	74	.430	24	1	30	.376
Glenn Mackie	.263	16-4	19	2	5	1	0	0	3	6	.316	6	1	6	.462
Mark Groeneveld	.237	48-43	139	25	33	9	2	1	15	49	.353	24	2	32	.358
Norberto Lopez	.235	32-26	85	3	20	5	0	0	14	25	.294	14	2	18	.343
David Mamone	.217	42-10	46	24	10	3	0	2	8	19	.413	3	1	10	.275
Jim Birch	.200	37-16	55	5	11	1	0	0	3	12	.218	8	0	5	.297
Matt Cleveland	.184	22-11	38	9	7	1	0	0	1	8	.211	5	2	13	.311
Jamie Galimidi	.167	6-0	6	0	1	1	0	0	0	2	.333	0	0	1	.167
Angel Nieves	.000	21-1	17	9	0	0	0	0	1	0	.000	1	1	4	.105
Felipe Suarez	.000	3-2	1	0	0	0	0	0	0	0	.000	0	0	0	.000
John Hassel	.000	2-0	1	1	0	0	0	0	0	0	.000	0	0	1	.000
NSU TOTALS	.298	51-51	1585	321	473	94	8	33	282	682	.430	218	56	283	.397
OPPONENTS	.290	51-51	1645	352	477	79	13	47	320	723	.440	240	45	344	.391

## FIELDING

PLAYER	C	PO	A	E	FLD%	DP	SBA	CSB	SB%	PB	CI
Chris Villano	85	79	6	0	1.000	1	0	0	—	0	0
Felipe Suarez	31	11	20	0	1.000	0	27	7	.794	0	0
Todd Gittleman	14	4	10	0	1.000	0	11	5	.688	0	0
Angel Nieves	10	10	0	0	1.000	0	0	0	—	0	0
Blake Paynter	10	3	7	0	1.000	0	8	2	.800	0	0
Jamie Galimidi	5	4	1	0	1.000	0	0	0	—	1	0
Andy Wintle	1	0	1	0	1.000	0	1	0	1.000	0	0
Norberto Lopez	200	178	20	2	.990	0	33	11	.750	7	0
Ben Prill	200	169	28	3	.985	1	45	14	.763	10	0
Tommy Ayala	104	97	5	2	.981	2	0	0	—	0	0
Raul DeCastro	352	322	21	9	.974	33	0	0	—	0	0
Mark Groeneveld	92	85	2	5	.946	1	0	0	—	0	0
Tommy Molina	105	52	47	6	.943	13	0	0	—	0	0
Matt Bennett	16	5	10	1	.938	0	20	5	.800	0	0
Charlie Vaughn	89	34	48	7	.921	3	0	0	—	0	0
Charles Cerrato	63	29	29	5	.921	7	0	0	—	0	0
David Mamone	40	24	12	4	.900	6	0	0	—	0	0
Joe Giummule	10	2	7	1	.900	2	4	2	.667	0	0
Bryan Needle	58	20	32	6	.897	8	0	1	.000	0	0
Jim Birch	76	33	35	8	.895	3	6	3	.667	0	0
Jerry Simmons	125	43	66	16	.872	17	0	0	—	0	0
Matt Cleveland	42	12	21	9	.786	5	0	0	—	0	0
Glenn Mackie	6	2	1	3	.500	0	0	0	—	0	0
John Hassel	0	0	0	0	.000	0	0	0	—	0	0
Shannon Scalzi	0	0	0	0	.000	0	1	1	.500	0	0
NSU TOTALS	1734	1218	429	87	.950	39	78	26	.750	18	0
OPPONENTS	1792	1205	512	75	.958	37	58	16	.784	16	1

# 1997-98 BASEBALL STATISTICS...

## PITCHING

PLAYER	ERA	W-L	APP	GS	CG	SV	IP	H	R	ER	BB	SO	WP	HB	BK
John Hassel	0.00	0-0	1	0	0	0	0.1	0	1	0	2	1	0	0	0
Felipe Suarez	2.72	7-5	13	13	10	0	102.2	94	44	31	28	126	3	7	1
Jim Birch	2.93	4-0	9	1	0	1	30.2	28	15	10	18	32	3	2	0
Matt Bennett	4.95	5-4	11	11	6	0	67.1	86	48	37	29	40	4	1	1
Blake Paynter	6.61	2-3	13	6	1	0	49.0	56	51	36	41	40	10	7	0
Joe Giummule	6.83	3-3	13	7	2	1	55.1	66	48	42	21	27	5	12	2
Todd Gittleman	8.04	5-5	15	11	2	1	62.2	65	66	56	64	53	16	10	2
Bryan Needle	12.95	0-3	9	0	0	0	24.1	55	41	35	10	13	2	4	0
Andy Wintle	21.60	0-0	5	0	0	0	5.0	13	13	12	8	2	1	2	0
Chris Villano	21.60	0-0	2	0	0	0	1.2	4	5	4	1	0	0	0	0
Shannon Scalzi	21.86	0-2	6	2	0	0	7.0	10	20	17	18	10	1	0	0
NSU TOTALS	6.21	26-25	51	51	21	3	406.0	477	352	280	240	344	45	45	6
OPPONENTS	5.85	25-26	51	51	11	5	401.2	473	321	261	218	283	46	56	2



# BASEBALL RECORDS...

## ALL-TIME ROSTER

Abbatiello, Robert	1992
Albert, Luke	1999-
Anschuetz, Ryan	1996-97
Ayala, Tommy	1998-
Bees, Randy	1988-91
Bello, Rolando	1999-
Benedon, Seth	1999-
Bennett, Matt	1997-98
Birch, Jim	1997-
Birchler, Scott	1992-93
Bray, Chris	1989
Breen, John	1991-92
Buoni, Rick	1993
Byers, Bryan	1990
Calvi, Mark	1991
Cancel, Robert	1992-95
Candelaria, Ramon	1993
Caruso, Steve	1990-91
Cerrato, Charles	1997-
Chismar, Mike	1994-95
Cleveland, Matt	1998-
Colantuoni, Ray	1990
Collins, Larry	1995-96
Cronin, Mike	1995
Cuadro, Jose "Mickey"	1997
D'Agostino, Ron	1991-92
Dall, Sean	1992-93
DeCastro, Raul	1997-98
Dedos, Eddy	1994-95
Delaosa, Paul	1994-95
Deluca, Mario	1996-97
Deutschman, Bob	1988-91
DiPiero, Anthony	1999-
Donahue, Billy	1994
Donahue, Brendan	1994
Donaldson, Ed	1990-92
Dong, Tommy	1993-94
Dunham, Jay	1990
Elisco, Jona	1999-
Engle, James	1999-
Espinet, Edwin	1999-
Fadoul, Charlie	1994-95
Ferguson, Tim	1993-94
Frink, Bryan	1998
Galimidi, Jamie	1998
Garcia, Richard	1999-
Gardner, Doug	1995
Gates, David	1996-97
Gerity, Brian	1994-97
Gittleman, Todd	1998-
Giovinco, Joe	1990-91
Giummule, Joe	1997-
Golinski, Joe	1993
Grants, Dennis	1991-93
Greco, James	1990
Groeneveld, Mark	1995-97
Harvey, Steve	1990
Hassel, John	1996-98
Horen, Gary	1995-96
Iannarone, Tom	1990
Imposimato, Sal	1996
Kelly, Vince	1990-92
Knierim, David	1991-93
Kraus, Todd	1992
Laethem, Don	1994-95
Lanza, Brandon	1993-94
Lee, Tommy	1993-94
Liese, Chris	1998
Lopez, Norberto	1998-
Lopez, Raybel	1991-92
Love, Claude	1993-97
Machacon, Donald	1995-96
Mackie, Ed	1991-92
Mackie, Glenn	1996-98
Mamone, Dave	1998-
Mathis, Todd	1991-92
Mckeone, Tim	1993
McNulty, Al	1993
Miller, Joe	1992-95
Molina, Tommy	1998-
Moore, Gary	1992-93
Munoz, Guillermo	1990-91
Nash, Ryan	1992-95
Needle, Bryan	1998-
Nichols, Shaughn	1996-97
Nieves, Angel	1998-
Norris, Bryan	1995-97
Nugent, Patrick	1999-
Othon, Alex	1992-95
Palumbo, Rich	1991-92
Paynter, Blake	1998-
Peyton, Kevin	1995-96
Phillips, Eric	1990-91
Portman, Jason	1998
Prieto, Tony	1994-95
Pretz, Ryan	1999-
Prill, Ben	1996-
Redmond, Mike	1997
Retzko, Peter	1993-94
Richard, Scott	1992-93
Rizzuto, Mark	1990-91
Rodriguez, Ray	1996
Rozzo, Dan	1991
Rozzo, Steve	1990-91
Sachs, Robert	1993
Scalzi, Shannon	1997-
Scharfman, Kevin	1999-
Scott, Edward	1992
Scott, Kevin	1995-96
Sekely, Emerit	1993
Sessions, Jimmy	1999-
Sheridan, Tom	1988-91
Simmons, Jerry	1997-98
Smith, Craig	1990-92
Sponder, Jeff	1994-95
Starke, Drew	1999-
Suarez, Felipe	1996-98
Taylor, Frank	1988-91
Thomas, Stephen	1999-

# BASEBALL RECORDS CONTINUED...

## ALL-TIME ROSTER, CONT...

Thompson, Frank	1992
Todd, Chris	1991-92
Topliff, Todd	1994
Torres, Michael	1998-
Utariello, Anthony	1993
VanValkenburg, Joe	1988-91
Vaughn, Charles	1997-
Veronesi, Matt	1997
Vetter, Joe	1988-90
Villano, Chris	1988-
Wallace, Matt	1995
Wintle, Andy	1996-98
Wolfer, Ricky	1995-97
Zapata, Chris	1988-91
Zitnick, Dan	1996-97

## ALL-TIME RECORDS VS OPPONENTS

Air Force	1-1
Allegheny (PA)	3-2
Army	1-0
Baker University	1-0
Barry University	4-14-1
Baruch College	1-0
Bates College	1-0
Boston University	1-0
Bowdoin	1-1
Brewton-Parker College	0-2
Brown University	2-0
Central Connecticut	0-1
Columbia University	1-0
Concordia	5-1
Creighton, University of	1-0
Detroit, University of	1-0
Dominican College	6-2
Drew University	2-0
East Connecticut State	2-2
East Stroudsburg University	2-2
Eckerd College	12-4
Edward Waters College	12-2
Embry-Riddle University	17-12
Erskine College	1-0
Faulkner College	2-1
Flagler College	27-13
Florida Atlantic University	5-6-1
Florida Memorial College	32-3
Florida Southern College	2-6
Florida Tech	11-10
Fort Lauderdale College	2-0
Geneva College	2-0
Georgia Southwest	1-0
Huntington College	2-0
Indiana Wesleyan	1-0
Iona College	2-0
Jersey City State	4-2
John Jay College	3-1
Kennesaw State University	2-3
Lewis (IL)	1-2
Lowell University	2-1

Lynn University	21-18
Madonna	1-0
Mayville State University	1-0
Mercy College	2-0
Miami, University of	0-4
Michigan State	1-0
Monmouth College	5-3
Montclair State University	2-0
Navy	1-1
New Jersey, College of	1-0
New Jersey Tech	3-1
New Platz, SUNY	1-0
Northeastern University	2-0
North Dakota State	1-0
North Florida, University of	5-19
Northwood University	16-7
Old Westbury State	1-0
Pace University	1-0
Palm Beach Atlantic College	26-10-1
Pennsylvania University	0-1
Princeton University	1-0
Providence University	2-0
Quinnipiac College	1-1
Ramapo College	3-1
Ripon College	1-0
Rollins College	4-3
Rowan (NJ)	2-0
Southern Connecticut	1-1
Southern Maine	4-0
Spring Arbor College	11-1
St. Ambrose University	2-0
St. Leo College	0-1
St. Thomas University	15-25
Tampa, University of	1-5
Trenton State University	6-3
Trinity International University	11-0
Upsala College	1-0
U.S. Coast Guard	2-1
Villanova University	1-0
Walsh University	1-0
Warner Southern College	24-4
Webber College	13-3
William Patterson	1-0
Wesleyan University (CT)	2-3
OVERALL	385-216-3

## YEAR-BY-YEAR RESULTS

YEAR	W-L-T	COACH
1988	18-32-0	Sonny Hansley
1989	36-19-1	Sonny Hansley
1990	33-20-1	Sonny Hansley
1991	41-15-0	Sonny Hansley
1992	42-14-0	Sonny Hansley
1993	42-14-0	Sonny Hansley
1994	43-12-0	Sonny Hansley
1995	40-15-0	Sonny Hansley
1996	32-21-1	Sonny Hansley
1997	43-18-0	Sonny Hansley
1998	26-25-0	Sonny Hansley

# BASEBALL RECORDS CONTINUED...

TOTAL ..... 385-216-3

## COACH RECORDS

YEAR ..... COACH ..... W-L-T  
1988- ..... Hansley ..... 385-216-3

## POST-SEASON SUCCESSES

1994 ..... FSC regular season champs  
1995 ..... FSC tournament champions  
1997 ..... FSC regular season champs, SE Region 2<sup>nd</sup>

## INDIVIDUAL RECORDS/HITTING

### AT-BATS

Career ..... 824, Claude Love, 1993-97  
Season ..... 226, Claude Love, 1997

### BATTING AVERAGE

Career ..... .442, Gary Horen, 1995-96  
Season ..... .447, Gary Horen, 1996

### GAMES PLAYED

Career ..... 226, Claude Love, 1993-97  
Season ..... 61, Jose "Mickey" Cuadro, 1997  
..... 61, Claude Love, 1997  
..... 61, Brian Norris, 1997

### HITS

Career ..... 299, Claude Love, 1993-97  
Season ..... 82, Claude Love, 1997  
..... 82, Tony Prieto, 1995  
..... 82, Claude Love, 1994  
..... 82, Rich Palumbo, 1992

### DOUBLES

Career ..... 63, Claude Love, 1993-97  
Season ..... 24, Guillermo Munoz, 1991

### TRIPLES

Career ..... 25, Eric Phillips, 1988-91  
Season ..... 10, Eric Phillips, 1990

### HOME RUNS

Career ..... 27, Ed Mackie, 1991-93  
Season ..... 17, Ed Mackie, 1993

### RUNS BATTED IN

Career ..... 216, Claude Love, 1993-97  
Season ..... 80, Rich Palumbo, 1992

### RUNS SCORED

Career ..... 233, Eric Phillips, 1988-91  
Season ..... 73, Rich Palumbo, 1992

### SLUGGING PERCENTAGE

Career ..... .722, Rich Palumbo, 1991-92  
Season ..... .784, Rich Palumbo, 1992

### STOLEN BASES

Career ..... 92, Eric Phillips, 1988-91

Season ..... 38, Chris Todd, 1992

## TOTAL BASES

Career ..... 477, Claude Love, 1993-97  
Season ..... 152, Rich Palumbo, 1992

## HIT BY PITCH

Career ..... 54, Brian Norris, 1995-97  
Season ..... 22, Brian Norris, 1997

## WALKS

Career ..... 164, Craig Smith, 1989-92  
Season ..... 55, Chris Todd, 1991

## STRIKEOUTS

Career ..... 154, Ed Mackie, 1991-93  
Season ..... 64, Ed Mackie, 1991

## SACRIFICE HITS

Career ..... 27, Charlie Fadoul, 1994-95  
Season ..... 14, Charlie Fadoul, 1994

## INDIVIDUAL RECORDS/FIELDING

### PUTOUTS

Career ..... 897, Joe Miller, 1992-95  
Season ..... 466, Gary Horen, 1996

### ASSISTS

Career ..... 314, Brian Norris, 1995-97  
Season ..... 162, Craig Smith, 1992

### ERRORS

Career ..... 46, Ed Mackie, 1992-93  
Season ..... 25, Ed Mackie, 1993

## INDIVIDUAL RECORDS/PITCHING

### APPEARANCES

Career ..... 96, Robert Cancel, 1992-95  
Season ..... 31, Steve Harvey, 1990

### STARTS

Career ..... 63, Vince Kelly, 1989-92  
Season ..... 18, Vince Kelly, 1990

### COMPLETE GAMES

Career ..... 17, Donovan Todd, 1993-94  
Season ..... 10, Felipe Suarez, 1998  
..... 10, Donovan Todd, 1994

### VICTORIES

Career ..... 36, Vince Kelly, 1989-92  
Season ..... 13, Vince Kelly, 1991

### LOSSES

Career ..... 20, Vince Kelly, 1989-92  
Season ..... 9, Bob Deutschman, 1988

### SAVES

Career ..... 33, Robert Cancel, 1992-95

# BASEBALL RECORDS CONTINUED...

Season ..... 16, John Hassel, 1997

## SHUTOUTS

Career ..... 5, Donovan Todd, 1993-94  
 ..... 5, Vince Kelly, 1989-92  
 Season ..... 3, Tommy Lee, 1994  
 ..... 3, Donovan Todd, 1994  
 ..... 3, Vince Kelly, 1991

## INNINGS PITCHED

Career ..... 426.0, Vince Kelly, 1989-92  
 Season ..... 124.0, Felipe Suarez, 1997

## FEWEST RUNS ALLOWED

Season ..... 10 R (29.1 IP), Robert Cancel, 1993

## MOST RUNS ALLOWED

Career ..... 278, Joe Van Valkenburg, 1988-91  
 Season ..... 90 R (103.0 IP), Bob Deutschman, 1988  
 ..... 90 R (93.0 IP), Joe Van Valkenburg, 1988

## STRIKEOUTS

Career ..... 353, Vince Kelly, 1989-92  
 Season ..... 124, Robert Cancel, 1995

## FEWEST WALKS ALLOWED

Career ..... 24, Don Laethem, 1994-95  
 Season ..... 12, Al McNutty, 1993

## HITS ALLOWED

Career ..... 345, Vince Kelly, 1989-92  
 Season ..... 141, Bob Deutschman, 1988

## HIT BATTERS

Career ..... 31, Vince Kelly, 1989-92  
 Season ..... 15, Vince Kelly, 1992

## WILD PITCHES

Career ..... 16, Mike Chismar, 1994-95  
 Season ..... 16, Todd Gittleman, 1998

## LOWEST EARNED RUN AVERAGE

Career ..... 2.14, Paul De La Osa, 1994-95  
 Season ..... 1.57, Paul De La Osa, 1994

## TEAM OVERALL RECORDS

**MOST VICTORIES** ..... 43, 1997  
 ..... 43, 1994

**MOST LOSSES** ..... 32, 1988

**BEST WON-LOSS RECORD** ..... 43-12, 1994

**MOST GAMES** ..... 61, 1997

**TEAM BATTING AVERAGE** ..... .330 (56 games), 1994

**HITS** ..... 608 (56 games), 1992

**DOUBLES** ..... 116 (56 games), 1992  
 ..... 116 (56 games), 1991

**TRIPLES** ..... 41 (56 games), 1992

**HOME RUNS** ..... 63 (56 games), 1993

**RUNS BATTED IN** ..... 473 (56 games), 1992

**TOTAL BASES** ..... 950 (56 games), 1992

**SLUGGING PERCENTAGE** ..... .513, 1992

**STOLEN BASES** ..... 159/177, 1992

**SACRIFICE HITS** ..... 78 (55 games), 1994

**HIT BATSMEN** ..... 76, 1997

## TEAM PITCHING

**COMPLETE GAMES** ..... 26, 1995

**INNINGS PITCHED** ..... 499.2, 1997

**RUNS ALLOWED-FEWEST** ..... 194, 1994

**RUNS ALLOWED-MOST** ..... 428, 1988

**EARNED RUNS-FEWEST** ..... 134, 1994

**STRIKEOUTS** ..... 436, 1997

**FEWEST WALKS ALLOWED** ..... 143, 1994

**MOST WALKS ALLOWED** ..... 297, 1988

**FEWEST HITS ALLOWED** ..... 363, 1993

**MOST HITS ALLOWED** ..... 523, 1988

**WILD PITCHES** ..... 45, 1988

**SHUTOUTS** ..... 12, 1994

**LOWEST EARNED RUN AVERAGE** ..... 2.43, 1994

**HIT BATSMEN** ..... 45, 1992

## TEAM FIELDING

**PUTOUTS** ..... 1499/61 games, 1997

**ASSISTS** ..... 614, 1997

**ERRORS** ..... 97, 1993

**DOUBLE PLAYS** ..... 41, 1996

**FIELDING AVERAGE** ..... .957, 1997



# About the Florida Sun Conference...

The Florida Sun Conference (FSC) is one of the newest intercollegiate athletic conferences in the National Association of Intercollegiate Athletics (NAIA). The conference consists of nine colleges and universities and spans across the entire state of Florida.

The Florida Sun Conference is comprised of Embry-Riddle Aeronautical University, Flagler College, Florida Memorial College, Northwood University, Nova Southeastern University, Palm Beach Atlantic College, St. Thomas University, Warner Southern College and Webber College.

The institutions in the conference believe in strong educational commitment combined with balanced athletic competition. In just seven years of existence, four different FSC institutions have received the Conference All Sports trophy signifying achievement in their overall athletic program--with Nova Southeastern University leading the way with three in a row, and four in the last five years.



Originally formed in March of 1990 as the Florida Intercollegiate Athletic Conference, the FSC was established as a conference for small independent colleges and universities within the NAIA. The conference name was changed in 1992 to its current name.

The league sponsors championships in the following men's sports: baseball, basketball, cross country, golf, soccer and tennis. The FSC also sponsors championships in the following women's sports: basketball, cross country, soccer, softball, tennis and volleyball.

In its six short years of existence, the FSC has quickly established post-season tradition with automatic NAIA Tournament bids to the conference champion in baseball, men's basketball, volleyball and soccer. Also, Florida Sun Conference teams are frequently found in the NAIA Top 25 National Polls in all sports. Individually speaking, athletes from the FSC have proven themselves worthy of national recognition year after year.

In addition to recognizing outstanding achievements on the playing fields in all 12 sports, the conference also recognizes achievement in the classroom. Each year an Academic All-Florida Sun Conference Team is selected. Last year, 102 athletes throughout the nine conference institutions received the award. The Athletic Directors of the nine member institutions serve as the Florida Sun Conference Board of Directors.

# About the NAIA...

The National Association of Intercollegiate Athletics (NAIA) is a completely autonomous association currently administering intercollegiate athletic programs to approximately 400 fully-accredited colleges and universities, more than 30 percent of all four-year collegiate athletic programs in the United States. The Association has member colleges in 47 of the 50 states and in British Columbia. The organization is responsibly governed by a 32-member Council of Presidents.



The Association administers 24 separate championships in 13 sports. Approximately 66,000 student-athletes participate annually in NAIA-sanctioned varsity athletic programs.

The National Association of Intercollegiate Athletics stands prepared to administer programs and championships which provide "education through athletics" for each and every NAIA student-athlete. The future of 66,000 young people is too important to handle any other way.


National Association of Intercollegiate Athletics  
6120 South Yale Ave., Suite 1450  
Tulsa, OK 74136-4223  
(918) 494-8828

# The Official Supplier for Nova Southeastern University's Department of Athletics



**BASEBALL**  
**BASKETBALL**  
**CROSS COUNTRY**  
**GOLF**  
**SOCCER**  
**SOFTBALL**  
**TENNIS**  
**VOLLEYBALL**





**NOVA**  
**SOUTHEASTERN**  
UNIVERSITY

DEPARTMENT OF ATHLETICS  
3301 College Avenue  
Fort Lauderdale, Florida 33314-7796