

NOVA SOUTHEASTERN UNIVERSITY



***Baseball  
1997-98***











# About Nova Southeastern University...

Nova Southeastern University is South Florida's multidisciplinary center devoted to providing educational programs of distinction from prekindergarten through the doctoral level. From its beginning in 1964, NSU has distinguished itself through innovation, offering traditional and nontraditional programs and promoting research into social and human problems of immediate and long-range concern.

The university includes academic centers in allied health, business and entrepreneurship, computer and information sciences, dental medicine, education, family education, law, medical sciences, oceanography, optometry, osteopathic medicine, pharmacy, psychology, social and systemic studies, and undergraduate studies.

The Main Campus is located on 232 acres in suburban Fort Lauderdale and features the Farquhar Center for Undergraduate Studies, Health Professions Division, Center for Psychological Studies, Shepard Broad Law Center, and University School. The East



Campus, near downtown Fort Lauderdale, houses our School of Business and Entrepreneurship, School of Computer and Information Sciences, and the School of Social and Systemic Studies. The Oceanographic Center is located on 10 acres adjacent to Port Everglades. And the Fischler Center for the Advancement of Education is located at the North Miami Beach Campus. NSU also offers classes at the Coral Springs Campus, in locations across Florida, and in 21 states and several foreign countries.

Operating on an annual budget of approximately \$187 million, NSU is the largest private, independent institution of higher education in Florida, based on Fall Term enrollment, and has produced more than 50,000 alumni.

*Nova Southeastern University admits students of any race, color, sex, age, nondisqualifying disability, religion or creed, or national or ethnic origin to all the rights, privileges, programs, and activities generally accorded or made available to students at the school, and does not discriminate in administration of its educational policies, admissions policies, scholarship and loan programs, and athletic and other school-administered programs.*

*Nova Southeastern University is accredited by the Commission on Colleges of the Southern Association of Colleges and Schools (1866 Southern Lane, Decatur, Georgia 30033-4097; Telephone number 404-679-4501) to award bachelor's, master's, educational specialist, and doctoral degrees.*



## About Broward County, about Fort Lauderdale...

Twenty-three miles of wide sandy beaches stretch enticingly along calm, azure Atlantic waters--from Palm Beach in the north to Miami in the south. More than 300 miles of navigable inland waterways, part of the Intracoastal system, wind through palatial estates, citrus groves and exotic Everglades--beckoning boats of all sizes and shapes. And there are plenty of attractions to tempt landlubbers as well.

This is Greater Fort Lauderdale. For an area covering 1,196 square miles--two thirds of which lie in the Everglades--and a population of 1.2 million, the diversity of attractions and activities on and off the beach in Broward County is surprising. It's no wonder that sun seekers from all over the world come here to play, relax,, shop, dine, sportfish, dive, boat and sightsee. It's also no wonder that Broward County is one of the fastest growing residential areas in the country--visitors tend to like it so much, they move in.

Broward's climate is tropical with an average year-round temperature of 77 degrees and 3,000 hours of sunshine. Winter temperatures average a mean of 66 degrees; summer, a mean of 84 degrees. January is the coolest month of the year and August is the warmest. The heaviest rainfalls occur during August and September.

As for sports, South Florida has it all. Besides the natural abundance of water sports, boating and fishing, there are numerous inland activities, including:

golf, with more than 50 courses in Broward ranging from a par 3 to the most challenging courses; tennis, with more than 550 public and private tennis courts throughout Broward County; and parimutuels, which includes greyhound racing at Hollywood Greyhound Track, harness racing at Pompano Park Harness Track, jai-alai at Dania Jai-Alia, and thoroughbred racing at Gulfstream Park.

Fort Lauderdale is also just minutes from some of the nation's top professional sports attractions. Immediately south of Broward County lies Pro Player Stadium, home of the Miami Dolphins and Florida Marlins. The Miami Heat and Florida Panthers also play just 20 minutes south of Fort Lauderdale in the Miami Arena. The Panthers, however, will be leaving Miami for a new Broward County arena in time for their 1998-99 season. South Florida is also home to the Orange Bowl and CARQUEST Bowl, the Lipton Tennis Tournament, and The Honda Classic and Doral-Ryder Open golf tournaments.

Numerous attractions also abound, such as Butterfly World, Everglades Holiday Park, Flamingo Gardens, the Goodyear Blimp base, Grand Prix Race-O-Rama, and Sawgrass Recreation Park. These, along with the area's performing arts and shopping facilities, make Fort Lauderdale the perfect place to reside and study.



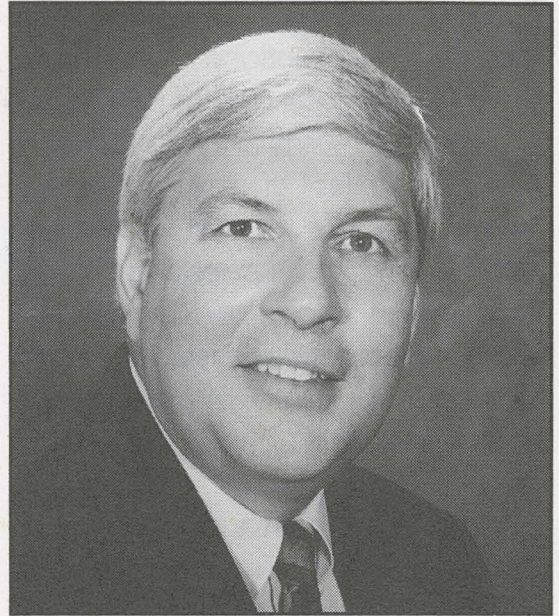
# Meet the Director of Athletics, Corey Johnson...

Two years, two Florida Sun Conference All-Sports Trophies. That is the impact that Corey Johnson has had on the Nova Southeastern University department of athletics since his arrival in July of 1995. From that moment, Johnson has stressed not only the excellence in education that NSU athletes are known for, but also excellence on the field. Nova Southeastern University teams have continually responded to his challenges, as the Knights have nine first place finishes and three team national tournament appearances in various sports in just two seasons under Johnson.

A resident of Plantation, Johnson has worked in all facets of the athletics world, from being a teacher and intramural director in South Dakota, to being a head football coach in Wisconsin, to being an NCAA Division I assistant football coach at the University of Iowa and University of California at Berkeley. Johnson has seen it all in the days which led up to him accepting his first full-time collegiate administrative position as Associate Athletics Director at the University of Miami in 1983, and every day after as Director of Athletics with two other NCAA Division I programs.

It was at the University of Miami where Johnson first began making a name for himself as one of the top athletic administrators in the country. There, he was responsible for NCAA compliance and eligibility, was special projects and tournament coordinator, and was responsible for coordinating the return of Division I basketball. His supervision included 12 non-revenue sports, student-athlete housing, scholarships and financial aid. He was also there to see the university capture national championships in football, baseball and women's golf.

In 1987 he accepted a position with California State University Long Beach as Director of Athletics, Sports and Intramurals. And it was there that he proved his worth, handling a department comprised of 21 varsity and 16 club sports with more than 9,000 intramural participants (the campus had an enrollment of 34,000 students). That position led to his hiring as Director of Athletics at Colorado State University in 1991, where he was responsible for the overall operation of CSU's 16 varsity sports at a campus of 22,000 students.



Johnson departed the collegiate scene in 1994 to be Vice President of Administration and Corporate Advancement for Contemporary Services Corporation, where he worked on such special projects as the Super Bowl and World Cup Soccer. His love for collegiate athletics, however, proved to be too strong, leading to his arrival at Nova Southeastern University.

## *Corey Johnson: Profile*

*1991-94: Director of Athletics, Colorado State University. Responsible for the overall operation of a Division IA women's/men's intercollegiate sports program for a department with nine women's and seven men's teams.*

*1987-91: Director of Athletics, Sports and Intramurals, California State University Long Beach. Responsible for the overall program for a Division IA women's/men's intercollegiate sports program for a department with 21 varsity sports, 16 club sports, and over 9,000 intramural participants.*

*1983-87: Associate Athletics Director, University of Miami...1982-83: State Director of Athletics for Special Olympics, California...1978-82: Assistant football coach, University of California at Berkeley...1976-78: Assistant football coach, University of Iowa...1973-76: Teacher, Athletics Director, Chair of the Department of Physical Education, head football coach, Lancaster High School, Lancaster, Wis.*



# Meet the Department of Athletics support staff...

## BRIAN ANDERSON

Athletic Trainer

A relative newcomer to the Knights, arriving to the staff in October 1997... Received bachelor's degree in human performance and recreation from University of Southern Mississippi, where he staffed intercollegiate football, baseball, basketball, tennis, golf, cross country and track and field... Certifications include CPE and First Aid, NATA-BOC Certification.



## GALE LANG

Academic Coordinator

First began working with the department of athletics at the end of the 1996-97 athletic season... Monitors academic performances of all athletes, and serves as liaison to coaches, parents, and the Athletic Academic Advisor... Resides in Hollywood... Graduated in 1975 from City College of New York with a B.S. in Education.



## THERESA BELESKY

Athletic Trainer

Joined the Knights' staff in August, 1996... Directly assists Head Trainer Hal Henderson in all aspects of the NSU Training Room... Earned bachelor's from Rowan University (NJ) in Health and Physical Education, master's from Edinboro University of Pennsylvania in Rehabilitation Counseling... Resides in Hollywood.



## BEVERLEY WELKER

Assistant to the Director

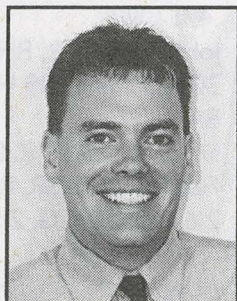
Came on board the NSU staff in January 1997... Responsible for managing the Department of Athletics and directly assisting the director of athletics Corey Johnson... Enjoys golfing, square dancing... Married to Daniel... Resides in Hollywood.



## PATRICK FEELY

Director of Operations

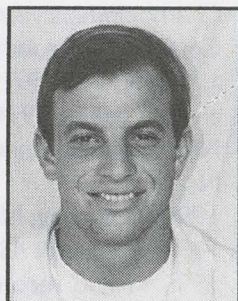
Joined the NSU family in August, 1996... Responsible for the scheduling and usage of all NSU fields... Deals directly with outside sources, including the Miami Dolphins, Major League Soccer and Umbro... Earned B.S. from Rochester Institute of Technology in Hospitality Management, Master's from Kent State University in Sport Administration... Married to Chris... Resides in Hollywood.



## RAFI WYNN

Business Manager

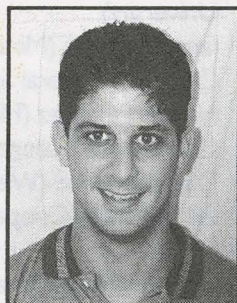
Joined the Knights in August 1996... Responsible for the athletic budget, team travel arrangements and all business operations... Also assistant basketball coach... Has bachelor's degree in economics from Hobart College... Presently studying to become certified public accountant... Resides in Plantation.



## MIKE LADERMAN

Sports Information Director

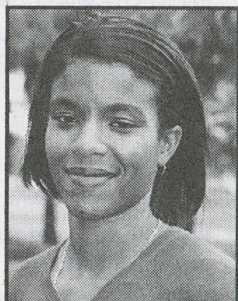
Joined the staff in August 1995 after a nine-year sports writing career... Captured nine Florida Press Association Awards in six years of eligibility... Also Assistant Sports Information Director/South Florida Olympic Village in 1996, Director of Media Relations for 1996 CARQUEST Bowl... Resides in Plantation with wife, Kim.



## BEVERLY YOUNG

Athlete Services

A former Nova Southeastern University women's soccer standout who joined the NSU staff in October, 1997... Graduated from NSU with bachelor's degree in Business Administration in 1997... Captain of Knights both seasons... Named All-American, Florida Sun Conference Player of the Year... An auditor with Schlumberger/Anadrill in Sugarland, TX.





# 1997-98 Nova Southeastern University fact sheet...

## GENERAL INFORMATION

Name of School: Nova Southeastern University  
Location: 3301 College Ave., Ft. Lauderdale, FL 33314  
Founded: 1964  
Undergraduate Enrollment: 2,771  
Nickname: Knights  
School colors: Navy blue, white, gold trim  
Home field: NSU Baseball Complex (500)  
Affiliation: National Association of Intercollegiate Athletics  
Conference: Florida Sun  
President: Ray Ferrero  
Director of Athletics: Corey Johnson  
Sports Information Director: Mike Laderman  
Sports Information Phone: (954) 262-8261  
Trainer: Brian Anderson  
Trainer: Theresa Belesky  
Faculty Athletic Rep: Dr. Mark Cavanaugh  
Athletic Department Phone: (954) 262-8250  
Athletic Department Fax: (954) 262-3926

## KNIGHTS BASEBALL

First year of baseball: 1987-88  
All-time record: 359-191-3  
Championships/years won: 3 (2 Florida Sun Conference regular season championships--1993-94, 1996-97; 1 FSC Tournament championship--1994-95)  
NAIA National Championship Appearances: None  
1996-97 ranking: NAIA No. 12 (278 points)  
1996-97 record: 43-18  
1996-97 FSC record/finish: 19-5/First  
Last year's playoff record: 6-4 (Lost to Brewton-Parker, 7-2, in NAIA Southeast Region championship game)  
Starters (position players) returning: 4  
Starters (position players) lost: 4  
Pitchers returning: 5  
Pitchers lost: 3

## COACHING STAFF

Head coach: Sonny Hansley (11th season)  
Alma mater/year: American International College/1969  
Record at NSU: 359-191-3 in 10 seasons  
Career record: Same  
Office phone: (954) 262-8259  
Best time to reach Coach Hansley: 9 a.m.-1 p.m.  
Assistant coaches: Tom Hysell (1st season), Robert Perez (1st season), Kevin Peyton (2nd

season)

## RETURNING POSITION PLAYERS/1996-97 STATISTICS

Jim Birch (SO, IF): 30 GP, 20 GS, .286 BA, 10 RBI, .392 OB%, .985 FLD%  
Charles Cerrato (SO, 2B): 46 GP, 23 GS, .315 BA, 7 2B, 1 3B, 2 HR, 22 RBI, .483 SLG%  
Raul DeCastro (JR, 1B): 52 GP, 40 GS, .264 BA, 6 2B, 3 3B, 5 HR, 26 RBI, .443 SLG%, .975 FLD%  
Mark Groeneveld (SR, RF): 60 GP, 58 GS, .288 BA, 7 2B, 5 HR, 34 RBI, .399 SLG%, .418 OB%  
Glenn Mackie (JR, 3B): 18 GP, 4 RBI, 1.000 FLD%  
Ben Prill (JR, C): 15 GP, 13 GS, 1.000 FLD%  
Jerry Simmons (SR, SS): 55 GP, 53 GS, .271 BA, 7 2B, 2 3B, 1 HR, 19 RBI, .367 OB%  
Charlie Vaughn (SO, LF): 60 GP, 56 GS, .287 BA, 11 2B, 4 3B, 1 HR, 31 RBI, .409 SLG%, 11 SB

## RETURNING PITCHERS/1996-97 STATISTICS

Matt Bennett (SR, RHP): 21 APP, 39.2 IP, 2-3, 19 BB, 21 SO  
Joe Giummule (JR, RHP): Did not pitch. .250 BA, .471 OB%  
John Hassel (SR, RHP): 7-0, 2.37 ERA, 16 saves, 30 APP, 57 IP, 39 H, 32 BB, 62 SO, .194 OPP BA  
Shannon Scalzi (JR, LHP): 11 APP, 22 IP, 17 SO  
Felipe Suarez (SR, RHP): 16 APP, 124 IP, 11-5, 2.61 ERA, 7 CG, 2 SH, 98 H, 29 BB, 114 SO, .217 OPP BA  
Andy Wintle (SR, RHP): 8 APP, 4.2 IP, 4 SO

## NEWCOMERS/POSITION PLAYERS

Tom Ayala (N. Lauderdale, FL, Coconut Creek High)  
Matt Cleveland (Ft. Lauderdale, FL, Seton Hall University)  
Jamie Galimidi (Miramar, FL, McArthur High)  
Chris Liese (Coral Springs, FL, Stony Brook Prep)  
Norberto Lopez (Hialeah, FL, Broward Community College)  
Dave Mamone (Wellington, FL, Upper Iowa)  
Bill McHugh (Cooper City, FL, Cooper City High)  
Tommy Molina (Miami, FL, Miami-Dade Community College-Kendall)

CONTINUED ON NEXT PAGE



# Just the facts...

CONTINUED FROM PREVIOUS PAGE

Angel Nieves (Davie, FL, Western High)  
Jason Portman (Highland Park, IL, Highland Park High)  
Mike Torres (Ft. Lauderdale, FL, Hollywood Hills High)  
Chris Villano (Davie, FL, Western High)

## NEWCOMERS/PITCHERS

Bryan Frink (N. Lauderdale, FL, Piper High)  
Todd Gittleman (Hollywood, FL, Hollywood Hills High)  
Bryan Needle (Sunrise, FL, Plantation High)  
Blake Paynter (Cooper City, FL, Barry University)

## KEY LOSSES

Ryan Anschuetz, P: 9-4, 2.31 ERA, 104 SO, 105 IP  
Brian Gerity, C: .305 BA, 6 HR, 46 RBI  
Claude Love, CF: .363 BA, 7 HR, 46 RBI  
Brian Norris, 3B: .327 BA, 10 HR, 48 RBI  
Dan Zitnick, P: 7-3, 3.21 ERA, 67 SO, 75.2 IP

## DIRECTIONS TO THE NSU BASEBALL COMPLEX

(From the north or south) Take I-95 or the

Florida Turnpike to I-595 west. Exit at University Drive, turn left (south). Go approximately 1 1/2 miles to SW 30 St., turn left (east). Just past Miami Dolphins Training Facility is 75th Ave.; turn right (south). Baseball field is 2 speed bumps down on right (west) side. If small gravel lot is full, park in either 5-story parking garage just past right field (just southwest of the Dolphins' field) or in parking lot on west side of 75th Ave., 2 speed bumps past baseball field. Team entrance is north gate, alongside right field line. Spectator entrance is north gate only for weekday games, north and east gate for select weekend games.

## ABOUT THE KNIGHTS' NICKNAME

In 1982, the first year of athletics at Nova Southeastern University, a contest open to the general public came up with the "Knights" nickname. Eight people in the area came up with it, yet only one was chosen the winner by pulling their name out of a hat.

This 1997-98 Nova Southeastern University Team Program was compiled, designed and edited by Mike Laderman, Sports Information Director.



**OFFICIAL SUPPLIER FOR NSU BASEBALL**



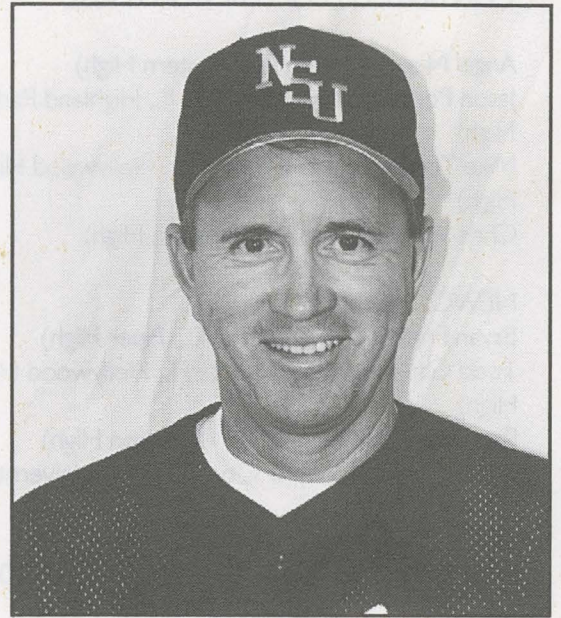
# Meet the Head Coach, Charles "Sonny" Hansley...

The driving force behind the Knights is back yet again for another crack at an NAIA Southeast Region championship.

Charles "Sonny" Hansley heads into his 11th season at the helm of the Nova Southeastern University baseball program, looking to improve on the team's No. 12 NAIA final national ranking, looking to best the Knights' No. 16 pre-season rating, and looking to capture that elusive berth to the NAIA National Championship tournament. He and the Knights came as close as they ever had before, advancing to the Southeast's championship round last season before falling to Brewton-Parker College, 7-2, in Homestead, FL. During that run, Hansley's squad finished 43-18 en route to capturing the University's second Florida Sun Conference regular season championship (and third FSC title overall).

The Knights' baseball program has been all Hansley since Day One. And it has been virtually nothing but success since that same day. Only once has the program had a losing season, that being the first in 1987-88 when they went ??????. Since then, Hansley's squads have built a reputation as some of the better ones in the NAIA--particularly in the 1990's, what with the Knights winning 40-plus games five of the last six seasons.

Born August 1, 1947 in Chicopee, MA, Hansley remained a hometown fixture and graduated from Chicopee High in 1965. He then received his bachelor's degree in 1969 from American International College and his master's from Springfield College in 1976. He arrived at Nova Southeastern University in 1982, accepting the position as the University's first Director of Athletics with the responsibility of building an entire intercollegiate program from scratch. He did, turning it into a 10-team, \$1 million department before resigning from the post in the summer of 1995 to concentrate solely on baseball and camps. Hansley was also the school's first-ever men's basketball coach, holding those reigns before departing to build up the baseball team. He has been named the Florida Sun Conference's Coach of the Year in 1994 and 97, District 7 Coach of the Year in 1994, and District 7 Administrator of the Year for 1992-93.



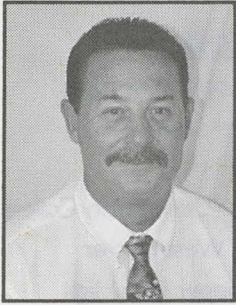
## Sonny Hansley: Profile

*VITAL STATISTICS: Born August 1, 1947, in Chicopee, Mass...Attended Chicopee High School, Class of 1965...American International College, Class of 1969...Master's degree from Springfield College, 1976...Married to Donna for 26 years...Daughter Michelle, 20, attends Nova Southeastern University...Son Kenny, 17, attending Cooper City High School.*

*ATHLETIC PARTICIPATION: Played high school football, basketball, baseball, and college basketball and baseball. Helped Chicopee High School capture three consecutive state baseball championships, and finish second the other year...Participated in two national basketball championship tournaments with American International College, held in Evansville, Indiana, during the 1967-68 and 68-69 seasons.*



## Meet Assistant Coach Tom Hysell...



Former Coconut Creek High School head coach Tom Hysell was named a Nova Southeastern University assistant coach in mid-June 1997.

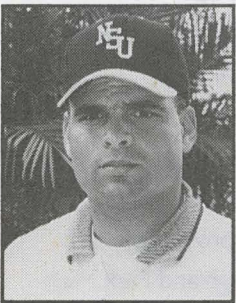
Hysell is a familiar name to South Florida prep baseball aficionados,

coaching the Cougars from 1980-96. There, he captured district titles in 1983, 87, 91, 94 and 95; sub-regional titles in 1994 and 95; regional

championships in 1987, 91 and 94; and was a state semifinalist in 1994. His teams also were ranked in the state's top-10 in 1983, 1986-96.

Under his direction, Coconut Creek also earned national rankings in 1989, 92 and 93. Hysell was also named Broward County's Coach of the Year three times by Ft. Lauderdale's Sun-Sentinel (1983, 84 and 94) and The Herald twice (1983, 84). He was inducted into the Broward County Coaches Hall of Fame in 1994, and was the initial inductee to the City of Coconut Creek's Sports Wall of Fame in 1995.

## Meet Assistant Coach Robert Perez...



Robert Perez enters his first season as assistant coach with the Nova Southeastern University Knights.

Perez's background in athletics--particularly baseball--is quite extensive. In fact, it includes a minor league

stint in the Kansas City Royals' organization, that being when he played Single A ball for the Independent League's Salt Lake City Trappers in

Salt Lake City, UT, from June 1990 to July 1991. He then was a three-sport coach at American Heritage School in Plantation, FL, helping coach the varsity baseball and soccer teams, and the junior varsity football squad, from August 1995 to June 1997. Beginning in June '97, he began working as assistant coach with the Pokers Baseball Club, a club team based out of Coral Springs, FL.

Perez was also an infantryman for the United States Marine Corps from August 1987 to November 1989, being an instructor at the School of Infantry in Parris Island, South Carolina.

## Meet Assistant Coach Kevin Peyton...



A former pitcher for Nova Southeastern University, Kevin Peyton returns for his second season as assistant baseball coach--yet his first as the squad's pitching coach.

Peyton, who graduated from Nova

Southeastern University in 1996 with a bachelor's of science in pre-law, pitched for two seasons under head coach Sonny Hansley (1994-95, 1995-96) before joining the staff in 1996-97. As a junior, he appeared in 10 games (14.0 innings)

and was 1-0 with six strikeouts. His senior year, Peyton made 12 appearances and again went 1-0, recording a solid 2.45 earned run average in 11.0 innings pitched.

A member of the American Baseball Coaches Association, Peyton--who also pitched collegiately at Camden County Community College (Blackwood, NJ) his freshman and sophomore seasons--also coached the Connie Mack Traveling Team (Coral Springs, FL). There, he was head pitching coach, helped with fund raising, and scouted and recruited potential players. Last year, in his first season as coach with the Knights, he was assistant pitching coach under Bob Deutschman, and was first base coach.



# 1997-98 Knights' numerical baseball roster...

## POSITION PLAYERS

<u>NO</u>	<u>NAME</u>	<u>POS</u>	<u>HT</u>	<u>WT</u>	<u>CL</u>	<u>B/T</u>	<u>HOMETOWN/LAST SCHOOL</u>
2	Bill McHugh	OF	5-7	150	FR	S/R	Cooper City, FL/Cooper City High
3	David Mamone	2B/SS	6-1	190	SO	R/R	Wellington, FL/Upper Iowa
4	Chris Villano	LF	5-11	160	FR	R/R	Davie, FL/Western High
5	Tommy Molina	IF	5-9	170	JR	R/R	Miami, FL/Miami Dade Community College
7	Jerry Simmons	SS	5-10	185	SR	R/R	Ft. Myers, FL/Miami Westminster
8	Glenn Mackie	3B	5-10	200	JR	R/R	Cooper City, FL/Cooper City High
9	Charles Cerrato	2B/SS	5-11	180	SO	R/R	Pembroke Pines, FL/Cooper City High
10	Charlie Vaughn	OF	6-1	190	SO	R/R	Miami, FL/American High
11	Tom Ayala	OF	5-10	165	FR	L/L	N. Lauderdale, FL/Coconut Creek High
12	Jim Birch	1B/3B	6-0	215	SO	R/R	Davie, FL/Florida Bible School
17	Joe Giummule	3B/RHP	5-10	180	JR	R/R	Margate, FL/Bethany College
18	Matt Cleveland	2B/SS	6-0	190	FR	R/R	Ft. Lauderdale, FL/Seton Hall University
20	Raul DeCastro	1B	6-3	215	JR	L/L	Sunrise, FL/Florida Bible School
21	Angel Nieves	OF	6-2	190	FR	R/R	Davie, FL/Western High
25	Norberto Lopez	C	5-8	200	JR	R/R	Hialeah, FL/Broward Community College
26	Ben Prill	C	6-1	195	JR	R/R	Decatur, IN/Bellmont High
27	Jamie Galimidi	C	6-0	190	FR	R/R	Miramar, FL/McArthur High
31	Bryan Needle	RHP/IF	6-2	175	FR	R/R	Sunrise, FL/Plantation High
35	Mark Groeneveld	RF	5-11	195	SR	R/R	Hialeah, FL/Pace High
RS	Chris Liese	C	6-2	205	FR	R/R	Coral Springs, FL/Stony Brook Prep
RS	Jason Portman	OF	5-9	180	FR	R/R	Highland Park, IL/Highland Park High
RS	Michael Torres	C	5-10	165	FR	R/R	Ft. Lauderdale, FL/Hollywood Hills High

## PITCHERS

13	John Hassel	RHP	6-3	205	SR	R/R	Melbourne, FL/Eau Gallie High
15	Shannon Scalzi	LHP	5-10	170	SO	S/L	Ft. Lauderdale, FL/Westminster Christian
16	Todd Gittleman	RHP	6-1	160	FR	R/R	Hollywood, FL/Hollywood Hills High
17	Joe Giummule	3B/RHP	5-10	180	JR	R/R	Margate, FL/Bethany College
24	Blake Paynter	RHP	6-4	235	SO	R/R	Cooper City, FL/Barry University
29	Matt Bennett	RHP	6-5	210	SR	R/R	Saratoga Springs, NY/Broward Com. College
30	Felipe Suarez	RHP	6-2	185	SR	R/R	Sunrise, FL/Piper High
31	Bryan Needle	RHP/IF	6-2	175	FR	R/R	Sunrise, FL/Plantation High
32	Bryan Frink	RHP	5-11	220	FR	R/R	N. Lauderdale, FL/Piper High
37	Andy Wintle	RHP	6-0	175	JR	R/R	Coral Springs, FL/Taravella High

Head Coach: Sonny Hansley (11th season)

Assistant: Tom Hysell (1st season)

Assistant: Kevin Peyton (2nd season)

Assistant: Rob Perez (1st season)

Sports Information Director: Mike Laderman

Trainer: Theresa Belesky

Trainer: Brian Anderson

RS: Redshirt players



# 1997-98 Knights' spring baseball schedule...

<u>DATE</u>	<u>DAY</u>	<u>OPPONENT</u>	<u>TIME</u>
January 17	Saturday	ALUMNI GAME	1 p.m.
January 24	Saturday	at FSC All-Star Game (Daytona Beach, FL)	1 p.m.
January 27	Tuesday	BROWARD COMMUNITY COLLEGE (EX)	3 p.m.
January 28	Wednesday	at Broward Community College (EX)	3 p.m.
January 31	Saturday	at Florida Institute of Technology	1 p.m.
February 1	Sunday	at Florida Southern College	1 p.m.
February 5	Thursday	BARRY UNIVERSITY	2:45 p.m.
February 7	Saturday	at St. Leo College	7 p.m.
February 8	Sunday	at Rollins College	1 p.m.
February 11	Wednesday	at Barry University	2:30 p.m.
February 14	Saturday	*at Flagler College (DH)	1 p.m.
February 15	Sunday	*at Flagler College	1 p.m.
February 17	Tuesday	FLORIDA INSTITUTE OF TECHNOLOGY	2:45 p.m.
February 21	Saturday	*EMBRY-RIDDLE UNIVERSITY (DH)	12 p.m.
February 22	Sunday	*EMBRY-RIDDLE UNIVERSITY	1 p.m.
February 24	Tuesday	TRINITY INTERNATIONAL UNIVERSITY	2:45 p.m.
February 27	Friday	*WEBBER COLLEGE	2:45 p.m.
February 28	Saturday	*WEBBER COLLEGE (DH)	12 p.m.
March 2	Monday	CONCORDIA	2:45 p.m.
March 4	Wednesday	at University of Tampa	7 p.m.
March 5	Thursday	at University of Tampa	7 p.m.
March 7	Saturday	at Eckerd College	7 p.m.
March 8	Sunday	at Eckerd College	1 p.m.
March 10	Tuesday	TBA (at Homestead Challenge)	TBA
March 11	Wednesday	TBA (at Homestead Challenge)	TBA
March 13	Friday	*ST. THOMAS UNIVERSITY	2:45 p.m.
March 14	Saturday	*ST. THOMAS UNIVERSITY (DH)	12 p.m.
March 17	Tuesday	TBA (at Ft. Myers)	3:15 p.m.
March 20	Friday	DOMINICAN COLLEGE	2:45 p.m.
March 21	Saturday	TBA (at Ft. Myers) (DH)	2 p.m.
March 22	Sunday	TBA (at Ft. Myers)	12 p.m.
March 24	Tuesday	BAKER UNIVERSITY	2:45 p.m.
March 25	Wednesday	TRINITY INTERNATIONAL UNIVERSITY	2:45 p.m.
March 27	Friday	*at Palm Beach Atlantic College	2:45 p.m.
March 28	Saturday	*at Palm Beach Atlantic College (DH)	12 p.m.
March 31	Tuesday	SPRING ARBOR COLLEGE	2:45 p.m.
April 1	Wednesday	FLORIDA SOUTHERN COLLEGE	2:45 p.m.
April 3	Friday	*FLORIDA MEMORIAL COLLEGE	2:45 p.m.
April 4	Saturday	*FLORIDA MEMORIAL COLLEGE (DH)	12 p.m.
April 8	Wednesday	at Lynn University	3 p.m.
April 10	Friday	*WARNER SOUTHERN COLLEGE	3 p.m.
April 11	Saturday	*WARNER SOUTHERN COLLEGE (DH)	12 p.m.
April 14	Tuesday	LYNN UNIVERSITY	3 p.m.
April 17	Friday	TRINITY INTERNATIONAL UNIVERSITY	3 p.m.
April 21	Tuesday	at Lynn University	3 p.m.
April 24	Friday	*at Northwood University	3 p.m.
April 25	Saturday	*at Northwood University (DH)	12 p.m.
May 1-6	Friday-Wednesday	Florida Sun Conference Championships	TBA
May 9-13	Saturday-Wed.	NAIA Southeast Region Championships	TBA
May 23-28	Saturday-Thursday	NAIA National Championships	TBA

\* Denotes Florida Sun Conference opponent  
at NSU Baseball Complex

*Italicized indicates tournament games*

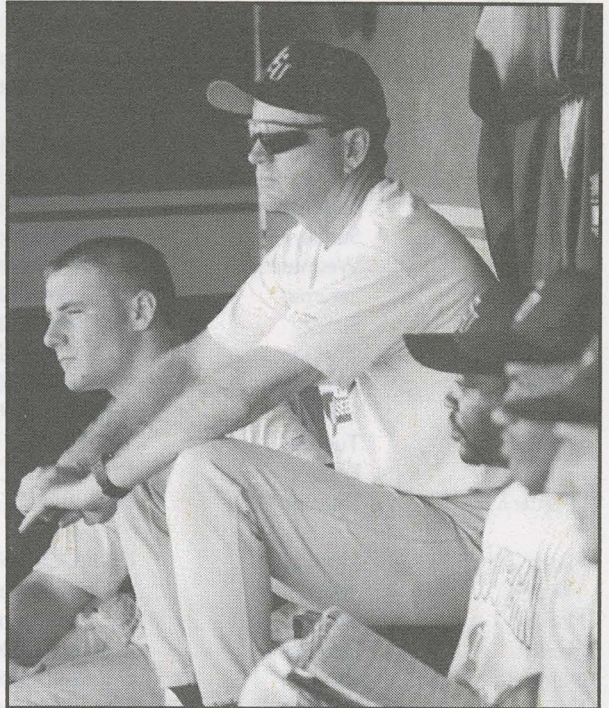
HOME GAMES played



# Q&A: Sonny Hansley eyes the 1997-98 season...

Q Let's talk about the expectations that you have heading into this new baseball season, especially after coming so close last year. The object is, of course, to get back to where you were last year, which was the NAIA Southeast Region championship game, and to go past that. Are the expectations there because of what happened last year? Or do you not even feel the pressure to get back to that spot?

A "I think there's always pressure to do better the following year. I think one of the things that happens in our conference is that historically the team that goes the furthest the year before hasn't done as well the following season. We've obviously lost the middle of our order from last year. We've lost [third baseman] Brian Norris, [center fielder] Claude Love and [catcher] Brian Gerity to graduation, mainstays for us for the last two and three years. Have we replaced them? I'm not sure if we've replaced them yet. I don't think our fall was anywhere we thought it would be, probably because we've got so many young kids and there's so much teaching still going on. We're still not set now as to who's going to play where yet, which is why the first week of the season is going to be so important to us."



Q I've mentioned that, of course, Brewton-Parker was the team to beat last year. They got by us in two games, and then went on to win the national championship, so again they're the team to beat in the Southeast Region. Have you brought in people that you feel can knock them out, or will this be more of a rebuilding-type year with hopes of getting them in another year or two?

A "I don't ever think about rebuilding. I don't think I've ever used that word since I've been here. We use the word 'reloading.' We need big years from a couple of people. We need a big year from Raul DeCastro, we need a big year from Charlie Vaughn and Mark Groeneveld and Jerry Simmons. Those are the guys that are returning players that are extremely important. We need to be strong in the catching area. We've got Ben Prill and Norberto Lopez, both of whom are very capable catchers, yet only one of those guys is going to win that position."

Q You mentioned the four guys that can do good things for Nova Southeastern this season. Those are four guys that certainly are capable of doing the job.

A "They can and they must. They have to carry the ball early in the season until the young guys like Chris Villano, who will probably start in center field, and Tommy Ayala--who will get a chance to play--get their feet wet."

Q So there's really not much lee-way heading into the season, is there?

A "No. Well, I mean, we have some good guys coming in, like Tommy Molina, he's somebody that can certainly hit. Matt Cleveland, who's a transfer coming in, he can hit. Plus we still have guys for us like Jimmy

CONTINUED ON NEXT PAGE



# Q&A...

CONTINUED FROM PREVIOUS PAGE

Birch, who played great for us last year, and Charles Cerrato, are still battling for positions. They have to step up and do what they did last year in order to justify being in the lineup. So we've got some question marks. We're not where we thought we would be after the fall, which is kind of disappointing in that regard heading into January."

Q I remember heading into the regular season last year that you guys were saying that you weren't as strong as the year before, and then last year look at what happens--you get to the region finals. This year, it seems like you're saying the same thing, that you may not be as good as last year's team. Can this team go where last year's team went, like last year's team bested the season before?

A "If our pitching staff is healthy that we'll be in every game that we play. If we put what we consider to be our best defensive team out on the field, then, yeah, we're capable of being a very good team. But right now there's so many questions in my mind. Is John Hassel going to be healthy? Is Matt Bennett going to come back and pitch the way we think he can pitch? Are the freshmen pitchers going to be able to step up and pitch against tough competition that we're playing against? Obviously our goal is to win the conference. We have a very, very rugged independent schedule, but we set it up for that reason, so that when we get to conference play we're not going to be surprised by anybody. Now as far as a lineup goes, if you were to ask me for a lineup, I can show you a piece of paper--a napkin, really--that I wrote on at the airport that says if one thing happens, and another thing happens, and another, what are we going to do, and I don't know right now. So if I were going to project what we were going to do, if we're strong on the mound--which I think we can be--and we're strong up the middle--then we can be good."

Q Talk about the middle of the defense.

A "To start, catching-wise, it'll be a dogfight between Ben and Norberto, which is great. They both want to play, and they're both going to get the chance to be the starting catcher. Jerry Simmons at shortstop, we're happy to have him there. Then we have to decide which guy we want at second base. Center field probably will be Chris Villano, a freshman, who will most likely be surrounded by Mark Groeneveld in right and Charlie Vaughn in left. Third base is still open. Tommy Molina's a third baseman who will battle Jim Birch and Glenn Mackie for the spot. Whatever guy hits is who will most likely play there."

Q You've sounded very excited about the pitching staff. Why?

A "I think the strength of our team this year, I think, is going to be our pitching staff. We have Felipe coming back for his senior season and John Hassel, who we're hoping will be fine after his injury. Plus we have some good freshmen guys, like Todd Gittleman from Hollywood Hills and Brian Frink from Piper. A surprise for us right now, really, has been Joe Giummule. Last year we brought him in as a pitcher and he didn't do well in the fall, so we made him an infielder yet he got hurt, so now we're putting him back on the mound and he pitched very well for us in the fall, so we expect him to be a fourth or fifth starter and give us some innings. But, overall, we have some really good pitchers. Todd Gittleman, he can pitch, he's going to be good. Now I'm not sure if he's going to be there right away this year, but he's got a chance to be a really, really good player. And so does Bryan Frink. Bryan throws hard, he's just learning. He's coming off an arm injury where he's never been hurt before, and now he's getting a feel for it. Then we've got Shannon Scalzi back, he did a good job for us at the end of last year. Bryan Needle is going to pitch some middle relief. Blake Paynter is a 6-foot-3 transfer from Barry University who throws real hard. So there's some optimism on that side that we've got nine or 10 guys that can pitch. That's our strong suit."

CONTINUED ON NEXT PAGE



# Q&A...

CONTINUED FROM PREVIOUS PAGE

Q And, of course, there's Felipe Suarez and John Hassel.

A "What can you say about Felipe other than the fact that he's the hardest worker on our ballclub. He's an excellent pitcher. If we can put Felipe Suarez and John Hassel and Todd Gittleman at one, two and three out there every day, and then come in with Bryan Frink or Joe Giummule in the four or five spot, I like our chances with those guys pitching."

Q With moving John Hassel into the starting rotation, who is going to be this year's John Hassel? Who will be the main closer?

A "Matt Bennett, right now, is ticketed to be the closer. We've talked to him and he's ready to go. He was a closer before he came over here from Broward Community College, before he had arm problems, but he's healthy now. As for John, John wants to start and he deserves an opportunity to do that. We just need to see how he recovers from his surgery. We'd like to have him going in time for conference play beginning in February. So as you can see, there's a lot of question marks...but nobody wants to talk about those things, so we don't talk about them. It just goes with the territory. That's why you have so many players, so if somebody gets hurt, then somebody else steps up. If somebody doesn't make it grade-wise, somebody else steps up. And that's what we've always done, so regarding that part we're in pretty good shape. The key is whether or not they'll keep doing that."

Q The conference is tough, too, this year, isn't it?

A "St. Thomas picked up a lot of guys, a lot of good players, and have a lot of good players coming back, including possibly the best catcher in the conference. I don't know if their pitching is as good as our pitching, but they're good. And Embry-Riddle has picked up some guys that I thought we had a shot at. But we have Felipe...and the rest will follow."

Q But can just one guy lead the way for this team, be the catalyst, so to speak, and have the rest of an entire staff--especially a young staff--follow him?

A "I think he can. If you think back to a pitcher like Mike Chismar...when he was a senior (1994-95), he led. He led because he always pitched that first game, and that first game of a conference series is always the most important because that's the lead-off game. Get that game, and the other guys get confident. There's not as much pressure. And the pressure's on Felipe, and he knows that. But that's why we put him at No. 1, because he handles that pressure. He's won a lot of big games for us. He deserves to be there."

Q I hate to dwell on the past now, but I think you have to in this situation...you lost a lot of good players to graduation last year, such as Claude Love. How do you replace guys like that?

A "I don't know if you ever replace a Claude Love. I think you put somebody out there and, down the road, they hopefully end up playing at that level, because we expect everybody to play exceptional baseball. Chris Villano and Tommy Ayala are two people I've mentioned before, but they're freshmen. Yet they both have the kind of work ethic that Claude had when he was here. They arrive early, they stay late, they've worked hard in practice to go the extra yards. That's why they both have a chance to play as a freshman."

Q Those are all things that Claude Love did.

CONTINUED ON NEXT PAGE



# Q&A...

CONTINUED FROM PREVIOUS PAGE

A "Claude Love did all those things for five years, so that's his legacy that he's left us, so you kind of compare everybody else to his work ethic."

Q What about finding an emotional leader for this year's team? You had it with Brian Norris, but he's gone, too.

A "Nobody's stepped up and done that yet. You look at last year's team, you had two fifth-year guys--Claude and Brian--and then Brian Gerity leaving, who was with the program for four years. Claude was a quiet leader, where Brian was more outspoken who took charge of things."

Q Yet they complimented each other quite well.

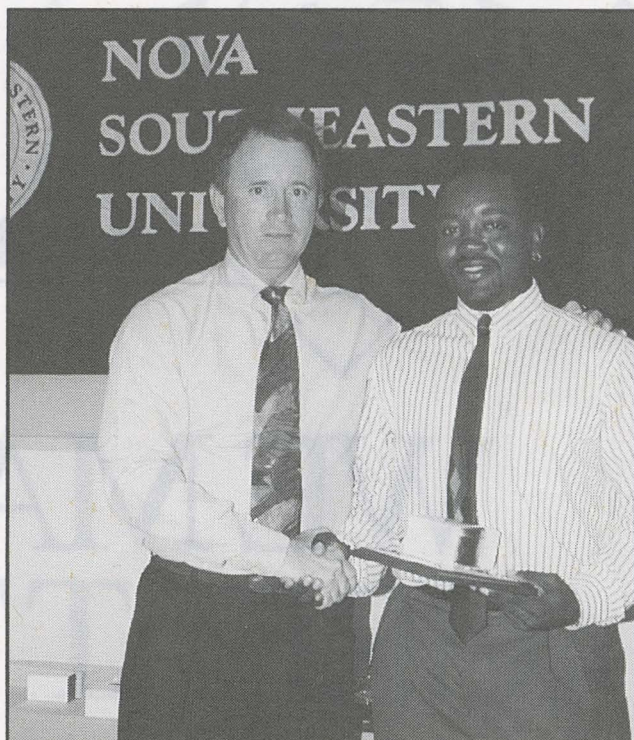
A "They did. So we're still searching for that part, as far as our identity is concerned. I don't know yet who will be the one to step up and take control of that responsibility. Something needs to be done, but we won't know by who until the spring. But maybe it's because there's so many questions at this point as to who is going to be in the starting lineup."

Q Are you...I don't want to say worried more than you've been in the past, but because there's so many spots open right now, and because of the amount of solid players that have graduated from the program, are you concerned? Or are you eagerly anticipating the season? How would you put it?

A "Anxious to get started, anxious to get back on the field and put the pieces together. I think the pieces are there. Now it's our job as coaches--and my job as the head coach--to put the right guys out there and make sure they mesh."

Q Have you done more coaching this year than you have in a while?

A "I have in the fall, just trying to get all our young kids ready to play. Our staff, though, has worked real hard with them. Coach Peyton has done a really good job with the pitchers, I think they're ready to go opening day. Coach Hysell has worked well with the catchers, and they've responded to him. And Coach Perez has got the outfielders, so it's not for lack of work. Now, we just need Groeneveld, Vaughn, DeCastro and Simmons to step up. Then it's just a matter of building the team's confidence up. Not the older guys, because they know they can play. It's just the younger guys that are going to get a chance to show their stuff."



**Sonny Hansley (L) with last year's team most valuable player Claude Love.**





# WE MAKE A GREAT TEAM

The Official Conference Baseball



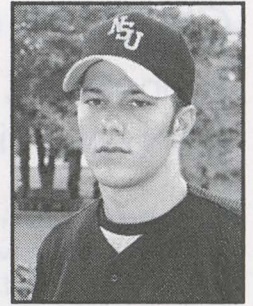


# Meet the Knights...

## TOMMY AYALA

Freshman, OF, 5-10, 165, L/L  
North Lauderdale, FL/Coconut Creek High (97)

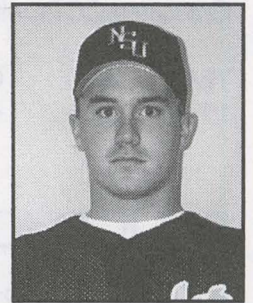
Sports/Wellness major at NSU...Born July 3, 1979, in Ft. Lauderdale, FL... Captained Coconut Creek high last season, hitting .333 with 25 stolen bases... Named Second Team All-County... Member of Broward North All-Stars... Played baseball for 10 years in the Ft. Lauderdale area... Enjoys football, beach volleyball, lifting weights



## MATT BENNETT

Senior, RHP, 6-5, 210  
Saratoga Springs, NY/Broward CC (95)/Franklin Delanor Roosevelt High (93)

Business administration major at NSU...Born August 9, 1975, in Poughkeepsie, NY... Recovered from elbow surgery (after sitting out the entire 1995-96 season) to go 2-3 in 1996-97 for Knights, striking out 21 batters in 39.2 innings pitched... Pitched middle relief at Broward Community College in 1994-95, where he captured Coaches Award... 1993 graduate of Franklin Delanor Roosevelt High School, being a 3-year varsity letter-winner... Enjoys fishing, movies.

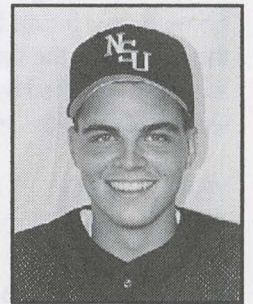


YEAR	ERA	W/L	APP	GS	CG	SV	IP	H	R	ER	BB	SO	WP	HB	BK
1997	5.22	2-3	21	3	0	0	39.2	44	37	23	19	21	8	0	0

## JAMES BIRCH

Sophomore, 1B/3B, 6-0, 215, R/R  
Davie, FL/Florida Bible Christian School (96)

Legal Studies major at NSU...Born December 28, 1977, in North Miami, FL... Batted .286 last year as a freshman for the Knights while playing in 30 games, starting 20... Scored 13 runs and drove in 10... Played Stan Musial Ball over the summer in Indiana... Captained Florida Bible in 1995-96... Chosen Student-Athlete of the Year... Chosen as All-Star at "Stars of Tomorrow Baseball Showcase" from over 120 ballplayers... Participated in Broward County High School All-Star game in 1996... Played club ball with SWBJAA from age 5-17, making All-Star team each season from age 10-on... Helped District 10 Junior League, District 10 Big League teams capture respective titles... Made Broward County Big League All-Star Team in 1995... Enjoys painting, reading, working out.



YEAR	AVG	GP/GS	AB	R	H	2B	3B	HR	RBI	TB	SLG%	BB	HP	SO	OB%
1997	.286	30-20	63	13	18	1	0	0	10	19	.302	9	4	8	.392

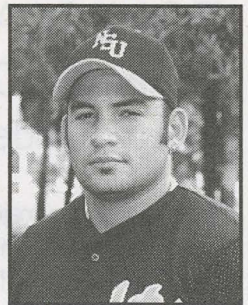


# Meet the Knights...

## CHARLES CERRATO

Sophomore, 2B/SS, 5-11, 180, R/R

Pembroke Pines, FL/Cooper City High School (96)



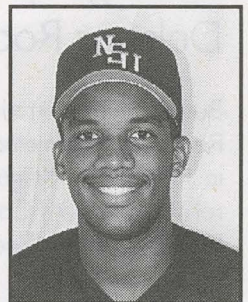
Secondary Education major at NSU...Born May 16, 1978, in North Miami, FL... Had a stellar .315 batting average as a freshman last season for the Knights... Appeared in 46 games, starting 23 of them... Was tied for fifth on team with 7 doubles... A four-year letterman in baseball at Cooper City High, hitting .380 in his senior year... Represented the South in the Broward County All-Star Game in 1996... Prep career batting average of .350... All-around infielder, playing second, third and shortstop throughout career... Graduated CCTY with 3.1 grade point average.

YEAR	AVG	GP/GS	AB	R	H	2B	3B	HR	RBI	TB	SLG%	BB	HP	SO	OB%
1997	.315	46/23	89	27	28	7	1	2	22	43	.483	2	0	18	.316

## RAUL DeCastro

Junior, 1B, 6-3, 215, L/L

Sunrise, FL/Miami-Dade North (96)/Florida Bible Christian School (95)



Business Administration major at NSU...Born May 14, 1977, in the Dominican Republic... In his first year for the Knights in 1997, hit .264 in 52 games (starting 40 of them)... Had 6 doubles and 5 home runs as sophomore, with a .443 slugging percentage... Played summer ball in National College Baseball League, finishing by hitting .368 at the end of second half of the season with 4 home runs, 15 runs batted in, 7 doubles... Named the 1995 *Miami Herald* Broward Player of the Year, leading the county for the batting title... Named Florida Bible's Team Most Valuable Player, captured team triple crown as senior...Drafted by the New York Yankees in the 26th round... Played at Piper High as a sophomore, leading team with .342 batting average...Enjoys chess, billiards, basketball.

YEAR	AVG	GP/GS	AB	R	H	2B	3B	HR	RBI	TB	SLG%	BB	HP	SO	OB%
1997	.264	52/40	140	16	37	6	2	5	26	62	.443	13	1	31	.331

## BRYAN FRINK

Freshman, RHP, 5-11, 220

N. Lauderdale, FL/Piper High (97)

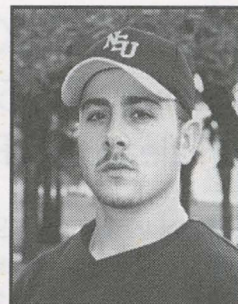
Sports Wellness major at NSU...Born March 1, 1979, in North Miami, FL... As senior at Piper High, hit .315 with team-best 5 home runs, 25 runs batted in, 11 stolen bases... Recorded 5-2 mark as a pitcher, leading team in strikeouts with 58, walking just 17... Named Second Team All-County... Named to 1996-97 Broward All-Star Team... As junior, no-hit St. Thomas Aquinas in district championship game, finished season with 0.94 earned run average, 79 strikeouts... Named First Team All-County in 1995-96, Second Team in 1994-95, Honorable Mention in 1993-94... Enjoys collecting baseball cards.



## Meet the Knights...

### JAMIE GALIMIDI

Freshman, C, 6-0, 190, R/R  
Miramar, FL/McArthur High (97)



Born July 27, 1979, in Hollywood, FL... Helped McArthur High improve, going from 4-24 team to 18-13 squad upon his transfer into the school... Mustangs' team captain in 1996-97... Hit .408 with 38 runs batted in, .591 on base percentage, 77 percent put-out percentage... All-County Honorable Mention... Voted to Broward County All-Star Game... Attended Green Valley High School I in Las Vegas, starting as a junior... Captured Green Valley Iron Man Award... Named Defensive Player of the Year... Enjoys all sports.

### TODD GITTLEMAN

Freshman, RHP, 6-1, 160  
Hollywood, FL/Hollywood Hills High (97)

Sports Management major at NSU... Born February 2, 1979, in Bridgeport, CT... Played for Hollywood Hills Spartans in 1996-97, helping prep team to 19-9 overall mark, advancing to district semifinals... Posted a 7-3 overall record (7-0 against Broward County teams)... Led county in strikeouts with 94... Hit .372 with 3 home runs, 25 runs batted in... Named to Sun-Sentinel, Miami Herald All-Broward Teams... Named Hills' Offensive Most Valuable Player as senior... Played baseball at Hollywood's Rotary Park since 5.

### JOE GIUMMULE

Junior, RHP/3B, 5-10, 180, R/R  
Margate, FL/Bethany College (96)/Coconut Creek High (95)



Education major at NSU... Born February 4, 1976, in Fort Lauderdale, FL... Started 9 of last season's first 10 games before having to go in for reconstructive knee surgery thanks to injury... Had led team with .471 on-base percentage... At Bethany College (WV), a Third Team All-PAC third baseman, honorable mention pitcher All-PAC, PAC Player of the Week once (thanks to 15 strikeout performance)... 1995 prep All-County First Team selection... Starting third baseman in 1995 All-Star Game.

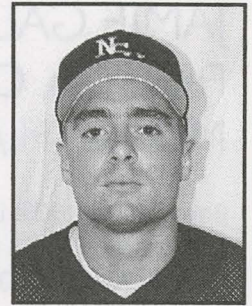
YEAR	AVG	GP/GS	AB	R	H	2B	3B	HR	RBI	TB	SLG%	BB	HP	SO	OB%
1997	.250	10/9	24	9	6	0	0	0	2	6	.250	8	2	4	.471



# Meet the Knights...

## MARK GROENEVELD

Senior, RF, 5-11, 195, R/R  
Hialeah, FL/Pace High (94)



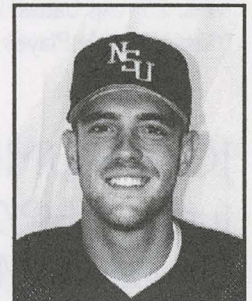
Pre-Law major at NSU... Born October 18, 1976, in Amsterdam, Netherlands... Helped Knights to Southeast Region championship game last year by hitting .288 overall--fifth best on the team... Tied for team lead with 49 runs scored... Led team with 41 walks... Spent this past off-season in Geneva, NY, playing in Northeastern Collegiate Baseball League, being fourth on team in hitting with .272 batting average... Played in 52 games for Knights as a sophomore, hitting .256 with 10 doubles, 7 triples, 4 home runs, 37 runs batted in... Hit .327 as freshman with 3 home runs, playing in 48 of 51 games... Played 4 years high school varsity baseball... Pace team captain senior year, hitting .393, leading team in walks, stolen bases and runs scored... Named Pace Most Valuable Player... Graduated high school with 3.2 overall grade point average.

YEAR	AVG	GP/GS	AB	R	H	2B	3B	HR	RBI	TB	SLG%	BB	HP	SO	OB%
1995	.327	51/48	147	33	48	7	0	3	31	64	.435	34	4	35	.455
1996	.256	52/49	168	38	43	10	7	4	37	79	.470	26	2	40	.359
1997	.288	60/58	198	49	57	7	0	5	34	79	.399	41	4	51	.418
TOT	.290	163/155	513	120	148	24	7	12	102	222	.434	101	10	126	.410

## JOHN HASSEL

Senior, RHP, 6-3, 205

Melbourne, FL/Brevard Community College  
(95)/Eau Gallie High (93)



Accounting major at NSU... Born August 20, 1975, in Jacksonville, FL... One of the top pitchers in the National Association of Intercollegiate Athletics (NAIA) last season, tying the national record with 16 saves in 1996-97... Named National Pitcher of the Week last year... Named All-Florida Sun Conference, going 7-0 with 2.37 earned run average in 30 appearances, 57 innings pitched, 62 strikeouts... Held opponents to .195 batting average... Underwent surgery this past off-season to repair the labrum in his right (throwing) shoulder... Spent summer of '96 in Stan Musial League, going 7-1 with team-best 1.37 earned run average in 59 innings pitched... Appeared in 17 games as a sophomore, going 1-2 with 4.97 ERA and 25 strikeouts in 29 innings... At Brevard Community College, used as a relief pitcher... Finished with 3.21 ERA... Named Team Most Valuable Player in Stan Musial Baseball League in summer of 1995... Was 5-3 with 1.92 ERA, 52 SO in 59 innings, 7 complete games... Led team in runs batted in with 22 and 9 doubles while hitting .392 for Melbourne Indians... Lettered 3 years in high school for baseball, 2 football, 1 swimming... Sixth in conference tournament in 50M freestyle... Also placed in 100, 200 relay, 400 relay freestyle... Hit .328 as a DH in high school in 1993... Maintained 3.2 grade point average throughout high school... Hobbies include basketball, swimming, lifting weights.

YEAR	ERA	W/L	APP	GS	CG	SV	IP	H	R	ER	BB	SO	WP	HB	BK
1996	4.97	1-2	17	0	0	0	29.0	31	21	16	14	25	4	4	0
1997	2.37	7-0	30	3	0	16	57.0	39	20	15	32	62	4	1	0
TOT	3.67	8-2	47	3	0	16	86.0	70	41	31	46	87	8	5	0



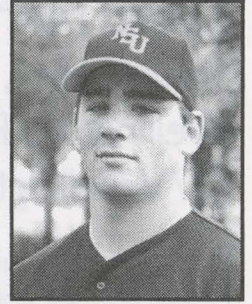
# Meet the Knights...

## CHRIS LIESE

Freshman, C, 6-2, 205, R/R

Coral Springs, FL/Stony Brook Prep (97)

Born May 12, 1979, in Smith town, NY... Played for Stony Brook Bears in 1996-97, the League 8 and county champions... Captained the squad, recording .514 batting average, 39 runs batted in (school record)... Named All-League, All-County, league Most Valuable Player... Led county with batting average... As high school athlete, a 3-year All-League selection, 3-year top-10 high batting average in county... Summer ball, selected to Connie Mack High School All-Star Tour Team... Played for New York Smith town Cardinals... Named to FABL All-Star team three years... Enjoys writing.

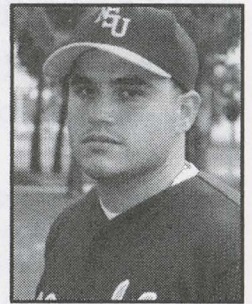


## NORBERTO LOPEZ

Junior, C, 5-8, 200, R/R

Hialeah, FL/Broward Community College (97)/Pace High (95)

Accounting major at NSU... Born December 9, 1976, in Havana, Cuba... Played in Junior College All-Star Game in Kissimmee last season... A four-year varsity letterman at Pace... Named Most Valuable Player and team captain prep senior year... Hit .358 as senior, participated in Seabring All-Star Game, Bucky Dent All-Star Game, The Showcase Classic All-Star Game as senior.

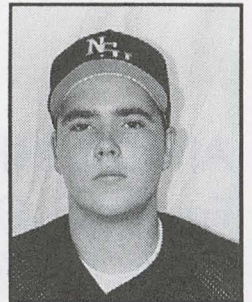


## GLENN MACKIE

Junior, 3B, 5-10, 200, R/R

Cooper City, FL/Cooper City High (95)

Business major at NSU... Born October 7, 1977, in Miami, FL... Appeared in 18 games for the Knights last season as a sophomore, starting 1... Scored 4 runs, drove in 4 others last season... Worked hard this past off-season, hoping to play a role on this year's team... Appeared in 10 games as a freshman after earning a spot on the NSU roster as a walk-on, getting 3 hits and scoring 5 runs... Helped lead Cooper City High to back-to-back district titles in junior and senior year... Enjoys billiards.



YEAR	AVG	GP/GS	AB	R	H	2B	3B	HR	RBI	TB	SLG%	BB	HP	SO	OB%
1996	.200	10/0	15	5	3	1	0	0	0	4	.267	3	0	2	.333
1997	.071	18/1	14	4	1	0	0	0	4	1	.071	2	1	8	.211
TOT	.135	28/1	29	9	4	1	0	0	4	5	.169	5	1	10	.272

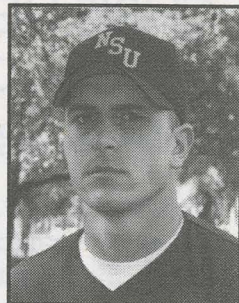


## Meet the Knights...

### DAVE MAMONE

Sophomore, 2B/SS, 6-1, 190, R/R  
Wellington, FL/Upper Iowa University  
(97)/Wellington High (96)

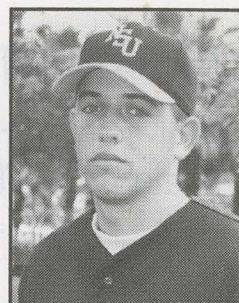
Business Management major at NSU... Born September 3, 1978, in New Brunswick... Helped Broward County Big League All-Stars capture 1997 Big League World Series title... Helped Coral Springs American take championship... This past summer batting average a stellar .444 with 10 home runs, 31 runs batted in... Advanced to Class 6A prep Final Four in 1995... Enjoys weight lifting, fishing.



### BRYAN NEEDLE

Freshman, RHP/IF, 6-2, 175, R/R  
Sunrise, FL/Plantation High (97)

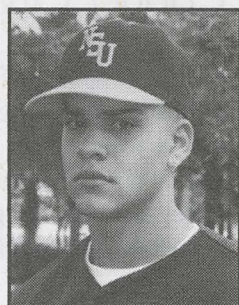
Education major at NSU... Born October 28, 1978, in New Brunswick... Named to All-Conference Team, Third Team All-County last year at Plantation High, helping Colonels advance to second round of playoffs... Went 4-2 as senior, finishing third in county in earned run average with 1.79 ERA... Captured "King of the Hill" Award for Plantation... Graduated with 3.95 grade point average (top five percent of class)... Tossed a one-hitter against Taravella High... Earned 1995 PHS Baseball Golf Glove Award, 1996 Baseball Coaches Award... 1996 All-Conference Team, All-County Honorable Mention... Selected to Who's Who Magazine... Hit .365 this past Big League season with 3 home runs, 22 runs batted in... Straight-A Honor Roll as freshman and sophomore... A three-year varsity letter winner... Enjoys going to the beach, reading, watching the Los Angeles Dodgers.



### ANGEL NIEVES

Freshman, OF, 6-2, 190, R/R  
Davie, FL/Western High (97)

Business Administration major at NSU... Born July 14, 1979, in Miami, FL... Helped Western to school-best 22-7 overall mark, capturing team's Hitting Award thanks to .415 batting average with 27 runs batted in, 19 runs scored... Batted .556 through half the season... Named *Miami Herald* and *Sun-Sentinel* All-County Second Team... Named to Broward County South All-Star Team... Playing baseball since age 8... Has been to four Khoury League World Series tournaments, coming in second twice... Named to respective All-Star Teams all six years of Khoury League... Helped team to Khoury League championship juvenile year... Enjoys music, installing stereo equipment.





# Meet the Knights...

## BLAKE PAYNTER

Sophomore, RHP, 6-4, 235

Cooper City, FL/Barry University (97)/Cooper City High (96)

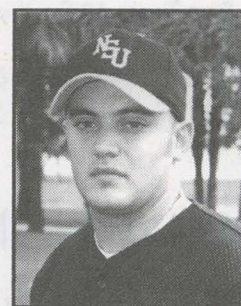


Business Administration major at NSU... Born May 2, 1978, in Merrville, Indiana... Missed a month of season last year at Barry University due to illness, still second on team in appearances... Went 3-1... Enjoys basketball, billiards, *Seinfeld*... Interested in joining military to become pilot, pursue career as FBI agent.

## JASON PORTMAN

RS Freshman, OF, 5-9, 180, R/R

Highland Park, IL/Highland Park High

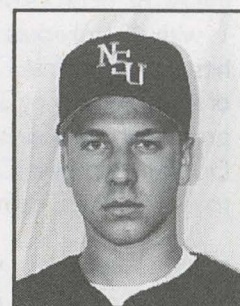


Business major at NSU... Born November 20, 1978, in Skokie, IL... Was in the top-three in almost every offensive statistical category, including hitting .360 with runners in scoring position... Graduated on Honor Roll with 2.8 grade point average... Played for Highland Park/Deerfield Travel Team from 1987-93, with on-base percentage of over .400... A 1996 All-Star... Played in Chicago Maccabi from 1993-96... Played across United States, including stops in Cleveland, Iowa, Missouri, New Jersey, Wisconsin, Indiana... A volunteer for the Florida Marlins.

## BEN PRILL

Junior, C, 6-1, 195, R/R

Decatur, IN/Bellmont High (95)



Sports Management major at NSU... Born March 1, 1977, in Van Wert, OH... Entering third season with Nova Southeastern University... Appeared in 15 games for Knights last season as a sophomore, starting 13 of them... Threw out 6 of 15 runners attempting to steal last season... Committed zero errors... Played in 19 games as a freshman, recording 61 putouts and 4 assists... A three-year varsity player at Belmont... Senior year batted .330, led team in runs batted in, led conference in overall defense at position and runners caught stealing, an All-State Honorable Mention catcher and All-Conference catcher... Had 15-game hitting streak in 1994-95... Enjoys weight lifting, movies.

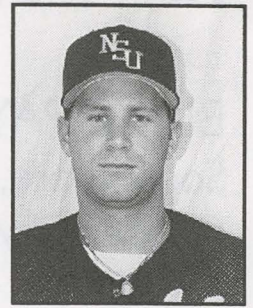
YEAR	AVG	GP/GS	AB	R	H	2B	3B	HR	RBI	TB	SLG%	BB	HP	SO	OB%
1996	.186	19/11	43	3	8	0	0	0	3	8	.186	3	3	8	.286
1997	.171	15/13	41	1	7	1	0	0	1	8	.195	6	0	12	.277
TOT	.178	34/24	84	4	15	1	0	0	4	16	.190	9	3	20	.281



# Meet the Knights...

## JERRY SIMMONS

Senior, SS, 5-10, 185, R/R  
 Ft. Myers, FL/Edison Community College  
 (95)/Miami Westminster (93)

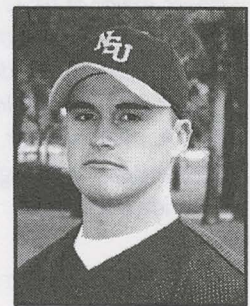


Business Administration major at NSU... Born August 11, 1975, in Ft. Myers, FL... One of the top infielders in the Florida Sun Conference last season, recording a .908 fielding percentage with 70 putouts, 137 assists... Started 53 of his 55 games played as a junior for the Knights, hitting .271 with 7 doubles... Struggled with a hamstring injury his final season at Edison CC, hitting .275 with 7 stolen bases... Senior prep season hit .335 with 3 home runs, 12 stolen bases... Selected to Team Florida (Florida All-Stars) Sun Belt Classic in Oklahoma... First Team All-Dade selection in 1993... Attended Bishop Verot High from 1989-92... Named First Team All-Southwest Florida in 1991, 92... Enjoys hunting, fishing, golf, weight lifting.

YEAR	AVG	GP/GS	AB	R	H	2B	3B	HR	RBI	TB	SLG%	BB	HP	SO	OB%
1997	.271	55/53	181	35	49	7	2	1	19	63	.348	20	8	20	.367

## SHANNON SCALZI

Sophomore, LHP, 5-10, 170  
 Ft. Lauderdale, FL/Valencia Community College  
 (96)/Westminster Academy (95)



Business major at NSU... Born January 15, 1977, in Westpoint, NY... Went 4-2 over this past summer with 1 save and an earned run average of 3.72 in 9 games for the ACBL of Brooklyn NY... In 43 innings, compiled a strikeout to walk ratio of 2.5-1, with 45 strikeouts and 18 walks... Selected to All-Star team after going 1-1 with 19 strikeouts, 2 walks and 9 hits allowed in final 12 innings pitched... Made 11 appearances for the Knights last season in his freshman year of eligibility, starting 3 of them... Did not play ball at Valencia CC... Honorable Mention All-County selection as prep senior as outfielder... Helped Brooklyn All-Stars to second place finish in National AAU 16-Year-Old Division tourney in Omaha, NE, going 17-for-24 with 1 home run, 12 runs batted in in 6 games to be selected to All-Tourney Team... Enjoys weight training.

YEAR	ERA	W/L	APP	GS	CG	SV	IP	H	R	ER	BB	SO	WP	HB	BK
1997	11.45	0-2	11	3	0	0	22.0	25	30	28	32	17	2	2	0

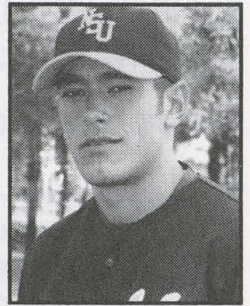


# Meet the Knights...

## FELIPE SUAREZ

Senior, RHP, 6-2, 185

Sunrise, FL/Brevard Community College (95)/Piper High (94)



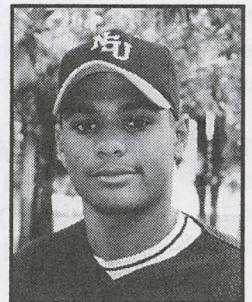
Accounting major at NSU... Born March 12, 1976, in Bogota, Colombia... Coming off of a stellar 1996-97 junior season for the Knights, in which he went 11-5 with a 2.61 earned run average while being named the Florida Sun Conference's Player of the Year... Also an All-Region selection, and NAIA All-American Honorable Mention... Also had a solid sophomore season for the Knights, going 8-4 with a 2.55 ERA... In Northeastern Collegiate Baseball League in summer of 1996, went 6-3 with 1.88 ERA, good enough to make All-Star Team... Played one season at Brevard Community College... Prep senior year named Second Team All-County with 2.68 ERA, 105 strikeouts, 23 walks in 79 innings pitched... Enjoys fishing, snorkeling, scuba diving.

YEAR	ERA	W/L	APP	GS	CG	SV	IP	H	R	ER	BB	SO	WP	HB	BK
1996	2.55	8-4	14	13	7	0	84.2	84	33	24	21	78	1	3	0
1997	2.61	11-5	16	16	7	0	124.0	98	42	36	29	114	2	8	1
TOT	2.58	19-9	30	29	14	0	208.2	182	75	60	50	192	3	11	1

## MICHAEL TORRES

RS Freshman, C, 5-10, 165, R/R

Ft. Lauderdale, FL/Hollywood Hills High (97)

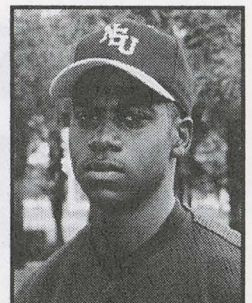


Pre-Law major at NSU... Born March 29, 1978, in New York, NY... A four-year varsity baseball player at Hollywood Hills... Helped lead Spartans to 19-9 overall mark last season as a senior with .280 batting average, 13 runs batted in... Named Most Valuable Defensive Player on team... Selected to Broward Senior All-Star Game... Junior prep season received the Dick Howser Award for player with best attitude towards baseball... Brought up to varsity level during freshman season... Played optimist ball in Hialeah, making All-Star Team all three years... Enjoys working out.

## CHARLIE VAUGHN

Sophomore, OF, 6-1, 190, R/R

Miami, FL/American High (96)



Business major at NSU... Born February 13, 1978, in Miami, FL... Had a productive freshman season for the Knights last year, hitting .287 while starting 56 of 60 games played... Led NSU with 4 triples last year, and was third with 11 doubles... Played in Geneva, NY, this past summer tuning up for collegiate season... Helped lead American High to region quarterfinals as prep senior.

YEAR	AVG	GP/GS	AB	R	H	2B	3B	HR	RBI	TB	SLG%	BB	HP	SO	OB%
1997	.287	60/56	181	31	52	11	4	1	31	74	.409	28	9	46	.406

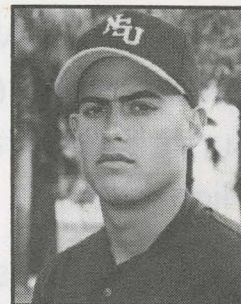


# Meet the Knights...

## CHRIS VILLANO

Freshman, LF, 5-11, 160, R/R  
Davie, FL/Western High (97)

Recreation/Wellness major at NSU... Born December 30, 1978, in Ft. Lauderdale, FL... Hit .429 at Western High last season with 6 home runs, 27 runs batted in, 9 stolen bases... First Team All-County for *Miami Herald*, Second Team All-County for *Sun-Sentinel*... Named Offensive Player of the Game in Broward All-Star Game... Played for Broward County squad in 1996 Big League World Series.



## ANDY WINTLE

Junior, RHP, 6-0, 175  
Coral Springs, FL/Taravella High (95)

Legal Studies major at NSU... Born October 4, 1977, in Louisiana... Entering third season with the Knights... Appeared in 8 games for the Knights last year... Helped 1996 Summer League teams to Hoosier Classic, Connie Mack State championships... Went 3-1 as a freshman at NSU, making 11 appearances... Senior year at Taravella went 1-1-1 with 3.23 earned run average, 12.2 innings pitched, 18 strikeouts, 10 walks, named Most Dedicated Player... Enjoys reading, billiards, basketball.



YEAR	ERA	W/L	APP	GS	CG	SV	IP	H	R	ER	BB	SO	WP	HB	BK
1996	6.45	3-1	11	1	0	0	22.1	25	21	16	19	19	3	4	0
1997	28.93	0-0	8	0	0	0	4.2	17	18	15	10	4	1	3	0
TOT	17.69	3-1	19	1	0	0	27.0	42	39	31	29	23	4	7	0

**SPALDING®**  
**TOP FLITE®**  
**PRO**



# 1996-97 game-by-game results...

OVERALL RECORD: 43-18

FLORIDA SUN CONFERENCE RECORD: 19-5

PLAYOFF RECORD: 6-4 (NAIA SE Region finalist)

DATE	OPPONENT	SCORE	W-L	RECORD (FSC)
2/1	at Florida Tech	2-1	W	1-0
2/3	UNIVERSITY OF TAMPA	3-5	L	1-1
2/4	LYNN UNIVERSITY	20-9	W	2-1
2/5	at Barry University	6-8	L	2-2
2/8	ROLLINS COLLEGE	0-4	L	2-3
2/9	ROLLINS COLLEGE	1-2	L	2-4
2/12	BARRY UNIVERSITY	9-8	W	3-4
2/14	*PALM BEACH ATLANTIC COLLEGE	13-2	W	4-4 (1-0)
2/15	*PALM BEACH ATLANTIC COLLEGE	8-6	W	5-4 (2-0)
2/18	FLORIDA TECH	7-8	L	5-5
2/23	*at Embry-Riddle University	3-1	W	6-5 (3-0)
2/23	*at Embry-Riddle University	2-3	L	6-6 (3-1)
2/24	*at Embry-Riddle University	2-1	W	7-6 (4-1)
2/25	TRINITY INTERNATIONAL UNIVERSITY	8-1	W	8-6
2/28	*FLAGLER COLLEGE	6-5	W	9-6 (5-1)
3/1	*FLAGLER COLLEGE	10-0	W	10-6 (6-1)
3/1	*FLAGLER COLLEGE	11-1	W	11-6 (7-1)
3/3	MONMOUTH UNIVERSITY	6-5	W	12-6
3/4	MONMOUTH UNIVERSITY	6-3	W	13-6
3/5	CONCORDIA UNIVERSITY	5-6	L	13-7
3/7	MADONNA UNIVERSITY	2-1	W	14-7
3/9	at Florida Southern College	1-3	L	14-8
3/12	Montclair State University (at Homestead)	8-7	W	15-8
3/12	Mayville State University (at Homestead)	18-2	W	16-8
3/13	St. Ambrose University (at Homestead)	10-5	W	17-8
3/16	ECKERD COLLEGE	6-0	W	18-8
3/16	ECKERD COLLEGE	2-3	L	18-9
3/19	COLLEGE OF NEW JERSEY	11-3	W	19-9
3/21	*at Warner Southern College	17-6	W	20-9 (8-1)
3/22	*at Warner Southern College	11-3	W	21-9 (9-1)
3/22	*at Warner Southern College	7-6	W	22-9 (10-1)
3/25	BROWN UNIVERSITY	10-2	W	23-9
3/27	BROWN UNIVERSITY	10-5	W	24-9
3/28	DOMINICAN COLLEGE	10-9	W	25-9
4/1	SPRING ARBOR COLLEGE	14-3	W	26-9
4/2	TRINITY INTERNATIONAL UNIVERSITY	4-3	W	27-9
4/4	*NORTHWOOD UNIVERSITY	9-4	W	28-9 (11-1)
4/5	*NORTHWOOD UNIVERSITY	2-1	W	29-9 (12-1)
4/5	*NORTHWOOD UNIVERSITY	1-0	W	30-9 (13-1)
4/8	at Lynn University	3-16	L	30-10
4/11	*at Webber College	1-4	L	30-11 (13-2)
4/12	*at Webber College	5-3	W	31-11 (14-2)
4/12	*at Webber College	2-6	L	31-12 (14-3)
4/18	*FLORIDA MEMORIAL COLLEGE	4-3	W	32-12 (15-3)
4/19	*FLORIDA MEMORIAL COLLEGE	5-0	W	33-12 (16-3)



# 1996-97 game-by-game results, continued...

DATE	OPPONENT	SCORE	W-L	RECORD (FSC)
4/19	*FLORIDA MEMORIAL COLLEGE	6-3	W	34-12 (17-3)
4/21	LYNN UNIVERSITY	4-0	W	35-12
4/25	*at St. Thomas University	3-2	W	36-12 (18-3)
4/26	*at St. Thomas University	0-9	L	36-13 (18-4)
4/28	*at St. Thomas University	13-14	L	36-14 (18-5)
5/1	*PALM BEACH ATLANTIC COLLEGE	3-2	W	37-14 (19-5)
5/5	vs Northwood University (FSC Tourney)	1-8	L	37-15
5/6	vs. Palm Beach Atlantic College (FSC)	6-1	W	38-15
5/7	vs. Webber College (FSC)	5-2	W	39-15
5/7	vs. Northwood University (FSC)	13-6	W	40-15
5/8	vs. St. Thomas University (FSC finals)	1-5	L	40-16
5/14	vs. Huntingdon College (NAIA SE Region)	4-2	W	41-16
5/15	vs. St. Thomas University (NAIA SE Region)	1-0	W	42-16
5/16	vs. Brewton-Parker (NAIA SE Region)	2-17	L	42-17
5/16	vs. Huntingdon College (NAIA SE Region)	7-6	W	43-17
5/17	vs. Brewton-Parker (NAIA SE Region finals)	2-7	L	43-18

\* Denotes Florida Sun Conference game

HOME GAME

*Italicized indicates tournament game*

# 1996-97 individual statistics...

## HITTING

PLAYER	AVG	GP/GS	AB	R	H	2B	3B	HR	RBI	TB	SLG%	BB	HP	SO	OB%
Claude Love	.363	61-61	226	44	82	19	3	7	46	128	.566	29	7	19	.444
Brian Norris	.327	61-60	196	49	64	10	3	10	48	110	.561	33	22	34	.467
C. Cerrato	.315	46-23	89	27	28	7	1	2	22	43	.483	2	0	18	.316
Brian Gerity	.305	58-56	200	13	61	13	0	6	46	92	.460	12	13	28	.381
M. Groeneveld	.288	60-58	198	49	57	7	0	5	34	79	.399	41	4	51	.418
Charles Vaughn	.287	60-56	181	31	52	11	4	1	31	74	.409	28	9	46	.406
Jim Birch	.286	30-20	63	13	18	1	0	0	10	19	.302	9	4	8	.392
S. Nichols	.279	56-33	104	31	29	6	0	2	10	41	.394	18	0	14	.376
Jose Cuadro	.275	61-56	193	43	53	2	1	2	23	63	.326	36	5	25	.398
Jerry Simmons	.271	55-53	181	35	49	7	2	1	19	63	.348	20	8	20	.367
Raul DeCastro	.264	52-40	140	16	37	6	2	5	26	62	.443	13	1	31	.331
Joe Giummule	.250	10-9	24	9	6	0	0	0	2	6	.250	8	2	4	.471
Matt Veronesi	.184	28-10	49	7	9	1	0	1	3	13	.265	5	0	10	.259
Ben Prill	.171	15-13	41	1	7	1	0	0	1	8	.195	6	0	12	.277
Glenn Mackie	.071	18-1	14	4	1	0	0	0	4	1	.071	2	1	8	.211
OTHERS															
Mario Deluca	.000	3-0	0	0	0	0	0	0	0	0	.000	0	0	0	.000
TOTALS	.291	61-61	1899	372	553	91	16	42	325	802	.422	262	76	328	.394
OPPONENTS	.240	61-61	1855	261	446	69	8	27	223	612	.330	242	36	436	.337



# 1996-97 individual statistics...

## PITCHING

PLAYER	ERA	W/L	APP	GS	CG	SV	IP	H	R	ER	BB	SO	WP	HB	BK
R. Anschuetz	2.31	9-4	17	16	4	1	105.1	81	43	27	46	104	8	10	0
John Hassel	2.37	7-0	30	3	0	16	57.0	39	20	15	32	62	4	1	0
David Gates	2.57	5-0	12	7	0	0	49.0	44	15	14	17	32	4	2	1
Felipe Suarez	2.61	11-5	16	16	7	0	124.0	98	42	36	29	114	2	8	1
Dan Zitnick	3.21	7-3	14	13	2	0	75.2	76	39	27	37	67	3	7	0
Matt Bennett	5.22	2-3	21	3	0	0	39.2	44	37	23	19	21	8	0	0
Ricky Wolfer	5.91	1-1	21	0	0	2	21.1	20	15	14	18	14	2	3	0
Shannon Scalzi	11.45	0-2	11	3	0	0	22.0	25	30	28	32	17	2	2	0
M. Redmond	18.00	1-0	3	0	0	0	1.0	2	2	2	2	1	0	0	0
Andy Wintle	28.93	0-0	8	0	0	0	4.2	17	18	15	10	4	1	3	0
TOTALS	3.62	43-18	61	61	13	19	499.2	446	261	201	242	436	34	36	2
OPPONENTS	5.37	18-43	61	61	15	6	483.0	553	372	288	262	328	59	76	7

## FIELDING

PLAYER	C	PO	A	E	FLD%	Dps	CSB	SBA%	PB	CI
Ben Prill	97	83	14	0	1.000	1	15	.714	6	0
David Gates	19	5	14	0	1.000	0	6	.667	0	0
John Hassel	17	3	14	0	1.000	0	15	.938	0	0
Glenn Mackie	2	1	1	0	1.000	0	0	---	0	0
Claude Love	126	125	0	1	.992	0	0	---	0	0
Brian Gerity	405	361	39	5	.988	0	64	.719	7	0
Jim Birch	136	127	7	2	.985	10	0	---	0	0
Mark Groeneveld	136	125	8	3	.978	0	0	---	0	0
Raul DeCastro	360	316	35	9	.975	19	0	---	0	0
Matt Veronesi	37	30	6	1	.973	3	0	---	0	0
Felips Suarez	27	9	17	1	.963	0	12	.632	0	0
Jose Cuadro	245	102	133	10	.959	23	0	---	0	0
Brian Norris	160	38	110	12	.925	11	0	---	0	0
Jerry Simmons	228	70	137	21	.908	17	0	---	0	0
Joe Giummule	20	6	12	2	.900	1	0	---	0	0
Charles Cerrato	34	14	16	4	.882	4	0	---	0	0
Charles Vaughn	49	40	3	6	.878	0	0	---	0	0
Shaughn Nichols	32	27	1	4	.875	0	0	---	0	0
Matt Bennett	15	4	9	2	.867	1	9	.900	0	0
Dan Zitnick	29	8	17	4	.862	0	15	.682	0	0
Ryan Anschuetz	26	5	17	4	.846	0	14	.483	0	0
Andy Wintle	3	0	2	1	.667	0	2	1.000	0	0
Shannon Scalzi	3	0	2	1	.667	0	1	.500	0	0
Ricky Wolfer	1	0	0	1	.000	0	5	.833	0	0
Mario Deluca	0	0	0	0	.000	0	0	---	0	0
Mike Redmond	0	0	0	0	.000	0	0	---	0	0
TOTALS	2207	1499	614	94	.957	32	79	.687	13	0
OPPONENTS	2173	1449	627	97	.955	39	62	.646	18	1



## A look back: The 1996-97 baseball season...

FEBRUARY 1: Felips Suarez gave up just 1 run on 2 hits, while Raul DeCastro drove home the winning run in the top of the eighth, to give the visiting Knights a 2-1 win past Florida Tech in NSU's season opener... FEBRUARY 3: After being held scoreless for eight innings, NSU's bats came to life in the 9th, but it wasn't enough as they lost 5-3 to the University of Tampa... FEBRUARY 4: NSU scored 12 runs in the bottom of the sixth to break open a close game to defeat visiting Lynn University 20-9. Jose "Mickey" Cuadro went 4-for-4 with a double, 4 runs scored and 2 runs batted in for the Knights... FEBRUARY 5: The Knights, at one point up 6-1 early in the game, yielded 7 unanswered runs to host Barry University to fall 8-6. NSU pitchers John Hassel, Matt Bennett and Ricky Wolfer gave up just 6 hits to Barry in the loss... FEBRUARY 8: Only Claude Love, Brian Gerity, Cuadro, Mark Groeneveld and Joe Giummule could get hits as the Knights fell to Rollins College 4-0... FEBRUARY 9: After being shut out the previous day, NSU was held in check again, this time 2-1... FEBRUARY 12: The Knights used a 5-run third inning to defeat visiting Barry University 9-8. Eight different batters got hits for NSU, which snapped its 3-game losing streak... FEBRUARY 14: Appropriately for Valentines Day, Love led the Knights to a 13-2 win past Palm Beach Atlantic College with 3 hits (including a home run), 3 RBI and 3 runs scored... FEBRUARY 15: Matt Veronesi hit a 2-run homer over the 365-foot mark in left-center field to give the Knights a dramatic 8-6 win over Palm Beach Atlantic College... FEBRUARY 18: Brian Norris continued his personal hot streak from the plate with a 3-for-4 performance that included a home run, 3 RBI and 2 RS, but the Knights still fell to Florida Tech, 8-7... FEBRUARY 23: Charlie Vaughn went a combined 5-for-6 with 1 RBI and 2 stolen bases to lead NSU to a double-header split with conference rival Embry-Riddle University, 3-1 and 2-3... FEBRUARY 24: Gerity's double brought home Jerry Simmons with the winning run in the top of the 11th to give NSU a 2-1 win past Embry-Riddle... FEBRUARY 25: Love, Norris, Groeneveld, Ben Prill and Vaughn each had 2 hits to lead NSU past visiting Trinity International University, 8-1... FEBRUARY 28: Groeneveld's bloop single into left field scored Norris from second base with the winning run in the bottom of the 10th inning, giving the Knights a dramatic come-from-behind 6-5 win past FSC rival Flagler College.

MARCH 1: Gerity had a field day, going a combined 3-for-5 with 2 home runs, 1 double and 7 RBI to lead NSU to a double header sweep (10-1, 11-1) past visiting Flagler College. Both games took just five innings due to the 10-run mercy rule... MARCH 3: Love delivered a 2-out game-winning single to center field to score Shaughn Nichols from second base as the Knights defeated NCAA Division I Monmouth University, 6-5, in 11 innings... MARCH 4: Ryan Anschuetz pitched 8 innings of solid ball to lead the Knights to a 6-3 win past Monmouth. Anschuetz struck out 9 and gave up just 3 earned runs on 7 hits and 3 walks... MARCH 5: Gerity and pitcher Felipe Suarez were named the Florida Sun Conference's Player of the Week and Pitcher of the Week, respectively... MARCH 5: Love, Gerity, Birch and Charles Cerrato all had 2 hits, but the Knights still fell to visiting Concordia University, 6-5... MARCH 7: Dan Zitnick went 7 innings for the Knights, giving up just 3 hits and 1 run while striking out 6 to lead NSU past Madonna University, 2-1... MARCH 9: Despite a 2-for-3 performance from Gerity, NSU fell to host Florida Southern College, 3-1... MARCH 12: Vaughn drove home the winning runs with a 2-out double in the bottom of the eighth inning to give the Knights a dramatic come-from-behind 8-7 win past Montclair State University in Homestead, FL... MARCH 16: Suarez pitched a 2-hit shutout, while Gerity paced NSU's 10-hit attack with 3 hits and 3 RBI, to give the Knights a 6-0 win past Eckerd College in the first game of a double-header. Anschuetz pitched a 2-hit complete game in the nightcap but still lost, 3-2... MARCH 19: Groeneveld went 3-for-5 with 2 RS, and Cuadro, Gerity and Simmons both had 2 hits each, to lead NSU past College of New Jersey, 11-3... MARCH 21: Norris and Love each went batty, going a combined 8-for-11 with 5 RBI and 8 RS to lead the Knights past FSC rival host Warner Southern College, 17-6. Norris went 4-for-6 with 2 home runs, 4 RBI and 4 RS, while Love was 4-for-5 with 4 RS and 1 RBI... MARCH 22: Cuadro drilled a single into left field, scoring Veronesi from second base with the game-winning run, to give NSU a 7-6 win past host Warner Southern in the second game of a double-header. Anschuetz tossed a 5-hitter in the day's opener to give the Knights an 11-3 win... MARCH 25: Sparked by the hitting of Cuadro, Groeneveld and Vaughn, NSU defeated NCAA Division I Brown University, 10-2... MARCH 27: Norris went 4-for-4 with 1 double and 1 RBI, and four other Knights had 2 hits apiece, to lead the Knights past Brown University, 10-5... MARCH 28: Cerrato delivered a two-out single in the eighth inning to score

CONTINUED ON NEXT PAGE



# A look back: The 1996-97 baseball season...

CONTINUED FROM PREVIOUS PAGE

Simmons from second as NSU rallied to defeat visiting Dominican College, 10-9, giving the Knights seven consecutive wins.

APRIL 1: No joke, the Knights learned that they had moved up to a No. 11 NAIA national ranking, and they trashed visiting Spring Arbor College, 14-3. Zitnick and Bennett combined on a 4-hitter to lead NSU... APRIL 2: Shaughn Nichols, pinch-hitting for Mickey Cuadro, hit a solo home run in the bottom of the 10th inning to give the host Knights a 4-3 win past Trinity International University... APRIL 4: Suarez and Groeneveld led NSU to its 9-4 win past FSC rival Northwood University at home, Groeneveld connecting for a grand slam and Suarez striking out 9 en route to his eighth win of the season... APRIL 11: NSU moved up to No. 9 in the polls, yet fell to host Webber College, 4-1, in an FSC game. Both Cuadro and Groeneveld had 3 hits apiece in the loss... APRIL 12: Reliever John Hassel set a new NSU baseball record by notching his 13th save of the season in NSU's 5-3 win past host Webber College, breaking the old mark of 12 set in 1994 by Steve Harvey. However, NSU fell in Game 2 of the double-header, 6-2... APRIL 15: Vaughn was named the Florida Sun Conference's Player of the Week... APRIL 18: Vaughn squeezed home the winning run in the bottom of the ninth as NSU defeated visiting Florida Memorial College, 4-3... APRIL 19: NSU swept a doubleheader against Florida Memorial, 5-0 and 6-3. Anschuetz threw a six-hit complete game shutout in the opener to improve his season mark to 7-3, while Zitnick went 5.1 innings, giving up just 4 hits, 1 earned run and 6 strikeouts... APRIL 21: The Knights defeated Lynn University, 4-0, as Hassel started for the Knights and earned his fifth win of the year against zero losses... APRIL 25: Anschuetz was named both the FSC and NAIA Southeast Region Pitcher of the Week thanks to his shutout against Florida Memorial College... APRIL 25: The Knights clinched the conference's regular season title when they defeated host St. Thomas University, 3-2. Suarez picked up his 10th victory going 8 innings, giving up only 5 hits, 2 earned runs, 1 walk and 6 strikeouts... APRIL 26: Capitalizing on 5 NSU errors a day after they clinched the FSC crown, St. Thomas University defeated the Knights, 9-0... APRIL 28: In one of the ugliest games of the year for both teams, host St. Thomas defeated the No. 11 ranked Knights 14-13 (8 innings) in a game that was made up from the previous day's scheduled double-header, which was rained out in the second inning.

MAY 1: Hassel was given the ultimate honor by being named the NAIA's National Pitcher of the Week thanks to a win and a save the previous week, which gave him 14 saves on the year. The Knights also won that day, defeating visiting Palm Beach Atlantic College, 3-2, thanks to Groeneveld singling home Vaughn from second base with the winning run in the bottom of the seventh in a make up rain-delayed game from February 15... MAY 5: Suarez was named the FSC's Player of the Year, while head coach Sonny Hansley was named the conference's Coach of the Year. Other NSU selections included Hassel, Love and Norris... MAY 5: NSU, ranked No. 12, lost 8-1 to Northwood University in the first round of the FSC playoffs... MAY 6: The Knights bounced back to defeat Palm Beach Atlantic College, 6-1, in a conference tourney loser's bracket game. Anschuetz went 8 strong innings and gave up just 5 hits and 1 walk, while striking out 6... MAY 7: Jim Birch singled home Love with the winning run in the bottom of the second as the Knights defeated Webber College, 5-2, in the conference playoffs... MAY 8: NSU fell to rival St. Thomas University, 5-1, in the tournament finals, yet still go to regionals because of its regular season conference title... MAY 14: Led by the pitching of Suarez, the hitting of Groeneveld and DeCastro, and the defense of Love, NSU defeated Huntingdon College, 4-2, in its NAIA Southeast Region opener... MAY 15: Hassel tied the NAIA record by earning his 16th save of the season as the Knights held off St. Thomas, 1-0, to advance in the region's winner's bracket... MAY 16: The Knights got pounded by the nation's top-ranked squad--Brewton Parker--17-2, sending the Knights to the loser's bracket... MAY 16: Love hit a 370-foot solo home run over the right field wall in the top of the seventh to break open a 5-5 tie and lead NSU past Huntingdon, 7-6, in the semifinals of the region tournament... MAY 17: The Knights came up short against Brewton Parker College again, this time falling 7-2 in the region championship round, thus ending the team's season at 43-18.



# Setting the record straight...

## ALL-TIME RECORD VS. OPPONENTS

Air Force	1-1
Allegheny (PA)	3-2
Army	1-0
Barry University	4-12-1
Baruch College	1-0
Bates College	1-0
Boston University	1-0
Bowdoin	1-1
Brewton-Parker College	0-2
Brown University	2-0
Central Connecticut	0-1
Columbia University	1-0
Concordia	4-1
Creighton University	1-0
Detroit, University of	1-0
Dominican College	6-1
Drew University	2-0
East Connecticut State	2-2
East Stroudsburg University	2-2
Eckerd College	10-4
Edward Waters College	12-2
Embry-Riddle Aero. University	17-9
Erskine College	1-0
Faulkner University	2-1
Flagler College	25-12
Florida Atlantic University	5-6-1
Florida Institute of Technology	11-9
Florida Memorial College	29-3
Florida Southern College	1-5
Ft. Lauderdale College	2-0
Glassboro State University	3-2
Georgia College	1-0
Georgia Southwest	1-0
Huntingdon College	2-0
Indiana Wesleyan	1-0
Iona College	2-0
Jersey City State	4-2
John Jay College	3-1
Kennesaw State University	2-3
Lewis (IL)	1-2
Lowell University	2-1
Lynn University	20-17
Madonna	1-0
Mayville State University	1-0
Mercy College	2-0
Miami, University of	0-4
Michigan State	1-0
Monmouth College	5-3
Montclair State University	2-0
Navy	1-1

New Jersey, College of	1-0
New Jersey Tech	3-1
New Paltz-SUNY	1-0
Northeastern University	2-0
North Florida, University of	5-19
Northwood University	15-5
Old Westbury State	1-0
Pace University	1-0
Palm Beach Atlantic College	26-7-1
Pennsylvania University	0-1
Princeton University	1-0
Providence University	2-0
Quinnipiac College	1-0
Ramapo College	3-1
Rollins College	4-2
Rowan (NJ)	2-0
Southern Connecticut	1-1
Southern Maine	4-0
Spring Arbor College	10-1
St. Ambrose University	1-0
St. Thomas University	15-22
Tampa, University of	1-3
Trenton State University	6-3
Trinity International University	8-0
Upsala College	1-0
U.S. Coast Guard	2-1
Villanova University	1-0
Walsh University	1-0
Warner Southern College	23-2
Webber College	10-3
William Patterson	1-0
Wesleyan University (CT)	2-3
<b>OVERALL RECORD</b>	<b>359-191-3</b>

## YEAR-BY-YEAR RESULTS

YEAR	REC	COACH
1988	18-32-0	Sonny Hansley
1989	36-19-1	Sonny Hansley
1990	33-20-1	Sonny Hansley
1991	41-15-0	Sonny Hansley
1992	42-14-0	Sonny Hansley
1993	42-14-0	Sonny Hansley
1994	43-12-0	Sonny Hansley
1995	40-15-0	Sonny Hansley
1996	32-21-1	Sonny Hansley
1997	43-18-0	Sonny Hansley

## COACH RECORDS

YEARS	COACH	REC
1988-present	Sonny Hansley	359-191-3



# Setting the record straight...

## SEASON RECORDS

### INDIVIDUAL/BATTING

#### AT-BATS

226	Claude Love	1997
209	Tony Prieto	1995
203	Claude Love	1995
200	Brian Gerity	1997
200	Ed Scott	1992
200	Steve Rozzo	1990
199	Scott Richard	1992

#### BATTING AVERAGE

.447	Gary Horen	1996
.423	Rich Palumbo	1992
.421	Claude Love	1994
.400	Eric Phillips	1990
.394	Tommy Dong	1994

#### GAMES PLAYED

61	Jose "Mickey" Cuadro	1997
61	Claude Love	1997
61	Brian Norris	1997
60	Mark Groeneveld	1997
60	Charles Vaughn	1997
58	Brian Gerity	1997
56	Shaughn Nichols	1997
56	Rich Palumbo	1992
56	Ed Scott	1992
56	Craig Smith	1992
56	Ed Mackie	1992
56	Chris Todd	1991
55	Claude Love	1995
55	Jerry Simmons	1997
55	Tony Prieto	1995
55	Tony Prieto	1994
55	Sean Dall	1993
55	Chris Todd	1992

#### HITS

82	Claude Love	1997
82	Tony Prieto	1995
82	Claude Love	1994
82	Rich Palumbo	1992
80	Gary Horen	1996
76	Claude Love	1995
76	Tommy Dong	1994
74	Sean Dall	1993
72	Tommy Dong	1993
72	Ed Scott	1992

72	Eric Phillips	1990
----	---------------	------

#### DOUBLES

24	Guillermo Munoz	1991
20	Tommy Dong	1994
19	Claude Love	1997
19	Rich Palumbo	1992
18	Claude Love	1994
18	Chris Todd	1991
17	Eric Phillips	1990

#### TRIPLES

10	Eric Phillips	1990
9	Chris Todd	1992
7	Mark Groeneveld	1996
6	Claude Love	1995
6	Claude Love	1994
6	Rich Palumbo	1992
5	Claude Love	1996
5	Sean Dall	1993
5	Ed Scott	1992
5	Chris Todd	1991

#### HOME RUNS

17	Ed Mackie	1993
14	Scott Richard	1993
13	Rich Palumbo	1992
13	Rich Palumbo	1991
11	Peter Retzko	1993
10	Brian Norris	1997
10	Chris Todd	1991

#### RUNS BATTED IN

80	Rich Palumbo	1992
67	Claude Love	1995
66	Joe Miller	1995
65	Chris Todd	1991
61	Guillermo Munoz	1991

#### RUNS SCORED

73	Rich Palumbo	1992
70	Eric Phillips	1991
68	Eric Phillips	1990
65	Craig Smith	1992
60	Tony Prieto	1995

#### SLUGGING PERCENTAGE

.784	Rich Palumbo	1992
.706	Eric Phillips	1990
.695	Ed Mackie	1993
.694	Chris Todd	1991
.680	Scott Richard	1993



# Setting the record straight...

## INDIVIDUAL/BATTING, CONT.

### STOLEN BASES

38-42	Chris Todd	1992
37-43	Chris Todd	1991
34-38	Tommy Dong	1994
34-38	Craig Smith	1992
33-36	Tommy Dong	1993
32-35	Craig Smith	1990

### TOTAL BASES

152	Rich Palumbo	1992
128	Claude Love	1997
127	Claude Love	1994
127	Chris Todd	1991
127	Eric Phillips	1990
124	Claude Love	1995
121	Ed Mackie	1993
121	Scott Richard	1993

### HIT-BY-PITCH

22	Brian Norris	1997
16	Brian Norris	1996
16	Brian Norris	1995
13	Brian Gerity	1997
10	Randy Bees	1990
9	Jose "Mickey" Cuadro	1997
9	Claude Love	1996

### WALKS

55	Chris Todd	1991
53	Eric Phillips	1989
49	Craig Smith	1992
49	Guillermo Munoz	1991
49	Eric Phillips	1990
48	Chris Todd	1992
44	Tony Prieto	1994
44	Craig Smith	1992
44	Craig Smith	1989

### STRIKEOUTS

64	Ed Mackie	1991
51	Mark Groeneveld	1997
48	Kevin Scott	1996
47	Ed Mackie	1993
46	Charles Vaughn	1997

### SACRIFICE HITS

14	Charlie Fadoul	1994
13	Charlie Fadoul	1995

11	Alex Othon	1994
11	Ed Mackie	1991
10	Mark Groeneveld	1997
10	Donald Machacon	1996
9	Jose "Mickey" Cuadro	1997
9	5 others	

## INDIVIDUAL/FIELDING

### PUTOUTS

466	Gary Horen	1996
448	Scott Richard	1992
437	Scott Richard	1993
422	Joe Miller	1995
392	Joe Miller	1994

### ASSISTS

162	Craig Smith	1992
160	Tony Prieto	1994
154	Tommy Dong	1994
146	Danny Smith	1996
131	Tony Prieto	1995
131	Ed Mackie	1993

### ERRORS

25	Ed Mackie	1993
22	Joe Golinski	1993
22	Tony Prieto	1995
21	Ed Mackie	1992
21	Jerry Simmons	1997
20	Donald Machacon	1996
20	Charlie Fadoul	1994
19	Danny Smith	1996

## INDIVIDUAL/PITCHING

### APPEARANCES

31	Steve Harvey	1990
30	John Hassel	1997
28	Joe Giovinco	1991
26	Robert Cancel	1992
25	Robert Cancel	1995
25	Robert Cancel	1993

### RELIEF APPEARANCES

31	Steve Harvey	1990
28	Joe Giovinco	1991
27	John Hassel	1997
27	Steve Harvey	1989
26	Robert Cancel	1992



# Setting the record straight...

## INDIVIDUAL/PITCHING, CONT.

25 Robert Cancel 1993

### STARTS

18 Vince Kelly 1990  
 17 Vince Kelly 1991  
 16 Ryan Anschuetz 1997  
 16 Felipe Suarez 1997  
 16 Vince Kelly 1992  
 16 Raybel Lopez 1992  
 16 Joe Van Valkenburg 1989  
 15 Raul De La Osa 1995  
 15 Tommy Iannarone 1989  
 14 Ryan Anschuetz 1996  
 14 Mike Chismar 1995

### COMPLETE GAMES

10 Donovan Todd 1994  
 8 Mike Chismar 1995  
 8 Raul De La Osa 1995  
 7 Felipe Suarez 1997  
 7 Felipe Suarez 1996  
 7 Donovan Todd 1993  
 6 Robert Cancel 1995  
 6 Vince Kelly 1992  
 6 Vince Kelly 1991

### VICTORIES

13 Vince Kelly 1991  
 12 Mike Chismar 1995  
 11 Felipe Suarez 1997  
 11 Raybel Lopez 1992  
 11 Joe Van Valkenburg 1991  
 10 Tommy Lee 1994  
 10 Donovan Todd 1994  
 10 Donovan Todd 1993

### LOSSES

9 Bob Deutschman 1988  
 6 Ryan Anschuetz 1996  
 6 Robert Cancel 1995  
 6 Donovan Todd 1994  
 6 Vince Kelly 1992  
 6 Vince Kelly 1990  
 5 Felipe Suarez 1997

### SAVES

16 John Hassel 1997  
 12 Steve Harvey 1989

10 Robert Cancel 1993  
 9 Steve Harvey 1990  
 8 Larry Collins 1996  
 8 Robert Cancel 1995  
 8 Robert Cancel 1994

### SHUTOUTS

3 Tommy Lee 1994  
 3 Donovan Todd 1994  
 3 Vince Kelly 1991  
 2 Felipe Suarez 1997  
 2 Mike Chismar 1995  
 2 Mike Chismar 1994  
 2 Donovan Todd 1993  
 2 Joe Van Valkenburg 1991

### INNINGS PITCHED

124.0 Felipe Suarez 1997  
 116.0 Vince Kelly 1990  
 115.0 Vince Kelly 1991  
 112.1 Mike Chismar 1995  
 110.2 Vince Kelly 1992

### FEWEST RUNS ALLOWED

RA	IP	PLAYER	YEAR
10	29.1	Robert Cancel	1993
12	33.2	Scott Birchler	1993
15	49.0	David Gates	1997
15	26.1	Ricky Wolfer	1997
15	35.1	David Knierim	1992
15	26.7	Frank Taylor	1990

### MOST RUNS ALLOWED

90	103.0	Bob Deutschman	1988
90	93.0	Joe VanValkenburg	1988
82	49.0	Tom Sheridan	1988
78	84.0	Frank Taylor	1991
77	115.1	Vince Kelly	1991
68	84.0	Raybel Lopez	1991

### FEWEST EARNED RUNS ALLOWED

ERA	IP	PLAYER	YEAR
1.57	74.1	Paul De La Osa	1994
2.21	89.2	Tommy Lee	1994
2.31	105.1	Ryan Anschuetz	1997
2.31	70.0	Mike Chismar	1994
2.34	104.0	Donovan Todd	1994

### MOST EARNED RUNS ALLOWED

11.45	22.0	Shannon Scalzi	1997
-------	------	----------------	------



# Setting the record straight...

## INDIVIDUAL/PITCHING, CONT.

### STRIKEOUTS

SO	IP	PLAYER	YEAR
124	100.0	Robert Cancel	1995

### FEWEST WALKS ALLOWED

12	73.0	Al McNutty	1993
17	49.0	David Gates	1997
17	97.2	Donovan Todd	1993
18	63.0	Steve Harvey	1989
19	75.1	Joe Van Valkenburg	1991
20	89.2	Tommy Lee	1994

### HITS ALLOWED

141	Bob Deutschman	1988
106	Vince Kelly	1990
100	Ryan Anschuetz	1996
98	Felipe Suarez	1997
98	Vince Kelly	1992
93	Mike Chismar	1995
93	Joe Van Valkenburg	1988

### HIT BATTERS

15	Vince Kelly	1992
10	Ryan Anschuetz	1997
10	Paul De la Osa	1994
10	Raybel Lopez	1991
8	Felipe Suarez	1997
8	Raybel Lopez	1992
8	Vince Kelly	1991
8	Vince Kelly	1990
8	Tommy Iannarone	1990

### WILD PITCHES

9	Raybel Lopez	1991
9	Steve Caruso	1990
8	Ryan Anschuetz	1997
8	Matt Bennett	1997
8	Mike Chismar	1995
8	Mike Chismar	1994
8	Vince Kelly	1990

### WINNING PERCENTAGE (MIN. 14 DEC)

.787	11-3	Raybel Lopez	1992
.765	13-4	Vince Kelly	1991
.750	10-3-1	Tommy Iannarone	1989
.688	11-5	Felipe Suarez	1997
.625	10-6	Donovan Todd	1994

### LOWEST EARNED RUN AVG (MIN 40 IP)

1.57	Paul De La Osa	1994
1.98	Joe VanValkenburg	1991
1.99	Todd Mathis	1992
2.10	Steve Harvey	1989
2.21	Dennis Grants	1993
2.21	Tommy Lee	1994

## CAREER RECORDS

### BATTING

#### AT-BATS

824	Claude Love	1993-97
725	Steve Rozzo	1988-91
671	Craig Smith	1989-92
557	Brian Norris	1995-97
513	Mark Groeneveld	1995-

#### BATTING AVERAGE

AVG	PLAYER	AB	YEARS
.442	Gary Horen	215	95-96
.384	Tommy Dong	385	93-94
.372	Rich Palumbo	363	91-92
.366	Eric Phillips	645	88-91
.363	Claude Love	824	93-97
.361	Tony Prieto	402	94-95
.349	Joe Miller	413	92-95
.342	Darin Eehalt	360	88-89
.342	Scott Richard	377	92-93
.341	Craig Smith	671	89-92
.325	Brian Norris	551	95-97

#### GAMES PLAYED

226	Claude Love	1993-97
196	Alex Othon	1992-95
189	Eric Phillips	1988-91
168	Brian Norris	1995-97
165	Ed Mackie	1991-93

#### HITS

299	Claude Love	1993-97
179	Brian Norris	1995-97
175	Alex Othon	1992-95
162	Ed Mackie	1991-93
148	Mark Groeneveld	1995-
148	Tommy Dong	1993-94

#### DOUBLES

63	Claude Love	1993-97
48	Eric Phillips	1988-91



# Setting the record straight...

## BATTING/CAREER, CONT.

36	Tommy Dong	1993-94
35	Alex Othon	1992-95
35	Ed Mackie	1991-93
34	Guillermo Munoz	1990-91

### TRIPLES

25	Eric Phillips	1988-91
21	Claude Love	1993-97
14	Chris Todd	1991-92
9	Rich Palumbo	1991-92
8	Craig Smith	1990-92

### HOME RUNS

27	Ed Mackie	1991-93
26	Rich Palumbo	1991-92
25	Claude Love	1993-97
24	Brian Norris	1995-97
18	Scott Richard	1992-93

### RUNS BATTED IN

216	Claude Love	1993-97
139	Ed Mackie	1991-93
139	Eric Phillips	1988-91
132	Rich Palumbo	1991-92
131	Joe Miller	1992-95
127	Brian Norris	1995-97

### RUNS SCORED

233	Eric Phillips	1988-91
200	Claude Love	1993-97
199	Craig Smith	1989-92
177	Steve Rozzo	1988-91
140	Brian Norris	1995-97

### SLUGGING PERCENTAGE

.722	Rich Palumbo	1991-92
.626	Eric Phillips	1990-91
.601	Chris Todd	1991-92
.586	Scott Richard	1992-93
.579	Claude Love	1993-97

### STOLEN BASES

92	Eric Phillips	1988-91
84-98	Claude Love	1993-97
79-90	Craig Smith	1990-92
75-85	Chris Todd	1991-92
67-74	Tommy Dong	1993-94

### TOTAL BASES

477	Claude Love	1993-97
292	Brian Norris	1995-97
282	Ed Mackie	1991-93
255	Alex Othon	1992-95
226	Joe Miller	1992-95

### HIT-BY-PITCH

54	Brian Norris	1995-97
24	Claude Love	1993-97
18	Brian Gerity	1994-97
15	Joe Miller	1992-95
15	Randy Bees	1990-91
10	Mark Groeneveld	1995-
10	Tommy Dong	1993-94
10	Ed Mackie	1991-93

### WALKS

164	Craig Smith	1989-92
162	Eric Phillips	1988-91
119	Steve Rozzo	1988-91
116	Claude Love	1993-97
103	Chris Todd	1991-92

### STRIKEOUTS

154	Ed Mackie	1991-93
126	Mark Groeneveld	1995-
116	Alex Othon	1992-95
88	Brian Norris	1995-97
82	Brian Gerity	1994-97

### SACRIFICE HITS

27	Charlie Fadoul	1994-95
26	Claude Love	1993-97
25	Alex Othon	1992-95
21	Joe Miller	1992-95
19	Brian Norris	1995-97

## PITCHING/CAREER

### APPEARANCES

96	Robert Cancel	1992-95
56	Vince Kelly	1990-92
47	John Hassel	1996-
39	Joe Giovinco	1990-91
38	Ricky Wolfer	1995-97
38	Larry Collins	1995-96

### RELIEF APPEARANCES

80	Robert Cancel	1992-95
----	---------------	---------



# Setting the record straight...

## PITCHING/CAREER, CONT.

58	Steve Harvey	1989-90
44	John Hassel	1996-
35	Ricky Wolfer	1995-97
35	Joe Giovinco	1990-91
32	Larry Collins	1995-96

### STARTS

63	Vince Kelly	1989-92
36	Joe Van Valkenburg	1989-91
30	Ryan Anschuetz	1996-97
29	Felipe Suarez	1996-
29	Raybel Lopez	1991-92
28	Raul De La Osa	1994-95

### COMPLETE GAMES

17	Donovan Todd	1993-94
14	Felipe Suarez	1996-
13	Vince Kelly	1990-92
12	Mike Chismar	1994-95
11	Raul De La Osa	1994-95

### VICTORIES

36	Vince Kelly	1989-92
20	Mike Chismar	1994-95
20	Donovan Todd	1993-94
19	Felipe Suarez	1996-
19	Raybel Lopez	1991-92
18	Tommy Lee	1993-94
17	Raul De La Osa	1994-95

### LOSSES

20	Vince Kelly	1989-92
15	Bob Deutschman	1988-91
10	Ryan Anschuetz	1996-97
10	Robert Cancel	1992-95
9	Felipe Suarez	1996-

9	Donovan Todd	1993-94
7	Dan Zitnick	1996-97
7	Raul De La Osa	1994-95
7	Raybel Lopez	1991-92
5	Larry Collins	1995-96

### SAVES

33	Robert Cancel	1992-95
21	Steve Harvey	1989-90
16	John Hassel	1996-97
9	Larry Collins	1995-96

9	Randy Bees	1988-89
7	Joe Giovinco	1990-91

### SHUTOUTS

5	Donovan Todd	1993-94
5	Vince Kelly	1989-92
4	Mike Chismar	1994-95
4	Tommy Lee	1993-94
3	Felipe Suarez	1996-

### INNINGS PITCHED

426.0	Vince Kelly	1989-92
325.0	Joe VanValkenburg	1988-91
216.1	Robert Cancel	1992-95
208.2	Felipe Suarez	1996-
204.0	Raybel Lopez	1991-92
204.0	Bob Deutschman	1988-91

### MOST RUNS ALLOWED

RA	IP	PLAYER	YEAR
278	325.1	Joe VanValkenburg	1988-91
259	426.0	Vince Kelly	1989-92
172	204.0	Bob Deutschman	1988-91
119	137.2	Frank Taylor	1989-91
111	204.0	Raybel Lopez	1991-92

### STRIKEOUTS

SO	IP	PLAYER	YEAR
353	340.2	Vince Kelly	1989-92

### FEWEST WALKS ALLOWED

BB	IP	PLAYER	YEAR
24	66.3	Don Laethem	1994-95
30	108.3	Steve Harvey	1989-90
38	71.3	Larry Collins	1995-96
40	201.2	Donovan Todd	1993-94
49	97.2	David Gates	1996-97

### HITS ALLOWED

345	Vince Kelly	1989-92
314	Joe Van Valkenburg	1988-91
237	Bob Deutschman	1988-91
194	Robert Cancel	1992-95
182	Felipe Suarez	1996-

### HIT BATTERS

31	Vince Kelly	1989-92
18	Raybel Lopez	1991-92
16	Ryan Anschuetz	1996-97
13	David Knierim	1991-93
12	Dan Zitnick	1996-97
12	Joe Giovinco	1990-91



# Setting the record straight...

## PITCHING/CAREER, CONT.

### WILD PITCHES

16	Mike Chismar	1994-95
15	Raybel Lopez	1991-92
13	Vince Kelly	1989-92
11	Robert Cancel	1992-95
11	Tim Ferguson	1993-94
11	Joe Giovinco	1990-91
10	Dennis Grants	1991-93

### WINNING PERCENTAGE (MIN. 14 DEC.)

.909	20-2	Mike Chismar	1994-95
.857	18-3	Tommy Lee	1993-94
.731	19-7	Raybel Lopez	1991-92
.717	16-6-1	Tommy Iannarone	1989-90
.708	17-7	Paul De La Osa	1994-95

### LOWEST EARNED RUN AVG (40+IP)

2.14	Paul De La Osa	1994-95
2.33	Ryan Anschuetz	1996-97
2.42	Tommy Lee	1993-94
2.49	Steve Harvey	1989-90
2.50	Donovan Todd	1993-94

## FIELDING/CAREER

### PUTOUTS

897	Joe Miller	1992-95
885	Scott Richard	1992-93
873	Brian Gerity	1994-97
628	Ryan Nash	1992-95
504	Gary Horen	1995-96

### ASSISTS

314	Brian Norris	1995-97
207	Donald Machacon	1995-96
191	Tony Prieto	1994-95
183	Danny Smith	1995-96
162	Craig Smith	1990-92

### ERRORS

46	Ed Mackie	1992-93
39	Tony Prieto	1994-95
35	Brian Norris	1995-97
32	Donald Machacon	1995-96
22	Danny Smith	1995-96

## TEAM OVERALL RECORDS

### MOST VICTORIES

43	43-18	1997
43	43-12	1994
42	42-12	1993
42	42-12	1992
41	41-15	1991
40	40-15	1995
36	36-19-1	1989

### MOST LOSSES

32	18-32	1988
21	32-21-1	1996
20	33-20	1990
19	36-19-1	1989
18	43-18	1997

### BEST WON LOST RECORD

.782	43-12	1994
.754	43-18	1997
.750	42-14	1992
.750	42-12	1993
.732	41-15	1991
.727	40-15	1995

### MOST GAMES

GP	REC	YEAR
61	43-18-0	1997
56	42-14-0	1992
56	36-19-1	1989
55	43-12-0	1994
55	40-15-0	1995
54	32-21-1	1996
50	18-32	1988

## TEAM BATTING

### BEST BATTING AVERAGE

AVG	GP	YEAR
.330	55	1994
.328	56	1992
.328	56	1991
.325	55	1995
.313	56	1993
.308	50	1988



# Setting the record straight...

## TEAM BATTING, CONT.

HITS	YEAR
HITS/GP	
608/56	1992
578/56	1991
566/55	1995
553/61	1997
548/55	1994

DOUBLES	YEAR
DBLS/GP	
116/56	1992
116/56	1991
103/55	1995
101/56	1993
98/56	1989
95/55	1994

TRIPLES	YEAR
TRPLS/GP	
41/56	1992
21/56	1991
19/55	1994
17/55	1995
17/54	1990
17/54	1996
17/56	1993
16/61	1997

HOME RUNS	YEAR
HR/GP	
63/56	1993
56/56	1997
48/56	1992
42/61	1997
41/54	1996

RUNS BATTED IN	YEAR
RBI/GP	
473/56	1992
448/56	1991
386/55	1995
356/56	1993
348/55	1994

TOTAL BASES	YEAR
TB/GP	
950/56	1992
904/56	1991

851/56	1993
817/55	1995
802/61	1997

SLUGGING PERCENTAGE	YEAR
PCT AB BASES/GP	
.513 1852 950/56	1992
.512 1764 904/56	1991
.505 1686 851/56	1993
.473 1662 786/55	1994
.470 1739 817/55	1995

STOLEN BASES	YEAR
SB/SBA GP	
159/177 56	1992
124/155 56	1991
118/140 54	1990
113/142 56	1993
102/129 55	1995

STOLEN BASES-BEST PERCENTAGE	YEAR
PCT SB/SBA GP	
.898 159/177 56	1992
.843 118/140 54	1990
.800 124/155 56	1991
.800 84/105 54	1996
.796 113/142 56	1993
.791 102/129 55	1995

SACRIFICE HITS	YEAR
SAC GP	
78 55	1994
74 55	1995
73 61	1997
63 56	1991
62 56	1993

HIT BATSMEN	YEAR
HBP GP	
76 61	1997
51 54	1996
48 55	1995
48 55	1994
39 54	1990

## TEAM PITCHING

COMPLETE GAMES	YEAR
CG GP	
26 55	1995



# Setting the record straight...

## TEAM PITCHING, CONT.

20	55	1994
16	54	1996
16	56	1992
16	56	1991
14	56	1993
13	61	1997

### INNINGS PITCHED

IP	GP	YEAR
499.2	61	1997
459.7	54	1990
459.0	56	1989
457.0	56	1992
452.3	56	1991

### RUNS ALLOWED-FEWEST

RS	GP	YEAR
194	55	1994
196	56	1993
211	55	1995
218	56	1992
237	56	1991

### RUNS ALLOWED-MOST

RS	GP	YEAR
428	50	1988
300	56	1989
294	54	1990
261	61	1997
249	54	1996

### EARNED RUNS ALLOWED-FEWEST

ERA	GP	YEAR
2.43	55	1994
2.77	56	1993
3.06	55	1995
3.23	56	1992
3.58	56	1991

### STRIKEOUTS

SO	GP	YEAR
436	61	1997
423	55	1995
366	54	1996
337	56	1992
336	56	1991
336	55	1994

### WALKS ALLOWED-FEWEST

BB	GP	YEAR
143	55	1994
161	55	1995
164	56	1993
206	54	1996
242	56	1989
242	61	1997

### WALKS ALLOWED--MOST

BB	GP	YEAR
297	50	1988
275	56	1991
245	56	1992
243	54	1990
242	56	1989
242	61	1997

### HITS ALLOWED-FEWEST

H	GP	YEAR
363	56	1993
364	55	1994
382	56	1991
393	56	1989
395	56	1992

### HITS ALLOWED-MOST

H	GP	YEAR
523	50	1988
449	54	1996
446	61	1997
437	54	1990
414	55	1995

### HIT BATSMEN-SEASON

HBP	GP	YEAR
45	56	1992
44	56	1991
40	54	1990
36	54	1996
36	61	1997
31	55	1994

### WILD PITCHES

WP	GP	YEAR
39	56	1991
34	61	1997
28	56	1993
27	54	1996
26	55	1994



# Setting the record straight...

## TEAM PITCHING, CONT.

### SHUTOUTS

SH	GP	YEAR
12	55	1994
11	56	1991
11	56	1993
9	55	1995
7	56	1992
6	61	1997

### EARNED RUN AVERAGE-LOWEST

ERA	GP	YEAR
2.43	55	1994
2.77	56	1993
3.06	55	1995
3.23	56	1992
3.58	56	1991

### EARNED RUN AVERAGE-HIGHEST

ERA	GP	YEAR
8.05	50	1988
4.10	56	1989
3.76	54	1990
3.67	54	1996
3.62	61	1997

## TEAM FIELDING

### PUTOUTS

PO	GP	YEAR
1499	61	1997

1371	56	1992
1333	55	1995
1311	55	1994
1306	56	1993

### ASSISTS

ASTS	GP	YEAR
614	61	1997
589	54	1996
573	56	1992
548	55	1994
543	56	1993

### ERRORS

E	GP	YEAR
97	56	1993
94	61	1997
93	55	1994
93	56	1992
92	55	1995
87	55	1996

### DOUBLE PLAYS

DP	GP	YEAR
41	54	1996
33	55	1994
32	61	1997

### FIELDING AVERAGE

AVG	GP	YEAR
.957	61	1997
.956	55	1996
.954	56	1992
.953	55	1995
.952	55	1994

**SPALDING®**  
**TOP FLITE®**  
**PRO**



## About the Florida Sun Conference...

The Florida Sun Conference (FSC) is one of the newest intercollegiate athletic conferences in the National Association of Intercollegiate Athletics (NAIA). The conference consists of nine colleges and universities and spans across the entire state of Florida.

The Florida Sun Conference is comprised of Embry-Riddle Aeronautical University, Flagler College, Florida Memorial College, Northwood University, Nova Southeastern University, Palm Beach Atlantic College, St. Thomas University, Warner Southern College and Webber College.

The institutions in the conference believe in strong educational commitment combined with balanced athletic competition. In just seven years of existence, four different FSC institutions have received the Conference All Sports trophy signifying achievement in their overall athletic program--with Nova Southeastern University leading the way with three in a row, and four in the last five years.

Originally formed in March of 1990 as the Florida Intercollegiate Athletic Conference, the FSC was established as a conference for small independent colleges and universities within the NAIA. The conference name was changed in 1992 to its current name.

The league sponsors championships in the following men's sports: baseball, basketball, cross country, golf, soccer and tennis. The FSC also sponsors championships in the following women's sports: basketball, cross country, soccer, softball, tennis and volleyball.

In its six short years of existence, the FSC has quickly established post-season tradition with automatic NAIA Tournament bids to the conference champion in baseball, men's basketball, volleyball and soccer. Also, Florida Sun Conference teams are frequently found in the NAIA Top 25 National Polls in all sports. Individually speaking, athletes from the FSC have proven themselves worthy of national recognition year after year.

In addition to recognizing outstanding achievements on the playing fields in all 12 sports, the conference also recognizes achievement in the classroom. Each year an Academic All-Florida Sun Conference Team is selected. Last year, 102 athletes throughout the nine conference institutions received the award. The Athletic Directors of the nine member institutions serve as the Florida Sun Conference Board of Directors.



## About the NAIA...

The National Association of Intercollegiate Athletics (NAIA) is a completely autonomous association currently administering intercollegiate athletic programs to approximately 400 fully-accredited colleges and universities, more than 30 percent of all four-year collegiate athletic programs in the United States. The Association has member colleges in 47 of the 50 states and in British Columbia. The organization is responsibly governed by a 32-member Council of Presidents.

The Association administers 24 separate championships in 13 sports. Approximately 66,000 student-athletes participate annually in NAIA-sanctioned varsity athletic programs.

The National Association of Intercollegiate Athletics stands prepared to administer programs and championships which provide "education through athletics" for each and every NAIA student-athlete. The future of 66,000 young people is too important to handle any other way.



National Association of Intercollegiate Athletics  
6120 South Yale Ave., Suite 1450  
Tulsa, OK 74136-4223  
(918) 494-8828











**NOVA**  
SOUTHEASTERN  
UNIVERSITY

DEPARTMENT OF ATHLETICS  
3301 College Avenue  
Fort Lauderdale, Florida 33314-7796