

2004

## Bachelor of Health Science

Nova Southeastern University

Follow this and additional works at: [https://nsuworks.nova.edu/hpd\\_coursecatalogs](https://nsuworks.nova.edu/hpd_coursecatalogs)

 Part of the [Medicine and Health Sciences Commons](#)

---

### NSUWorks Citation

Nova Southeastern University, "Bachelor of Health Science" (2004). *Health Professions Divisions Course Catalogs*. 289.  
[https://nsuworks.nova.edu/hpd\\_coursecatalogs/289](https://nsuworks.nova.edu/hpd_coursecatalogs/289)

This Program Overview is brought to you for free and open access by the NSU Course Catalogs and Course Descriptions at NSUWorks. It has been accepted for inclusion in Health Professions Divisions Course Catalogs by an authorized administrator of NSUWorks. For more information, please contact [nsuworks@nova.edu](mailto:nsuworks@nova.edu).

HEALTH PROFESSIONS DIVISION 2004



# bachelor of health science

college of allied health  
and nursing



HEALTH  
PROFESSIONS  
DIVISION

TERRY BUILDING

# nova southeastern university

Nova Southeastern University, synonymous with dynamic innovation and intellectual challenge, is the largest independent not-for-profit university in the southeast, and with an enrollment of approximately 21,000, is the 12th largest in the United States. Situated on a beautiful 300-acre campus in Fort Lauderdale, Florida, the university is experiencing a sustained period of academic growth, fiscal strength, and commitment to the challenges of the 21st century.

In this environment of expansion and stability, the university is capitalizing on its strengths in such areas as academic innovation, comprehensive clinical training, and flexible educational delivery systems.

Founded in 1964 as Nova University, the institution merged with Southeastern University of the Health Sciences in 1994, creating Nova Southeastern University. To date, the institution has graduated more than 74,000 alumni. Fully accredited by the Commission on Colleges of the Southern Association of Colleges and Schools, the university awards associate's, bachelor's, master's, educational specialist, and doctoral degrees in a wide range of fields including the health professions, law, business, marine sciences, psychology, social sciences, computer and information sciences, and education.

The university's programs are administered through 15 academic centers that offer courses at the main campus and at field-based locations throughout Florida; across the nation; and at selected international sites in Europe, Canada, the Pacific Rim, Central and South America, and the Caribbean.

With a budget of more than \$220 million a year and an upward trend in enrollment, the university will continue to maintain a solid record of academic and fiscal strength and excellence in teaching and community service, while expanding its mission in research and scholarship.

## nsu mission statement

**Nova Southeastern University is a dynamic, not-for-profit independent institution dedicated to providing high-quality educational programs of distinction from preschool through the professional and doctoral levels, as well as service to the community. Nova Southeastern University prepares students for lifelong learning and leadership roles in business and the professions. It offers academic programs at times convenient to students, employing innovative delivery systems and rich learning resources on campus and at distant sites. The university fosters inquiry, research, and creative professional activity by uniting faculty and students in acquiring and applying knowledge in clinical, community, and professional settings.**

# health professions division

As a student in the Health Professions Division of Nova Southeastern University, you can anticipate a remarkable experience. You will train, study, interact, and share faculty and resources (either campus-based or online) with students from various backgrounds and disciplines. This interdisciplinary approach distinguishes the Health Professions Division as unique and will better prepare you to master your discipline with a sensitivity and understanding of the entire health care system.

The Health Professions Division, with a student body of more than 2,500, is home to six colleges. The College of Osteopathic Medicine, the first one in the southeastern United States, grants the doctor of osteopathic medicine (D.O.) degree. The College of Osteopathic Medicine also awards the master of public health degree (M.P.H.). The College of Pharmacy offers the doctor of pharmacy (Pharm.D.) degree to traditional, international, and postbaccalaureate students. The College of Optometry is the only institution in the state of Florida that awards the doctor of optometry (O.D.) degree as well as the master in clinical vision research (M.S.). The College of Allied Health and Nursing offers a bachelor of science in nursing, a dual-degree physician assistant program that awards the bachelor of science/master of medical science (B.S./M.M.S.) degrees, and a master of occupational therapy degree (M.O.T.), as well as the entry-level doctor of physical therapy (D.P.T.) degree. Doctoral programs are also offered in occupational therapy

(Ph.D./O.T., O.T.D.), physical therapy (Ph.D./P.T., D.P.T.), and audiology (Au.D.). In addition to these programs, the College of Allied Health and Nursing offers the master of medical science (M.M.S.), the bachelor of health science (B.H.Sc.), and doctor of health science (D.H.Sc.) degrees open to midlevel



clinicians and allied health professionals. The College of Medical Sciences grants the master of biomedical sciences (M.B.S.) degree. In the fall of 1997, the College of Dental Medicine admitted its charter class into the doctor of dental medicine (D.M.D.) program.

The Health Professions Division occupies a \$70 million complex, covering 21 acres of the university campus. The division includes eight buildings totaling more than 900,000 square feet of space for classrooms, laboratories, offices, the Health Professions Division Library, an outpatient health center, and a pharmaceutical care center. The adjacent 1,500-vehicle parking garage overlooks the Miami Dolphins Training Camp.

This brochure is for information purposes only and does not represent a contract. Information contained herein is subject to change at any time by administrative decision on the direction of the board of trustees.

# letter from the chancellor



If you wish to be a leader in the health professions, Nova Southeastern University can help you reach your potential.

The Health Professions Division is unique in that it has been developed as an interdisciplinary educational center from its inception. The division was founded on the concept that the interdisciplinary approach to education is beneficial to students of all professions, and by preparing students to work effectively with health care providers from different fields, barriers are broken and patient care is enhanced.

In less than two decades, NSU's Health Professions Division has developed into a multidisciplinary academic health center of international stature. Composed of the Colleges of Osteopathic Medicine, Pharmacy, Dental Medicine, Optometry, Allied Health and Nursing, and Medical Sciences, the Health Professions Division has redoubled its commitment to academic excellence, innovation, and community service, while expanding its mission in research and scholarship. Working together, our distinguished faculty members prepare students for an exciting career on tomorrow's dynamic health care team.

A handwritten signature in black ink that reads "Morton Terry". The signature is fluid and cursive.

Morton Terry, D.O., M.Sc., FACOI  
Chancellor



# bachelor of health science program (b.h.sc.)

The Bachelor of Health Science (B.H.Sc.) Program is an online degree advancement program for graduates from associate degree, diploma, or certificate programs in the health sciences such as military-trained health care technicians, radiology technicians, respiratory therapists, etc. The NSU B.H.Sc. course of study is interdisciplinary and is designed to provide career and academic advancement for health care practitioners by delivering a well-rounded generalist curriculum. This cutting-edge program offers the opportunity for members of numerous health care occupations to complete their undergraduate degree while they continue to work.

There have been dramatic changes in the health care market and delivery systems in the United States over the past decade. As health care becomes increasingly competitive, it becomes more important for students to stand out both professionally and academically. The online Bachelor of Health Science Program is offered via NSU College of Allied Health and Nursing's state-of-the-art, Web-based distance learning technology. It is designed so that students can complete their coursework online from their own home or office, without compromising career or other obligations.

Upon successful completion of the B.H.Sc. program, students are eligible to apply for admission to continue their education in health sciences in the master's degree program, and later, in the Doctor of Health Science (D.H.Sc.) Program. These are online degree programs. The M.M.S. has no residency requirement, while the D.H.Sc. has a requirement for students to complete two one-week summer institutes.

The Bachelor of Health Science Program is an established program within NSU's College of Allied Health and Nursing. The B.H.Sc. Program was officially approved by the NSU board of trustees in November 2002 on recommendation from the NSU New Program Review Committee.

Nova Southeastern University is accredited by the Commission on Colleges of the Southern Association of Colleges and Schools (1866 Southern Lane, Decatur, Georgia 30033-4097, Telephone number: 404-679-4501) to award associate's, bachelor's, master's, educational specialist, and doctoral degrees. ■ Nova Southeastern University admits students of any race, color, sex, age, nondisqualifying disability, religion or creed, or national or ethnic origin to all the rights, privileges, programs, and activities generally accorded or made available to students at the school, and does not discriminate in administration of its educational policies, admissions policies, scholarship and loan programs, and athletic and other school-administered programs.

## nsu college of allied health and nursing mission statement

**In the spirit of improving and maintaining optimum health conditions in the community, the College of Allied Health and Nursing prepares professionals with the skills necessary for the diagnosis, treatment and prevention of diseases, for the support of the populace in maintaining proper health and safety, for the management of rehabilitative processes, and for the education of the community in understanding the interdependency of health, environment, social and political factors. The College of Allied Health and Nursing endeavors to train both graduate and undergraduate professionals in the arts of improving the quality of life in the community.**

## letter from the dean

The health care marketplace is undergoing rapid change. The pace of this change has provided a formidable challenge for institutions that provide the educational programs for future health care professionals.



Nova Southeastern University's College of Allied Health and Nursing is committed to providing the highest quality of education to students in a variety of health care disciplines, including occupational therapy, physical therapy, and physician assistant studies, as well as audiology and the newly added nursing program. In addition, the college is committed to a life-long learning philosophy through the Master of Medical Science Program, the Ph.D. in physical therapy, and the O.T.D. and Ph.D. in occupational therapy, as well as the recent additions of the bachelor of health science (B.H.Sc.), doctor of health science (D.H.Sc.), and transition doctor of physical therapy (T-D.P.T.). These new degrees for practicing health care professionals are delivered through the use of innovative distance technology.

The College of Allied Health and Nursing is committed to providing health care educational opportunities in formats that meet the needs of prospective students in the community and adequately prepare graduates to assume greater leadership roles in health care delivery systems.

A handwritten signature in black ink that reads "Richard E. Davis". The signature is written in a cursive, flowing style.

Richard E. Davis, PA-C, Ed.D.

Dean, College of Allied Health and Nursing

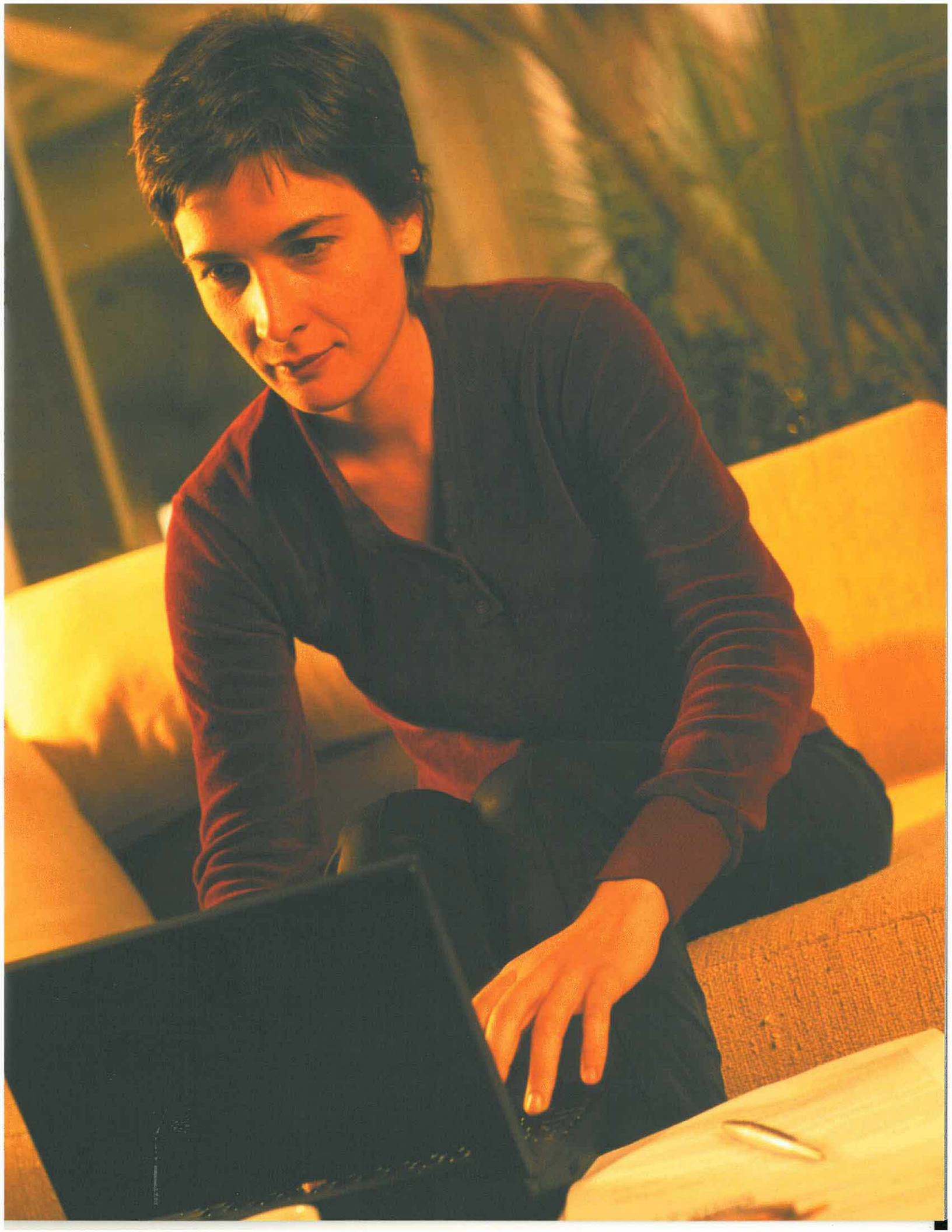


# curriculum overview

The B.H.Sc. curriculum is designed to build upon the existing knowledge base of the health care professional while focusing on the overall health care picture. Leadership, diversity, and conflict resolution are but a few of the areas covered in the curriculum.

The B.H.Sc. program is designed for completion in a distance-learning format and requires no on-campus time. The coursework is professor-paced, using state-of-the-art Web-based delivery. The curriculum and coursework follow a standard 12-week semester calendar.

In order to be eligible to graduate with the B.H.Sc. degree, a student must have completed a minimum total of 120 semester hours. These semester hours consist of a minimum of 30 semester hours of coursework (including 21 semester hours of required core coursework) that must be completed through the NSU B.H.Sc. program; 45 semester hours of open electives drawn from prior education, experience, or B.H.Sc. electives; and 45 semester hours of general education coursework. If the general education requirements are not met at the time of admission to the program, they can be obtained concurrently while enrolled in the B.H.Sc. A student can obtain and transfer these general education courses through NSU's Farquhar College of Arts and Sciences or another regionally accredited college or university. General education courses must have a minimum grade of a C in order to be accepted for transfer credit.





# curriculum outline

## required general education courses

REQUIRED SEMESTER HOURS

Written Communication	.6
Oral Communication	.3
Mathematics	.6
Literature	.3
History	.3
Ethics	.3
Humanities	.6
Social and Behavioral Sciences	.9
Natural and Physical Sciences	.6
<b>Subtotal Required General Education Courses</b>	<b>.45</b>

## required core b.h.sc. courses

REQUIRED SEMESTER HOURS

BHS 3110 Health Care Ethics	.3
BHS 3120 Introduction to Epidemiology	.3
BHS 3150 Principles of Leadership	.3
BHS 3155 Conflict Resolution in Health Care	.3
BHS 3160 Health Policy	.3
BHS 4000 Cultural Competency in Health Care	.3
BHS 4100 Academic and Professional Writing	.3
<b>Subtotal Required Core B.H.Sc. Courses</b>	<b>.21</b>

## b.h.sc. elective courses

SEMESTER HOURS

BHS 3100 Current Issues in Health Care	.3
BHS 3101 History of the US Health System	.3
BHS 3130 Research and Design for Health Care	.3
BHS 3140 Health Care Practice	.3
BHS 3151 Health Services Management	.3
BHS 3170 Health Care Delivery Systems	.3
BHS 4005 Alternative Medicine in Health Care	.3
BHS 4010 Health Promotion and Disease Prevention	.3
BHS 4110 Health Care and Aging	.3
BHS 4120 Technology in Health Care	.3
BHS 4130 Internship*	.3
BHS 4140 Independent Study*	.3
<b>Subtotal B.H.Sc. Elective Courses</b>	<b>.Variable based on number of semester hours accepted for transfer (minimum 9)</b>

## open/transfer electives (consist of transfer credits or additional B.H.Sc. elective coursework)

<b>Subtotal Open/Transfer Elective Courses</b>	<b>.45</b>
--	------------

**minimum total degree semester hours required .120**

\* Student must receive departmental and advisor approval in order to be allowed to register for this course

Curriculum subject to change at the discretion and direction of the program

# admission requirements

Prospective B.H.Sc. students are selected by the committee on admissions through consideration of the overall qualities of the applicant. The program will admit mid-level clinicians and allied health professionals with diverse education, work, and life experiences who have demonstrated the capacity to pursue the course of study and increasingly more responsible positions in health care. Areas of consideration include application content, academic record, prior health care experience, letters of evaluation, and personal motivation. In special circumstances, a personal interview with members of the committee may be required (phone interview may be substituted). All interview expenses are the responsibility of the applicant.

All applicants for admission must have

1. an associate degree in a field of health, from a regionally accredited college or university with a minimum cumulative GPA of 2.0 on a 4.0 grading scale

Only courses with a minimum GPA of 2.0 on a 4.0 scale may be considered for possible transfer of credit.

or:

a diploma or certificate of completion in a field of health care, accompanied by a student-prepared learning portfolio requesting assessment of prior experiences for academic credit.

This will describe all traditional, online, military, and other health care education as well as work-related experience and health care related conferences attended. A resume or CV, transcripts, and/or official documentation of attendance must accompany all prior learning portfolios. The admissions committee will review each portfolio to determine the amount of credit given for prior learning.

2. documented evidence demonstrating education or experience in the health care field within the past five years

3. evidence of computer skills through coursework or self-study prior to the end of the first term. Students may obtain instruction through the NSU Student Microcomputer Laboratory or other training facilities

It should be noted that many criteria, in addition to academic credentials, play a role in the admission process for the B.H.Sc. program. While the program allows the student to demonstrate academic capability, it does not assure admission to any professional school. Admission to the B.H.Sc. will not guarantee admission to any other program of Nova Southeastern University.

Upon receipt of the completed application, fees, credentials and transcripts, the admissions officers and the College of Allied Health and Nursing will review all material for evidence of the proper education, training and background to enter the B.H.Sc.

The university reserves the right to modify any requirements on an individual basis as deemed necessary by the dean of the College of Allied Health and Nursing.



# application procedures

Applicants for admission must submit or be responsible for submission of

1. a completed application form along with a \$50 non-refundable application fee
2. two letters of evaluation from individuals (other than relatives) such as academic advisers, professors, clinical or non-clinical supervisors, or community associates
3. official college-, certificate-, and/or diploma-based transcripts from all undergraduate and graduate institutions attended, sent directly from the institution to the Enrollment Processing Services (EPS)
4. a student-prepared learning portfolio requesting assessment of prior experiences for academic credit (only for graduates from programs other than those from regionally accredited colleges or universities)
5. copies of national and/or state professional certification, licensure, or registration, if applicable
6. evaluation of coursework taken at a foreign institution for U.S. institutional equivalence

Foreign coursework must be evaluated by one of the following services:

World Education Services, Inc.  
P.O. Box 745  
Old Chelsea Station  
New York, New York 10113-0745  
(212) 966-6311

Josef Silny & Associates  
P.O. Box 248233  
Coral Gables, Florida 33124  
(305) 273-1616  
(305) 273-1338 (fax)  
[www.jsilny.com](http://www.jsilny.com)

Educational Credential Evaluators  
P.O. Box 514070  
Milwaukee, Wisconsin 53203-3470  
(414) 289-3400  
[www.ece.org](http://www.ece.org)

7. a complete resume or CV

All admissions information should be sent to

**NOVA SOUTHEASTERN UNIVERSITY**  
Enrollment Processing Services (EPS)  
College of Allied Health and Nursing  
B.H.Sc. Program Admissions  
3301 College Avenue  
P.O. Box 299000  
Fort Lauderdale, Florida 33329-9905  
Phone: (954) 262-1101  
Fax: (954) 262-2282

The B.H.Sc. Office of Admissions works on a rolling admissions basis. Applications are accepted year round. To insure that your application receives prompt consideration, you should apply early.

The B.H.Sc. committee on admissions will not consider an application until all required fees, credentials, transcripts and test scores have been received by the EPS.

The university reserves the right to modify any requirements on an individual basis as deemed necessary by the dean of the College of Allied Health and Nursing. The college reserves the right, and the student (by his or her act of matriculation) concedes to the college the right, to require his or her withdrawal any time the college deems it necessary to safeguard its standards of scholarship, conduct, and compliance with regulations or for such other reasons as are deemed appropriate.

The dean and B.H.Sc. program director reserve the right to require the student's withdrawal at any time for the above-mentioned reasons.

# transfer credits

Students who have earned college credits at other regionally accredited colleges or universities can transfer these credits into the B.H.Sc. program. Students should contact a B.H.Sc. admissions counselor to discuss how prior college credits can be used to obtain the B.H.Sc. degree.


An evaluation of transfer credit will be completed prior to the first semester of enrollment, and applicable credit will be transferred based on all final official transcripts received. Students will be advised to take courses based on the official evaluation in their file.

Transfer students must provide final official transcripts from all their previous colleges. Their previous academic work will then be evaluated. The B.H.Sc. program will transfer a maximum of 90 eligible semester credits (grades of C or better), including credit for CLEP, proficiency exams, and prior experiential learning, toward a degree.

In order to be eligible to graduate with the B.H.Sc. degree, a student must have completed 45 semester hours of general education coursework in addition to the B.H.Sc. curriculum, with a resulting minimum total of 120 semester hours. If this requirement is not met at the time of admission to the program, it can be obtained concurrently while enrolled in the B.H.Sc. program. A student can obtain and transfer these courses through NSU's Farquhar College of Arts and Sciences or another regionally accredited college or university. General education courses must have a minimum grade of C (GPA of 2.0 on a 4.0 grading scale) to be accepted for transfer credit. A limited number of D grades may be considered, depending on the total number of credits being transferred and where the D grades are being applied to the curriculum.

Students must complete a minimum of 25 percent (30 semester hours) of their coursework within the B.H.Sc. program major.

Students with credits, health care or academic experiences, certificates, diplomas or degrees from nationally accredited colleges, military training, or other educational training/experiences should refer to the section that follows titled Assessment of Prior Experiences for Academic Credit in order to apply to convert these prior experiences into academic credit.



**Students are provisionally admitted to a degree-seeking program based on a review of unofficial transcripts or other specific program admission requirements. However, this admission includes a condition that final and official transcripts, documents, and requirements must be received within 90 calendar days from matriculation. If these final and official transcripts, documents, and/or requirements are not received by that time, the student will not be allowed to continue class attendance. Financial aid will not be disbursed to a provisional/conditional student until he or she has been fully admitted as a regular student (all admissions requirements have been approved by the college/program admissions office). Students who have an unpaid balance 30 days from the start of the term will be assessed a \$50 fee.**

# assessment of prior experiences for academic credit

Nova Southeastern University has established four different mechanisms for students to convert their prior experiences into academic credit. Students must initiate all requests for experiential learning credit before they complete 24 credits at NSU. Credits will be transcribed after 12 credits are successfully earned at NSU. For additional information, contact the B.H.Sc. program by calling (954) 262-1206 or 800-356-0026, ext. 1206, or via email at [cmitchel@nova.edu](mailto:cmitchel@nova.edu).

## 1. CLEP/DANTES/ACT-PEP/Computer Test-Out

Students can demonstrate their knowledge in a variety of areas by taking objective tests. The coordinator of experiential learning can provide further information about these tests, as can the testing office in academic services.

## 2. Nationally Accredited School Portfolios

Students who have attended nationally accredited institutions have the opportunity to write school portfolios. The coordinator of experiential learning works with each student in reviewing the student's nationally accredited institutional transcript to identify courses that may be applied toward his or her academic goal.

## 3. Full Portfolio-course challenge

The full portfolio is the process for challenging a college-level course for credit. Through this mechanism, a student presents his or her knowledge on a topic and has it evaluated by a faculty member. A maximum of 25 percent of a student's credits may be earned through the full portfolio process.

## 4. Standard Grant

Certain training courses, military experiences, or licenses may be converted into college credit. This can be done by supplying some very basic documentation. For military training programs, the recommendations contained in the "Guide to the Evaluation of Educational Experiences in the Armed Forces" from the American Council on Education will be utilized to evaluate such training for credit transfer. Examples include combat casualty and flight medicine courses of training.





# computer requirements

All students are required to have a computer with the following recommended minimum specifications:

- Pentium; 400MHz minimum processor
- 128 MB RAM
- Video capable of 800 x 600 screen display or better
- CD ROM capability
- Full duplex sound card and speakers
- 56.6 baud modem
- Internet connection with private Internet service provider (ISP) for access from home to the Internet
- Windows 95/98/2000/ME/XP or NT
- Microsoft Office 97 with PowerPoint, Word, and Excel minimum
- Surge suppresser electrical outlet
- Suggested option: Zip Drive
- Suggested option: DSL or cable Internet connection

## distance education support

Distance education students in the B.H.Sc. program are provided with NSU computer accounts including email. Students, however, must obtain their own Internet service providers (ISP) and use their own computer systems (IBM-compatible PC or Apple Macintosh, and a modem). New students receive an orientation and extensive online technical support dealing with online access, online tools and methods, and library resources.

Online interactive learning methods involve Web pages to access course materials, announcements, the electronic library, and other information, plus a range of online activities that facilitate frequent student-professor interaction. Faculty members and students interact via online forums using threaded bulletin boards, chatrooms, and email. Students are able to submit assignments as email attachments, through the use of online forms sent directly to program instructors, fax-to-fax, fax-to-email, and through WebCT. Some online courses may include electronic classroom sessions.



# online medical databases for all nsu students

- AARP Ageline
- AIDSLINE—AIDS Information Online
- Alt-HealthWatch
- American Speech-Language-Hearing Association Database
- Biological Sciences (Cambridge Scientific Abstracts)
- CancerLit (Ovid Web)
- Collaborative Review Groups and Protocols
- Combined Health Information Database (CHID)
- CINAHL (Nursing and Allied Health)
- Evidence-Based Medicine Reviews (EBMR)
- EBM Cochrane Database of Systematic Reviews (COCH)
- EMBASE Drugs & Pharmacology (Ovid Web)
- Harrison's Online (Textbook of Medicine—full text)
- Health and Psychosocial Instruments
- Health Reference Center
- HealthSTAR
- Information Quest
- International Pharmaceutical Abstracts
- *Journals@Ovid* (full text)
- Lexis-Nexis Academic Universe
- MD Consult (42 full-text medical textbooks)
- MEDLINE
- NetLibrary
- NewsBank ScienceSource Collection
- ScienceDirect
- Sport Discus (Ovid Web)
- UpToDate
- Visionet

## electronic library

Online students have online access to books, journal articles, microfiche, dissertations, index searches, catalog searches, and reference librarians. The online medical database collection at NSU is extensive and includes access to quality subscription services free of charge to the student.

As a Nova Southeastern University student, you will have access to a wealth of information through the electronic library, an extension of the on campus facilities. For more information on the available offerings, please visit the NSU Libraries' Web site at [www.nova.edu/library/nsulibs.htm](http://www.nova.edu/library/nsulibs.htm).

## tuition and fees

- \$50 nonrefundable application fee.
- Tuition is \$200 per credit hour.
- The NSU student activity fee is waived for individuals enrolled in the B.H.Sc. program.
- Students are responsible for purchasing any required textbooks and/or classroom materials.

Tuition waivers and discounts for NSU students, staff members, and faculty members will be in accordance with published policy and administered by the dean of the College of Allied Health and Nursing. Tuition, fees, and payment schedules are subject to change without notice.

## financial aid

The primary financial responsibility for a student's education rests with the student and his or her family, but economic circumstances for some families may make it necessary for the student to obtain assistance from other sources.

The purpose of the Student Financial Aid Program at Nova Southeastern University is to help as many qualified students as possible to complete their health professions education. Various loans, scholarships, and grants are available to qualified students to help ease the high cost of a health professions education. These financial assistance programs are described in a separate university publication, *The NSU Guide to Student Financial Assistance*.

For a copy or information, contact

NOVA SOUTHEASTERN UNIVERSITY  
Department of Student Financial Aid  
3301 College Avenue  
Fort Lauderdale, Florida 33314-7796  
(954) 262-3380 • 800-806-3680

## b.h.sc. program contact information

### ONLINE:

Web site: [www.nova.edu/bhs](http://www.nova.edu/bhs)

Online application download:

[www.nova.edu/bhs/application/103422NSUBacHlthSciAppDis.pdf](http://www.nova.edu/bhs/application/103422NSUBacHlthSciAppDis.pdf)

Online evaluation form download:

[www.nova.edu/bhs/application/103422BachHlthSciEval.pdf](http://www.nova.edu/bhs/application/103422BachHlthSciEval.pdf)

---

### PHONE:

B.H.Sc. admissions office: (954) 262-1101 or 800-356-0026, ext. 1101

B.H.Sc. program office: (954) 262-1260 or 800-356-0026, ext. 1260

---

### MAIL:

NOVA SOUTHEASTERN UNIVERSITY  
B.H.Sc. Program  
College of Allied Health and Nursing  
3200 South University Drive  
Fort Lauderdale, Florida 33328

# 1 terry administration building

## FIRST FLOOR

- Student Affairs
- Admissions
- Financial Aid
- HPD Cafeteria

## SECOND FLOOR

- College of Allied Health and Nursing
  - Audiology Department
  - Health Sciences Department
  - Occupational Therapy Department
  - Physical Therapy Department
  - Physician Assistant Department

## THIRD FLOOR

- College of Medical Sciences
- College of Pharmacy

## FOURTH FLOOR

- College of Osteopathic Medicine
- College of Optometry

## FIFTH FLOOR

- HPD Administration
- Public Health Program
- Nursing Department
- Area Health Education Center

## SECOND FLOOR

- Occupational Therapy Laboratories
- Optometry Laboratories
- Physical Therapy Laboratory
- Student Lounge
- FOMA Osteopathic Manipulative Medicine Laboratory

## THIRD FLOOR

- Basic Science Laboratories
- Gross Anatomy Laboratories
- Microscopy Laboratory
- Research Laboratories
- Moran Pharmacy Practice Laboratory
- Pharmacokinetics Laboratory
- Pharmaceutics Laboratory

# 4 pharmacy and pharmaceutical care center

# 5 sanford i. ziff health care center

## FIRST FLOOR

- Family Medicine
- Occupational Therapy
- Pediatrics
- Dermatology
- Physical Therapy
- Radiology

## SECOND FLOOR

- Optometry Clinics
- Optometry Dispensary

## THIRD FLOOR

- Business Offices
- Specialty Clinics
  - Cardiology
  - Internal Medicine
  - Osteopathic Manipulative Medicine
  - Pulmonary Medicine
- Emergency Medicine Training Center

# 2 assembly building

- Finkelstein Auditorium (125 seats)
- Jonas Auditorium (125 seats)
- Melnick Auditorium (125 seats)
- Resnick Auditorium (125 seats)
- Terry Auditorium (125 seats)
- Auditoria A, B, and C (125 seats each)
- Robert A. Steele Auditorium (500 seats)
- Hull Auditorium (250 seats)
- Seminar Rooms

# 3 library/laboratory building

## FIRST FLOOR

- Drug Information Center
- "Harvey" Cardiac Patient Simulation Room
- HPD Library
- Student Computer Laboratory
- Patient Simulation Center



# 6 dental medicine building

## FIRST FLOOR

- Oral Medicine and Radiology Clinic
- Oral Surgery Clinic
- Student Dental Clinic
- Clinic Support Laboratory
- Predoctoral and Postgraduate Oral Surgery

## SECOND FLOOR

- Faculty Practice
- Simulation Lab
- Postgraduate Endodontics
- Postgraduate Orthodontics
- Postgraduate Pediatric Dentistry
- Postgraduate Periodontics
- Postgraduate Prosthodontics

## THIRD FLOOR

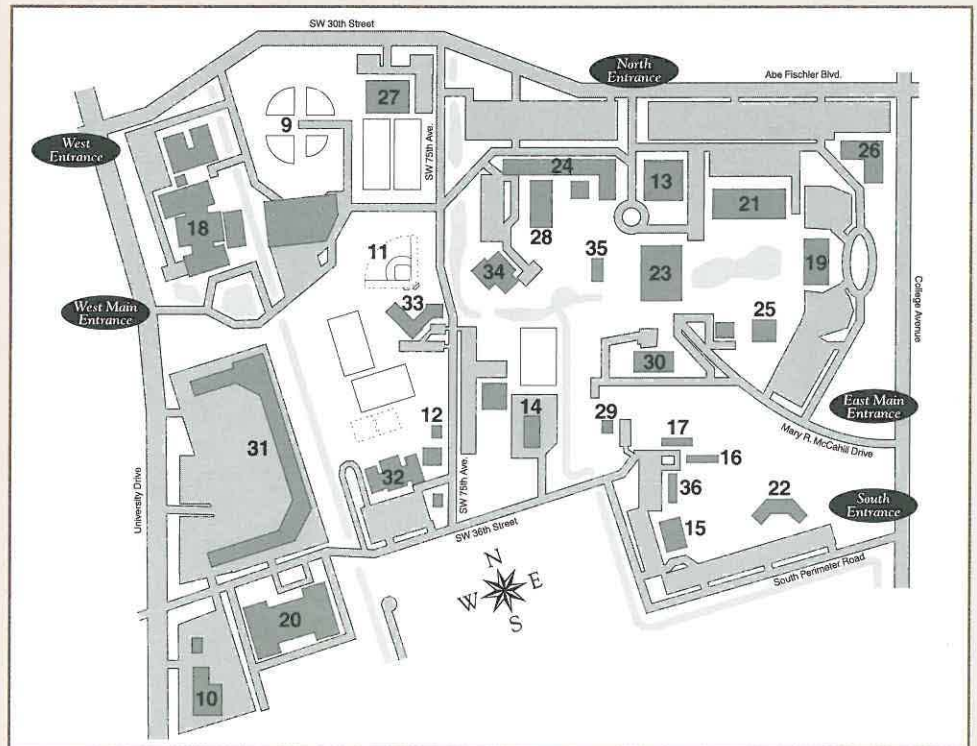
- Research Laboratories
- Seminar Rooms
- Central Sterilization Area
- Dispensing
- Faculty Offices
- Student Dental Supply Depot

# 7 parking garage

# 8 hpd assembly building

- Auditorium
- Computer Science Laboratory
- Seminar Rooms
- Physical Assessment Laboratory
- Compliance Office

A.D. Griffin Sports Complex with Lighted Softball Fields	9
Administrative Services Center	10
Athletics Field	11
Athletics House	12
Carl DeSantis Building	13
Central Services Building	14
Cultural Living Center	15
Farquhar Residence Hall	16
Founders Residence Hall	17
Health Professions Division Complex	18
Horvitz Administration Building	19
Jim & Jan Moran Family Center Village	20
Leo Goodwin Sr. Hall	21
Leo Goodwin Sr. Residence Hall	22
Library, Research, and Information Technology Center	23
Library and Main Student Parking Garage	24
Mailman-Hollywood Building	25
Maltz Psychology Building	26
Miami Dolphins Training Facility	27
Parker Building	28
Recreation Complex (Recplex)	29
Rosenthal Student Center	30
University Park Plaza	31
University School Lower School	32
University School Middle School	33
University School Upper (Sonken Building)	34
University School (Sonken Building East)	35
Vettel Residence Hall	36





NOVA SOUTHEASTERN UNIVERSITY  
Health Professions Division  
3200 South University Drive  
Fort Lauderdale, Florida 33328-2018

Office of Admissions  
(954) 262-1101 • 800-356-0026, ext. 1101  
[www.nova.edu/bhs](http://www.nova.edu/bhs)